



Piraeus, 29 July 2021



**HELLENIC REPUBLIC
HELLENIC STATISTICAL AUTHORITY**

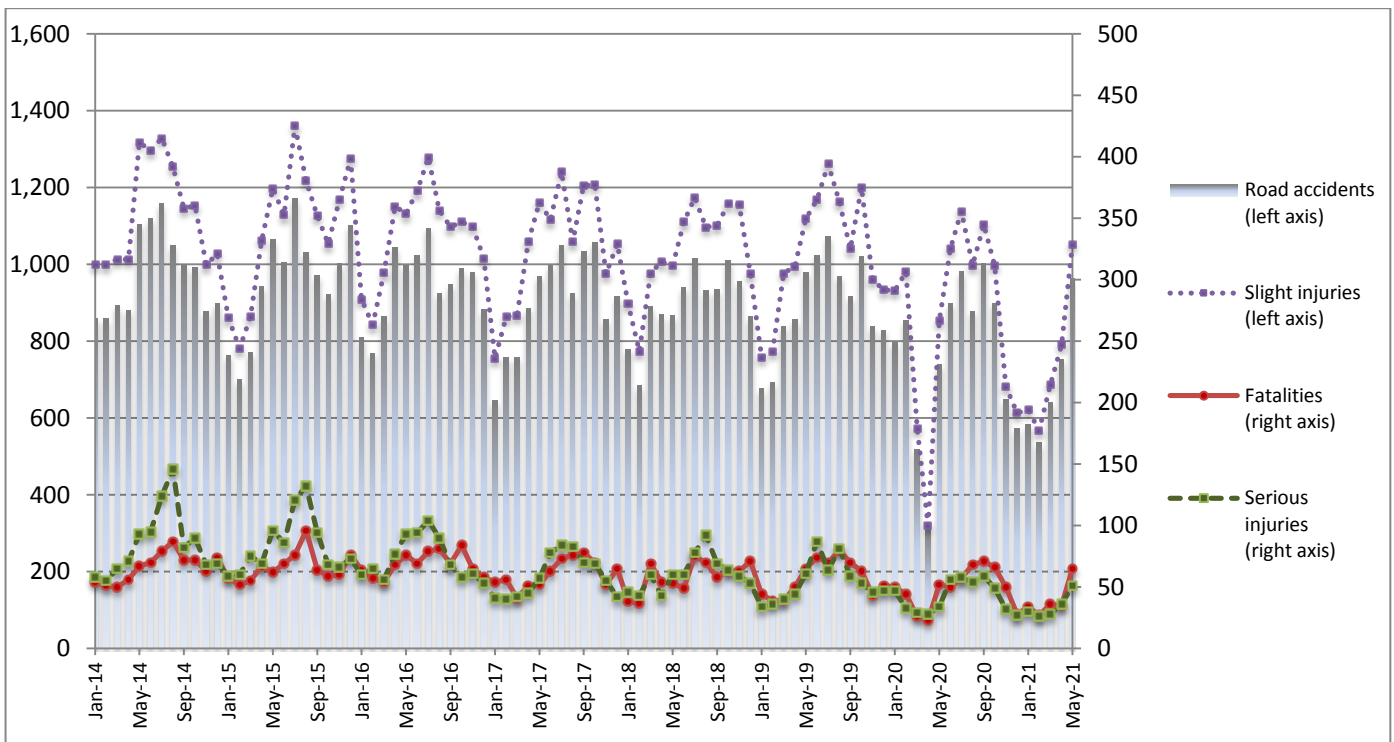
PRESS RELEASE

ROAD TRAFFIC ACCIDENTS: May 2021

The Hellenic Statistical Authority (ELSTAT) announces provisional¹ data from the survey on “Road Traffic Accidents” for May 2021. In particular, the road traffic accidents which occurred in Greece, resulting in death or injury, increased by 30.5% in comparison with the corresponding month of 2020 (963 road accidents in May 2021, against 738 road accidents in May 2020).

The casualties of the injury-causing accidents that occurred in May 2021 were as follows: 65 deaths, 51 serious injuries and 1,052 slight injuries. In contrast, in May 2020 the corresponding figures were: 52 deaths, 34 serious injuries and 853 slight injuries. Therefore, road traffic accident casualties in May 2021 increased by 25.0% for deaths, by 50.0% for serious injuries and by 23.3% for slight injuries.

**Graph 1: Road traffic accidents and casualties,
January 2014 - May 2021**



Provisional data for the period September 2020 – May 2021

Information on methodological issues:

Sectoral Statistics Division
Transport Statistics Section
P. Tzortzi, L. Miliara
Tel: +30 213 135 2187, +30 213 135 3095
e-mail: p.tzortzi@statistics.gr, l.miliara@statistics.gr

Information for data provision:

Tel: +30 213 135 2022, 2308, 2310
e-mail: data.dissem@statistics.gr

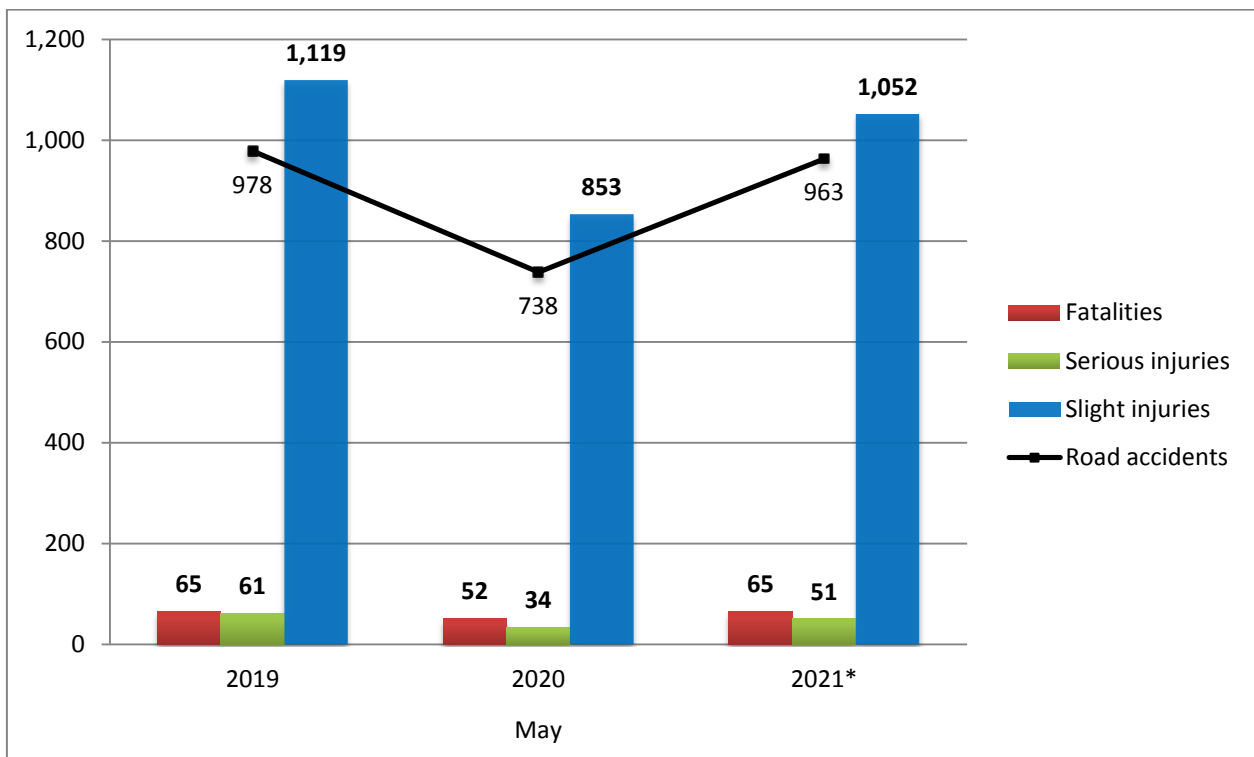
^[1] Data for the reference year is provisional until the finalization of the annual data, which takes place 10 months after the end of the reference year and is published in the corresponding press release of the following year. During these 10 months the provisional data is updated on the basis of the data of the Road Accident Forms of that year which is transmitted to ELSTAT by Police Authorities (see explanatory notes).

Table 1: Road traffic accidents and casualties, May 2019 - 2021*

	May				
	2019	2020	2020/2019 (%)	2021*	2021*/2020 (%)
Road accidents	978	738	-24.5	963	30.5
Fatalities	65	52	-20.0	65	25.0
Total injuries	1,180	887	-24.8	1,103	24.4
Serious injuries	61	34	-44.3	51	50.0
Slight injuries	1,119	853	-23.8	1,052	23.3

* Provisional data

Graph 2: Road traffic accidents and casualties, May 2019 - 2021*



* Provisional data

Table 2: Road traffic accidents and casualties, by region and department, May 2020 and 2021*

Region and department	Road accidents			Fatalities			Serious injuries			Slight injuries		
	2020	2021*	%	2020	2021*	%	2020	2021*	%	2020	2021*	%
Greece Total	738	963	30.5	52	65	25.0	34	51	50.0	853	1,052	23.3
Anatoliki Makedonia and Thraki (East Macedonia and Thrace)	29	29	0.0	4	3	-25.0	1	3	200.0	32	30	-6.3
Drama	4	8	100.0	0	2		0	0		4	9	
Evros	6	5	-16.7	1	0		0	0		6	7	
Kavala	7	10	42.9	1	0		0	1		6	11	
Xanthi	3	2	-33.3	1	0		1	1		4	1	
Rodopi	9	4	-55.6	1	1		0	1		12	2	
Kentriki Makedonia (Central Macedonia)	99	178	79.8	6	8	33.3	3	3	0.0	114	216	89.5
Imathia	1	4	300.0	0	2		0	0		1	4	
Thessaloniki	80	154	92.5	2	4		0	2		99	191	
Kilkis	3	4	33.3	1	0		0	0		3	5	
Pella	8	3	-62.5	1	0		3	1		4	2	
Pieria	1	2	100.0	0	0		0	0		1	3	
Serres	2	1	-50.0	2	1		0	0		0	0	
Chalkidiki	4	10	150.0	0	1		0	0		6	11	
Dytiki Makedonia (West Macedonia)	4	6	50.0	0	0	-	0	1	-	4	6	50.0
Grevena	0	0	-	0	0		0	0		0	0	
Kastoria	1	1	0.0	0	0		0	1		1	0	
Kozani	3	4	33.3	0	0		0	0		3	5	
Florina	0	1	-	0	0		0	0		0	1	
Ipeiros (Epirus)	4	11	175.0	0	0	-	1	0	-100.0	3	13	333.3
Arta	0	0	-	0	0		0	0		0	0	
Thesprotia	2	2	0.0	0	0		1	0		1	2	
Ioannina	2	7	250.0	0	0		0	0		2	9	
Preveza	0	2	-	0	0		0	0		0	2	
Thessalia (Thessaly)	19	28	47.4	4	7	75.0	0	3	-	19	21	10.5
Karditsa	3	4	33.3	0	1		0	0		3	3	
Larissa	8	11	37.5	3	2		0	3		8	7	
Magnissia	5	6	20.0	1	1		0	0		5	6	
Trikala	3	7	133.3	0	3		0	0		3	5	
Ionian Nisia (Ionian Islands)	12	9	-25.0	1	1	0.0	1	1	0.0	13	8	-38.5
Zakynthos	4	1	-75.0	0	0		0	1		6	0	
Kerkyra	4	6	50.0	0	1		0	0		4	6	
Kefallinia	1	0	-100.0	1	0		0	0		0	0	
Lefkada	3	2	-33.3	0	0		1	0		3	2	

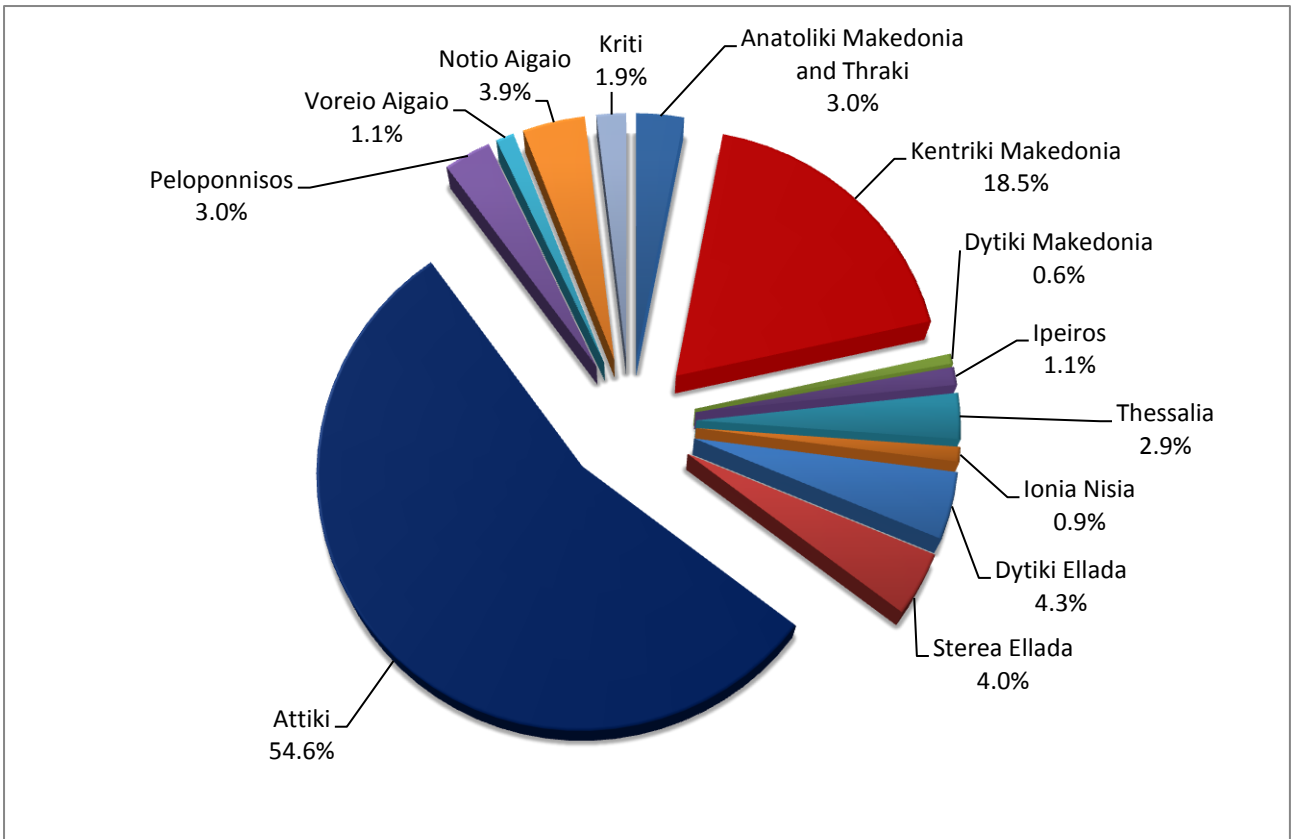
* Provisional data

Table 2: Road traffic accidents and casualties, by region and department, May 2020 and 2021* (Continued)

Region and department	Road accidents			Fatalities			Serious injuries			Slight injuries		
	2020	2021*	%	2020	2021*	%	2020	2021*	%	2020	2021*	%
Dytiki Ellada (West Greece)	36	41	13.9	4	3	-25.0	2	1	-50.0	52	45	-13.5
Etolia & Akarnania	12	15	25.0	0	1		0	1		24	15	
Achaia	21	18	-14.3	3	1		2	0		25	21	
Ilia	3	8	166.7	1	1		0	0		3	9	
Sterea Ellada	31	39	25.8	5	5	0.0	2	2	0.0	37	40	8.1
Viotia	2	6	200.0	0	1		0	0		4	7	
Evia	17	23	35.3	2	2		1	2		18	22	
Evrytania	1	2	100.0	0	0		0	0		1	2	
Fthiotida	11	5	-54.5	3	2		1	0		14	6	
Fokida	0	3	-	0	0		0	0		0	3	
Attiki (Attica)	439	526	19.8	15	16	6.7	13	24	84.6	509	592	16.3
Peloponnisos (Peloponnese)	26	29	11.5	3	9	200.0	4	2	-50.0	28	30	7.1
Argolida	9	6	-33.3	1	0		2	0		12	7	
Arkadia	3	4	33.3	0	0		1	0		3	4	
Korinthia	10	13	30.0	1	5		1	1		8	13	
Lakonia	1	2	100.0	0	2		0	0		1	3	
Messinia	3	4	33.3	1	2		0	1		4	3	
Voreio Aigaio (North Aegean)	9	11	22.2	2	1	-50.0	1	1	0.0	8	10	25.0
Lesvos	5	8	60.0	2	1		0	1		4	7	
Samos	2	3	50.0	0	0		1	0		2	3	
Chios	2	0	-100.0	0	0		0	0		2	0	
Notio Aigaio (South Aegean)	18	38	111.1	3	5	66.7	3	6	100.0	21	32	52.4
Dodekanissos	12	15	25.0	3	3		0	3		18	13	
Kyklades	6	23	283.3	0	2		3	3		3	19	
Kriti (Crete)	12	18	50.0	5	7	40.0	3	4	33.3	13	9	-30.8
Iraklio	7	8	14.3	2	0		2	2		9	7	
Lassithi	1	5	400.0	0	5		1	0		1	1	
Rethymno	2	1	-50.0	1	1		0	0		1	0	
Chania	2	4	100.0	2	1		0	2		2	1	

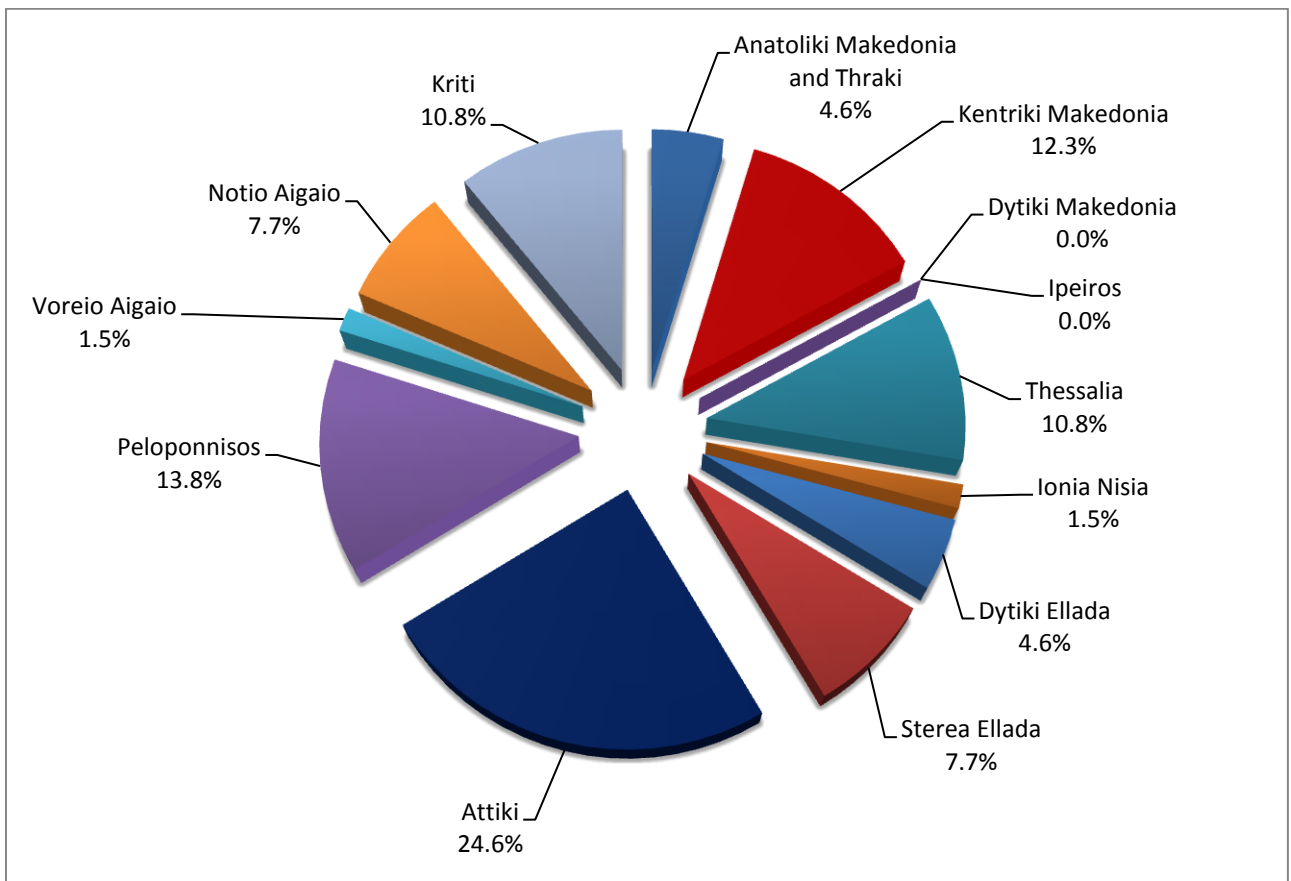
* Provisional data

Graph 3: Road traffic accidents by region, May 2021 *



* Provisional data

Graph 4: Fatalities by region, May 2021 *



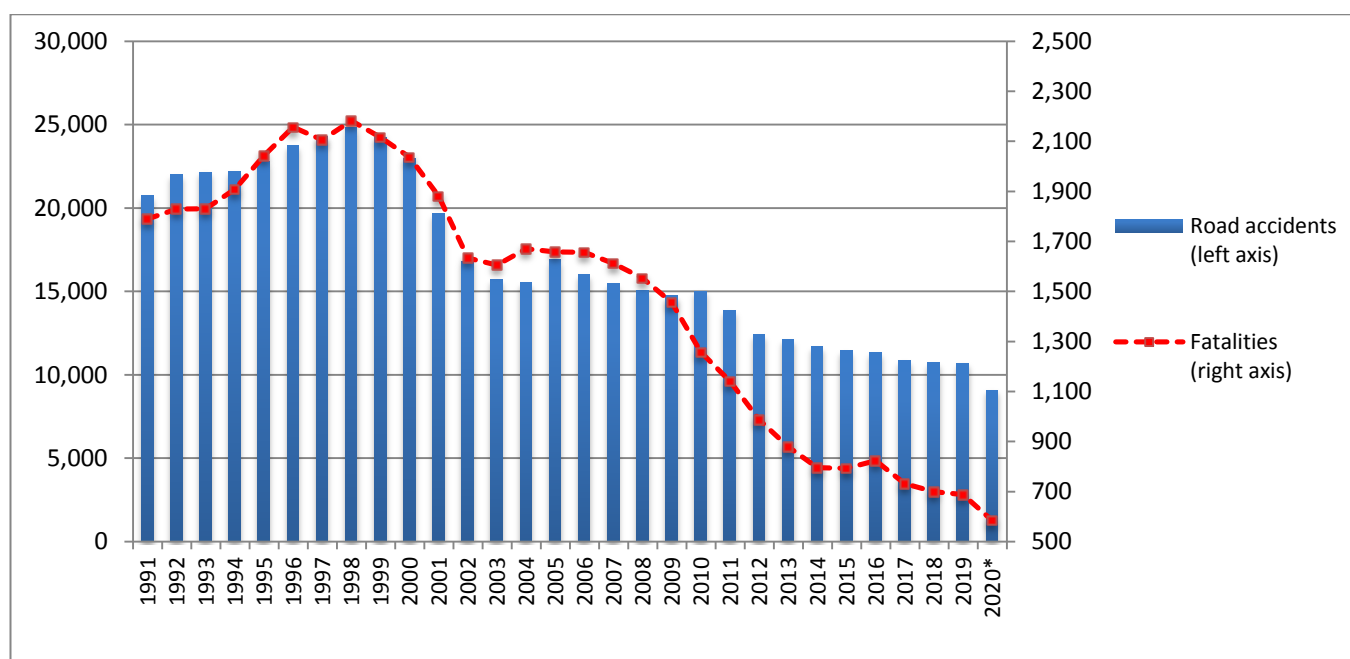
* Provisional data

Table 3: Road traffic accidents and casualties for the period January - May 2019, 2020 and 2021*

	2019		2020		2021 *
	January - May	Total year	January - May	Total year*	January - May
Road Accidents	4,042	10,712	3,218	9,098	3,475
<i>Annual Change (%)</i>			-20.4	-15.1	8.0
Fatalities	237	688	195	585	197
<i>Annual Change (%)</i>			-17.7	-15.0	1.0
Serious injuries	215	652	171	506	171
<i>Annual Change (%)</i>			-20.5	-22.4	0.0
Slight injuries	4,623	12,350	3,659	10,235	3,718
<i>Annual Change (%)</i>			-20.9	-17.1	1.6

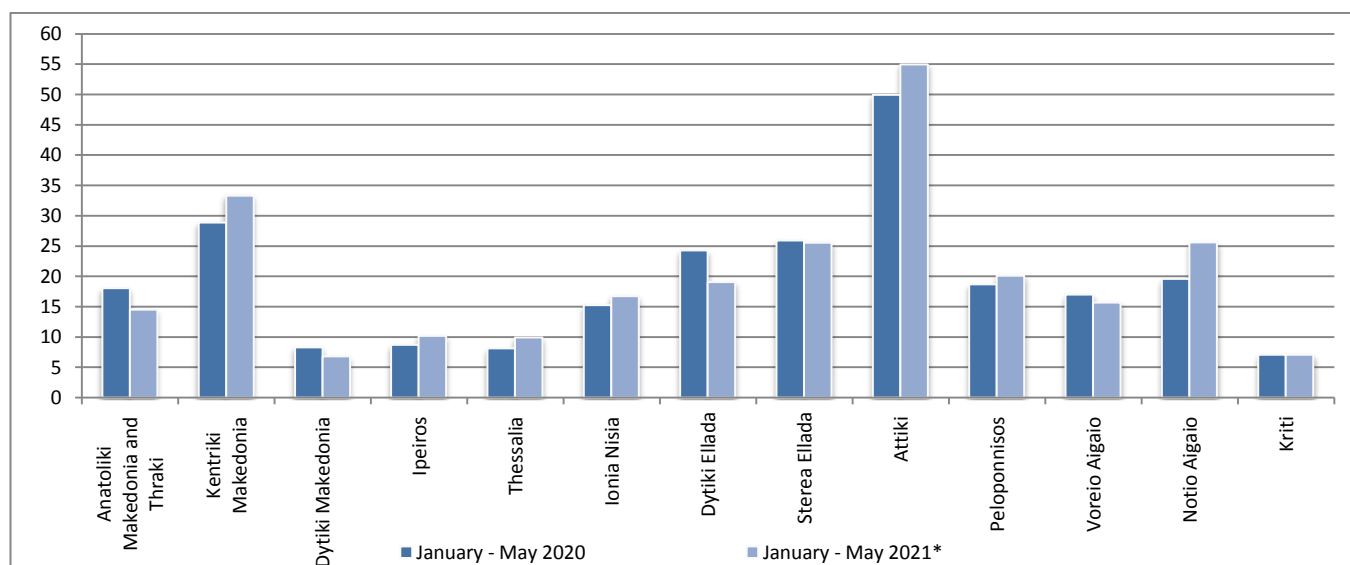
* Provisional data

Graph 5: Total road traffic accidents and fatalities, 1991-2020*



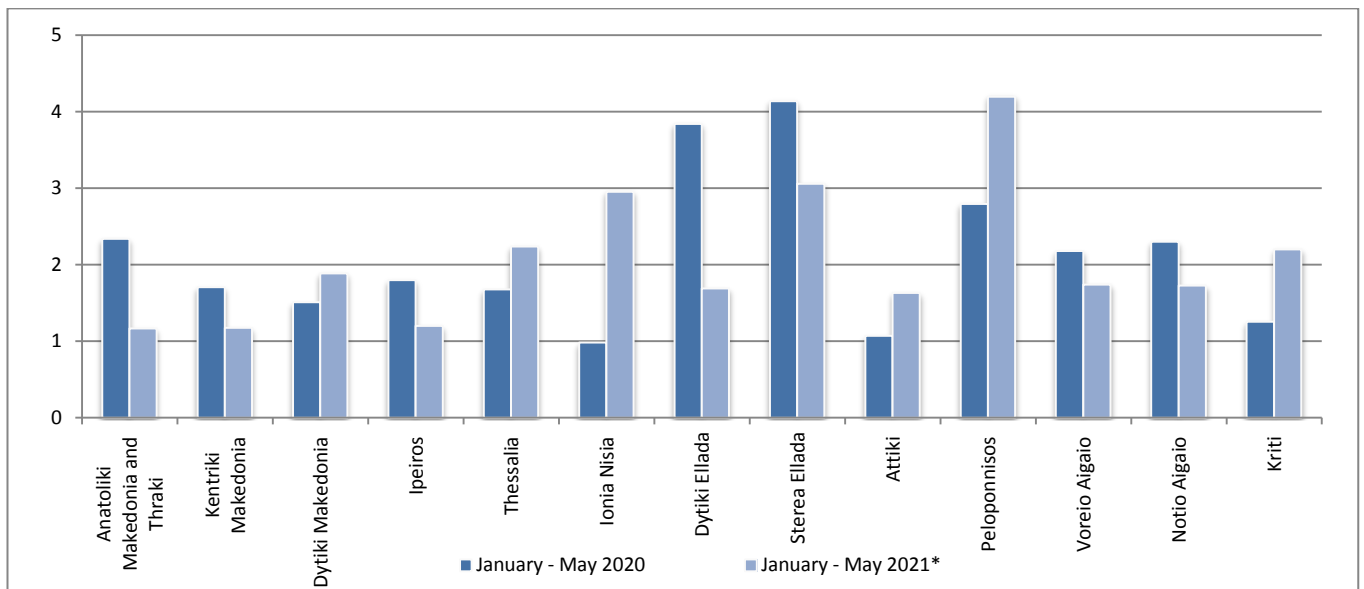
* Provisional data for the period September 2020 – December 2020

Graph 6: Road traffic accidents per 100,000 inhabitants for the period January - May 2020 and 2021*

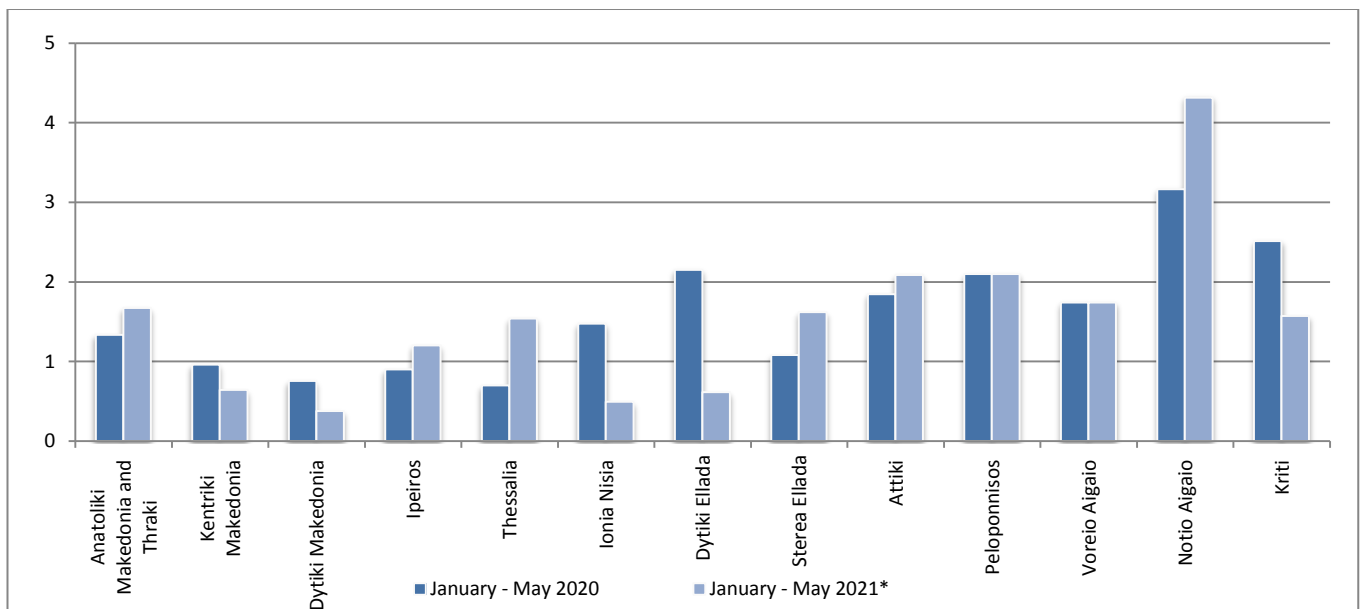


* Provisional data

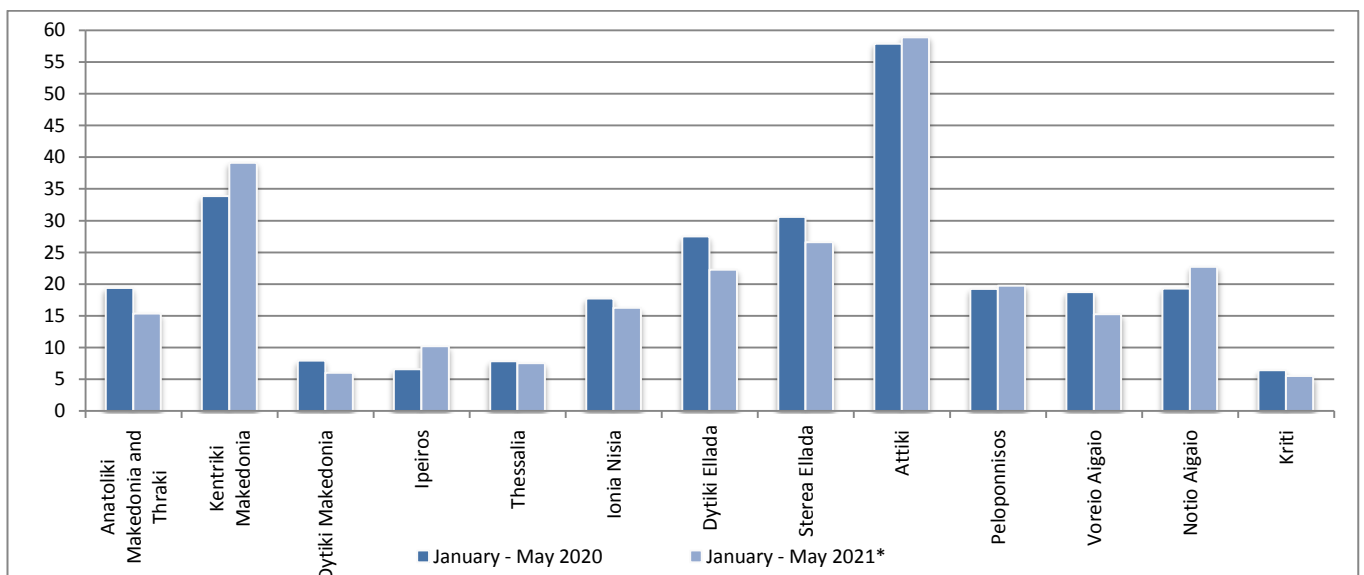
Graph 7: Fatalities per 100,000 inhabitants for the period January - May 2020 and 2021*



Graph 8: Serious injuries per 100,000 inhabitants for the period January - May 2020 and 2021*



Graph 9: Slight injuries per 100,000 inhabitants for the period January - May 2020 and 2021*



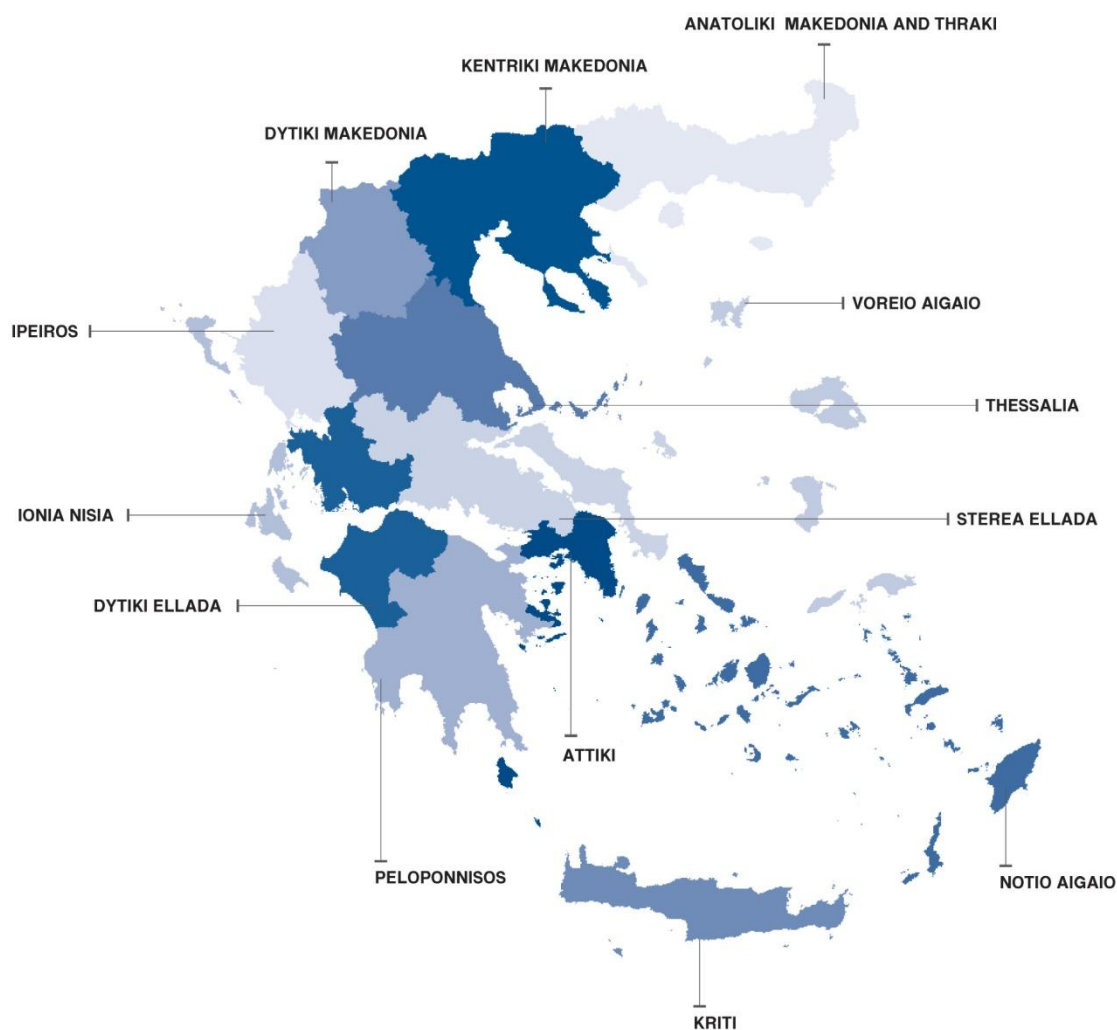
* Provisional data

EXPLANATORY NOTES

Survey on Road Traffic Accidents The Survey on Road Traffic Accidents is conducted on a monthly basis and it records, for each region (see map) and department of Greece and for each month separately, the number of accidents resulting in death or injury, as well as the number of persons injured by categories (drivers, passengers, pedestrians).

On a yearly basis, road traffic accidents are further analyzed. The competent agencies for filling in/collecting the forms on road accidents are the local Police Authorities and the local Port Authorities of Greece.

The lower level of analysis for the place where an injury road accident occurred is the settlement. Data are collected on a monthly basis. The main variables are the following: place of accident, kind of road, casualties, conditions of road surface and type of road.



Legal basis The Survey on Road Traffic Accidents is governed by Council Decision 93/704 of the European Community.

Reference period Monthly.

Availability of data Provisional data are available 2 months after the reference month.
Final data are available 10 months after the reference year.

Definitions **Road accident** (injury accident): Any accident involving at least one road motor vehicle in motion on a public road or square to which the public has access (excluding yards, industrial sites or vehicle depot of public transport enterprises), resulting in at least one injured or killed person. Accidents with only material damages are not included.

Fatality (Death): Any person killed immediately or dying within 30 days as a result of an injury accident (This national definition applies since 01.01.1996)

Person injured: Any person who sustained an injury as result of an injury accident, and who normally needs medical treatment.

Serious injury: Any person who sustained an injury as result of an injury accident, such as brain damages, mutilation, multiple injuries, which may result in lack of awareness or which are life-threatening.

Slight injury: Any person injured who sustained minor and not life-threatening injuries.

Vehicle: Include motor vehicles, trolleybuses, motorcycles, bicycles, motorbikes, agricultural and road making machines, animal and hand-drawn vehicles. Railway vehicles are excluded, unless the road accident involves at least one of the aforementioned types of vehicles and therefore, railway vehicles are considered vehicles.

Methodology The forms of the survey are filled in by the local Police Authorities and the local Port Authorities as well.

References More information about Road Traffic Accidents is available on ELSTAT's website and more specifically at the link: <https://www.statistics.gr/en/statistics/-/publication/SDT03/>.