

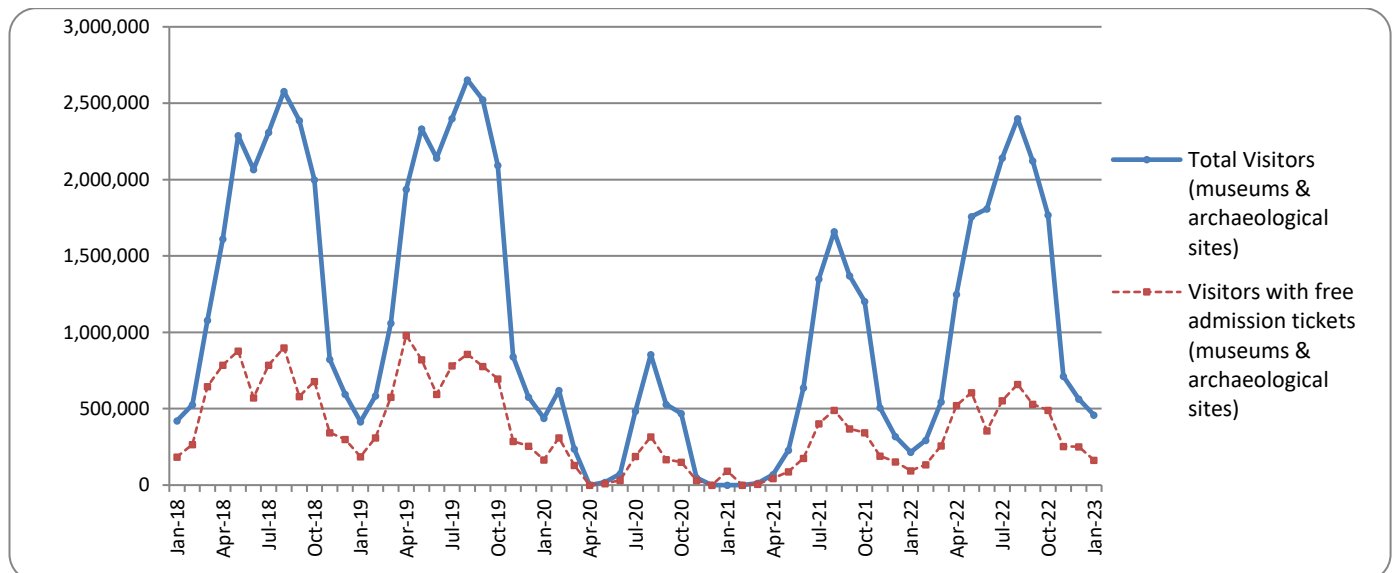


SURVEY ON MUSEUMS AND ARCHAEOLOGICAL SITES ATTENDANCE JANUARY 2023

The Hellenic Statistical Authority (ELSTAT) announces the results of the *Survey on Museums and Archaeological Sites Attendance* for January 2023. More specifically:

- During January 2023 compared with the corresponding month of 2022, museums recorded a 131.2% increase in the number of visitors and a 138.2% increase in the number of free admission visitors, as well as a 180.1% increase in their receipts (Table 1).
- As regards archaeological sites, in January 2023 compared with the corresponding month of 2022, an increase of 97.4% was recorded in the number of visitors, of 28.3% in the number of free admission visitors and of 186.4% in the corresponding receipts (Table 1).

Graph 1: Visitors of Museums and Archaeological sites (January 2018 – January 2023)



Information on methodological issues:

Sectoral Statistics Division
Tourism and Culture Statistics Section
Head of Section: Eleni Papadopoulou
Tel: +30 213 135 2168
e-mail: e.papadopoulou@statistics.gr

Information for data provision:

Tel. +30 213 135 2022, 2308, 2310
e-mail: data.dissem@statistics.gr

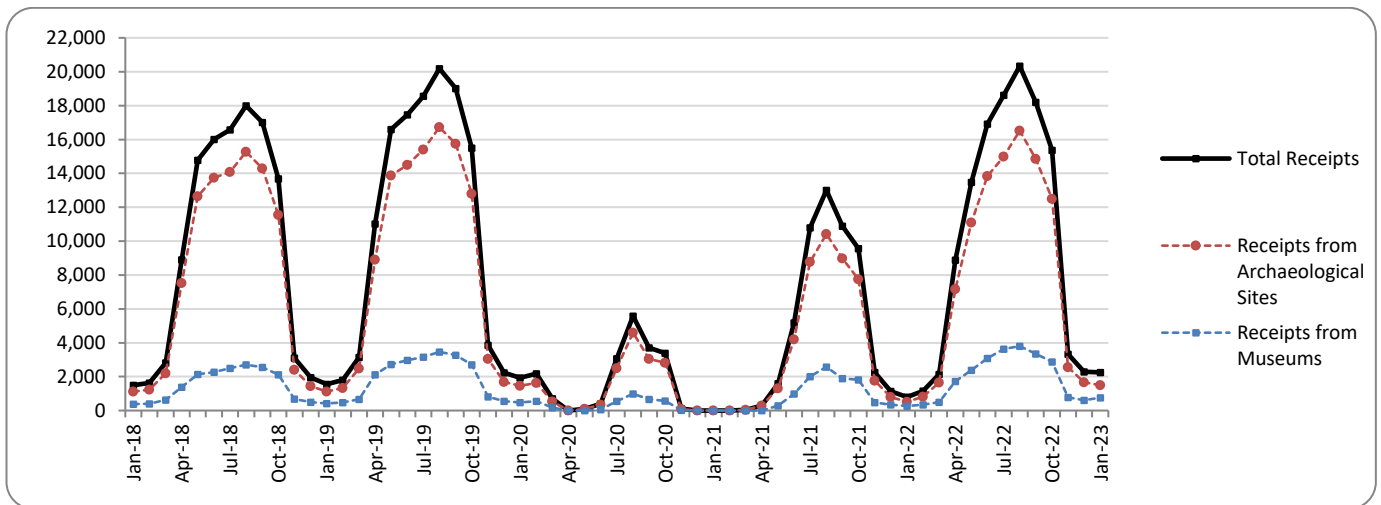
**TABLE 1: VISITORS OF MUSEUMS AND ARCHAEOLOGICAL SITES - TOTAL RECEIPTS
(JANUARY 2022 & JANUARY 2023)**

I. NUMBER OF VISITORS			
Museums and Archaeological sites	2022	2023	Change 2023/2022
Total number of visitors (A+B)	216,828	458,543	111.5%
A. Museums (C+E)	90,288	208,707	131.2%
Acropolis Museum	23,326	65,832	182.2%
National Archaeological	7,918	22,201	180.4%
Ancient Olympia	921	794	-13.8%
Palace of the Grand Master (Rhodes)	758	2,078	174.1%
Herakleion Archaeological (Crete)	1,479	4,781	223.3%
White Tower	4,072	14,988	268.1%
Delphi	3,847	6,826	77.4%
Other museums	47,967	91,207	90.1%
B. Archaeological Sites (D+F)	126,540	249,836	97.4%
Epidavros ⁽¹⁾	4,197	8,276	97.2%
The Acropolis of Mycenae & Atreus' Treasure	5,192	9,590	84.7%
The Acropolis of Athens	44,222	105,106	137.7%
Sounio	10,879	14,632	34.5%
The Acropolis of Lindos	266	556	109.0%
Royal Tombs of Vergina	3,574	6,634	85.6%
Ancient Olympia	1,941	5,602	188.6%
Knossos (Crete)	1,920	5,157	168.6%
Phaistos (Crete)	217	629	189.9%
Ancient Korinthos ⁽¹⁾	1,884	4,591	143.7%
Mystras ⁽¹⁾	2,434	2,928	20.3%
Delphi	8,054	13,192	63.8%
Other archaeological sites	41,760	72,943	74.7%
II. VISITORS WHO PAID TICKET			
	2022	2023	Change 2023/2022
Total number of visitors who paid ticket (C+D)	122,562	294,619	140.4%
C. Museums	51,166	115,537	125.8%
D. Archaeological sites	71,396	179,082	150.8%
III. VISITORS WITH FREE ADMISSION TICKETS			
	2022	2023	Change 2023/2022
Total number of visitors with free admission ticket (E+F)	94,266	163,924	73.9%
E. Museums	39,122	93,170	138.2%
F. Archaeological sites	55,144	70,754	28.3%
IV. RECEIPTS (euros)			
	2022	2023	Change 2023/2022
Total Receipts (G+H)	794,240	2,257,189	184.2%
G. Museums	272,876	764,253	180.1%
H. Archaeological sites	521,364	1,492,936	186.4%

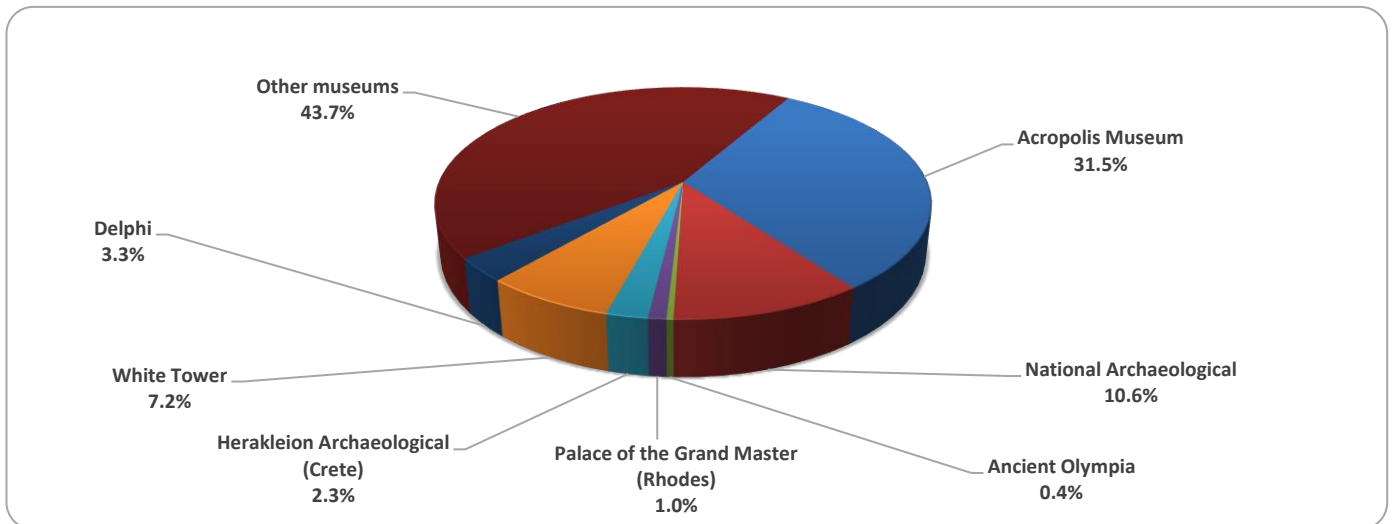
⁽¹⁾ Flat rate ticket, valid both for the museum and the archaeological site.

The following graphs depict the evolution of the receipts of Museums and Archaeological Sites (Graph 2), as well as the number of visitors by Museum (Graph 3) and by Archaeological Site (Graph 4).

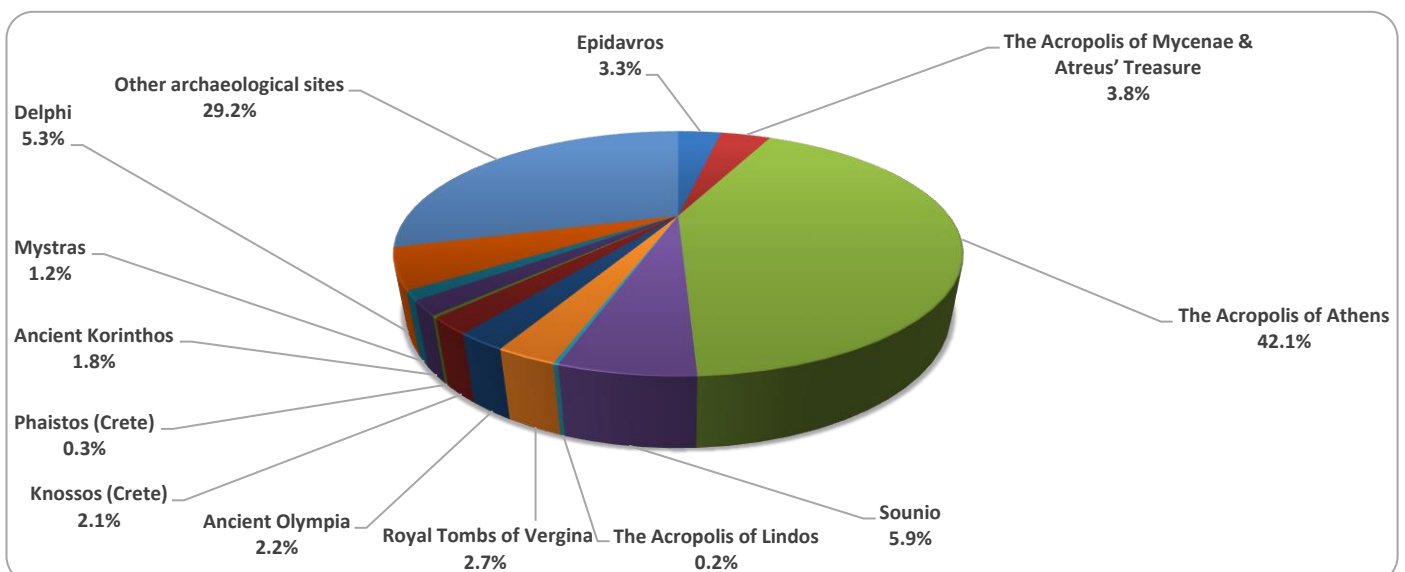
Graph 2: Receipts from Museums and Archaeological Sites (January 2018 – January 2023)
(in thousand euro)



Graph 3: Percentage distribution of visitors by Museum, January 2023



Graph 4: Percentage distribution of visitors by Archaeological site, January 2023



**TABLE 2: VISITORS OF MUSEUMS AND ARCHAEOLOGICAL SITES - TOTAL RECEIPTS
(2021, 2022, JANUARY 2022, 2023)**

I. VISITORS					
Museums and Archaeological sites	2021 ⁽²⁾	2022	JANUARY		change
			2022	2023	2023/2022
Total number of visitors (A+B)	7,357,026	15,583,552	216,828	458,543	111.5%
A. Museums (C+E)	2,047,481	4,636,901	90,288	208,707	131.2%
Acropolis Museum	547,908	1,397,353	23,326	65,832	182.2%
National Archaeological	189,208	474,821	7,918	22,201	180.4%
Ancient Olympia	34,367	85,179	921	794	-13.8%
Palace of the Grand Master (Rhodes)	142,530	263,521	758	2,078	174.1%
Herakleion Archaeological (Crete)	127,574	249,715	1,479	4,781	223.3%
White Tower	77,983	193,916	4,072	14,988	268.1%
Delphi	58,102	151,512	3,847	6,826	77.4%
Other museums	869,809	1,820,884	47,967	91,207	90.1%
B. Archaeological Sites (D+F)	5,309,545	10,946,651	126,540	249,836	97.4%
Epidavros ⁽¹⁾	182,118	393,077	4,197	8,276	97.2%
The Acropolis of Mycenae & Atreus' Treasure	156,227	372,448	5,192	9,590	84.7%
The Acropolis of Athens	1,219,717	3,019,841	44,222	105,106	137.7%
Sounio	171,348	314,506	10,879	14,632	34.5%
The Acropolis of Lindos	349,418	596,331	266	556	109.0%
Royal Tombs of Vergina	56,790	168,444	3,574	6,634	85.6%
Ancient Olympia	143,549	338,365	1,941	5,602	188.6%
Knossos (Crete)	445,160	831,320	1,920	5,157	168.6%
Phaistos (Crete)	48,599	74,817	217	629	189.9%
Ancient Korinthos ⁽¹⁾	59,271	153,616	1,884	4,591	143.7%
Mystras ⁽¹⁾	78,762	139,512	2,434	2,928	20.3%
Delphi	146,061	332,870	8,054	13,192	63.8%
Other archaeological sites	2,252,525	4,211,504	41,760	72,943	74.7%
II. VISITORS WHO PAID TICKET					
	2021 ⁽²⁾	2022	JANUARY		change
			2022	2023	2023/2022
Total number of visitors who paid ticket (C+D)	5,090,418	10,877,516	122,562	294,619	140.4%
C. Museums	1,289,896	2,883,216	51,166	115,537	125.8%
D. Archaeological sites	3,800,522	7,994,300	71,396	179,082	150.8%
III. VISITORS WITH FREE ADMISSION TICKETS					
	2021 ⁽²⁾	2022	JANUARY		change
			2022	2023	2023/2022
Total number of visitors with free admission ticket (E+F)	2,266,608	4,706,036	94,266	163,924	73.9%
E. Museums	757,585	1,753,685	39,122	93,170	138.2%
F. Archaeological sites	1,509,023	2,952,351	55,144	70,754	28.3%
IV. RECEIPTS (euros)					
	2021 ⁽²⁾	2022	JANUARY - DECEMBER		change
			2022	2023	2023/2022
Total Receipts (G+H)	54,735,194	121,535,113	794,240	2,257,189	184.2%
G. Museums	10,385,644	23,361,465	272,876	764,253	180.1%
H. Archaeological sites	44,349,550	98,173,648	521,364	1,492,936	186.4%

⁽¹⁾ Flat rate ticket, valid both for the museum and the archaeological site.

⁽²⁾ The operation of museums was suspended gradually from November 1st 2020 until May 13th 2021. The operation of archaeological sites was suspended from November 7th 2020 until March 21st 2021, in the framework of the preventative measures against the Covid-19 pandemic.

EXPLANATORY NOTES

Survey on Museums and Archaeological Sites Attendance	<p>The Survey on Museums and Archaeological Sites Attendance has been producing results since 1970. The survey collects data from the Hellenic Organization of Cultural Resources Development (HOCRED), supervised by the Ministry of Culture and Sports, on the number of visitors and the receipts from the tickets sold in the Museums and Archaeological sites of the country. The corresponding data for the Acropolis Museum is available from December 2009 onwards.</p>
Legal Framework	<p>The survey is conducted since 1970 on a regular basis and it produces results on a monthly and yearly basis, in compliance with the Joint Ministerial Decision 15189/B379/73.</p>
Reference Period	<p>1/1/2023 - 31/1/2023</p>
Methodology and Definitions	<p>The survey is conducted on a monthly basis from data mainly collected from the Hellenic Organization of Cultural Resources Development (HOCRED), supervised by the Ministry of Culture and Sports, on the number of visitors and the receipts from the tickets sold in the Museums and Archaeological sites of the Country. ELSTAT tabulates and presents the data for the whole of the Country, by month and by year.</p> <p>Number of flat rate tickets:</p> <p>From April 1999 onwards, in some museums and the nearby archaeological sites, in addition to the ordinary ticket, a new “flat rate ticket” was established, which is valid for both the museum and the nearby archaeological site. The total number of these flat rate tickets for January 2023 was 10,292</p>
References	<p>More information on the Survey on Museums and Archaeological Sites Attendance and detailed time series are available on: http://www.statistics.gr/en/statistics/-/publication/SCI21/</p>