



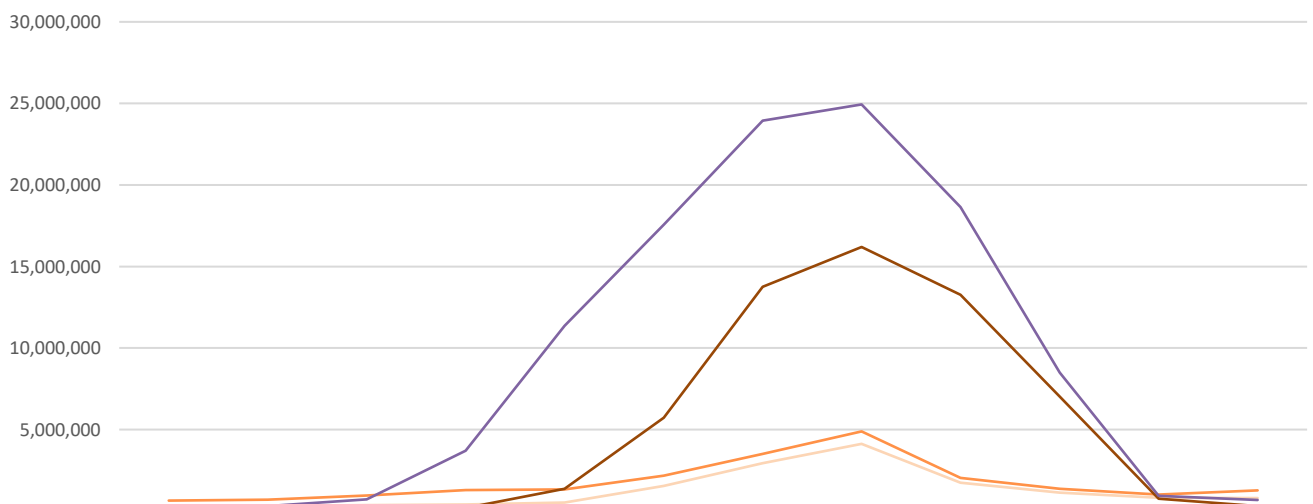
ARRIVALS AND NIGHTS SPENT IN HOTELS, SIMILAR ESTABLISHMENTS, TOURIST CAMPSITES AND SHORT-STAY ACCOMMODATION ESTABLISHMENTS Year 2022 (final data)

According to the results of the survey on arrivals and nights spent in hotels, similar establishments and tourist campsites and of short-stay accommodation establishments, conducted by the Hellenic Statistical Authority (ELSTAT), for the total of these establishments, in 2022 compared with 2021, an increase is recorded both in arrivals, by 74.4%, (Tables 1 and 3) and in nights spent, by 79.7% (Tables 2 and 4).

More specifically, in 2022 compared with 2021, an increase of 86.9% and 89.3% is recorded in arrivals and nights spent by non-residents, respectively, while arrivals and nights spent by residents recorded an increase of 47.0% and 41.7%, respectively (Graph 1).

The annual occupancy rate of the bed places in hotels and similar establishments (excluding tourist campsites and short stay accommodation establishments) amounted to 51.1% in 2022, compared with 42.9% in 2021 (Graphs 17 and 18). The capacity by category of hotel accommodation establishment is presented in Table 5.

Graph 1. Evolution of nights spent of residents and non-residents in hotels, similar establishments, tourist campsites and short stay accommodation establishments, by month 2021-2022



	JAN	FEB	MAR	APR	MAY	JUN	JUL	AUG	SEP	OCT	NOV	DEC
Residents 2021	274,106	302,284	371,705	405,498	515,966	1,552,106	2,941,999	4,122,481	1,732,822	1,127,089	820,569	796,583
Residents 2022	644,298	698,014	965,194	1,292,651	1,327,742	2,180,133	3,499,579	4,887,336	2,038,818	1,373,868	1,022,389	1,265,792
Non-residents 2021	106,077	106,176	137,834	185,668	1,367,790	5,721,819	13,763,835	16,195,515	13,262,619	7,019,966	754,062	302,244
Non-residents 2022	246,382	314,423	719,645	3,709,662	11,366,466	17,559,837	23,945,606	24,936,762	18,649,875	8,485,018	944,892	671,522

Information on methodological issues:

Sectoral Statistics Division
Tourism and Cultural Statistics Section
Head of the Section: Eleni Papadopoulou
Tel: +30 213 135 2168
e-mail: e.papadopoulou@statistics.gr

Information for data provision:

Tel. +30 213 135 2022, 2308, 2310
e-mail: data.dissem@statistics.gr

During 2022, the largest share of arrivals and overnight stays is observed in hotel accommodation establishments (79.2% and 76.8%, respectively) (Graph 3).

According to the monthly distribution of the data, 59.1% of the arrivals and 66.0% of the nights spent, in hotels, similar establishments, tourist campsites and short-stay accommodation establishments of Greece, are recorded during the period from July to October (Tables 1 and 2, Graph 5,6 and 7).

As regards the breakdown of the survey data by NUTS 2 Region, a significant increase of arrivals is observed in arrivals and nights spent, in absolute values, in Notio Aigaio (72.4% in arrivals and 81.7% in nights spent), Kriti (74.1% in arrivals and 78.2% in nights spent), Attiki (89.8% in arrivals and 90.0% in nights spent) and Kentriki Makedonia (78.8% in arrivals and 83.0% in nights spent) (Tables 3 and 4, Graphs 8,9 and 10).

In 2022, the largest share of arrivals and nights spent in hotels, similar establishments, short-stay accommodation establishments and tourist campsites, is recorded by non-residents, i.e. 73.5% of arrivals and 84.0% of nights spent (Graph 4).

In 2022, the largest share of arrivals and nights spent by non-residents in hotels, similar establishments, short-stay accommodation establishments and tourist campsites is recorded by customers (guests) whose country of residence is in Europe (83.9% of arrivals and 91.0% of nights spent) with a significant contribution from the EU Members States (58.7% of arrivals and 62.9% of nights spent) (Tables 6 and 7).

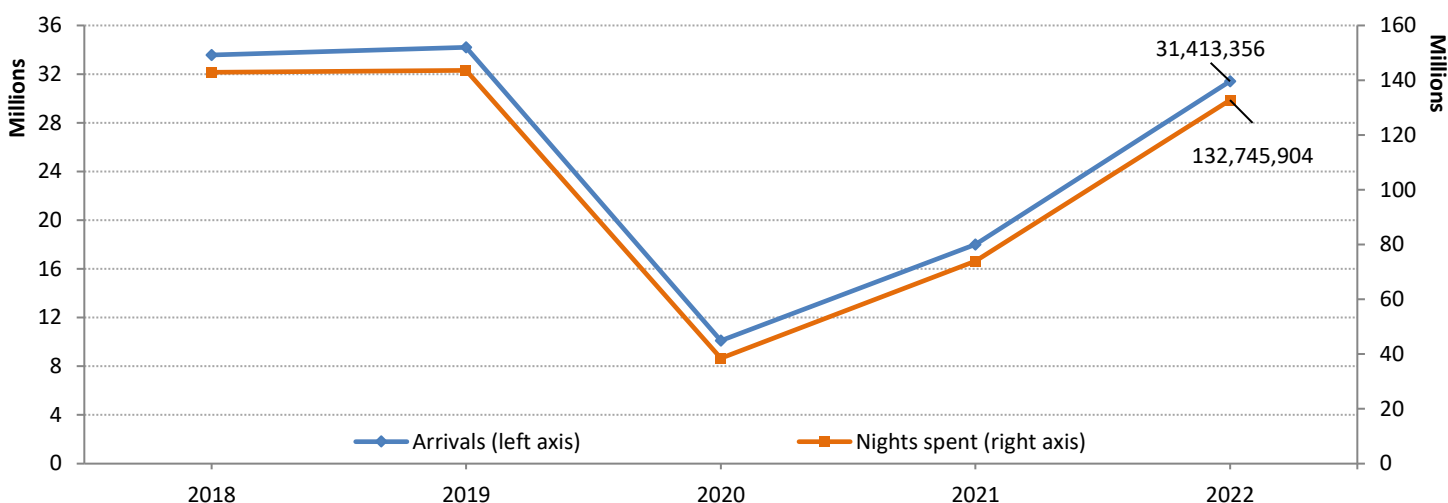
The greatest contribution concerning arrivals is recorded for Germany (14.9% of arrivals and 18.7% of nights spent) and for France (7.8% of arrivals and 6.7% of nights spent). As regards the rest of the European countries, the greatest contribution is recorded for the United Kingdom (16.0% of arrivals and 18.8% of nights spent) (Tables 5 and 6).

When comparing the data of arrivals and nights spent in hotels, similar establishments, short-stay accommodation establishments and tourist campsites by country of residence of the year 2022 with the corresponding data of the year 2021, a significant increase of arrivals, in absolute values, is recorded, among EU Members States, for Germany (38.8% in arrivals and 46.7% in nights spent), France (41.9% in arrivals and 47.4% in nights spent) and Italy (90.5% in arrivals and 98.9% in nights spent).

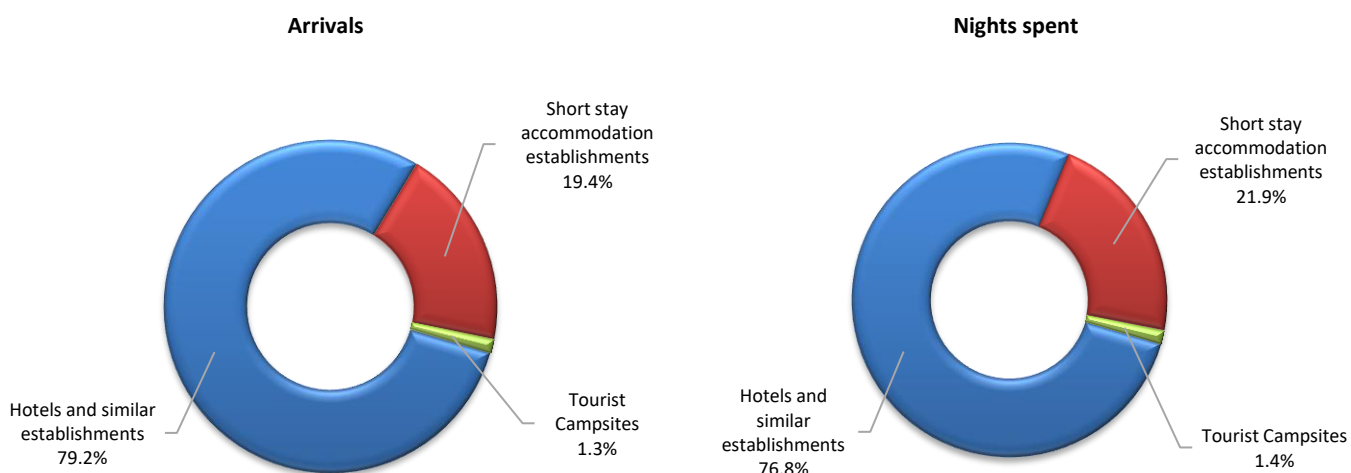
As regards the other European countries an increase of arrivals, in absolute values, is recorded for the United Kingdom (220.6% in arrivals and 249.6% in nights spent) and Serbia (115.1% in arrivals and 110.7% in nights spent).

From the rest of the continents, a significant increase in arrivals, in absolute values, is recorded from America, and, in particular, for the United States of America (155.7% in arrivals and 154.3% in nights spent) (Tables 5 and 6).

Graph 2. Evolution of total arrivals and nights spent of residents and non-residents in hotels and similar establishments (NACE Rev.2, 55.1) , tourist campsites (NACE Rev.2, 55.3) and short-stay accommodation establishments (NACE Rev.2, 55.2), 2018-2022



Graph 3: Percentage (%) distribution of arrivals and nights spent in hotels and similar establishments (NACE Rev.2, 55.1), tourist campsites (NACE Rev.2, 55.3) and short-stay accommodation establishments (NACE Rev.2, 55.2), 2022



Graph 4. Arrivals and nights spent of residents and non residents in hotels and similar establishments (NACE Rev.2, 55.1), tourist campsites (NACE Rev.2, 55.3) and short-stay accommodation establishments (NACE Rev.2, 55.2), 2022

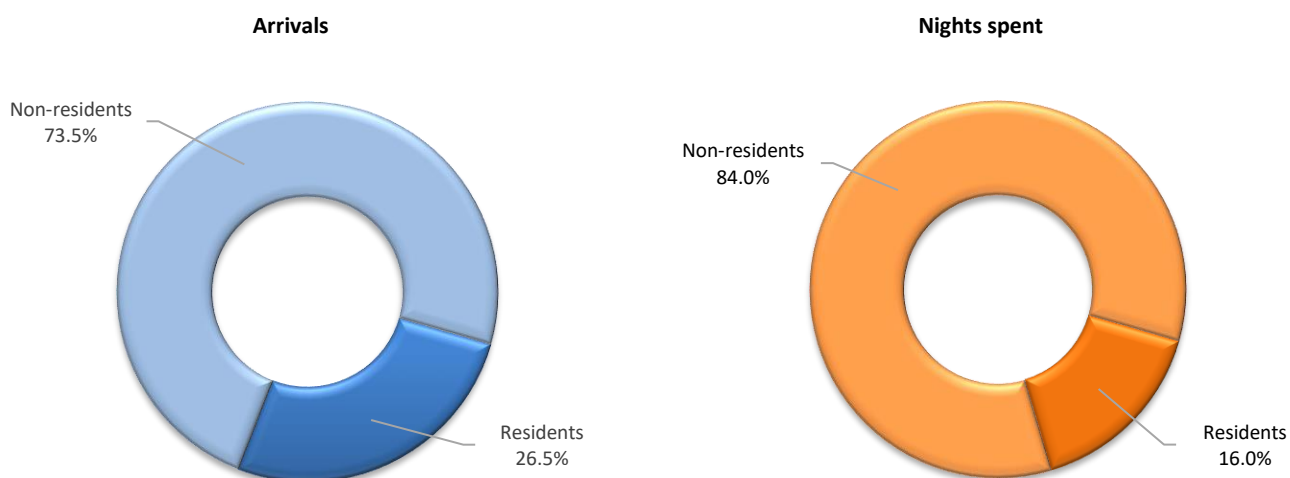


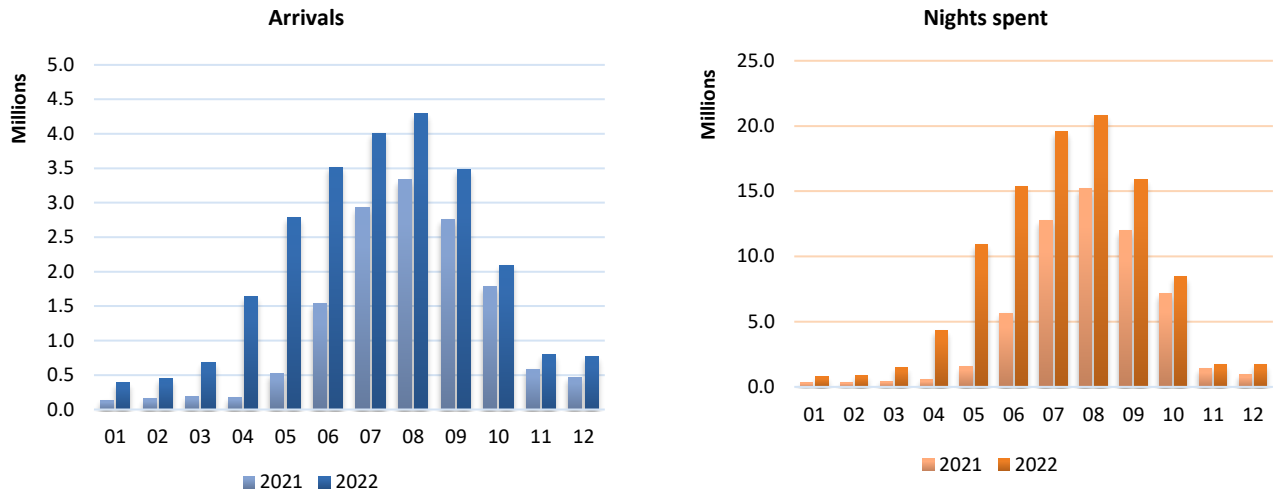
Table 1. Arrivals of residents and non-residents at hotels, similar establishments, tourist campsites and short-stay accommodation establishments by month, 2021 and 2022

Month	2021							2022							Change % of total 2022/2021
	Hotels and similar establishments			Tourist Campsites		Short stay accommodation establishments		Hotels and similar establishments			Tourist Campsites		Short stay accommodation establishments		
	Total	Residents	Non residents	Residents	Non residents	Residents	Non residents	Total	Residents	Non residents	Residents	Non residents	Residents	Non residents	
Total	18,015,347	4,464,827	10,131,084	121,871	164,238	1,065,858	2,067,469	31,413,356	6,663,492	18,229,591	142,528	272,678	1,505,868	4,599,199	74.4
January	146,591	109,077	25,879	3	93	9,443	2,096	432,152	293,428	94,120	82	256	34,371	9,895	194.8
February	169,046	129,438	27,284	3	89	10,102	2,130	488,775	322,442	122,033	66	228	33,018	10,988	189.1
March	207,799	151,400	40,449	4	105	12,970	2,871	737,333	412,626	270,124	98	623	40,954	12,908	254.8
April	193,278	132,060	46,335	39	646	11,198	3,000	1,818,043	574,076	1,058,622	671	7,309	58,495	118,870	840.6
May	605,147	221,367	304,224	2,098	5,403	27,995	44,060	3,193,521	543,811	2,238,438	4,096	26,867	66,600	313,709	427.7
June	1,921,447	512,777	1,025,518	13,833	20,853	125,346	223,120	4,469,678	650,629	2,867,128	17,622	41,763	172,918	719,618	132.6
July	3,765,280	669,063	2,263,857	40,458	44,284	242,101	505,517	5,506,656	788,151	3,220,971	45,979	67,632	309,054	1,074,869	46.2
August	4,438,395	815,219	2,524,132	57,323	53,814	373,255	614,652	6,222,628	944,643	3,344,224	65,100	80,079	473,528	1,315,054	40.2
September	3,367,348	554,621	2,201,170	7,468	31,787	123,705	448,597	4,436,623	629,882	2,856,127	7,932	41,521	156,979	744,182	31.8
October	2,031,275	457,187	1,326,912	561	6,361	50,848	189,406	2,409,230	538,194	1,558,306	604	5,463	65,394	241,269	18.6
November	645,128	355,607	231,515	43	531	36,076	21,356	866,741	448,695	349,589	158	598	41,757	25,944	34.4
December	524,613	357,011	113,809	38	272	42,819	10,664	831,976	516,915	249,909	120	339	52,800	11,893	58.6

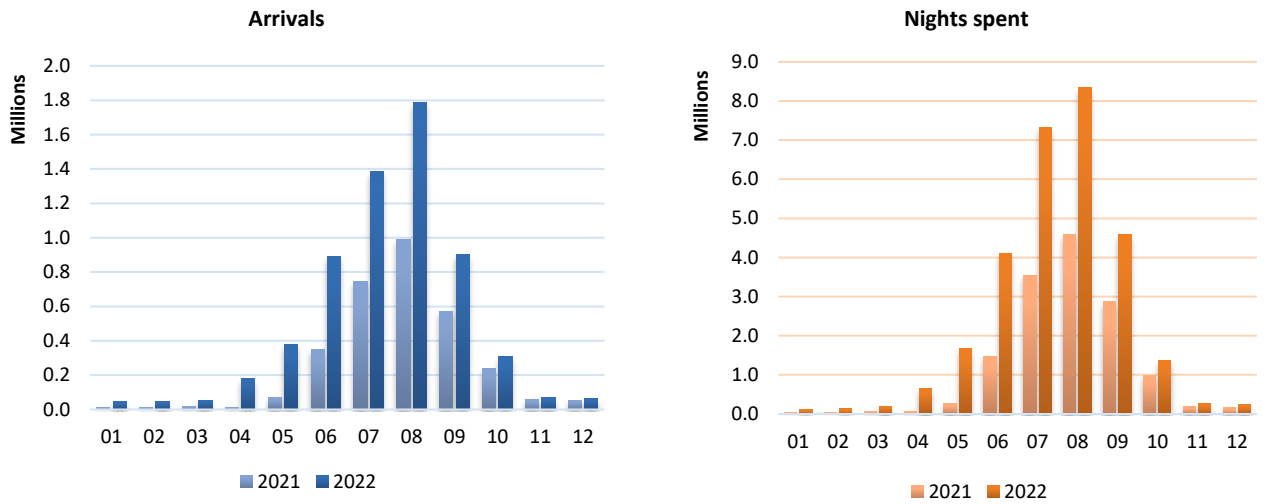
Table 2. Nights spent of residents and non-residents in hotels, similar establishments, tourist campsites and short-stay accommodation establishments by month, 2021 and 2022

Month	2021							2022							Change % of total 2022/2021
	Hotels and similar establishments			Tourist Campsites		Short stay accommodation establishments		Hotels and similar establishments			Tourist Campsites		Short stay accommodation establishments		
	Total	Residents	Non residents	Residents	Non residents	Residents	Non residents	Total	Residents	Non residents	Residents	Non residents	Residents	Non residents	
Total	73,886,813	10,774,075	47,570,569	602,966	674,917	3,586,167	10,678,119	132,745,904	15,253,512	86,647,511	788,966	1,050,838	5,153,336	23,851,741	79.7
January	380,183	235,549	97,587	35	525	38,522	7,965	890,680	556,825	216,583	452	962	87,021	28,837	134.3
February	408,460	268,764	98,917	30	474	33,490	6,785	1,012,437	598,893	284,136	417	676	98,704	29,611	147.9
March	509,539	323,584	126,776	8	371	48,113	10,687	1,684,839	799,360	682,589	441	1,627	165,393	35,429	230.7
April	591,166	365,594	169,165	245	2,917	39,659	13,586	5,002,313	1,103,841	3,220,214	2,595	17,501	186,215	471,947	746.2
May	1,883,756	436,456	1,161,052	6,070	18,340	73,440	188,398	12,694,208	1,098,340	9,806,073	24,917	87,464	204,485	1,472,929	573.9
June	7,273,925	1,129,599	4,528,671	52,151	87,889	370,356	1,105,259	19,739,970	1,487,306	13,874,029	101,744	166,617	591,083	3,519,191	171.4
July	16,705,834	1,863,283	10,920,933	196,780	193,850	881,936	2,649,052	27,445,185	2,151,453	17,458,647	242,839	281,617	1,105,287	6,205,342	64.3
August	20,317,996	2,563,288	12,622,728	301,913	232,325	1,257,280	3,340,462	29,824,098	3,005,791	17,772,880	360,372	329,378	1,521,173	6,834,504	46.8
September	14,995,441	1,255,272	10,714,834	43,072	116,628	434,478	2,431,157	20,688,693	1,444,384	14,458,259	50,670	146,570	543,764	4,045,046	38.0
October	8,147,055	961,998	6,175,654	2,037	18,485	163,054	825,827	9,858,886	1,102,521	7,374,691	3,089	14,962	268,258	1,095,365	21.0
November	1,574,631	697,240	687,163	324	1,963	123,005	64,936	1,967,281	838,694	868,718	797	2,274	182,898	73,900	24.9
December	1,098,827	673,448	267,089	301	1,150	122,834	34,005	1,937,314	1,066,104	630,692	633	1,190	199,055	39,640	76.3

Graph 5. Arrivals and nights spent in hotels and similar establishments (NACE Rev.2, 55.1) by month, 2021-2022



Graph 6. Arrivals and nights spent in short-stay accommodation establishments (NACE Rev.2, 55.2) by month, 2021-2022



Graph 7. Arrivals and nights spent in tourist campsites (NACE Rev.2, 55.3) by month, 2021-2022

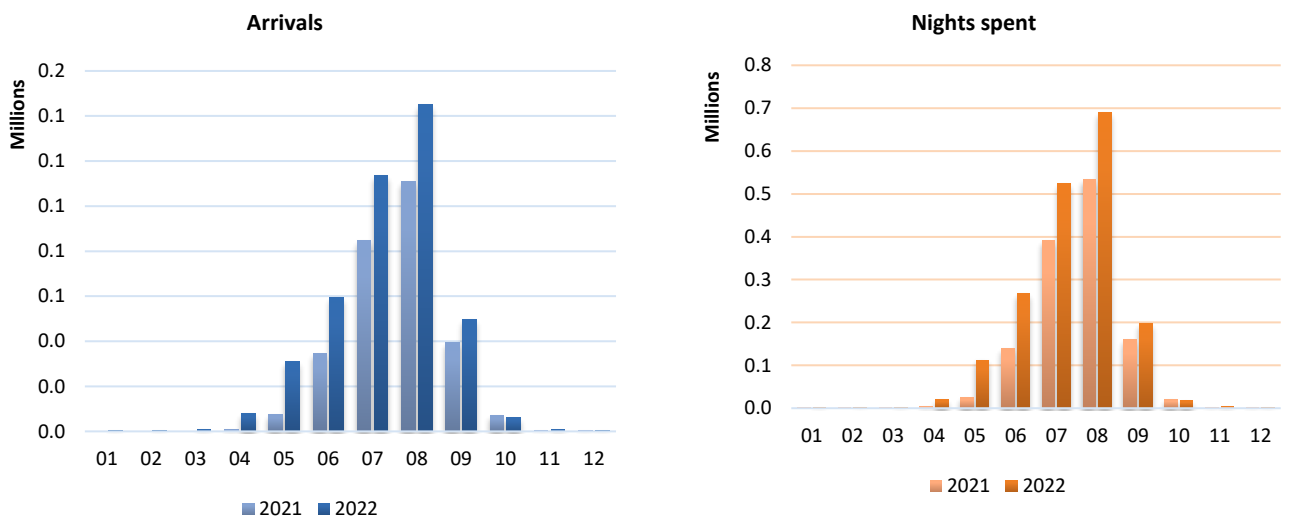


Table 3. Arrivals at hotels and similar establishments (NACE Rev.2, 55.1), tourist campsites (NACE Rev.2, 55.3) and short-stay accommodation establishments (NACE Rev.2, 55.2), by NUTS2 region, 2021 and 2022

	2021					2022					Change % of total 2022/2021
	Total	Hotels and similar establishments	Tourist Campsites	Short stay accommodation establishments	Percentage (%) of total	Total	Hotels and similar establishments	Tourist Campsites	Short stay accommodation establishments	Percentage (%) of total	
Total	18,015,347	14,595,911	286,109	3,133,327	100.0	31,413,356	24,893,083	415,206	6,105,067	100.0	74.4
Anatoliki Makedonia, Thraki	474,032	360,118	10,900	103,014	2.6	842,820	630,606	25,818	186,396	2.7	77.8
Kentriki Makedonia	2,179,905	1,658,459	111,571	409,875	12.1	3,897,420	2,793,746	118,085	985,589	12.4	78.8
Dytiki Makedonia ⁽¹⁾	85,021	78,556		6,465	0.5	140,786	126,390		14,396	0.4	65.6
Ipeiros	496,190	340,259	10,570	145,361	2.8	928,133	591,962	13,837	322,334	3.0	87.1
Thessalia	748,069	556,126	20,032	171,911	4.2	1,255,380	940,753	26,784	287,843	4.0	67.8
Stereia Ellada	543,635	424,945	13,047	105,643	3.0	898,926	735,320	17,270	146,336	2.9	65.4
Ionia Nisia	1,704,056	1,325,386	14,674	363,996	9.5	2,785,360	2,129,309	22,897	633,154	8.9	63.5
Dytiki Ellada	425,408	373,859	15,414	36,135	2.4	755,439	668,379	26,563	60,497	2.4	77.6
Peloponnisos	1,097,424	805,477	57,308	234,639	6.1	1,675,784	1,252,734	83,032	340,018	5.3	52.7
Attiki	2,453,954	2,265,178	3,962	184,814	13.6	4,656,519	4,379,766	8,559	268,194	14.8	89.8
Voreio Aigaio ⁽²⁾	251,181	182,843		68,338	1.4	493,331	353,857		138,776	1.6	96.4
Notio Aigaio ⁽²⁾	4,164,557	3,253,906	21,633	889,018	23.1	7,178,321	5,422,141	58,725	1,698,153	22.9	72.4
Kriti	3,391,915	2,970,799	6,998	414,118	18.8	5,905,137	4,868,120	13,636	1,023,381	18.8	74.1

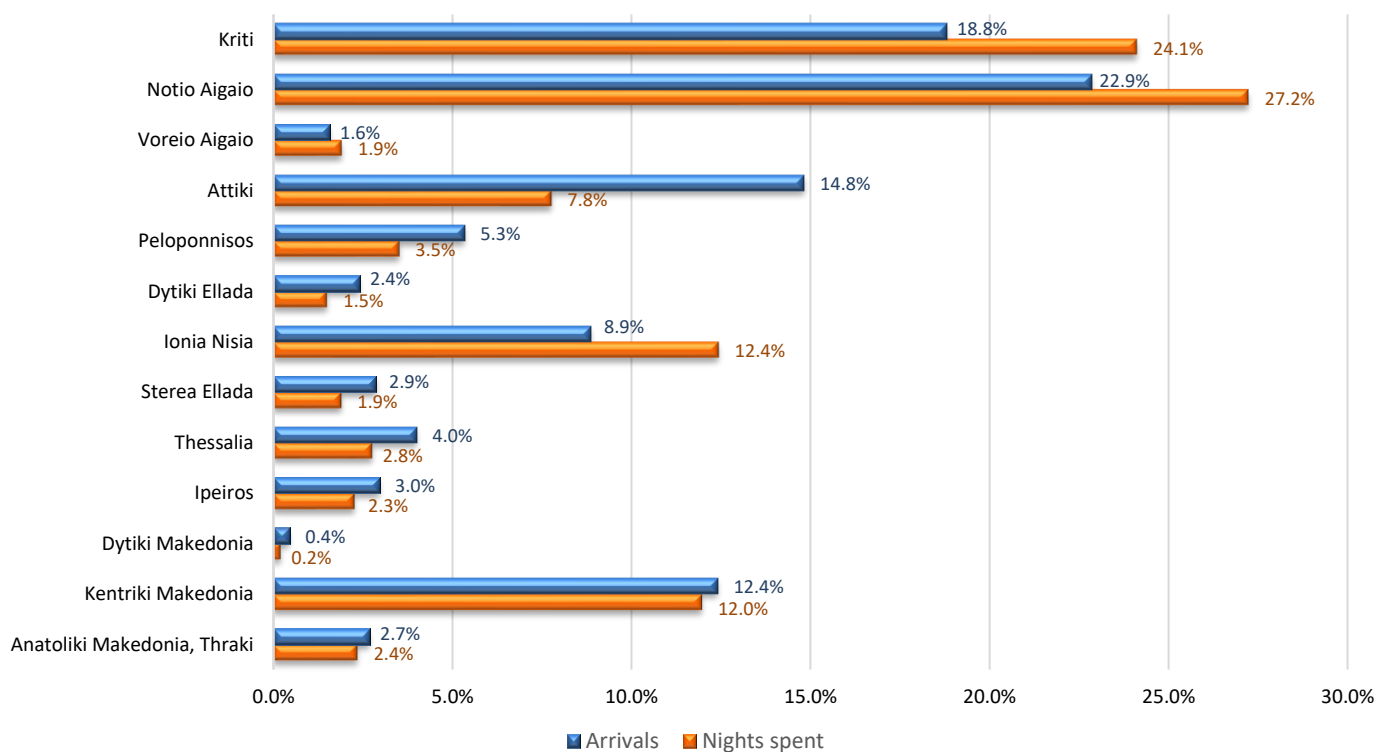
Table 4. Nights spent at hotels and similar establishments (NACE Rev.2, 55.1), tourist campsites (NACE Rev.2, 55.3) and short-stay accommodation establishments (NACE Rev.2, 55.2), by NUTS2 region, 2021 and 2022

	2021					2022					Change % of total 2022/2021
	Total	Hotels and similar establishments	Tourist Campsites	Short stay accommodation establishments	Percentage (%) of total	Total	Hotels and similar establishments	Tourist Campsites	Short stay accommodation establishments	Percentage (%) of total	
Total	73,886,813	58,344,644	1,277,883	14,264,286	100.0	132,745,904	101,901,023	1,839,804	29,005,077	100.0	79.7
Anatoliki Makedonia, Thraki	1,754,190	1,238,431	59,121	456,638	2.4	3,124,783	2,036,923	114,427	973,433	2.4	78.1
Kentriki Makedonia	8,681,934	5,792,499	615,988	2,273,447	11.8	15,889,734	9,835,772	772,666	5,281,296	12.0	83.0
Dytiki Makedonia ⁽¹⁾	183,720	167,669		16,051	0.2	279,826	248,818		31,008	0.2	52.3
Ipeiros	1,475,880	803,131	45,357	627,392	2.0	3,021,521	1,462,910	58,495	1,500,116	2.3	104.7
Thessalia	2,138,203	1,428,986	66,702	642,515	2.9	3,666,673	2,414,483	93,057	1,159,133	2.8	71.5
Stereia Ellada	1,541,984	1,102,170	40,173	399,641	2.1	2,529,258	1,919,741	55,778	553,739	1.9	64.0
Ionia Nisia	9,257,610	6,769,045	72,794	2,415,771	12.5	16,512,634	12,058,229	112,172	4,342,233	12.4	78.4
Dytiki Ellada	1,192,890	1,061,237	44,643	87,010	1.6	2,001,940	1,741,135	71,602	189,203	1.5	67.8
Peloponnisos	3,007,818	2,151,118	227,824	628,876	4.1	4,675,172	3,441,825	306,870	926,477	3.5	55.4
Attiki	5,428,008	4,926,062	8,336	493,610	7.3	10,313,319	9,657,945	19,191	636,183	7.8	90.0
Voreio Aigaio ⁽²⁾	135,2305	94,2827		40,9478	1.8	2,545,896	1,777,231		767,168	1.9	88.3
Notio Aigaio ⁽²⁾	19,898,605	16,522,661	74,705	3,301,239	26.9	36,160,001	28,478,737	194,334	7,488,427	27.2	81.7
Kriti	17,973,666	15,438,808	22,240	2,512,618	24.3	32,025,147	26,827,274	41,212	5,156,661	24.1	78.2

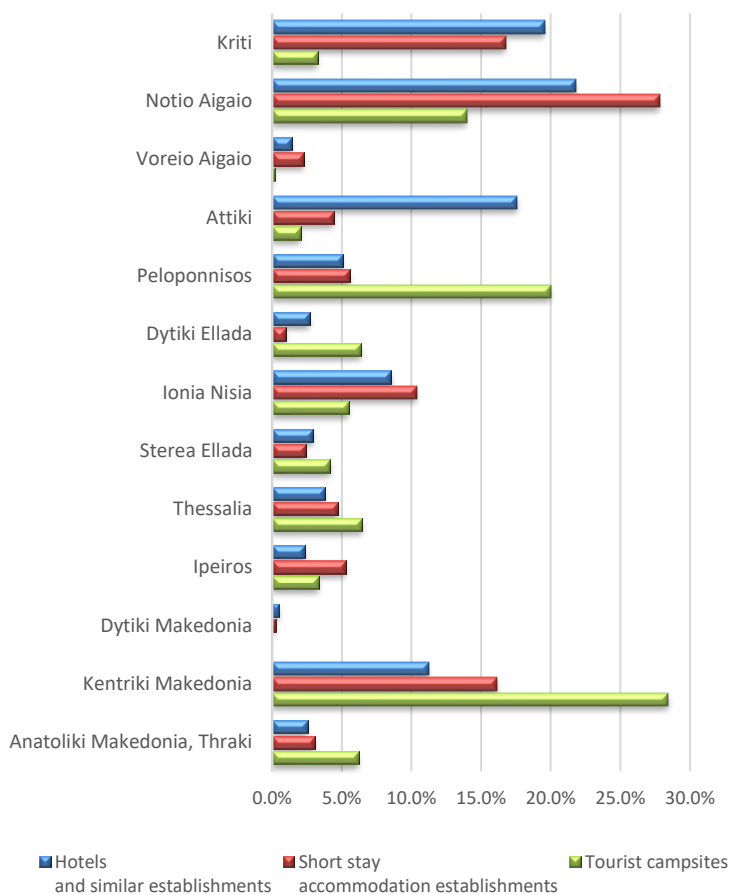
⁽¹⁾ The arrivals and nights spent refer to hotels, similar establishments and tourist campsites, which are registered to the Hellenic Chamber of Hotels. For the Region of Dytiki Makedonia there are not tourist campsites registered to the Hellenic Chamber of Hotels.

⁽²⁾ For reasons of statistical confidentiality regarding the protection of the identity of the surveyed units, data on tourist campsites in the Region of Voreio Aigaio have been included in the relevant data for the Region of Notio Aigaio.

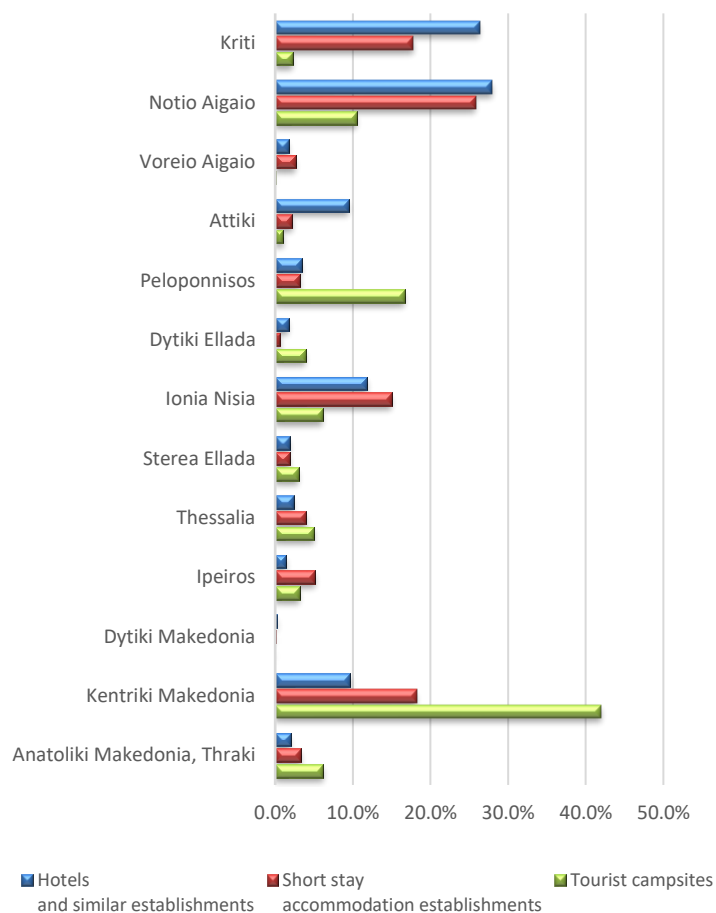
Graph 8. Percentage distribution of arrivals and nights spent at hotels, similar establishments (NACE Rev.2, 55.1), tourist campsites (NACE Rev.2, 55.3) and short stay accommodation establishments (NACE Rev.2, 55.2), by NUTS 2 Region, 2022



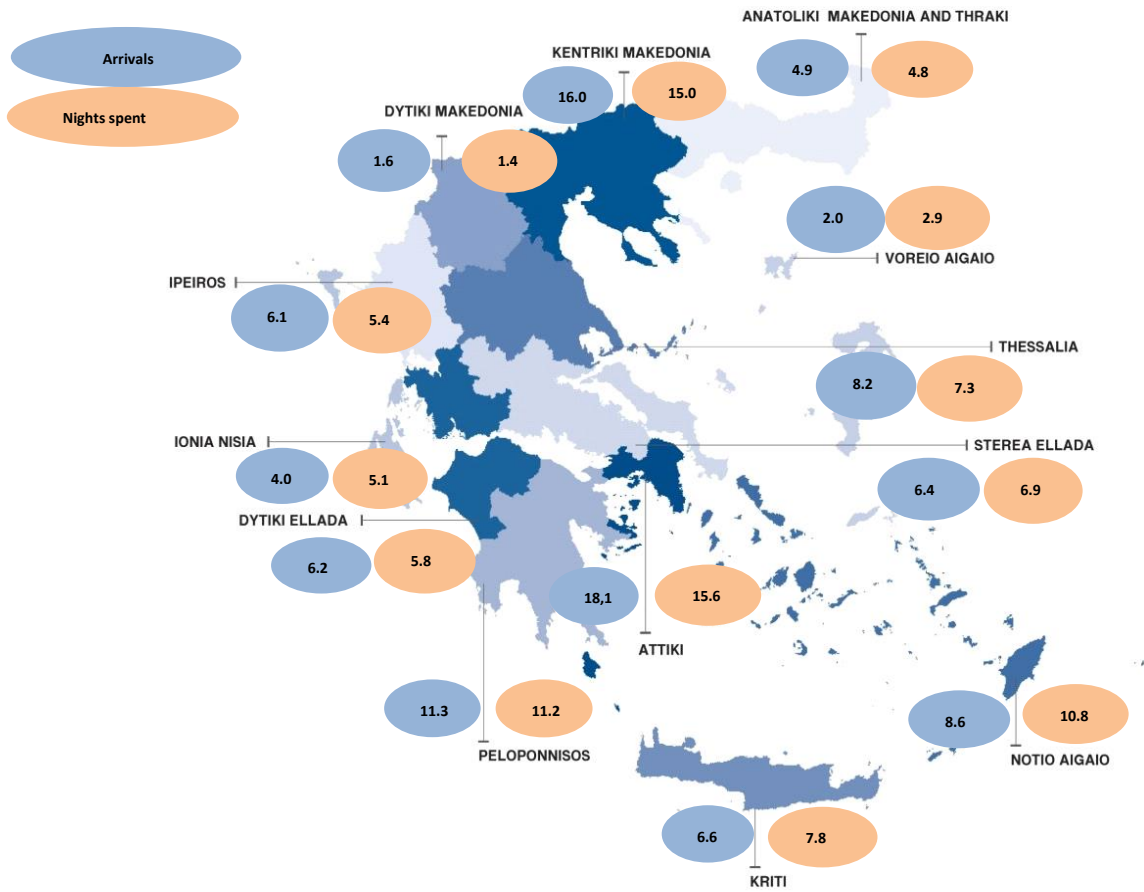
Graph 9. Percentage (%) distribution of arrivals by type of establishment, NUTS 2 region, 2022



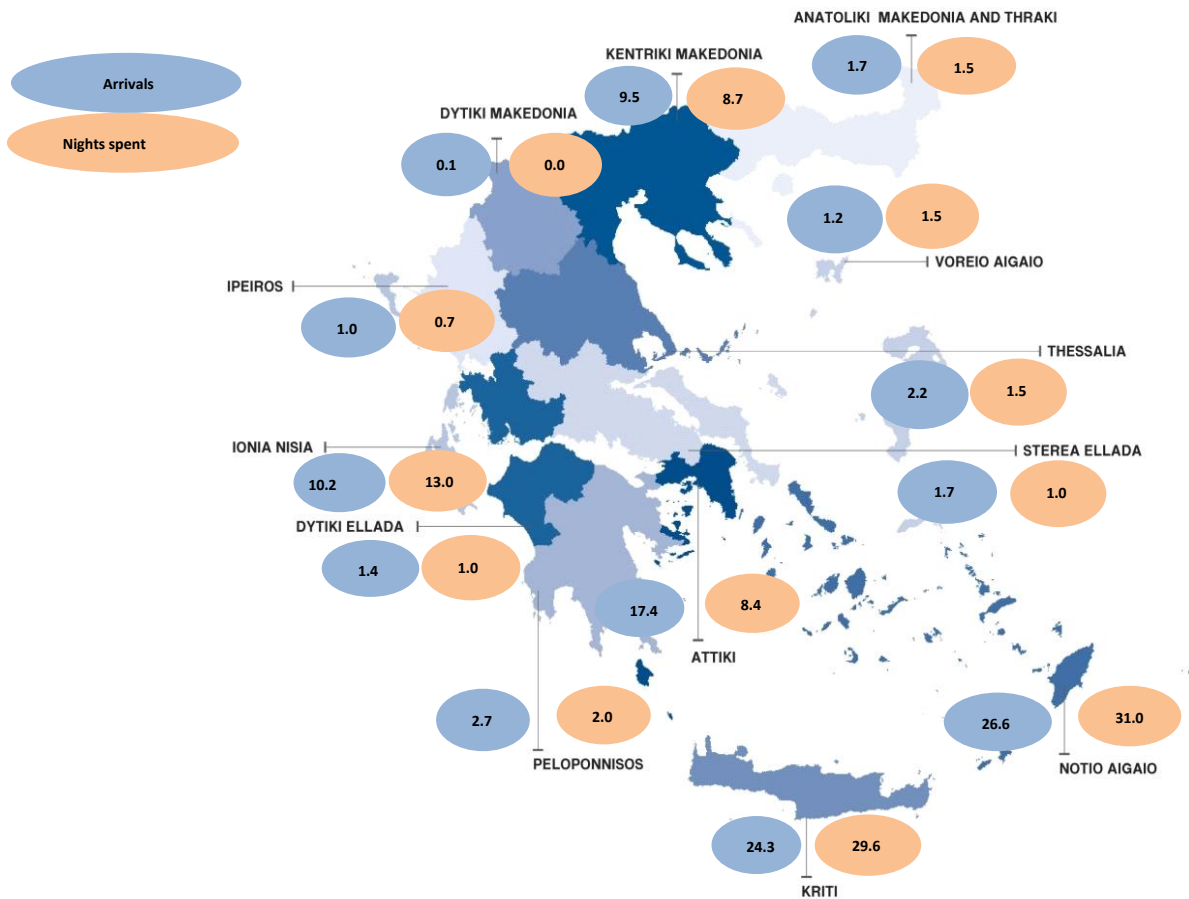
Graph 10. Percentage (%) distribution of nights spent by type of establishment, NUTS 2 region, 2022



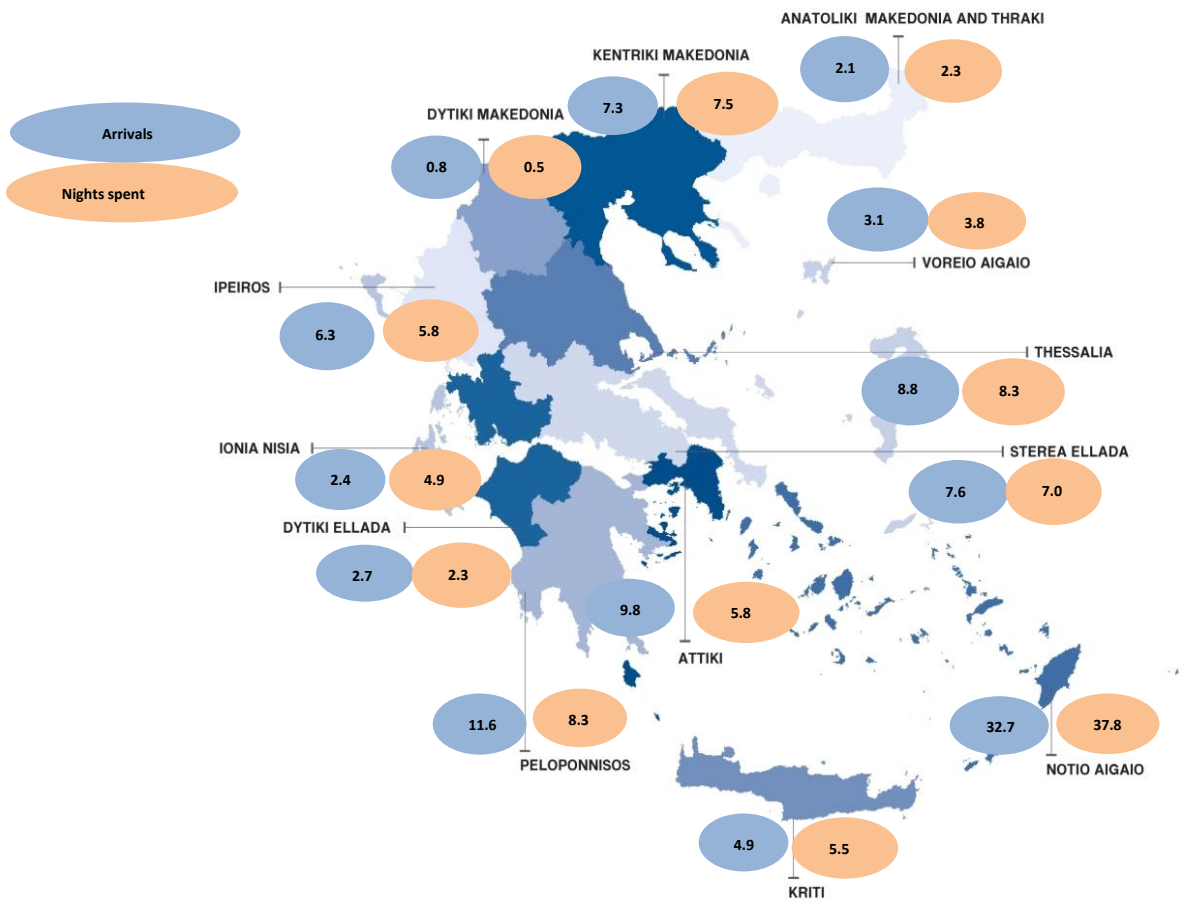
Graph 11. Percentage (%) of arrivals and nights spent of residents in hotels (NACE Rev.2, 55.1), NUTS 2 region, 2022



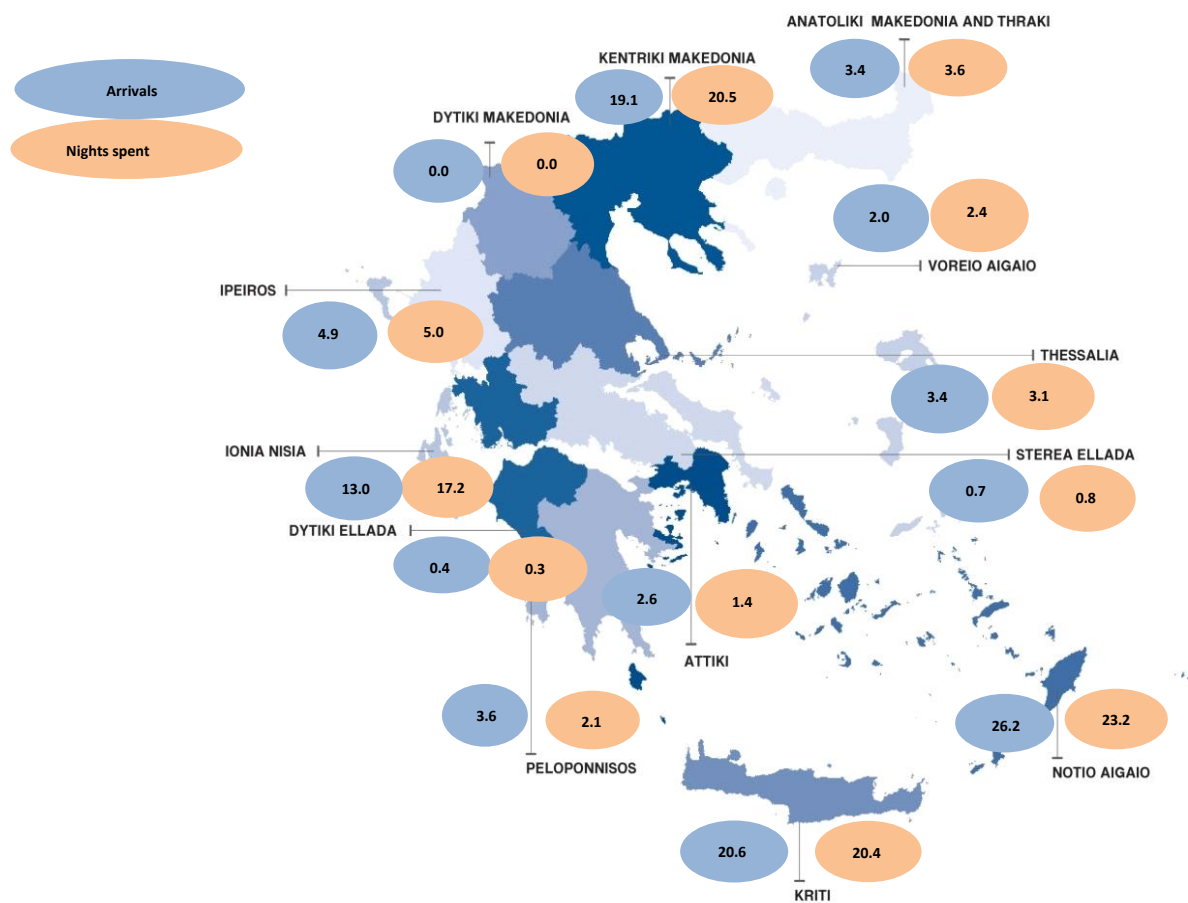
Graph 12. Percentage (%) of arrivals and nights spent of non residents in hotels (NACE Rev.2, 55.1), NUTS 2 region, 2022



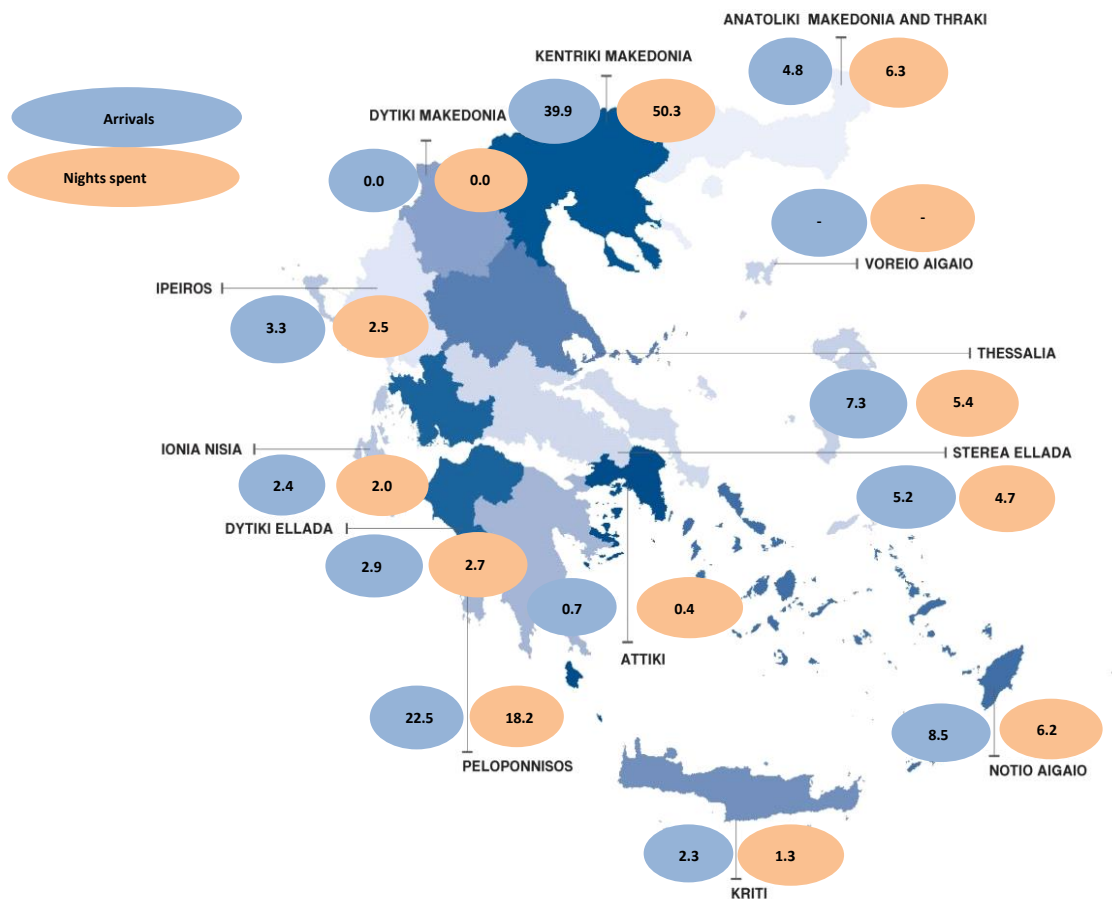
Graph 13. Percentage (%) of arrivals and nights spent of residents in short stay accomodation establishments (NACE Rev.2, 55.2), NUTS 2 region, 2022



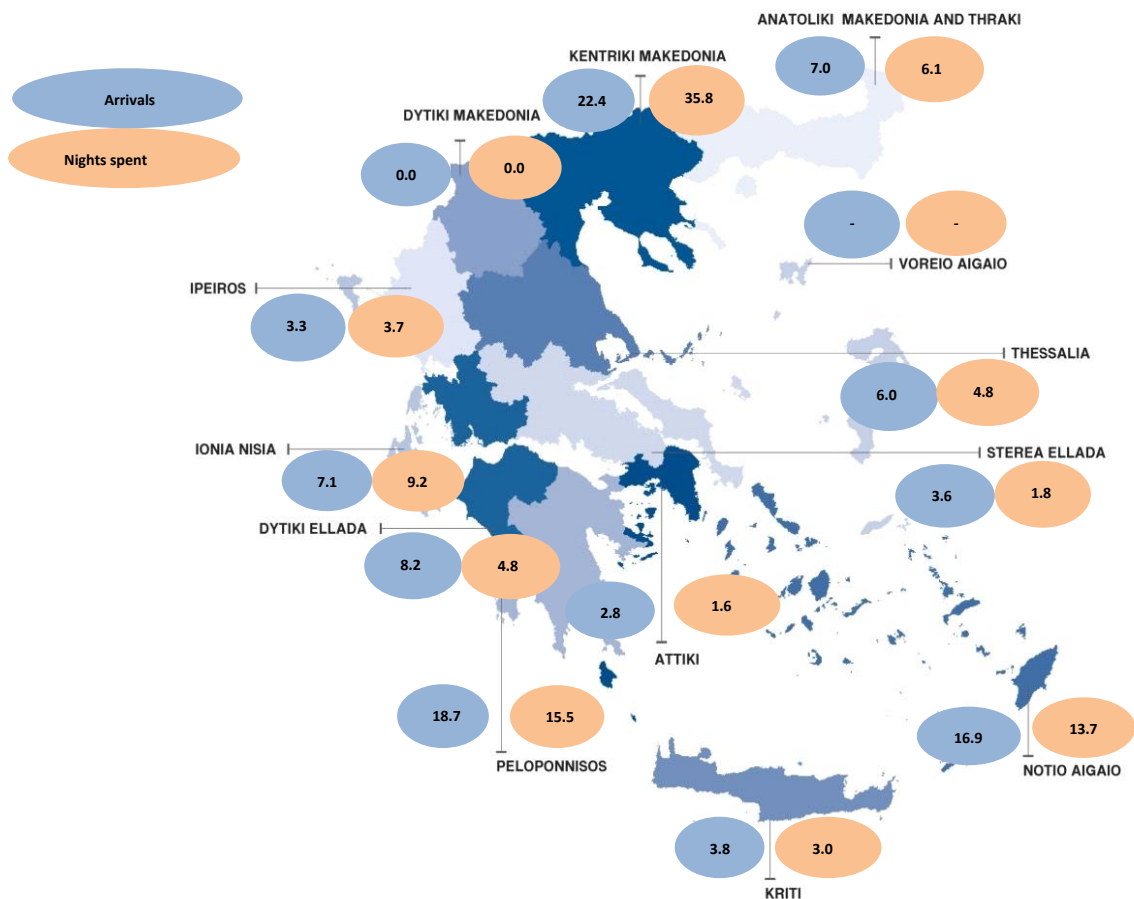
Graph 14. Percentage (%) of arrivals and nights spent of non residents in short stay accomodation establishments (NACE Rev.2, 55.2), NUTS 2 region, 2022



Graph 15. Percentage (%) of arrivals and nights spent of residents in tourist campsites (NACE Rev.2, 55.3), NUTS 2 region, 2022⁽¹⁾



Graph 16. Percentage (%) of arrivals and nights spent of non residents in tourist campsites (NACE Rev.2, 55.3), NUTS 2 region, 2022 ⁽¹⁾



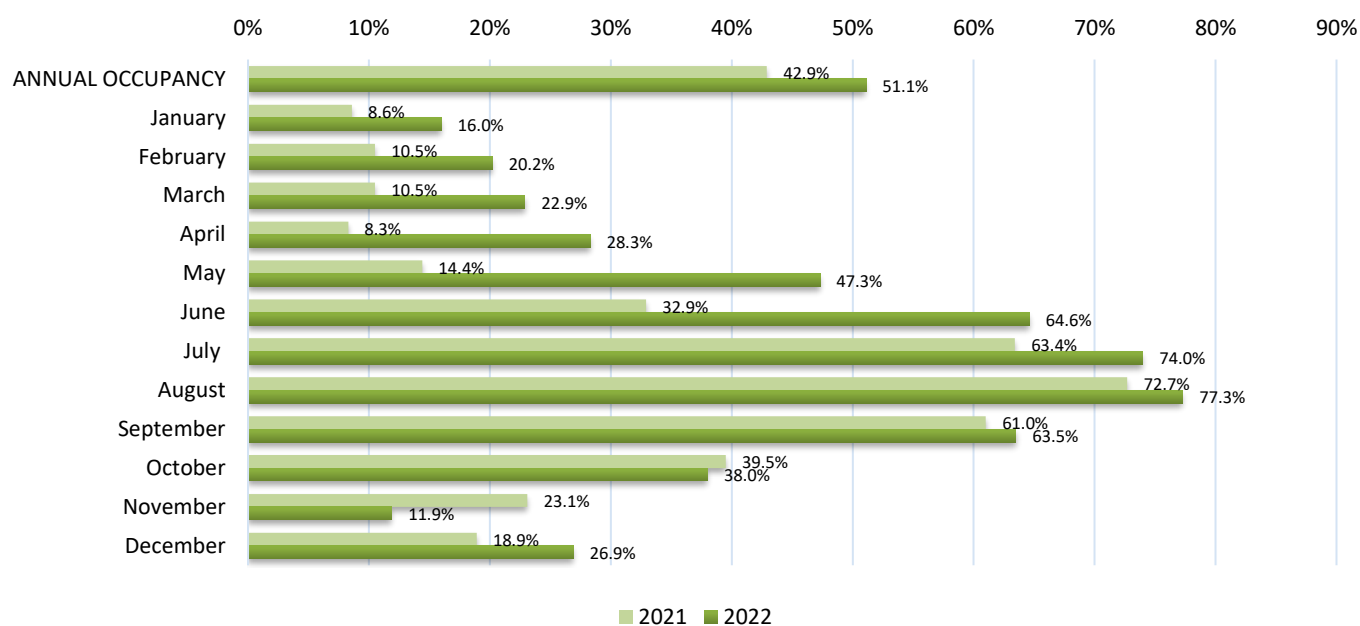
⁽¹⁾ For reasons of statistical confidentiality regarding the protection of the identity of the surveyed units, data on tourist campsites in the Region of Voreio Aigaio have been included in the relevant data for the Region of Notio Aigaio.

Table 5: Capacity by hotel category, 2022

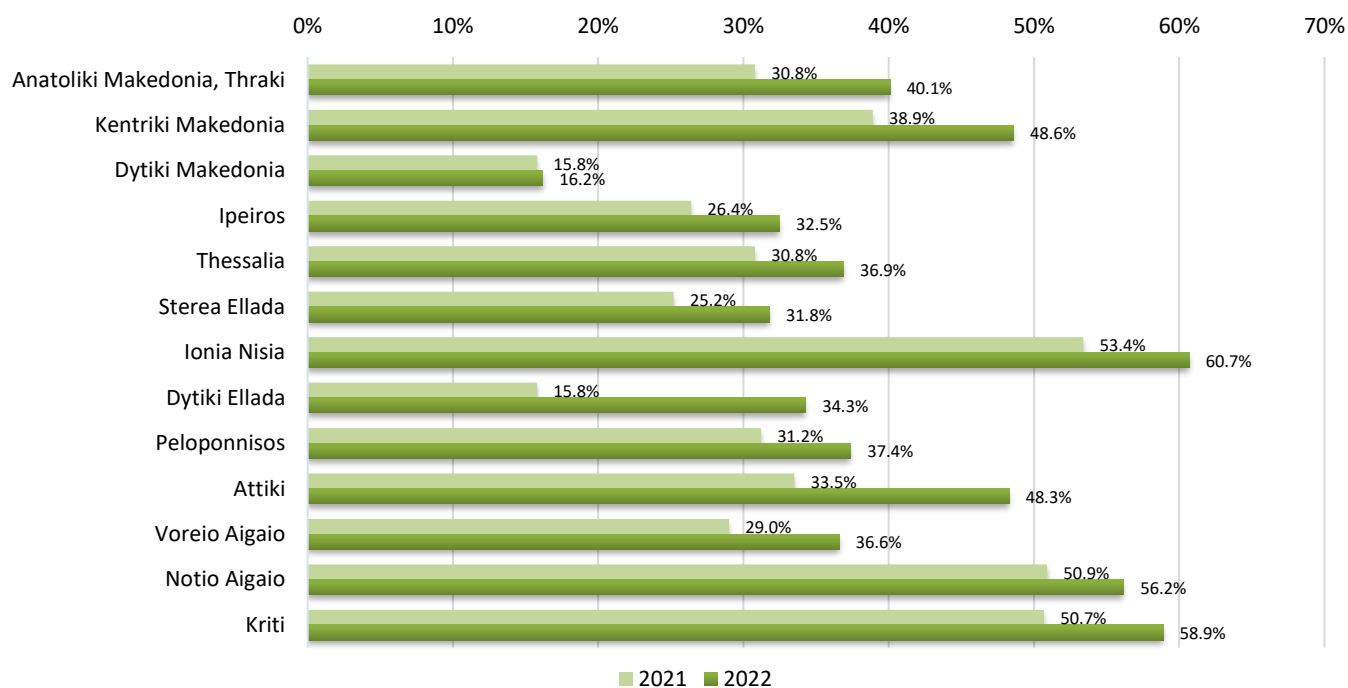
	Establishments	Rooms	Bed places
Total	10,087	443,835	885,624
5*****	744	99,985	204,420
4****	1,807	128,567	258,506
3***	2,903	103,236	202,421
2**	3,411	88,844	168,610
1*	1,222	23,203	46,667

Source: Hellenic Chamber of Hotels.

Graph 17. Occupancy rate of bed places in hotels and similar type accommodation establishments, by month, 2021 and 2022



Graph 18. Occupancy rate of bed places in hotels and similar type accommodation establishments, by NUTS 2 region, 2021 and 2022



Note: occupancy rates are calculated only for hotels and similar establishments (NACE Rev.2 55.1)

Table 6. Arrivals of non-residents at hotels, similar establishments and tourist campsites, by country of residence, 2021 and 2022

	2021					2022					Change % of total 2022/2021
	Total	Hotels and similar establishments	Tourist campsites	Short stay accommodation establishments	Percentage % of total	Total	Hotels and similar establishments	Tourist campsites	Short stay accommodation establishments	Percentage % of total	
Total	12,362,841	10,131,084	164,238	2,067,519	100.0	23,101,469	18,229,591	272,678	4,599,199	100.0	86.9
Europe	11,041,183	8,978,670	160,370	1,902,143	89.3	19,376,893	14,975,837	250,951	4,150,105	83.9	75.5
European Union	8,589,645	7,079,886	142,559	1,367,200	69.5	13,566,303	10,576,231	215,598	2,774,474	58.7	57.9
Austria	274,688	222,426	8,744	43,518	2.2	407,535	319,379	11,197	76,959	1.8	48.4
Belgium	322,610	288,325	2,398	31,887	2.6	439,382	369,695	4,010	65,677	1.9	36.2
Bulgaria	196,720	115,211	24,165	57,344	1.6	506,778	267,524	35,235	204,019	2.2	157.6
France	1,268,640	989,285	17,237	262,118	10.3	1,800,125	1,363,108	27,121	409,896	7.8	41.9
Germany	2,485,138	2,112,500	41,328	331,310	20.1	3,450,040	2,888,591	60,983	500,466	14.9	38.8
Denmark	325,453	302,836	645	21,972	2.6	475,666	405,381	978	69,307	2.1	46.2
Estonia	24,866	21,421	179	3,266	0.2	39,237	34,227	151	4,859	0.2	57.8
Ireland	69,177	52,970	1,580	14,627	0.6	161,708	128,602	2,423	30,683	0.7	133.8
Spain	184,340	141,504	2,559	40,277	1.5	375,618	284,535	4,377	86,706	1.6	103.8
Italy	574,693	371,467	12,341	190,885	4.6	1,095,042	676,752	22,035	396,255	4.7	90.5
Croatia	10,878	9,696	96	1,086	0.1	31,114	25,864	272	4,978	0.1	186.0
Cyprus	107,439	97,605	284	9,550	0.9	230,783	199,425	453	30,905	1.0	114.8
Latvia	27,050	25,198	198	1,654	0.2	36,782	32,319	83	4,380	0.2	36.0
Lithuania	58,270	53,449	205	4,616	0.5	90,451	80,777	368	9,306	0.4	55.2
Luxembourg	28,622	27,315	67	1,240	0.2	33,034	28,801	136	4,097	0.1	15.4
Malta	7,787	6,695	23	1,069	0.1	16,928	10,817	64	6,047	0.1	117.4
Netherlands	628,181	524,117	7,718	96,346	5.1	1,034,071	798,125	14,146	221,800	4.5	64.6
Hungary	111,651	84,780	1,812	25,059	0.9	181,004	119,035	3,210	58,759	0.8	62.1
Poland	626,574	577,740	6,032	42,802	5.1	831,138	735,237	8,194	87,707	3.6	32.6
Portugal	38,050	30,445	237	7,368	0.3	75,524	60,572	488	14,464	0.3	98.5
Romania	513,124	377,442	8,102	127,580	4.2	870,208	566,883	9,529	293,796	3.8	69.6
Slovakia	69,995	64,460	632	4,903	0.6	99,501	87,119	944	11,438	0.4	42.2
Slovenia	39,384	31,602	3,029	4,753	0.3	60,116	44,606	4,123	11,387	0.3	52.6
Sweden	308,095	288,975	429	18,691	2.5	607,436	519,040	874	87,522	2.6	97.2
Czechia	224,311	203,102	2,381	18,828	1.8	345,823	292,180	3,946	49,697	1.5	54.2
Finland	63,909	59,320	138	4,451	0.5	271,259	237,637	258	33,364	1.2	324.4
Total of other European countries	2,451,538	1,898,784	17,811	534,943	19.8	5,810,590	4,399,606	35,353	1,375,631	25.2	137.0
Iceland	3,859	3,690	3	166	0.0	12,262	11,812	32	418	0.1	217.8
Norway	48,200	41,131	93	6,976	0.4	343,003	293,180	337	49,486	1.5	611.6
Switzerland (incl. Liechtenstein)	302,708	254,965	6,701	41,042	2.4	419,860	350,265	9,490	60,105	1.8	38.7
United Kingdom	1,154,539	960,324	2,257	191,958	9.3	3,701,254	3,019,320	9,240	672,694	16.0	220.6
Russia	300,382	245,169	421	54,792	2.4	105,099	87,617	373	17,109	0.5	-65.0
Serbia	218,445	41,240	451	176,754	1.8	471,182	65,914	1,172	402,783	2.0	115.1
Turkey	39,454	34,751	435	4,268	0.3	226,151	190,009	1,593	34,549	1.0	473.2
Other European countries	383,951	317,514	7,450	58,987	3.1	531,779	381,489	13,116	138,487	2.3	38.8

	Total	Hotels and similar establishments	2021 Tourist campsites	Short stay accommodation establishments	Percentage % of total	Total	Hotels and similar establishments	2022 Tourist campsites	Short stay accommodation establishments	Percentage % of total	Change % of total 2022/2021
Africa	41,530	38,914	195	2,421	0.3	95,967	81,539	697	13,731	0.4	131.1
America	810,004	693,621	2,328	114,055	6.6	2,326,176	2,003,860	11,344	310,972	10.1	187.2
North America	767,821	658,560	1,690	107,571	6.2	2,091,396	1,795,091	8,558	287,747	9.1	172.4
USA	709,488	610,487	1,375	97,626	5.7	1,814,267	1,575,389	5,825	233,053	7.9	155.7
Canada	58,333	48,073	315	9,945	0.5	277,129	219,702	2,733	54,694	1.2	375.1
South and Central America	42,183	35,061	638	6,484	0.3	234,780	208,769	2,786	23,225	1.0	456.6
Asia	436,434	392,721	1,036	42,677	3.5	1,058,327	946,339	1,847	110,141	4.6	142.5
Japan	4,436	3,840	9	587	0.0	22,552	17,465	120	4,967	0.1	408.4
People's republic of China	14,251	12,441	41	1,769	0.1	56,323	47,896	191	8,236	0.2	295.2
Other Asian countries	417,747	376,440	986	40,321	3.4	979,452	880,978	1,536	96,938	4.2	134.5
Oceania	26,644	22,396	309	3,899	0.2	221,202	206,694	7,839	6,669	1.0	731.5
Australia	19,683	16,417	265	3,001	0.2	200,589	188,482	6,812	5,295	0.9	919.1
New Zealand and other Oceanian territories	6,921	5,979	44	898	0.1	20,613	18,212	1,027	1,374	0.1	197.8
Not specified	7,046	4,762	0	2,284	0.1	22,904	15,323	0	7,581	0.1	225.1

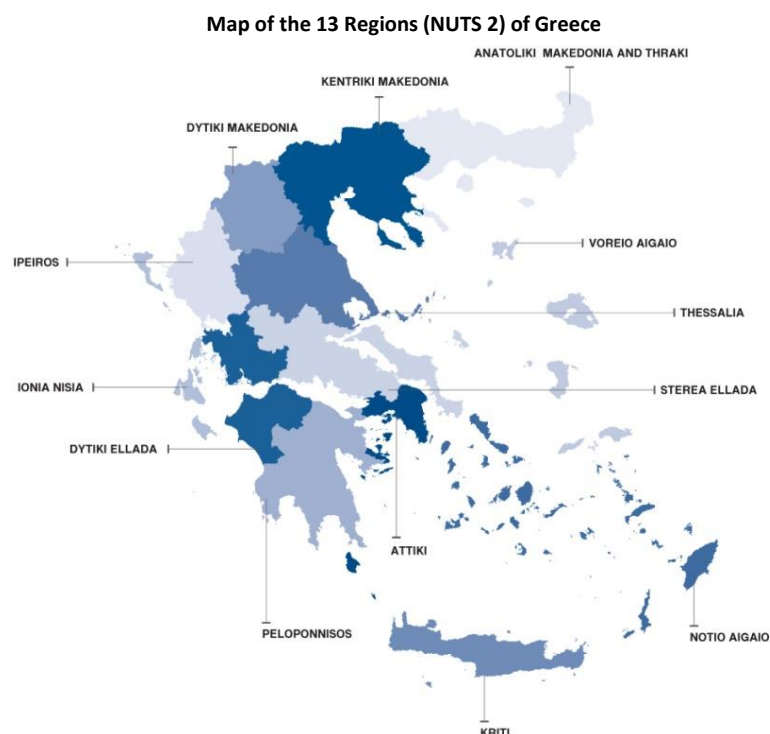
Table 7. Nights spent by non-residents in hotels, similar establishments and tourist campsites, by country of residence, 2021 and 2022

	2020					2021					Change % of total 2022/2021
	Total	Hotels and similar establishments	Tourist campsites	Short stay accommodation establishments	Percentage % of total	Total	Hotels and similar establishments	Tourist campsites	Short stay accommodation establishments	Percentage % of total	
Total	58,923,689	47,570,569	674,917	10,678,203	100.0	111,550,090	86,647,511	1,050,838	23,851,741	100.0	89.3
Europe	55,234,574	44,378,174	664,265	10,192,135	93.7	101,533,313	78,242,287	992,755	22,298,271	91.0	83.8
European Union	42,971,501	35,395,537	584,066	6,991,898	72.9	70,153,848	55,320,245	821,180	14,012,423	62.9	63.3
Austria	1,398,593	1,110,582	37,430	250,581	2.4	2,226,217	1,748,482	41,864	435,871	2.0	59.2
Belgium	1,586,532	1,434,800	6,893	144,839	2.7	2,144,787	1,846,154	11,270	287,363	1.9	35.2
Bulgaria	907,840	439,194	149,382	319,264	1.5	2,151,268	994,166	207,351	949,751	1.9	137.0
France	5,063,289	4,001,602	44,876	1,016,811	8.6	7,462,366	5,678,153	76,825	1,707,388	6.7	47.4
Germany	14,204,372	12,107,854	153,797	1,942,721	24.1	20,840,201	17,808,100	209,098	2,823,003	18.7	46.7
Denmark	1,692,317	1,557,270	2,620	132,427	2.9	2,839,332	2,468,222	3,613	367,497	2.5	67.8
Estonia	125,490	114,231	391	10,868	0.2	194,936	172,641	287	22,008	0.2	55.3
Ireland	279,260	208,947	7,474	62,839	0.5	734,719	567,498	8,939	158,282	0.7	163.1
Spain	460,846	345,259	6,900	108,687	0.8	1,005,863	710,923	11,275	283,665	0.9	118.3
Italy	2,344,618	1,393,241	47,544	903,833	4.0	4,664,577	2,719,296	76,215	1,869,066	4.2	98.9
Croatia	41,445	35,384	496	5,565	0.1	106,081	82,036	823	23,222	0.1	156.0
Cyprus	300,737	266,944	1,215	32,578	0.5	680,265	542,769	1,452	136,044	0.6	126.2
Latvia	134,818	128,115	380	6,323	0.2	167,119	147,882	246	18,991	0.1	24.0
Lithuania	306,602	284,345	476	21,781	0.5	465,534	423,370	1,008	41,156	0.4	51.8
Luxembourg	137,543	132,720	272	4,551	0.2	153,102	136,533	415	16,154	0.1	11.3
Malta	26,768	21,809	102	4,857	0.0	60,183	34,574	238	25,371	0.1	124.8
Netherlands	3,784,432	3,103,333	26,470	654,629	6.4	6,140,430	4,761,676	45,103	1,333,651	5.5	62.3
Hungary	557,462	421,217	8,617	127,628	0.9	1,005,332	653,685	15,645	336,002	0.9	80.3
Poland	3,409,559	3,174,415	21,678	213,466	5.8	4,645,501	4,182,338	30,492	432,671	4.2	36.2
Portugal	138,276	111,350	773	26,153	0.2	272,401	214,761	1,298	56,342	0.2	97.0
Romania	2,399,928	1,655,139	44,512	700,277	4.1	4,158,694	2,502,296	44,102	1,612,296	3.7	73.3
Slovakia	396,526	364,050	2,591	29,885	0.7	608,448	537,121	4,617	66,710	0.5	53.4
Slovenia	187,636	156,625	9,218	21,793	0.3	298,556	211,257	12,674	74,625	0.3	59.1
Sweden	1,394,472	1,287,991	1,295	105,186	2.4	3,322,780	2,875,745	3,145	443,890	3.0	138.3
Czechia	1,371,237	1,246,029	8,449	116,759	2.3	2,197,661	1,855,030	12,328	330,303	2.0	60.3
Finland	320,903	293,091	215	27,597	0.5	1,607,495	1,445,537	857	161,101	1.4	400.9
Total of other European countries	12,263,073	8,982,637	80,199	3,200,237	20.8	31,379,465	22,922,042	171,575	8,285,848	28.1	155.9
Iceland	18,236	17,448	10	778	0.0	62,416	60,330	83	2,003	0.1	242.3
Norway	245,845	203,080	324	42,441	0.4	2,173,572	1,897,161	1,091	275,320	1.9	784.1
Switzerland (incl. Liechtenstein)	1,345,698	1,143,995	21,317	180,386	2.3	1,947,042	1,627,871	26,854	292,317	1.7	44.7
United Kingdom	5,986,086	4,866,066	8,105	1,111,915	10.2	20,925,026	16,773,586	33,738	4,117,702	18.8	249.6
Russia	1,416,215	1,120,667	1,465	294,083	2.4	459,543	364,949	1,363	93,231	0.4	-67.6
Serbia	1,467,754	250,465	2,817	1,214,472	2.5	3,051,774	414,731	9,533	2,667,904	2.8	110.7
Turkey	110,095	90,847	1,449	17,799	0.2	498,762	397,007	3,859	97,896	0.4	353.0
Other European countries	1,673,144	1,290,069	44,712	338,363	2.8	2,261,330	1,386,407	95,054	739,475	2.0	32.7

	2021					2022					Change % of total 2022/2021
	Total	Hotels and similar establishments	Tourist campsites	Short stay accommodation establishments	Percentage % of total	Total	Hotels and similar establishments	Tourist campsites	Short stay accommodation establishments	Percentage % of total	
Africa	154,952	146,400	561	7,991	0.3	308,860	259,411	2,148	47,301	0.3	99.3
America	2,079,485	1,741,330	6,927	331,228	3.5	5,950,847	4,827,223	30,676	1,092,948	5.3	186.2
North America	1,944,509	1,627,214	5,248	312,047	3.3	5,328,143	4,281,401	22,739	1,024,003	4.8	174.0
USA	1,788,873	1,505,316	4,207	279,350	3.0	4,549,649	3,717,141	15,305	817,203	4.1	154.3
Canada	155,636	121,898	1,041	32,697	0.3	778,494	564,260	7,434	206,800	0.7	400.2
South and Central America	134,976	114,116	1,679	19,181	0.2	622,704	545,822	7,937	68,945	0.6	361.3
Asia	1,345,154	1,216,290	2,352	126,512	2.3	3,105,569	2,722,277	4,693	378,599	2.8	130.9
Japan	12,389	9,940	23	2,426	0.0	62,499	44,938	301	17,260	0.1	404.5
People's republic of China	40,470	32,879	157	7,434	0.1	134,573	108,292	445	25,836	0.1	232.5
Other Asian countries	1,292,295	1,173,471	2,172	116,652	2.2	2,908,497	2,569,047	3,947	335,503	2.6	125.1
Oceania	89,664	74,940	812	13,848	0.2	589,357	547,619	20,566	21,172	0.5	557.8
Australia	62,453	50,075	704	11,674	0.1	534,162	499,319	17,877	16,966	0.5	755.3
New Zealand and other Oceanian territories	27,147	24,865	108	2,174	0.0	55,195	48,300	2,689	4,206	0.0	103.3
Not specified	19,860	13,435	0	6,425	0.0	62,144	48,694	0	13,450	0.1	212.9

EXPLANATORY NOTES

Arrivals and nights spent at hotels, similar establishments, tourist campsites and short stay accommodation establishments	<p>Data on arrivals and nights spent at hotels, similar establishments and tourist campsites (NACE Rev. 2, 55.1 & 55.3) are collected from a monthly census survey. Each establishment fills in a questionnaire, for every month that it is in operation. It is mandatory for all hotels, similar establishments and tourist campsites to participate in the survey.</p> <p>Data on the arrivals and nights spent in short-stay accommodation establishments (NACE Rev.2, 55.2), until reference year 2019, were collected through a sample survey. Specifically for reference year 2020 and 2021, due to the conditions formed by the Coronavirus disease (COVID-19), data were collected from the total of short-stay accommodation establishments in operation, for each month.</p>
Legal frame	The survey is conducted pursuant to Regulation (EE) 692/2011 of the European Parliament and of the Council.
Reference unit	Data refer to all establishments (hotels, similar establishments and tourist campsites) that are registered in the Hellenic Chamber of Hotels, while for short-stay accommodation establishments (NACE Rev. 2, 55.2), data derive from the Statistical Register of short-stay accommodation establishments (rooms for rent) of ELSTAT, which is regularly updated by data of the Ministry of Tourism.
Reference period	2022 (Final data).
Coverage	The survey results refer to 100% of the total of the available bed-places.
Geographical classification	The geographical classification is based on <i>Nomenclature of Territorial Units for Statistics</i> .



Definitions	<p>Resident: Every person, regardless of citizenship, that has resided in Greece for at least a year, or has arrived in Greece with the intention to reside in the country for at least 1 year.</p> <p>Non-resident: Every person, regardless of citizenship, that is not considered to be resident.</p> <p>Arrivals: The arrivals at the establishments are calculated for every person separately. The data refer to the total number of persons and not to the total number of rooms that were occupied. Only the persons that had at least one overnight stay at the establishment are counted.</p> <p>Nights spent: The nights spent are calculated for every person separately. The data refer to the total number of nights spent by every person and not to the total number of nights spent in every room.</p> <p>Occupancy of bed-places: The monthly occupancy of bed-places is calculated on the basis of the number of the bed-places, as reported by each establishment. The rate refers to the occupancy that was accomplished, as compared with the maximum occupancy that is expected according to the available bed-places.</p> <p>The occupancy of the period is the result of the average occupancy rates of every month of the period, weighted by the bed-places that were in operation for each month.</p>
--------------------	--

Methodology	For hotels, similar establishments and tourist campsites (NACE Rev. 2, 55.1 & 55.3) data is collected through a census survey, which conducted on a monthly basis. Data is compiled through the collection and processing of the relevant data submitted, via a specific questionnaire, by hotels, similar establishments and tourist campsites for each month
--------------------	--

of operation. The questionnaires are mostly submitted electronically, via ELSTAT's electronic application "Xenios Zeus" or, alternatively, for establishments that this is not possible, in paper form.

The survey is based on the Statistical Register of hotels, similar establishments and tourist campsites, which is updated during the year, so that data refer to the actual number of accommodation establishments and campsites that are in operation.

Non-response to the survey is addressed as follows:

1. Regular reminders are sent out to the establishments that have not responded to the survey, for submitting data.
2. For the low percentage of establishments, which despite the reminders have not responded to the survey, supplementary administrative data are used and statistical methods are applied for grossing-up of the results to the total of establishments.

For short stay accommodation establishments (NACE Rev. 2, 55.2), until reference year 2019, data were collected through a sample survey with reference unit the short-stay accommodation establishment, through special electronic or paper questionnaire, that were submitted for each operational month. The data refer to arrivals and nights spent of residents and non-residents on a monthly basis by country of residence of the guests.

The survey design (estimation of the sample size, selection of the sample units) was based on ELSTAT's Statistical Register of short-stay accommodation establishments, that is regularly updated by the according register of the Ministry of Tourism. For the survey design, the single stratified sampling method was applied. The stratification criteria of the short-stay accommodation establishments are: the Prefecture where the establishment is located, the class category of the establishment, the Degree of Urbanization (densely, intermediate and thinly populated area) of the Local Administrative Unit where the establishment is located and the size class of the establishment (based on the number of bedrooms).

Data collection during the pandemic period of coronavirus disease (COVID-19)

Since 2020, for the compilation of final data of arrivals and nights spent in hotels, similar establishments and tourist campsites, both data collected by the survey and administrative data sources were used. Specifically,

- a. the establishments of the Register of hotels and tourist campsites, were identified on the basis of administrative data for each reference period.
- b. the survey was conducted on the afore-mentioned establishments
- c. for the low percentage of accommodation establishments that were in operation but did not respond to the survey, statistical methods were used for addressing non-response by grossing-up the collected data to the 100% of the total of the available bed-places.

Especially for short stay accommodation establishments (NACE Rev.2, 55.2), for the compilation of data of arrivals and nights spent, both data collected by the survey and administrative data sources were used. In specific:

- a. the establishments in operation for each reference month, were identified on the basis of administrative data
- b. the survey was conducted on the short-stay accommodation establishments
- c. for the percentage of the accommodation establishments that were in operation but despite the reminders, did not respond to the survey, statistical methods were used for addressing nonresponse by grossing-up the collected data to the 100% of the total of the establishments. For this purpose, the target population was stratified by the following stratification criteria: Prefecture that the establishment is located, Degree of Urbanization (densely, intermediate and thinly populated areas), coastal or non-coastal areas, class of the establishment (1 key, 2 keys, 3 or 4 keys and rest of establishments) and size of the establishments based on the number of rooms (0-5 rooms, 6-9 rooms, 10-16 rooms, 17 rooms and over).

It is noted that during reference years 2020 and 2021, not all establishments were in operation, due to the measures against the Covid-19 pandemic. Moreover, a small number of establishments were in operation for special purposes such as the accommodation of people in quarantine, public servants that were transferred for special reasons, etc. In such cases arrivals and nights spent were not recorded, as they are not in the scope of the survey (Regulation EU 692/2011).

- References** More information at a more detailed geographical level of the survey results on hotels, similar establishments and tourist campsites is available on the website of ELSTAT at: <http://www.statistics.gr/en/statistics/-/publication/STO12/>