



**HELLENIC REPUBLIC
HELLENIC STATISTICAL AUTHORITY**

Piraeus, 27 October 2022

PRESS RELEASE

BUSINESS DEMOGRAPHY, 2020 (Provisional data)

The Hellenic Statistical Authority (ELSTAT) with the present Press Release, announces data on business demography in Greece and specifically on active enterprises, births of enterprises, deaths of enterprises and high growth enterprises for the year 2020.

Business demography statistics provide highly policy-relevant information on the contribution of newly born enterprises and of high-growth enterprises to the economy, as well as on the impact of enterprise deaths. For each business demographic event, employment variables are available in order to quantify its importance and depict its impact in the context of the labour market.

More specifically, ELSTAT announces:

- The number and total employment of active enterprises, enterprise births and enterprise deaths, by section of economic activity of the Statistical Classification of Economic Activities (NACE Rev. 2), for the reference years 2019 and 2020.
- The number and total employment of active enterprises, enterprise births and enterprise deaths, by section of economic activity of the Statistical Classification of Economic Activities (NACE Rev. 2) and by Employees' Size Class, for the reference year 2020.
- The number of active enterprises, enterprise births and enterprise deaths, by section of economic activity of the Statistical Classification of Economic Activities (NACE Rev. 2) and by category of Legal Form of enterprise, for the reference year 2020.
- The number of high growth enterprises, by section of economic activity of the Statistical Classification of Economic Activities (NACE Rev. 2), for the reference years 2019 and 2020.

Information on methodological issues:

Business Statistics Division

Registers and Big Enterprises Section

Head of Section: Adamantia Georgostathi

Tel.: +30 213 135 2043

E-mail: a.georgostathi@statistics.gr

Information on data provision:

Tel.: +30 213 135 2022, 2308, 2310

E-mail: data.dissem@statistics.gr

Number and total employment of Active Enterprises, Births of Enterprises and Deaths of Enterprises, 2019 - 2020 (Tables 1 and 2)

The number of active enterprises, in 2020, amounted to 1,012,019, recording an increase of 2.8% in comparison with 2019, when the respective number was 984,001 active enterprises.

The number of enterprise births, in 2020, amounted to 47,103 recording a decrease of 0.7% in comparison with 2019, when the respective number was 47,418, while the number of enterprise deaths, in 2020, amounted to 22,456, recording a decrease of 23.2% in comparison with 2019, when the respective number was 29,238.

The total employment of active enterprises, in 2020, amounted to 3,918,376 employed persons, recording a decrease of 4.8% in comparison with 2019, when the respective number was 4,116,903 employed persons.

The total employment of enterprise births, in 2020, amounted to 97,548 employed persons, recording a decrease of 14.9% in comparison with 2019, when the respective number was 114,641 employed persons. The total employment of enterprise deaths, in 2020, amounted to 36,190 employed persons, recording a decrease of 31.2% in comparison with 2019, when the respective number was 52,614 employed persons.

1. ACTIVE ENTERPRISES

1.1. Sections of Economic Activity by Employees' Size Class of the enterprise (Table 3)

The sections of economic activity with the biggest number of active enterprises by Employees' Size Class are:

- **No Employees:** Wholesale and Retail Trade; Repair of Motor Vehicles and Motorcycles, with 141,437 active enterprises and 159,597 persons employed.
- **1-4 Employees:** Wholesale and Retail Trade; Repair of Motor Vehicles and Motorcycles, with 97,335 active enterprises and 243,690 persons employed.
- **5-9 Employees:** Accommodation and Food Service Activities, with 13,745 active enterprises and 105,400 persons employed.
- **10 Employees or more:** Accommodation and Food Service Activities, with 13,167 active enterprises and 325,378 persons employed.

1.2. Sections of Economic Activity by category of Legal Form of the enterprise (Table 5)

The sections of economic activity with the biggest number of active enterprises by category of Legal Form are:

- **Sole Proprietorships:** Wholesale and Retail Trade; Repair of Motor Vehicles and Motorcycles, with 188,115 active enterprises.
- **Limited Liability Enterprises:** Wholesale and Retail Trade; Repair of Motor Vehicles and Motorcycles, with 25,205 active enterprises.
- **Partnership Enterprises:** Wholesale and Retail Trade; Repair of Motor Vehicles and Motorcycles, with 45,866 active enterprises.

2. BIRTHS OF ENTERPRISES

2.1. Sections of Economic Activity by Employees' Size Class of the enterprise (Tables 3,4)

The sections of economic activity with the biggest number of enterprise births by Employees' Size Class are:

- **No Employees:** Professional, Scientific and Technical Activities, with 8,851 enterprise births and 9,357 persons employed.
- **1-4 Employees:** Wholesale and Retail Trade; Repair of Motor Vehicles and Motorcycles, with 2,846 enterprise births and 6,004 persons employed.
- **5-9 Employees:** Accommodation and Food Service Activities, with 694 enterprise births and 5,320 persons employed.
- **10 Employees or more:** Accommodation and Food Service Activities, with 405 enterprise births and 8,552 persons employed.

2.2. Sections of Economic Activity by category of Legal Form of the enterprise (Table 5)

The sections of economic activity with the biggest number of enterprise births by category of Legal Form are:

- **Sole Proprietorships:** Professional, Scientific and Technical Activities, with 8,140 enterprise births.
- **Limited Liability Enterprises:** Wholesale and Retail Trade; Repair of Motor Vehicles and Motorcycles, with 1,447 enterprise births.
- **Partnership Enterprises:** Wholesale and Retail Trade; Repair of Motor Vehicles and Motorcycles, with 1,799 enterprise births.

3. DEATHS OF ENTERPRISES

3.1. Sections of Economic Activity by Employees' Size Class of the enterprise (Tables 3,4)

The sections of economic activity with the biggest number of enterprise deaths by Employees' Size Class are:

- **No Employees:** Wholesale and Retail Trade; Repair of Motor Vehicles and Motorcycles, with 5,048 enterprise deaths and 5,656 persons employed.
- **1-4 Employees:** Wholesale and Retail Trade; Repair of Motor Vehicles and Motorcycles, with 1,403 enterprise deaths and 2,939 persons employed.
- **5-9 Employees:** Accommodation and Food Service Activities, with 190 enterprise deaths and 1,445 persons employed.
- **10 Employees or more:** Accommodation and Food Service Activities, with 81 enterprise deaths and 1,471 persons employed.

3.2. Sections of Economic Activity by category of Legal Form of the enterprise (Table 5)

The sections of economic activity with the biggest number of enterprise deaths by category of Legal Form are:

- **Sole Proprietorships:** Wholesale and Retail Trade; Repair of Motor Vehicles and Motorcycles, with 5,740 enterprise deaths.
- **Limited Liability Enterprises:** Wholesale and Retail Trade; Repair of Motor Vehicles and Motorcycles, with 78 enterprise deaths.
- **Partnership Enterprises:** Wholesale and Retail Trade; Repair of Motor Vehicles and Motorcycles, with 672 enterprise deaths.

4. NUMBER OF HIGH GROWTH ENTERPRISES MEASURED IN EMPLOYMENT (Table 6)

According to the applied statistical definition, high growth enterprises for 2020 are those that had at least 10 employees in 2017, and an average annualized growth in the number of employees bigger than 10 % per annum, during the three-year period 2017 - 2020.

The number of high growth enterprises in 2020 amounted to 4,773 enterprises recording a decrease of 34.6% in comparison with 2019, when the respective number was 7,300 enterprises. Increase in the number of high growth enterprises in 2020 in comparison with 2019 was recorded in section "Electricity, Gas, Steam and Air Conditioning Supply" (23.1%) and in section "Financial and Insurance Activities¹" (6.3%). The biggest decrease in the number of high growth enterprises in 2020 in comparison with 2019 was recorded in section "Accommodation and Food Service Activities" (53.5%) and in section "Administrative and Support Service Activities" (47.7%).

¹ In Section K: Financial and insurance activities, the activities of holding companies are excluded (NACE Rev.2 64.2)

Table 1: Number of Active enterprises, Births of enterprises and Deaths of enterprises, by economic activity (NACE Rev.2), 2019 - 2020 (provisional data)

ECONOMIC ACTIVITY		Number of Active enterprises			Number of Births of enterprises			Number of Deaths of enterprises		
NACE Rev.2 Code	Description	2019	2020	Change (%) 2020/2019	2019	2020	Change (%) 2020/2019	2019	2020	Change (%) 2020/2019
B	Mining and Quarrying	722	731	1.2	6	10	66.7	x	x	x
C	Manufacturing	65,224	66,167	1.4	2,160	2,217	2.6	1,592	1,220	-23.4
D	Electricity, Gas, Steam and Air Conditioning Supply	7,418	7,832	5.6	199	163	-18.1	x	x	x
E	Water Supply, Sewerage, Waste Management and Remediation Activities	2,254	2,310	2.5	79	79	0.0	50	28	-44.0
F	Construction	73,849	77,365	4.8	3,267	3,688	12.9	1,319	x	x
G	Wholesale and Retail Trade; Repair of Motor Vehicles and Motorcycles	256,276	259,186	1.1	10,522	9,886	-6.0	8,347	6,490	-22.2
H	Transportation and Storage	66,001	66,653	1.0	2,420	2,103	-13.1	1,806	1,558	-13.7
I	Accommodation and Food Service Activities	124,711	126,025	1.1	7,326	5,507	-24.8	5,292	3,948	-25.4
J	Information and Communication	20,200	21,986	8.8	1,501	2,215	47.6	729	430	-41.0
K	Financial and Insurance Activities	18,716	19,116	2.1	864	756	-12.5	546	380	-30.4
L	Real Estate Activities	13,169	14,485	10.0	946	844	-10.8	119	79	-33.6
M	Professional, Scientific and Technical Activities	152,747	159,602	4.5	8,116	9,544	17.6	4,199	2,893	-31.1
N	Administrative and Support Service Activities	24,913	26,567	6.6	1,919	1,795	-6.5	792	557	-29.7
P	Education	25,644	26,756	4.3	1,476	1,612	9.2	900	791	-12.1
Q	Human Health and Social Work Activities	60,984	63,070	3.4	2,800	3,300	17.9	1,714	x	x
R	Arts, Entertainment and Recreation	25,145	26,219	4.3	1,486	1,233	-17.0	756	x	x
S	Other Service Activities	46,028	47,949	4.2	2,331	2,151	-7.7	1,036	950	-8.3
Total		984,001	1,012,019	2.8	47,418	47,103	-0.7	29,238	22,456	-23.2

Notes: In Section K: Financial and insurance activities, the activities of holding companies are excluded (NACE Rev.2 64.2)

"x": The data are not disclosed for statistical confidentiality reasons regarding the protection of the identity of the reporting enterprises.

Table 2: Total employment of Active enterprises, Births of enterprises and Deaths of enterprises, by economic activity (NACE Rev.2), 2019-2020 (provisional data)

ECONOMIC ACTIVITY		Total persons employed in the population of								
		Active enterprises			Births of enterprises			Deaths of enterprises		
NACE Rev.2 Code	Description	2019	2020	Change (%) 2020/2019	2019	2020	Change (%) 2020/2019	2019	2020	Change (%) 2020/2019
B	Mining and Quarrying	8,363	7,503	-10.3	16	x	x	x	x	x
C	Manufacturing	416,286	406,984	-2.2	4,781	4,065	-15.0	2,758	1,835	-33.5
D	Electricity, Gas, Steam and Air Conditioning Supply	41,102	33,106	-19.5	312	203	-34.9	x	x	x
E	Water Supply, Sewerage, Waste Management and Remediation Activities	20,527	17,131	-16.5	151	x	x	94	78	-17.0
F	Construction	199,275	193,378	-3.0	6,595	6,037	-8.5	1,893	x	x
G	Wholesale and Retail Trade; Repair of Motor Vehicles and Motorcycles	880,592	851,992	-3.2	19,002	15,523	-18.3	12,428	9,509	-23.5
H	Transportation and Storage	210,576	205,592	-2.4	4,751	3,782	-20.4	2,389	1,946	-18.5
I	Accommodation and Food Service Activities	729,339	617,884	-15.3	37,730	23,652	-37.3	14,269	8,911	-37.5
J	Information and Communication	108,241	108,929	0.6	2,220	2,868	29.2	1,150	521	-54.7
K	Financial and Insurance Activities	91,291	95,225	4.3	1,285	x	x	683	451	-34.0
L	Real Estate Activities	32,731	30,357	-7.3	1,453	x	x	167	115	-31.1
M	Professional, Scientific and Technical Activities	328,085	291,253	-11.2	10,233	11,090	8.4	7,056	3,673	-47.9
N	Administrative and Support Service Activities	177,440	161,838	-8.8	5,324	4,295	-19.3	1,209	802	-33.7
P	Education	360,539	365,243	1.3	4,851	4,273	-11.9	2,795	2,018	-27.8
Q	Human Health and Social Work Activities	282,946	300,176	6.1	7,607	5,168	-32.1	2,175	x	x
R	Arts, Entertainment and Recreation	90,824	91,682	0.9	3,838	2,829	-26.3	1,550	x	x
S	Other Service Activities	138,746	140,103	1.0	4,492	4,094	-8.9	1,684	1,699	0.9
Total		4,116,903	3,918,376	-4.8	114,641	97,548	-14.9	52,614	36,190	-31.2

Notes: In Section K: Financial and insurance activities, the activities of holding companies are excluded (NACE Rev.2 64.2)

"x": The data are not disclosed for statistical confidentiality reasons regarding the protection of the identity of the reporting enterprises.

Table 3: Number of Active enterprises, Births of enterprises and Deaths of enterprises, by economic activity (NACE Rev.2) and Employees' Size Class of enterprise, 2020 (provisional data)

ECONOMIC ACTIVITY		EMPLOYEES' SIZE CLASS														
		Number of Active enterprises					Number of Births of enterprises					Number of Deaths of enterprises				
NACE Rev.2 Code	Description	0	1-4	5-9	≥10	Total	0	1-4	5-9	≥10	Total	0	1-4	5-9	≥10	Total
B	Mining and Quarrying	325	259	49	98	731	x	x	0	0	10	x	x	0	0	x
C	Manufacturing	31,758	23,835	4,609	5,965	66,167	1,532	625	x	x	2,217	922	282	x	x	1,220
D	Electricity, Gas, Steam and Air Conditioning Supply	5,776	1,867	98	91	7,832	134	x	x	0	163	x	x	0	0	x
E	Water Supply, Sewerage, Waste Management and Remediation Activities	1,113	825	148	224	2,310	x	x	0	0	79	x	7	x	x	28
F	Construction	53,177	19,566	2,501	2,121	77,365	3,035	574	x	x	3,688	695	x	x	x	x
G	Wholesale and Retail Trade; Repair of Motor Vehicles and Motorcycles	141,437	97,335	11,898	8,516	259,186	6,879	2,846	126	35	9,886	5,048	1,403	31	8	6,490
H	Transportation and Storage	44,420	18,242	1,930	2,061	66,653	1,527	509	41	26	2,103	1,300	249	x	x	1,558
I	Accommodation and Food Service Activities	52,503	46,610	13,745	13,167	126,025	1,813	2,595	694	405	5,507	2,478	1,199	190	81	3,948
J	Information and Communication	14,264	5,715	893	1,114	21,986	1,967	227	10	11	2,215	394	x	0	x	430
K	Financial and Insurance Activities	13,862	4,385	451	418	19,116	679	69	x	x	756	348	x	0	x	380
L	Real Estate Activities	7,788	6,005	387	305	14,485	673	164	x	x	844	66	x	0	x	79
M	Professional, Scientific and Technical Activities	126,470	29,065	2,302	1,765	159,602	8,851	653	25	15	9,544	2,679	207	x	x	2,893
N	Administrative and Support Service Activities	14,496	9,183	1,287	1,601	26,567	1,400	341	24	30	1,795	455	91	6	5	557
P	Education	11,485	8,503	2,961	3,807	26,756	1,178	x	88	x	1,612	536	x	55	x	791
Q	Human Health and Social Work Activities	41,685	17,009	2,164	2,212	63,070	2,805	361	98	36	3,300	1,425	x	x	x	x
R	Arts, Entertainment and Recreation	12,143	11,016	1,773	1,287	26,219	811	x	x	x	1,233	430	197	29	x	x
S	Other Service Activities	22,676	21,736	2,144	1,393	47,949	1,343	724	x	x	2,151	639	289	x	x	950
Total		595,378	321,156	49,340	46,145	1,012,019	34,687	10,354	1,317	745	47,103	17,465	4,463	374	154	22,456

Notes: In Section K: Financial and insurance activities, the activities of holding companies are excluded (NACE Rev.2 64.2)

"x": The data are not disclosed for statistical confidentiality reasons regarding the protection of the identity of the reporting enterprises.

Table 4: Total employment of Active enterprises, Births of enterprises and Deaths of enterprises, by economic activity (NACE Rev.2) and Employees' Size Class of enterprise, 2020 (provisional data)

ECONOMIC ACTIVITY		EMPLOYEES' SIZE CLASS														
		Total persons employed in the population of														
		Number of Active enterprises					Number of Births of enterprises					Number of Deaths of enterprises				
NACE Rev.2 Code	Description	0	1-4	5-9	≥10	Total	0	1-4	5-9	≥10	Total	0	1-4	5-9	≥10	Total
B	Mining and Quarrying	417	628	347	6,111	7,503	x	x	0	0	x	x	x	0	0	x
C	Manufacturing	36,375	62,111	34,320	274,178	406,984	1,703	1,371	x	x	4,065	1,044	646	x	x	1,835
D	Electricity, Gas, Steam and Air Conditioning Supply	8,833	3,578	665	20,030	33,106	156	x	x	0	203	x	x	0	0	x
E	Water Supply, Sewerage, Waste Management and Remediation Activities	1,277	1,760	1,073	13,021	17,131	x	x	0	0	x	x	12	x	x	78
F	Construction	64,952	46,156	18,082	64,188	193,378	3,928	1,208	x	x	6,037	816	x	x	x	x
G	Wholesale and Retail Trade; Repair of Motor Vehicles and Motorcycles	159,597	243,690	87,631	361,074	851,992	7,930	6,004	886	703	15,523	5,656	2,939	x	x	9,509
H	Transportation and Storage	47,966	37,912	13,644	106,070	205,592	1,673	931	299	879	3,782	1,374	407	x	x	1,946
I	Accommodation and Food Service Activities	58,823	128,283	105,400	325,378	617,884	2,237	7,543	5,320	8,552	23,652	2,733	3,262	1,445	1,471	8,911
J	Information and Communication	15,734	12,257	6,263	74,675	108,929	2,170	347	70	281	2,868	424	x	0	x	521
K	Financial and Insurance Activities	14,338	10,100	3,117	67,670	95,225	722	130	x	x	x	353	x	0	x	451
L	Real Estate Activities	9,339	9,470	2,607	8,941	30,357	792	263	x	x	x	74	x	0	x	115
M	Professional, Scientific and Technical Activities	133,947	63,242	16,216	77,848	291,253	9,357	1,157	170	406	11,090	2,789	393	x	x	3,673
N	Administrative and Support Service Activities	15,907	20,880	9,249	115,802	161,838	1,525	653	171	1,946	4,295	468	183	45	106	802
P	Education	11,820	22,189	22,488	308,746	365,243	1,201	x	675	x	4,273	555	x	x	506	2,018
Q	Human Health and Social Work Activities	42,052	43,250	15,915	198,959	300,176	2,861	952	755	600	5,168	1,431	x	x	x	x
R	Arts, Entertainment and Recreation	12,705	25,822	12,623	40,532	91,682	864	x	x	x	2,829	451	542	232	x	x
S	Other Service Activities	23,567	47,012	15,091	54,433	140,103	1,411	1,870	x	x	4,094	670	739	x	x	1,699
Total		657,649	778,340	364,731	2,117,656	3,918,376	38,602	24,230	9,856	24,860	97,548	18,904	10,471	2,851	3,964	36,190

Notes: In Section K: Financial and insurance activities, the activities of holding companies are excluded (NACE Rev.2 64.2)

"x": The data are not disclosed for statistical confidentiality reasons regarding the protection of the identity of the reporting enterprises

Table 5: Number of Active enterprises, Births of enterprises and Deaths of enterprises, by economic activity (NACE Rev.2) and category of Legal Form of enterprise, 2020 (provisional data)

ECONOMIC ACTIVITY		LEGAL FORM											
		Number of Active enterprises				Number of Births of enterprises				Number of Deaths of enterprises			
NACE Rev.2 Code	Description	Sole Proprietorship	Limited Liability	Partnership	Total	Sole Proprietorship	Limited Liability	Partnership	Total	Sole Proprietorship	Limited Liability	Partnership	Total
B	Mining and Quarrying	233	277	221	731	x	x	x	10	x	0	x	x
C	Manufacturing	41,745	10,136	14,286	66,167	1,580	319	318	2,217	1,032	x	x	1,220
D	Electricity, Gas, Steam and Air Conditioning Supply	1,818	2,337	3,677	7,832	44	87	32	163	x	x	x	x
E	Water Supply, Sewerage, Waste Management and Remediation Activities	1,085	748	477	2,310	x	x	x	79	x	x	x	28
F	Construction	57,745	6,554	13,066	77,365	x	x	556	3,688	x	x	120	x
G	Wholesale and Retail Trade; Repair of Motor Vehicles and Motorcycles	188,115	25,205	45,866	259,186	6,640	1,447	1,799	9,886	5,740	78	672	6,490
H	Transportation and Storage	53,421	6,331	6,901	66,653	1,554	313	236	2,103	1,435	29	94	1,558
I	Accommodation and Food Service Activities	96,129	11,518	18,378	126,025	3,731	601	1,175	5,507	3,566	32	350	3,948
J	Information and Communication	13,576	5,053	3,357	21,986	1,607	385	223	2,215	387	x	x	430
K	Financial and Insurance Activities	15,339	2,204	1,573	19,116	591	99	66	756	362	9	9	380
L	Real Estate Activities	3,817	5,225	5,443	14,485	390	293	161	844	59	x	x	79
M	Professional, Scientific and Technical Activities	140,674	9,777	9,151	159,602	8,140	796	608	9,544	2,748	38	107	2,893
N	Administrative and Support Service Activities	16,265	4,496	5,806	26,567	1,310	252	233	1,795	507	22	28	557
P	Education	18,353	4,784	3,619	26,756	x	x	136	1,612	704	x	x	791
Q	Human Health and Social Work Activities	56,721	3,370	2,979	63,070	2,907	186	207	3,300	x	x	31	x
R	Arts, Entertainment and Recreation	15,943	3,225	7,051	26,219	x	x	204	1,233	x	x	x	x
S	Other Service Activities	30,578	5,675	11,696	47,949	1,767	124	260	2,151	851	12	87	950
Total		751,557	106,915	153,547	1,012,019	35,298	5,571	6,234	47,103	20,268	298	1,890	22,456

Notes: In Section K: Financial and insurance activities, the activities of holding companies are excluded (NACE Rev.2 64.2)

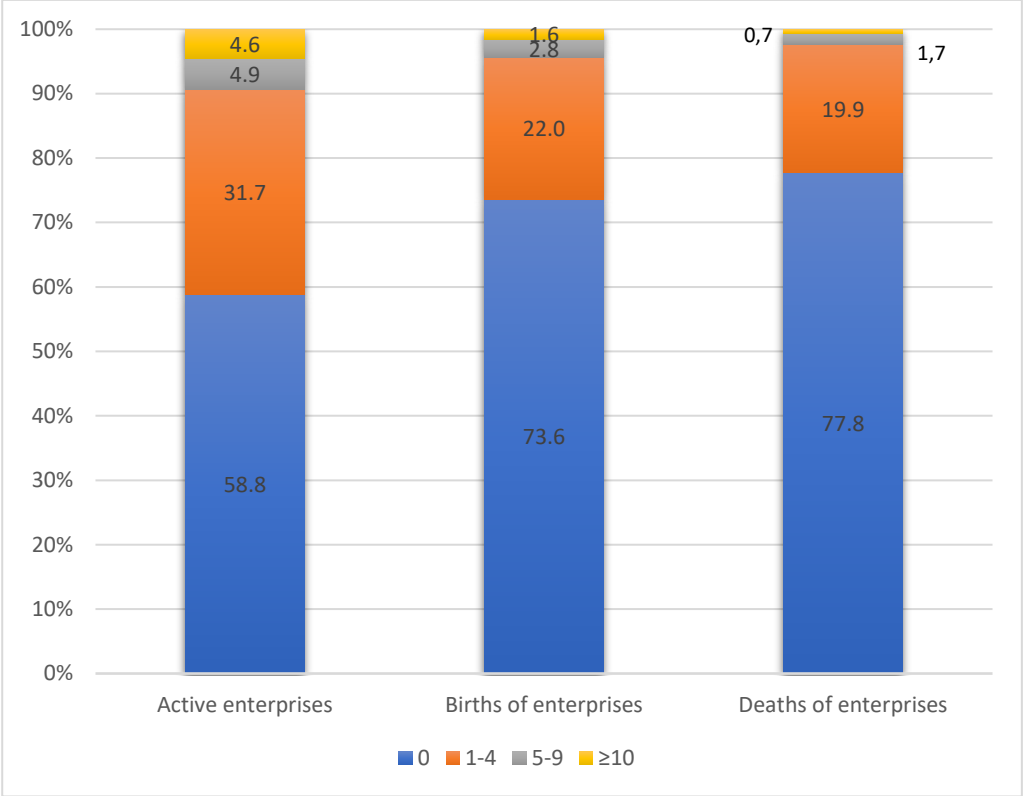
"x": The data are not disclosed for statistical confidentiality reasons regarding the protection of the identity of the reporting enterprises.

Table 6: Number of High Growth Enterprises measured in employment by economic activity (NACE Rev.2), 2019 - 2020 (provisional data)

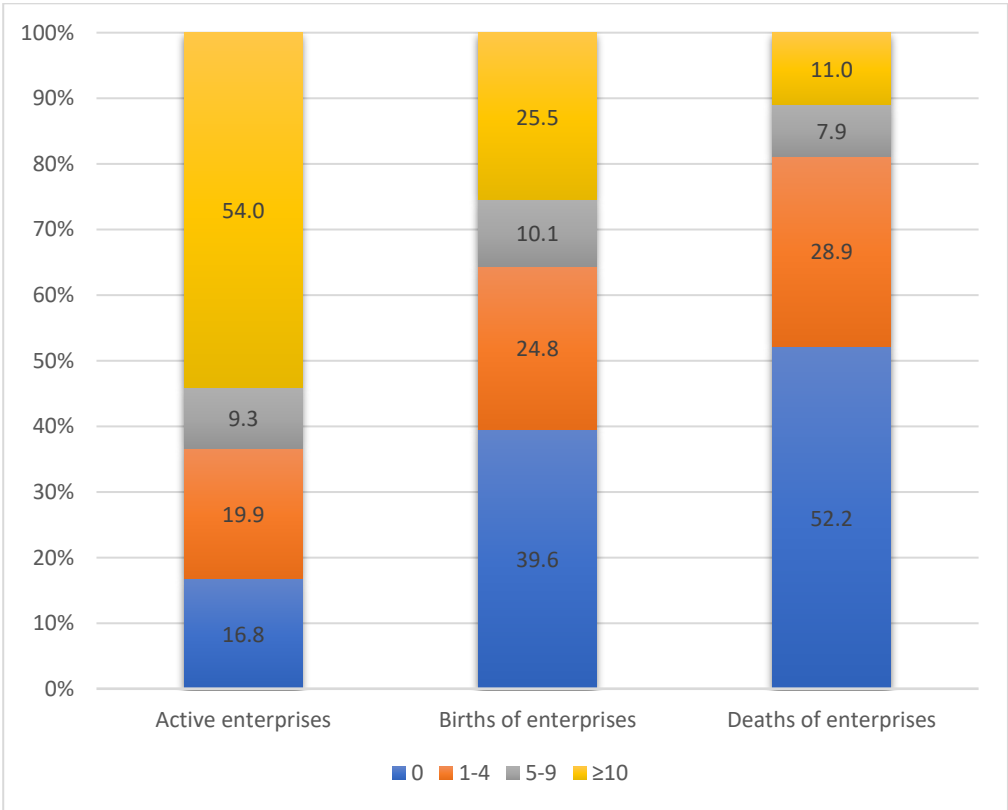
ECONOMIC ACTIVITY		HIGH GROWTH ENTERPRISES MEASURED IN EMPLOYMENT		
NACE Rev. 2 Code	Description	2019	2020	Change % 2020/2019
B	Mining and Quarrying	19	11	-42.1
C	Manufacturing	1,121	901	-19.6
D	Electricity, Gas, Steam and Air Conditioning Supply	13	16	23.1
E	Water Supply, Sewerage, Waste Management and Remediation Activities	75	45	-40
F	Construction	317	309	-2.5
G	Wholesale and Retail Trade; Repair of Motor Vehicles and Motorcycles	1,476	1,127	-23.6
H	Transportation and Storage	380	312	-17.9
I	Accommodation and Food Service Activities	2,785	1,296	-53.5
J	Information and Communication	212	177	-16.5
K	Financial and Insurance Activities	48	51	6.3
L	Real Estate Activities	65	39	-40
M	Professional, Scientific and Technical Activities	392	280	-28.6
N	Administrative and Support Service Activities	390	204	-47.7
S95	Repair of computers and personal and household goods	7	5	-28.6
Total		7,300	4,773	-34.6

Notes: In section S: Other Service Activities the data refer only to the division S95: Repair of computers and personal and household goods.

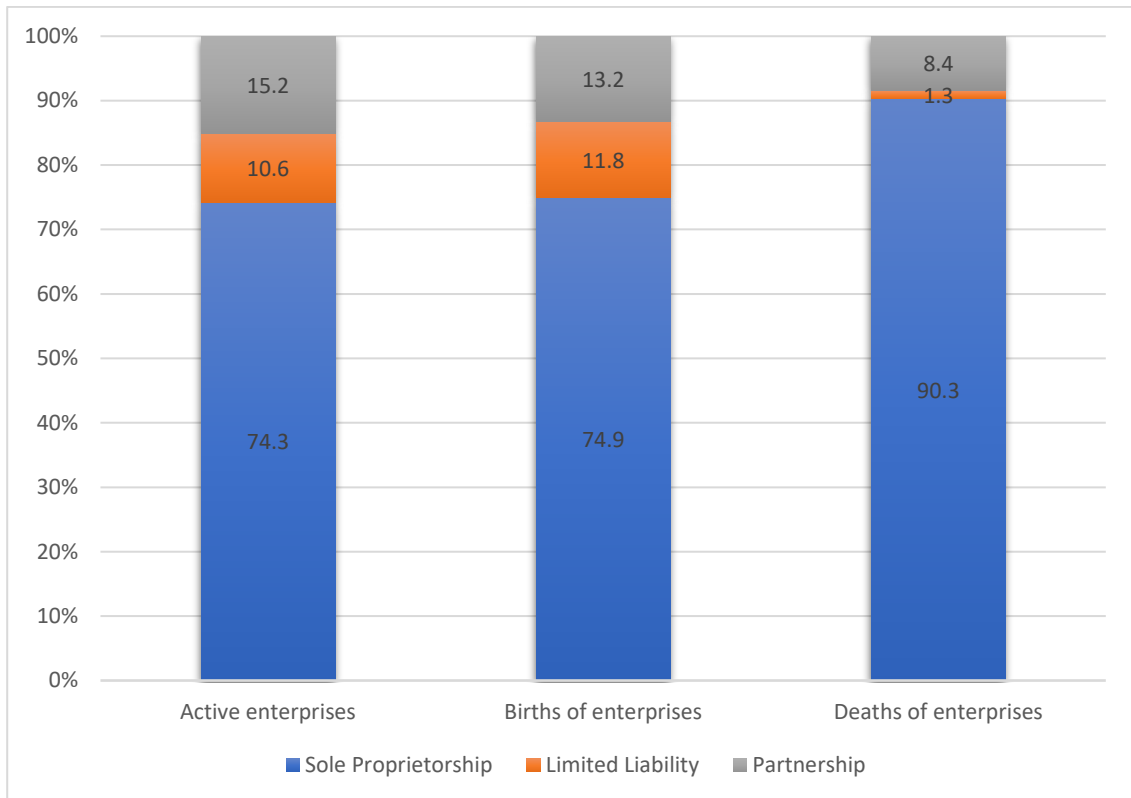
Graph 1: Percentage distribution (%) of the number of Active enterprises, Births of enterprises and Deaths of enterprises, by Employees' Size Class, 2020



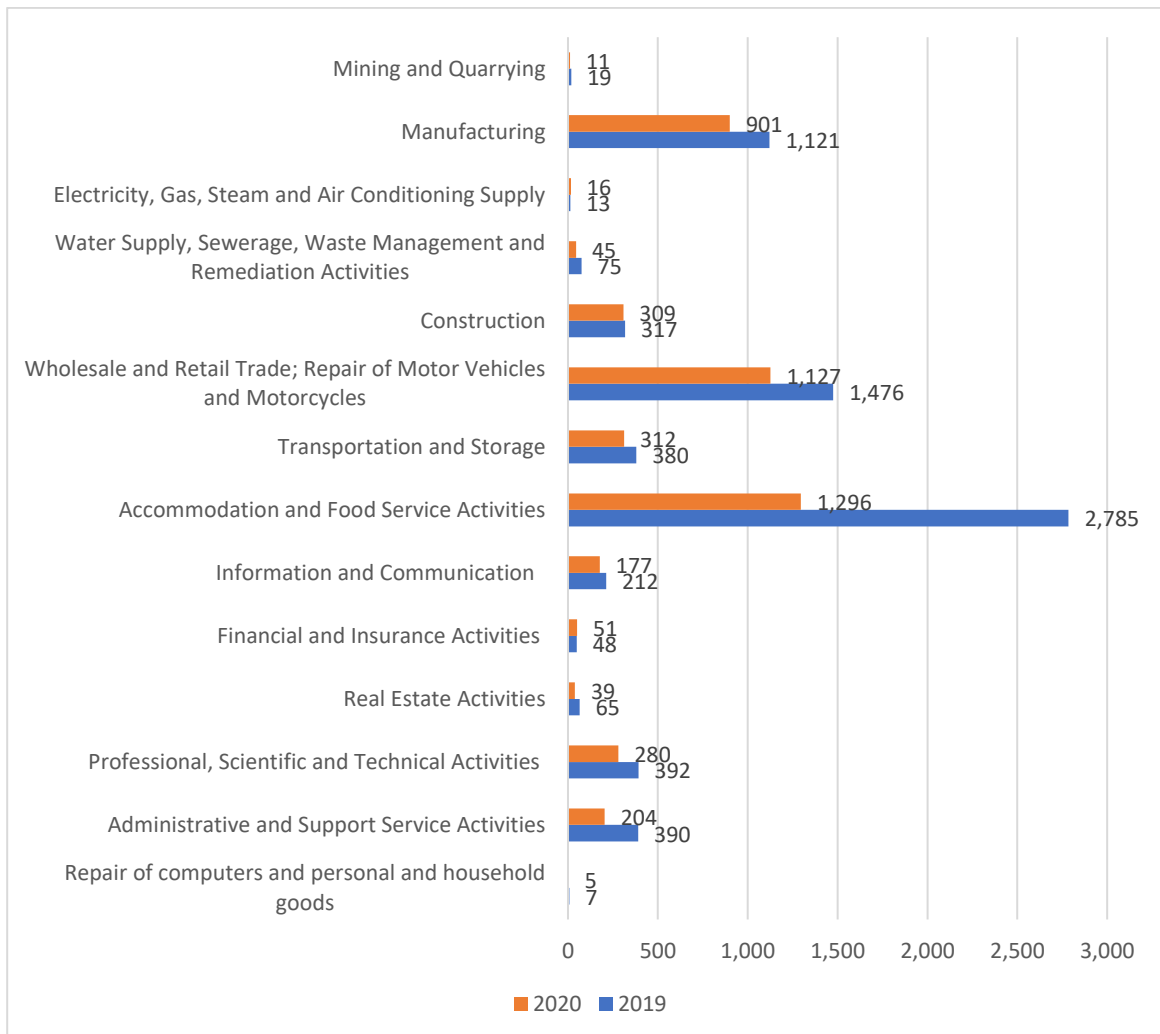
Graph 2: Percentage distribution (%) of the total employment of Active enterprises, Births of enterprises and Deaths of enterprises, by Employees' Size Class, 2020



Graph 3: Percentage distribution (%) of the number of Active enterprises, Births of enterprises and Deaths of enterprises, by category of Legal Form of enterprise, 2020



Graph 4: Number of High Growth Enterprises measured in employment by economic activity (NACE Rev.2), 2019-2020.



METHODOLOGICAL NOTES

General Information	<p>The statistical data on business demography are compiled pursuant to the European Regulation concerning Structural Business Statistics (Regulation (EC) 295/2008 of the European Parliament and of the Council of 11 March 2008) and the new European Regulation on Business Statistics, which entered into force on the 1st of January 2021 (Regulation (EU) 2019/2152 of the European Parliament and of the Council of 27 November 2019) and refer to active enterprises, births of enterprises and deaths of enterprises, which are defined as follows:</p> <p>Active enterprises: The number of enterprises that have turnover or employment at any time during the reference year.</p> <p>Births of enterprises: An enterprise birth occurs when an enterprise (for example a company) starts from scratch and begins operations, amounting to the creation of a combination of production factors with the restriction that no other enterprises are involved in the event. Enterprises created solely as a result of e.g. restructuring, merger or break-up are not considered as enterprise births.</p> <p>Deaths of enterprises: An enterprise death is the termination of an enterprise, amounting to the dissolution of a combination of production factors with the restriction that no other enterprises are involved in the event. Enterprises closed solely as a result of e.g. restructuring, merger or break-up are not considered as enterprise death.</p> <p>Moreover, business demography statistics include data for high growth enterprises, measured in employment. The enterprises having at least 10 employees in year t-3, with average annualized growth in number of employees greater than 10 % per annum, over a three-year period (t-3 to t) are characterized as high growth enterprises.</p> <p>The data are compiled by economic activity of the enterprises (NACE Rev.2), legal form and employees' size class in order to reveal specific demographic patterns.</p> <p>The economic activities covered by business demography are NACE Rev.2 sections B to N, excluding group 64.2 "Management activities of holding companies" and P to S of NACE Rev. 2. The analysis for the high growth enterprises covers all NACE Sections B to N and P to R and division S95.</p> <p>The categories of legal form or enterprises are the following:</p> <ul style="list-style-type: none"> • Sole Proprietorships: Personally owned enterprises with no limit to personal liability. • Limited Liability Enterprises: Private or publicly quoted joint stock companies with limited liability for those owning shares. • Partnership Enterprises: Personally owned limited and unlimited liability partnerships. Included are also other forms such as co-operatives, associations etc. <p>The number of persons employed and the number of employees are defined as follows:</p> <p>Number of persons employed: The total number of persons who work in the enterprise, including the working proprietors, partners and unpaid family members, as well as persons who work outside the enterprise, belong to it and are paid by it.</p> <p>Number of employees: The number of persons who work for an employer, have a contract of employment and receive compensation in the form of wages, salaries, fees, gratuities, piecework pay or remuneration in kind.</p>
Purpose	The purpose of business demography statistics is to provide highly policy-relevant information on the contribution of newly born enterprises and of high growth enterprises to the economy, as well as on the impact of enterprise deaths.
Legal framework	Business demography statistics are compiled in accordance with Regulation (EC) 295/2008 of the European Parliament and of the Council of 11 March 2008 , concerning Structural Business Statistics, the implementing Regulation (EC) 251/2009 of 11 March 2009 , the Commission implementing Regulation (EU) 439/2014, of 29 April 2014 and of Regulation (EU) 2019/2152 of the European Parliament and of the Council of 27 November 2019 .
Compilation methodology	The compilation of statistical data for business demography is based on the analysis and processing of data obtained from the Statistical Business Register of ELSTAT .
Statistical classifications	As regards the economic activities, the European statistical classification of economic activities NACE Rev.2 is used.
Reference period	Year 2020
Statistical unit	The statistical unit is the legal unit (distinct Tax Identification Numbers - TINs).
References	Analytical tables are available on ELSTAT's website (www.statistics.gr), at the following link: https://www.statistics.gr/en/statistics/-/publication/SBR05/- .