



HELLENIC REPUBLIC



HELLENIC STATISTICAL AUTHORITY

Piraeus, 25 May 2018

PRESS RELEASE

HOSPITAL CENSUS, 2016

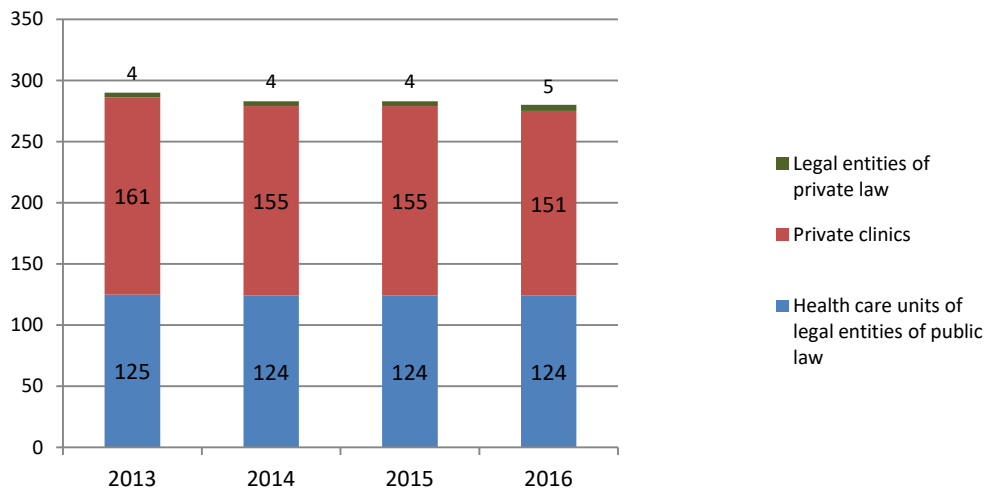
The Hellenic Statistical Authority (ELSTAT) announces the data of the annual exhaustive survey on hospitals for the year 2016. According to the results of the Hospital Census the number of hospitals in Greece was reduced in 2016 compared with 2015, amounting to 280 from 283 in 2015.

On the basis of the available data on the legal status of hospitals, most of the hospitals (54.3%) are private during 2016 (Table 1, Graph 1).

Table 1. Hospitals by legal status and category, 2013-2016

Year	Legal entities of private law	Health care units of legal entities of public law	Private clinics	Total	General	Specialized	Combined specialties
2013	4	125	161	290	178	103	9
2014	4	124	155	283	176	101	6
2015	4	124	155	283	172	103	8
2016	5	124	151	280	173	96	11

Graph 1. Hospitals by legal status, 2013-2016

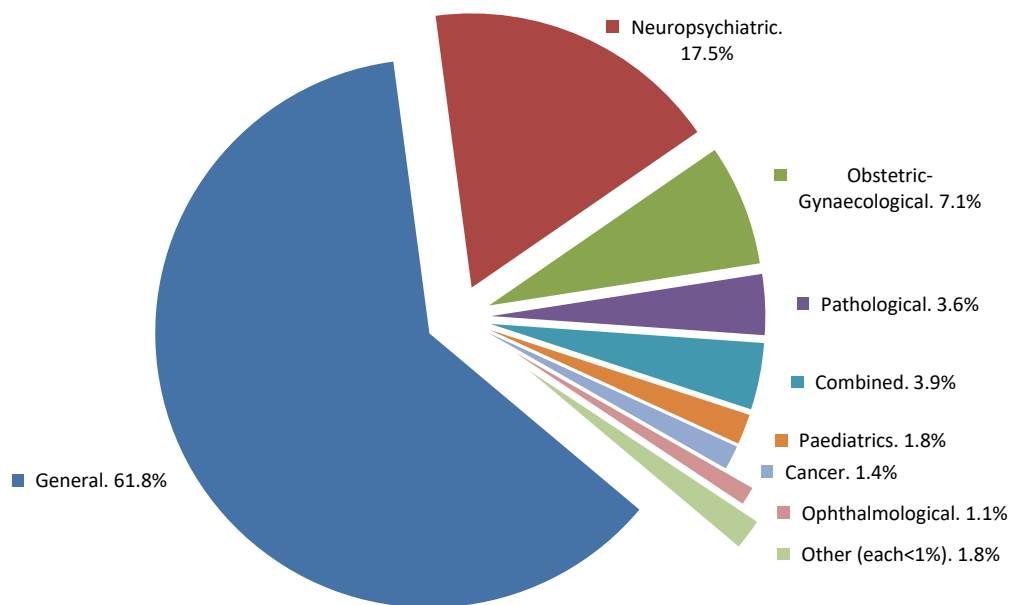


Information

Division of Social Statistics
 Section of Health and Social Security and Protection Statistics
 Alexandra Zografou
 Tel: +30 213 135 2746 Fax: +30 213 135 2397
 E-mail: social_stat@statistics.gr

The number of hospitals during the fourth-year period (2013-2016) decreased by 3.4%. Before the year 2014, there have been changes as regards the legal status of the health care units of Legal Entities of Public Law (abolishment of the hospitals run by the Social Insurance Institute – IKA ETAM, by virtue of the Law 3918/2011) and the integration of Psychiatric Hospitals in Public Hospitals, as psychiatric departments. As regards hospital specialties, in 2016, the 61.8% of hospitals are general hospitals, while 34.3% are specialized hospitals. The majority of specialized hospitals are Neuropsychiatric (17.5%) and Obstetric-Gynaecological hospitals (7.1%). As third come the ones of mixed specialties (3.9%) (Table 1, Graph 2).

Graph 2. Hospitals by specialty, 2016

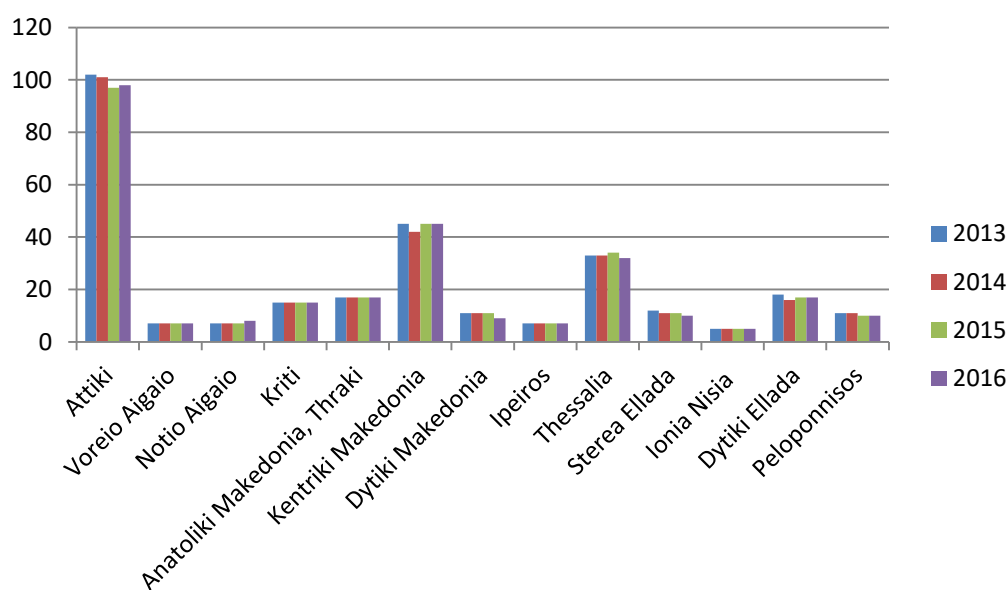


As regards the percentage distribution of hospitals into the 13 Regions of Greece for the year 2016, it is observed that most of the hospitals (34.3% of the total number of hospitals all over Greece) are located in Attiki, followed by Kentriki Makedonia (15.9%) and Thessalia (12.0%). The smallest percentage is recorded in the Regions of Ionia Nisia, Voreio Aigaio, Notio Aigaio and Ipeiros with the four aforementioned Regions accounting for 9.7% of the total number of hospitals in Greece (Table 2, Graph 3).

Table 2. Hospitals by Region (NUTS 2), 2013-2016

Regions	2013	2014	2015	2016	Percentage distribution of 2016
Total	290	283	283	280	100%
Attiki	102	101	97	98	34.3%
Voreio Aigaio	7	7	7	7	2.5%
Notio Aigaio	7	7	7	8	2.5%
Kriti	15	15	15	15	5.3%
Anatoliki Makedonia, Thraki	17	17	17	17	6.0%
Kentriki Makedonia	45	42	45	45	15.9%
Dytiki Makedonia	11	11	11	9	3.9%
Ipeiros	7	7	7	7	2.5%
Thessalia	33	33	34	32	12.0%
Stereia Ellada	12	11	11	10	3.9%
Ionia Nisia	5	5	5	5	1.8%
Dytiki Ellada	18	16	17	17	6.0%
Peloponnisos	11	11	10	10	3.5%

Graph 3. Distribution of hospitals by Region (NUTS 2), 2013-2016



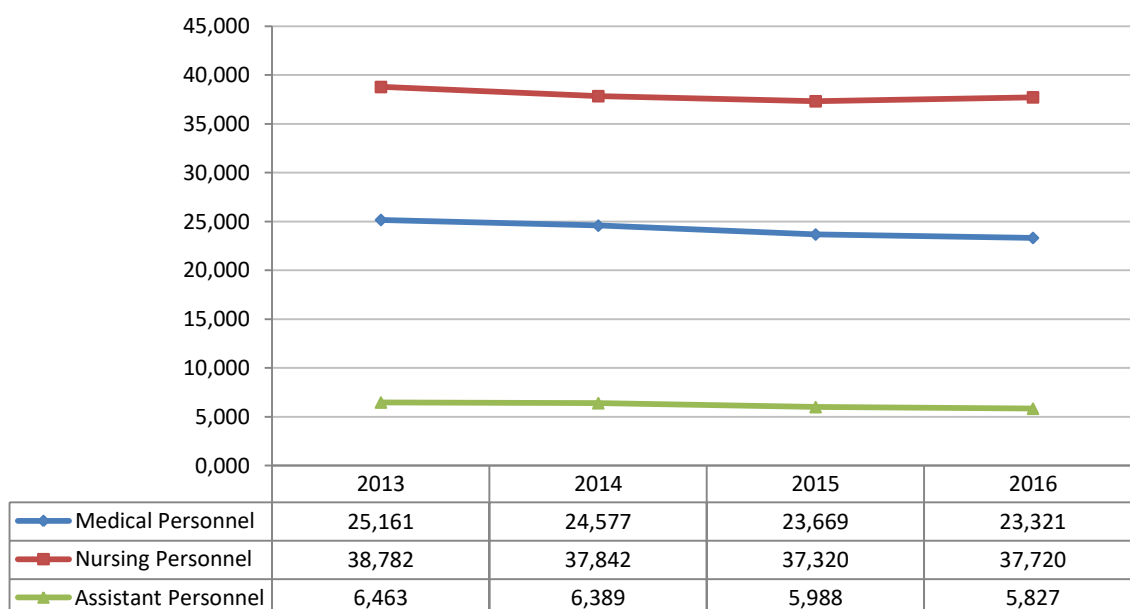
The number of available in-patient hospitalization beds followed a downward trend during the period 2013-2016 and specifically were reduced by 1,237 beds (2.7%) while the number of day-care beds, during the same period, recorded an increase by 592 beds (19,6%). From the comparison between the two last years a decrease by 150 beds in 2016 in relation to 2015 (4%) is observed (Table 3).

Table 3. Number of hospital beds by type, 2013-2016

Year	In-patient hospitalization beds	Day-care beds	Total beds
2013	46,510	3,022	49,532
2014	46,160	3,548	49,708
2015	45,945	3,764	49,709
2016	45,273	3,614	48,887

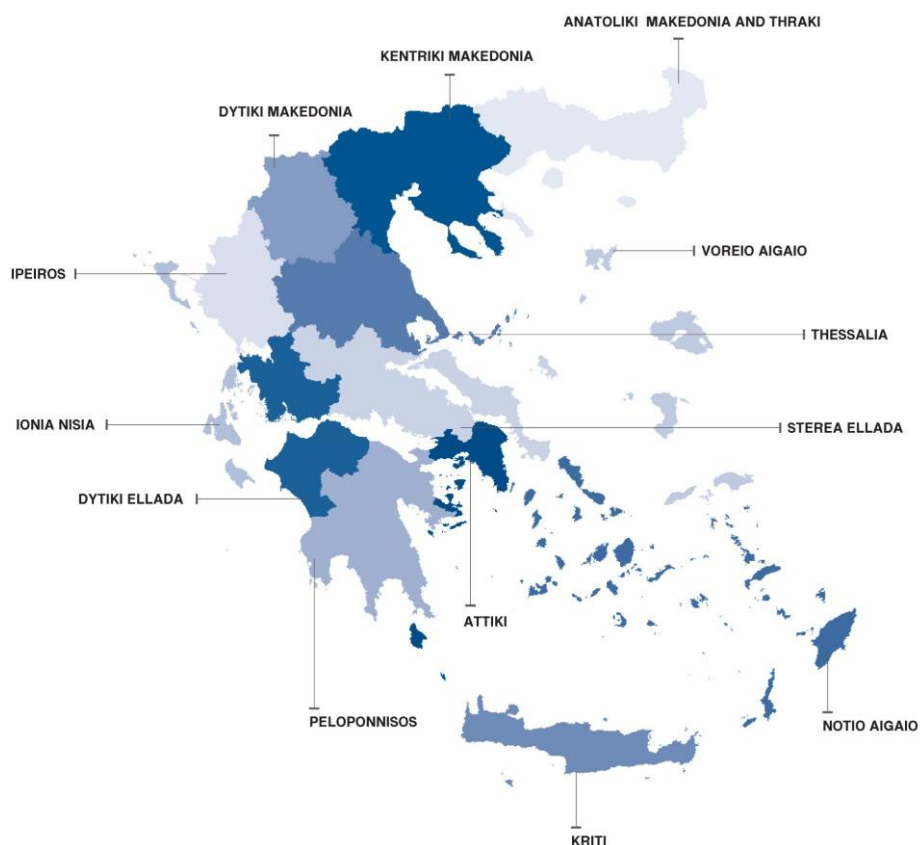
During the fourth year period (2013-2016), a decrease is observed in the medical personnel employed in the hospitals of the country total by 7.3% (Graph 4). A similar trend is also recorded for the assistant personnel of hospitals (i.e. ancillary paramedical staff) whereas the nursing personnel increased in the year 2016 by 1.1%.

Graph 4. Hospital personnel by personnel category, 2013-2016



EXPLANATORY NOTES

Hospital Census	The Hospital Census is conducted on a yearly basis. The data are presented at the level of Greece total and at the level of NUTS 2 Regions, aiming at covering national needs in statistical information.
Reference period	The data refer to the hospitals and clinics on the 31th of December of the reference year.
Coverage	The survey covers all the hospitals of the country. The NUTS0/NUTS2 codes are defined according to Commission Regulation (EU) No 1319/2013 of 9 December 2013 amending annexes to Regulation (EC) No 1059/2003 of the European Parliament and of the Council on the establishment of a common classification of territorial units for statistics (NUTS) (OJ L 342, 18.12.2013)



Time coverage	The survey has been conducted since 1992.
Definition of basic variables	<p>Bed capacity. Bed capacity is distinguished in: the Legal Bed Capacity (on the basis of the Organization of the Hospital or the operation license of the clinic) and the Available Beds which are the number of beds available for hospitalization. There are in-patient hospitalization beds and day-care beds. In addition, the beds are presented by specialty department of the hospital, namely Pathology, Surgery, Psychiatric etc. or trans-specialty.</p> <p>Medical personnel by specialty. The medical specialties of the personnel are as follows : Hematologists, Radiologists, Allergists, General Pathologists, Dermatologists, Venereologists, Occupational Health specialists, Cardiologists, Social Medicine, Obstetricians-Gynecologists, Biopathologists (former Microbiologists), Neurologists, Dentists, Orthopedics, Urologists, Ophthalmologists, Physicians, Pediatricians, Language Pathologists, Pulmonologists, Surgeons of general surgery, Pediatric surgeons, Psychiatrists, Otolaryngologists, Internists and Physicians with no specialty.</p>

Methodology	The data are collected by the Health and Social Security and Protection Statistics Section of ELSTAT from the hospitals and clinics all over Greece. Data derive, on a census basis, from the local units which fill in a specially designed questionnaire collecting data on the
--------------------	---

hospital characteristics, (beds, medical and non-medical personnel, medical equipment, etc.). No international classification system is applied.

The reference basis of the exhaustive survey is the Hospital Register of ELSTAT. The Register is updated on an annual basis with data coming from administrative sources and the survey with any changes occurred (creation of new units, abolishment of units, etc). Furthermore, in case a private unit is idle (e.g. on account of renovation, provisional withdrawal of operation license, etc) this unit is not included in the total number of hospitals.

References

The data of the survey are made available concomitantly to all interested parties through the tables which are posted on the website of ELSTAT at the link *Statistics>Population and Social Conditions> Health>Health Care>Hospitals and local health centers*. Equal access of users to data is governed by the European Statistics Code of Practice with respect to professional independence, and in an objective, professional and transparent way, in which all users are treated equally. Users who want to have more detailed data, or data that are not available on the website can submit to ELSTAT a request at the following e-mail address: data.dissem@statistics.gr