

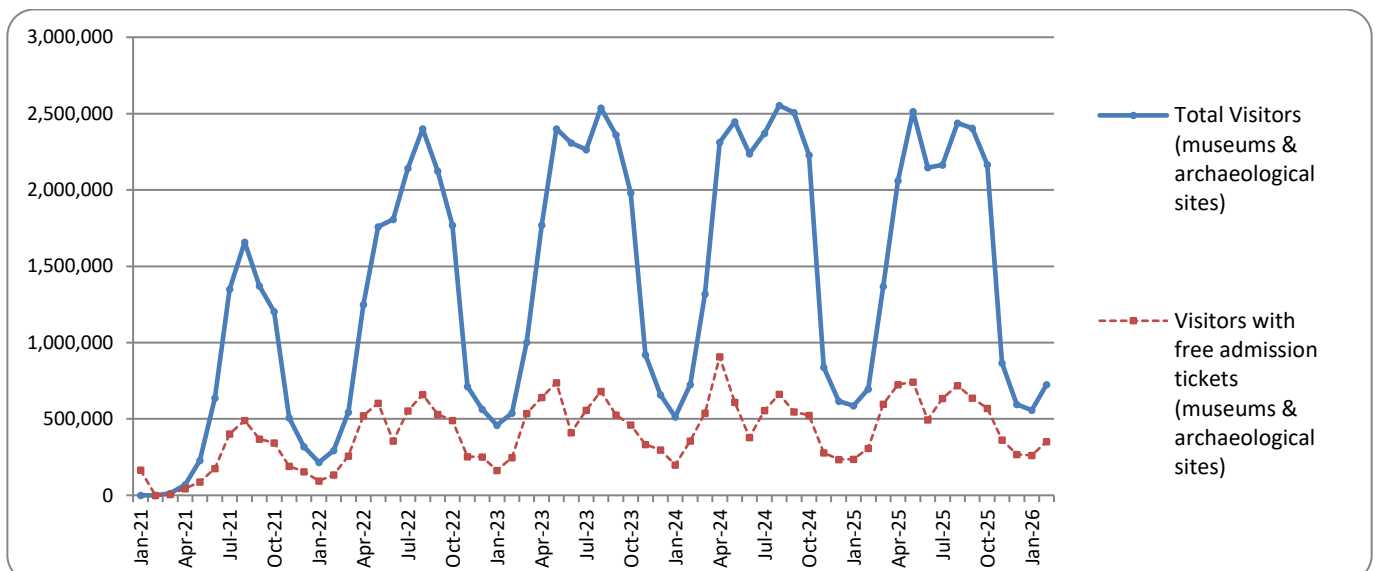


SURVEY ON MUSEUMS AND ARCHAEOLOGICAL SITES ATTENDANCE FEBRUARY 2026

The Hellenic Statistical Authority (ELSTAT) announces the results of the *Survey on Museums and Archaeological Sites Attendance* for February 2026. More specifically:

- During February 2026 compared with the corresponding month of 2025, museums recorded an increase of 8.4% in the number of visitors, of 16.3% in the number of free admission visitors and of 56.8% in their receipts (Table 1).
- As regards archaeological sites, in February 2026 compared with the corresponding month of 2025, an increase of 1.3% was recorded in the number of visitors, of 13.1% in the number of free admission visitors and of 140.6% in the corresponding receipts (Table 1).
- During the two-month period from January to February 2026, compared to the corresponding period of 2025, an increase of 5.8% was recorded in the number of visitors of museums, of 10.6% in the number of free admission visitors and of 59.1% in the relevant receipts (Table 2).
- As regards archaeological sites, during the two-month period from January to February 2026, compared to the corresponding period of 2025, a decrease of 3.9% was recorded in the number of visitors, while an increase of 14.8% was observed in the number of free admission visitors and of 124.0% in the relevant receipts (Table 2).

Graph 1: Visitors of Museums and Archaeological sites (January 2021 – February 2026)



Information on methodological issues:
Sectoral Statistics Division
Tourism and Culture Statistics Section
Head of Section: Eleni Papadopoulou
Tel: +30 213 135 2168
e-mail: e.papadopoulou@statistics.gr

Information for data provision:
Tel. +30 213 135 2022, 2308, 2310
e-mail: data.dissem@statistics.gr

**TABLE 1: VISITORS OF MUSEUMS AND ARCHAEOLOGICAL SITES - TOTAL RECEIPTS
(FEBRUARY 2025 & FEBRUARY 2026)**

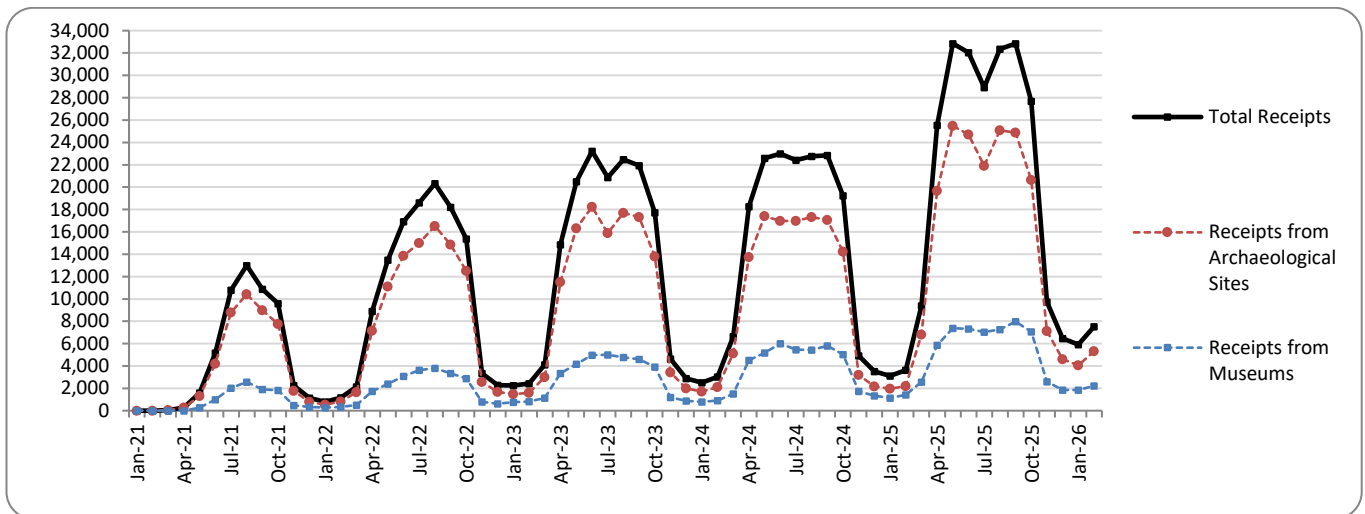
I. NUMBER OF VISITORS			
Museums and Archaeological sites	2025	2026	Change 2026/2025
Total number of visitors (A+B)	695,846	725,432	4.3%
A. Museums (C+E)	286,220	310,399	8.4%
Acropolis Museum	91,305	104,308	14.2%
National Archaeological	37,276	41,850	12.3%
Ancient Olympia ⁽¹⁾	7,286	5,838	-19.9%
Palace of the Grand Master (Rhodes)	5,052	3,157	-37.5%
Heraklion Archaeological (Crete)	5,216	5,008	-4.0%
White Tower	6,622	13,734	107.4%
Delphi ⁽¹⁾	24,240	21,521	-11.2%
Other museums	109,223	114,983	5.3%
B. Archaeological Sites (D+F)	409,626	415,033	1.3%
Epidavros	22,689	22,634	-0.2%
The Acropolis of Mycenae & Atreus' Treasure	23,192	23,373	0.8%
The Acropolis of Athens	182,483	191,796	5.1%
Sounio	16,225	19,551	20.5%
The Acropolis of Lindos	2,802	1,517	-45.9%
Royal Tombs of Vergina	9,241	9,738	5.4%
Ancient Olympia ⁽¹⁾	5,486	3,809	-30.6%
Knossos (Crete)	7,447	6,723	-9.7%
Phaistos (Crete)	504	464	-7.9%
Ancient Korinthos	7,467	8,114	8.7%
Mystras	3,633	3,618	-0.4%
Delphi ⁽³⁾	9,443	9,645	2.1%
Other archaeological sites	119,014	114,051	-4.2%
II. VISITORS WHO PAID TICKET			
	2025	2026	Change 2026/2025
Total number of visitors who paid ticket (C+D)	387,781	372,430	-4.0%
C. Museums ⁽³⁾	143,937	144,884	0.7%
D. Archaeological sites	243,844	227,546	-6.7%
III. VISITORS WITH FREE ADMISSION TICKETS			
	2025	2026	Change 2026/2025
Total number of visitors with free admission ticket (E+F)	308,065	353,002	14.6%
E. Museums	142,283	165,515	16.3%
F. Archaeological sites	165,782	187,487	13.1%
IV. RECEIPTS (euros)			
	2025	2026	Change 2026/2025
Total Receipts (G+H)⁽²⁾	3,625,743	7,536,245	107.9%
G. Museums	1,415,384	2,218,764	56.8%
H. Archaeological sites	2,210,359	5,317,481	140.6%

⁽¹⁾ Since April 2024, it has been possible to purchase tickets online from the museums of Ancient Olympia and Delphi, with the possibility of visiting the corresponding archaeological site, without it being possible to distinguish between museum and archaeological site visits.

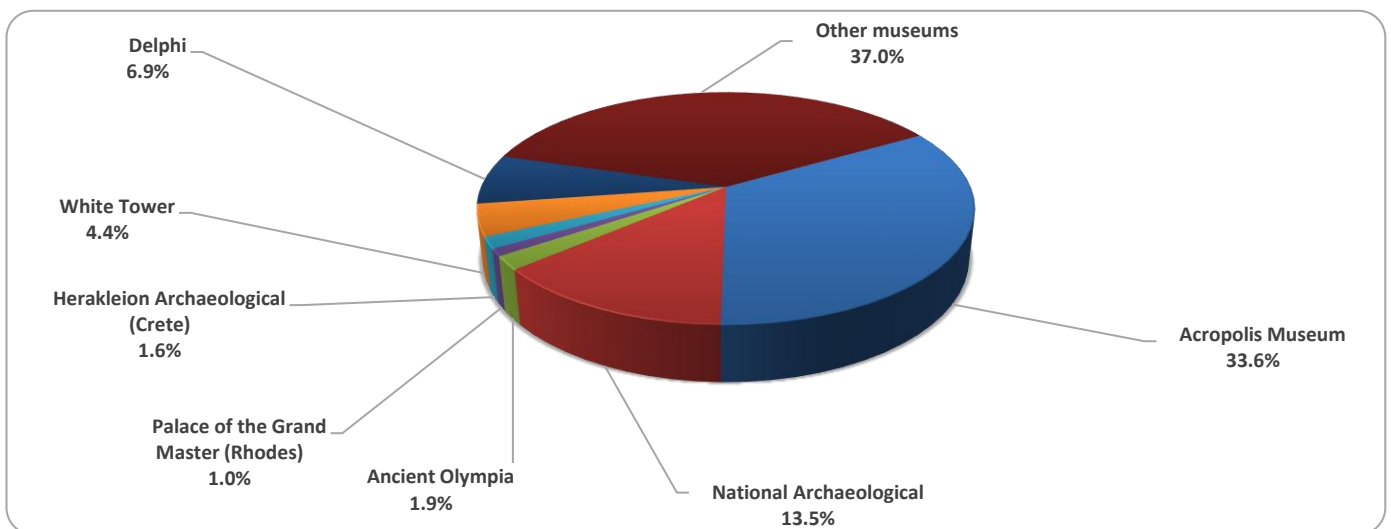
⁽²⁾ Pursuant to the provisions of Joint Ministerial Decision 117624 (Official Journal 1968/issue B/29-03-24), as of 01/04/2025 a new pricing policy to visits to museums and archaeological sites, is in force.

The following graphs depict the evolution of the receipts of Museums and Archaeological Sites (Graph 2), as well as the number of visitors by Museum (Graph 3) and by Archaeological Site (Graph 4).

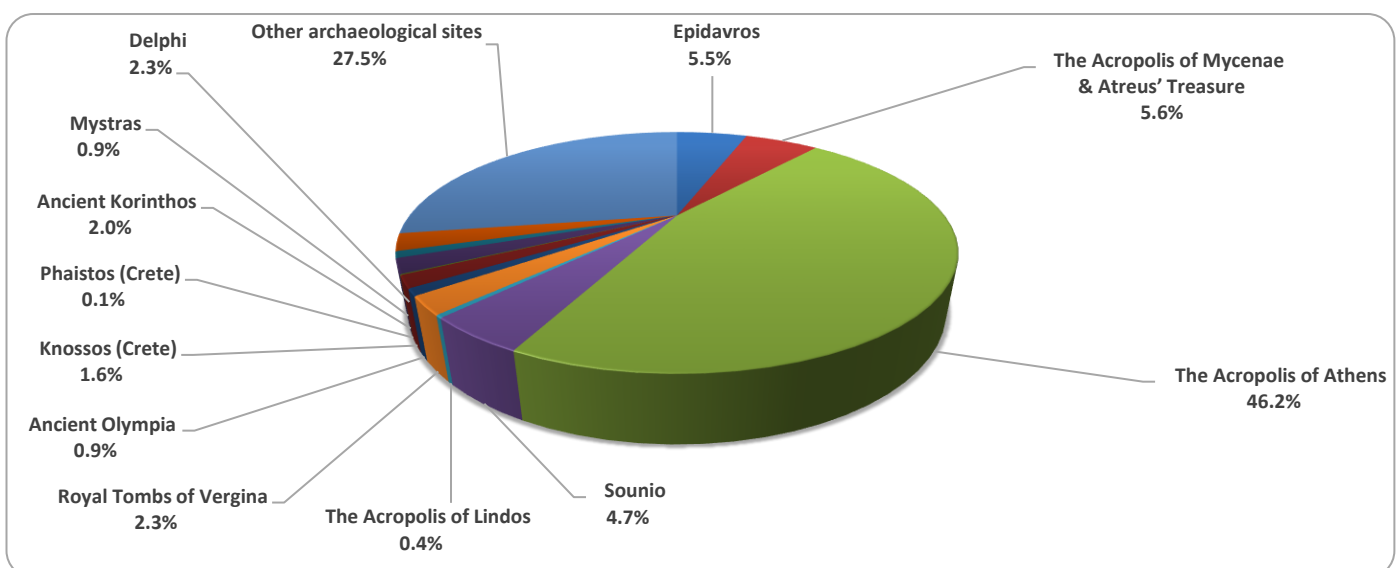
Graph 2: Receipts from Museums and Archaeological Sites (January 2021 – February 2026)
(in thousand euro)



Graph 3: Percentage distribution of visitors by Museum, February 2026



Graph 4: Percentage distribution of visitors by Archaeological site, February 2026



**TABLE 2: VISITORS OF MUSEUMS AND ARCHAEOLOGICAL SITES - TOTAL RECEIPTS
(2024, 2025, JANUARY -FEBRUARY 2025, 2026)**

I. VISITORS					
Museums and Archaeological sites	2024	2025	JANUARY -FEBRUARY		Change 2026/2025
			2025	2026	
Total number of visitors (A+B)	20,661,857	20,005,955	1,283,007	1,283,405	0.0%
A. Museums (C+E)	6,651,911	6,678,093	519,751	549,902	5.8%
Acropolis Museum	1,994,279	1,994,050	159,754	176,076	10.2%
National Archaeological	642,956	665,414	67,797	78,237	15.4%
Ancient Olympia ⁽¹⁾	286,519	301,459	11,109	9,567	-13.9%
Palace of the Grand Master (Rhodes) ⁽³⁾	370,138	311,678	6,232	6,684	7.3%
Herakleion Archaeological (Crete)	379,363	387,682	9,335	9,640	3.3%
White Tower	239,767	233,683	18,218	23,160	27.1%
Delphi ⁽¹⁾	445,188	463,159	41,079	37,384	-9.0%
Other museums	2,293,701	2,320,968	206,227	209,154	1.4%
B. Archaeological Sites (D+F)	14,009,946	13,327,862	763,256	733,503	-3.9%
Epidavros	548,971	525,113	39,281	37,268	-5.1%
The Acropolis of Mycenae & Atreus' Treasure	547,361	501,256	41,012	39,220	-4.4%
The Acropolis of Athens	4,557,693	4,609,113	344,574	349,472	1.4%
Sounio	421,556	382,650	33,095	33,193	0.3%
The Acropolis of Lindos	702,363	595,625	3,306	2,294	-30.6%
Royal Tombs of Vergina	244,013	188,487	18,711	17,177	-8.2%
Ancient Olympia ⁽¹⁾	301,987	276,674	9,324	6,741	-27.7%
Knossos (Crete)	1,010,006	977,299	13,201	11,862	-10.1%
Phaistos (Crete)	84,637	65,431	897	958	6.8%
Ancient Korinthos ⁽¹⁾	253,085	254,270	14,459	14,935	3.3%
Mystras	153,789	137,611	7,571	6,366	-15.9%
Delphi ⁽¹⁾	292,619	216,389	20,224	17,917	-11.4%
Other archaeological sites	4,891,866	4,597,944	217,601	196,100	-9.9%
II. VISITORS WHO PAID TICKET					
	2024	2025	JANUARY -FEBRUARY		Change
			2025	2026	2026/2025
Total number of visitors who paid ticket (C+D)	14,869,892	13,708,555	738,108	668,439	-9.4%
C. Museums ⁽³⁾	4,489,241	4,289,769	264,969	268,012	1.1%
D. Archaeological sites	10,380,651	9,418,786	473,139	400,427	-15.4%
III. VISITORS WITH FREE ADMISSION TICKETS					
	2024	2025	JANUARY -FEBRUARY		Change
			2025	2026	2025
Total number of visitors with free admission ticket (E+ F)	5,791,965	6,297,400	544,899	614,966	12.9%
E. Museums	2,162,670	2,388,324	254,782	281,890	10.6%
F. Archaeological sites	3,629,295	3,909,076	290,117	333,076	14.8%
IV. RECEIPTS (euros)					
	2024	2025	JANUARY -FEBRUARY		Change
			2025	2026	2026/2025
Total Receipts (G+H)⁽²⁾	171,680,632	244,557,074	6,740,331	13,442,430	99.4%
G. Museums ⁽³⁾	43,688,040	59,482,164	2,550,850	4,057,909	59.1%
H. Archaeological sites	127,992,592	185,074,910	4,189,481	9,384,521	124.0%

⁽¹⁾ Since April 2024, it has been possible to purchase tickets online from the museums of Ancient Olympia and Delphi, with the possibility of visiting the corresponding archaeological site, without it being possible to distinguish between museum and archaeological site visits

⁽²⁾ Pursuant to the provisions of Joint Ministerial Decision 117624 (Official Journal 1968/issue B/29-03-24), as of 01/04/2025 a new pricing policy to visits to museums and archaeological sites, is in force.

⁽³⁾ Updated administrative data for January 2025.

EXPLANATORY NOTES

Survey on Museums and Archaeological Sites Attendance	<p>The Survey on Museums and Archaeological Sites Attendance has been producing results since 1970. The survey collects data from the Hellenic Organization of Cultural Resources Development (HOCRED), supervised by the Ministry of Culture, on the number of visitors and the receipts from the tickets sold in the Museums and Archaeological sites of the country.</p> <p>The corresponding data for the Acropolis Museum is available from December 2009 onwards. Pursuant to the provisions of Joint Ministerial Decision 117624 (Official Journal 1968/issue B/29-03-24), as 01/04/2025 a new pricing policy shall apply to visits to museums and archaeological sites.</p>
Legal Framework	<p>The survey is conducted since 1970 on a regular basis and it produces results on a monthly and yearly basis, in compliance with the Joint Ministerial Decision 15189/B379/73.</p>
Reference Period	<p>01/02/2026 – 28/02/2026</p>
Methodology and Definitions	<p>The survey is conducted on a monthly basis from data mainly collected from the Hellenic Organization of Cultural Resources Development (HOCRED), supervised by the Ministry of Culture, on the number of visitors and the receipts from the tickets sold in the Museums and Archaeological sites of the Country. ELSTAT tabulates and presents the data for the whole of the Country, by month and by year.</p>
References	<p>More information on the Survey on Museums and Archaeological Sites Attendance and detailed time series are available on: http://www.statistics.gr/en/statistics/-/publication/SCI21/</p>