



PRESS RELEASE
EVOLUTION OF TURNOVER OF ENTERPRISES IN
RETAIL TRADE
MAY 2021

The Hellenic Statistical Authority (ELSTAT) with this sectoral publication, presents in detail the evolution of the sales/turnover of all classes of activity of the retail trade section. Retail trade is the basic business model of the modern consumer supply chain, through the resale of material goods or services and the promotion of products for profit.

Therefore, retail trade has always been an important productive tertiary sector of the Greek economy with a significant contribution to the Gross Domestic Product.

At the same time, and during the recent circumstances, the monitoring of the evolution of the size of the retail trade activity classes is important, given the direct and indirect effects due to the 2019 coronavirus disease (COVID-19) pandemic.

In addition, monitoring the aggregates of the retail trade, leads to conclusions on the evolution of consumption (in terms of volume, characteristics, preferences and substitution of products) of the Greek society, the citizens and the enterprises of the country.

This current publication is part of the sequel of the Press Releases published by ELSTAT ([link PR](#)) since April 2020, incorporating the most recent data on turnover from Administrative Sources for **May 2021**.

A corresponding publication has been scheduled and is released by ELSTAT on a monthly basis, throughout the whole period during which the regular monitoring of the turnover of the retail trade enterprises remains relevant and warranted.

In particular, ELSTAT announces a) data on a quarterly basis, on turnover for **all enterprises** classified in the activity classes of the retail trade divisions (45 and 47 of the NACE Rev.2 classification), b) turnover data on a monthly basis for **all enterprises obliged to double-entry accounting bookkeeping** classified in the activity classes of the retail trade divisions (45 and 47 of the NACE Rev.2 classification) and c) turnover data for the **five biggest enterprises**, for each of the 10 largest classes, in terms of 2018 turnover, of the retail trade divisions (45 and 47 of NACE Rev.2 classification).

Starting from the press release published in May 2021 (reference period March and 1st quarter 2021) an updated framework, for the determination of the enterprises classified in the classes of activity of the retail trade section, is used which occurs from the linking at micro-data level of administrative transactions files of the reference years 2019, 2020 and 2021 and of the final Statistical Business Register, of the reference year 2018, that provides a standardized set of data, harmonized with European classifications.

Information on methodological issues:

*Business Statistics Division
Registers and Big Enterprises Section
Head of Section: Adamantia Georgostathi
Tel.: +30 213 135 2043
e-mail: a.georgostathi@statistics.gr*

Information on data provision:

*Tel.: +30 213 135 2022, 2308, 2310
E-mail: data.dissem@statistics.gr*

a. All enterprises classified in the activity classes of the retail trade divisions obliged to double-entry accounting bookkeeping (Table 2)

For the enterprises in retail trade divisions obliged to double-entry accounting bookkeeping, for which data are available on a monthly basis, the turnover in May 2021 amounted to 2.65 billion euro, recording an increase of 18.3% in comparison with May 2020, when the respective turnover was 2.24 billion euro and a decrease of 3.7% in comparison with April 2021, when the respective turnover was 2.76 billion euro.

The activities that recorded the biggest increase in turnover in **May 2021** compared with May 2020 are:

- Retail sale of watches and jewelry in specialized stores, increase 123.7%.
- Sale of other motor vehicles, increase 103.1%.

The activities that recorded the biggest decrease in turnover in **May 2021** compared with May 2020 are:

- Retail sale of books in specialized stores, decrease 13.9%.
- Retail sale of electrical household appliances in specialized stores, decrease 12.3%.

Presentation of activities with biggest rates of change

The class of economic activity “**Retail sale of watches and jewelry in specialized stores**” which recorded the biggest increase in turnover in May 2021 compared with May 2020 includes the retail sales of watches and jewelry in specialized stores.

The class of economic activity “**Retail sale of books in specialized stores**” which recorded the biggest decrease in turnover in May 2021 compared with May 2020 includes the retail sale of books of all kinds.

The main characteristics of the enterprises that belong to these economic classes, with turnover data in May 2021 according to the final Statistical Business Register, with reference year 2018, are the following:

ECONOMIC ACTIVITY	Number of			
	Enterprises with turnover data in May 2021	Branches	Enterprises able to conduct electronic transactions (*)	Persons employed
Retail sale of watches and jewelry in specialized stores	137	470	17	1,392
Retail sale of books in specialized stores	64	176	8	724

(*) The number of enterprises able to conduct electronic transactions refers to the year 2019 and is derived from administrative files.

b. 5 biggest enterprises for the 10 largest classes of the retail trade divisions, based on the 2018 turnover (Tables 3, 4)

Based on the turnover data of the final Statistical Business Register 2018, the 10 largest classes of economic activity in the retail trade divisions are:

- Sale of cars and light motor vehicles
- Maintenance and repair of motor vehicles
- Wholesale trade of motor vehicle parts and accessories
- Retail sale in non-specialized stores with food, beverages or tobacco predominating
- Other retail sale in non-specialized stores
- Retail sale of automotive fuel in specialized stores
- Retail sale of hardware, paints and glass in specialized stores
- Retail sale of electrical household appliances in specialized stores
- Retail sale of clothing in specialized stores and
- Dispensing chemist in specialized stores

The activities that recorded the biggest increase in turnover in **May 2021** compared with May 2020 are:

- Maintenance and repair of motor vehicles, increase 106.5%.
- Sale of cars and light motor vehicles, increase 80.8%.
- Retail sale of clothing in specialized stores, increase 80.8%.

The activities that recorded decrease in turnover in **May 2021** compared with May 2020 are:

- Retail sale of electrical household appliances in specialized stores¹, decrease 18.6%.
- Retail sale in non-specialized stores with food, beverages or tobacco predominating, decrease 1.9%.

¹ For the activity "Retail sale of electrical household appliances in specialized stores" monthly data for May 2021 are available for less than the five (5) biggest enterprises.

Table 1: Turnover for the total of enterprises in all classes of the retail trade divisions (divisions 45 and 47 of NACE Rev.2 classification)

ECONOMIC ACTIVITY		TURNOVER (in thousand €)				Annual Rate of Change (%)		Quarterly Rate of Change (%)	
Code NACE Rev.2	Description	4 th Quarter 2019	1 st Quarter 2020	4 th Quarter 2020	1 st Quarter 2021	4 th Quarter 2020/2019	1 st Quarter 2021/2020	1 st Quarter 2020/ 4 th Quarter 2019	1 st Quarter 2021 / 4 th Quarter 2020
4511	Sale of cars and light motor vehicles	1,164,373	948,632	1,115,120	1,107,540	-4.2	16.8	-18.5	-0.7
4519	Sale of other motor vehicles	89,770	71,325	105,768	81,747	17.8	14.6	-20.5	-22.7
4520	Maintenance and repair of motor vehicles	321,047	249,578	296,829	258,616	-7.5	3.6	-22.3	-12.9
4531	Wholesale trade of motor vehicle parts and accessories	401,385	308,550	382,320	332,227	-4.7	7.7	-23.1	-13.1
4532	Retail trade of motor vehicle parts and accessories	117,927	85,001	104,902	85,199	-11.0	0.2	-27.9	-18.8
4540	Sale, maintenance and repair of motorcycles and related parts and accessories	109,289	89,679	102,161	97,444	-6.5	8.7	-17.9	-4.6
4711	Retail sale in non-specialized stores with food, beverages or tobacco predominating	3,764,101	3,497,172	4,106,933	3,453,175	9.1	-1.3	-7.1	-15.9
4719	Other retail sale in non-specialized stores	700,832	477,853	547,527	413,342	-21.9	-13.5	-31.8	-24.5
4721	Retail sale of fruit and vegetables in specialized stores	83,945	82,875	92,897	82,519	10.7	-0.4	-1.3	-11.2
4722	Retail sale of meat and meat products in specialized stores	297,384	231,635	303,632	221,870	2.1	-4.2	-22.1	-26.9
4723	Retail sale of fish, crustaceans and molluscs in specialized stores	44,077	45,611	44,428	51,233	0.8	12.3	3.5	15.3
4724	Retail sale of bread, cakes, flour confectionery and sugar confectionery in specialized stores	160,003	119,110	130,275	103,234	-18.6	-13.3	-25.6	-20.8
4725	Retail sale of beverages in specialized stores	37,344	24,670	32,123	21,734	-14.0	-11.9	-33.9	-32.3
4726	Retail sale of tobacco products in specialized stores	55,884	42,027	53,505	43,187	-4.3	2.8	-24.8	-19.3
4729	Other retail sale of food in specialized stores	120,632	103,828	117,863	104,443	-2.3	0.6	-13.9	-11.4
4730	Retail sale of automotive fuel in specialized stores	1,852,255	1,622,551	1,261,432	1,280,975	-31.9	-21.1	-12.4	1.5
4741	Retail sale of computers, peripheral units and software in specialized stores	228,630	149,079	270,147	193,761	18.2	30.0	-34.8	-28.3
4742	Retail sale of telecommunications equipment in specialized stores	155,634	94,173	156,453	100,768	0.5	7.0	-39.5	-35.6
4743	Retail sale of audio and video equipment in specialized stores	17,255	10,553	15,972	12,387	-7.4	17.4	-38.8	-22.4
4751	Retail sale of textiles in specialized stores	102,507	68,675	86,306	66,348	-15.8	-3.4	-33.0	-23.1
4752	Retail sale of hardware, paints and glass in specialized stores	348,223	220,909	314,907	221,286	-9.6	0.2	-36.6	-29.7
4753	Retail sale of carpets, rugs, wall and floor coverings in specialized stores	19,791	6,751	14,052	5,587	-29.0	-17.2	-65.9	-60.2
4754	Retail sale of electrical household appliances in specialized stores	406,529	247,855	319,090	235,580	-21.5	-5.0	-39.0	-26.2
4759	Retail sale of furniture, lighting equipment and other household articles in specialized stores	226,221	133,765	166,542	120,321	-26.4	-10.1	-40.9	-27.8

Table 1: Turnover for the total of enterprises in all classes of the retail trade divisions (divisions 45 and 47 of NACE Rev.2 classification) (continue)

ECONOMIC ACTIVITY		TURNOVER (in thousand €)				Annual Rate of Change (%)		Quarterly Rate of Change (%)	
Code NACE Rev.2	Description	4 th Quarter 2019	1 st Quarter 2020	4 th Quarter 2020	1 st Quarter 2021	4 th Quarter 2020/2019	1 st Quarter 2021/2020	1 st Quarter 2020/ 4 th Quarter 2019	1 st Quarter 2021/ 4 th Quarter 2020
4761	Retail sale of books in specialized stores	56,470	32,611	54,307	29,376	-3.8	-9.9	-42.3	-45.9
4762	Retail sale of newspapers and stationery in specialized stores	37,794	24,399	35,333	24,650	-6.5	1.0	-35.4	-30.2
4763	Retail sale of music and video recordings in specialized stores	2,157	1,350	1,492	1,120	-30.8	-17.0	-37.4	-24.9
4764	Retail sale of sporting equipment in specialized stores	137,561	99,942	113,688	104,410	-17.4	4.5	-27.3	-8.2
4765	Retail sale of games and toys in specialized stores	306,995	146,817	178,612	116,343	-41.8	-20.8	-52.2	-34.9
4771	Retail sale of clothing in specialized stores	813,883	462,776	392,255	321,159	-51.8	-30.6	-43.1	-18.1
4772	Retail sale of footwear and leather goods in specialized stores	139,345	75,211	70,230	50,277	-49.6	-33.2	-46.0	-28.4
4773	Dispensing chemist in specialized stores	983,727	984,329	1,029,160	916,224	4.6	-6.9	0.1	-11.0
4774	Retail sale of medical and orthopaedic goods in specialized stores	28,142	23,113	26,633	24,728	-5.4	7.0	-17.9	-7.2
4775	Retail sale of cosmetic and toilet articles in specialized stores	272,467	162,629	149,666	95,791	-45.1	-41.1	-40.3	-36.0
4776	Retail sale of flowers, plants, seeds, fertilisers, pet animals and pet food in specialized stores	121,797	114,256	130,367	129,307	7.0	13.2	-6.2	-0.8
4777	Retail sale of watches and jewellery in specialised stores	106,769	48,219	60,230	37,044	-43.6	-23.2	-54.8	-38.5
4778	Other retail sale of new goods in specialized stores	227,151	183,918	154,130	154,228	-32.1	-16.1	-19.0	0.1
4779	Retail sale of second-hand goods in stores	3,136	1,961	1,880	1,310	-40.1	-33.2	-37.5	-30.3
4781	Retail sale via stalls and markets of food, beverages and tobacco products	32,859	25,148	28,351	21,165	-13.7	-15.8	-23.5	-25.3
4782	Retail sale via stalls and markets of textiles, clothing and footwear	3,253	1,223	1,273	1,419	-60.9	16.0	-62.4	11.5
4789	Retail sale via stalls and markets of other goods	12,137	7,575	9,525	6,171	-21.5	-18.5	-37.6	-35.2
4791	Retail sale via mail order houses or via Internet	129,684	102,838	162,998	147,264	25.7	43.2	-20.7	-9.7
4799	Other retail sale not in stores, stalls or markets	40,088	35,990	30,963	30,213	-22.8	-16.1	-10.2	-2.4
Total		14,280,453	11,466,162	12,772,277	10,906,722	-10.6	-4.9	-19.7	-14.6

Notes:

- The table and the total include the turnover of the economic class "4531: Wholesale trade of motor vehicle parts and accessories", given that several enterprises classified in this class have as secondary activity retail trade and in order to present all classes of division "45: Wholesale and retail trade and repair of motor vehicles and motorcycles".
- Enterprises with single-entry accounting bookkeeping are obliged to submit data to tax authorities on a quarterly basis, while enterprises with double-entry accounting bookkeeping are obliged to submit data on a monthly basis. Therefore, for the total of enterprises, data are available only on a quarterly basis.

Table 2: Turnover for the total of enterprises obliged to double-entry accounting bookkeeping in all classes of the retail trade divisions (divisions 45 and 47 of NACE Rev.2 classification)

ECONOMIC ACTIVITY		TURNOVER (in thousand €)				Annual Rate of Change (%) 2021/2020		Monthly Rate of Change (%) May /April	
Code NACE Rev.2	Description	April 2020	May 2020	April 2021	May 2021	April	May	2020	2021
4511	Sale of cars and light motor vehicles	126,399	238,459	420,068	450,254	232.3	88.8	88.7	7.2
4519	Sale of other motor vehicles	9,336	17,224	31,386	34,977	236.2	103.1	84.5	11.4
4520	Maintenance and repair of motor vehicles	14,555	25,150	41,750	44,971	186.8	78.8	72.8	7.7
4531	Wholesale trade of motor vehicle parts and accessories	43,715	79,043	91,008	94,288	108.2	19.3	80.8	3.6
4532	Retail trade of motor vehicle parts and accessories	3,713	8,006	9,873	9,857	165.9	23.1	115.6	-0.2
4540	Sale, maintenance and repair of motorcycles and related parts and accessories	10,566	28,603	33,711	37,230	219.1	30.2	170.7	10.4
4711	Retail sale in non-specialized stores with food, beverages or tobacco predominating	1,165,228	1,039,410	1,202,728	1,021,541	3.2	-1.7	-10.8	-15.1
4719	Other retail sale in non-specialized stores	13,335	42,568	38,899	44,839	191.7	5.3	219.2	15.3
4721	Retail sale of fruit and vegetables in specialized stores	7,372	7,232	7,465	7,230	1.3	0.0	-1.9	-3.1
4722	Retail sale of meat and meat products in specialized stores	22,314	18,125	26,176	20,277	17.3	11.9	-18.8	-22.5
4723	Retail sale of fish, crustaceans and molluscs in specialized stores	2,947	2,107	3,463	2,397	17.5	13.8	-28.5	-30.8
4724	Retail sale of bread, cakes, flour confectionery and sugar confectionery in specialized stores	4,618	6,779	8,335	8,692	80.5	28.2	46.8	4.3
4725	Retail sale of beverages in specialized stores	1,697	2,379	2,717	3,648	60.1	53.3	40.2	34.3
4726	Retail sale of tobacco products in specialized stores	873	1,451	1,563	1,859	79.0	28.1	66.2	18.9
4729	Other retail sale of food in specialized stores	9,488	10,185	13,889	12,420	46.4	21.9	7.3	-10.6
4730	Retail sale of automotive fuel in specialized stores	103,029	144,346	180,863	193,965	75.5	34.4	40.1	7.2
4741	Retail sale of computers, peripheral units and software in specialized stores	36,564	49,840	78,374	***	114.3	***	36.3	***
4742	Retail sale of telecommunications equipment in specialized stores	14,516	21,766	22,826	21,849	57.2	0.4	49.9	-4.3
4743	Retail sale of audio and video equipment in specialized stores	1,335	2,267	2,845	2,699	113.1	19.1	69.8	-5.1
4751	Retail sale of textiles in specialized stores	1,365	2,334	2,450	2,462	79.5	5.5	71.0	0.5
4752	Retail sale of hardware, paints and glass in specialized stores	14,916	37,145	40,666	46,352	172.6	24.8	149.0	14.0
4753	Retail sale of carpets, rugs, wall and floor coverings in specialized stores	413	705	1,024	945	147.9	34.0	70.7	-7.7
4754	Retail sale of electrical household appliances in specialized stores	45,223	82,707	82,975	72,506	83.5	-12.3	82.9	-12.6
4759	Retail sale of furniture, lighting equipment and other household articles in specialized stores	10,855	31,599	31,647	40,472	191.5	28.1	191.1	27.9

Table 2: Turnover for the total of enterprises obliged to double-entry accounting bookkeeping in all classes of the retail trade divisions (divisions 45 and 47 of NACE Rev.2 classification) (continue)

ECONOMIC ACTIVITY		TURNOVER (in thousand €)				Annual Rate of Change (%) 2021/2020		Monthly Rate of Change (%) May /April	
Code NACE Rev.2	Description	April 2020	May 2020	April 2021	May 2021	April	May	2020	2021
4761	Retail sale of books in specialized stores	2,673	4,622	5,259	3,979	96.7	-13.9	72.9	-24.3
4762	Retail sale of newspapers and stationery in specialized stores	1,050	1,144	1,533	1,416	46.0	23.8	9.0	-7.6
4763	Retail sale of music and video recordings in specialized stores	8	30	33	42	312.5	40.0	275.0	27.3
4764	Retail sale of sporting equipment in specialized stores	11,228	32,672	34,406	39,064	206.4	19.6	191.0	13.5
4765	Retail sale of games and toys in specialized stores	9,877	65,924	62,302	65,322	530.8	-0.9	567.4	4.8
4771	Retail sale of clothing in specialized stores	20,131	92,121	101,844	153,772	405.9	66.9	357.6	51.0
4772	Retail sale of footwear and leather goods in specialized stores	4,420	15,203	16,216	20,932	266.9	37.7	244.0	29.1
4773	Dispensing chemist in specialized stores	29,425	29,706	34,810	34,450	18.3	16.0	1.0	-1.0
4774	Retail sale of medical and orthopaedic goods in specialized stores	2,240	2,474	3,488	3,579	55.7	44.7	10.4	2.6
4775	Retail sale of cosmetic and toilet articles in specialized stores	12,856	37,094	40,919	43,080	218.3	16.1	188.5	5.3
4776	Retail sale of flowers, plants, seeds, fertilizers, pet animals and pet food in specialized stores	10,911	11,622	14,520	12,745	33.1	9.7	6.5	-12.2
4777	Retail sale of watches and jewelry in specialized stores	3,358	5,968	11,320	13,351	237.1	123.7	77.7	17.9
4778	Other retail sale of new goods in specialized stores	8,003	11,801	11,693	10,945	46.1	-7.3	47.5	-6.4
4779	Retail sale of second-hand goods in stores	16	81	176	139	1,000.0	71.6	406.3	-21.0
4781	Retail sale via stalls and markets of food, beverages and tobacco products	*	*	*	*	*	*	*	*
4782	Retail sale via stalls and markets of textiles, clothing and footwear	*	*	*	*	*	*	*	*
4789	Retail sale via stalls and markets of other goods	*	*	*	*	*	*	*	*
4791	Retail sale via mail order houses or via Internet	31,275	32,079	39,984	34,296	27.8	6.9	2.6	-14.2
4799	Other retail sale not in stores, stalls or markets	1,405	1,421	1,449	1,290	3.1	-9.2	1.1	-11.0
Total		1,813,324	2,243,396	2,756,658	2,653,865	52.0	18.3	23.7	-3.7

Notes:

The table and the total include the turnover of the economic class "4531: Wholesale trade of motor vehicle parts and accessories", given that several enterprises classified in this class have as secondary activity retail trade and in order to present all classes of division "45: Wholesale and retail trade and repair of motor vehicles and motorcycles".

(*) Data are not published due to statistical confidentiality reasons and regarding the protection of the identity of the reporting enterprises.

(***) Extraordinary transactions were recorded in the data. Therefore, they are not published as they are not comparable.

Table 3: Quarterly turnover for the 5 biggest enterprises in the 10 largest classes of retail trade divisions (divisions 45 and 47 of NACE Rev.2 classification)

ECONOMIC ACTIVITY		TURNOVER (in thousand €)				Annual Rate of Change (%)		Quarterly Rate of Change (%)	
Code NACE Rev.2	Description	4 th Quarter 2019	1 st Quarter 2020	4 th Quarter 2020	1 st Quarter 2021	4 th Quarter 2020/2019	1 st Quarter 2021/2020	1 st Quarter 2020/ 4 th Quarter 2019	1 st Quarter 2021 / 4 th Quarter 2020
4511	Sale of cars and light motor vehicles	345,391	317,995	339,889	363,457	-1.6	14.3	-7.9	6.9
4520	Maintenance and repair of motor vehicles	62,169	53,310	59,427	64,799	-4.4	21.6	-14.2	9.0
4531	Wholesale trade of motor vehicle parts and accessories	65,096	51,141	61,931	54,824	-4.9	7.2	-21.4	-11.5
4711	Retail sale in non-specialized stores with food, beverages or tobacco predominating	2,417,677	2,269,863	2,655,554	2,226,781	9.8	-1.9	-6.1	-16.1
4719	Other retail sale in non-specialized stores	135,183	88,904	72,948	52,102	-46.0	-41.4	-34.2	-28.6
4730	Retail sale of automotive fuel in specialized stores	453,036	393,267	314,485	300,854	-30.6	-23.5	-13.2	-4.3
4752	Retail sale of hardware, paints and glass in specialized stores	57,548	35,581	42,728	26,604	-25.8	-25.2	-38.2	-37.7
4754	Retail sale of electrical household appliances in specialized stores	259,280	157,824	179,851**	124,667**	-30.6	-21.0	-39.1	-30.7
4771	Retail sale of clothing in specialized stores	245,270	124,958	100,530	68,639	-59.0	-45.1	-49.1	-31.7
4773	Dispensing chemist in specialized stores	14,987	15,853	17,205	16,026	14.8	1.1	5.8	-6.9

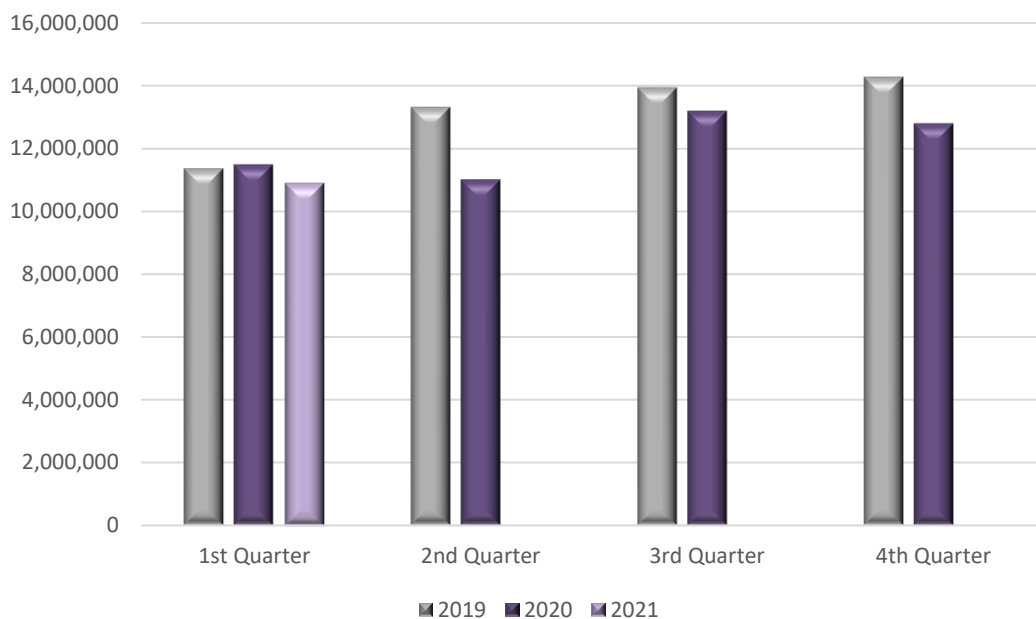
(**) Quarterly data are available for less than the 5 biggest enterprises

Table 4: Monthly turnover for the 5 biggest enterprises in the 10 largest classes of retail trade divisions (divisions 45 and 47 of NACE Rev.2 classification)

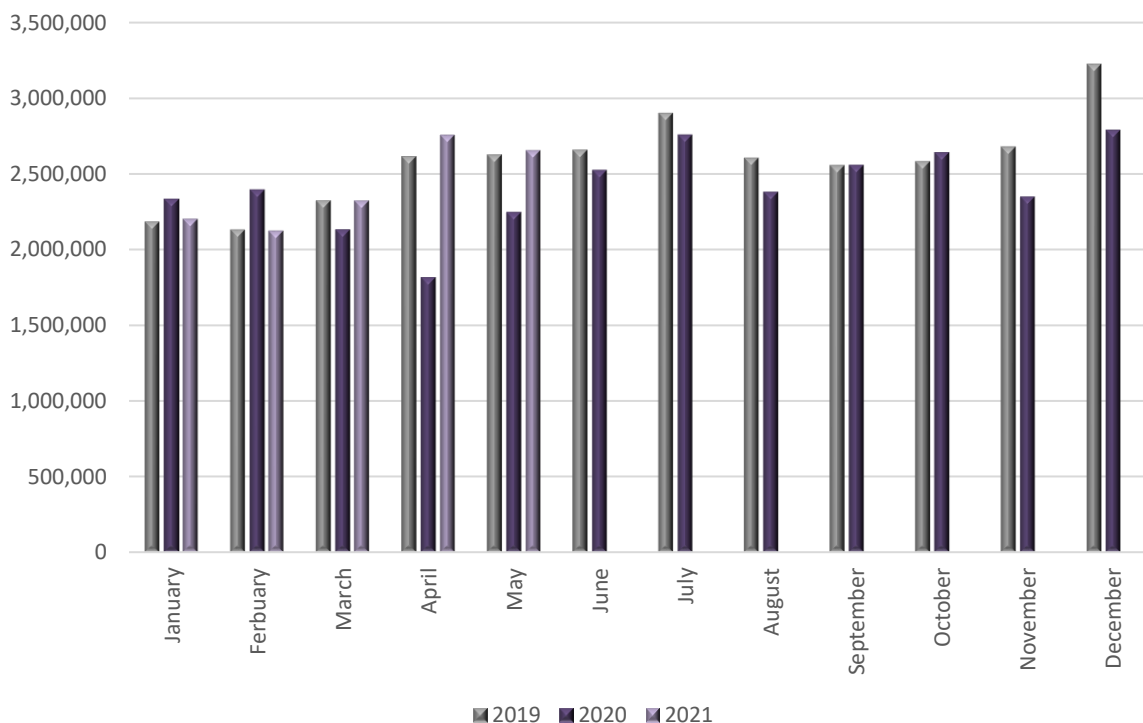
ECONOMIC ACTIVITY		TURNOVER (in thousand €)				Annual Rate of Change (%) 2021/2020		Monthly Rate of Change (%) May /April	
Code NACE Rev.2	Description	April 2020	May 2020	April 2021	May 2021	April	May	2020	2021
4511	Sale of cars and light motor vehicles	48,206	82,394	144,796	148,930	200.4	80.8	70.9	2.9
4520	Maintenance and repair of motor vehicles	7,003	13,973	25,800	28,850	268.4	106.5	99.5	11.8
4531	Wholesale trade of motor vehicle parts and accessories	7,402	16,654	18,718	19,961	152.9	19.9	125.0	6.6
4711	Retail sale in non-specialized stores with food, beverages or tobacco predominating	867,771	768,808	899,741	754,324	3.7	-1.9	-11.4	-16.2
4719	Other retail sale in non-specialized stores	5,994	32,799	28,849	33,145	381.3	1.1	447.2	14.9
4730	Retail sale of automotive fuel in specialized stores	64,799	97,613	123,176	138,440	90.1	41.8	50.6	12.4
4752	Retail sale of hardware, paints and glass in specialized stores	4,715	17,737	16,384	21,392	247.5	20.6	276.2	30.6
4754	Retail sale of electrical household appliances in specialized stores	34,448	62,240	60,402**	50,690**	75.3	-18.6	80.7	-16.1
4771	Retail sale of clothing in specialized stores	4,717	34,518	33,622	62,404	612.8	80.8	631.8	85.6
4773	Dispensing chemist in specialized stores	4,444**	4,299**	4,598**	4,302**	3.5	0.1	-3.3	-6.4

(**) Monthly data are available for less than the 5 biggest enterprises

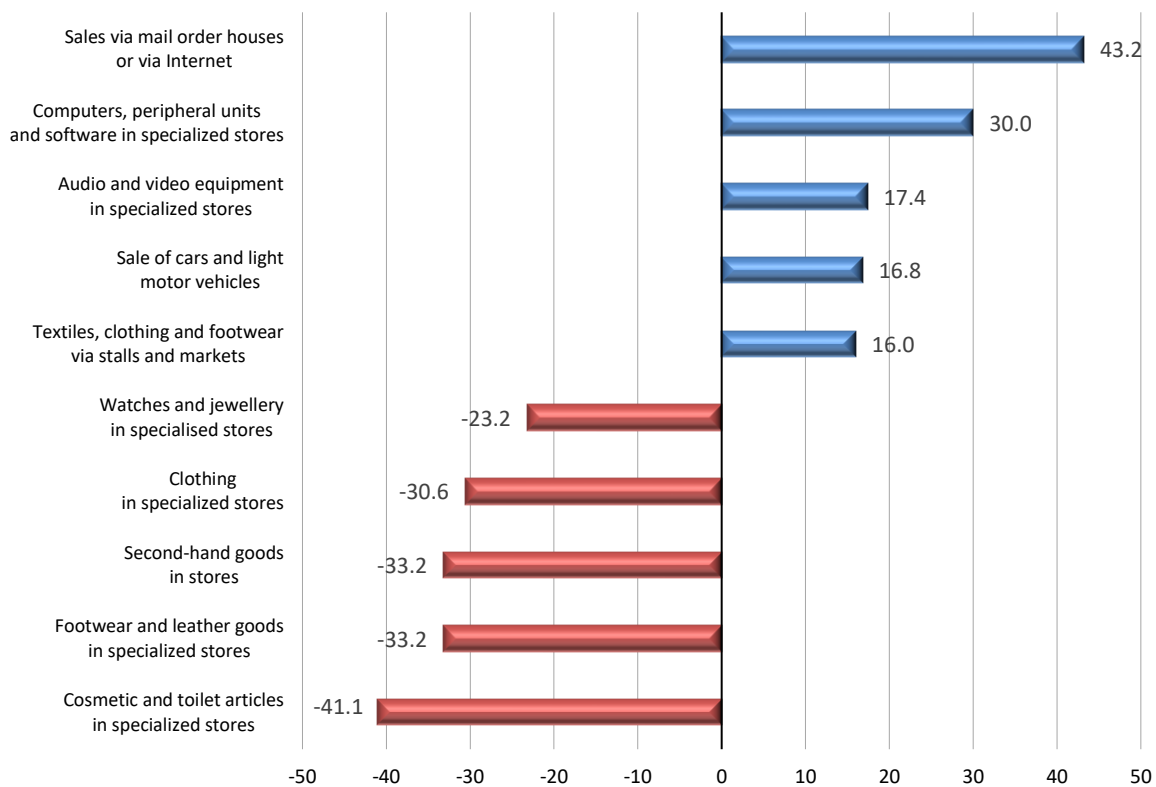
Graph 1: Turnover (in thousand euro) for the total of enterprises in all classes of the retail trade divisions (divisions 45 and 47 of NACE Rev.2 classification)



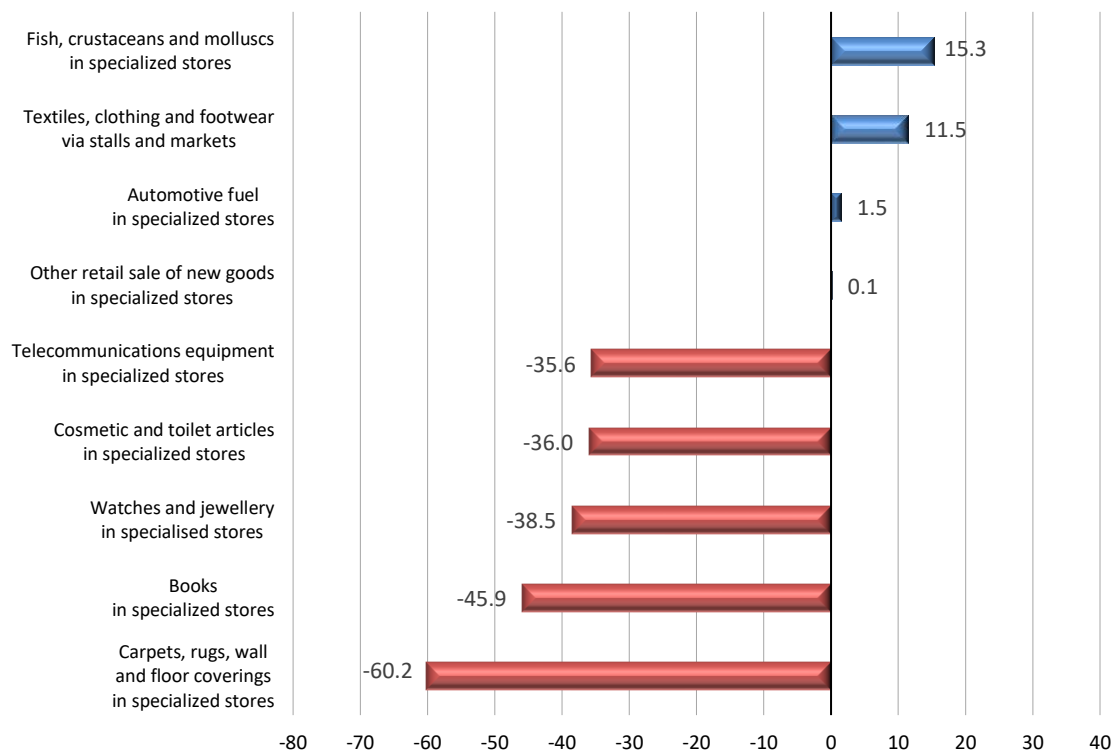
Graph 2: Turnover (in thousand euro) for the total of enterprises obliged to double-entry accounting bookkeeping in all classes of the retail trade divisions (divisions 45 and 47 of NACE Rev.2 classification)



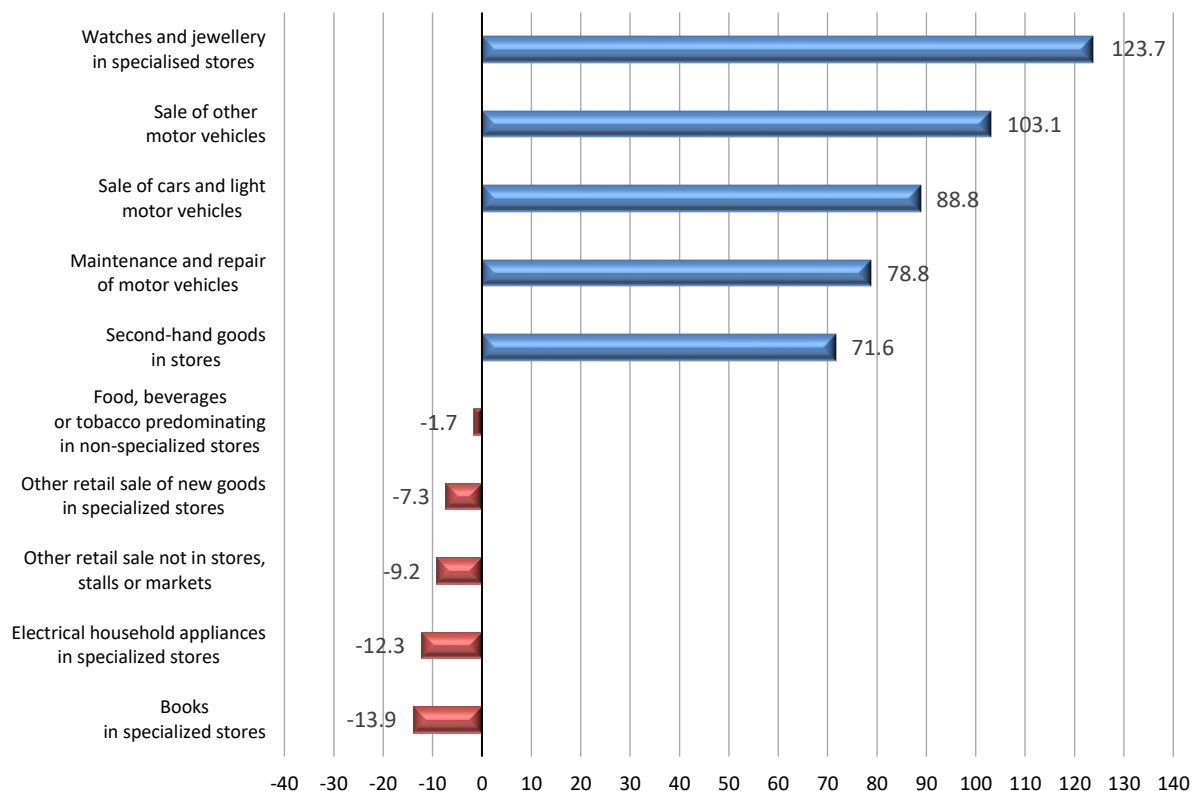
Graph 3: Biggest changes (%) for the total of enterprises classified in the activity classes of the retail trade divisions (divisions 45 and 47 of NACE Rev. 2 classification) 1st Quarter 2021 / 1st Quarter 2020



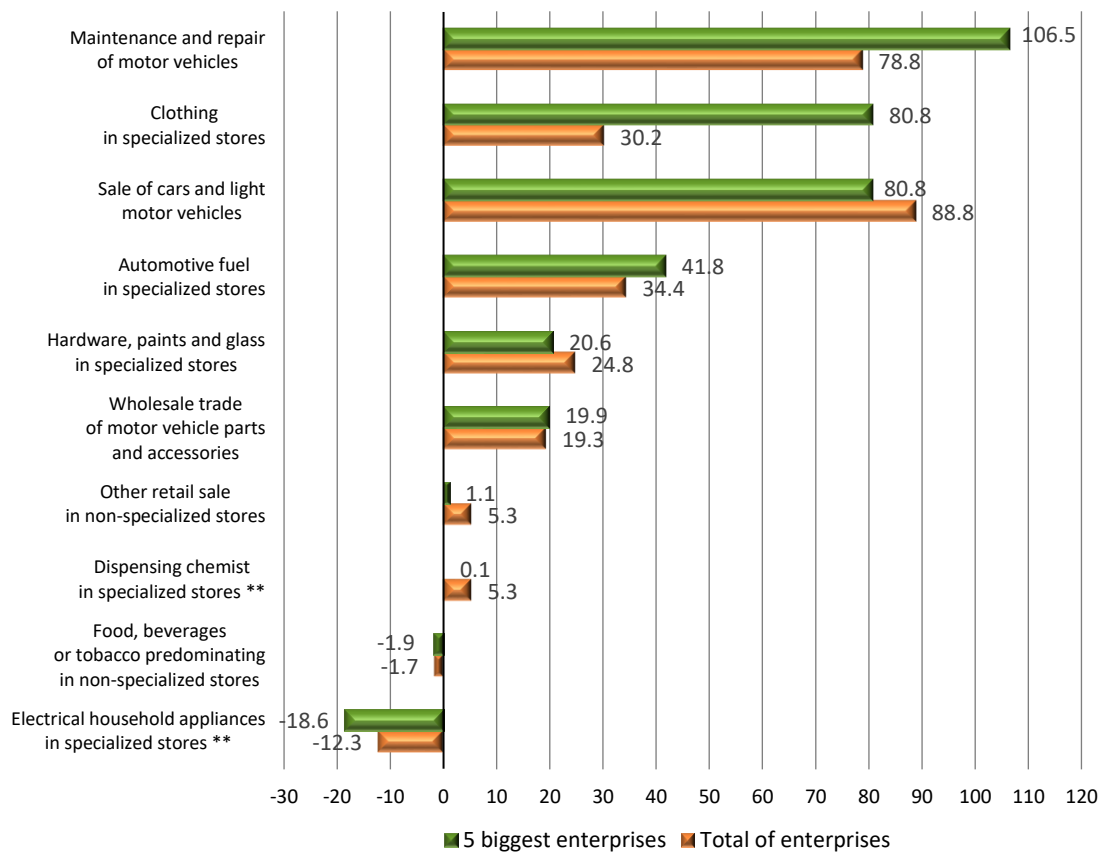
Graph 4: Biggest changes (%) for the total of enterprises classified in the activity classes of the retail trade divisions (divisions 45 and 47 of NACE Rev. 2 classification) 1st Quarter 2021 / 4th Quarter 2020



Graph 5: Biggest changes (%) for the total of enterprises obliged to double-entry accounting bookkeeping in all classes of the retail trade divisions (divisions 45 and 47 of NACE Rev.2 classification) May 2021 / May 2020

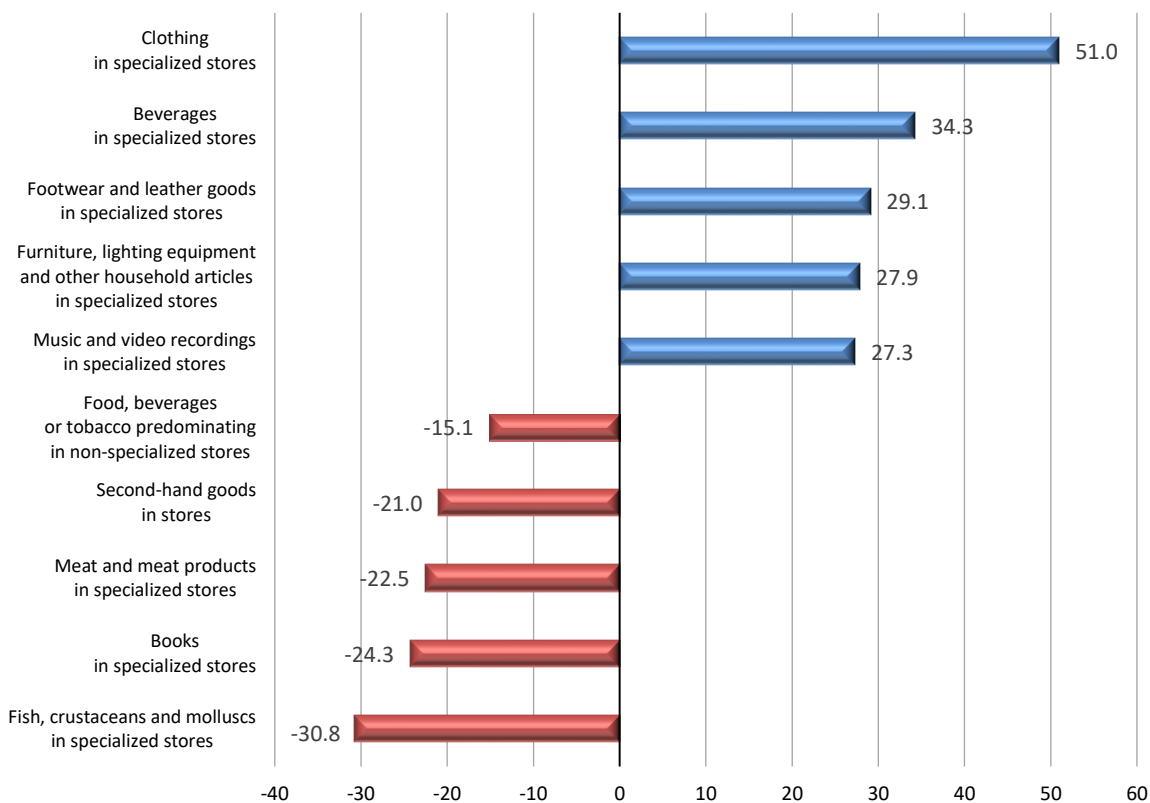


Graph 6: Changes (%) for the 5 biggest enterprises in the 10 largest classes of the retail trade divisions (divisions 45 and 47 of NACE Rev.2 classification) and corresponding changes for the total of enterprises of the same classes May 2021 / May 2020

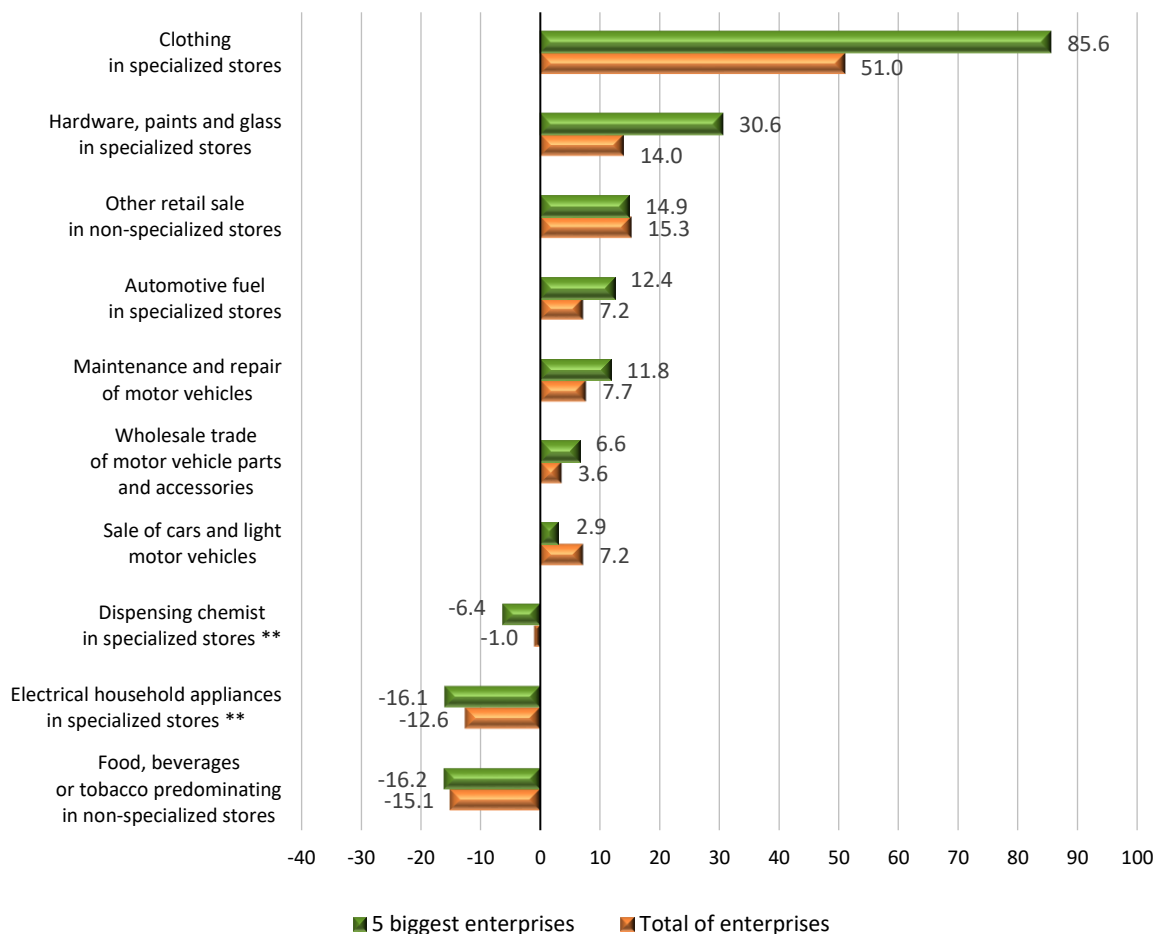


(**) For the activity "Dispensing chemist in specialized stores" monthly data are available for less than the five (5) biggest enterprises. For the activity "Retail sale of electrical household appliances in specialized stores" monthly data for May 2021 are available for less than the five (5) biggest enterprises.

Graph 7: Biggest changes (%) for the total of enterprises obliged to double-entry accounting bookkeeping in all classes of the retail trade divisions (divisions 45 and 47 of NACE Rev.2 classification) May 2021 / April 2021



Graph 8: Changes (%) for the 5 biggest enterprises in the 10 largest classes of the retail trade divisions (divisions 45 and 47 of NACE Rev.2 classification) and corresponding changes for the total of enterprises of the same classes May 2021 / April 2021



(**) For the activity "Dispensing chemist in specialized stores" monthly data are available for less than the five (5) biggest enterprises. For the activity "Retail sale of electrical household appliances in specialized stores" monthly data for April and May 2021 are available for less than the five (5) biggest enterprises.

Generally The statistical data presented in this Press Release have been compiled on the basis of the linking and processing of primary data from the following sources:

- The final Statistical Business Register of ELSTAT, of the reference year 2018.
- Administrative transactions files (tax, etc) of the reference years 2019, 2020 and 2021.

In particular, the following primary data have been used per source:

- Active enterprises, the economic activity class and the 5 biggest enterprises in the 10 largest classes of retail trade divisions in terms of turnover, according to the final Statistical Business Register of ELSTAT of the reference year 2018.
- Income data from administrative transactions files of the years 2019, 2020 and 2021.

Statistical classifications For the economic activities, the European statistical classification of economic activities [NACE Rev. 2](#) is used.

Reference Period May 2021.

Statistical unit The statistical unit is the legal unit (distinct TIN – Tax Identification Numbers).

Comparability The announced statistical data are comparable with the data of the final Statistical Business Register of ELSTAT, of the reference year 2018 (relevant link from the webpage of ELSTAT, where tables and information on the methodology applied are provided [Statistical Business Register](#)).

References Analytical tables are available under ELSTAT's website (www.statistics.gr) at the following link: <https://www.statistics.gr/en/statistics/-/publication/SBR04/>