



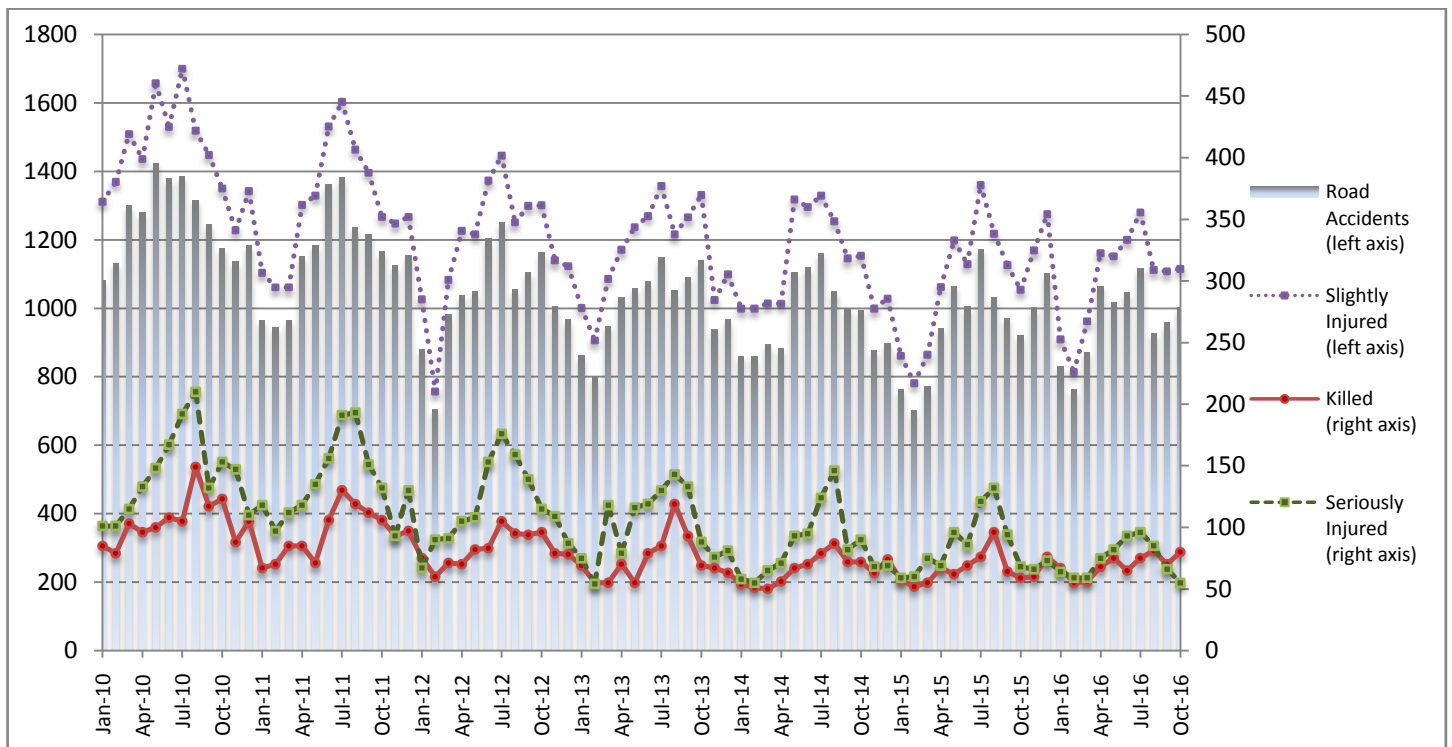
PRESS RELEASE

ROAD ACCIDENTS: October 2016

The Hellenic Statistical Authority (ELSTAT) announces data on Road Accidents for October 2016. In particular, the road traffic accidents which occurred in Greece, resulting in injured or killed persons, decreased by 8.8% in comparison with the corresponding month of 2015 (1,002 road accidents in October 2016 against 921 road accidents in October 2015).

Among the casualties of the injury-causing accidents that occurred in October 2016, 80 persons were killed, 55 persons were seriously injured and 1,115 persons were slightly injured. In contrast, in October 2015 the corresponding figures were: 59 persons killed, 68 seriously injured and 1,054 slightly injured. Therefore, road accident casualties in October 2016 recorded an increase by 35.6% for persons killed, a decrease by 19.1% for persons seriously injured and an increase by 5.8% for persons slightly injured.

**Graph 1: Road Traffic Accidents and casualties
(January 2010-October 2016)**



Provisional data: Jan 16 – Oct 16

Information:

Social Statistics Division
Justice and Public Order Statistics Section
D. Athanasopoulou
Tel: 213 1352767
Fax : 213 1352764
e-mail: d.athanasopoulou@statistics.gr

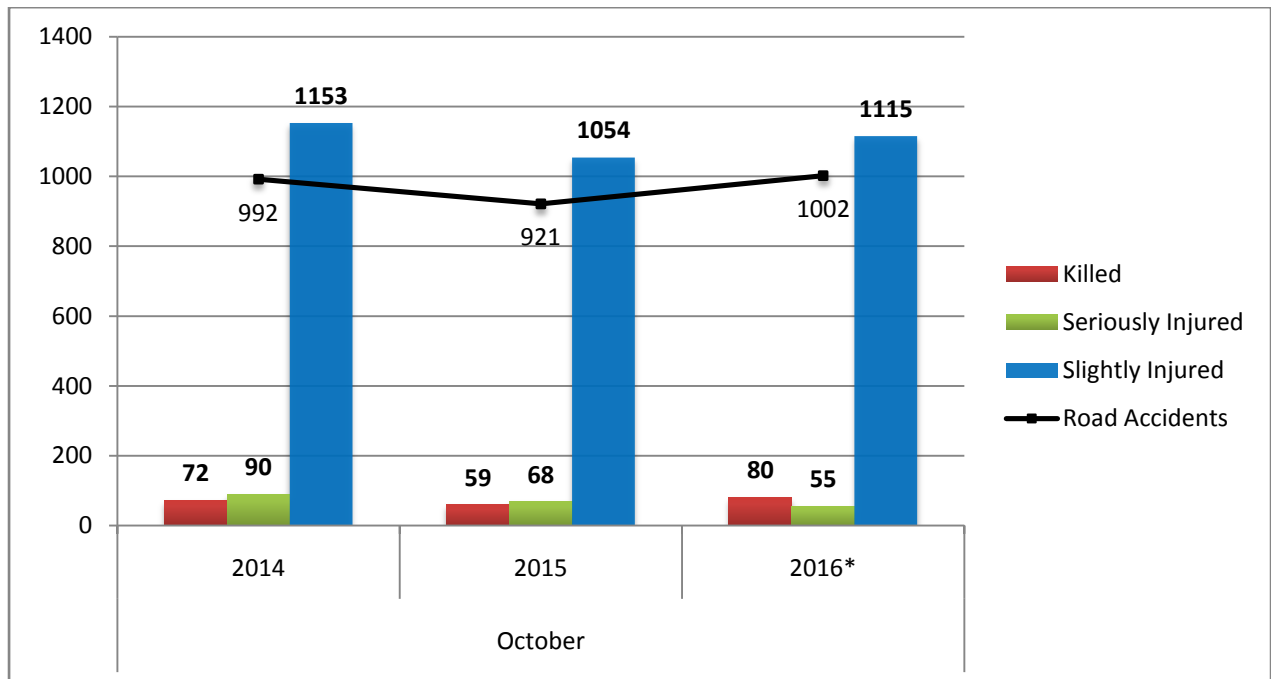
Table 1: Road Traffic Accidents and casualties (2014-2016)

	October				
	2014	2015	2015/2014 (%)	2016*	2016*/2015 (%)
Road Accidents	992	921	-7.2%	1,002	8.8%
Killed	72	59	-18.1%	80	35.6%
Total Injured	1,243	1,122	-9.7%	1,170	4.3%
Seriously Injured	90	68	-24.4%	55	-19.1%
Slightly Injured	1,153	1,054	-8.6%	1,115	5.8%

* Provisional data

Note: For year 2015 data are not available for department of Zakynthos due to non-response.

Graph 2: Road Traffic Accidents and casualties (2014-2016)



* Provisional data

Note: For year 2015 data are not available for department of Zakynthos due to non-response.

Table 2:
Road Traffic Accidents and casualties, by region and department.
(October 2015 and 2016)

Region and Department	Road Accidents			Killed			Seriously Injured			Slightly Injured		
	2015	2016*	%	2015	2016*	%	2015	2016*	%	2015	2016*	%
Greece Total	921	1,002	8.8%	59	80	35.6%	68	55	-19.1%	1,054	1,115	5.8%
Anatoliki Makedonia, Thraki (East Macedonia and Thrace)	38	27	-28.9%	2	1	-50.0%	4	4	0.0%	39	27	-30.8%
Drama	3	5	66.7%	0	0		1	0		3	5	
Evros	7	4	-42.9%	0	1		1	0		6	4	
Kavala	11	7	-36.4%	1	0		1	2		11	8	
Xanthi	9	5	-44.4%	1	0		1	2		11	4	
Rodopi	8	6	-25.0%	0	0		0	0		8	6	
Kentriki Makedonia (Central Macedonia)	176	207	17.6%	6	14	133.3%	7	7	0.0%	211	249	18.0%
Imathia	5	5	0.0%	1	1		0	0		6	6	
Thessaloniki	147	169	15.0%	1	6		3	5		179	208	
Kilkis	2	3	50.0%	0	0		1	0		1	3	
Pella	7	10	42.9%	1	1		2	1		8	9	
Pierria	4	2	-50.0%	3	1		1	0		2	1	
Serres	8	10	25.0%	0	3		0	1		11	14	
Chalkidiki	3	8	166.7%	0	2		0	0		4	8	
Dytiki Makedonia (West Macedonia)	8	5	-37.5%	1	2	100.0%	0	1	-	9	2	-77.8%
Grevena	2	0	-100.0%	0	0		0	0		4	0	
Kastoria	2	1	-50.0%	0	0		0	0		2	1	
Kozani	3	4	33.3%	0	2		0	1		3	1	
Florina	1	0	-100.0%	1	0		0	0		0	0	
Ipeiros (Epirus)	8	15	87.5%	0	5	-	1	4	300.0%	17	14	-17.6%
Arta	1	1	0.0%	0	0		0	0		1	2	
Thesprotia	4	4	0.0%	0	0		1	0		6	6	
Ioannina	3	8	166.7%	0	5		0	3		10	3	
Preveza	0	2	-	0	0		0	1		0	3	
Thessalia (Thessaly)	16	32	100.0%	2	5	150.0%	4	5	25.0%	14	33	135.7%
Karditsa	3	11	266.7%	0	1		0	1		4	11	
Larisa	5	11	120.0%	0	2		0	2		6	14	
Magnisia	5	3	-40.0%	1	2		1	1		3	0	
Trikala	3	7	133.3%	1	0		3	1		1	8	
Ionioi Nisoi (Ionian Islands)	12	8	-33.3%	1	0	-100.0%	0	0	-	15	9	-40.0%
Zakynthos **	-	1	-	-	0		-	0		-	1	
Kerkyra	9	4	-55.6%	1	0		0	0		12	4	
Kefallinia	1	1	0.0%	0	0		0	0		1	1	
Lefkada	2	2	0.0%	0	0		0	0		2	3	

* Provisional data

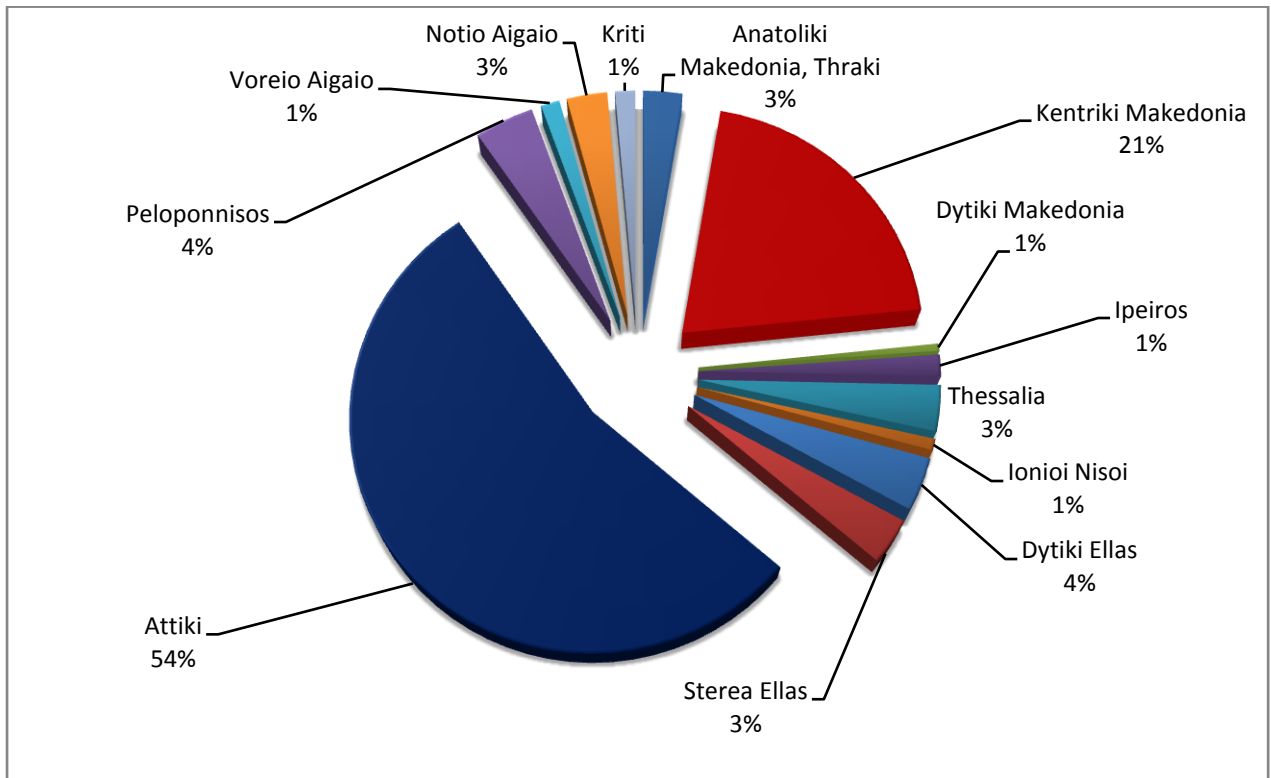
** Data not available due to non-response

Table 2 (Continued):
Road Traffic Accidents and casualties, by region and department.
(October 2015 and 2016)

Region and Department	Road Accidents			Killed			Seriously Injured			Slightly Injured		
	2015	2016*	%	2015	2016*	%	2015	2016*	%	2015	2016*	%
Dytiki Ellas (West Greece)	55	37	-32.7%	4	4	0.0%	5	0	-100.0%	64	40	-37.5%
Aitolia. Akarnania	11	16	45.5%	3	0		1	0		15	18	
Achaia	31	19	-38.7%	1	4		3	0		35	20	
Ileia	13	2	-84.6%	0	0		1	0		14	2	
Sterea Ellas	36	32	-11.1%	3	7	133.3%	5	3	-40.0%	41	32	-22.0%
Voiotia	4	4	0.0%	1	3		0	2		5	4	
Evvoia	11	19	72.7%	1	2		3	1		13	17	
Evrytania	2	0	-100.0%	0	0		0	0		3	0	
Fthiotida	19	7	-63.2%	1	2		2	0		20	9	
Fokida	0	2	-	0	0		0	0		0	2	
Attiki (Attica)	469	543	15.8%	18	27	50.0%	19	16	-15.8%	546	607	11.2%
Peloponnisos (Peloponnese)	47	41	-12.8%	9	4	-55.6%	10	6	-40.0%	42	51	21.4%
Argolida	11	6	-45.5%	1	0		2	1		12	8	
Arkadia	3	7	133.3%	0	0		1	0		3	8	
Korinthia	16	20	25.0%	2	3		5	3		16	24	
Lakonia	8	3	-62.5%	4	1		2	2		4	3	
Messinia	9	5	-44.4%	2	0		0	0		7	8	
Voreio Aigaio (North Aegean)	12	13	8.3%	1	3	200.0%	5	0	-100.0%	14	15	7.1%
Lesvos	8	5	-37.5%	1	2		3	0		5	6	
Samos	2	3	50.0%	0	0		1	0		8	3	
Chios	2	5	150.0%	0	1		1	0		1	6	
Notio Aigaio (South Aegean)	23	28	21.7%	3	4	33.3%	4	5	25.0%	22	26	18.2%
Dodekanisos	12	17	41.7%	3	3		2	4		9	14	
Kyklades	11	11	0.0%	0	1		2	1		13	12	
Kriti (Crete)	21	14	-33.3%	9	4	-55.6%	4	4	0.0%	20	10	-50.0%
Irakleio	8	5	-37.5%	4	2		2	1		10	2	
Lasithi	4	3	-25.0%	1	0		1	1		4	2	
Rethymno	2	1	-50.0%	2	1		0	0		0	1	
Chania	7	5	-28.6%	2	1		1	2		6	5	

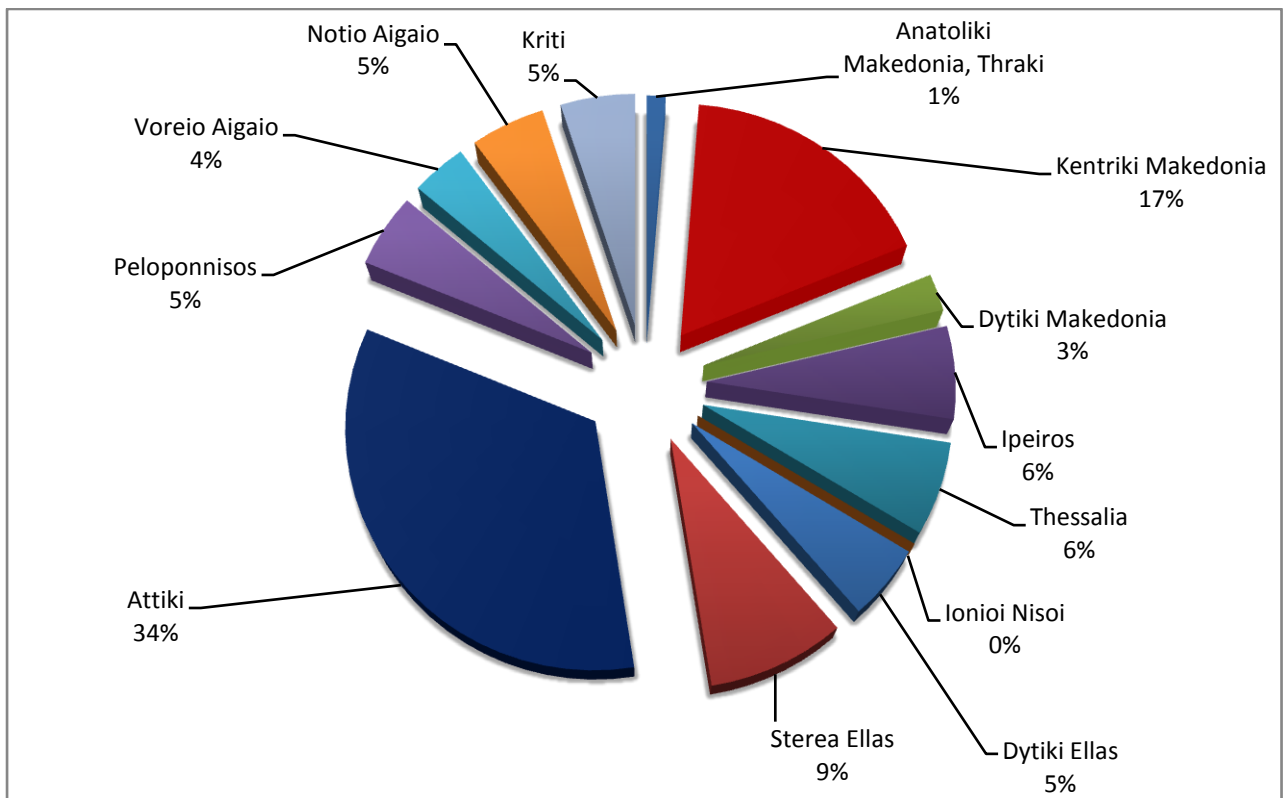
* Provisional data

**Graph 3: Road Traffic Accidents by region
October 2016 ***



* Provisional data

**Graph 4: Killed by region
October 2016 ***



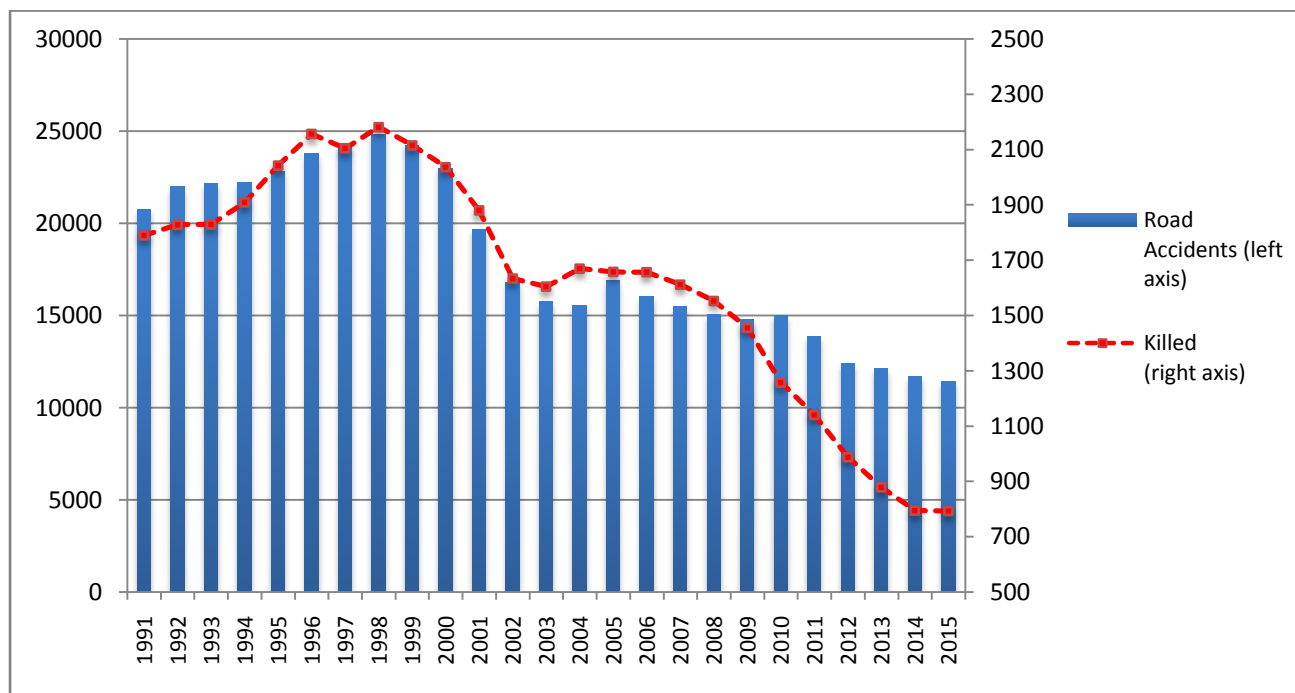
* Provisional data

Table 3: Road Traffic Accidents and casualties for the period January-October 2014, 2015 and 2016

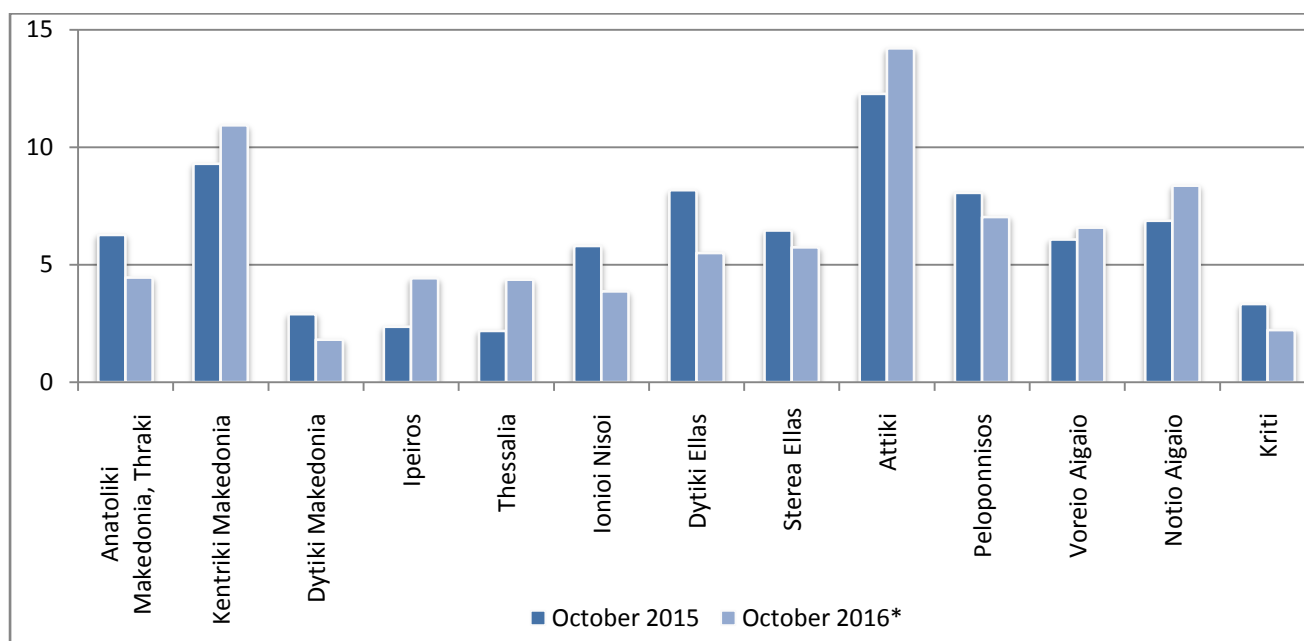
	2014		2015		2016 *
	January - October	Total	January - October	Total	January - October
Road Accidents	9,916	11,690	9,337	11,440	9,592
Annual Change (%) :			-5.8%	-2.1%	2.7%
Killed	658	795	657	793	692
Annual Change (%) :			-0.2%	-0.3%	5.3%

* Provisional data

Graph 5: Total Road Traffic Accidents and fatalities (1991-2015)

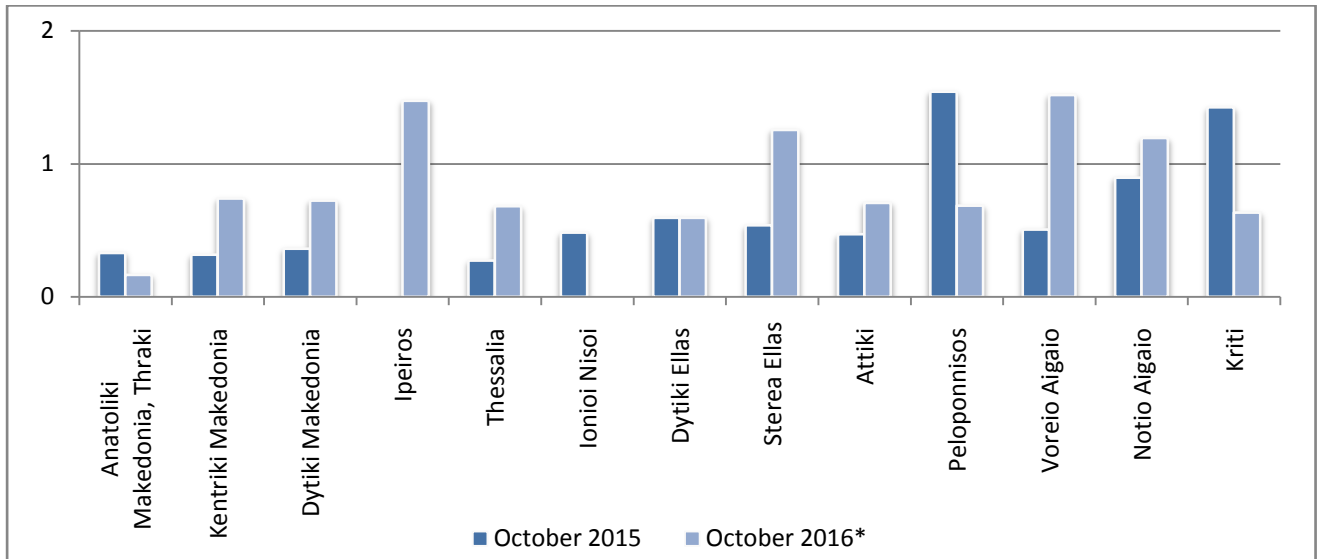


Graph 6: Road accidents per 100,000 inhabitants

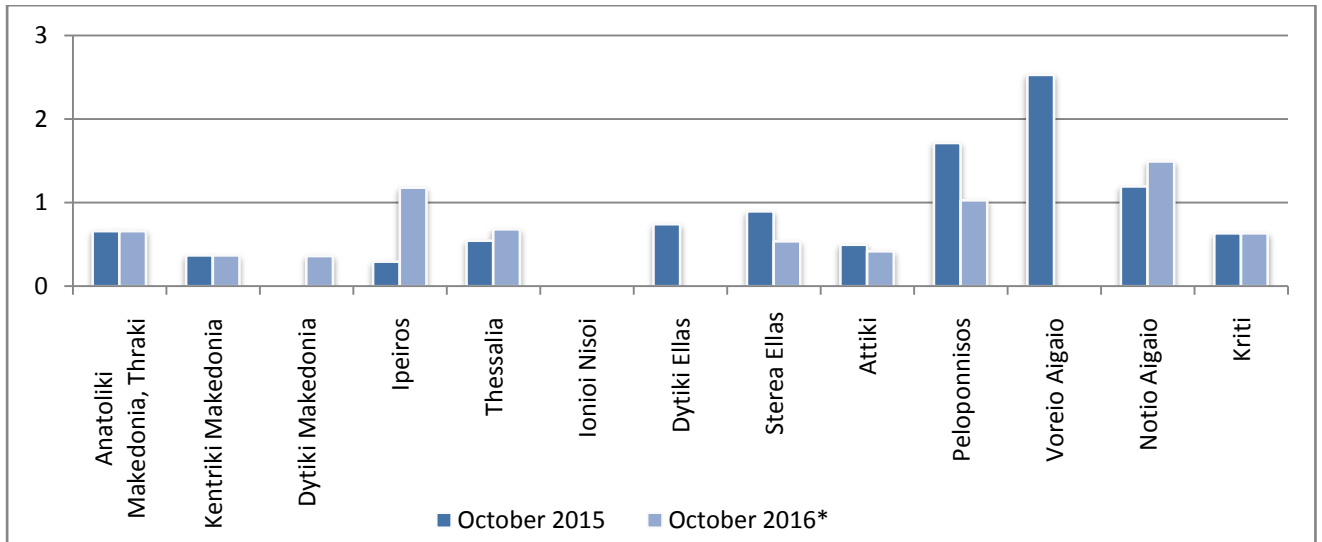


* Provisional data

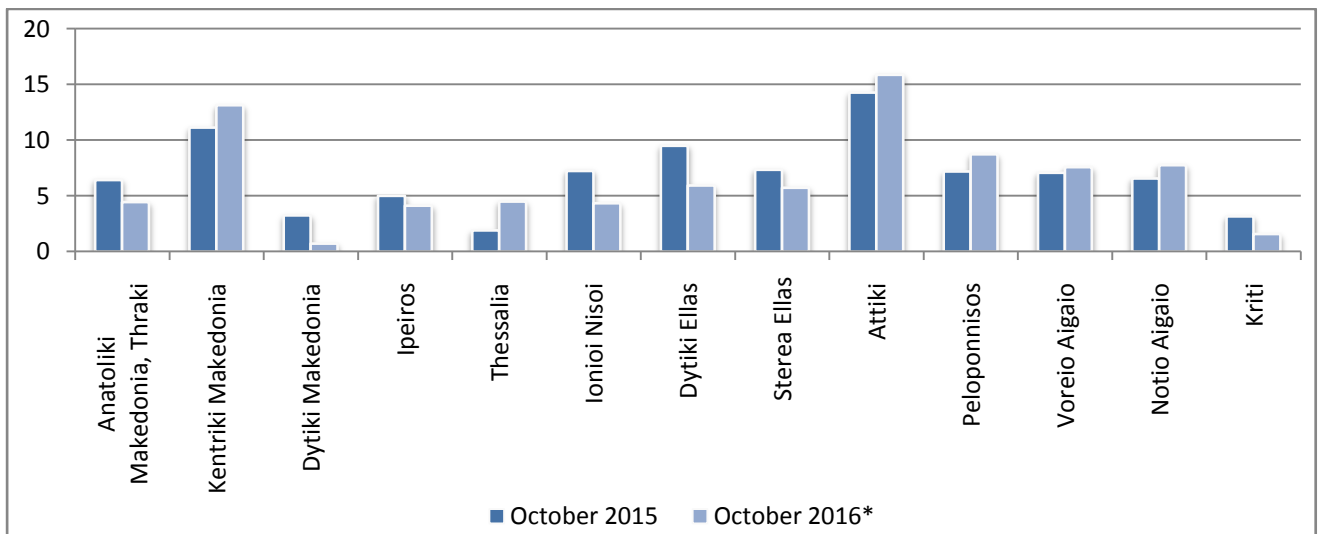
Graph 7: Persons killed per 100,000 inhabitants



Graph 8: Persons seriously injured per 100,000 inhabitants



Graph 9: Persons slightly injured per 100,000 inhabitants



* Provisional data

Explanatory Notes

Survey on Road Accidents	<p>The survey on road accidents is conducted on a monthly basis and it records, for each department of Greece and for each month separately, the number of accidents by fatal and/or non-fatal accident, as well as the number of persons injured by categories (drivers, passengers, pedestrians). On a yearly basis, road accidents are further analyzed.</p> <p>The competent agencies for filling in/collecting the questionnaires on road accidents are the local Police Authorities and the local Port Authorities of Greece.</p> <p>The lower level of analysis for the place where an injury road accident occurred is the settlement (oikismos), which is described by a 8-digit geographic code. Data are collected on a monthly basis.</p> <p>The main variables are the following: place of accident, kind of road, casualties, conditions of road surface and type of road.</p>
Legal basis	<p>The Survey on Road Traffic Accidents is governed by Council Decision 93/704 of the European Community.</p>
Reference Period	<p>01.10.2016 to 31.10.2016</p>
Availability of Data	<p>Provisional data are available 2 months after the reference month Final data are available 1 year after the reference year</p>
National Definitions	<p>Road accident (injury accident): Any accident involving at least one road motor vehicle in motion on a public road or square to which the public has access (excluding yards, industrial sites or vehicle depot of public transport enterprises), resulting in at least one injured or killed person. Accidents with only material damages are not included.</p> <p>Person killed: Any person killed immediately or dying within 30 days as a result of an injury accident (This national definition applies since 01.01.1996)</p> <p>Person injured: Any person who sustained an injury as result of an injury accident, and who normally needs medical treatment.</p> <p>Seriously injured: Any person who sustained an injury as result of an injury accident, such as brain damages, mutilation, multiple injuries, which may result in lack of awareness or which are life-threatening.</p> <p>Slightly injured: Any person injured who sustained minor and not life-threatening injuries.</p> <p>Vehicle: Include motor vehicles, trolleybuses, motorcycles, bicycles, motorbikes, agricultural and road making machines, animal and hand-drawn vehicles. Railway vehicles are excluded, unless the road accident involves at least one of the aforementioned types of vehicles and therefore, railway vehicles are considered vehicles.</p>
Methodology	<p>The questionnaires of the survey are filled in by the local Police Authorities and the local Port Authorities as well.</p>
References	<p>More information about road accidents is available on ELSTAT's website and more specifically at the link: www.statistics.gr > Population & Social Conditions > Accidents > Road Traffic Accidents.</p> <p>It should be noted that previous press releases and time series are available on ELSTAT's website: www.statistics.gr</p>