



PRESS RELEASE

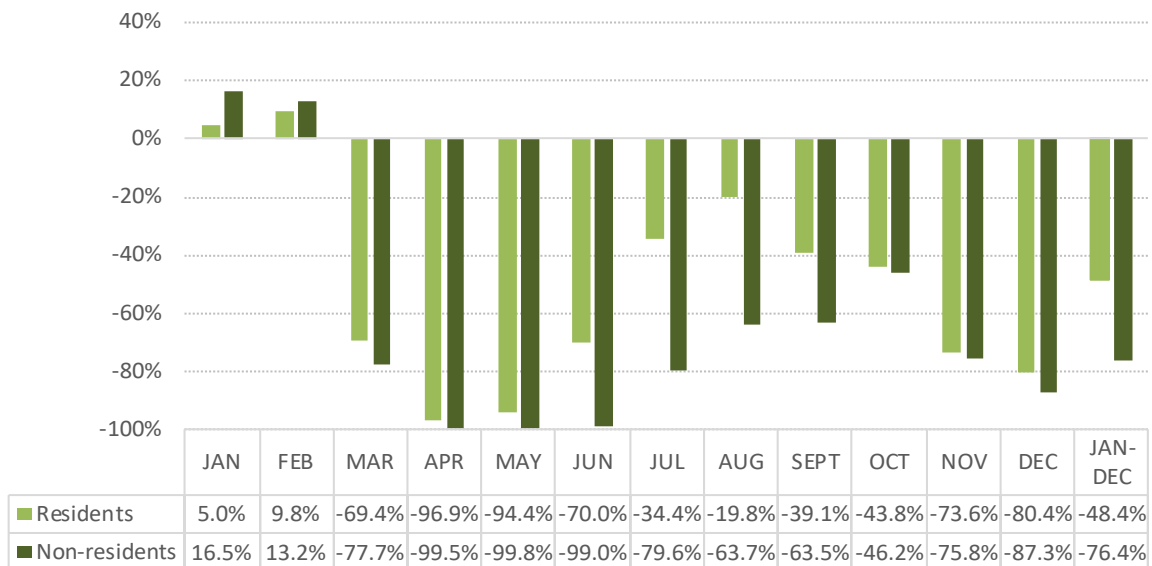
ARRIVALS AND NIGHTS SPENT IN HOTELS, SIMILAR ESTABLISHMENTS AND TOURIST CAMPSITES: 2020 (final data)

According to the results of the survey on arrivals and nights spent in hotels, similar establishments and tourist campsites, conducted by the Hellenic Statistical Authority (ELSTAT), for the total of these establishments, in 2020 compared with 2019, a decrease is recorded both in arrivals, by 69.4%, (Tables 1 and 4) and in nights spent, by 71.9% (Tables 2 and 5).

More specifically, in 2020 compared with 2019, a decrease of 76.6% and 76.4% is recorded in arrivals and nights spent, respectively, by non-residents, while arrivals and nights spent by residents recorded a decrease of 50.4% and 48.4%, respectively (Tables 1, 2, 7 and 8, Graph 1).

The annual occupancy rate of the bed places in hotels and similar establishments (excluding tourist campsites) amounted to 29.6% in 2020, compared with 48.7% in 2019 (Tables 3 and 6).

Graph 1. Annual change 2020/2019 (%) of nights spent in hotels, similar establishments and tourist campsites, by month



Information on methodological issues:

Sectoral Statistics Division
Tourism and Cultural Statistics Section
Head of the Section: Asimina Katri
Tel: +30 213 135 2168
e-mail: a.katri@statistics.gr

Information for data provision:

Tel. +30 213 135 2022, 2308, 2310
e-mail: data.dissem@statistics.gr

According to the monthly distribution of the data, 71.8% of the arrivals and 83.2% of the nights spent, in hotels, similar establishments and tourist campsites of Greece, are recorded during the period from July to October (Tables 1 and 2, Graph 2).

As regards the breakdown of the survey data by NUTS 2 Region, a significant decrease of arrivals is observed in arrivals and nights spent, in absolute values, in Notio Aigaio (72.0% in arrivals and 73.1% in nights spent), Kriti (71.9% in arrivals and 74.7% in nights spent), Attiki (72.6% in arrivals and 71.1% in nights spent) and Kentriki Makedonia (67.8% in arrivals and 72.9% in nights spent) (Tables 4 and 5).

In 2020, the largest share of arrivals and nights spent in hotels, similar establishments and tourist campsites, is recorded by non-residents, i.e. 55.7% of arrivals and 70.7% of nights spent (Graph 3).

In 2020, the biggest share of arrivals and nights spent by non-residents in hotels, similar establishments and tourist campsites is recorded by customers (guests) whose country of residence is in Europe (91.7% of arrivals and 95.0% of nights spent) with a significant contribution from the EU Members States (68.5% of arrivals and 71.4% of nights spent). The largest contribution concerning arrivals is recorded for Germany (24.5% of arrivals and 30.6% of nights spent) and for France (11.8% of arrivals and 8.6% of nights spent). As regards the rest of the European countries, the largest contribution is recorded for the United Kingdom (17.0% of arrivals and 18.7% of nights spent) (Tables 7 and 8).

When comparing the data of arrivals and nights spent in hotels, similar establishments and tourist campsites by country of residence of the year 2020 with the corresponding data of the year 2019, a significant decrease of arrivals, in absolute values, is recorded, among EU Members States, for Germany (58.6% in arrivals and 60.0% in nights spent), France (64.3% in arrivals and 68.6% in nights spent) and Italy (83.4% in arrivals and 84.8% in nights spent). As regards the other European countries a significant decrease of arrivals, in absolute values, is recorded for the United Kingdom (71.1% in arrivals and 74.0% in nights spent) and Russia (96.4% in arrivals and 97.9% in nights spent). From the rest of the continents, a significant decrease in arrivals, in absolute values, is recorded from America, and, in particular, for the United States of America (93.2% in arrivals and 91.9% in nights spent) (Tables 7 and 8).

Table 1. Arrivals of residents and non-residents at hotels, similar establishments and tourist campsites, by month, 2019 and 2020

	2019					2020					Change % of total 2020/2019
	Hotels and similar establishments			Tourist campsites		Hotels and similar establishments			Tourist campsites ⁽¹⁾⁽²⁾		
	Total	Residents	Non-residents	Residents	Non-residents	Total	Residents	Non-residents	Residents	Non-residents	
Total	27,539,434	7,369,417	19,694,349	161,393	314,275	8,418,434	3,597,180	4,612,782	135,200	73,272	-69.4
January	640,395	431,834	208,170	123	268	740,298	473,668	266,033	27	570	15.6
February	683,702	439,306	243,981	97	318	791,553	499,120	291,898	43	492	15.8
March	1,029,916	592,263	436,512	184	957	231,490	148,875	82,295			-77.5
April	1,863,610	672,064	1,181,583	1,019	8,944	15,797	12,198	3,599	-	-	-99.2
May	3,035,350	579,757	2,416,815	4,890	33,888	32,419	27,698	4,721	-	-	-98.9
June	3,847,812	697,685	3,078,585	21,876	49,666	308,783	241,637	48,366	13,550	5,230	-92.0
July	4,300,935	789,609	3,385,486	48,168	77,672	1,374,393	563,737	746,973	44,319	19,364	-68.0
August	4,617,561	961,142	3,492,493	74,592	89,334	2,162,163	766,378	1,301,495	67,402	26,888	-53.2
September	3,700,874	639,787	3,007,427	9,320	44,340	1,432,378	385,618	1,023,891	8,955	13,914	-61.3
October	2,213,257	557,848	1,646,691	789	7,929	1,078,279	298,628	773,000	842	5,809	-51.3
November	834,403	471,859	361,721	209	614	139,318	89,747	49,002	42	527	-83.3
December	771,619	536,263	234,885	126	345	111,563	89,876	21,509			-85.5

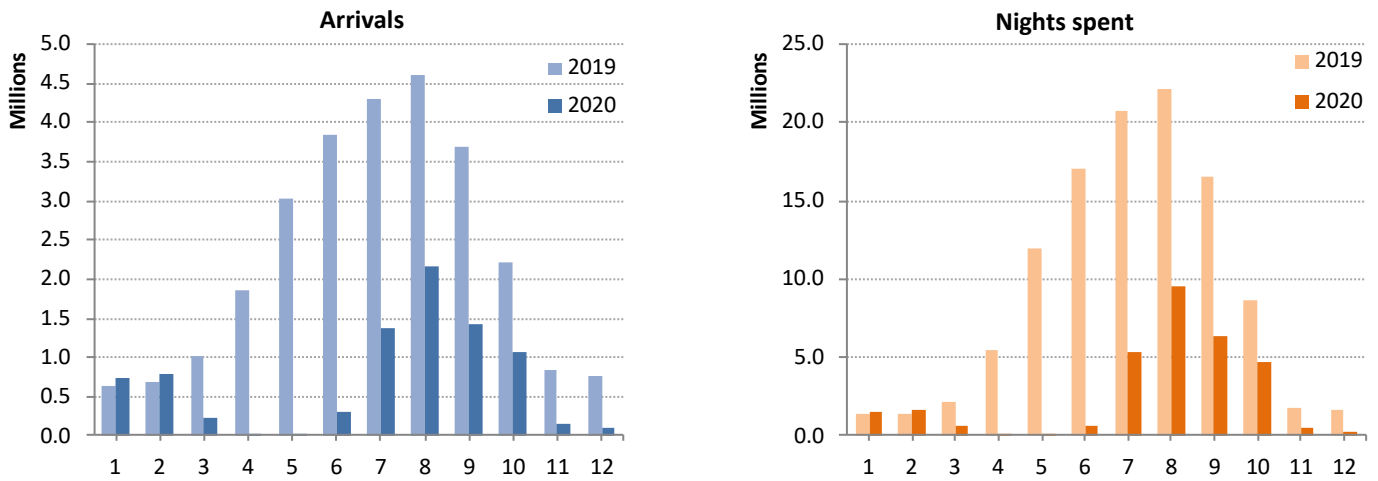
Table 2. Nights spent of residents and non-residents in hotels, similar establishments and tourist campsites, by month, 2019 and 2020

	2019					2020					Change % of total 2020/2019
	Hotels and similar establishments			Tourist campsites		Hotels and similar establishments			Tourist campsites ⁽¹⁾⁽²⁾		
	Total	Residents	Non-residents	Residents	Non-residents	Total	Residents	Non-residents	Residents	Non-residents	
Total	111,316,903	16,801,660	92,405,320	940,956	1,168,967	31,275,281	8,555,593	21,820,571	592,650	306,467	-71.9
January	1,365,266	857,470	505,820	1011	965	1,491,552	901,267	588,109	57	2,119	9.2
February	1,433,590	838,666	593,415	630	879	1,594,441	921,535	671,423	129	1,354	11.2
March	2,213,638	1,165,842	1,044,675	810	2,311	590,958	357,277	232,260			-73.3
April	5,523,398	1,453,384	4,045,634	3,728	20,652	63,072	44,660	18,412	-	-	-98.9
May	11,911,061	1,165,868	10,582,260	66,275	96,658	89,656	69,151	20,505	-	-	-99.2
June	17,070,122	1,568,024	15,173,917	135,051	193,130	668,592	470,229	135,709	40,020	22,634	-96.1
July	20,816,590	2,165,618	18,074,606	260,416	315,950	5,349,396	1,398,818	3,673,605	191,992	84,981	-74.3
August	22,180,605	3,027,762	18,407,849	393,604	351,390	9,550,277	2,422,103	6,696,329	320,480	111,365	-56.9
September	16,544,046	1,448,300	14,861,575	72,991	161,180	6,405,984	890,119	5,418,181	36,499	61,185	-61.3
October	8,717,204	1,120,599	7,569,862	4,562	22,181	4,714,108	629,150	4,063,420	3,047	18,491	-45.9
November	1,840,268	893,671	943,079	1231	2,287	465,415	236,384	226,466	271	2,294	-74.7
December	1,701,115	1,096,456	602,628	647	1,384	291,830	214,900	76,152			-82.8

(1) For reasons of statistical confidentiality regarding the protection of the identity of the surveyed units, data on tourist campsites are not broken down by residents and non-residents for the reference months March and December 2020.

(2) During the reference months April and May 2020 no arrivals and nights spent were recorded for tourist campsites, as they are defined in Regulation (EE) 692/2011 governing the survey.

Graph 2. Arrivals and nights spent in hotels, similar establishments and tourist campsites, by month, 2019 and 2020



Graph 3. Arrivals and nights spent by residents and non-residents in hotels, similar establishments and tourist campsites, 2020

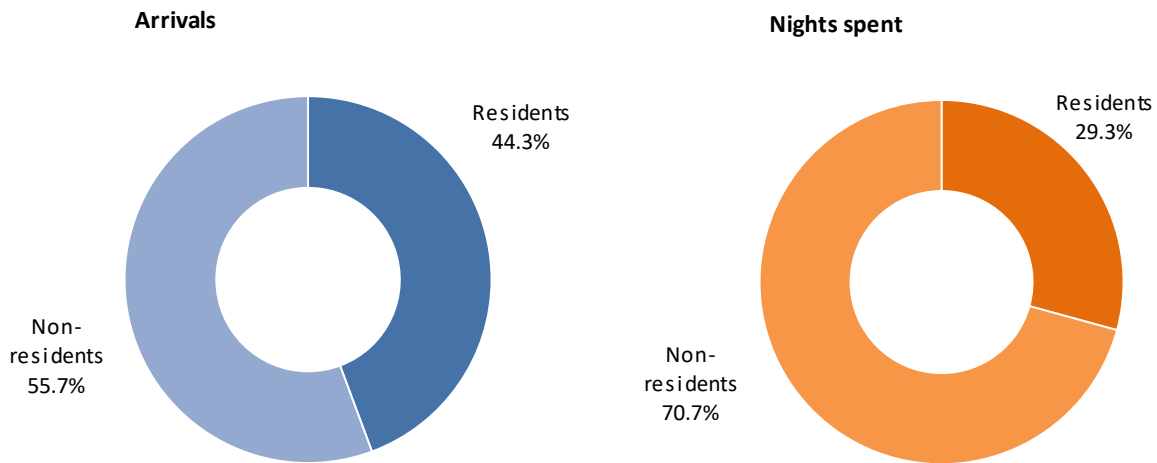


Table 3. Occupancy rate of bed-places in hotels and similar establishments, by month, 2019 and 2020

	Occupancy of bed-places %	
	2019	2020
Annual occupancy	48.7	29.6
January	16.8	24.1
February	18.4	27.6
March	21.5	9.0
April	26.8	16.8
May	45.9	22.0
June	65.0	7.6
July	72.9	30.1
August	76.0	51.5
September	63.5	37.9
October	35.5	32.3
November	16.9	8.7
December	18.7	6.5

Graph 4. Occupancy rate of bed-places in hotels and similar establishments, by month, 2019 and 2020

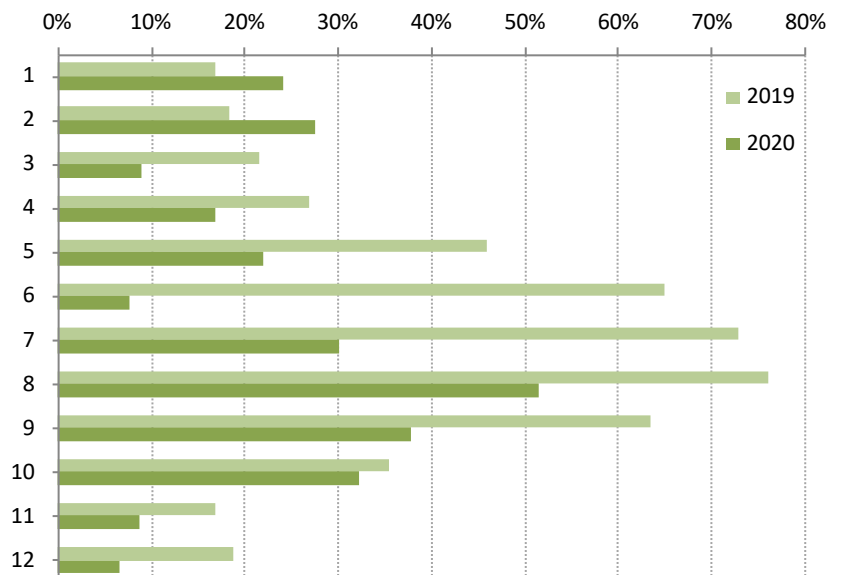


Table 4. Arrivals at hotels, similar establishments and tourist campsites, by NUTS 2 Region, 2019 and 2020

	2019				2020				Change % of total 2020/2019
	Total	Hotels and similar establishments	Tourist campsites	Percentage % of total	Total	Hotels and similar establishments	Tourist campsites	Percentage % of total	
Total	27,539,434	27,063,766	475,668	100.0	8,418,434	8,209,962	208,472	100.0	-69.4
Anatoliki Makedonia, Thraki	754,255	720,197	34,058	2.7	256,361	244,831	11,530	3.0	-66.0
Kentriki Makedonia	3,227,544	3,092,167	135,377	11.7	1,039,988	964,095	75,893	12.4	-67.8
Dytiki Makedonia ⁽¹⁾	152,498	152,498		0.6	62,178	62,178		0.7	-59.2
Ipeiros	633,486	611,459	22,027	2.3	276,024	270,073	5,951	3.3	-56.4
Thessalia	1,174,990	1,145,714	29,276	4.3	425,503	412,312	13,191	5.1	-63.8
Stereia Ellada	839,019	817,403	21,616	3.0	320,627	309,064	11,563	3.8	-61.8
Ionia Nisia	2,315,832	2,290,210	25,622	8.4	635,042	627,428	7,614	7.5	-72.6
Dytiki Ellada	736,800	704,592	32,208	2.7	285,019	278,112	6,907	3.4	-61.3
Peloponnisos	1,581,151	1,492,741	88,410	5.7	647,034	602,434	44,600	7.7	-59.1
Attiki	4,858,779	4,844,993	13,786	17.6	1,333,619	1,331,720	1,899	15.8	-72.6
Voreio Aigaio ⁽²⁾	401,790	401,790		1.5	93,598	93,598		1.1	-76.7
Notio Aigaio ⁽²⁾	5,815,159	5,756,216	58,943	21.1	1,626,975	1,603,500	23,475	19.3	-72.0
Kriti	5,048,131	5,033,786	14,345	18.3	1,416,466	1,410,617	5,849	16.8	-71.9

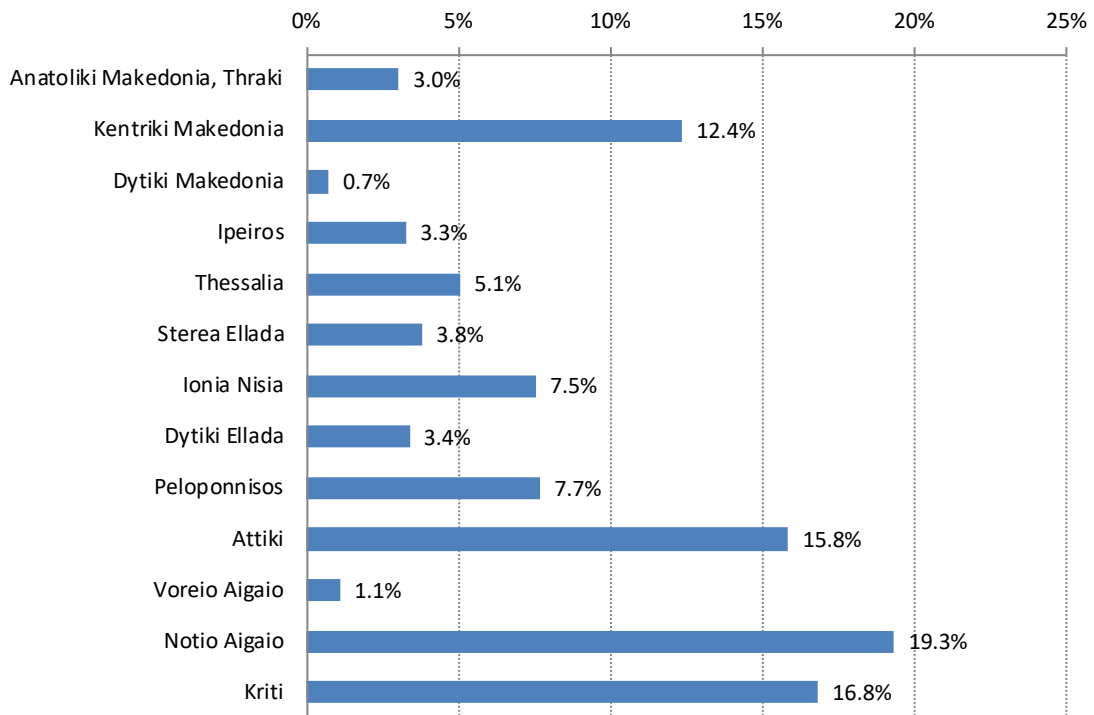
Table 5. Nights spent in hotels, similar establishments and tourist campsites, by NUTS 2 Region, 2019 and 2020

	2019				2020				Change % of total 2020/2019
	Total	Hotels and similar establishments	Tourist campsites	Percentage % of total	Total ¹⁾	Hotels and similar establishments	Tourist campsites	Percentage % of total	
Total	111,316,903	109,206,980	2,109,923	100.0	31,275,281	30,376,164	899,117	100.0	-71.9
Anatoliki Makedonia, Thraki	2,316,806	2,152,142	164,664	2.1	860,926	791,918	69,008	2.8	-62.8
Kentriki Makedonia	11,673,863	10,809,343	864,520	10.5	3,166,641	2,773,076	393,565	10.1	-72.9
Dytiki Makedonia ⁽¹⁾	312,803	312,803		0.3	140,050	140,050		0.4	-55.2
Ipeiros	1,634,104	1,558,985	75,119	1.5	663,154	638,628	24,526	2.1	-59.4
Thessalia	2,763,100	2,661,626	101,474	2.5	981,445	933,793	47,652	3.1	-64.5
Stereia Ellada	2,234,274	2,163,593	70,681	2.0	847,954	799,661	48,293	2.7	-62.0
Ionia Nisia	12,917,772	12,790,429	127,343	11.6	3,373,524	3,332,132	41,392	10.8	-73.9
Dytiki Ellada	2,107,757	1,999,273	108,484	1.9	749,918	727,800	22,118	2.4	-64.4
Peloponnisos	4,264,205	3,936,868	327,337	3.8	1,633,387	1,458,007	175,380	5.2	-61.7
Attiki	10,291,896	10,260,847	31,049	9.2	2,973,264	2,969,501	3,763	9.5	-71.1
Voreio Aigaio ⁽²⁾	2,005,706	2,005,706		1.8	498,509	498,509		1.6	-75.1
Notio Aigaio ⁽²⁾	30,787,732	30,592,824	194,908	27.7	8,287,404	8,229,958	57,446	26.5	-73.1
Kriti	28,006,885	27,962,541	44,344	25.2	7,099,105	7,083,131	15,974	22.7	-74.7

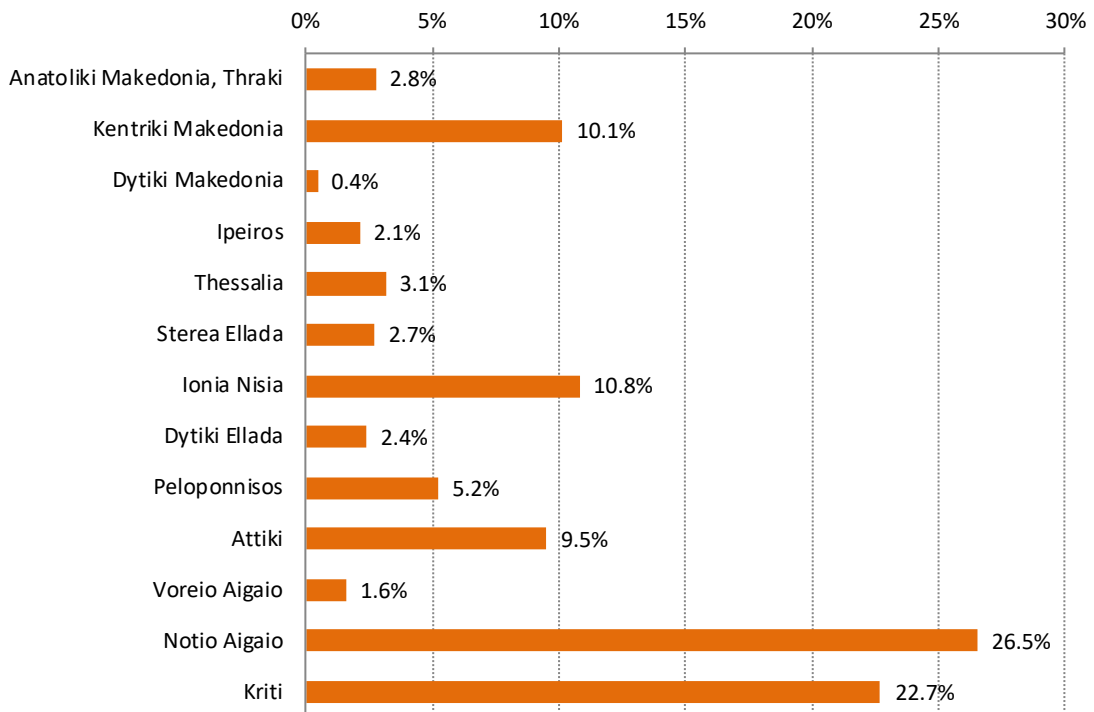
(1) The arrivals and nights spent refer to hotels, similar establishments and tourist campsites, which are registered to the Hellenic Chamber of Hotels. For the Region of Dytiki Makedonia there are not tourist campsites registered to the Hellenic Chamber of Hotels.

(2) For reasons of statistical confidentiality regarding the protection of the identity of the surveyed units, data on tourist campsites in the Region of Voreio Aigaio have been included in the relevant data for the Region of Notio Aigaio.

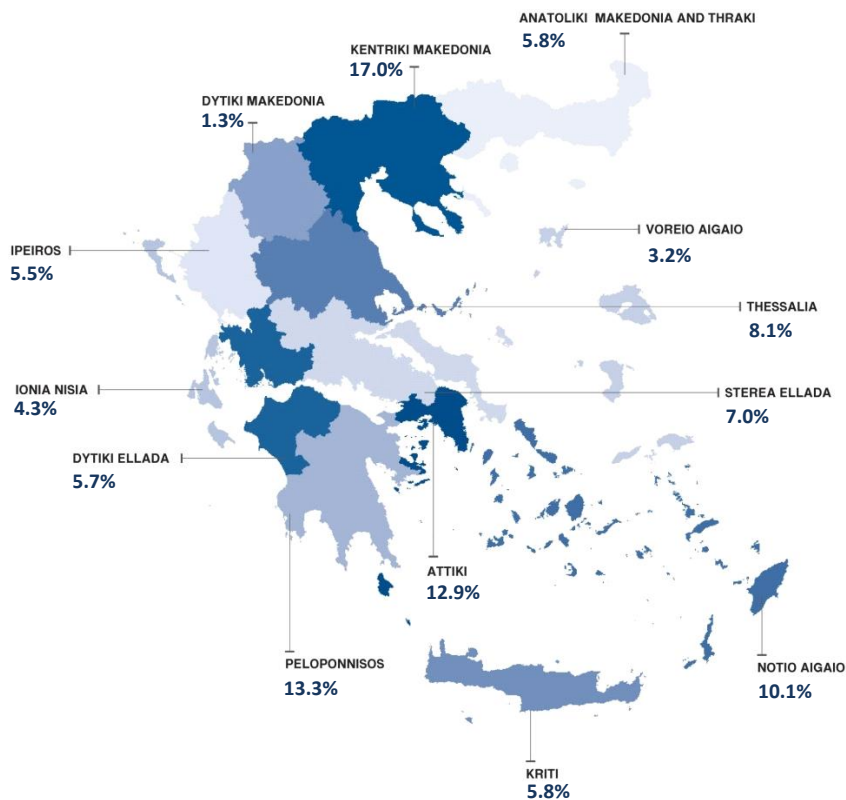
Graph 5. Percentage distribution of arrivals at hotels, similar establishments and tourist campsites, by NUTS 2 Region, 2020



Graph 6. Percentage distribution of nights spent in hotels, similar establishments and tourist campsites, by NUTS 2 Region, 2020



Graph 7. Percentage distribution of nights spent by residents in hotels, similar establishments and tourist campsites, by NUTS 2 Region, 2020



Graph 8. Percentage distribution of nights spent by non-residents in hotels, similar establishments and tourist campsites, by NUTS2 Regions, 2020

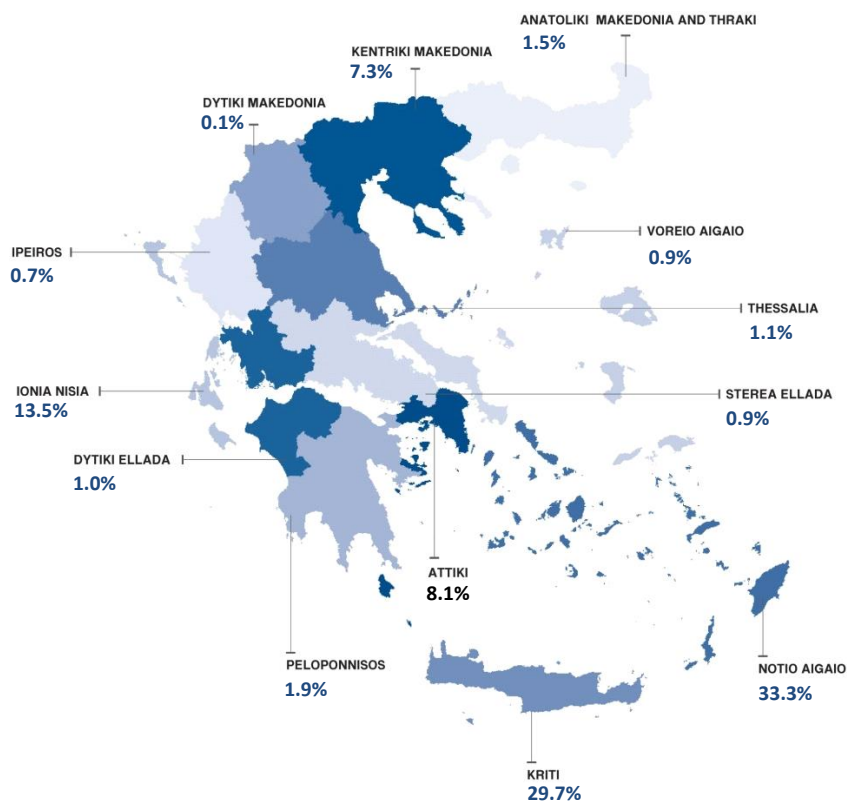


Table 6. Occupancy rate of bed-places in hotels and similar establishments, by NUTS 2 Region, 2019 and 2020

	Occupancy rate of bed-places %	
	2019	2020
Annual occupancy	48.7	29.6
Anatoliki Makedonia, Thraki	34.2	19.3
Kentriki Makedonia	43.9	22.8
Dytiki Makedonia	15.3	12.8
Ipeiros	29.8	20.6
Thessalia	31.9	20.6
Stereia Ellada	26.8	18.4
Ionia Nisia	57.3	41.5
Dytiki Ellada	33.0	22.7
Peloponnisos	31.8	21.8
Attiki	48.5	22.8
Voreio Aigaio	35.0	20.1
Notio Aigaio	57.7	40.1
Kriti	57.2	36.3

Graph 9. Occupancy rate of bed-places in hotels and similar establishments, by NUTS 2 Region, 2019 and 2020

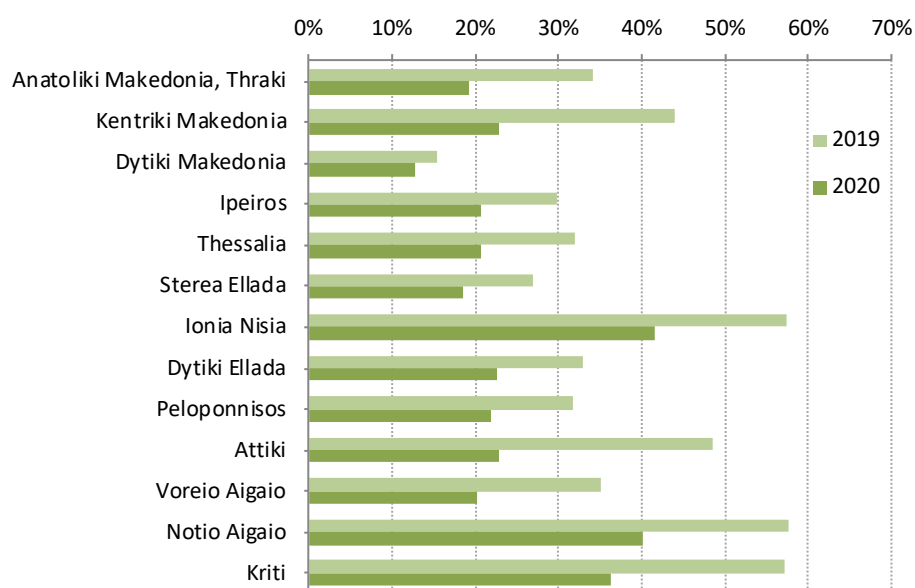


Table 7. Arrivals of non-residents at hotels, similar establishments and tourist campsites, by country of residence, 2019 and 2020

	2019				2020				Change % of total 2020/2019
	Total	Hotels and similar establishments	Tourist campsites	Percentage % of total	Total	Hotels and similar establishments	Tourist campsites	Percentage % of total	
Total	20,008,624	19,694,349	314,275	100.0	4,686,054	4,612,782	73,272	100.0	-76.6
Europe	15,976,471	15,688,063	288,408	79.8	4,295,186	4,223,698	71,488	91.7	-73.1
European Union	10,864,469	10,612,282	252,187	54.3	3,208,119	3,143,441	64,678	68.5	-70.5
Austria	291,240	277,848	13,392	1.5	74,273	71,530	2,743	1.6	-74.5
Belgium	388,050	383,261	4,789	1.9	102,332	101,501	831	2.2	-73.6
Bulgaria	328,539	292,429	36,110	1.6	86,307	70,387	15,920	1.8	-73.7
France	1,547,776	1,507,261	40,515	7.7	552,975	544,563	8,412	11.8	-64.3
Germany	2,775,485	2,710,633	64,852	13.9	1,148,860	1,128,898	19,962	24.5	-58.6
Denmark	342,335	340,374	1,961	1.7	114,000	113,737	263	2.4	-66.7
Estonia	33,342	33,169	173	0.2	8,533	8,483	50	0.2	-74.4
Ireland	84,626	83,389	1,237	0.4	27,898	27,691	207	0.6	-67.0
Spain	304,438	300,252	4,186	1.5	51,722	51,066	656	1.1	-83.0
Italy	940,438	909,692	30,746	4.7	155,741	150,151	5,590	3.3	-83.4
Croatia	25,727	25,586	141	0.1	4,274	4,235	39	0.1	-83.4
Cyprus	228,048	227,544	504	1.1	55,637	55,326	311	1.2	-75.6
Latvia	30,241	30,160	81	0.2	7,623	7,622	1	0.2	-74.8
Lithuania	52,219	52,028	191	0.3	15,325	15,286	39	0.3	-70.7
Luxembourg	28,463	28,315	148	0.1	8,469	8,421	48	0.2	-70.2
Malta	8,436	8,399	37	0.0	1,860	1,856	4	0.0	-78.0
Netherlands	749,511	726,621	22,890	3.7	183,512	180,721	2,791	3.9	-75.5
Hungary	99,916	97,197	2,719	0.5	20,649	20,356	293	0.4	-79.3
Poland	754,342	745,700	8,642	3.8	263,698	262,554	1,144	5.6	-65.0
Portugal	48,916	48,348	568	0.2	10,828	10,789	39	0.2	-77.9
Romania	465,556	457,864	7,692	2.3	146,173	142,625	3,548	3.1	-68.6
Slovakia	93,862	93,037	825	0.5	15,015	14,858	157	0.3	-84.0
Slovenia	46,634	42,390	4,244	0.2	14,397	13,849	548	0.3	-69.1
Sweden	608,307	607,046	1,261	3.0	40,576	40,434	142	0.9	-93.3
Czechia	316,539	312,534	4,005	1.6	81,533	80,652	881	1.7	-74.2
Finland	271,483	271,205	278	1.4	15,909	15,850	59	0.3	-94.1
Total of other European countries	5,112,002	5,075,781	36,221	25.5	1,087,067	1,080,257	6,810	23.2	-78.7
Iceland	11,817	11,775	42	0.1	1,274	1,270	4	0.0	-89.2
Norway	356,102	355,802	300	1.8	11,165	11,104	61	0.2	-96.9
Switzerland (incl. Liechtenstein)	284,544	274,777	9,767	1.4	130,276	126,578	3,698	2.8	-54.2
United Kingdom	2,752,734	2,745,638	7,096	13.8	795,240	793,196	2,044	17.0	-71.1
Russia	854,779	853,244	1,535	4.3	30,351	30,287	64	0.6	-96.4
Serbia	138,353	136,040	2,313	0.7	6,222	6,184	38	0.1	-95.5
Turkey	269,323	265,685	3,638	1.3	26,083	25,955	128	0.6	-90.3
Other European countries	444,350	432,820	11,530	2.2	86,456	85,683	773	1.8	-80.5
Africa	102,213	101,658	555	0.5	22,738	22,638	100	0.5	-77.8
America	1,905,824	1,895,839	9,985	9.5	135,871	134,936	935	2.9	-92.9
North America	1,642,114	1,636,230	5,884	8.2	112,746	112,416	330	2.4	-93.1
USA	1,409,671	1,406,790	2,881	7.0	95,558	95,371	187	2.0	-93.2
Canada	232,443	229,440	3,003	1.2	17,188	17,045	143	0.4	-92.6
South and Central America	263,710	259,609	4,101	1.3	23,125	22,520	605	0.5	-91.2
Asia	1,646,011	1,644,081	1,930	8.2	208,457	208,118	339	4.4	-87.3
Japan	101,819	101,659	160	0.5	9,390	9,379	11	0.2	-90.8
People's republic of China	400,807	400,632	175	2.0	24,531	24,494	37	0.5	-93.9
Other Asian countries	1,143,385	1,141,790	1,595	5.7	174,536	174,245	291	3.7	-84.7
Oceania	353,224	339,848	13,376	1.8	15,630	15,220	410	0.3	-95.6
Australia	327,823	315,876	11,947	1.6	12,863	12,570	293	0.3	-96.1
New Zealand and other Oceanian territories	25,401	23,972	1,429	0.1	2,767	2,650	117	0.1	-89.1
Not specified	24,881	24,860	21	0.1	8,172	8,172	0	0.2	-67.2

NOTE: The United Kingdom is now considered a non-EU country and therefore in order to ensure the comparability of statistics over time, the time series has been recalculated so that comparisons are consistent at EU level 27 Member States.

Table 8. Nights spent by non-residents in hotels, similar establishments and tourist campsites, by country of residence, 2019 and 2020

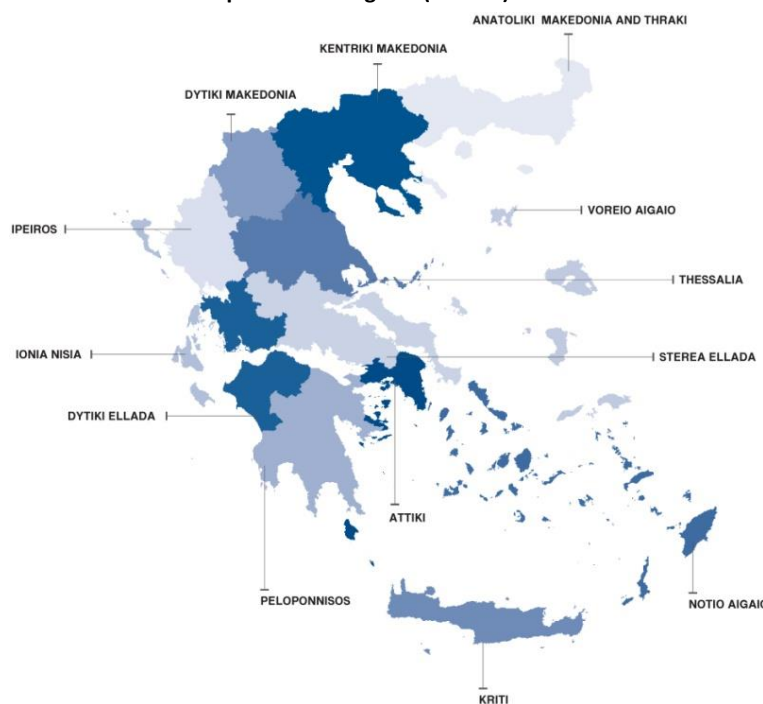
	2019				2020				Change % of total 2020/2019
	Total	Hotels and similar establishments	Tourist campsites	Percentage % of total	Total	Hotels and similar establishments	Tourist campsites	Percentage % of total	
Total	93,574,287	92,405,320	1,168,967	100.0	22,127,038	21,820,571	306,467	100.0	-76.4
Europe	83,666,784	82,567,528	1,099,256	89.4	21,024,707	20,723,082	301,625	95.0	-74.9
European Union	55,369,215	54,440,705	928,510	59.2	15,803,124	15,526,527	276,597	71.4	-71.5
Austria	1,601,125	1,547,658	53,467	1.7	356,162	345,497	10,665	1.6	-77.8
Belgium	2,002,344	1,987,828	14,516	2.1	488,188	485,307	2,881	2.2	-75.6
Bulgaria	1,130,181	944,580	185,601	1.2	338,097	239,417	98,680	1.5	-70.1
France	6,081,668	5,974,954	106,714	6.5	1,911,703	1,891,897	19,806	8.6	-68.6
Germany	16,929,381	16,693,103	236,278	18.1	6,772,840	6,700,019	72,821	30.6	-60.0
Denmark	2,058,265	2,048,597	9,668	2.2	603,429	602,336	1,093	2.7	-70.7
Estonia	180,317	179,864	453	0.2	50,845	50,758	87	0.2	-71.8
Ireland	344,822	340,481	4,341	0.4	99,763	99,146	617	0.5	-71.1
Spain	682,627	672,095	10,532	0.7	135,747	134,222	1,525	0.6	-80.1
Italy	3,803,003	3,691,196	111,807	4.1	577,271	552,896	24,375	2.6	-84.8
Croatia	77,173	76,665	508	0.1	17,792	17,407	385	0.1	-76.9
Cyprus	621,178	619,432	1,746	0.7	146,381	145,251	1,130	0.7	-76.4
Latvia	162,689	162,459	230	0.2	43,512	43,509	3	0.2	-73.3
Lithuania	282,008	281,555	453	0.3	86,158	86,077	81	0.4	-69.4
Luxembourg	142,395	141,542	853	0.2	40,054	39,836	218	0.2	-71.9
Malta	29,497	29,397	100	0.0	5,969	5,935	34	0.0	-79.8
Netherlands	4,299,899	4,226,076	73,823	4.6	986,922	976,489	10,433	4.5	-77.0
Hungary	523,261	511,264	11,997	0.6	104,425	102,880	1,545	0.5	-80.0
Poland	4,319,467	4,290,023	29,444	4.6	1,455,142	1,450,458	4,684	6.6	-66.3
Portugal	166,994	165,106	1,888	0.2	41,943	41,804	139	0.2	-74.9
Romania	1,910,834	1,874,619	36,215	2.0	618,123	599,267	18,856	2.8	-67.7
Slovakia	602,304	598,336	3,968	0.6	80,354	79,831	523	0.4	-86.7
Slovenia	208,389	194,311	14,078	0.2	72,648	70,853	1,795	0.3	-65.1
Sweden	3,552,092	3,547,753	4,339	3.8	190,112	189,597	515	0.9	-94.6
Czechia	2,015,129	2,000,586	14,543	2.2	493,834	490,280	3,554	2.2	-75.5
Finland	1,642,173	1,641,225	948	1.8	85,710	85,558	152	0.4	-94.8
Total of other European countries	28,297,569	28,126,823	170,746	30.2	5,221,583	5,196,555	25,028	23.6	-81.5
Iceland	55,519	55,400	119	0.1	3,694	3,688	6	0.0	-93.3
Norway	2,248,859	2,247,804	1,055	2.4	49,865	49,575	290	0.2	-97.8
Switzerland (incl. Liechtenstein)	1,341,393	1,313,709	27,684	1.4	576,612	564,536	12,076	2.6	-57.0
United Kingdom	15,937,161	15,910,756	26,405	17.0	4,145,676	4,136,910	8,766	18.7	-74.0
Russia	5,548,242	5,541,294	6,948	5.9	117,526	117,296	230	0.5	-97.9
Serbia	865,646	840,042	25,604	0.9	22,849	22,465	384	0.1	-97.4
Turkey	537,206	528,193	9,013	0.6	61,693	61,395	298	0.3	-88.5
Other European countries	1,763,543	1,689,625	73,918	1.9	243,668	240,690	2,978	1.1	-86.2
Africa	367,966	365,662	2,304	0.4	70,526	70,279	247	0.3	-80.8
America	4,420,764	4,392,944	27,820	4.7	373,049	370,488	2,561	1.7	-91.6
North America	3,791,969	3,775,401	16,568	4.1	305,877	304,870	1,007	1.4	-91.9
USA	3,236,315	3,228,994	7,321	3.5	262,152	261,693	459	1.2	-91.9
Canada	555,654	546,407	9,247	0.6	43,725	43,177	548	0.2	-92.1
South and Central America	628,795	617,543	11,252	0.7	67,172	65,618	1,554	0.3	-89.3
Asia	4,142,288	4,137,248	5,040	4.4	594,781	594,056	725	2.7	-85.6
Japan	190,878	190,477	401	0.2	18,140	18,094	46	0.1	-90.5
People's republic of China	674,386	673,952	434	0.7	53,651	53,529	122	0.2	-92.0
Other Asian countries	3,277,024	3,272,819	4,205	3.5	522,990	522,433	557	2.4	-84.0
Oceania	880,074	845,576	34,498	0.9	44,791	43,482	1,309	0.2	-94.9
Australia	813,001	782,664	30,337	0.9	36,157	35,282	875	0.2	-95.6
New Zealand and other Oceanian territories	67,073	62,912	4,161	0.1	8,634	8,200	434	0.0	-87.1
Not specified	96,411	96,362	49	0.1	19,184	19,184	0	0.1	-80.1

NOTE: The United Kingdom is now considered a non-EU country and therefore in order to ensure the comparability of statistics over time, the time series has been recalculated so that comparisons are consistent at EU level 27 Member States.

EXPLANATORY NOTES

Arrivals and nights spent at hotels, similar establishments and tourist campsites	Data on arrivals and nights spent at hotels, similar establishments and tourist campsites are collected from a monthly census survey. Each establishment fills in a questionnaire, for every month that it is in operation. It is mandatory for all hotels, similar establishments and tourist campsites to participate in the survey.
Legal frame	The survey is conducted pursuant to Regulation (EE) 692/2011 of the European Parliament and of the Council.
Reference unit	Data refer to all establishments (hotels, similar establishments and tourist campsites) that are registered in the Hellenic Chamber of Hotels.
Reference period	January - December 2020 (Final data).
Coverage	The survey results refer to 100% of the total of the available bed-places.
Geographical classification	The geographical classification is based on <i>Nomenclature of Territorial Units for Statistics</i> .

Map of the 13 Regions (NUTS 2) of Greece



Definitions Resident: Every person, regardless of citizenship, that has resided in Greece for at least a year, or has arrived in Greece with the intention to reside in the country for at least 1 year.

Non-resident: Every person, regardless of citizenship, that is not considered to be resident.

Arrivals: The arrivals at the establishments are calculated for every person separately. The data refer to the total number of persons and not to the total number of rooms that were occupied. Only the persons that had at least one overnight stay at the establishment are counted.

Nights spent: The nights spent are calculated for every person separately. The data refer to the total number of nights spent by every person and not to the total number of nights spent in every room.

Occupancy of bed-places: The monthly occupancy of bed-places is calculated on the basis of the number of the bed-places, as reported by each establishment. The rate refers to the occupancy that was accomplished, as compared with the maximum occupancy that is expected according to the available bed-places. The occupancy of the period is the result of the average occupancy rates of every month of the period, weighted by the bed-places that were in operation for each month.

Methodology This is a census survey and is conducted on a monthly basis. The data are compiled through the collection and processing of the relevant data submitted, via a specific questionnaire, by hotels, similar establishments and tourist campsites for each month of operation. The questionnaires are mostly submitted electronically, via ELSTAT's electronic application "Xenios Zeus" or, alternatively, for establishments that this is not possible, in paper form.

The survey is based on the Statistical Register of hotels, similar establishments and tourist campsites, which is updated during the year, so that data refer to the actual number of accommodation establishments and campsites that are in operation.

Non-response to the survey is addressed as follows:

1. Regular reminders are sent out to the establishments that have not responded to the survey, for submitting data.

2. For the low percentage of establishments, which despite the reminders have not responded to the survey, supplementary administrative data are used, and statistical methods are applied for grossing-up of the results to the total of establishments.

Data collection during the pandemic period of coronavirus disease 2019 (COVID-19)

For the period of 15 March to 15 June 2020 the operation of tourist accommodation establishments that operate on a seasonal basis was suspended in the framework of the containment measures against the Covid-19 pandemic, whereas the operation of tourist accommodation establishments that operate on a continuous basis was suspended for the period from 23 March to 31 May 2020.

It is noted that during this period only a few establishments were in operation for special purposes such as the accommodation of people in quarantine, public servants that were transferred for special reasons, etc. In such cases arrivals and nights spent were not recorded, as they are not in the scope of the survey (Regulation EU 692/2011).

For the compilation of the 2020 final data of arrivals and nights spent in hotels, similar establishments and tourist campsites, both data collected by the survey and administrative data sources were used. Specifically,

- a. the establishments of the Register of hotels and tourist campsites, were identified on the basis of administrative data for each reference period.
- b. the survey was conducted on the afore-mentioned establishments
- c. for the low percentage of accommodation establishments that were in operation but did not respond to the survey, statistical methods were used for addressing non-response by grossing-up the collected data to the 100% of the total of the available bed-places.

References

More information at a more detailed geographical level of the survey results on hotels, similar establishments and tourist campsites is available on the website of ELSTAT at: <http://www.statistics.gr/en/statistics/-/publication/STO12/>