



ISSUING OF MOTOR VEHICLE LICENSES: MARCH 2023

The Hellenic Statistical Authority announces that in March 2023, 22,682 road motor cars (both new and used from abroad) were put into circulation for the first time, recording a 28.4% increase compared with the corresponding month of 2022 when the number of road motor cars was 17,661. In March 2022, a 5.6% increase had been observed in comparison with the corresponding month of 2021 (Table 1, Graphs 1,2,3,5). A total number of 14,408 new cars were put into circulation in March 2023 compared with 9,255 in March 2022, recording a 55.7% increase.

The new motorcycles over 50cc (both new and used from abroad) that were put into circulation for the first time in March 2023 amounted to 5,839, against 4,056 in 2022, thus recording a 44.0% increase. In March 2022, a 17.8% increase had been observed in comparison with the corresponding month of 2021 (Table 1, Graph 4). Out of the above motorcycles 5,520 were new, while the corresponding figure in March 2022 was 3,724, recording a 48.2% increase.

During the period January - March 2023, 61,044 road motor cars (both new and used from abroad) were put into circulation for the first time, representing an increase of 21.5% compared to the corresponding period of 2022 when the number of road motor cars was 50,226. During the period January - March 2022 an increase of 8.8% had been observed in comparison with the corresponding period of 2021 (Table 3, Graphs 6,7). Out of the above number of road motor cars that were put into circulation, from January to March 2023, 36,870 were new, while the corresponding number during the respective period of 2022 was 24,612, recording an increase of 49.8%.

During the period January - March 2023 the circulation of new motorcycles over 50cc (both new and used from abroad) amounted to 13,071 against 9,958 in 2022, thus representing a 31.3% increase. An increase of 25.8% had been observed during the period January - March 2022 in comparison with the corresponding period of 2021 (Table 3, Graphs 6,7). A total number of 12,250 new motorcycles were put into circulation, from January to March 2023, compared with 9,001 during the corresponding period of 2021, recording a 36.1% increase.

Information on methodological issues:

Sectoral Statistics Division

Transport Statistics Section

Pota Tzortzi, Konstantinos Menexes

Tel: +30 213 135 2187, +30 213 135 3055

e-mail: p.tzortzi@statistics.gr, k.menexes@statistics.gr

Information for data provision:

Tel: +30 213 135 2022

e-mail: data.dissem@statistics.gr

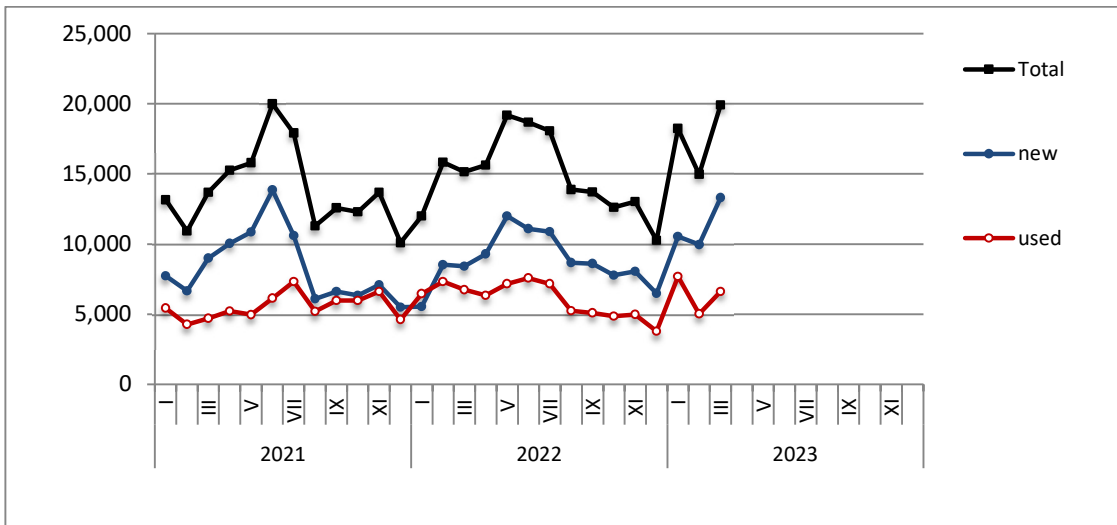
Table 1. Road motor vehicles, both new and used, put into circulation for the first time in Greece: March 2021 - 2023

Category of Road Motor Vehicles	March									Change (%)					
	2021			2022			2023			2022/2021			2023/2022		
	Total	New	Used	Total	New	Used	Total	New	Used	Total	New	Used	Total	New	Used
Greece, total															
Road Motor Vehicles,total	20,175	13,189	6,986	21,717	12,979	8,738	28,521	19,928	8,593	7.6%	-1.6%	25.1%	31.3%	53.5%	-1.7%
1. Road motor cars	16,731	10,017	6,714	17,661	9,255	8,406	22,682	14,408	8,274	5.6%	-7.6%	25.2%	28.4%	55.7%	-1.6%
Passenger Cars	13,674	8,983	4,691	15,137	8,413	6,724	19,888	13,284	6,604	10.7%	-6.3%	43.3%	31.4%	57.9%	-1.8%
Buses	106	19	87	109	22	87	71	14	57	2.8%	15.8%	0.0%	-34.9%	-36.4%	-34.5%
Lorries	2,951	1,015	1,936	2,415	820	1,595	2,723	1,110	1,613	-18.2%	-19.2%	-17.6%	12.8%	35.4%	1.1%
2. Motorcycles > 50 cc	3,444	3,172	272	4,056	3,724	332	5,839	5,520	319	17.8%	17.4%	22.1%	44.0%	48.2%	-3.9%
Prefecture of Attica															
Road Motor Vehicles,total	11,174	8,403	2,771	11,720	8,283	3,437	16,482	12,950	3,532	4.9%	-1.4%	24.0%	40.6%	56.3%	2.8%
1. Road motor cars	9,370	6,662	2,708	9,680	6,326	3,354	13,563	10,136	3,427	3.3%	-5.0%	23.9%	40.1%	60.2%	2.2%
Passenger Cars	8,201	6,057	2,144	8,690	5,807	2,883	12,317	9,366	2,951	6.0%	-4.1%	34.5%	41.7%	61.3%	2.4%
Buses	18	7	11	41	7	34	31	9	22	127.8%	0.0%	209.1%	-24.4%	28.6%	-35.3%
Lorries	1,151	598	553	949	512	437	1,215	761	454	-17.5%	-14.4%	-21.0%	28.0%	48.6%	3.9%
2. Motorcycles > 50 cc	1,804	1,741	63	2,040	1,957	83	2,919	2,814	105	13.1%	12.4%	31.7%	43.1%	43.8%	26.5%

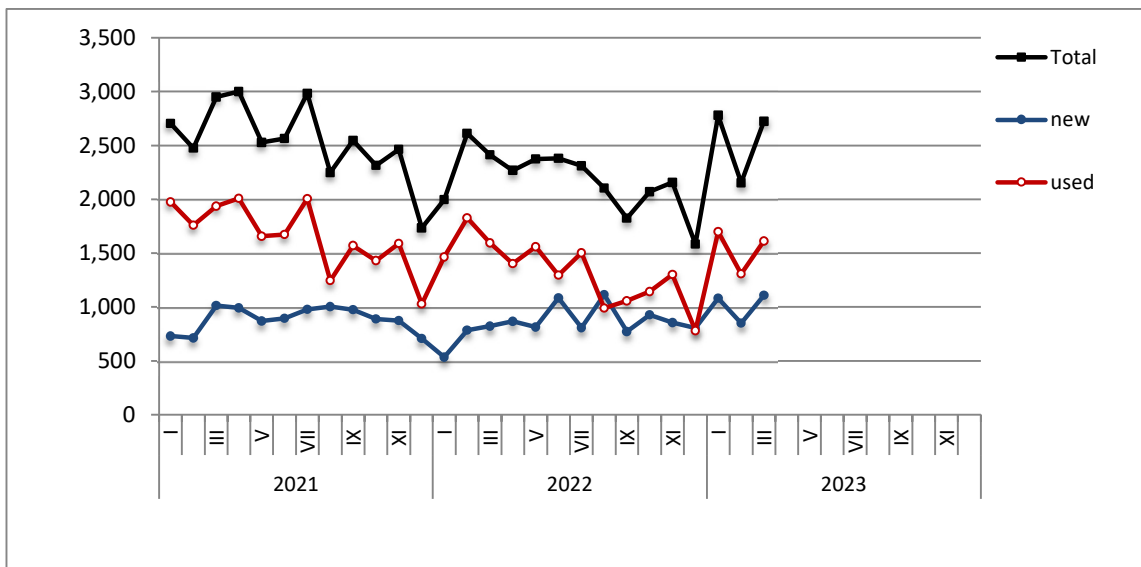
Table 2. Road motor vehicles, both new and used, put into circulation for the first time in Greece: April 2021 – March 2023

Category of Road Motor Vehicles	Average Apr. 2021 - Mar. 2022			Average Apr. 2022 - Mar. 2023			Change (%)		
	Average Apr. 2022 - Mar. 2023 / Average Apr. 2021 - Mar. 2022								
	Total	New	Used	Total	New	Used	Total	New	Used
Greece, total									
Road Motor Vehicles,total	21,121	13,036	8,085	23,247	15,569	7,678	10.1%	19.4%	-5.0%
1. Road motor cars	16,883	9,175	7,708	17,996	10,660	7,336	6.6%	16.2%	-4.8%
Passenger Cars	14,314	8,279	6,035	15,666	9,713	5,953	9.4%	17.3%	-1.4%
Buses	118	36	82	102	23	79	-13.6%	-36.1%	-3.7%
Lorries	2,451	860	1,591	2,228	924	1,304	-9.1%	7.4%	-18.0%
2. Motorcycles > 50 cc	4,238	3,861	377	5,251	4,909	342	23.9%	27.1%	-9.3%

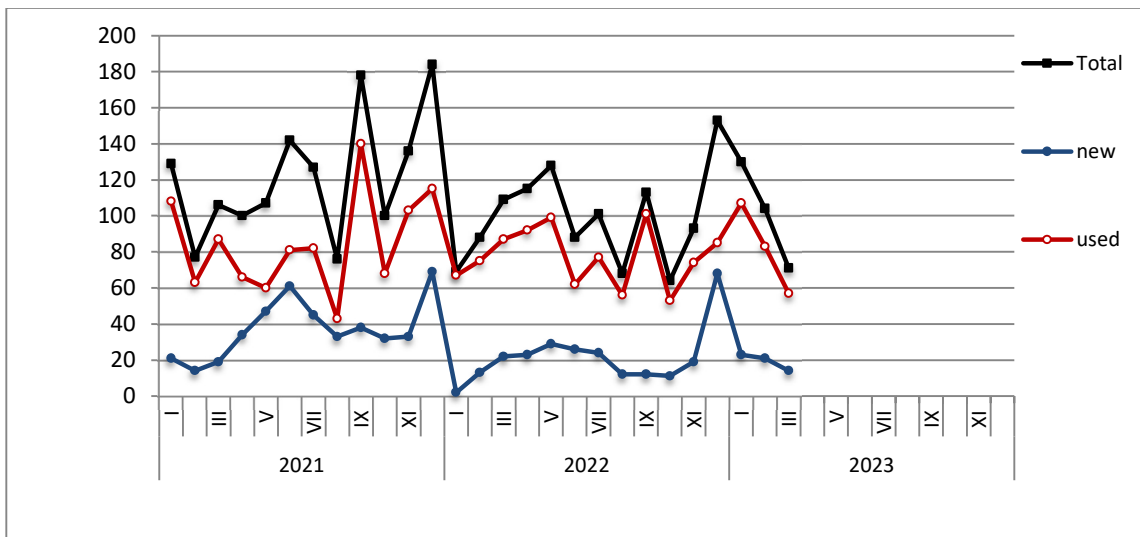
Graph 1: Passenger Cars (January 2021 – March 2023)



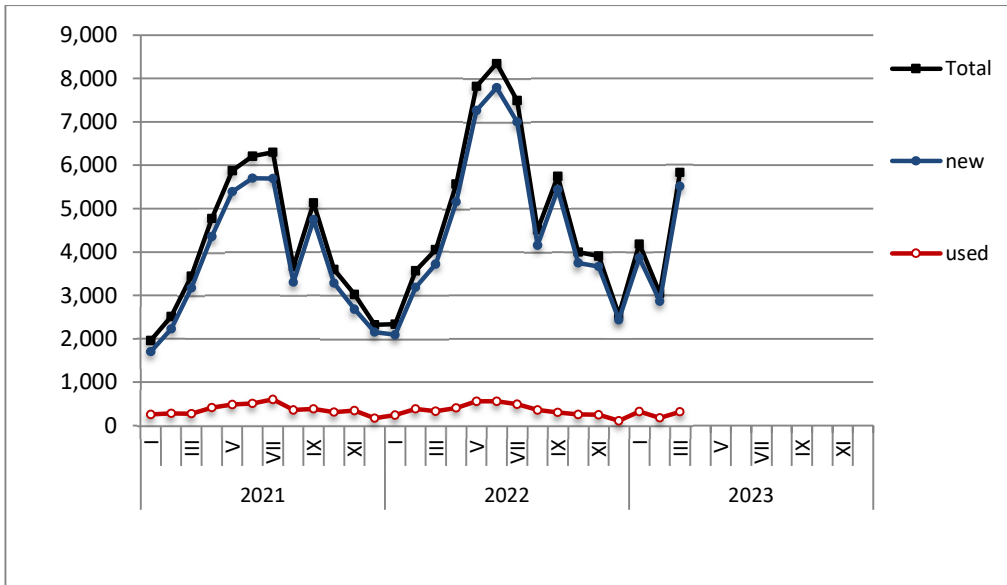
Graph 2: Lorries (January 2021 – March 2023)



Graph 3: Buses (January 2021 – March 2023)



Graph 4: Motorcycles (January 2021 – March 2023)



Graph 5: New Registrations of Motor Vehicles (March 2023)

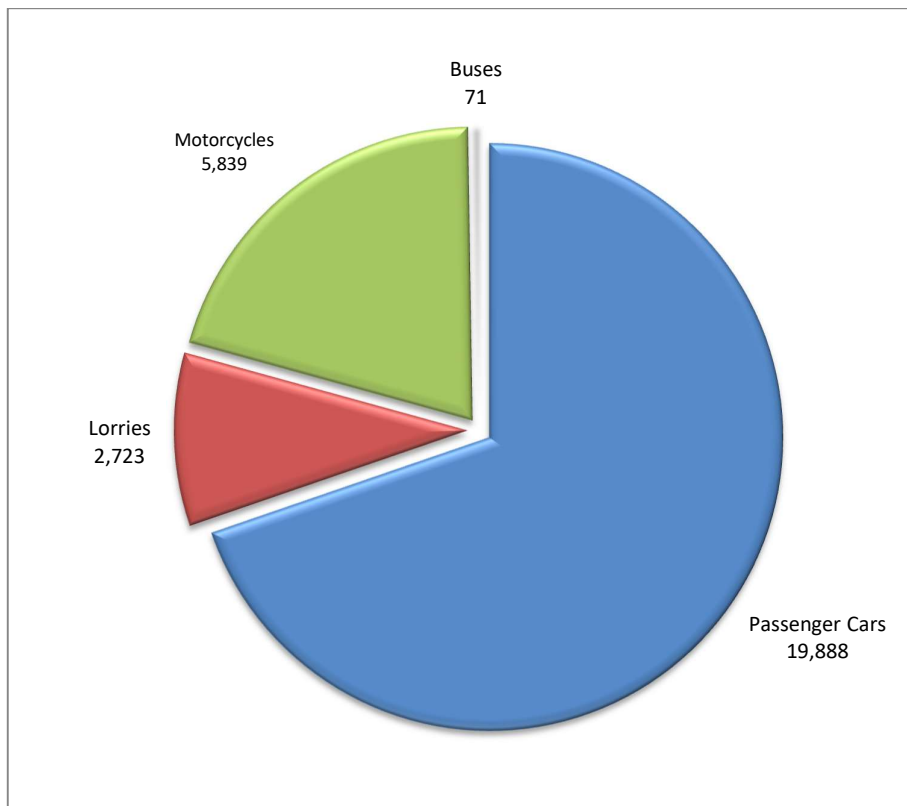
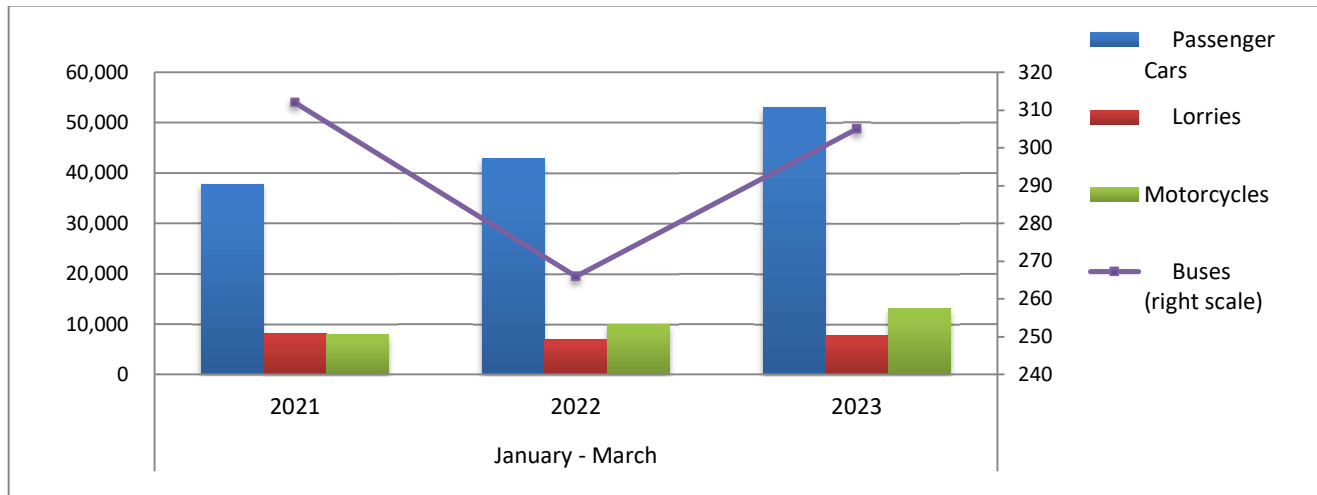


Table 3. Road motor vehicles, both new and used, put into circulation for the first time in Greece: January - March, years 2021 till 2023															
Category of Road Motor Vehicles	January - March									Change (%)					
	2021			2022			2023			2022/2021			2023/2022		
	Total	New	Used	Total	New	Used	Total	New	Used	Total	New	Used	Total	New	Used
Greece, total															
Road Motor Vehicles, total	54,093	32,983	21,110	60,184	33,613	26,571	74,115	49,120	24,995	11.3%	1.9%	25.9%	23.1%	46.1%	-5.9%
1. Road motor cars	46,178	25,874	20,304	50,226	24,612	25,614	61,044	36,870	24,174	8.8%	-4.9%	26.2%	21.5%	49.8%	-5.6%
Passenger Cars	37,738	23,364	14,374	42,934	22,437	20,497	53,080	33,772	19,308	13.8%	-4.0%	42.6%	23.6%	50.5%	-5.8%
Buses	312	54	258	266	37	229	305	58	247	-14.7%	-31.5%	-11.2%	14.7%	56.8%	7.9%
Lorries	8,128	2,456	5,672	7,026	2,138	4,888	7,659	3,040	4,619	-13.6%	-12.9%	-13.8%	9.0%	42.2%	-5.5%
2. Motorcycles > 50 cc	7,915	7,109	806	9,958	9,001	957	13,071	12,250	821	25.8%	26.6%	18.7%	31.3%	36.1%	-14.2%
Prefecture of Attica															
Road Motor Vehicles, total	28,989	21,161	7,828	31,651	21,371	10,280	42,433	32,270	10,163	9.2%	1.0%	31.3%	34.1%	51.0%	-1.1%
1. Road motor cars	24,552	16,951	7,601	26,438	16,494	9,944	35,596	25,704	9,892	7.7%	-2.7%	30.8%	34.6%	55.8%	-0.5%
Passenger Cars	21,546	15,542	6,004	23,664	15,170	8,494	32,155	23,682	8,473	9.8%	-2.4%	41.5%	35.9%	56.1%	-0.2%
Buses	74	27	47	104	15	89	156	41	115	40.5%	-44.4%	89.4%	50.0%	173.3%	29.2%
Lorries	2,932	1,382	1,550	2,670	1,309	1,361	3,285	1,981	1,304	-8.9%	-5.3%	-12.2%	23.0%	51.3%	-4.2%
2. Motorcycles > 50 cc	4,437	4,210	227	5,213	4,877	336	6,837	6,566	271	17.5%	15.8%	48.0%	31.2%	34.6%	-19.3%

Graph 6. New Motor Vehicles Circulation Licenses: January – March, years 2021 till 2023



Graph 7. New Registrations of Motor Vehicles: January – March 2023

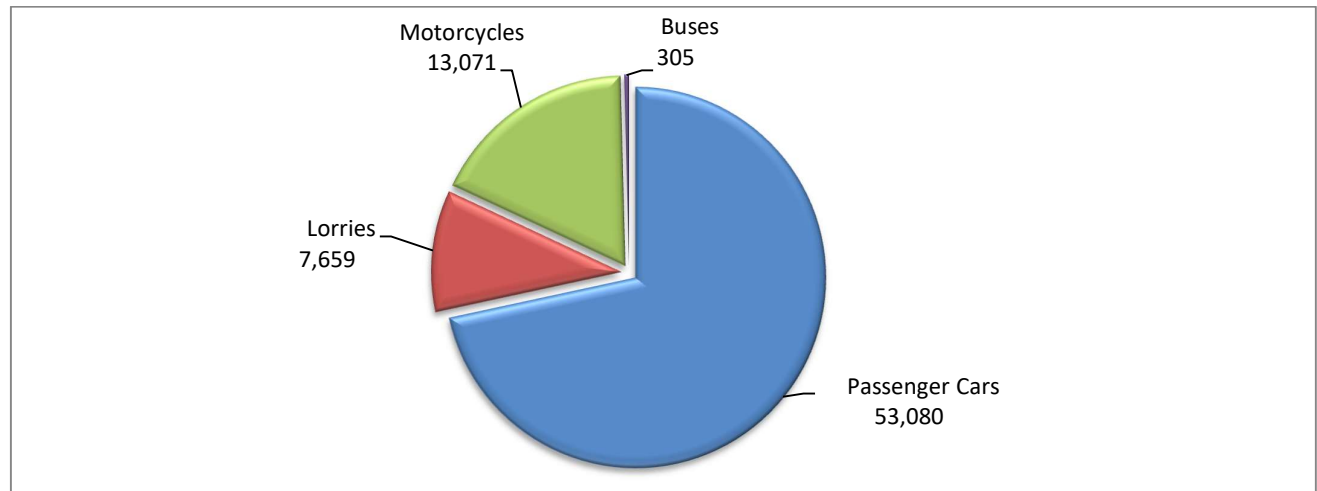


Table 4
Sales of new and used passenger cars by make: March 2023 and January - March 2023

Make	Passenger cars			
	March		January - March	
	new	used	new	used
ADRIA	-	4	-	5
ALFA ROMEO	48	49	164	166
ALPINA	-	-	1	-
ASTON MARTIN	-	-	-	1
AUDI	425	104	978	341
BENTLEY	-	-	1	1
BMW	590	178	1,309	524
BURSTNE	-	2	-	2
CADILLAC	-	-	-	1
CAPRON	-	1	1	4
CARTHAGO	-	-	-	1
CHAUSSON	-	-	1	-
CHEVROLET	-	19	-	72
CITROEN	284	249	783	732
CITROEN / DS	631	24	2,079	80
CUPRA	104	-	158	-
DACIA	400	182	843	517
DAIHATSU	-	2	-	3
DODGE	-	1	-	3
DS	129	5	304	9
FERRARI	-	2	-	2
FIAT	395	306	837	910
FORD	653	482	1,434	1,412
FIAT	-	-	-	1
GRUAU LAVAL	-	-	-	1
HOBBY	-	1	-	2
HONDA	18	52	49	141
HYMER	-	-	2	1
HYUNDAI	896	512	2,703	1,572
INFINITI	-	4	-	15
IVECO S.p.a/LAIKA CARAVANS SpA	-	-	-	1
JAGUAR	21	8	43	37
JEEP	197	32	601	90
KIA	595	135	1,411	378
KNAUS	-	3	-	8
LADA	-	-	-	1
LAMBORGHINI	-	2	-	2
LANCIA	1	2	1	14
LAND ROVER	35	58	136	158
LEAPMOTOR	-	-	1	-
LEXUS	17	4	41	13
LOTUS	1	1	2	2
MASERATI	6	2	10	10
MAZDA	81	38	225	96
MC LOUIS SPA	-	-	-	1
MERCEDES	438	519	852	1,274
MERCEDES ¹	-	-	1	-
MINI	198	60	365	178

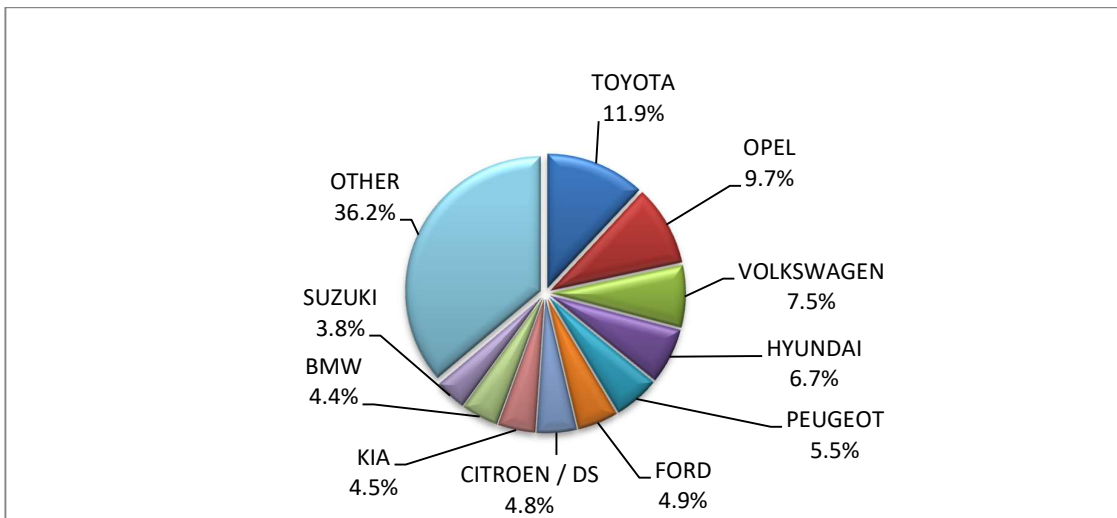
Table 4 (cont)
Sales of new and used passenger cars by make: March 2023 and January - March 2023

Make	Passenger cars			
	March		January - March	
	new	used	new	used
MITSUBISHI	1	101	3	275
MPM MOTORS	-	-	-	1
NISSAN	340	440	857	1,336
OPEL	1,285	448	3,501	1,385
PEUGEOT	737	378	2,997	1,126
PEUGEOT ²	-	-	1	-
PORSCHE	22	37	58	118
RANGE ROVER	11	4	30	12
RELIANT	-	-	-	1
RENAULT	459	747	1,086	2,141
RIMOR	-	1	-	1
SAAB	-	1	-	4
SEAT	264	77	588	186
SKODA	392	194	773	532
SMART	8	107	15	327
SUBARU	10	5	23	28
SUZUKI	506	147	1,338	431
TESLA	336	2	477	11
TOYOTA	1,586	525	3,992	1,563
TRIGANO CL, ROLLER TEAM, CHALLENGER, CHAUSSON	-	2	-	2
VOLKSWAGEN	997	326	2,204	993
VOLVO	166	19	492	53
ZHIDOU, ZD, ELARIS	1	-	1	-
TOTAL	13,284	6,604	33,772	19,308

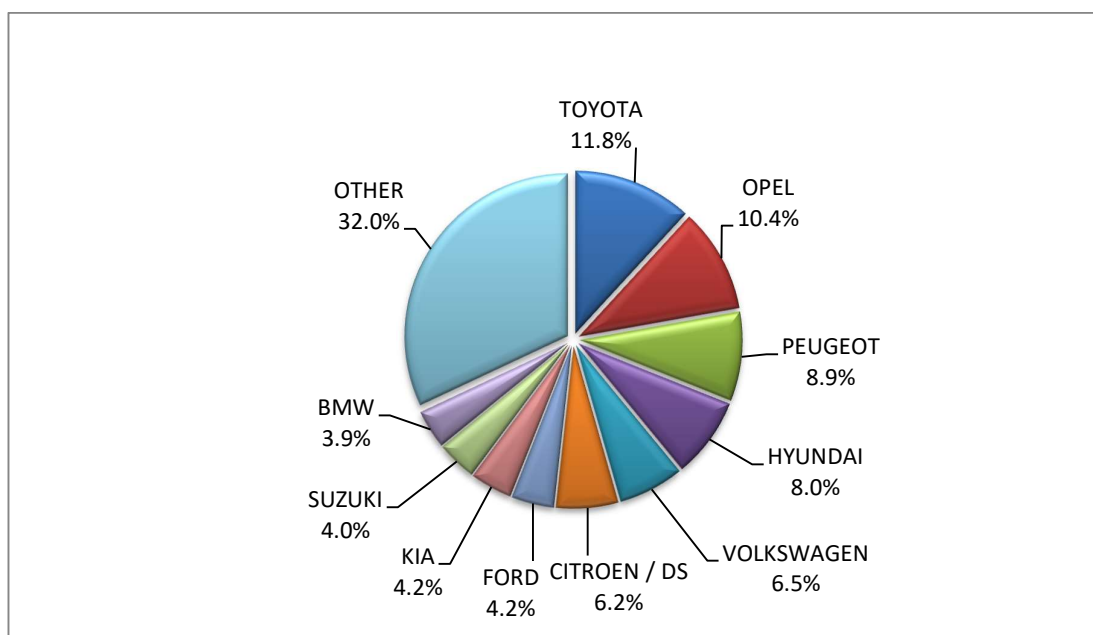
1 : With 2nd/3rd stage manufacturer in Greece.

2 : With 2nd/3rd stage manufacturer abroad.

Graph 8. Sales of new passenger cars by make (March 2023)



Graph 9. Sales of new passenger cars by make (January – March 2023)



**Table 5
Sales of new and used lorries by make: March 2023 and January - March 2023**

Make	Lorries			
	March		January - March	
	new	used	new	used
BMC Otomotiv Sanayi ve Ticaret A.Ş. ΗΦΑΙΣΤΟΣ ΣΤΕΦΑΝΟΣ	1	-	1	-
BYD	6	-	6	-
CHRYSLER	-	-	-	1
CITROEN	46	42	206	125
DACIA	-	11	-	18
DAF	-	48	-	136
DAF ¹	6	-	10	-
DAIHATSU	-	-	-	1
DENNIS EAGLE	-	-	-	1
DODGE	-	2	-	3
FCA US LLC	-	-	-	1
FIAT	151	127	361	362
FIAT DUCATO ¹	-	-	1	-
FIAT-IVECO	-	-	-	6
FORD	231	221	773	635
FORD ¹	-	-	4	-
GINAF	-	-	-	1
GOUPIL, MEGA, POLARIS, GEM	1	-	2	-
HYUNDAI	-	2	-	7
ISUZU	24	22	56	61
IVECO	1	35	5	116
IVECO ¹	6	-	23	-

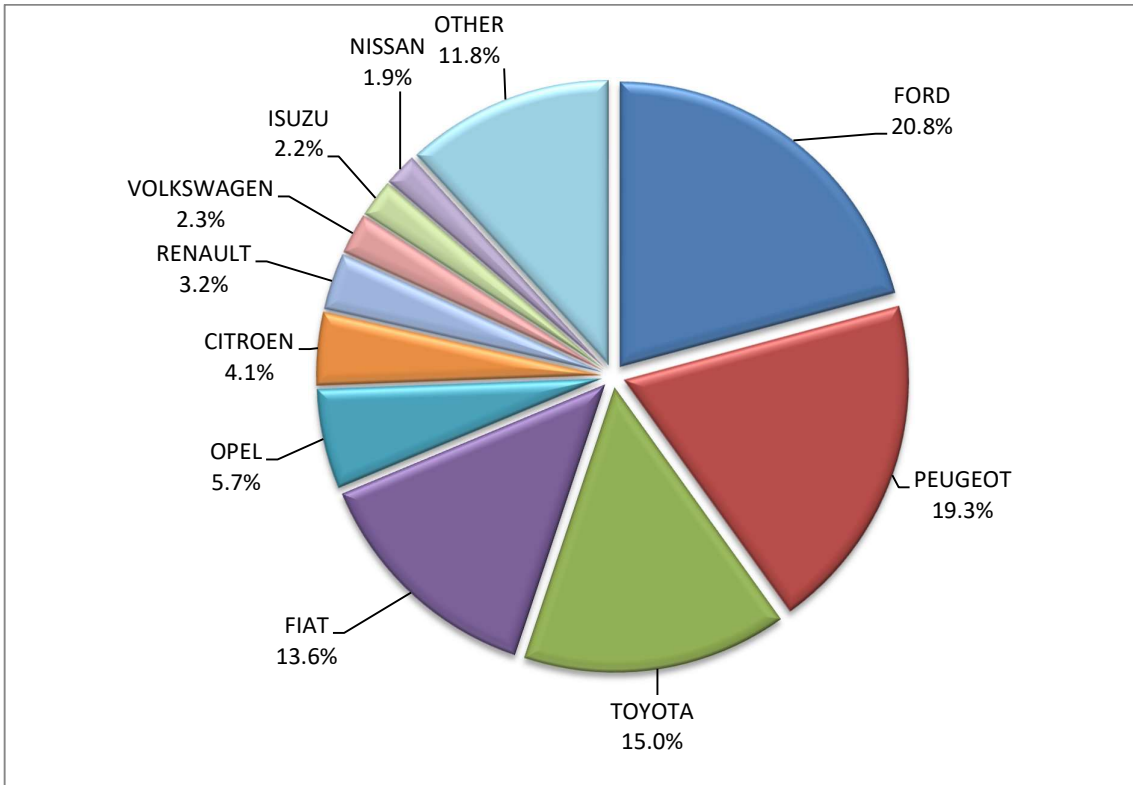
Table 5 (cont)
Sales of new and used lorries by make: March 2023 and January - March 2023

Make	Lorries			
	March		January - March	
	new	used	new	used
IVECO ²	3	-	3	-
IVECO MAGIRUS	-	-	-	2
IVECO MAGIRUS ¹	-	-	3	-
JEEP	5	2	19	2
LAND ROVER	-	-	1	1
LEVC	-	-	1	-
MAN	-	97	-	295
MAN ¹	4	-	5	1
MAXUS, LDV	3	-	6	-
MAZDA	-	-	-	1
MERCEDES	12	404	43	1,080
MERCEDES ¹	20	-	72	1
MITSUBISHI	2	36	5	102
MITSUBISHI ¹	5	-	23	-
NISSAN	21	46	41	156
OAF	-	-	-	2
OPEL	63	42	146	138
PEUGEOT	214	56	455	137
PEUGEOT ¹	-	-	22	-
PIAGGIO	3	7	8	15
PIAGGIO ¹	3	-	6	-
RENAULT	36	102	70	283
SAAB	-	-	-	1
SCANIA	1	85	8	272
SCANIA ¹	1	-	3	-
SEAT	-	1	-	5
SUZUKI	20	-	41	1
TECMEC	4	-	7	-
TOYOTA	167	23	453	82
VOLKSWAGEN	26	72	120	180
VOLVO	18	130	22	388
VOLVO ¹	6	-	9	-
TOTAL	1,110	1,613	3,040	4,619

1 : With 2nd/3rd stage manufacturer in Greece.

2 : With 2nd/3rd stage manufacturer abroad.

Graph 10. Sales of new lorries by make (March 2023)



Graph 11. Sales of new lorries by make (January – March 2023)

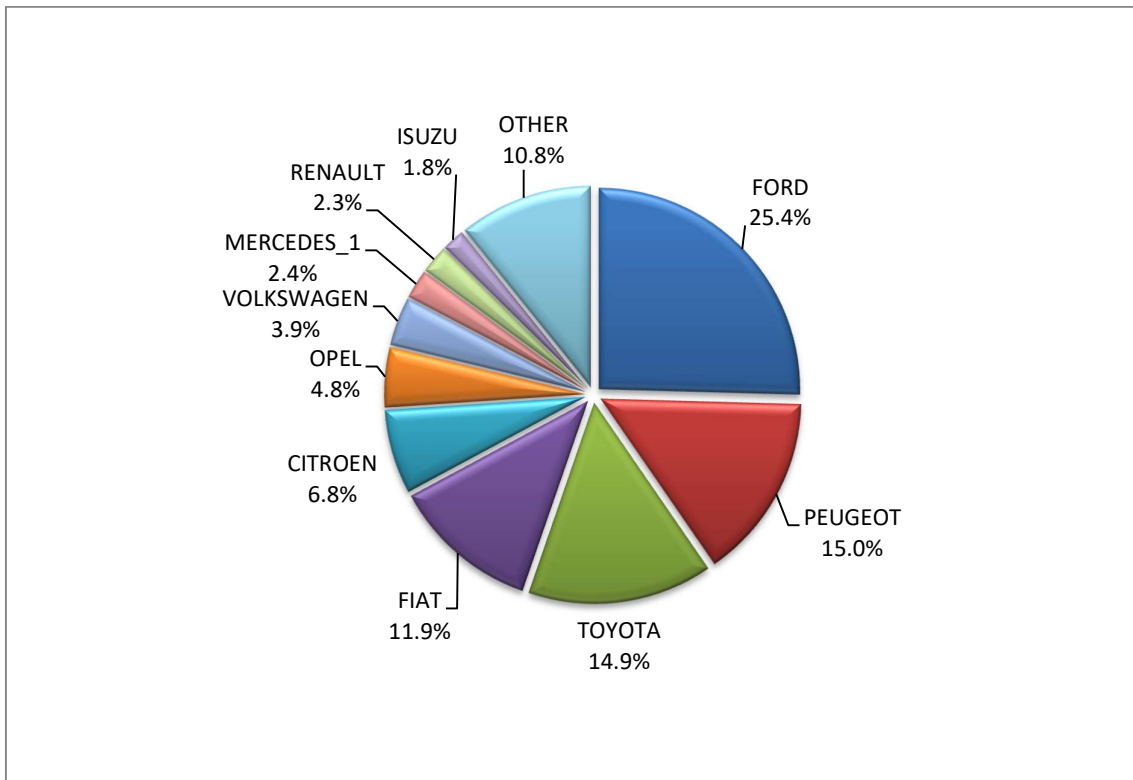


Table 6
Sales of new and used buses by make: March 2023 and January - March 2023

Make	Buses			
	March		January - March	
	new	used	new	used
BOVA	-	4	-	11
FORD	-	1	-	5
ISUZU, ANADOLU ISUZU, TURKUAZ, TURQUOISE, AIOS, AOS, GLOBUS	1	-	1	-
ISUZU, AOS, GLOBUS	-	-	3	-
IVECO	-	-	-	2
KING LONG	-	-	2	-
MAN	1	3	8	32
MAN/NEOPLAN	-	2	-	2
MERCEDES	2	34	2	161
MERCEDES ¹	9	-	33	1
MERCEDES ²	1	1	3	2
NEOPLAN	-	2	3	4
OTOKAR	-	-	-	2
RAMPINI	-	-	3	-
SCANIA	-	1	-	1
SETRA	-	6	-	13
TEMSA	-	3	-	6
VAN HOOL	-	-	-	2
VOLKSWAGEN	-	-	-	1
VOLVO	-	-	-	2
TOTAL	14	57	58	247

1 : With 2nd/3rd stage manufacturer in Greece.

2 : With 2nd/3rd stage manufacturer abroad.

Graph 12. Sales of new buses by make (January – March 2023)

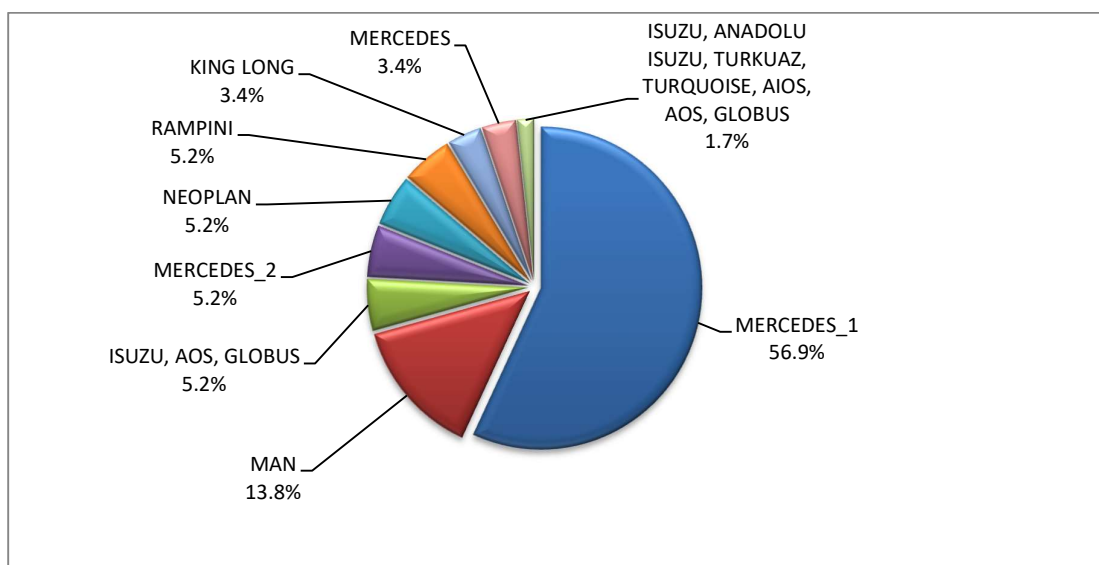


Table 7

Sales of new and used motorcycles by make or manufacturer: March 2023 and January - March 2023

Make	Motorcycles			
	March		January - March	
	new	used	new	used
AEON MOTOR	-	-	-	1
AJP	1	-	1	-
ALREND0	-	-	1	-
APRILIA	46	6	116	7
ARIIC, JINLANG	1	-	1	-
ARMONY, ARORA, BUKE, BULL MOTORS	1	-	2	-
BAJAJ	5	-	11	-
BAOTIAN, SUPERKING, WALTON, HONDA	-	-	1	-
BASHAN, AMGroup, AMGroup Bike, DON, IRBIS, WORKER BEAR, Nomik ATV 2	7	-	8	-
BENELLI	62	3	100	3
BETA	22	2	49	2
BMW	87	29	235	90
BOMBARDIER RECREATIONAL PRODUCTS ING (BRP)	1	2	1	4
BRIXTON	18	-	33	-
BRP	-	1	-	1
BUELL	-	1	-	1
CAKE	1	-	1	-
CFMOTO	228	-	376	2
CHANGJIANG	-	4	-	4
CLUB CAR, LLC	-	1	-	1
DAYANG, DAYTONA MOTORS, NIPPONIA, DOCKER, WAYEL, SUMCO, VEEROAD, CETUR, RUTEC	-	-	1	-
DAYANG, DAYTONA MOTORS, NIPPONIA, DYMOTO, DOCKER, VEEROAD, EVO MOTORS, SUMCO, CETUR, HANSOM	5	-	15	-
DAYANG, DAYTONA MOTORS, NIPPONIA, DYMOTO, VEEROAD, EVO MOTORS, MH MOTORCYCLES, FKM, FKMOTORS	10	-	26	-
DAYANG, DAYTONA MOTORS, NIPPONIA, KUBA, VEEROAD, SUMCO, CETUR, RUTEC	64	-	156	1
DAYANG, DAYTONA MOTORS, NIPPONIA, VEEROAD	166	-	452	1
DAYANG, DAYTONA MOTORS, NIPPONIA, VEEROAD, DOCKER	75	-	187	-
DAYANG, ECOCREMO, ECOOTER, ECOOTOR,AGM, ORCAL, SUMCO	1	-	2	-
DAYANG, DAYTONA MOTORS, NIPPONIA, DOCKER, WAYEL, SUMCO, VEEROAD, CETUR, RUTEC, ZENKO	1	-	10	-
DAYTONA MOTORS, DAYANG, NIPPONIA, DYMOTO, DOCKER, VEEROAD, EVO MOTORS, SUMCO, CETUR, HANSOM, RUTEC	6	-	12	1
DAYTONA MOTORS, EVO MOTORS, LONGJIA, ORCAL, NECO, VGA, ROMET MOTORS, DRAX, MONDIAL, JUNAK, ONLINE	10	-	17	-
DAYTONA MOTORS, YINGANG, KUBA, RKS, SKYJET, MAGPOWER, MITT, VENTUR, ARCHIVE MOTORCYCLE	4	-	6	-
DAYTONA MOTORS, ZONTES, TAYO, KIDEN, Haojiang, ZHONGYU, Sharpon, TANNY, TYAN, SENKE, B BETA	1	-	1	-
DERBI	-	-	-	1
DUCATI	14	4	38	19
E TUK FACTORY	-	-	1	-
E-BROH	-	-	1	-
ECOOTER, ETRIX, AGM, DRAX, ORCAL, SUMCO	1	-	1	-
EFUN, ZAP	22	-	40	-
EMBUGGY, EVANGEL, The Original BeachBuggy, Beach Buggy	5	-	9	-
FANGPOWER, Kontio Motors	4	-	4	-
FANTIC MOTOR	2	-	2	-
FD MOTORS, FASPIDER, Daytona Motors, EVO Motors, Veeroad	2	-	3	-
FD MOTORS, FASPIDER, DAYTONA MOTORS, NIPPONIA, QUANTYA	1	-	8	-

Table 7 (cont)

Sales of new and used motorcycles by make or manufacturer: March 2023 and January - March 2023

Make	Motorcycles			
	March		January - March	
	new	used	new	used
FELQ	1	-	2	-
FENGCHENG, FULLCHEER, Barman-pakro, NITSURO, VOLDORK, SPIMRI, Elektra EV, EK0e, BITMART	2	-	3	-
GASGAS	3	1	5	3
GENERIC,EXPLORER,MALANCA,KSR Moto Austria, Motron Motorrad	1	-	2	-
GILERA, PIAGGIO	-	-	-	2
GOLDEN LION, SAKURA, ARTISAN, ETALIAN, E-mio, Fauro, Kito, Varaneo, Viverra	-	-	3	-
GPX	5	-	23	-
GUSITE, RKS, KUBA, KOKO, KAVIR, BECANE, EVO MOTORS, Daytona MOTORS, SUMCO, SKYJET	19	-	24	-
Haojiang,ZONTES,TAYO,Sharpon,IFINO,KIDEN,ZHONGYU,CUBTOM,DIYUN,NAMIN,TIM DERVI,VUKA,THUMP,R-ipper	7	-	19	-
HARLEY DAVIDSON	1	9	2	21
HONDA	1,425	49	3,165	137
HORWIN	2	-	2	-
HUSQVARNA	10	4	27	11
INDIAN MOTORCYCLE	3	-	9	-
ITALJET	-	-	1	-
JAWA	-	-	1	-
JCADI, TILGREEN, Grupo Invicta MOTOR, e-broh, FAURO	1	-	1	-
JIAJI, HUATIAN, FEILING, LINTEX, GOMAX, SOMOTO, TECHMOOVE, TAURIS	1	1	1	1
JIANSHE	1	-	1	-
JIAYUAN	13	-	29	-
JNEN, JUNENG, ZIPP, MOTORAN, HORS	6	-	8	-
JNEN, JUNENG, ZIPP, MOTORAN, HORS, FLEX TECH, RAZZO, TOROS, ONE, JUNAK	2	-	3	-
JONWAY, JMSTAR, SHENKE, HUIBANG	-	1	-	1
KAWASAKI	12	6	20	23
KEEWAY	-	1	-	2
KSR MOTO AUSTRIA, MOTRON MOTORRAD	2	-	6	-
KTM	23	25	74	48
KUBA, MH MOTORCYCLES, MGB, SHINERAY, DAYTONA MOTORS, MASH	7	-	7	-
KYMCO	178	37	348	97
LAMBRETTA	1	-	2	-
LIFAN, HONLEI, SKYGO, BISAN-LIFAN	1	-	1	-
LINGZHIDA, LINZDA, LINDN, LINYI, LONGMAO, NLIGHT	2	-	3	-
LINHAI	-	1	-	1
LOJO, SUNPULSE	1	-	1	-
LOJO, SUNPULSE, YGM	9	-	13	-
LONCIN, KINLON, LONGTING, KUBA, YUKI, MONDIAL, STMAX, KANUNI, MOTORAN, ASYA, QUSWA, PUMAREX, RALLY USA, MOD, CCM	9	-	28	-
LONCIN, KUBA, RKS, ITALIKA, VOGÉ, SUNRACE, SKY, MALAGUTI, ROCKET, SUPERBIKE, NOVELBAT, TRIDIAMOND	22	-	63	-
LONCIN, VOGÉ	32	-	39	-
LONCIN, VOGÉ, KUBA, RKS, ITALIKA, SUNRACE, SKY, MALAGUTI, SUPERBIKE, ROCKET, NOVELBAT, TIGREMOTO, GREEN	11	-	17	-
LONGJIA, ITALJET, ORCAL, BEELINE, ROMET MOTORS, GEMINI, LEXMOTO, JAHANRO, VGA, DAYTONA MOTORS	1	-	1	-
LONGJIA, ORCAL, NECO	4	-	5	-
LONGJIA, ORCAL, NECO, ALFASCOOTERS, VGA, ROMET MOTORS, BARTON MOTORS, OVER, CAROLYN, KANUNI, BTC	16	-	16	-

Table 7 (cont)

Sales of new and used motorcycles by make or manufacturer: March 2023 and January - March 2023

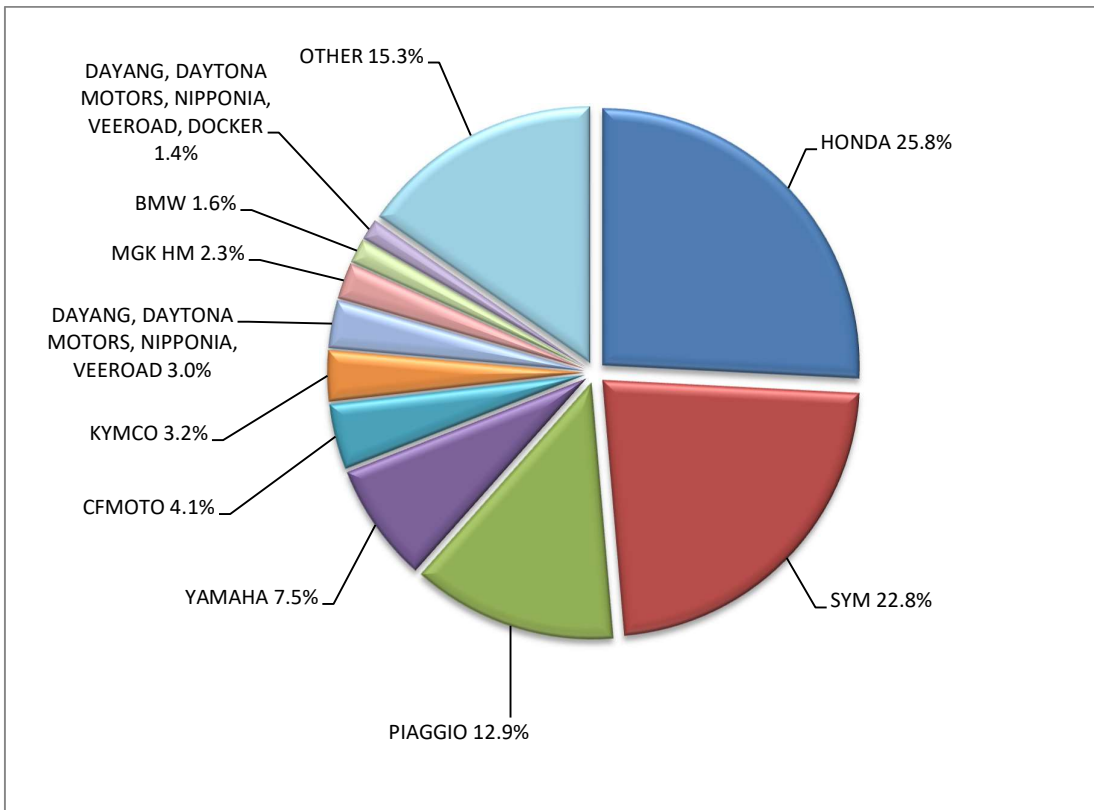
Make	Motorcycles			
	March		January - March	
	new	used	new	used
LONGJIA, ORCAL, NECO, ALFASCOOTERS, VGA, ROMET MOTORS, RYMCO, ASUS, OVER, CAROLYN, KANUNI, BTC, TURBHO, ITALMOTO	20	1	36	1
LONGJIA, ORCAL, NECO, VGA, GEMINI	-	-	2	-
LONGJIA, ORCAL, NECO, VGA, ROMET MOTORS, ROUTER, lexmoto, Gemini, MH, motorcycles	-	-	1	-
LVNENG	3	-	6	-
MACBOR, RVM, COLOVE, ORCAL, DAYTONA MOTORS, ZF-KY, LEXMOTO, OVER BIKES, YUKI, AJS	8	-	23	-
MALAGUTI	16	2	47	4
MBK	-	1	-	1
MGK HM	128	-	363	1
MINSK, ZONGSHEN, IRIBIS, MONDIAL, LEXMOTO, JUNAK, HONLEY, OVERBIKES	-	-	3	-
MOTO GUZZI	8	-	19	-
MOTO MORINI	-	-	4	-
MOTRON MOTORRAD, ZONGSHEN	1	-	1	-
MV AGUSTA	-	3	1	3
NIU, NUUV	2	-	5	-
OPAI	1	-	1	-
ORCAL, SOMOTO, AJS, SENKE, HERALD, ITALJET, WACCO, MOTOBI, CLEVELAND CYCLEWERKS ACE, MERCURY, SAXXX, SFM	-	1	-	1
PEUGEOT	-	-	-	3
PIAGGIO	714	30	1,528	78
PILOT CAR	1	-	1	-
POLARIS	19	1	32	2
PURSANG	-	-	1	-
QJ, QJIANG, KEEWAY, LEONE, KUBA, RKS, BENELLI, VENGO, QJMOTOR, B MOTOBI, ONLINE	4	-	8	-
QJ, QJIANG, KEEWAY, LEONE, KUBA, RKS, QJMOTOR, B MOTOBI	3	-	4	-
QJ, QJIANG, KEEWAY, LEONE, RKS, BENELLI, EMPIRE KEEWAY, KUBA	-	-	4	-
QJ, QJIANG, QJMOTOR, B MOTOBI	10	-	13	-
RAY ELECTRIC MOTORS	1	-	1	-
REDMOTO	4	1	6	1
RENLI	2	-	2	-
ROYAL ENFIELD	17	-	50	1
Royalloy, Royal Alloy, RA	1	-	1	-
SANYANG	-	-	-	1
SCUTUM, ETRIX, SILENCE	1	-	2	-
SEGWAY	9	-	14	-
SHANYANG, ATLAS PANTHER, YAMAZUKI MOTO, MOTORKING, Hirlee, XB	1	-	4	-
SHERCO	3	-	7	-
SHINERAY, SWM	1	-	6	-
SILENCE, SCUTUM, ETRIX	3	-	12	-
SUZUKI	19	14	49	34
SYM	1,260	16	2,836	44
TARO, JUNAK, BARTON MOTORS, ORCAL, Lexmoto	12	-	32	-
TARO, JUNAK, BARTON MOTORS, ORCAL, Lexmoto, MITT, NECO, WOTTAN, MAGPOWER, ADAMOTO MOTORCYCLES	1	-	2	-
TARO, JUNAK, BARTON MOTORS, ORCAL, Lexmoto, MITT, NECO, WOTTAN, MAGPOWER, ADAMOTO, MAXON, MAX-ON, TRMOTOR, CHUANL	5	-	13	-
TARO, TRMOTOR, CHUANL, JUNAK, BARTON MOTORS, ORCAL, Lexmoto, MITT, NECO, WOTTAN, MAGPOWER, ADAMOTO MOTORCYCLES	1	-	2	-

Table 7 (cont)

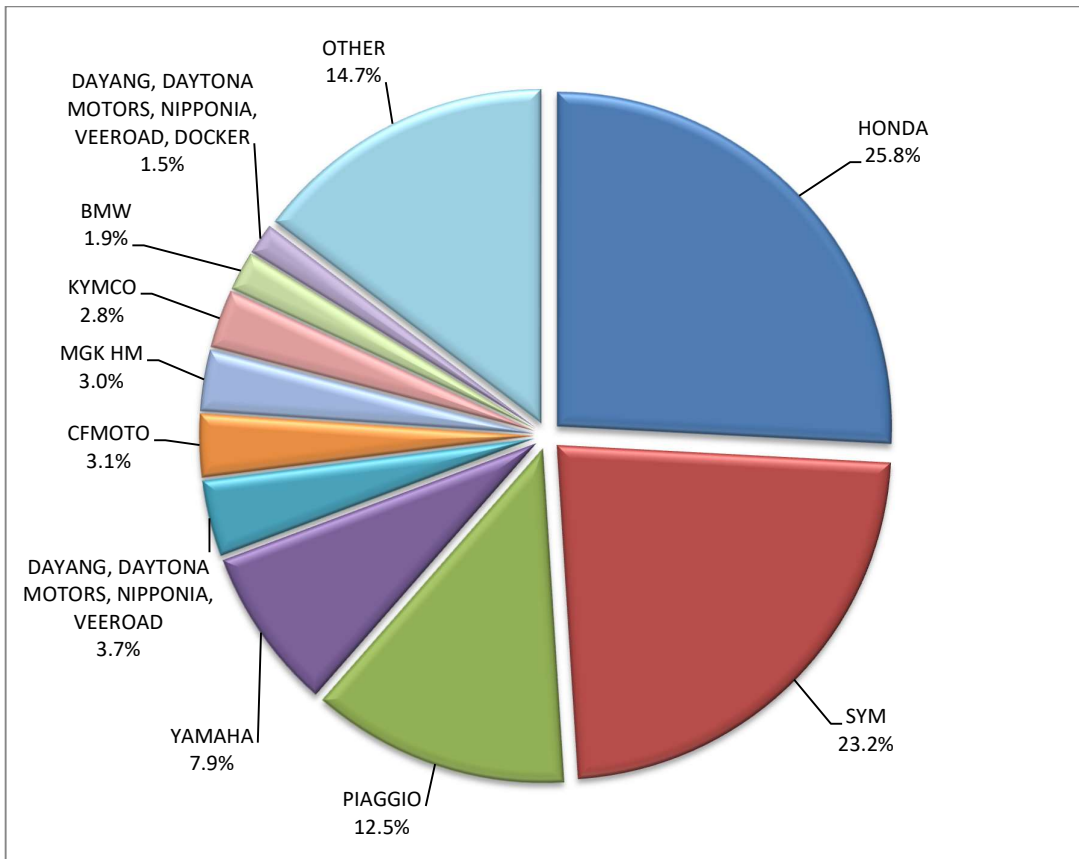
Sales of new and used motorcycles by make or manufacturer: March 2023 and January - March 2023

Make	Motorcycles			
	March		January - March	
	new	used	new	used
TAYO, HAOJIANG, ZHONGYU, THUMP, THUMPSTAR, KIDEN, ZONTES, Junak	2	-	8	-
TAYO, HAOJIANG, ZHONGYU, THUMP, THUMPSTAR, KIDEN, ZONTES, Junak, SENKE, TANNY, TYAN, ROMET	15	-	35	-
TAYO, HAOJIANG, ZHONGYU, THUMP, THUMPSTAR, KIDEN, ZONTES, Junak, SENKE, TANNY, TYAN, ROMET, ROMET MOTORS, ROUTER	4	-	17	-
TAYO, ZONTES, KIDEN, Haojiang, ZHONGYU, Sharpon, TANNY, TYAN, Senke, B BETA, Daytona Motors	7	-	22	-
TAZZARI	1	-	1	-
TGB	1	-	1	-
TIANYING, RIYA, HONGYUNDA, TYM, HONLING, SANBEN, XINBEN, TAMCO, ALISON, DMK MOTORS	-	-	5	-
TINBOT, KOLLTER, MASAI, INTO, VIARELLI, EDRIVE, DuroCar, MGK HM, Fauro, BRINCO	-	-	2	-
TINBOT, KOLLTER, MASAI, MS ENERGY	-	-	1	-
TM RACING	-	-	-	1
TODAY SUNSHINE	-	-	1	-
TRIUMPH	22	3	41	11
UM	2	-	2	-
VMOTO-SOCO, E-MAX, VMOTO, SUPER SOCO	3	-	15	-
VOLTA, VTA, REVOLT	2	-	5	-
WANGYE, SANBEN, UM, KENOS, SUPERBYKE, MDC, MISTRAL	2	-	2	-
WG TRIKE	-	-	-	1
WONJAN, THRUST MOTOR, WMOTO, KEEWAY, TD	15	-	22	-
WOW!	-	-	1	-
XINRI, SUNRA ,APACHI, ISILDAR, ISILDAR APACHI, WAYSCRAL, KRAL	2	-	7	-
YADEA	5	-	5	-
YAMAHA	413	55	962	144
YAMAHA, MBK	-	3	-	3
YASAN MOTOR, KITO	-	-	1	-
YINXIANG, KENBO	1	-	1	-
YINXIANG, MONDIAL, GEMINI, TCB	-	-	1	-
YIYING	-	-	2	-
ZERO MOTORCYCLES	1	-	4	-
ZHIDOU , ZD, RKS	35	-	39	-
ZHONGNENG, ZNEN, AGM, BTC, CLS, COLIBRI	-	-	1	-
ZONGSHEN	-	-	1	-
TOTAL	5,520	319	12,250	821

Graph 13. Sales of new motorcycles (March 2023)



Graph 14. Sales of new motorcycles (January – March 2023)



EXPLANATORY NOTES

Survey on the issuing of new road motor vehicle circulation licenses	The survey on the issuing of new motor vehicle circulation licenses is a census survey. The released data give information, at country level, on the brand and type of the motor vehicle, as well as whether it is new or used. The survey does not include vehicles that move on rails, trolley busses, agricultural tractors and machinery. In addition, the following are excluded: all motor vehicles of the Armed Forces, Police, Fire Brigade, State Services, Diplomatic Corps, Foreign Missions, and Invalids of Wars, as well as motorcycles with a cylinder capacity less than 50 cc.
Legal basis	Law 3832/2010
Reference Period	March 2023
Coverage	The production of monthly data is based on the registers held by the Ministry of Infrastructure, Transport and Networks, which records all the monthly changes observed in the vehicle registration licenses at country level.
Definitions	<p>Road motor vehicle is any vehicle that, irrespective of the number of wheels, is moved by an engine and is designed to transport persons or cargo or both of them, either they are on the same single vehicle or on a trailer carried by the main motor vehicle.</p> <p>New road motor vehicle is any motor vehicle that is registered for the first time in Greece during the reference month and has not been put into circulation in any other country.</p> <p>Used motor vehicle is any motor vehicle that is registered for the first time in Greece and has been imported as a used one from abroad</p> <p>Passenger motor vehicle: it is a motor vehicle designed to carry mostly people, having no more than 9 seats, including the driver's seat.</p> <p>Bus: it is a motor vehicle, which is designed to carry mostly people, having more than 10 seats, including the driver's seat. In the corresponding tables of this announcement, this category also includes articulated buses.</p> <p>Lorry: it is motor vehicle designed to carry mostly cargo. In the corresponding tables of this announcement, this category also includes tractors, tow trucks, articulated tractors, and trucks with trailers.</p> <p>Motorcycle: any two-wheeled motor vehicle, with or without sidecar, with maximum authorized design speed over 45 km/h, or in case it is powered by a combustion engine, with a cylinder capacity of 50 cc or over. In the corresponding tables of this announcement, this category also includes the three-wheeled motor vehicles – motor tricycles.</p> <p>Tricycle motor vehicle: it is a motor vehicle with three symmetrical wheels with maximum authorized design speed over 45 km/h, or in case it is powered by a combustion engine, with a cylinder capacity over the 50 cc. This category also includes four-wheel vehicles, except the light four-wheel motorcycles, whose empty vehicle tare (excluding the weight of the fuel or mixture of fuel-oil or the weight of the batteries for electric cars) is up to 400 kg in the case the vehicle is designed for passenger use or up to 550 kg in case the vehicle is designed to carry cargo and whose engine is up to 15KW.</p>
Methodology	Exhaustive Survey. The primary data derive from the Ministry of Infrastructure, Transport and Networks and are based on the issuing of new circulation licenses as they are registered by the Regional Offices for Transport and Communications.
References	More information (graphs, tables) concerning the survey on the issuing of new motor vehicle circulation licenses are available on the webpage of ELSTAT, www.statistics.gr , under the link http://www.statistics.gr/en/statistics/-/publication/SME24/