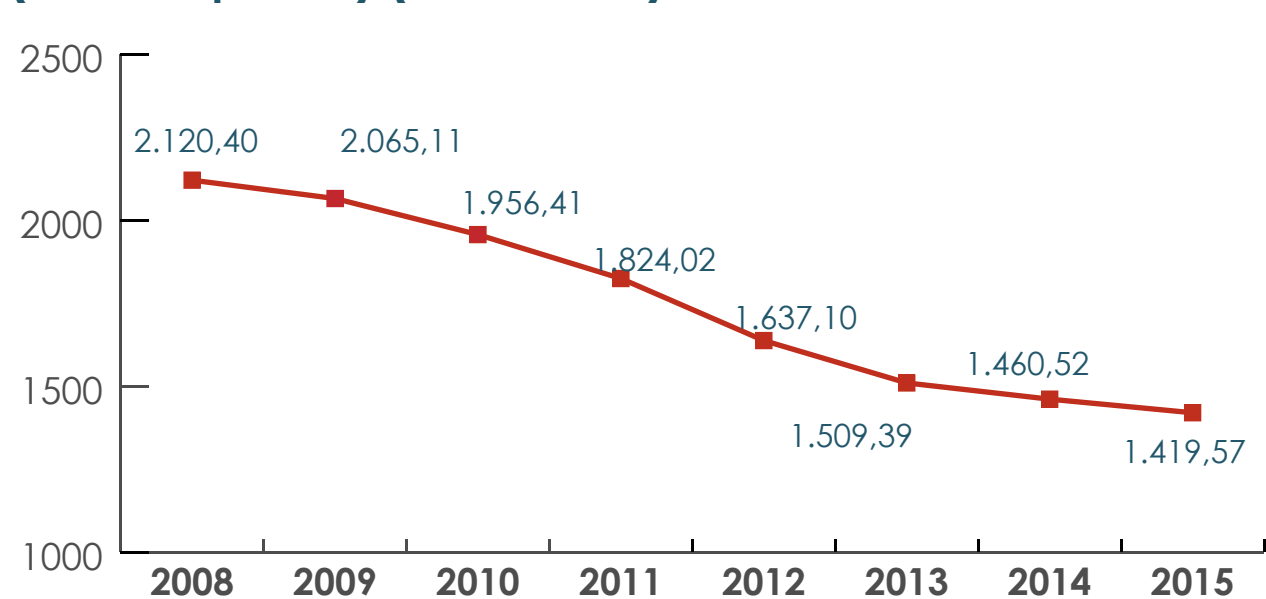


HOUSEHOLD BUDGET SURVEY 2015

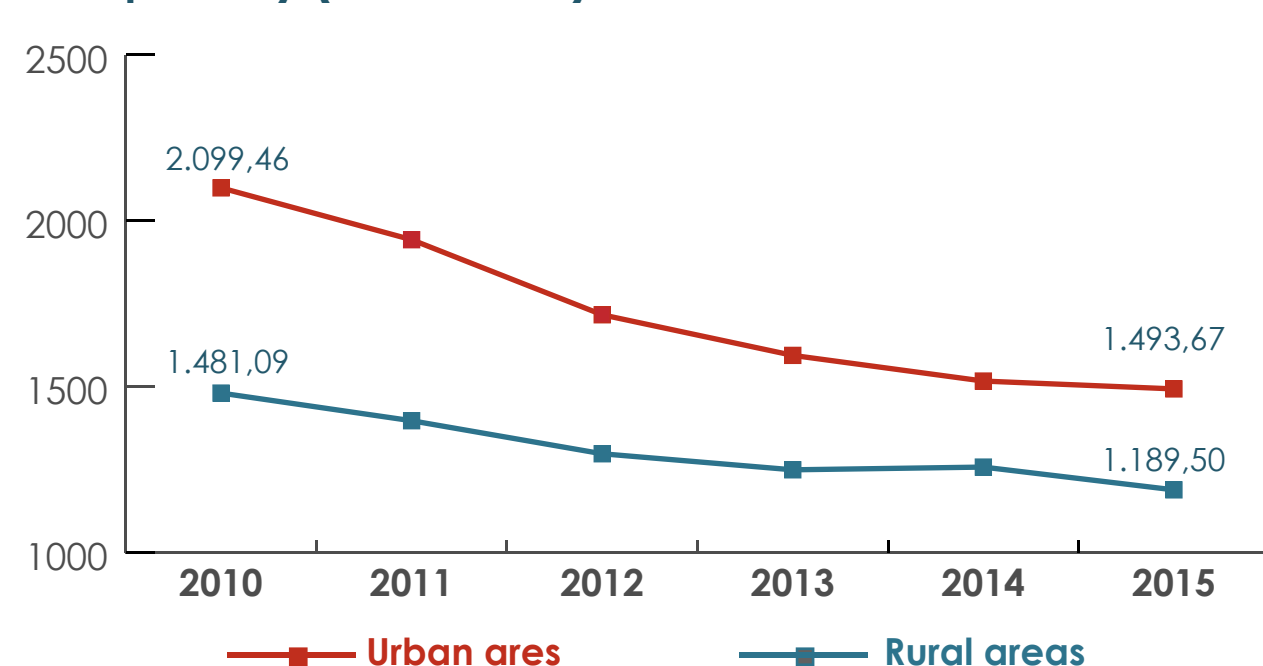
SAMPLE OF **6,150** PRIVATE HOUSEHOLDS



Average monthly household expenditure in € (current prices) (2008-2015)

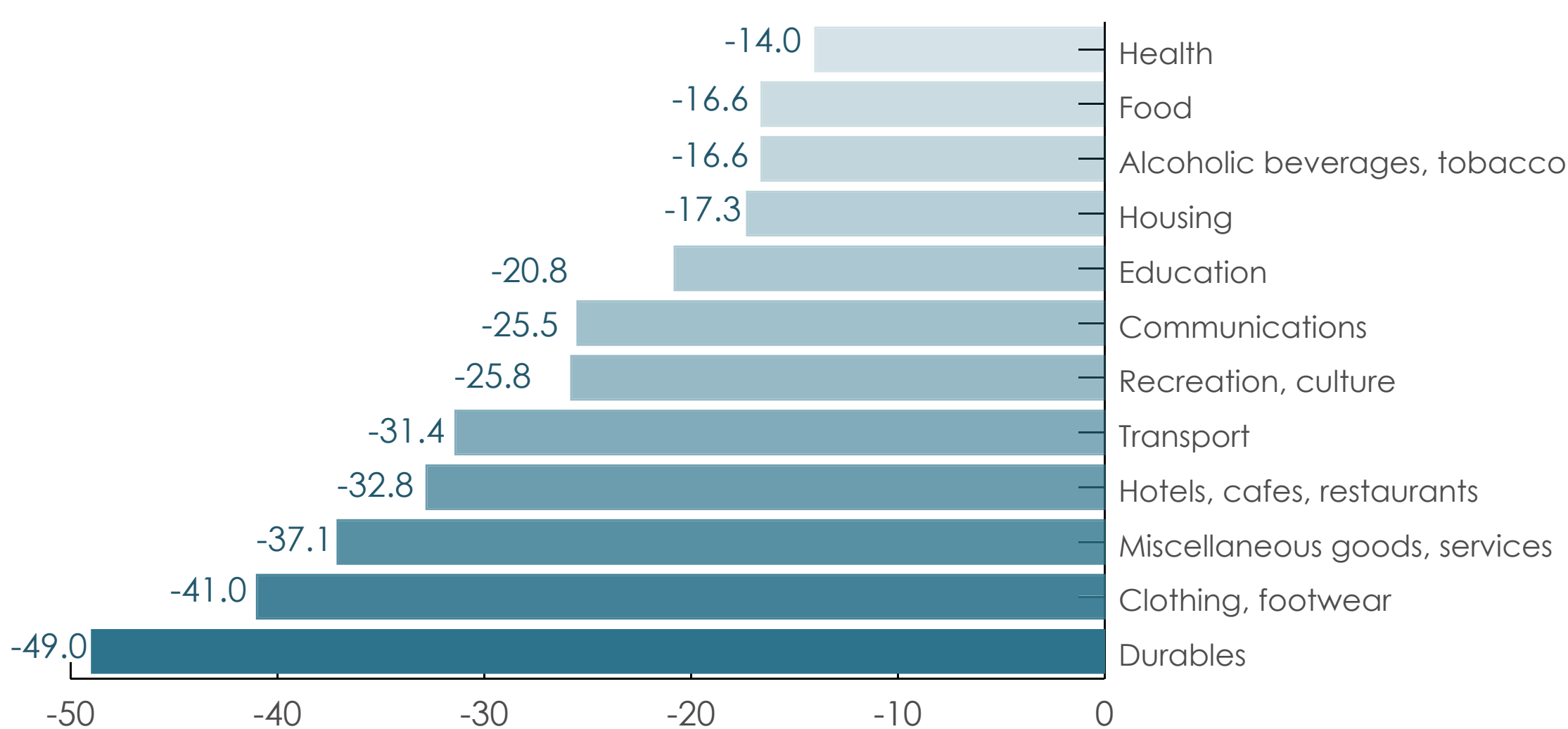


Average monthly expenditure in urban and rural areas (current prices) (2010-2015)

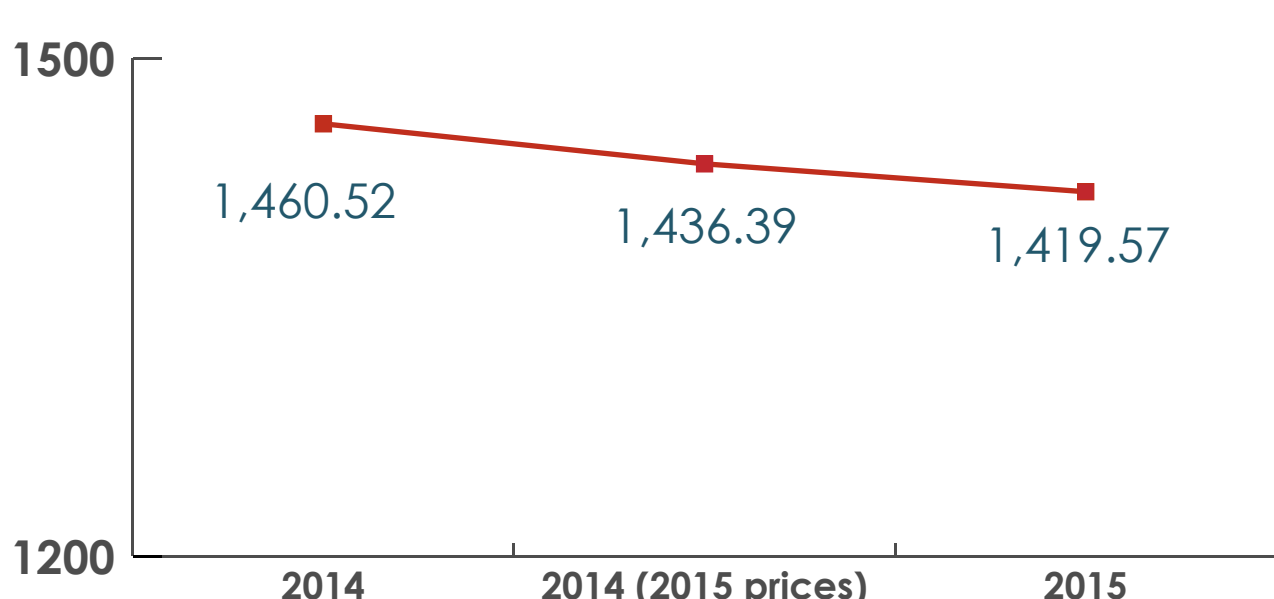


Households in **rural areas** spent on average **20.4%** less than households in **urban areas**

Change (%) in the average household expenditure on goods and services (current prices) (2010-2015)



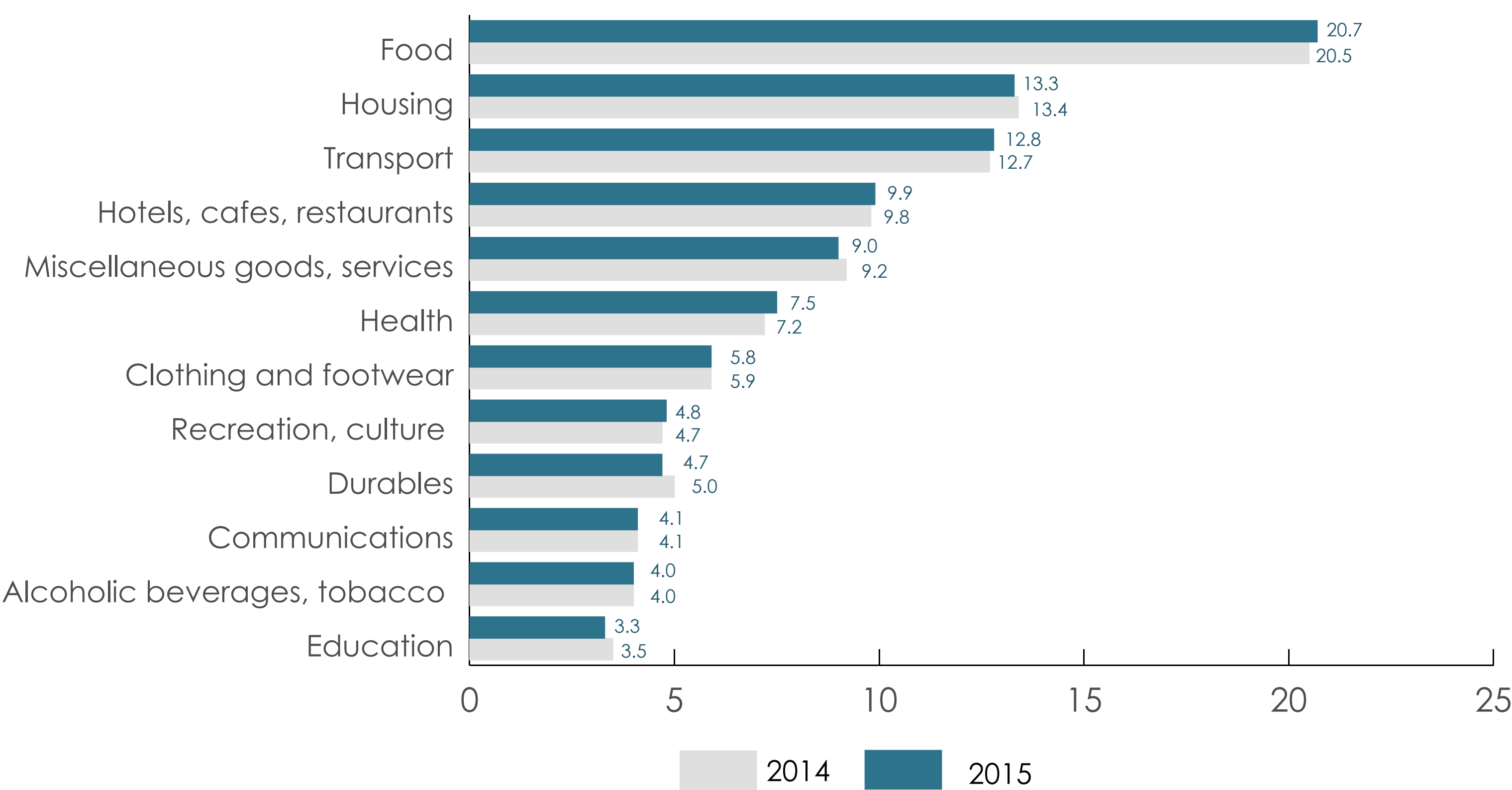
Average monthly household expenditure in € (2015-2014)



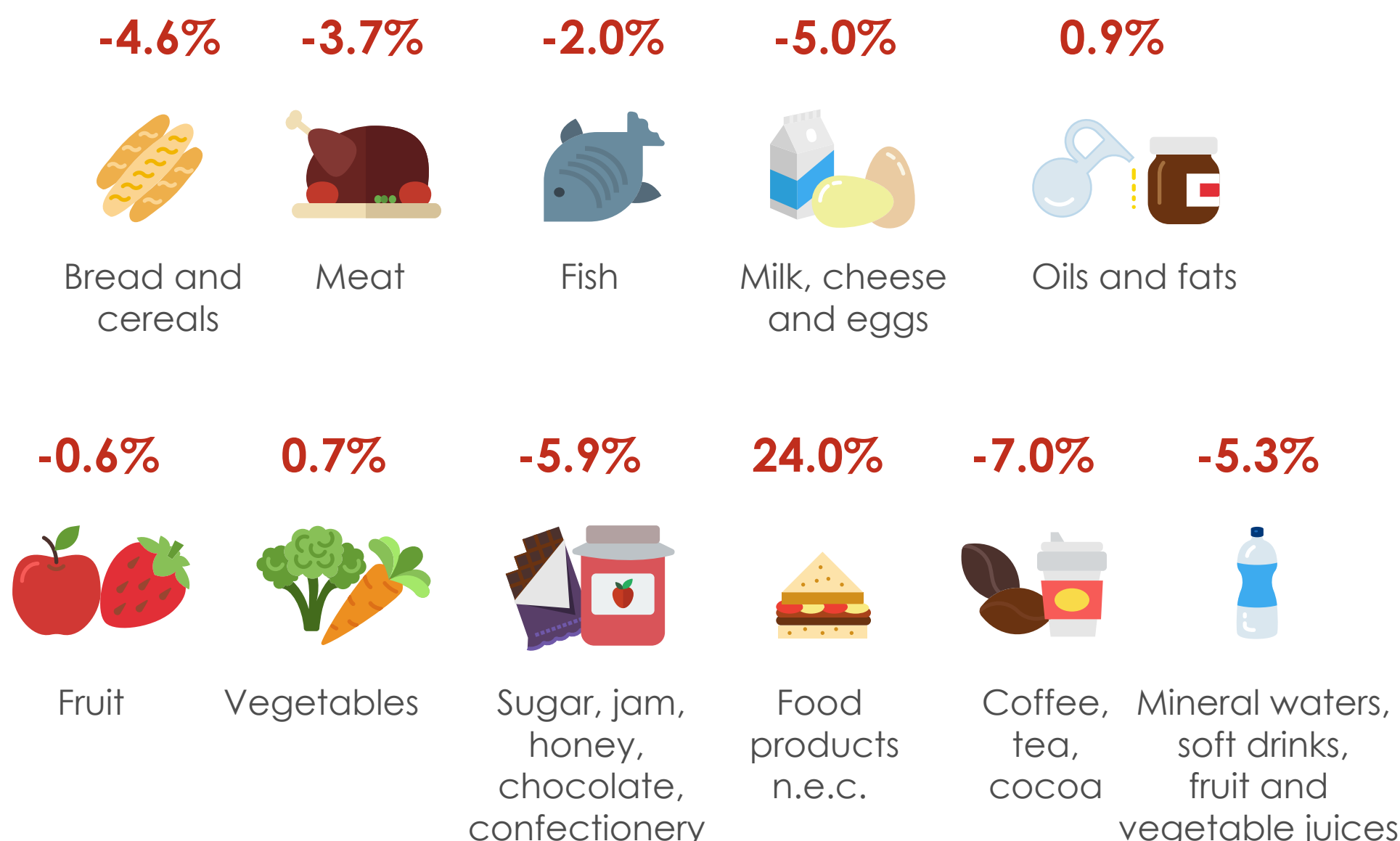
Decrease **2.8%** at current prices

Decrease **1.2%** in real terms

Percentage distribution of expenditure (purchases) on goods and services (current prices) (2015-2014)



Average monthly household expenditure (purchases, current prices) on food - Change in value (%) 2015/2014



Change in expenditure at current prices

The biggest change in expenditure (decrease) is recorded for **durables, education and miscellaneous goods and services**

