

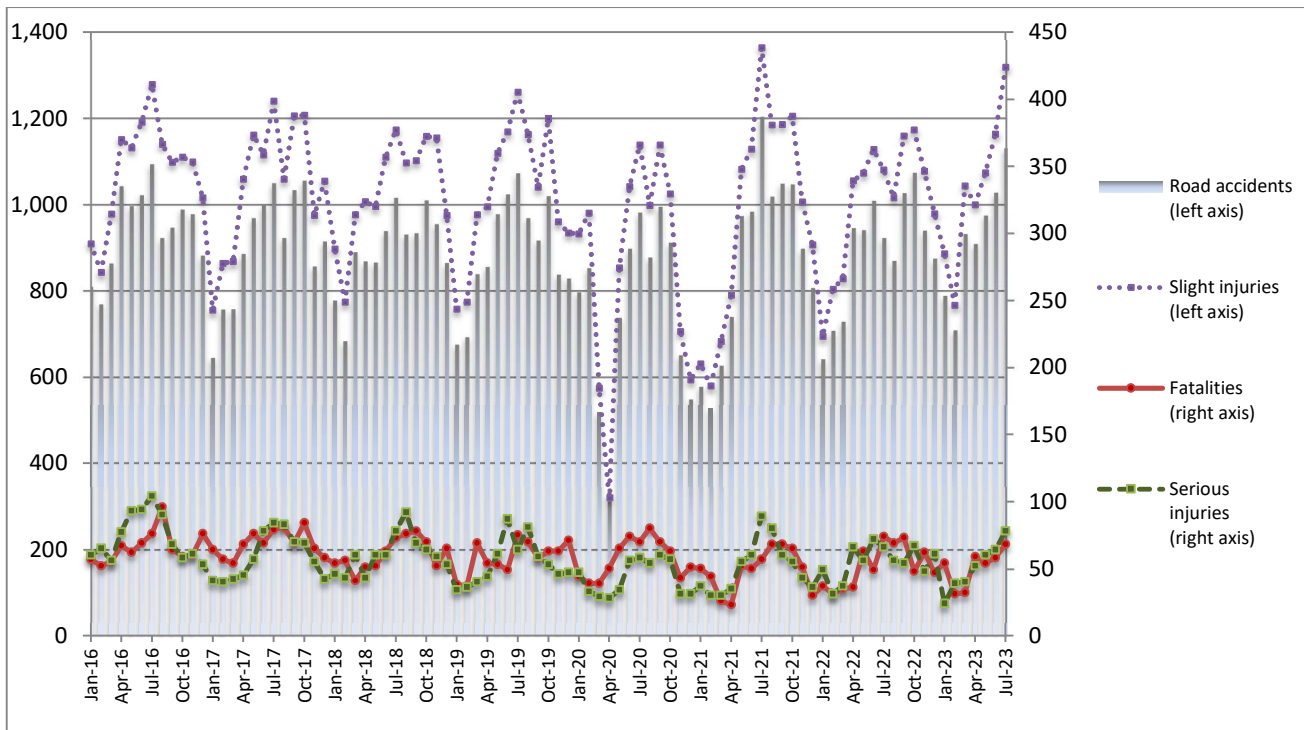


ROAD TRAFFIC ACCIDENTS: July 2023

The Hellenic Statistical Authority (ELSTAT) announces provisional¹ data from the survey on “Road Traffic Accidents” for July 2023. In particular, the road traffic accidents which occurred in Greece, resulting in death or injury, increased by 22.5% in comparison with the corresponding month of 2022 (1,131 road accidents in July 2023, against 923 road accidents in July 2022).

The casualties of the injury-causing accidents that occurred in July 2023 were as follows: 81 deaths, 78 serious injuries and 1,319 slight injuries. In contrast, in July 2022 the corresponding figures were: 68 deaths, 66 serious injuries and 1,080 slight injuries. Therefore, road traffic accident casualties in July 2023 increased by 19.1% for deaths, by 18.2% for serious injuries and by 22.1% for slight injuries.

**Graph 1: Road traffic accidents and casualties,
January 2016 - July 2023**



Provisional data for the period August 2022 – July 2023

Information on methodological issues:

Sectoral Statistics Division
Transport Statistics Section
L. Miliara
Tel: +30 213 135 3095
e-mail: l.miliara@statistics.gr

Information for data provision:

Tel: +30 213 135 2022, 2308, 2310
e-mail: data.dissem@statistics.gr

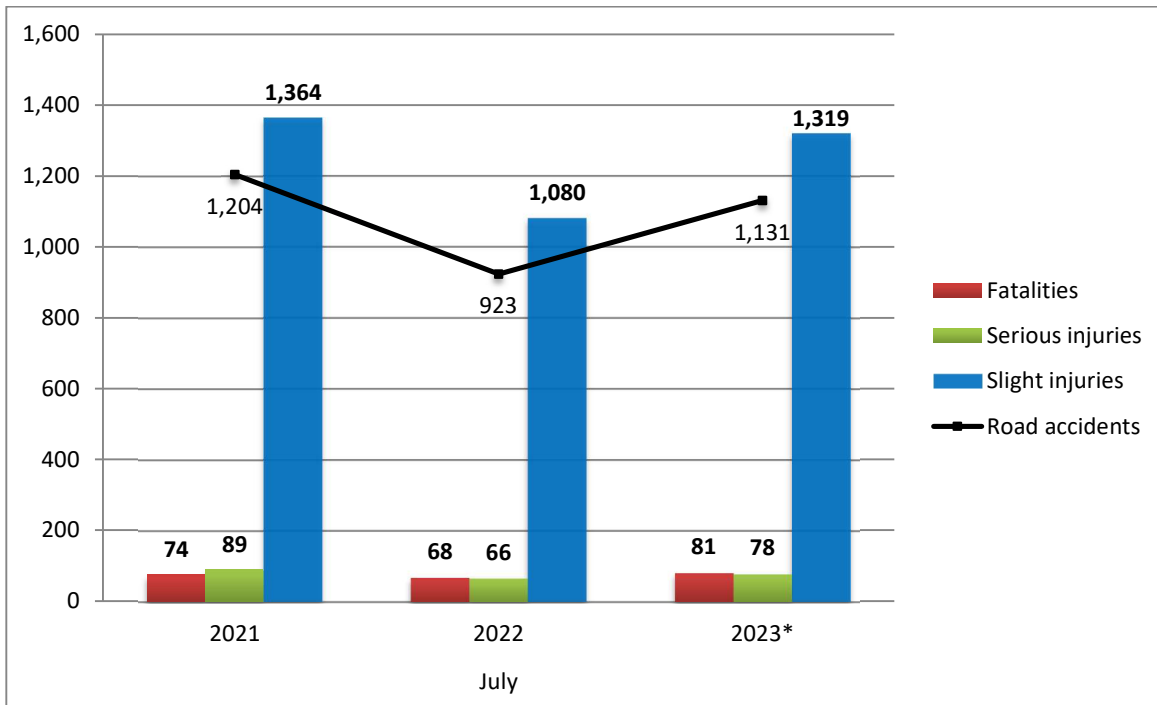
^[1] Data for the reference year is provisional until the finalization of the annual data, which takes place 12 months after the end of the reference year and is published in the corresponding announcement of the following year. During these 12 months the provisional data is updated on the basis of the data of the Road Accident Forms of that year which is transmitted to ELSTAT by Police Authorities (see explanatory notes).

Table 1: Road traffic accidents and casualties, July 2021 - 2023*

	July				
	2021	2022	2022/2021 (%)	2023*	2023*/2022 (%)
Road accidents	1,204	923	-23.3	1,131	22.5
Fatalities	74	68	-8.1	81	19.1
Total injuries	1,453	1,146	-21.1	1,397	21.9
Serious injuries	89	66	-25.8	78	18.2
Slight injuries	1,364	1,080	-20.8	1,319	22.1

* Provisional data

Graph 2: Road traffic accidents and casualties, July 2021 - 2023*



* Provisional data

Table 2: Road traffic accidents and casualties, by region and department, July 2022 and 2023*

Region and department	Road accidents			Fatalities			Serious injuries			Slight injuries		
	2022	2023*	%	2022	2023*	%	2022	2023*	%	2022	2023*	%
Greece Total	923	1,131	22.5	68	81	19.1	66	78	18.2	1,080	1,319	22.1
Anatoliki Makedonia and Thraki (East Macedonia and Thrace)	34	36	5.9	4	6	50.0	3	5	66.7	44	48	9.1
Drama	6	4	-33.3	1	0		0	0		6	6	
Evros	9	12	33.3	0	1		2	1		12	15	
Kavala	8	7	-12.5	1	1		0	3		9	8	
Xanthi	8	8	0.0	1	1		1	0		13	14	
Rodopi	3	5	66.7	1	3		0	1		4	5	
Kentriki Makedonia (Central Macedonia)	156	194	24.4	9	16	77.8	10	11	10.0	192	231	20.3
Imathia	2	3	50.0	1	0		0	1		1	2	
Thessaloniki	119	143	20.2	2	3		6	5		148	173	
Kilkis	6	9	50.0	2	0		2	2		8	14	
Pella	1	8	700.0	0	6		1	1		0	10	
Pieria	4	3	-25.0	0	2		0	1		6	4	
Serres	8	7	-12.5	2	2		0	0		8	6	
Chalkidiki	16	21	31.3	2	3		1	1		21	22	
Dytiki Makedonia (West Macedonia)	8	3	-62.5	1	0	-100.0	2	1	-50.0	8	8	0.0
Grevena	1	1	0.0	0	0		0	0		1	1	
Kastoria	1	1	0.0	0	0		0	1		2	1	
Kozani	6	0	-100.0	1	0		2	0		5	0	
Florina	0	1	-	0	0		0	0		0	6	
Ipeiros (Epirus)	22	19	-13.6	2	4	100.0	5	3	-40.0	21	17	-19.0
Arta	6	2	-66.7	1	1		1	0		6	1	
Thesprotia	3	5	66.7	0	1		2	0		1	7	
Ioannina	9	11	22.2	0	2		2	3		11	8	
Preveza	4	1	-75.0	1	0		0	0		3	1	
Thessalia (Thessaly)	22	25	13.6	0	6	-	3	2	-33.3	28	24	-14.3
Karditsa	9	3	-66.7	0	1		2	0		12	2	
Larissa	5	9	80.0	0	3		0	1		6	11	
Magnissia	4	8	100.0	0	2		1	0		4	7	
Trikala	4	5	25.0	0	0		0	1		6	4	
Ionia Nisia (Ionian Islands)	23	33	43.5	7	5	-28.6	3	6	100.0	25	31	24.0
Zakynthos	5	8	60.0	0	2		1	4		8	3	
Kerkyra	7	5	-28.6	3	1		0	0		7	4	
Kefallinia	5	10	100.0	2	1		1	2		6	10	
Lefkada	6	10	66.7	2	1		1	0		4	14	

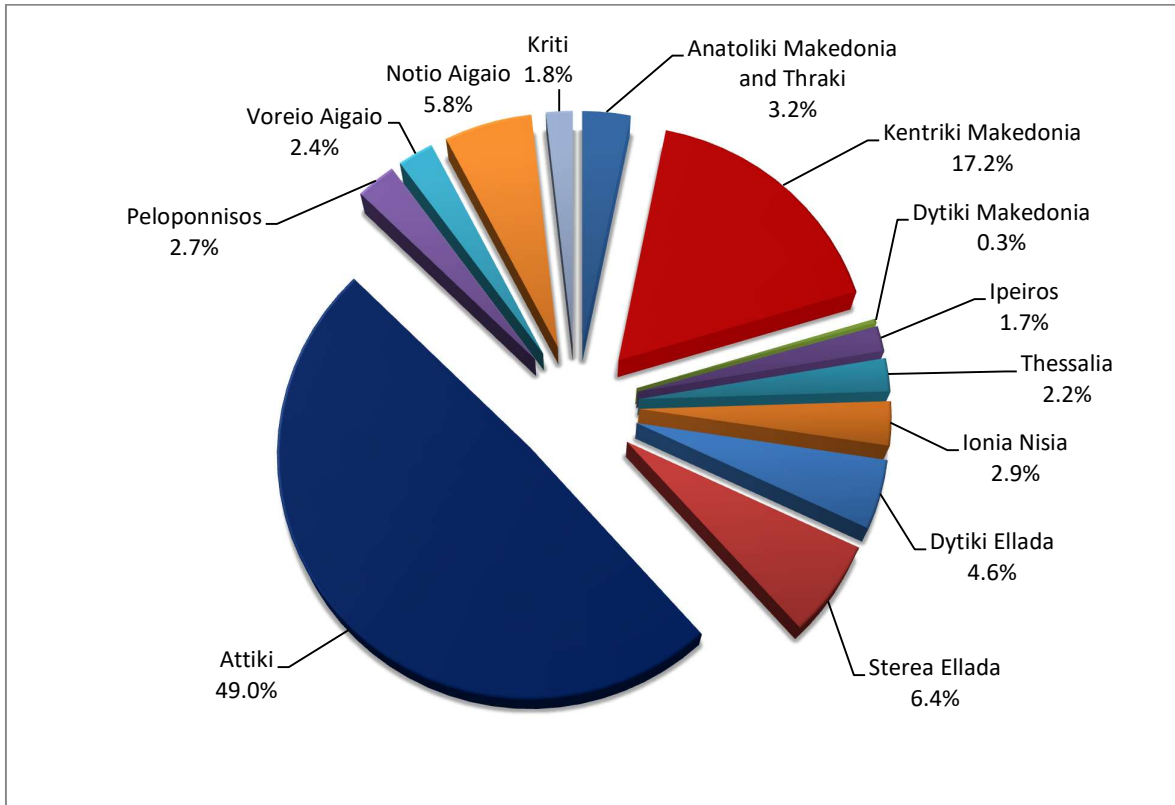
* Provisional data

Table 2: Road traffic accidents and casualties, by region and department, July 2022 and 2023* (Continued)

Region and department	Road accidents			Fatalities			Serious injuries			Slight injuries		
	2022	2023*	%	2022	2023*	%	2022	2023*	%	2022	2023*	%
Dytiki Ellada (West Greece)	47	52	10.6	6	5	-16.7	4	8	100.0	53	63	18.9
Etolia & Akarnania	17	20	17.6	3	1		1	2		17	23	
Achaia	20	21	5.0	1	2		2	2		22	28	
Ilia	10	11	10.0	2	2		1	4		14	12	
Stereia Ellada	56	72	28.6	7	7	0.0	7	7	0.0	67	87	29.9
Viotia	10	11	10.0	2	1		2	1		15	12	
Evia	30	46	53.3	1	4		4	4		33	57	
Evrytania	1	3	200.0	1	1		0	1		0	1	
Fthiotida	12	9	-25.0	1	1		1	1		14	11	
Fokida	3	3	0.0	2	0		0	0		5	6	
Attiki (Attica)	422	554	31.3	14	19	35.7	11	14	27.3	493	643	30.4
Peloponnisos (Peloponnese)	40	30	-25.0	3	5	66.7	4	3	-25.0	48	38	-20.8
Argolida	4	5	25.0	0	2		1	0		6	5	
Arkadia	7	4	-42.9	0	0		0	0		9	6	
Korinthia	23	11	-52.2	3	1		2	1		27	16	
Lakonia	3	2	-33.3	0	0		1	0		3	3	
Messinia	3	8	166.7	0	2		0	2		3	8	
Voreio Aigaio (North Aegean)	29	27	-6.9	4	0	-100.0	3	3	0.0	37	33	-10.8
Lesvos	20	13	-35.0	2	0		3	1		23	14	
Samos	6	9	50.0	1	0		0	0		11	15	
Chios	3	5	66.7	1	0		0	2		3	4	
Notio Aigaio (South Aegean)	42	66	57.1	5	3	-40.0	4	14	250.0	46	74	60.9
Dodekanissos	19	26	36.8	3	1		1	2		25	37	
Kyklades	23	40	73.9	2	2		3	12		21	37	
Kriti (Crete)	22	20	-9.1	6	5	-16.7	7	1	-85.7	18	22	22.2
Iraklio	8	9	12.5	1	2		3	1		8	10	
Lassithi	2	1	-50.0	0	0		0	0		2	1	
Rethymno	2	4	100.0	1	2		0	0		1	3	
Chania	10	6	-40.0	4	1		4	0		7	8	

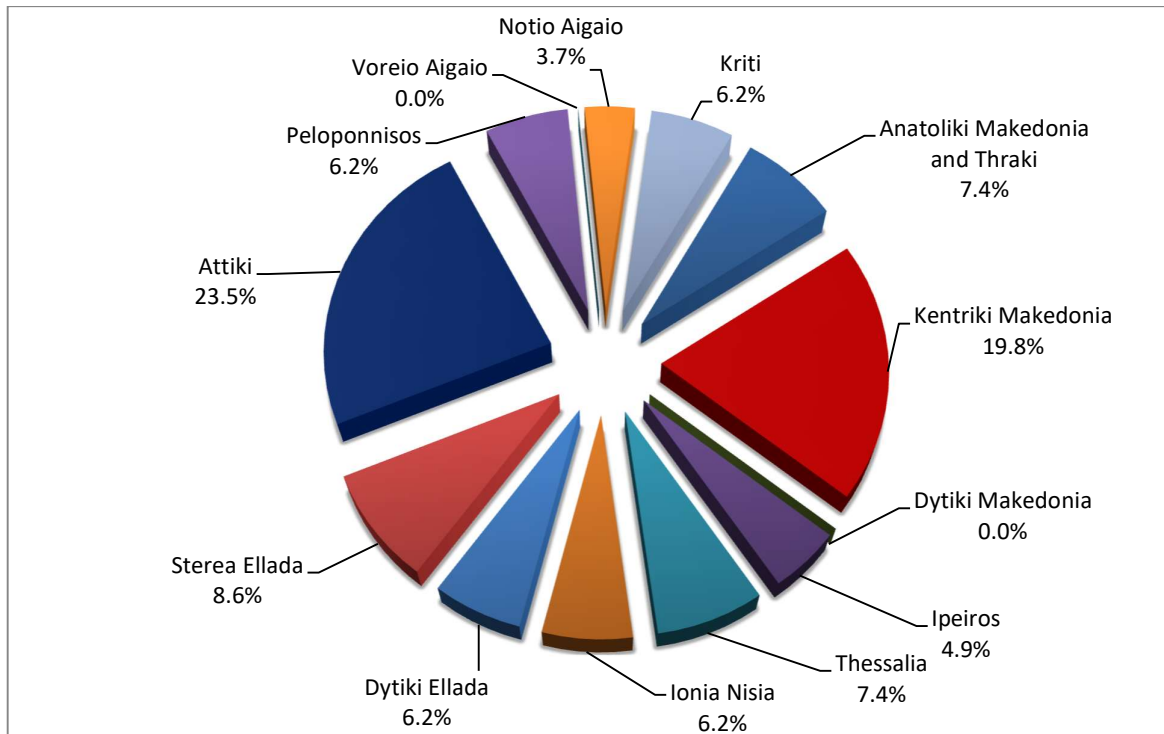
* Provisional data

Graph 3: Road traffic accidents by region, July 2023 *



* Provisional data

Graph 4: Fatalities by region, July 2023 *

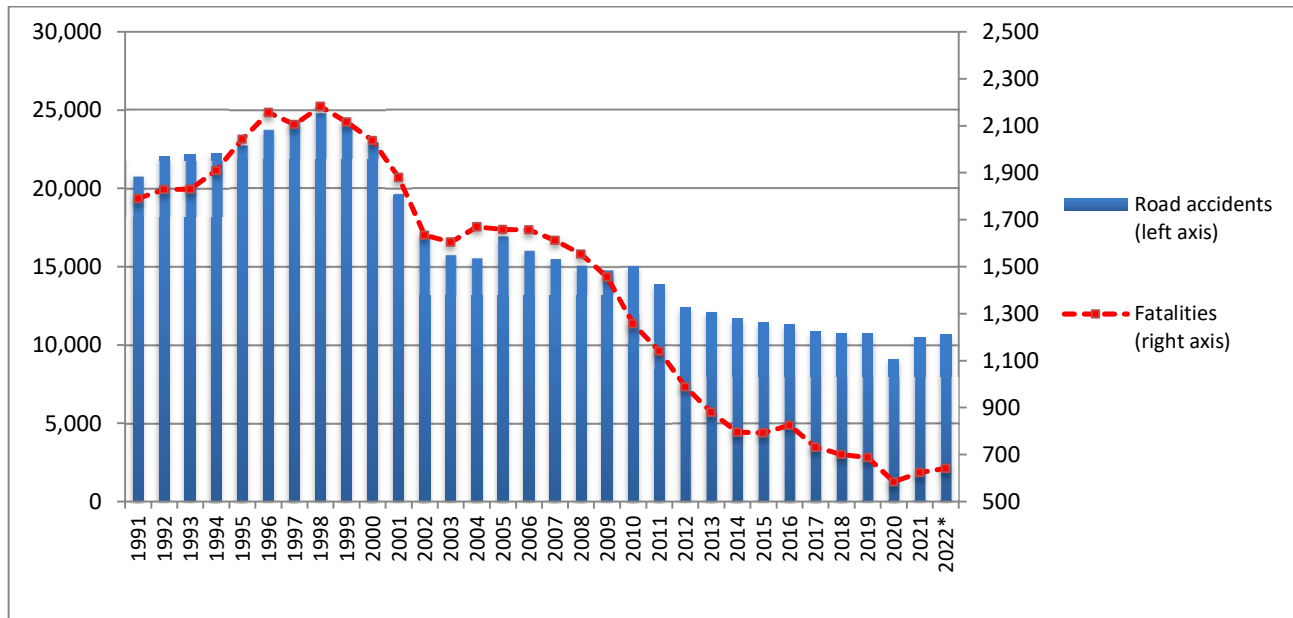


* Provisional data

Table 3: Road traffic accidents and casualties for the period January - July 2021, 2022 and 2023*

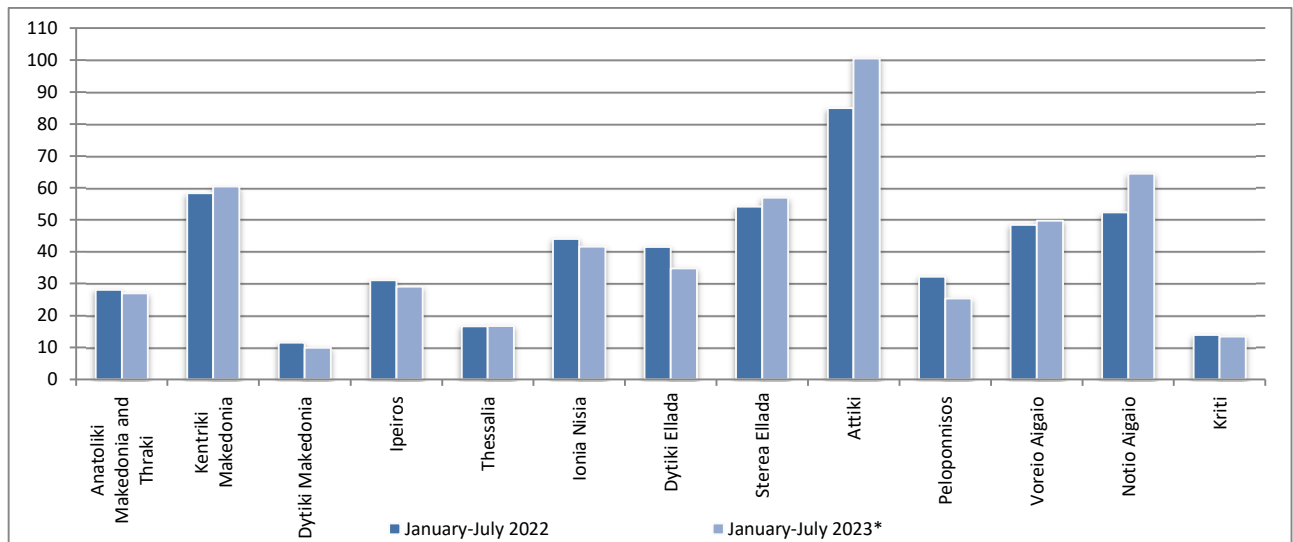
	2021		2022		2023 *
	January - July	Total year	January - July	Total year*	January - July
Road Accidents	5,634	10,454	5,898	10,684	6,473
<i>Annual Change (%)</i>			4.7	2.2	9.7
Fatalities	325	624	356	642	362
<i>Annual Change (%)</i>			9.5	2.9	1.7
Serious injuries	336	610	377	663	357
<i>Annual Change (%)</i>			12.2	8.7	-5.3
Slight injuries	6,257	11,746	6,662	12,066	7,253
<i>Annual Change (%)</i>			6.5	2.7	8.9

Graph 5: Total road traffic accidents and fatalities, 1991-2022*



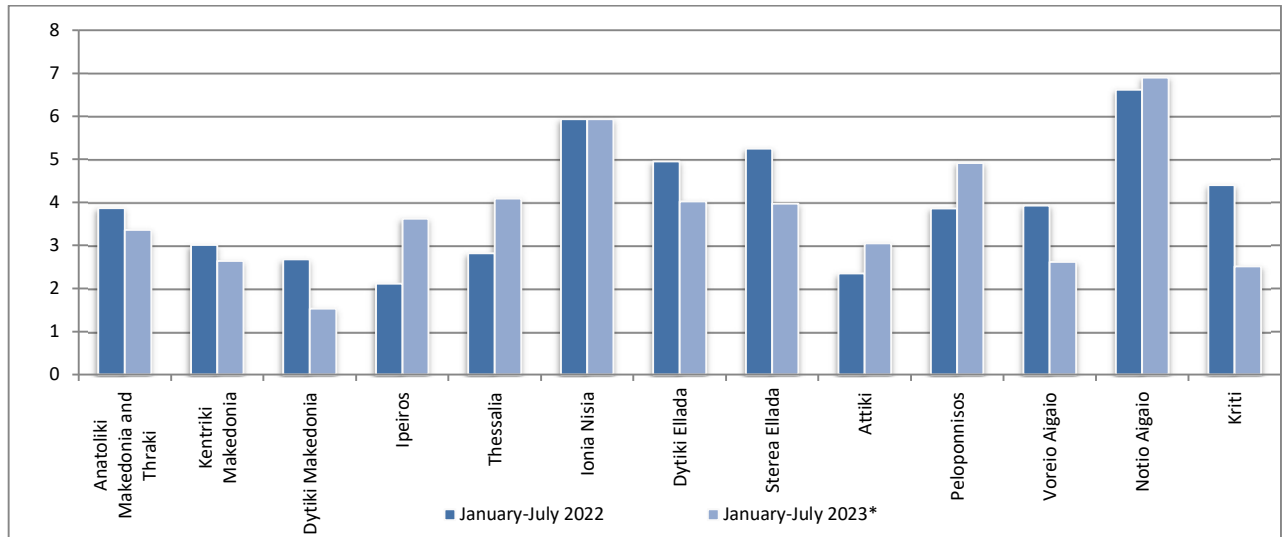
* Provisional data for the period August 2022 – December 2022

Graph 6: Road traffic accidents per 100,000 inhabitants for the period January - July 2022 and 2023*

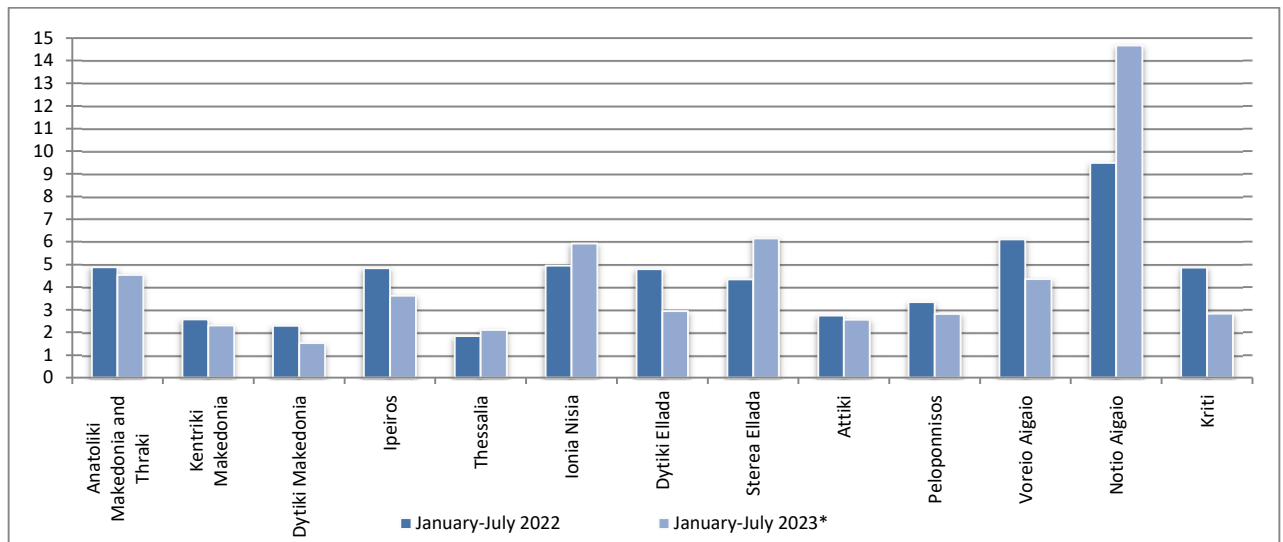


* Provisional data

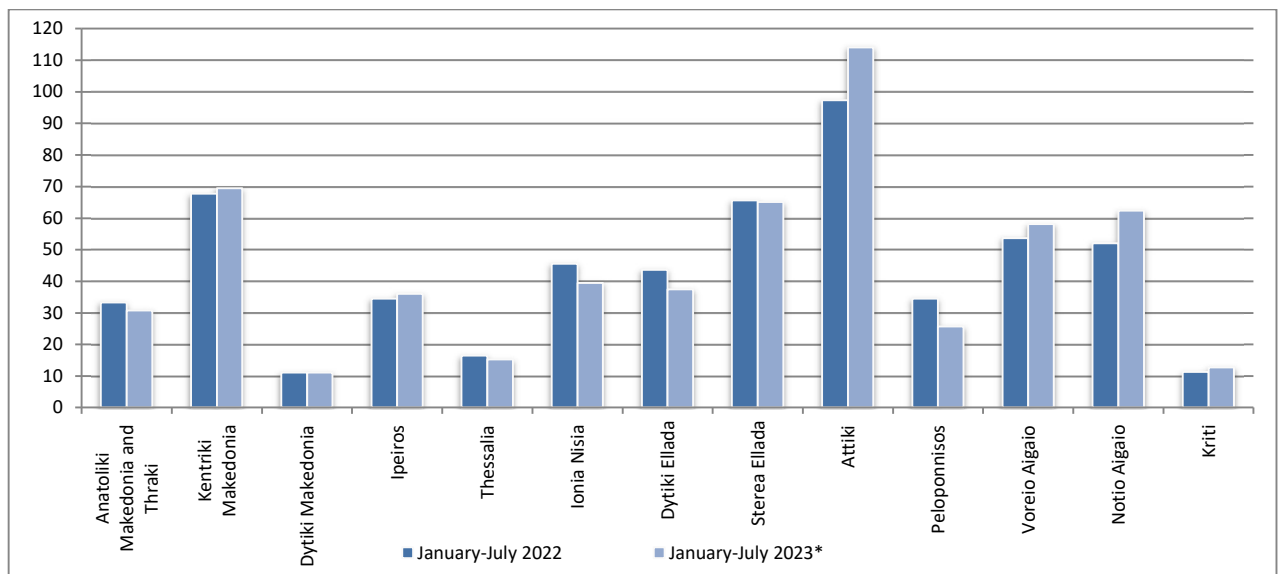
Graph 7: Fatalities per 100,000 inhabitants for the period January - July 2022 and 2023*



Graph 8: Serious injuries per 100,000 inhabitants for the period January - July 2022 and 2023*



Graph 9: Slight injuries per 100,000 inhabitants for the period January - July 2022 and 2023*



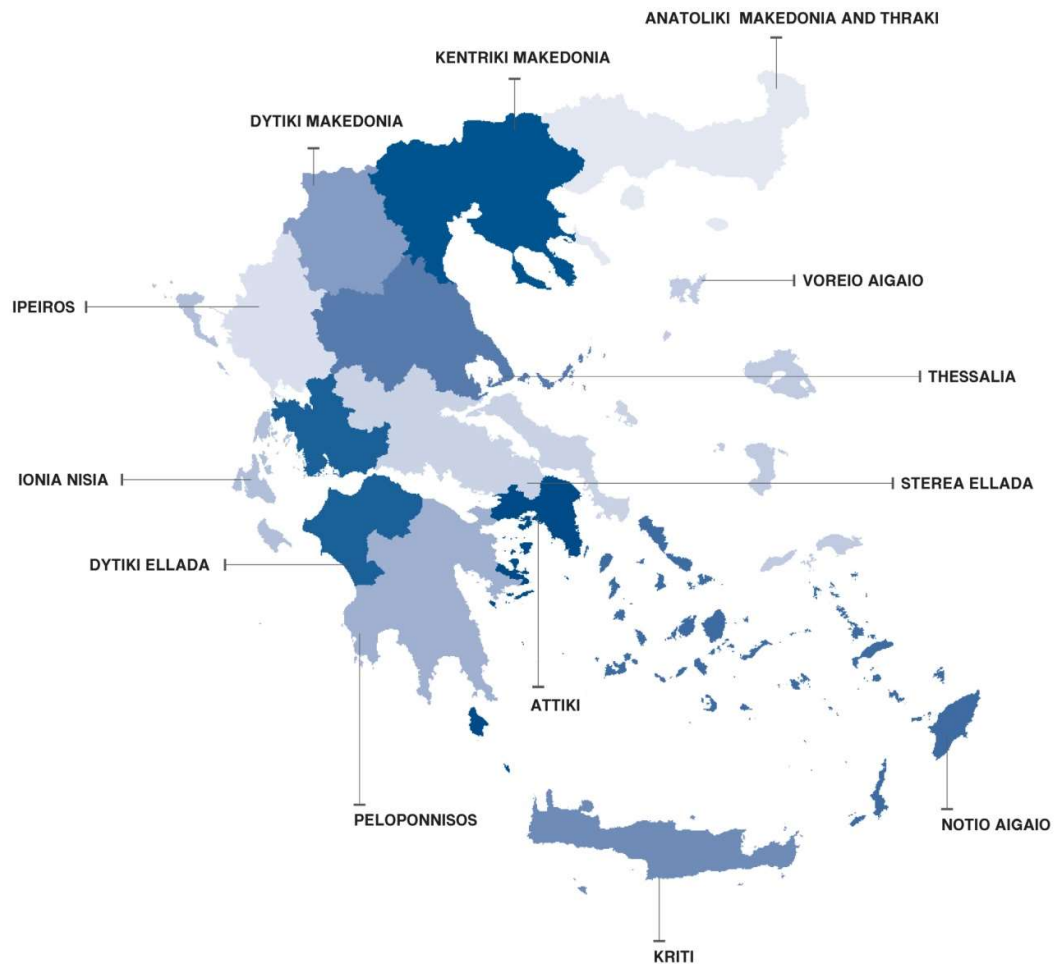
* Provisional data

EXPLANATORY NOTES

Survey on Road Traffic Accidents The Survey on Road Traffic Accidents is conducted on a monthly basis and it records, for each region (see map) and department of Greece and for each month separately, the number of accidents resulting in death or injury, as well as the number of persons injured by categories (drivers, passengers, pedestrians).

On a yearly basis, road traffic accidents are further analyzed. The competent agencies for filling in/collecting the forms on road accidents are the local Police Authorities and the local Port Authorities of Greece.

The lower level of analysis for the place where an injury road accident occurred is the settlement. Data are collected on a monthly basis. The main variables are the following: place of accident, kind of road, casualties, conditions of road surface and type of road.



Legal basis The Survey on Road Traffic Accidents is governed by Council Decision 93/704 of the European Community.

Reference period Monthly.

Availability of data Provisional data are available 2 months after the reference month. Final data are available 12 months after the reference year.

Definitions **Road accident** (injury accident): Any accident involving at least one road motor vehicle in motion on a public road or square to which the public has access (excluding yards, industrial sites or vehicle depot of public transport enterprises), resulting in at least one injured or killed person. Accidents with only material damages are not included.

Fatality (Death): Any person killed immediately or dying within 30 days as a result of an injury accident (This national definition applies since 01.01.1996)

Person injured: Any person who sustained an injury as result of an injury accident, and who normally needs medical treatment.

Serious injury: Any person who sustained an injury as result of an injury accident, such as brain damages, mutilation, multiple injuries, which may result in lack of awareness or which are life-threatening.

Slight injury: Any person injured who sustained minor and not life-threatening injuries.

Vehicle: Include motor vehicles, trolleybuses, motorcycles, bicycles, motorbikes, agricultural and road making machines, animal and hand-drawn vehicles. Railway vehicles are excluded, unless the road accident involves at least one of the aforementioned types of vehicles and therefore, railway vehicles are considered vehicles.

Methodology The forms of the survey are filled in by the local Police Authorities and the local Port Authorities as well.

References More information about Road Traffic Accidents is available on ELSTAT's website and more specifically at the link: <https://www.statistics.gr/en/statistics/-/publication/SDT03/>.