



### PRESS RELEASE

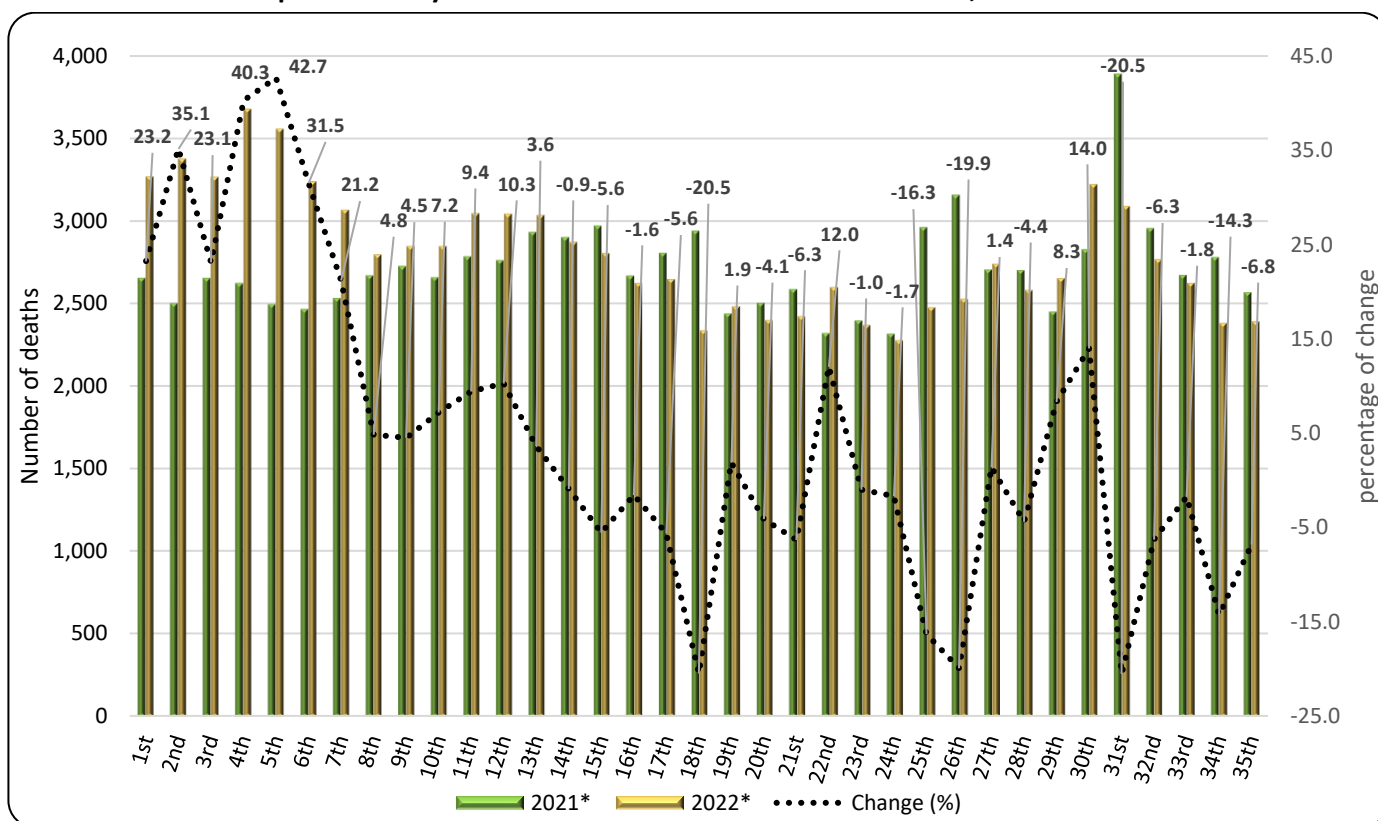
## DATA ON WEEKLY DEATHS: Period 1<sup>st</sup> to 35<sup>th</sup> week, 2022

The Hellenic Statistical Authority (ELSTAT) announces a press release with provisional statistical data depicting the weekly evolution of death counts for the period from the first (1<sup>st</sup>) to the thirty - fifth (35<sup>th</sup>) week (3/1/2022 – 4/9/2022) of 2022. Data refers to the deaths that occurred in the Greek territory during that period due to various causes including deaths attributed to Covid-19.

The data included in this publication are compiled within the framework of the Vital Statistics Survey and are provided from the Municipal Civil Registers of Greece according to the vital events that have been declared and registered up until the date of data transmission. Overdue registrations of deaths are integrated at a later stage in the date of occurrence.

According to these data, **the number of deaths in Greece for the first thirty-five (35) weeks of 2022 (3/1/2022 – 4/9/2022) amounted to 98,317 (49,254 men and 49,063 women), whereas for the corresponding period of 2021 (4/1/2021 – 5/9/2021) had amounted to 94,882 (48,190 men and 46,692 women) recording an increase of 3,435 deaths (3.62%).** An increase of 12,585 deaths (14.68%) is recorded compared to the first thirty-five (35) week cumulative average of the six-year period 2016 - 2021 (85,732 deaths). The annual rates of change for the period 2016 - 2021 amount to 10.17% in 2021 compared to 2020 (86,121), -0.23% in 2020 compared to 2019 (86,322), 6.66% in 2019 compared to 2018 (80,930), -6.33% in 2018 compared to 2017 (86,398) and 8.35% in 2017 compared to 2016 (79,738) (Tables 1, 2, 3 and 4).

**Graph 1. Weekly evolution of deaths for the weeks 1<sup>st</sup> – 35<sup>th</sup>, 2021 and 2022**



\*Provisional data

**Information on methodological issues:**

Population, Employment and Cost of Living Statistics Division  
Population and Migration Statistics Section  
Georgia Thymoglou, tel: +30 213 135 2175, e-mail: [g.thymoglou@statistics.gr](mailto:g.thymoglou@statistics.gr)  
Christos Christou, tel: +30 213 135 2884, e-mail: [c.christou@statistics.gr](mailto:c.christou@statistics.gr)

**Information on data provision:**

tel: +30 213 135 2022, 2308, 2310  
e-mail: [data.dissem@statistics.gr](mailto:data.dissem@statistics.gr)

**Table 1. Weekly evolution of deaths, 2021 and 2022**

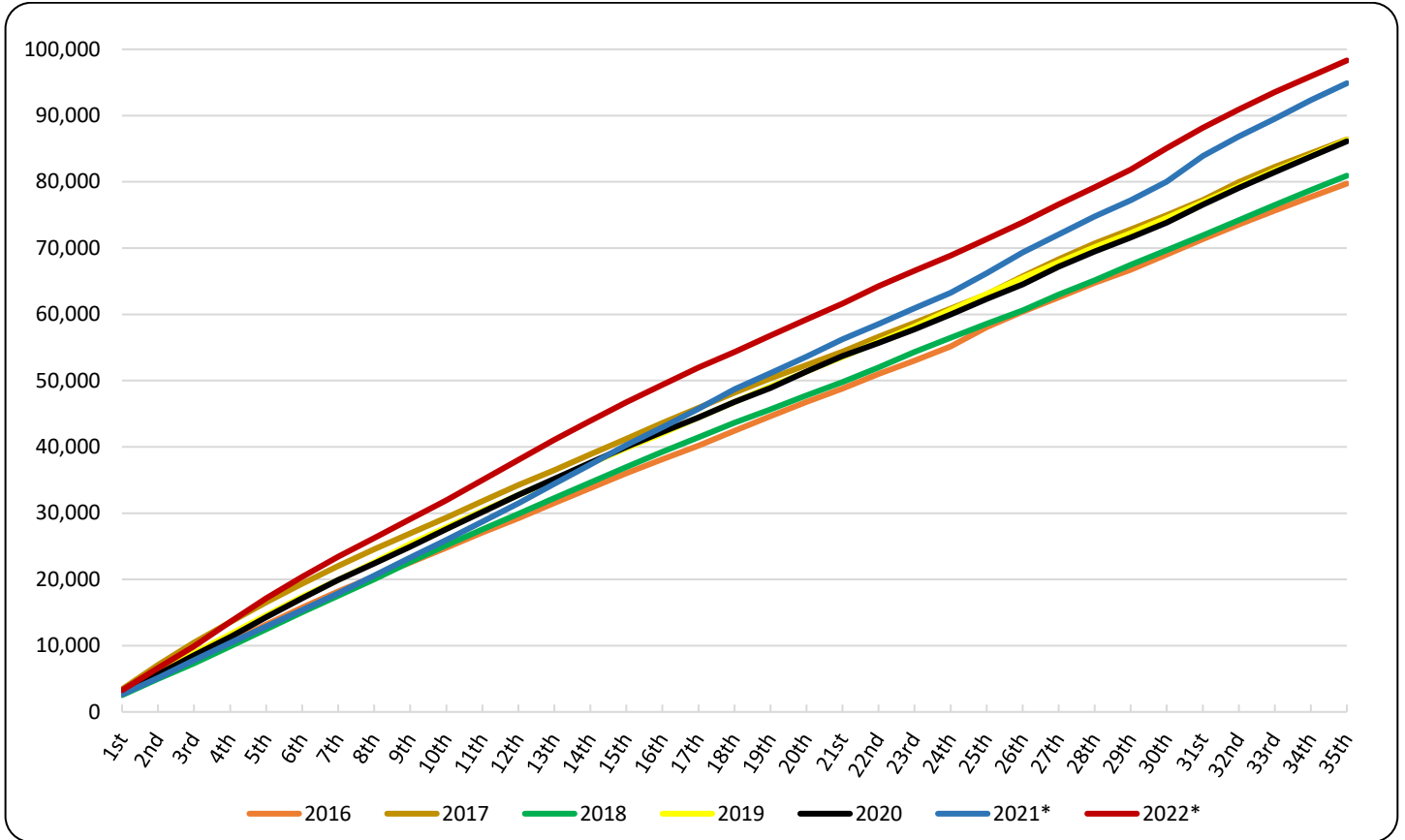
<b>Week</b>	<b>2021*</b>	<b>2022*</b>	<b>Change (%)</b>
1 <sup>st</sup>	2,652	3,268	23.2
2 <sup>nd</sup>	2,498	3,376	35.1
3 <sup>rd</sup>	2,652	3,265	23.1
4 <sup>th</sup>	2,621	3,677	40.3
5 <sup>th</sup>	2,493	3,557	42.7
6 <sup>th</sup>	2,463	3,239	31.5
7 <sup>th</sup>	2,529	3,065	21.2
8 <sup>th</sup>	2,667	2,796	4.8
9 <sup>th</sup>	2,724	2,847	4.5
10 <sup>th</sup>	2,655	2,846	7.2
11 <sup>th</sup>	2,783	3,045	9.4
12 <sup>th</sup>	2,759	3,042	10.3
13 <sup>th</sup>	2,929	3,035	3.6
14 <sup>th</sup>	2,898	2,871	-0.9
15 <sup>th</sup>	2,969	2,804	-5.6
16 <sup>th</sup>	2,665	2,623	-1.6
17 <sup>th</sup>	2,804	2,646	-5.6
18 <sup>th</sup>	2,937	2,335	-20.5
19 <sup>th</sup>	2,436	2,482	1.9
20 <sup>th</sup>	2,500	2,397	-4.1
21 <sup>st</sup>	2,585	2,421	-6.3
22 <sup>nd</sup>	2,318	2,597	12.0
23 <sup>rd</sup>	2,393	2,369	-1.0
24 <sup>th</sup>	2,314	2,275	-1.7
25 <sup>th</sup>	2,959	2,476	-16.3
26 <sup>th</sup>	3,154	2,525	-19.9
27 <sup>th</sup>	2,702	2,739	1.4
28 <sup>th</sup>	2,699	2,580	-4.4
29 <sup>th</sup>	2,449	2,652	8.3
30 <sup>th</sup>	2,825	3,220	14.0
31 <sup>st</sup>	3,886	3,088	-20.5
32 <sup>nd</sup>	2,952	2,766	-6.3
33 <sup>rd</sup>	2,669	2,622	-1.8
34 <sup>th</sup>	2,778	2,381	-14.3
35 <sup>th</sup>	2,565	2,390	-6.8
<b>Total</b>	<b>94,882</b>	<b>98,317</b>	<b>3.62</b>

\*Provisional data

According to the above data, the highest percentage increases of deaths for the period of the first thirty-five (35) weeks of the year 2022 compared to the corresponding period of 2021 were recorded in the 5<sup>th</sup> (31/1/2022 - 6/2/2022), the 4<sup>th</sup> (24/1/2022 - 30/1/2022) and the 2<sup>nd</sup> week (10/1/2022 - 16/1/2022) by 42.7%, 40.3% and 35.1% respectively (Table 1) whereas the most notable decreases were recorded in the 31<sup>st</sup> (1/8/2022 - 7/8/2022), the 18<sup>th</sup> (2/5/2022 - 8/5/2022) and the 26<sup>th</sup> (27/6/2022 - 3/7/2022) by 20.5% for the first two and 19.9% for the third of them.

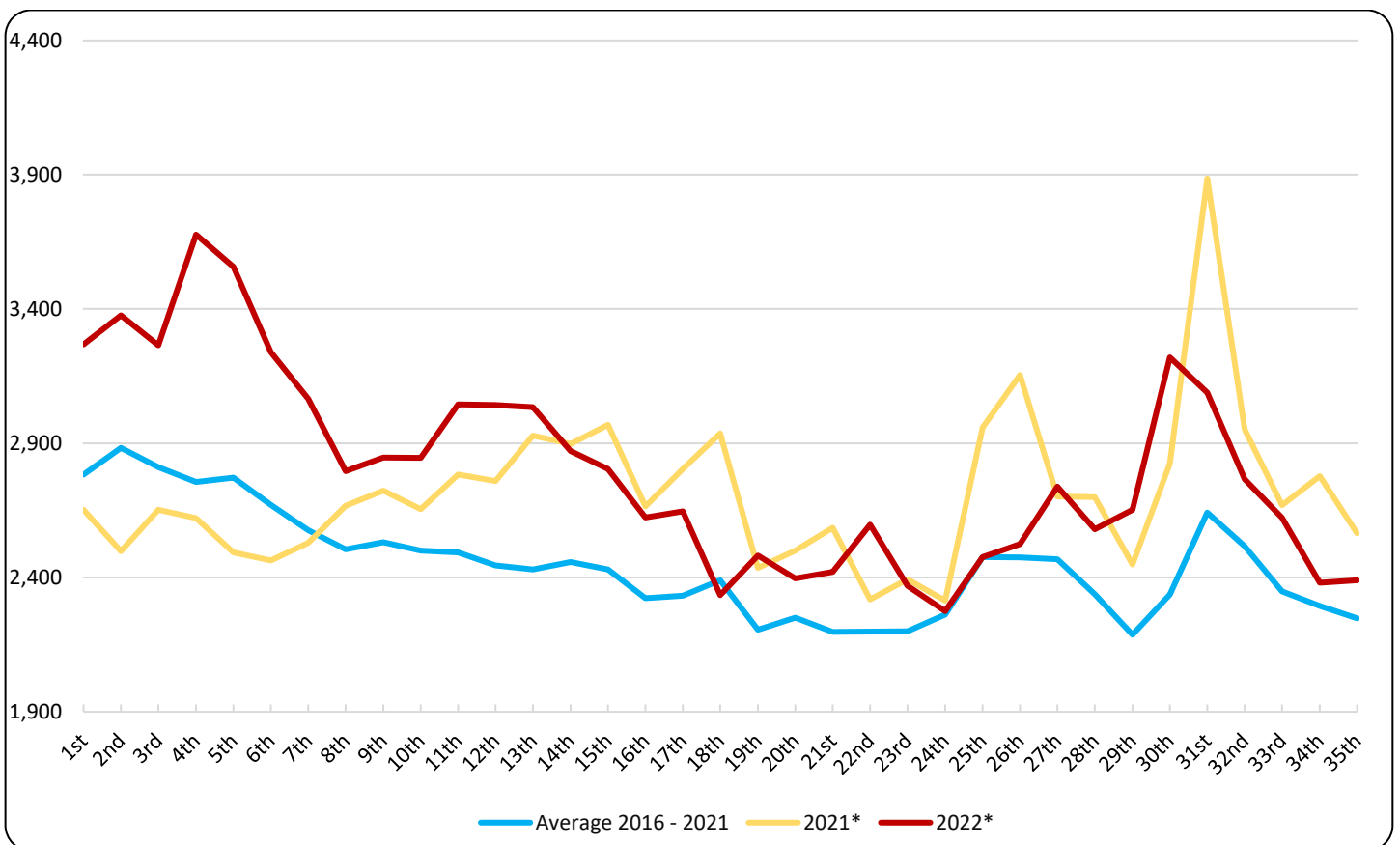
It should be noted that data are updated after integration of more recent data or upon revision of already transmitted data by the Registry Offices. Consequently, data may differ from those already published in previous Press Releases.

**Graph 2. Deaths for the weeks 1<sup>st</sup> – 35<sup>th</sup>, 2016 - 2022 (cumulative)**



\*Provisional data

**Graph 3. Deaths by week for the weeks 1<sup>st</sup> - 35<sup>th</sup>, 2021, 2022 and Average for the period 2016-2021**



\*Provisional data

**Table 2. Deaths for the weeks 1<sup>st</sup> – 35<sup>th</sup>, 2016 - 2022 (cumulative)**

<b>Week</b>	<b>2016</b>	<b>2017</b>	<b>2018</b>	<b>2019</b>	<b>2020</b>	<b>2021*</b>	<b>2022*</b>	<b>Average 2016 - 2021</b>
1st	2,637	3,425	2,533	2,706	2,751	2,652	3,268	2,784
1st - 2nd	5,275	7,105	4,986	5,811	5,674	5,150	6,644	5,667
1st - 3rd	7,876	10,469	7,331	8,850	8,537	7,802	9,909	8,478
1st - 4th	10,528	13,551	9,879	11,710	11,311	10,423	13,586	11,234
1st - 5th	13,177	16,553	12,484	14,603	14,301	12,916	17,143	14,006
1st - 6th	15,771	19,343	15,041	17,375	17,151	15,379	20,382	16,677
1st - 7th	18,207	22,018	17,510	19,938	19,933	17,908	23,447	19,252
1st - 8th	20,422	24,541	20,003	22,598	22,402	20,575	26,243	21,757
1st - 9th	22,561	26,940	22,613	25,367	24,947	23,299	29,090	24,288
1st - 10th	24,809	29,345	25,145	27,886	27,592	25,954	31,936	26,789
1st - 11th	27,064	31,789	27,560	30,356	30,186	28,737	34,981	29,282
1st - 12th	29,249	34,247	29,890	32,747	32,734	31,496	38,023	31,727
1st - 13th	31,508	36,500	32,255	35,079	35,173	34,425	41,058	34,157
1st - 14th	33,783	38,863	34,596	37,492	37,627	37,323	43,929	36,614
1st - 15th	36,010	41,226	36,945	39,804	39,989	40,292	46,733	39,044
1st - 16th	38,110	43,593	39,264	42,024	42,257	42,957	49,356	41,368
1st - 17th	40,191	45,918	41,439	44,427	44,460	45,761	52,002	43,699
1st - 18th	42,437	48,183	43,665	46,787	46,767	48,698	54,337	46,090
1st - 19th	44,646	50,342	45,645	49,110	48,895	51,134	56,819	48,295
1st - 20th	46,767	52,372	47,757	51,378	51,369	53,634	59,216	50,546
1st - 21st	48,794	54,385	49,778	53,588	53,698	56,219	61,637	52,744
1st - 22nd	50,993	56,597	52,001	55,869	55,659	58,537	64,234	54,943
1st - 23rd	52,992	58,718	54,303	58,154	57,760	60,930	66,603	57,143
1st - 24th	55,167	60,854	56,491	60,700	59,971	63,244	68,878	59,405
1st - 25th	58,081	63,024	58,571	63,076	62,325	66,203	71,354	61,880
1st - 26th	60,399	65,756	60,616	65,495	64,506	69,357	73,879	64,355
1st - 27th	62,554	68,298	62,977	67,872	67,177	72,059	76,618	66,823
1st - 28th	64,740	70,716	65,137	70,130	69,481	74,758	79,198	69,160
1st - 29th	66,733	72,806	67,493	72,227	71,618	77,207	81,850	71,347
1st - 30th	69,018	74,949	69,688	74,564	73,853	80,032	85,070	73,684
1st - 31st	71,342	77,256	71,919	76,950	76,567	83,918	88,158	76,325
1st - 32nd	73,554	79,982	74,207	79,341	79,095	86,870	90,924	78,842
1st - 33rd	75,676	82,270	76,492	81,702	81,462	89,539	93,546	81,190
1st - 34th	77,725	84,322	78,752	83,966	83,823	92,317	95,927	83,484
1st - 35th	79,738	86,398	80,930	86,322	86,121	94,882	98,317	85,732
<b>change (%)</b>		<b>8.35</b>	<b>-6.33</b>	<b>6.66</b>	<b>-0.23</b>	<b>10.17</b>	<b>3.62</b>	

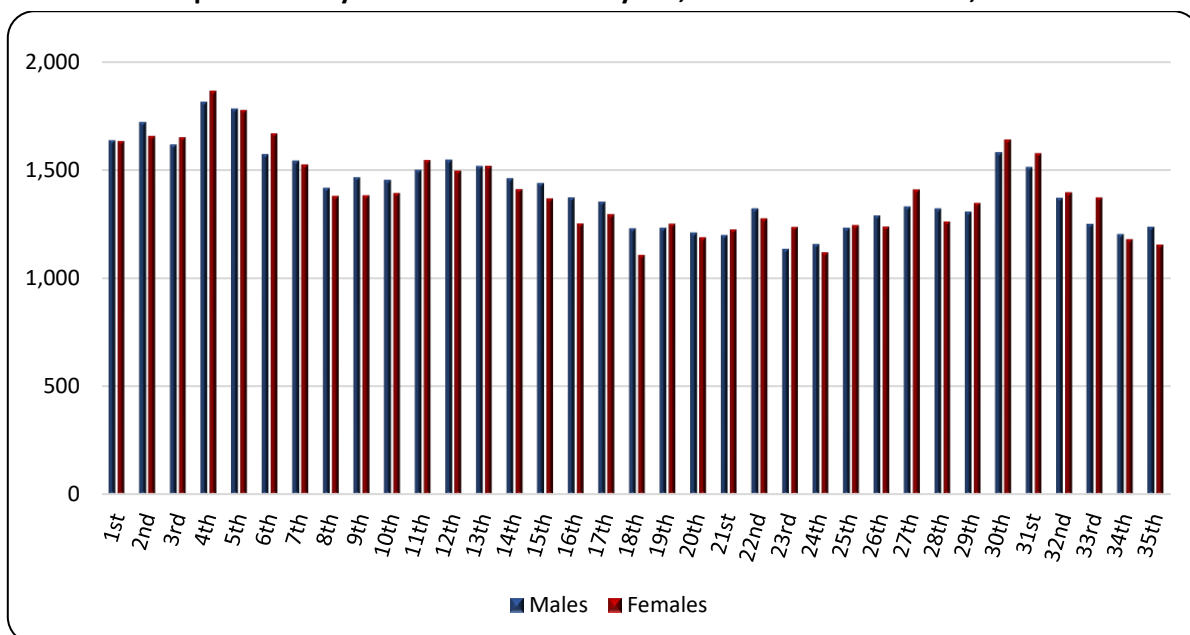
\*Provisional data

**Table 3. Weekly evolution of deaths by sex, for the weeks 1<sup>st</sup> – 35<sup>th</sup>, 2022\***

Week	Total	Males	Females
1 <sup>st</sup>	3,268	1,634	1,634
2 <sup>nd</sup>	3,376	1,718	1,658
3 <sup>rd</sup>	3,265	1,614	1,651
4 <sup>th</sup>	3,677	1,811	1,866
5 <sup>th</sup>	3,557	1,780	1,777
6 <sup>th</sup>	3,239	1,570	1,669
7 <sup>th</sup>	3,065	1,540	1,525
8 <sup>th</sup>	2,796	1,415	1,381
9 <sup>th</sup>	2,847	1,464	1,383
10 <sup>th</sup>	2,846	1,452	1,394
11 <sup>th</sup>	3,045	1,498	1,547
12 <sup>th</sup>	3,042	1,545	1,497
13 <sup>th</sup>	3,035	1,515	1,520
14 <sup>th</sup>	2,871	1,459	1,412
15 <sup>th</sup>	2,804	1,436	1,368
16 <sup>th</sup>	2,623	1,370	1,253
17 <sup>th</sup>	2,646	1,350	1,296
18 <sup>th</sup>	2,335	1,228	1,107
19 <sup>th</sup>	2,482	1,230	1,252
20 <sup>th</sup>	2,397	1,208	1,189
21 <sup>st</sup>	2,421	1,197	1,224
22 <sup>nd</sup>	2,597	1,320	1,277
23 <sup>rd</sup>	2,369	1,133	1,236
24 <sup>th</sup>	2,275	1,155	1,120
25 <sup>th</sup>	2,476	1,230	1,246
26 <sup>th</sup>	2,525	1,287	1,238
27 <sup>th</sup>	2,739	1,329	1,410
28 <sup>th</sup>	2,580	1,319	1,261
29 <sup>th</sup>	2,652	1,304	1,348
30 <sup>th</sup>	3,220	1,579	1,641
31 <sup>st</sup>	3,088	1,510	1,578
32 <sup>nd</sup>	2,766	1,369	1,397
33 <sup>rd</sup>	2,622	1,249	1,373
34 <sup>th</sup>	2,381	1,201	1,180
35 <sup>th</sup>	2,390	1,235	1,155
<b>Total</b>	<b>98,317</b>	<b>49,254</b>	<b>49,063</b>

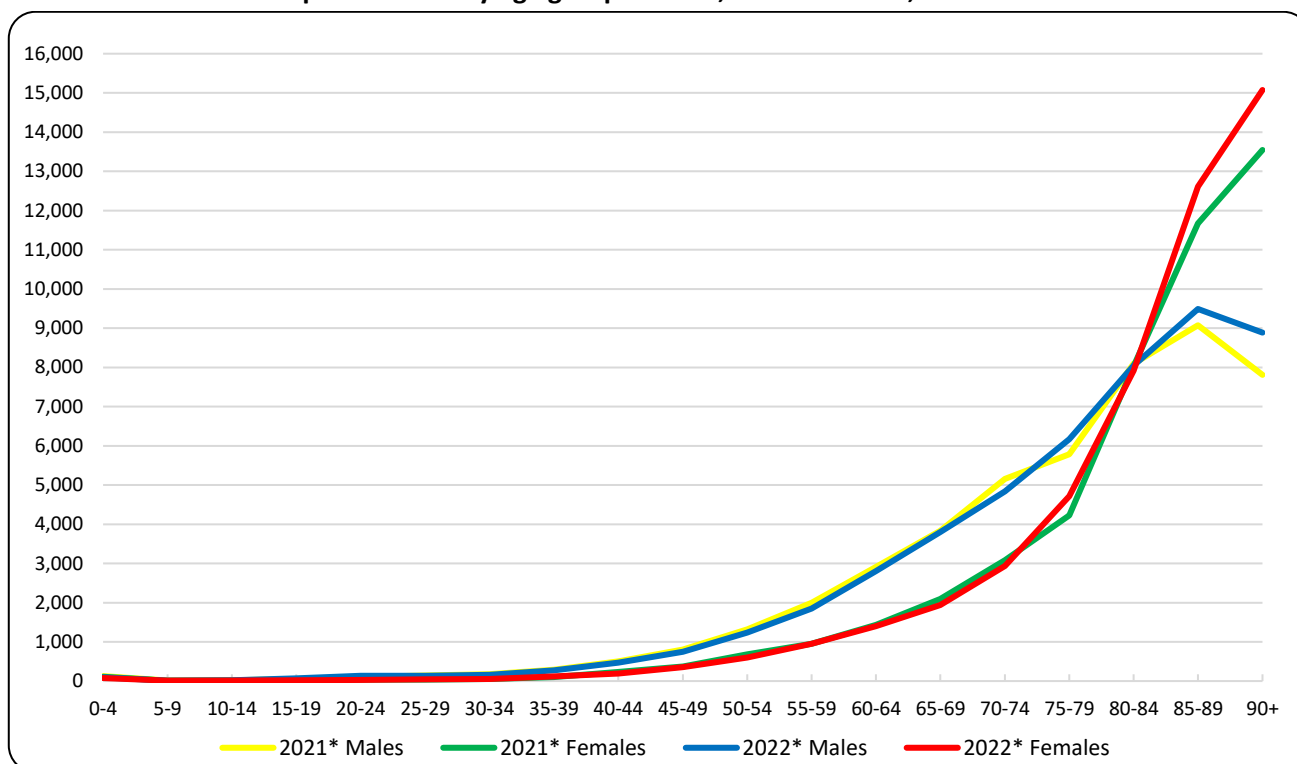
\*Provisional data

**Graph 4. Weekly evolution of deaths by sex, for the weeks 1<sup>st</sup> – 35<sup>th</sup>, 2022\***



\*Provisional data

**Graph 5. Deaths by age group and sex, 1<sup>st</sup> – 35<sup>th</sup> week, 2021 and 2022**



\*Provisional data

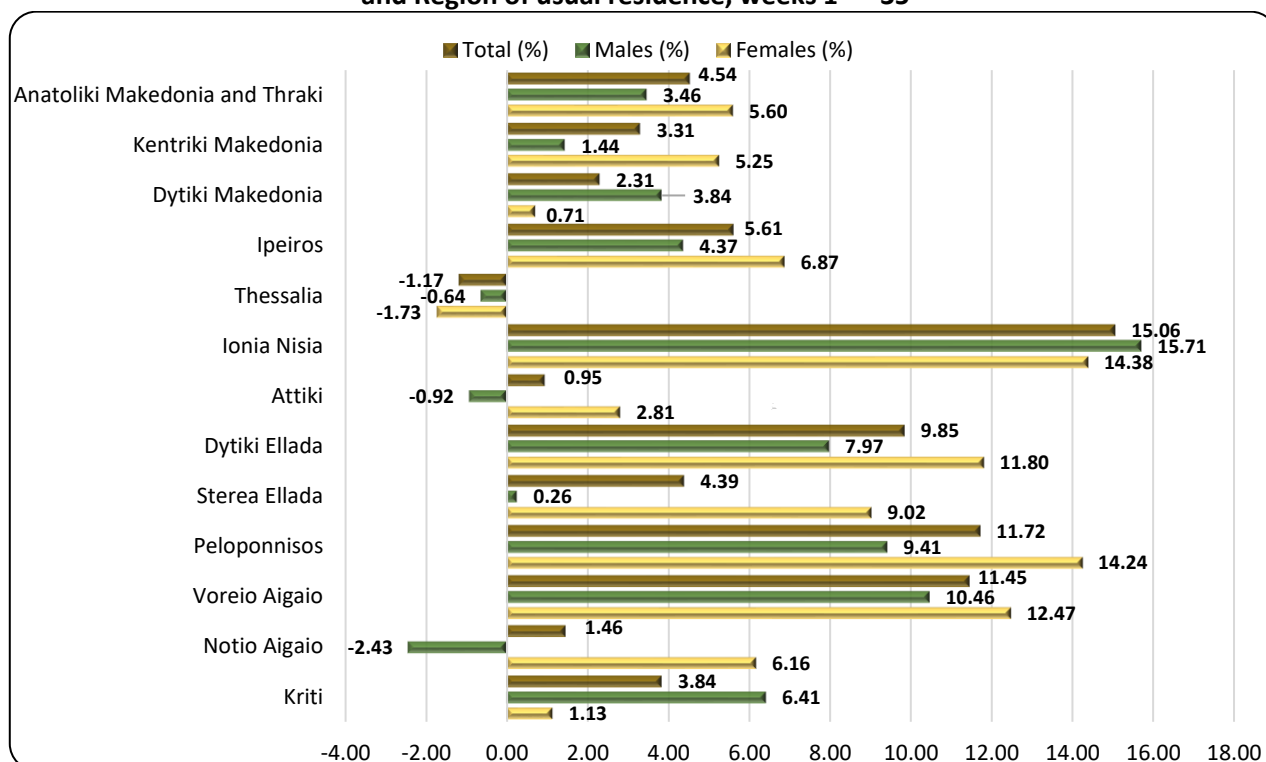
**Table 4. Deaths by age group and sex, weeks 1<sup>st</sup> – 35<sup>th</sup>, 2021 and 2022**

Age Group	2021*			2022*		
	Total	Males	Females	Total	Males	Females
0 - 4	239	130	109	170	94	76
5 - 9	22	14	8	22	11	11
10 - 14	27	17	10	30	18	12
15 - 19	73	51	22	92	68	24
20 - 24	134	100	34	162	134	28
25 - 29	178	140	38	187	138	49
30 - 34	228	178	50	212	161	51
35 - 39	393	289	104	392	275	117
40 - 44	729	500	229	662	470	192
45 - 49	1,174	802	372	1,103	746	357
50 - 54	2,002	1,318	684	1,836	1,237	599
55 - 59	2,946	1,993	953	2,802	1,852	950
60 - 64	4,339	2,908	1,431	4,204	2,802	1,402
65 - 69	5,924	3,830	2,094	5,744	3,803	1,941
70 - 74	8,233	5,154	3,079	7,778	4,841	2,937
75 - 79	10,012	5,783	4,229	10,879	6,168	4,711
80 - 84	16,127	8,096	8,031	15,966	8,048	7,918
85 - 89	20,742	9,074	11,668	22,104	9,490	12,614
90+	21,351	7,806	13,545	23,963	8,889	15,074
Unknown	9	7	2	9	9	0
<b>Total</b>	<b>94,882</b>	<b>48,190</b>	<b>46,692</b>	<b>98,317</b>	<b>49,254</b>	<b>49,063</b>

\*Provisional data

As regards the breakdown of data by age, during the first thirty-five (35) weeks of 2022, more deaths were observed compared to the corresponding period of 2021, in absolute figures, mainly at the age groups over 90 (2,612 deaths), 85 to 89 (1,362 deaths) and 75 to 79 (867 deaths) whereas less deaths were recorded mainly at the age groups 70 to 74 (455 deaths), 65 to 69 (180 deaths) and 50 to 54 (166 deaths) (Table 4).

**Graph 6. Annual change of deaths 2022\*/2021\* (%) by sex and Region of usual residence, weeks 1<sup>st</sup> – 35<sup>th</sup>**



\*Provisional data

**Table 5. Annual change of deaths 2022/2021 (%) by sex and Region of usual residence, weeks 1<sup>st</sup> – 35<sup>th</sup>**

Region	2021*			2022*			Change (%)		
	Total	Males	Females	Total	Males	Females	Total	Males	Females
Anatoliki Makedonia and Thraki	5,512	2,743	2,769	5,762	2,838	2,924	4.54	3.46	5.60
Kentriki Makedonia	16,829	8,586	8,243	17,386	8,710	8,676	3.31	1.44	5.25
Dytiki Makedonia	2,603	1,328	1,275	2,663	1,379	1,284	2.31	3.84	0.71
Ipeiros	2,995	1,511	1,484	3,163	1,577	1,586	5.61	4.37	6.87
Thessalia	7,083	3,609	3,474	7,000	3,586	3,414	-1.17	-0.64	-1.73
Ionia Nisia	1,819	936	883	2,093	1,083	1,010	15.06	15.71	14.38
Attiki	32,977	16,431	16,546	33,291	16,280	17,011	0.95	-0.92	2.81
Dytiki Ellada	5,899	3,010	2,889	6,480	3,250	3,230	9.85	7.97	11.80
Stereia Ellada	5,120	2,704	2,416	5,345	2,711	2,634	4.39	0.26	9.02
Peloponnisos	5,392	2,815	2,577	6,024	3,080	2,944	11.72	9.41	14.24
Voreio Aigaio	1,624	822	802	1,810	908	902	11.45	10.46	12.47
Notio Aigaio	2,255	1,233	1,022	2,288	1,203	1,085	1.46	-2.43	6.16
Kriti	4,717	2,417	2,300	4,898	2,572	2,326	3.84	6.41	1.13
Unknown	57	45	12	114	77	37	100.00	71.11	208.33
<b>Total</b>	<b>94,882</b>	<b>48,190</b>	<b>46,692</b>	<b>98,317</b>	<b>49,254</b>	<b>49,063</b>	<b>3.62</b>	<b>2.21</b>	<b>5.08</b>
Abroad	365	248	117	536	361	175	46.85	45.56	49.57

\*Provisional data

As regards the breakdown of data by place of usual residence of the deceased person, during the first thirty-five (35) weeks of 2022, an increase of deaths is observed in twelve (12) Regions of the Country as compared to the corresponding period of 2021 and a decrease in one (1). The most notable increase, in absolute figures, is observed in the Regions of Peloponnisos, Dytiki Ellada and Kentriki Makedonia namely by 632, 581 and 557 deaths respectively, whereas the decrease is observed in the Region of Thessalia by 83 deaths (Graph 6, Table 5).

## EXPLANATORY NOTES

**Vital Statistics-Data on weekly deaths** For the Vital statistics Survey, data are provided by Civil Register Offices from all over the Country. Data presented in this press release refer to the weekly evolution of death counts according to the international standard of weeks ISO 8601. This is a data processing for the purpose of depicting the evolution of deaths during the Covid-19 pandemic.

**Reference periods** 2021: 4/1/2021 - 5/9/2021  
2022: 3/1/2022 - 4/9/2022

**Legal Framework** Law 344/76 concerning the “Registration of vital events” which lays down the obligations of the Civil Register Offices to collect and then transmit the data, as well as by Law 3832/2010 on the “Greek Statistical System”, as amended.

**Coverage** The Vital Statistics survey is an exhaustive survey and covers all deaths of usual resident population that occur in the Greek territory.

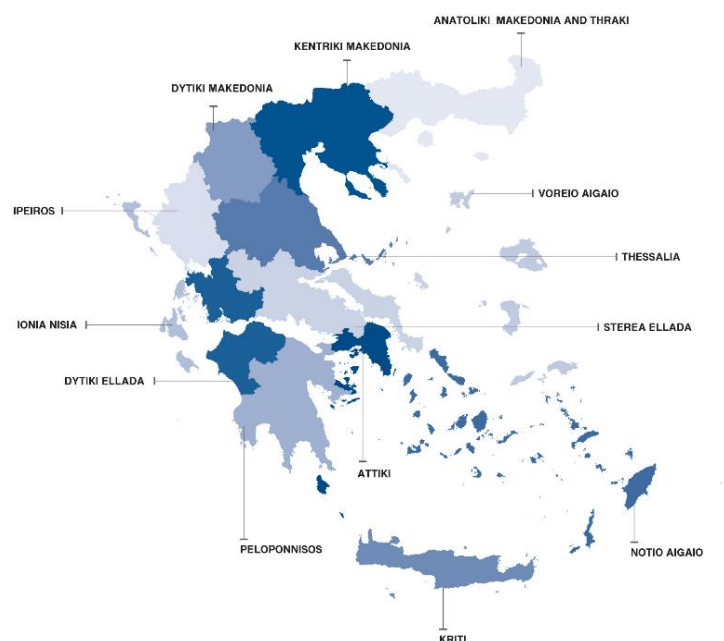
**Definitions** All deaths of usual residents taking place in the Greek territory are recorded, regardless of the cause of death. Deaths of usual resident population of other countries are also recorded but not counted. The deaths of migrants-refugees during their attempt to approach the Greek islands from the Turkish shores (drownings) are not included.

Causes of death are defined according to the International Statistical Classification of Diseases and Related Health Problems (ICD-10) and basic categories are Diseases of the Circulatory System, Diseases of the Respiratory System, Neoplasms, Infectious and Parasitic Diseases, Violent deaths and other causes, Covid-19 included.

**Methodology** Data on deaths and vital statistics undergo the necessary quality checks, are processed, and presented in the form of tables.

**Geographical classification** Geographical classification is based on the Nomenclature of Territorial Units for Statistics (NUTS). Data are disseminated at Country and Region (NUTS2) level.

**Map of the Regions (NUTS2) of Greece**





**International  
Standard of  
Dates**

According to the international standard ISO 8601 the first thirty-five (35) weeks for 2021 and 2022 are defined as follows:

WEEK	2021	2022
1 <sup>st</sup>	4/1/2021 - 10/1/2021	03/01/2022 - 9/1/2022
2 <sup>nd</sup>	11/1/2021 - 17/1/2021	10/01/2022 - 16/1/2022
3 <sup>rd</sup>	18/1/2021 - 24/1/2021	17/01/2022 - 23/1/2022
4 <sup>th</sup>	25/1/2021 - 31/1/2021	24/01/2022 - 30/1/2022
5 <sup>th</sup>	1/2/2021 - 7/2/2021	31/01/2022 - 6/2/2022
6 <sup>th</sup>	8/2/2021 - 14/2/2021	7/2/2022 - 13/2/2022
7 <sup>th</sup>	15/2/2021 - 21/2/2021	14/2/2022 - 20/2/2022
8 <sup>th</sup>	22/2/2021 - 28/2/2021	21/2/2022 - 27/2/2022
9 <sup>th</sup>	1/3/2021 - 7/3/2021	28/2/2022 - 6/3/2022
10 <sup>th</sup>	8/3/2021 - 14/3/2021	7/3/2022 - 13/3/2022
11 <sup>th</sup>	15/3/2021 - 21/3/2021	14/3/2022 - 20/3/2022
12 <sup>th</sup>	22/3/2021 - 28/3/2021	21/3/2022 - 27/3/2022
13 <sup>th</sup>	29/3/2021 - 4/4/2021	28/3/2022 - 3/4/2022
14 <sup>th</sup>	5/4/2021 - 11/4/2021	4/4/2022 - 10/4/2022
15 <sup>th</sup>	12/4/2021 - 18/4/2021	11/4/2022 - 17/4/2022
16 <sup>th</sup>	19/4/2021 - 25/4/2021	18/4/2022 - 24/4/2022
17 <sup>th</sup>	26/4/2021 - 2/5/2021	25/4/2022 - 1/5/2022
18 <sup>th</sup>	3/5/2021 - 9/5/2021	2/5/2022 - 8/5/2022
19 <sup>th</sup>	10/5/2021 - 16/5/2021	9/5/2022 - 15/5/2022
20 <sup>th</sup>	17/5/2021 - 23/5/2021	16/5/2022 - 22/5/2022
21 <sup>st</sup>	24/5/2021 - 30/5/2021	23/5/2022 - 29/5/2022
22 <sup>nd</sup>	31/5/2021 - 6/6/2021	30/5/2022 - 5/6/2022
23 <sup>rd</sup>	7/6/2021 - 13/6/2021	6/6/2022 - 12/6/2022
24 <sup>th</sup>	14/6/2021 - 20/6/2021	13/6/2022 - 19/6/2022
25 <sup>th</sup>	21/6/2021 - 27/6/2021	20/6/2022 - 26/6/2022
26 <sup>th</sup>	28/6/2021 - 4/7/2021	27/6/2022 - 3/7/2022
27 <sup>th</sup>	5/7/2021 - 11/7/2021	4/7/2022 - 10/7/2022
28 <sup>th</sup>	12/7/2021 - 18/7/2021	11/7/2022 - 17/7/2022
29 <sup>th</sup>	19/7/2021 - 25/7/2021	18/7/2022 - 24/7/2022
30 <sup>th</sup>	26/7/2021 - 1/8/2021	25/7/2022 - 31/7/2022
31 <sup>st</sup>	2/8/2021 - 8/8/2021	1/8/2022 - 7/8/2022
32 <sup>nd</sup>	9/8/2021 - 15/8/2021	8/8/2022 - 14/8/2022
33 <sup>rd</sup>	16/8/2021 - 22/8/2021	15/8/2022 - 21/8/2022
34 <sup>th</sup>	23/8/2021 - 29/8/2021	22/8/2022 - 28/8/2022
35 <sup>th</sup>	30/8/2021 - 5/9/2021	29/8/2022 - 4/9/2022

**References:**

More information on deaths and Vital Statistics is available on the website of ELSTAT: <https://www.statistics.gr>, following the link: Statistics, Population and Social Conditions, Demography.