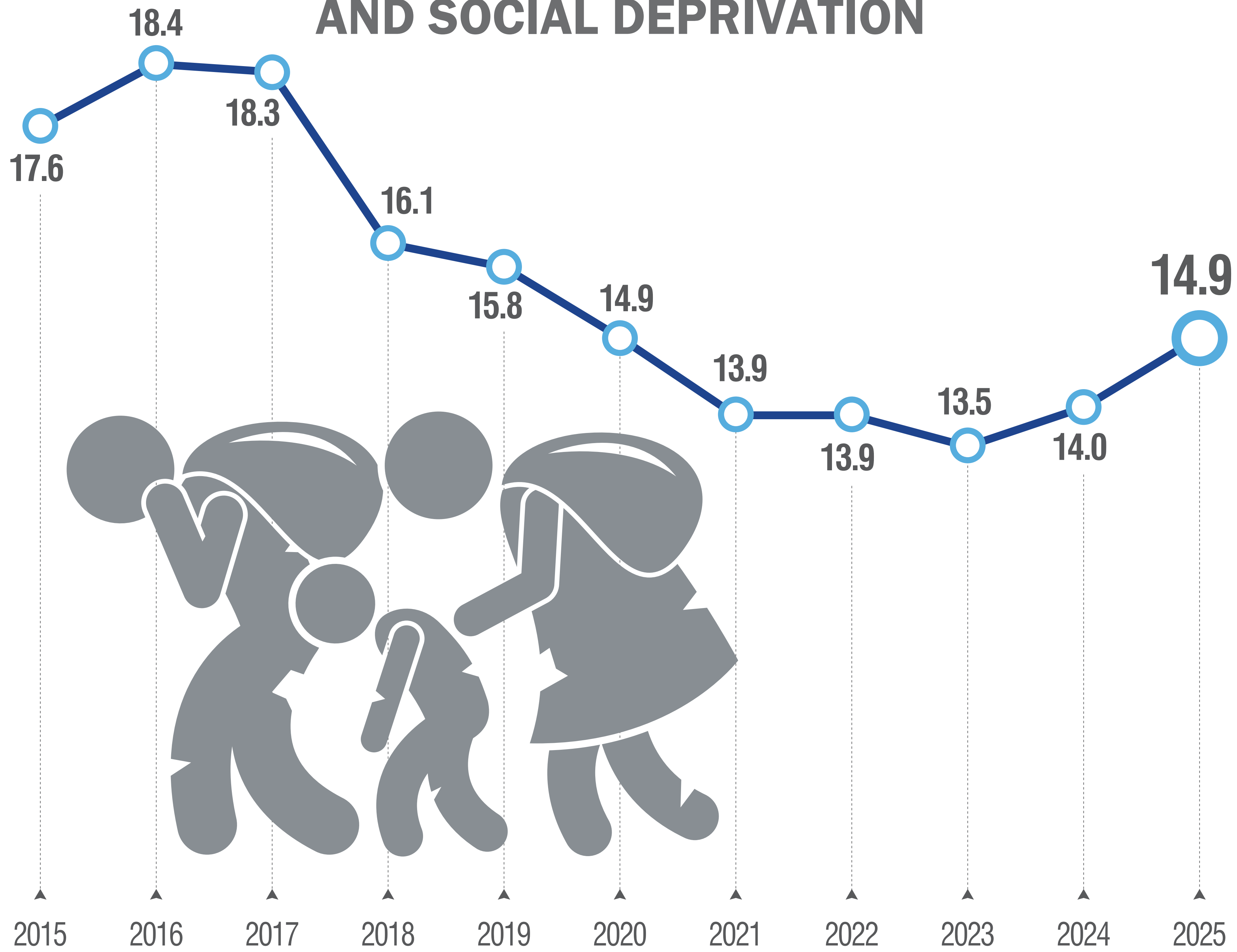
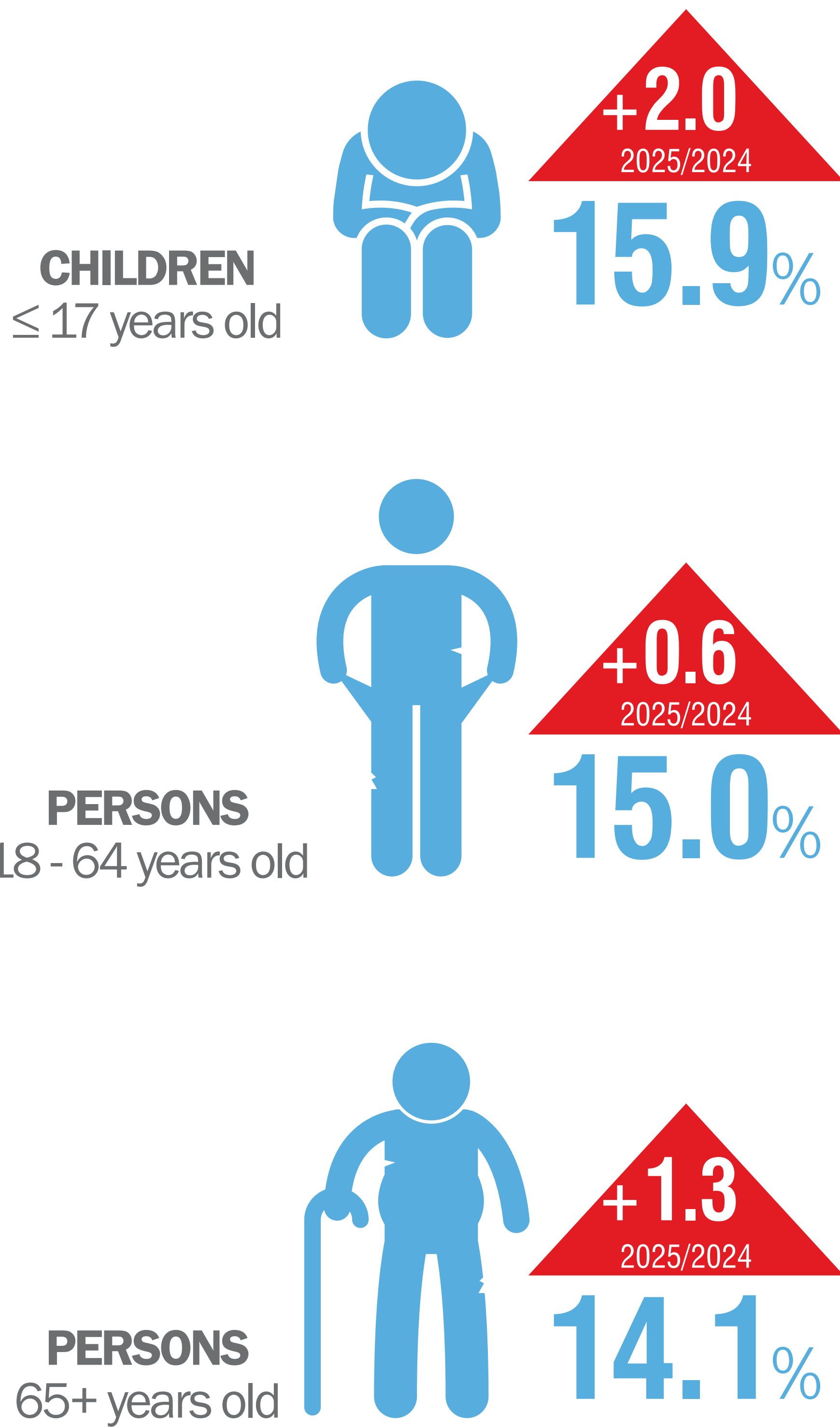


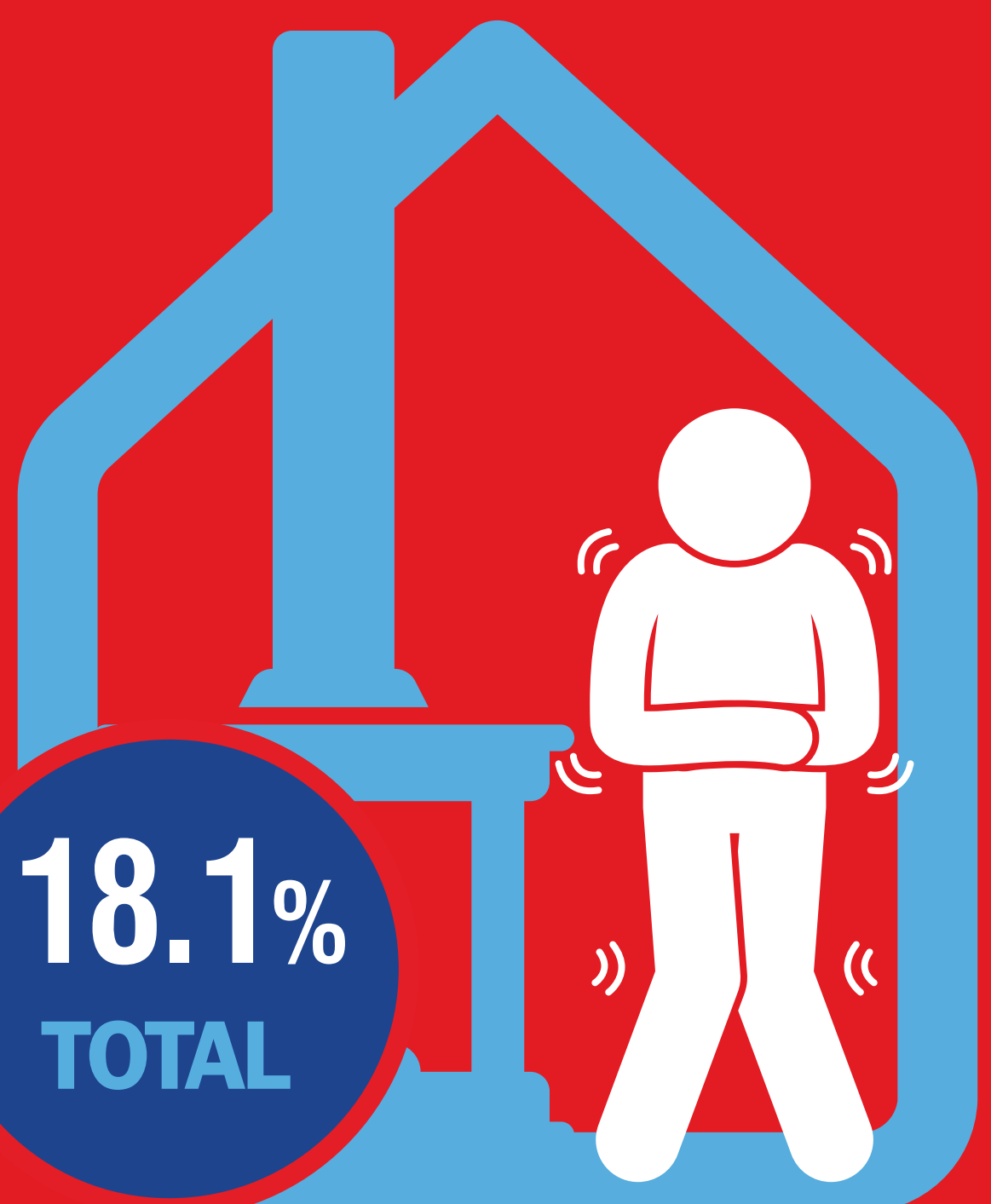
SEVERE MATERIAL AND SOCIAL DEPRIVATION AND LIVING CONDITIONS, 2025

(income reference year 2024)

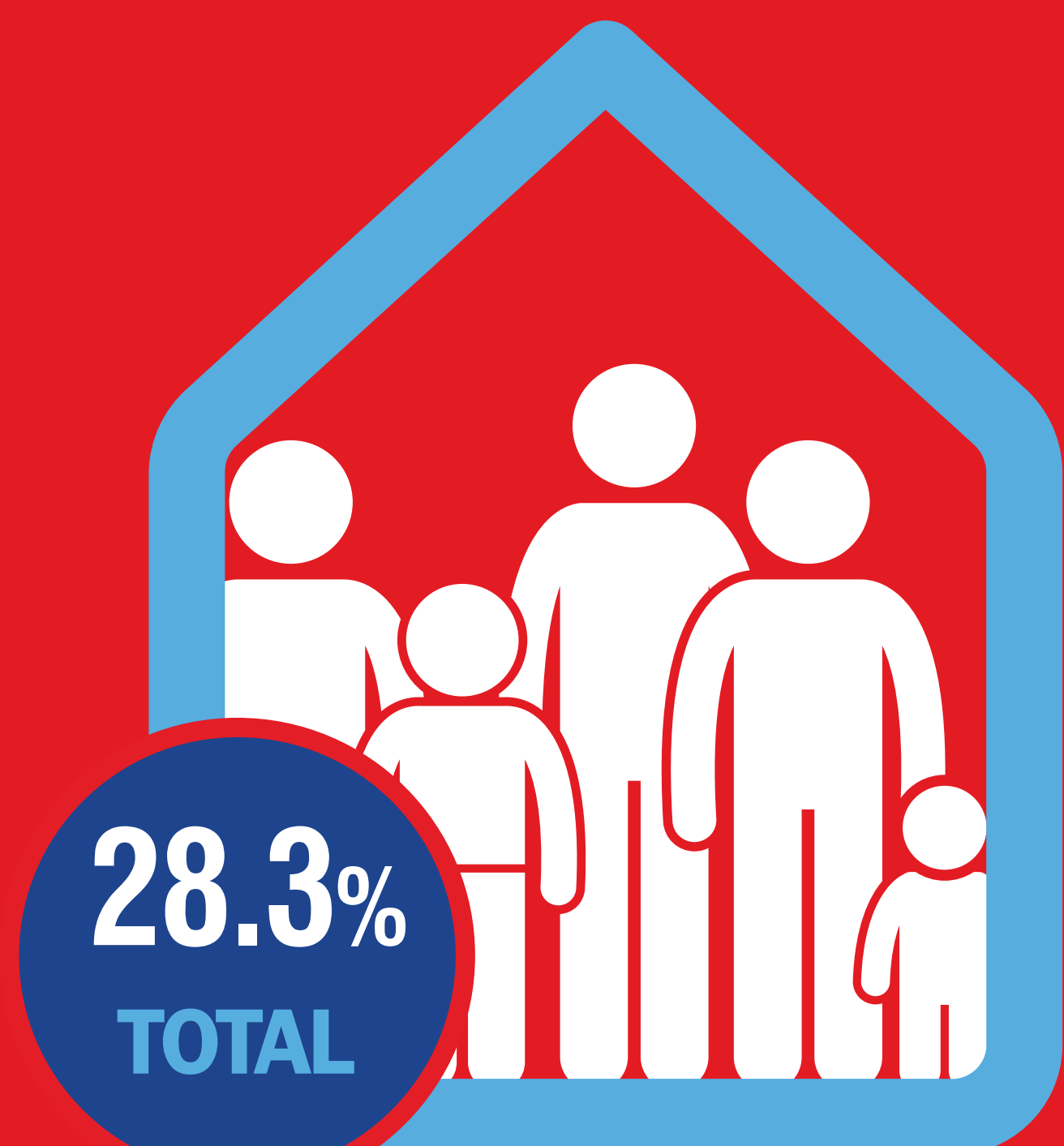
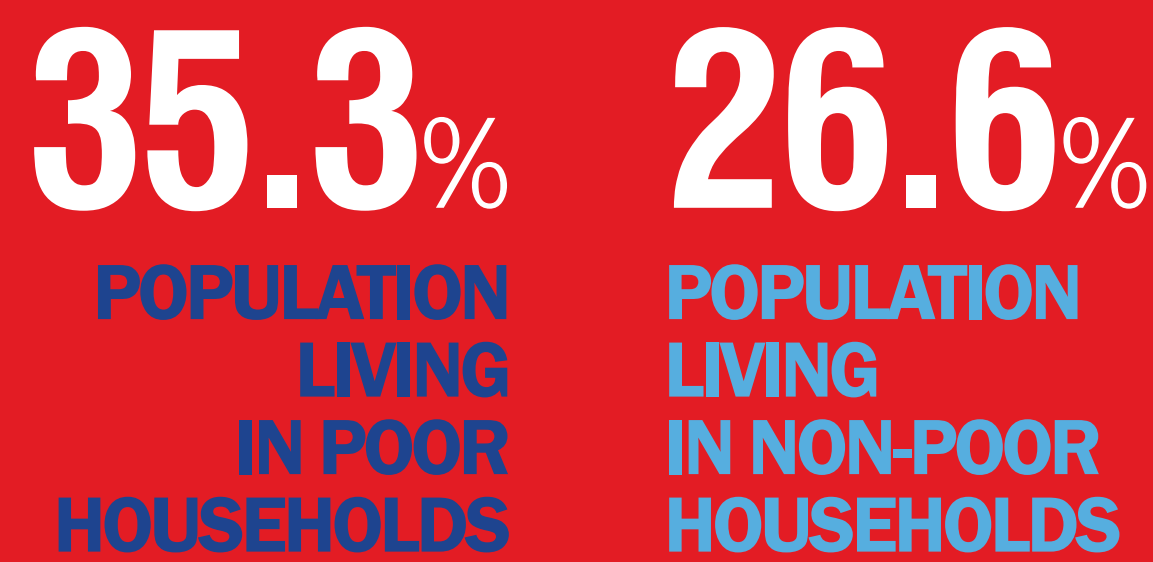
POPULATION IN SEVERE MATERIAL AND SOCIAL DEPRIVATION



INABILITY TO KEEP HOME ADEQUATELY WARM / COLD



LIVE IN OVERCROWDED HOUSEHOLDS



INABILITY TO FULFILL BASIC NEEDS (%)

● TOTAL ● POPULATION LIVING IN POOR HOUSEHOLDS ● POPULATION LIVING IN NON-POOR HOUSEHOLDS

