

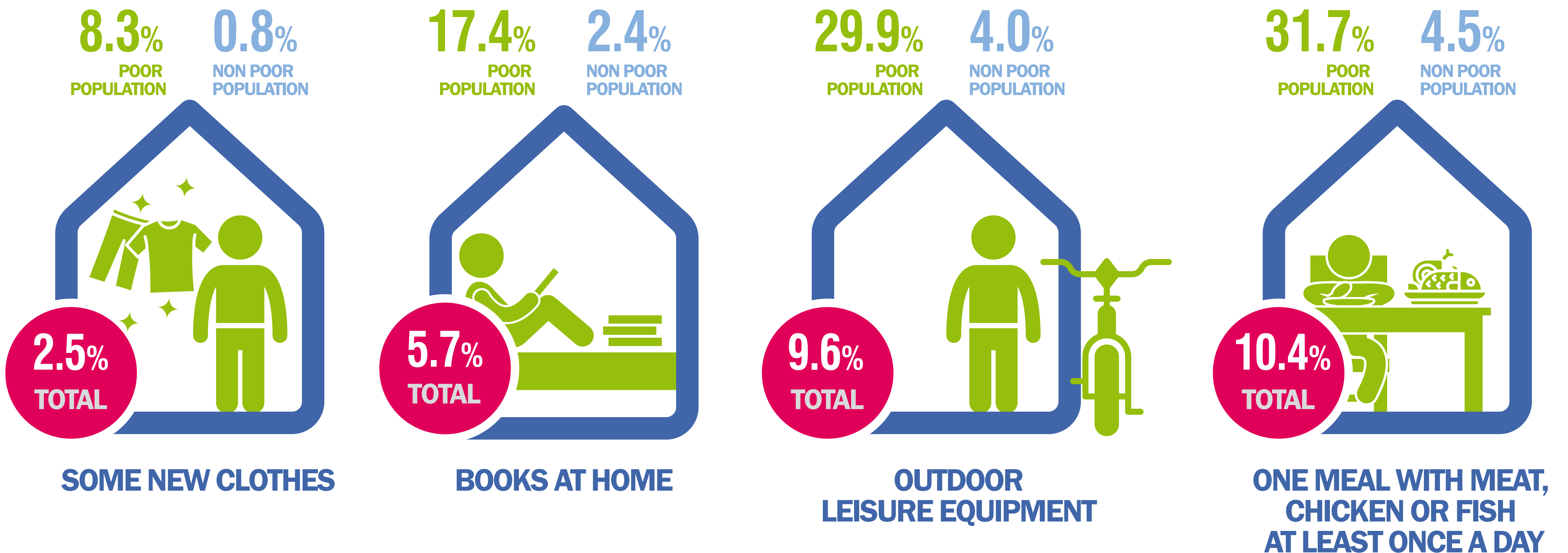
LIVING CONDITIONS OF CHILDREN, 2024*

up to 15 years old



Poor population: The percentage of population under the poverty threshold.
Non poor population: The percentage of population over the poverty threshold.

POPULATION THAT CANNOT AFFORD TO PROVIDE THEIR CHILDREN WITH

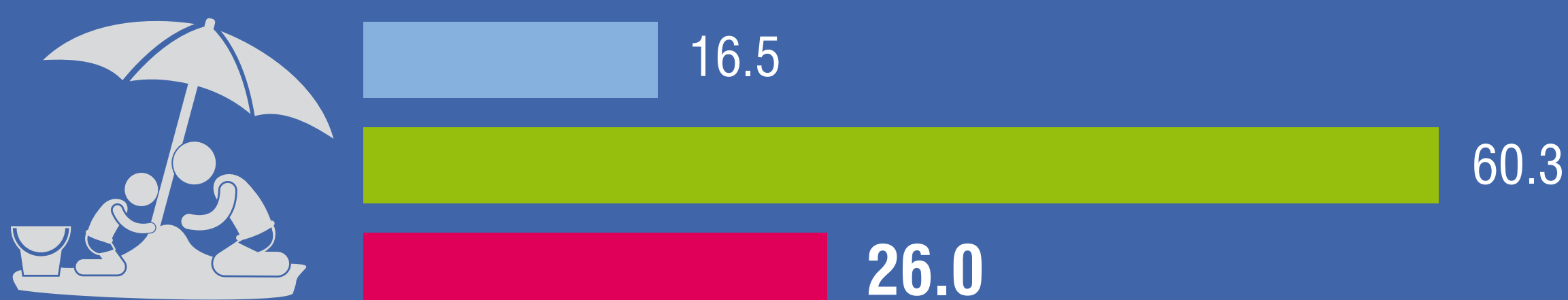


CANNOT AFFORD (%)

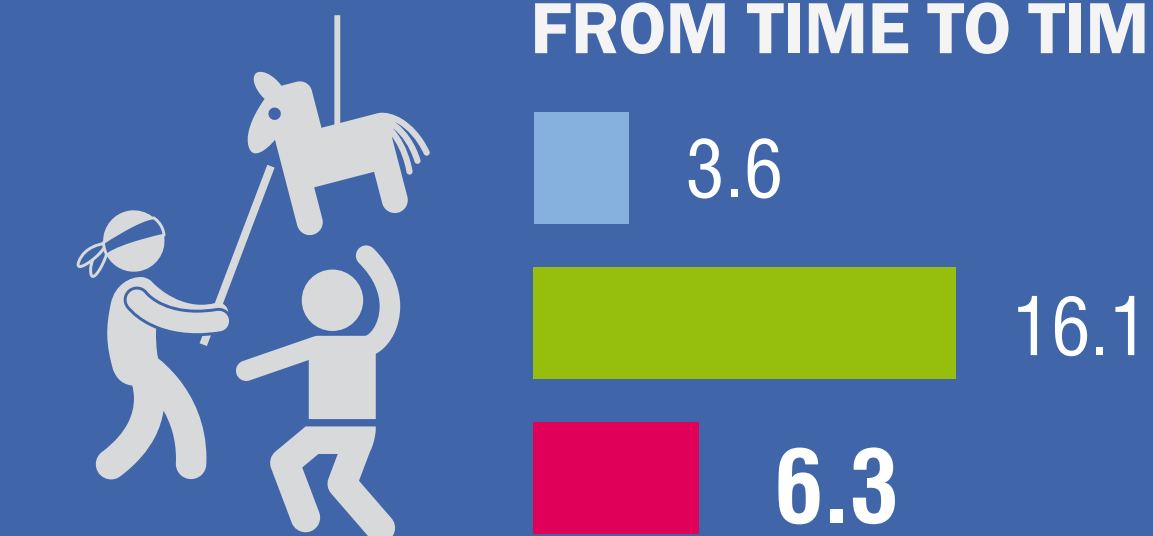
THEIR CHILDREN'S BASIC NEEDS

● NON POOR POPULATION ● POOR POPULATION ● TOTAL

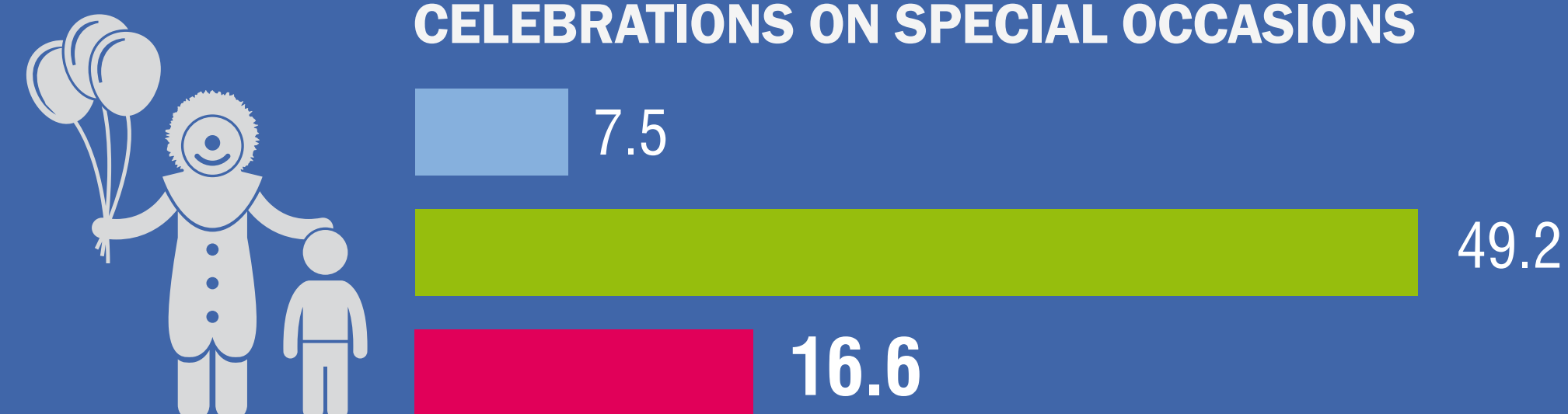
1 WEEK HOLIDAY



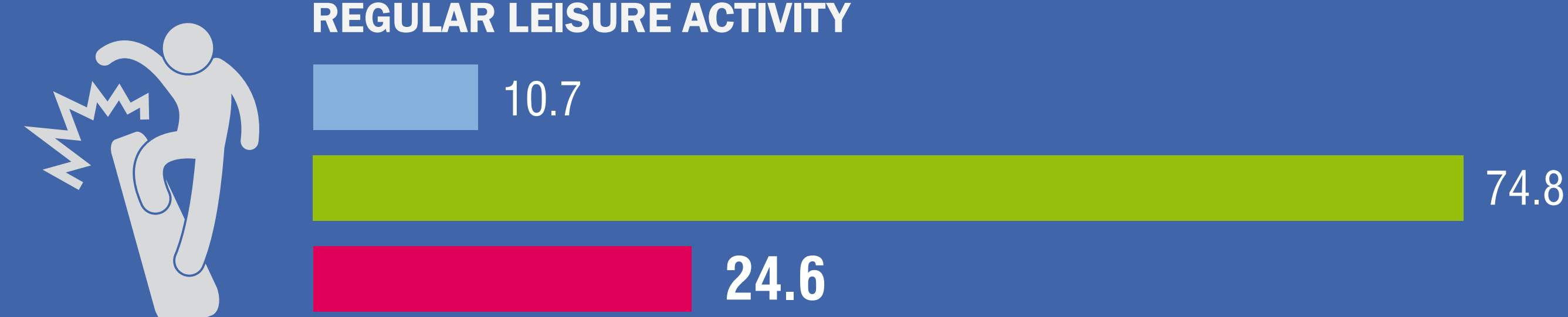
INVITING FRIENDS AROUND TO PLAY AND EAT FROM TIME TO TIME



CELEBRATIONS ON SPECIAL OCCASIONS



REGULAR LEISURE ACTIVITY



A SUITABLE PLACE AT HOME FOR THEIR CHILDREN'S SCHOOL STUDY

12.4% POOR POPULATION
7.1% NON POOR POPULATION

8.3%
TOTAL



THEIR CHILDREN'S PARTICIPATION IN SCHOOL TRIPS AND EVENTS THAT COST MONEY

43.2% POOR POPULATION
5.7% NON POOR POPULATION

14.1%
TOTAL



* Survey on Income and Living Conditions