

# Users and Producers of Official Statistics: Relationship in the Portuguese Statistical Council

---

ESAC-NUCS WORKSHOP – ATHENS – 26 & 27 MARCH 2025

DAY 2 – PART 2

*INVOLVING THE USERS IN THE PREPARATION OF THE  
STATISTICAL PROGRAMMES: NUCS PRACTICES*

# Summary

---

- CSE Legal Basis
- CSE Structure
- CSE Composition
- CSE Functioning
- Relationship between users and producers

# CSE Legal Basis

## Law No. 22/2008

- Establishes principles, rules and structure of the National Statistical System



Framework for the production of **official statistics** in Portugal



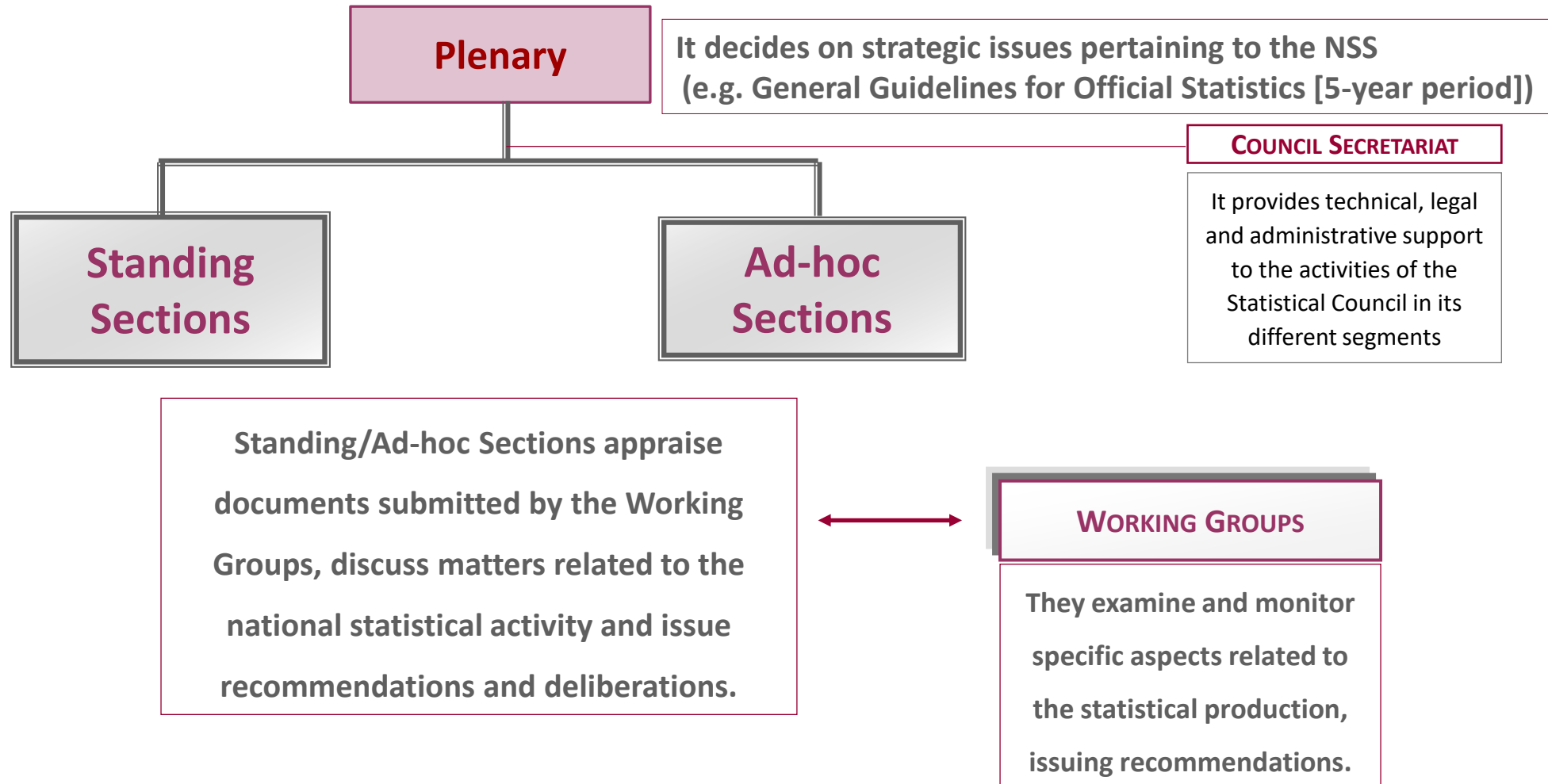
*Statistical  
Council*

*NSS general **guidance**  
and **consultation**  
amongst its members*

**CSE**  
Conselho Superior de Estatística

<https://cse.ine.pt/>

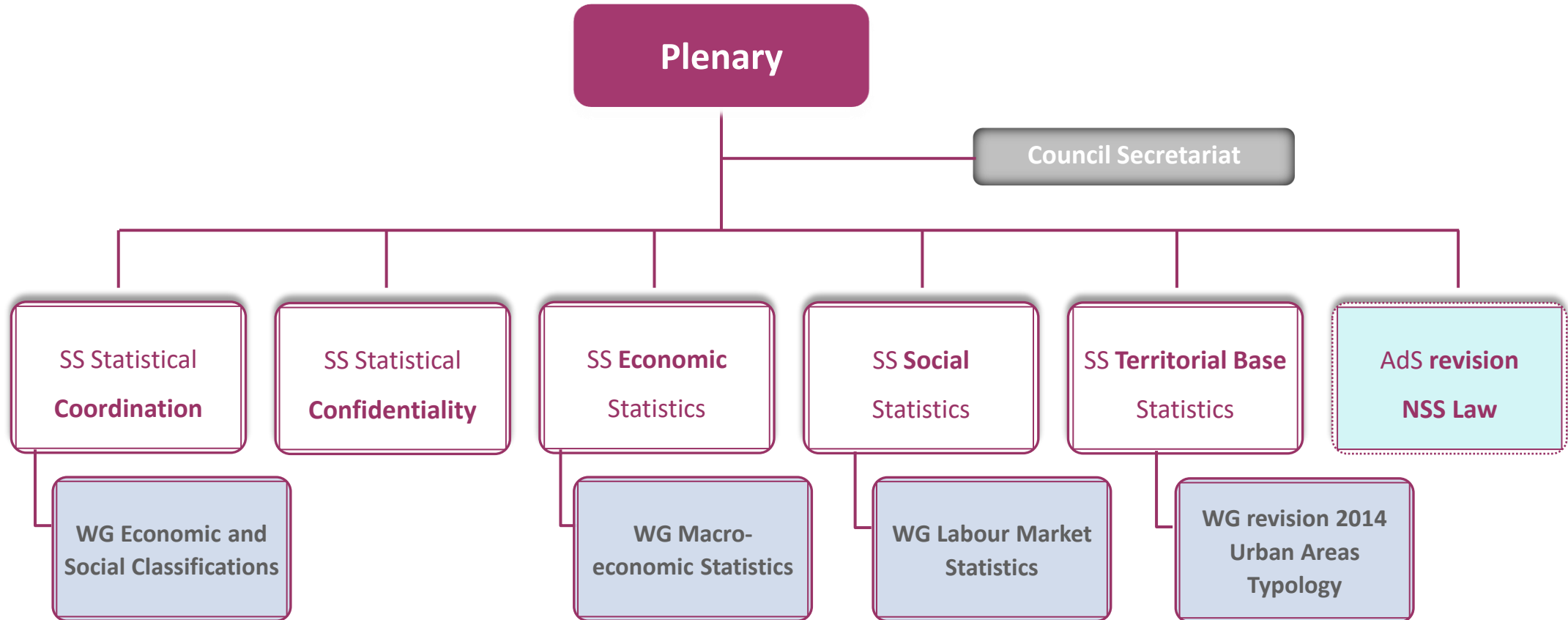
# CSE Structure



# CSE Sections

SECTION	POWERS
<b>STATISTICAL COORDINATION</b>	<ul style="list-style-type: none"> <li>• Evaluates strategic documents: General Guidelines, annual Plans and Reports, etc.</li> <li>• Approves technical tools: classifications, concepts, etc.</li> </ul>
<b>STATISTICAL CONFIDENTIALITY</b>	<ul style="list-style-type: none"> <li>• Supervises matters relating to data protection of statistical information</li> <li>• Decides on requests for the release of confidential statistical data</li> </ul>
<b>ECONOMIC STATISTICS</b>	<ul style="list-style-type: none"> <li>• Issues opinion on economic statistics – National, Regional and Satellite Accounts, Agriculture, Energy, Enterprises, Exchange, Balance of Payments, etc.</li> </ul>
<b>SOCIAL STATISTICS</b>	<ul style="list-style-type: none"> <li>• Issues opinion on social statistics – Population, Education and Training, Justice, Health, Labour Market, etc.</li> </ul>
<b>TERRITORIAL BASE STATISTICS</b>	<ul style="list-style-type: none"> <li>• Monitors the territorial base statistics promoting its enrichment and suitability to needs of users</li> </ul>
<b>REVISION NSS LAW</b>	<ul style="list-style-type: none"> <li>• Preparation of draft law for the revision of the legislation governing the NSS</li> </ul>

# CSE Organisation Chart



# CSE Composition

---

- **Chair:** Minister responsible for INE (Statistics Portugal)
- **Vice-Chair:** President of INE (Statistics Portugal)
- **Members:** Users and Producers of Official Statistics

# CSE Members

## Producers

- Instituto Nacional de Estatística (Statistics Portugal)
- Banco de Portugal
- Regional Statistical Services – Autonomous Regions of the Azores and Madeira
- ONAs (with Protocols of statistical delegated functions)

9

## Users

- Public entities (ministries)
- Data Protection Authority
- Association of Municipalities
- Employers Confederations
- Trade Union representatives
- Consumer Protection Agency
- Universities/researchers
- Personalities (5) of recognised scientific merit and independence

20



# CSE Functioning

Members are appointed by the Prime Minister (3-year term, renewable)

Plenary: 2 regular sessions per year

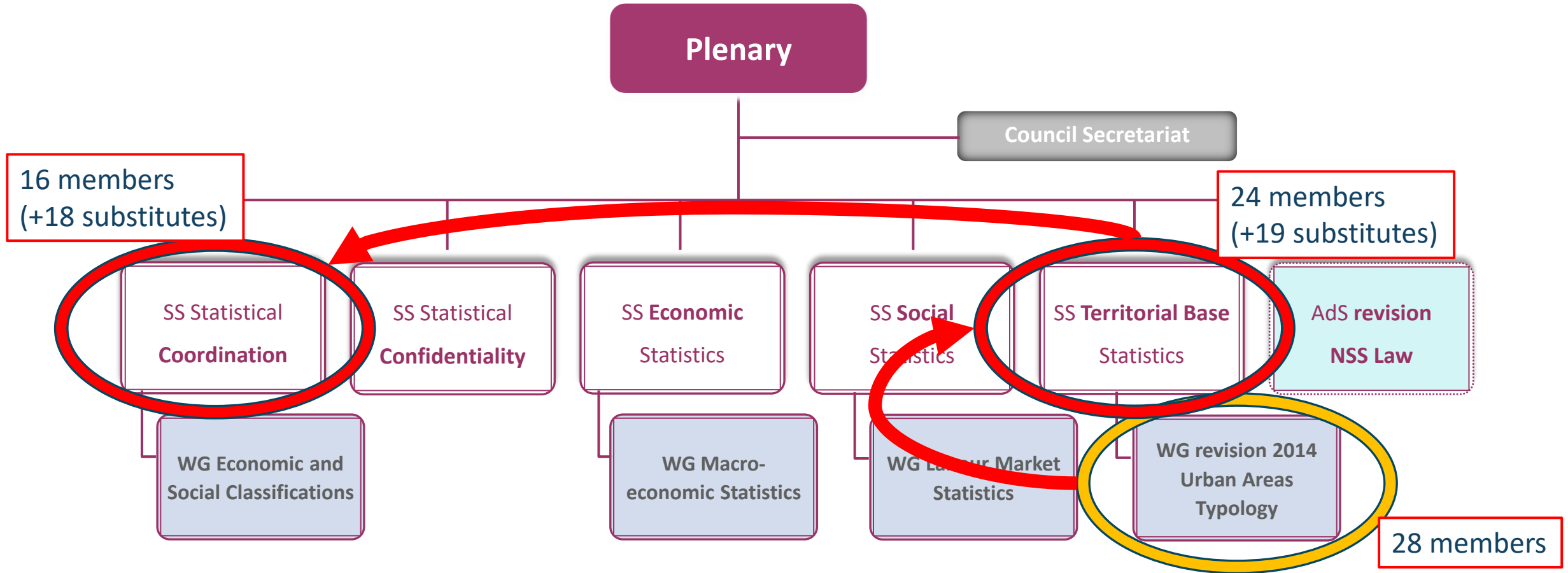
Sections: 2-4 sessions per year

Decisions issued by the Sections can be re-evaluated by the Plenary, if requested

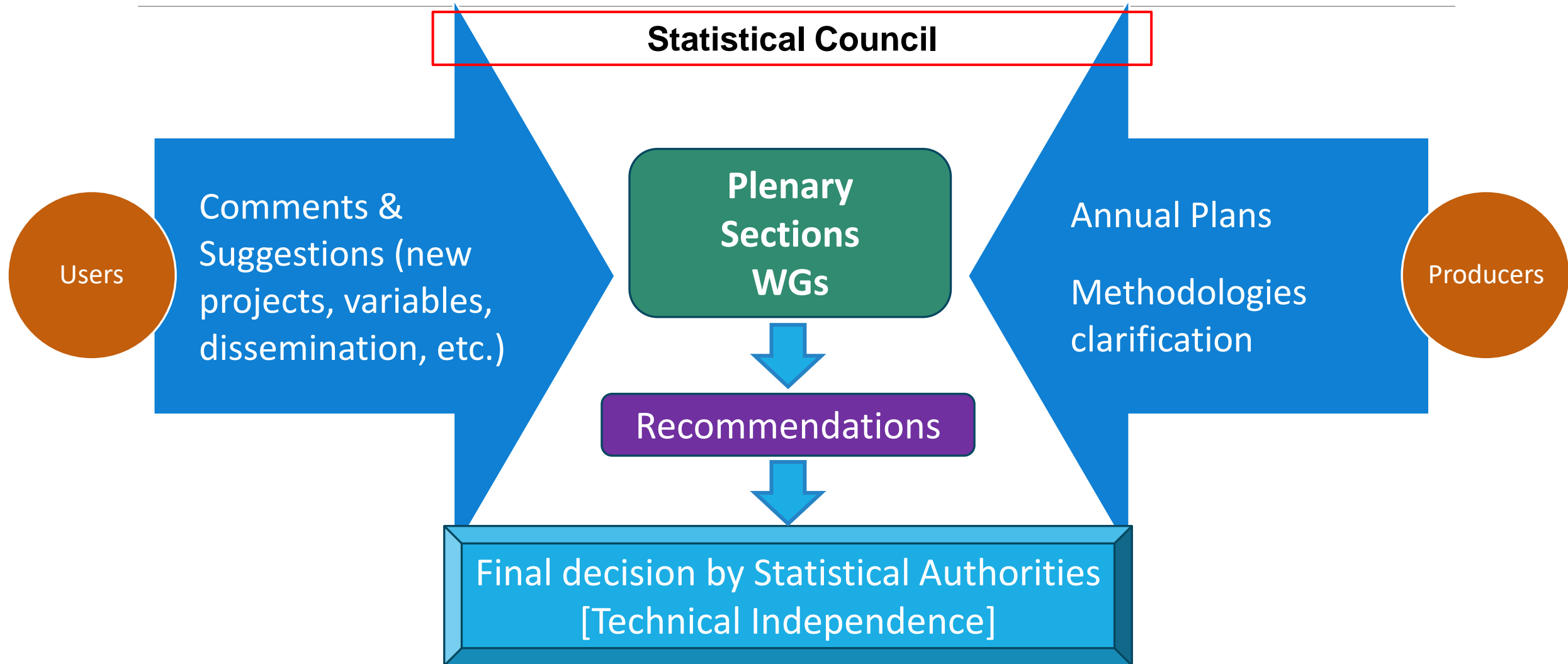
Working Groups (include technical experts): several sessions (including subgroups)

210 persons: 50 members (regular & substitutes) + 75 WG members + 85 other participants

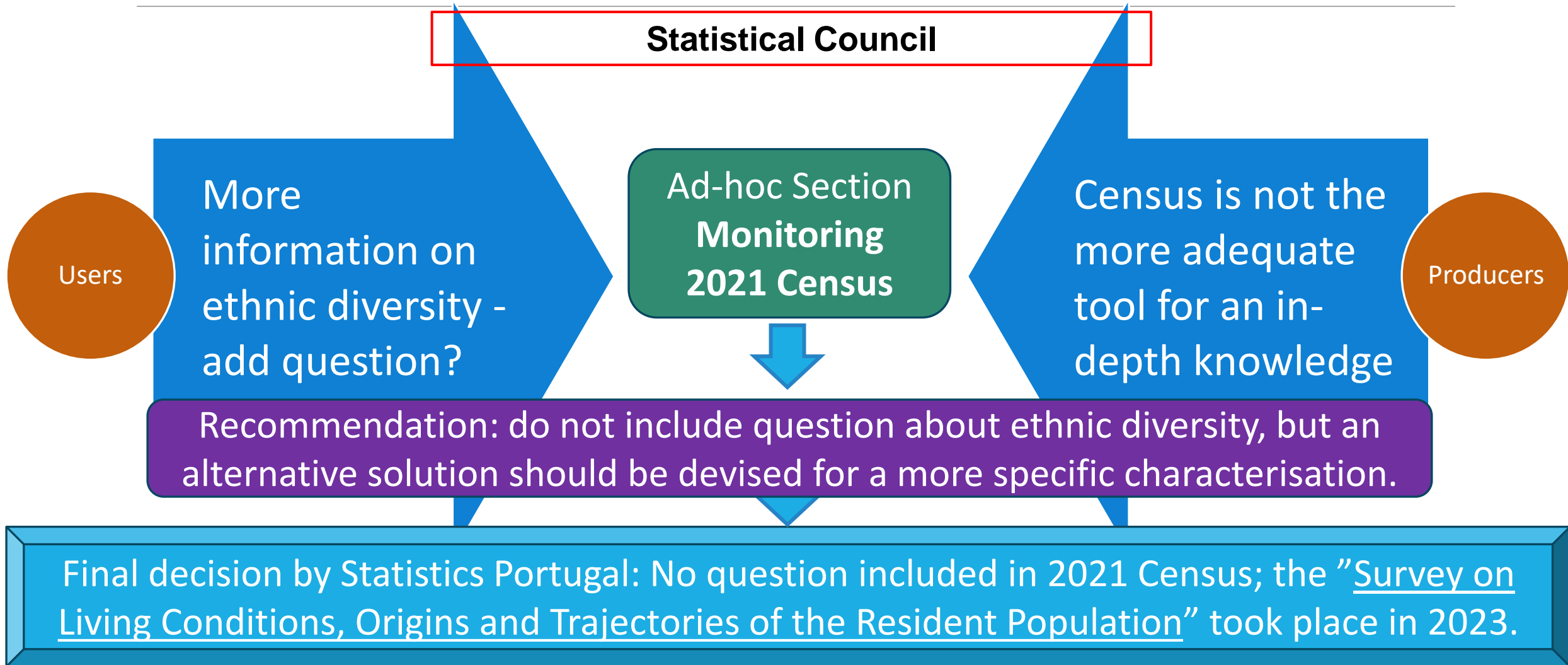
# CSE Functioning: WG revision 2014 Urban Areas Typology example



# Relationship between users and producers



# Relationship between users and producers: 2021 Census example



**Thank you  
for your attention!**