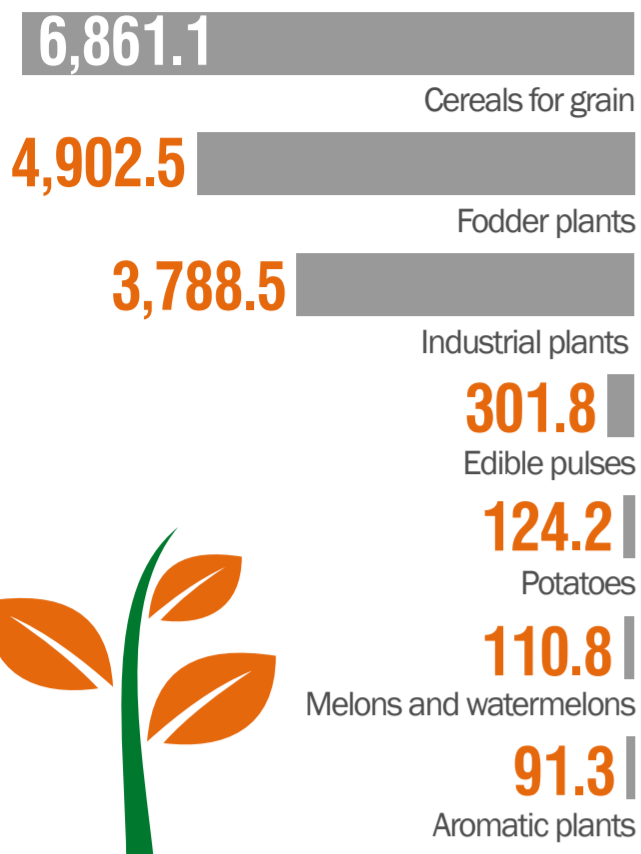


ANNUAL AGRICULTURAL SURVEY, 2021

CULTIVATED AREA

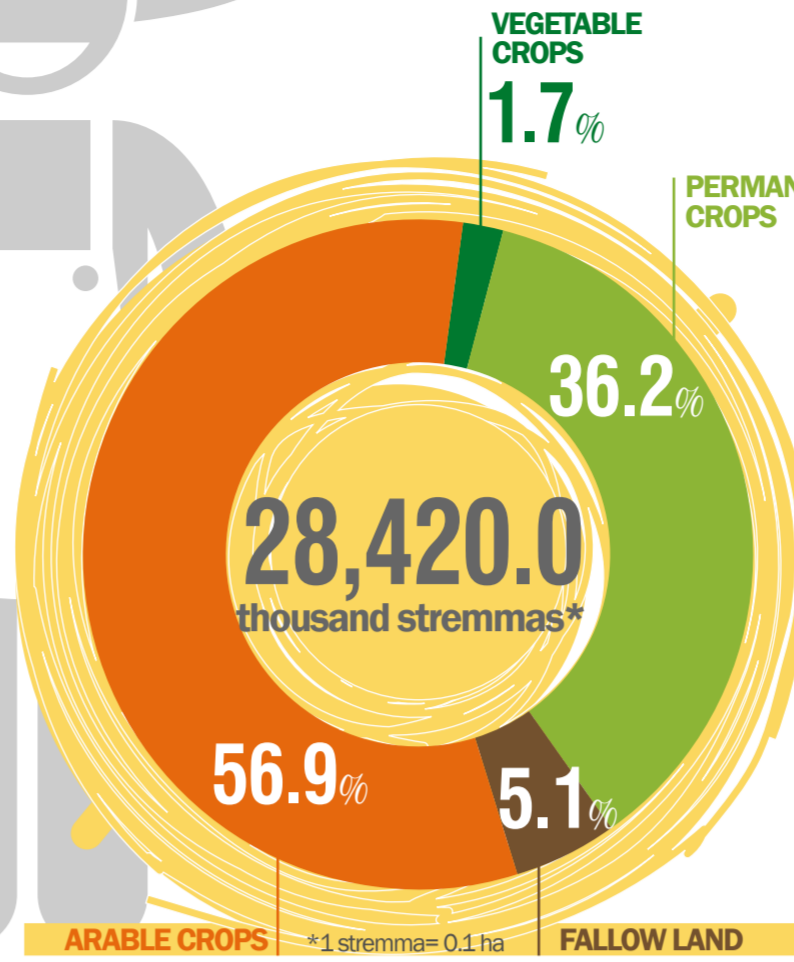
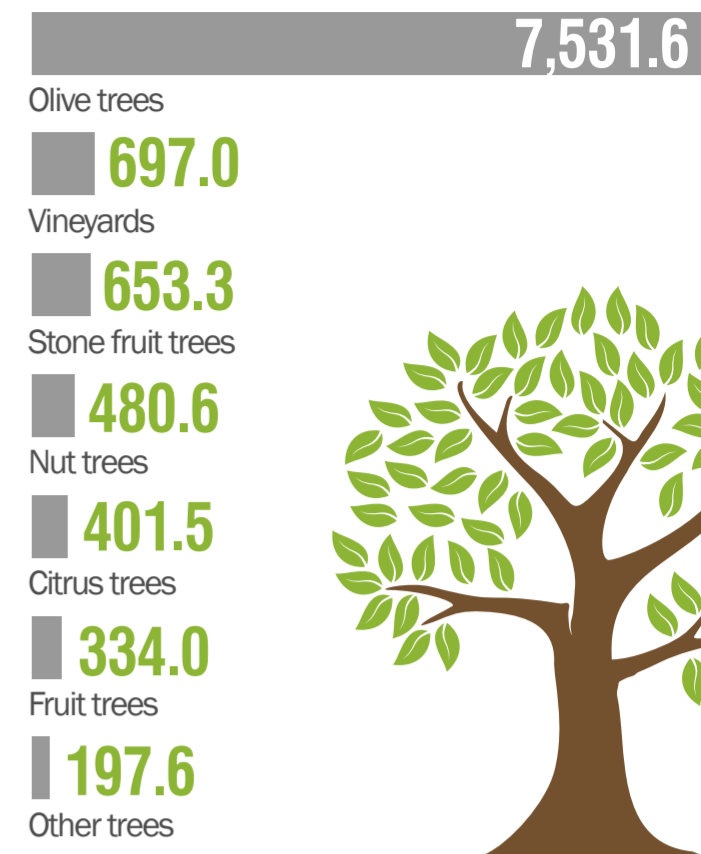
ARABLE LAND

thousand stremmas*



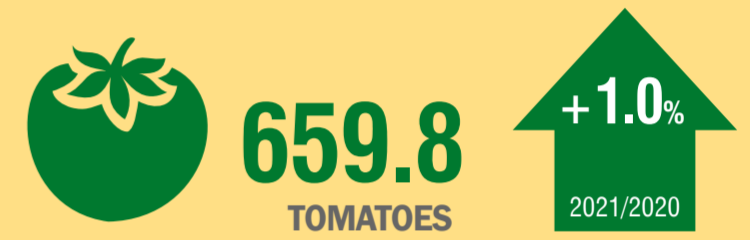
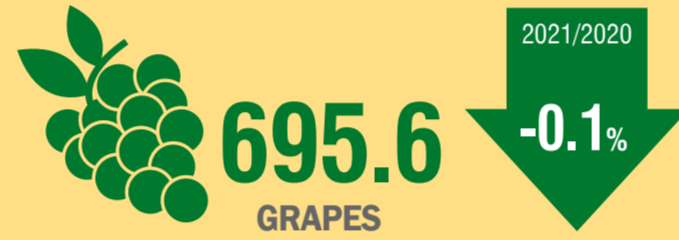
PERMANENT CROPS

thousand stremmas*



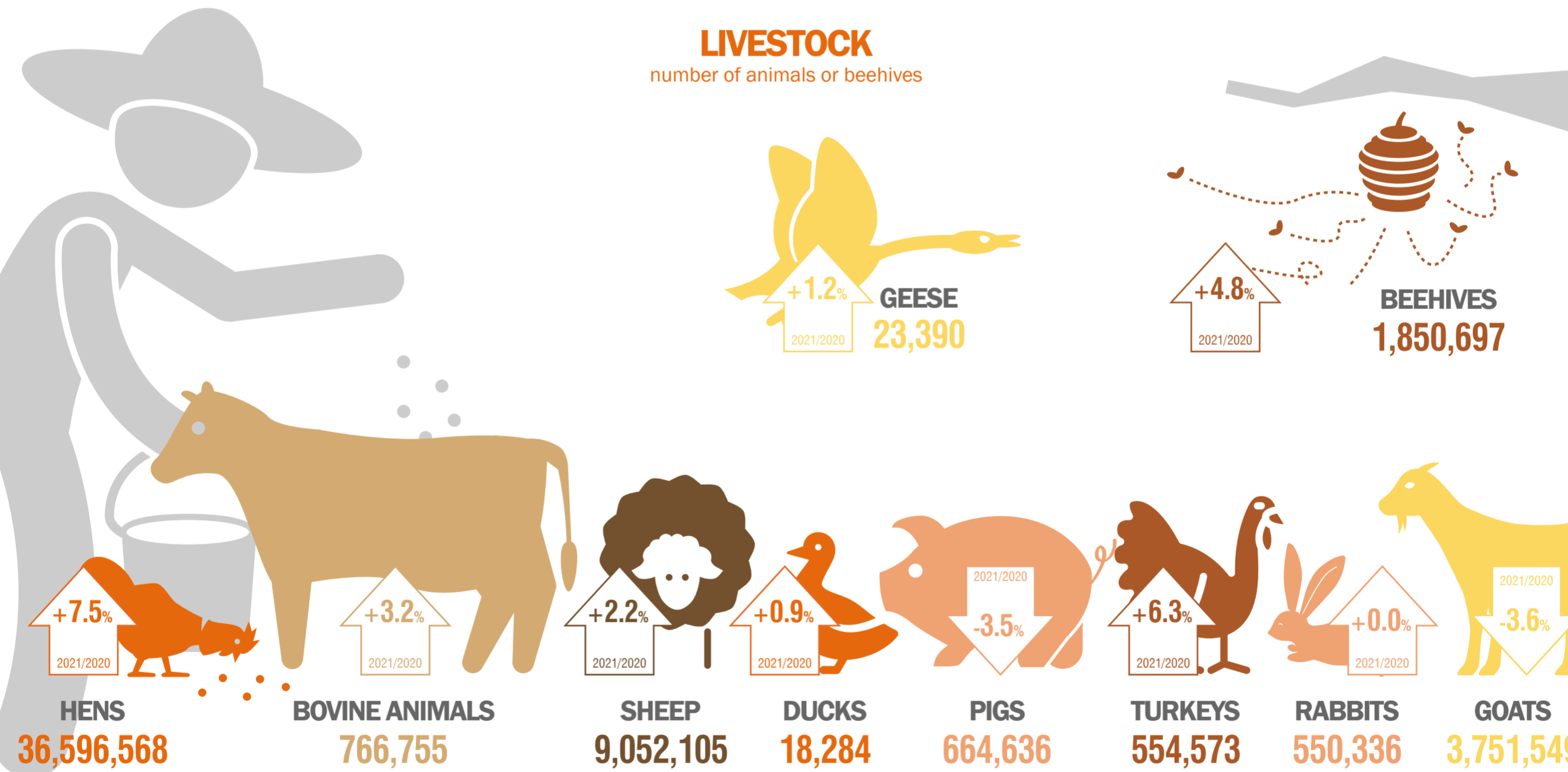
PRODUCTION OF BASIC AGRICULTURAL PRODUCTS

thousand tonnes



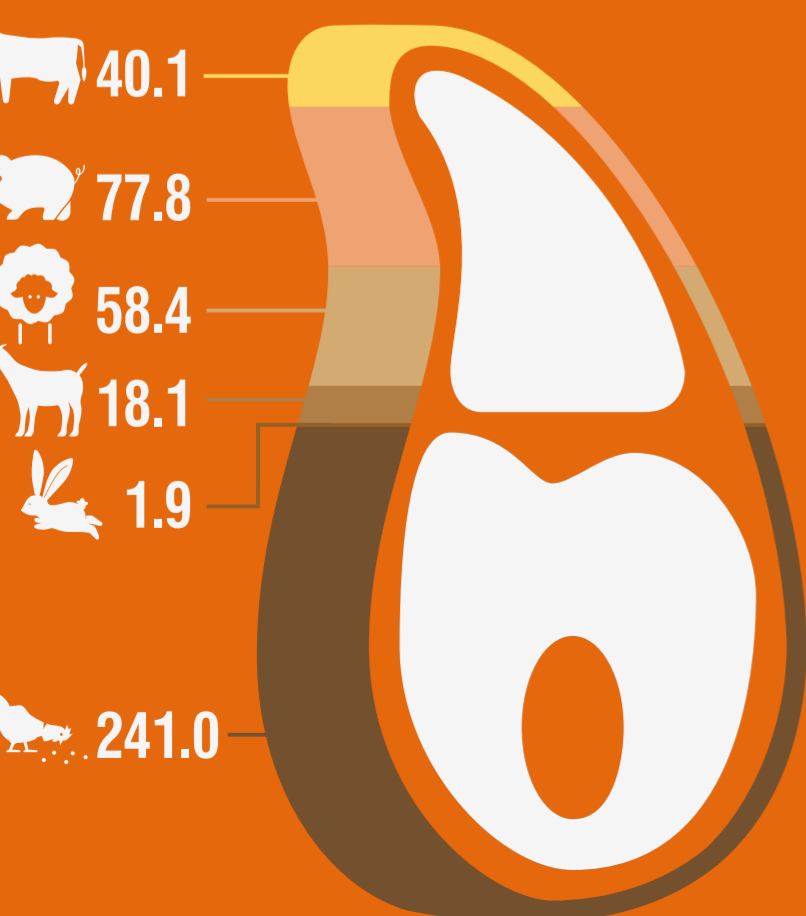
LIVESTOCK

number of animals or beehives



MEAT PRODUCTION

thousand tonnes



LIVESTOCK PRODUCTS

thousand tonnes



MILK PRODUCTION

thousand tonnes

