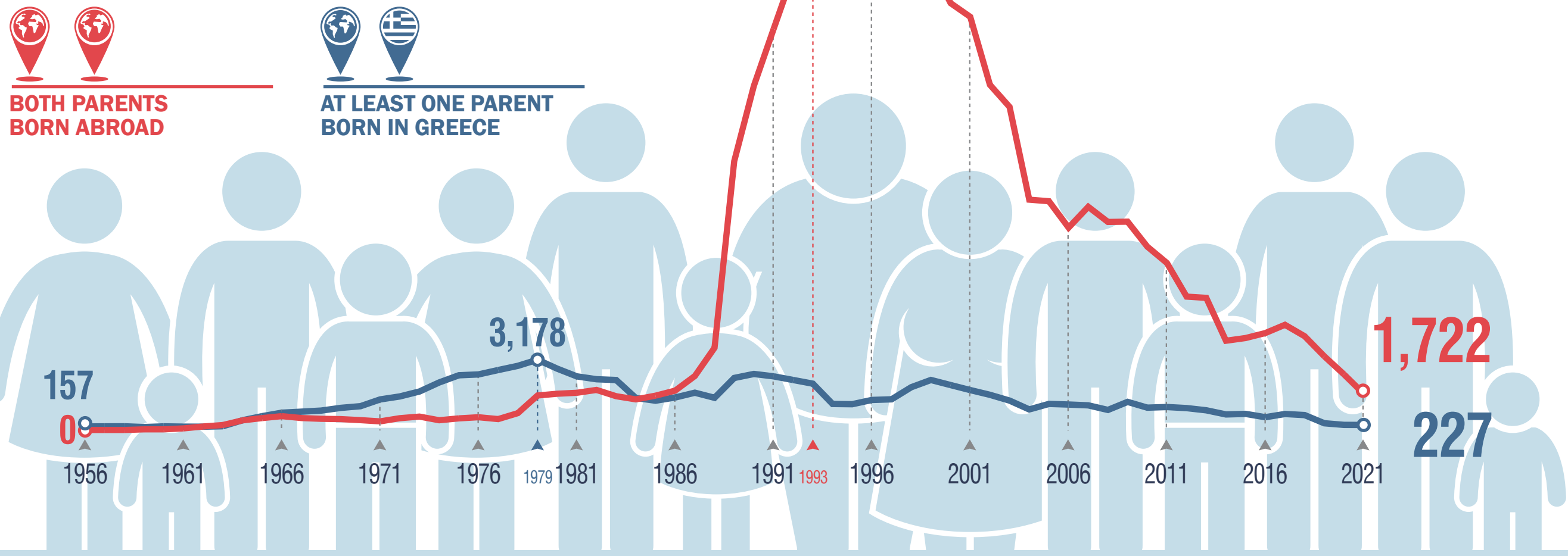


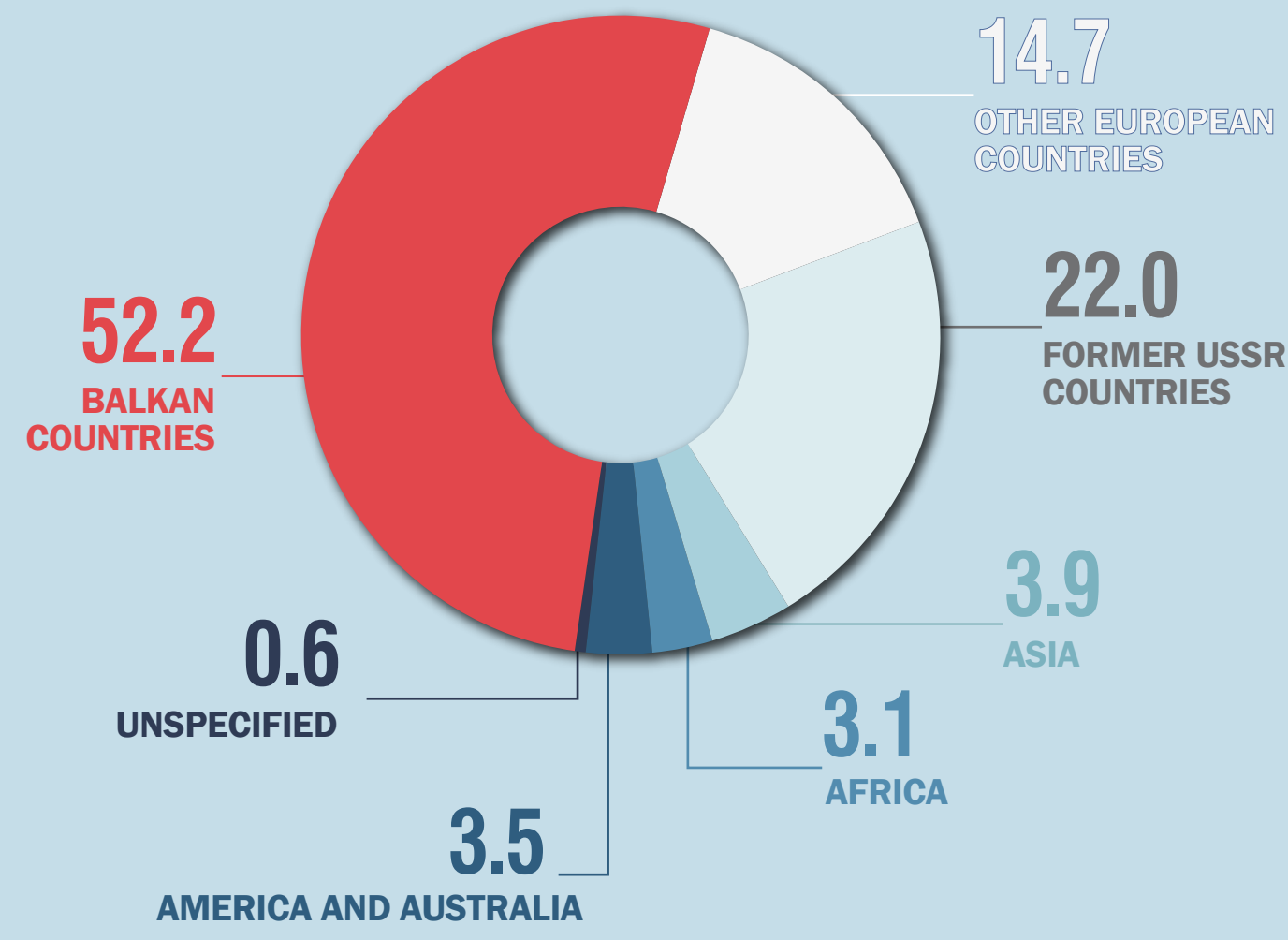
LABOUR MARKET SITUATION OF MIGRANTS AND THEIR IMMEDIATE DESCENDANTS, 2021

EVOLUTION OF MIGRANT FLOWS

(Includes only persons still living in Greece in 2021.)



MIGRANTS' GEOGRAPHICAL ORIGIN (%)



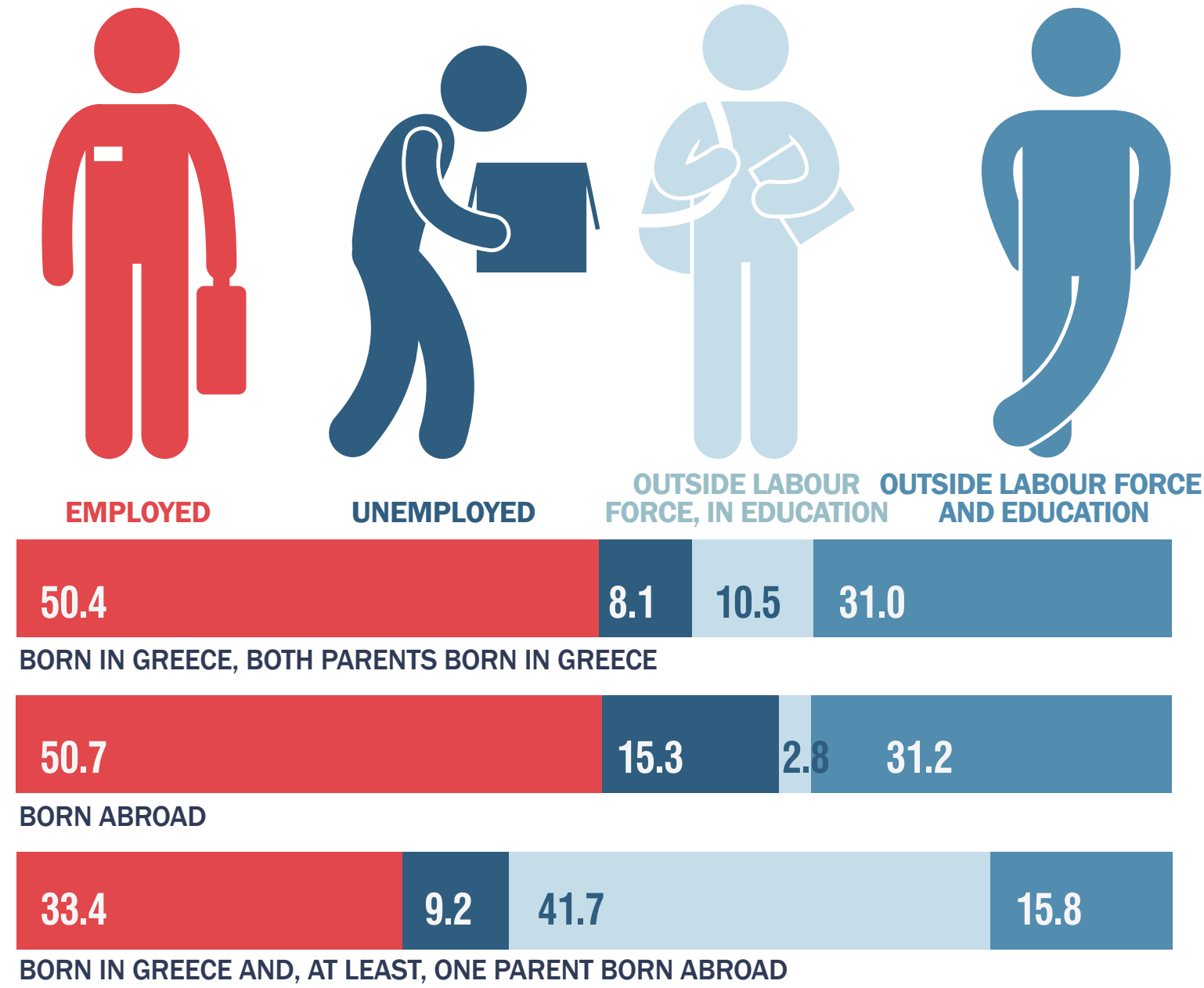
PERSONS 15 - 74 YEARS OLD

7,862,245

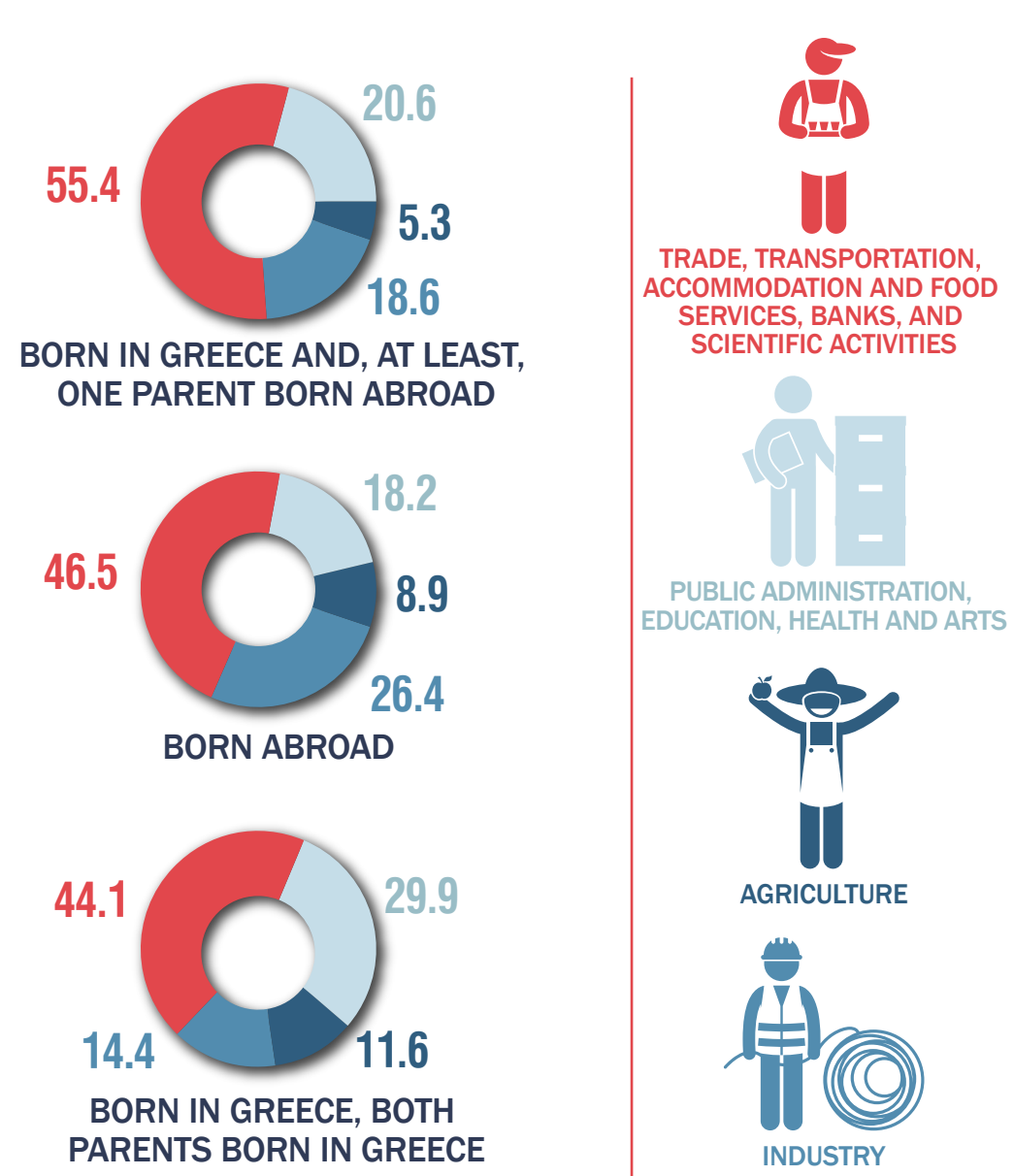
MIGRANT BACKGROUND



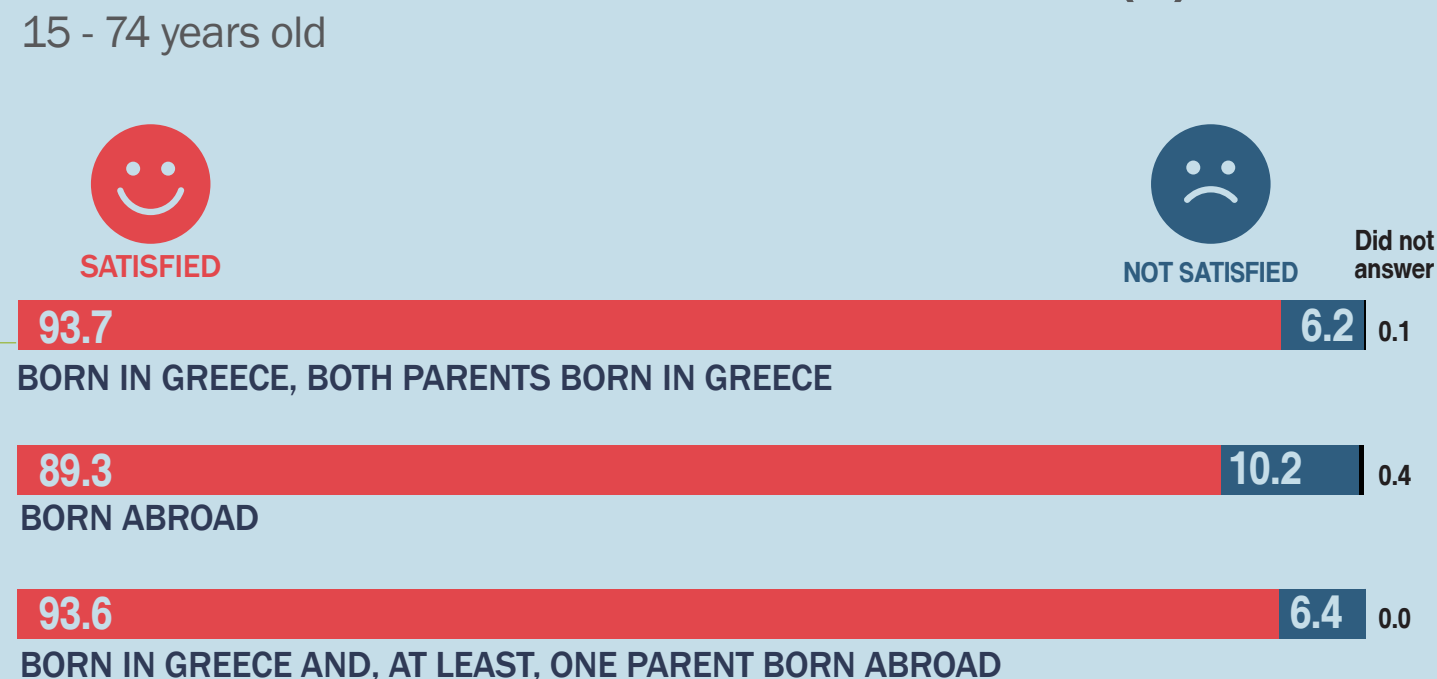
PERSONS BY MIGRANT BACKGROUND AND EMPLOYMENT STATUS (%) 15 - 74 years old



EMPLOYED PERSONS BY MIGRANT BACKGROUND AND SECTOR OF ECONOMIC ACTIVITY (%) 15 - 74 years old



EMPLOYED BY MIGRANT BACKGROUND AND DEGREE OF SATISFACTION FROM THEIR JOB (%) 15 - 74 years old



EMPLOYED BY MIGRANT BACKGROUND AND DISCRIMINATIONS IN THE WORKPLACE (%) 15 - 74 years old

