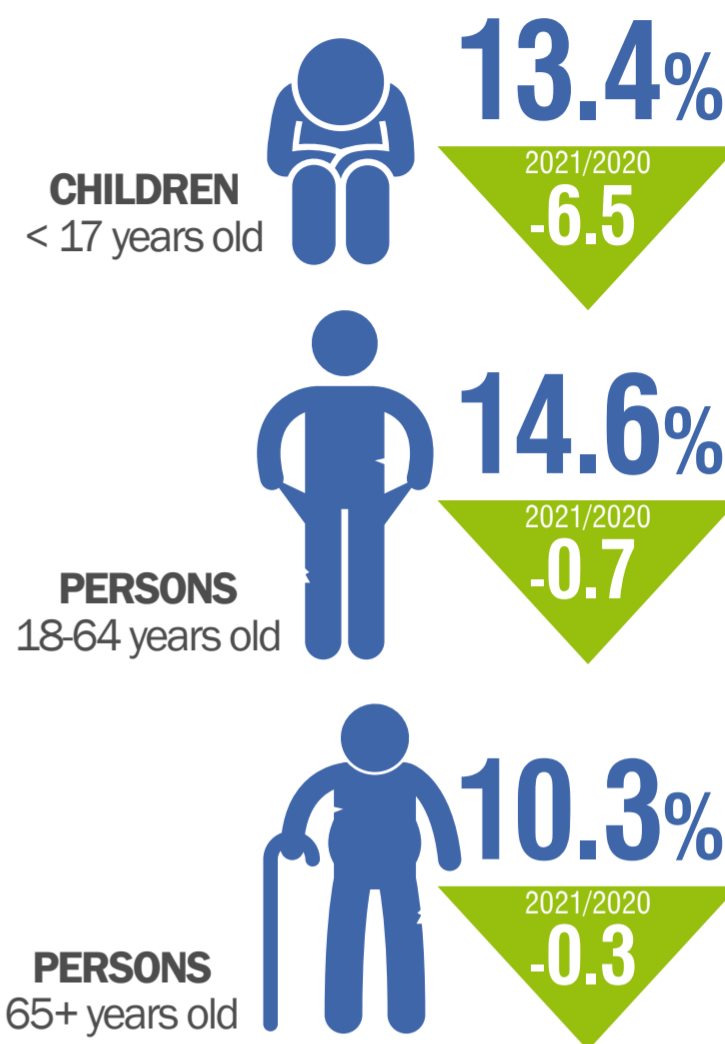
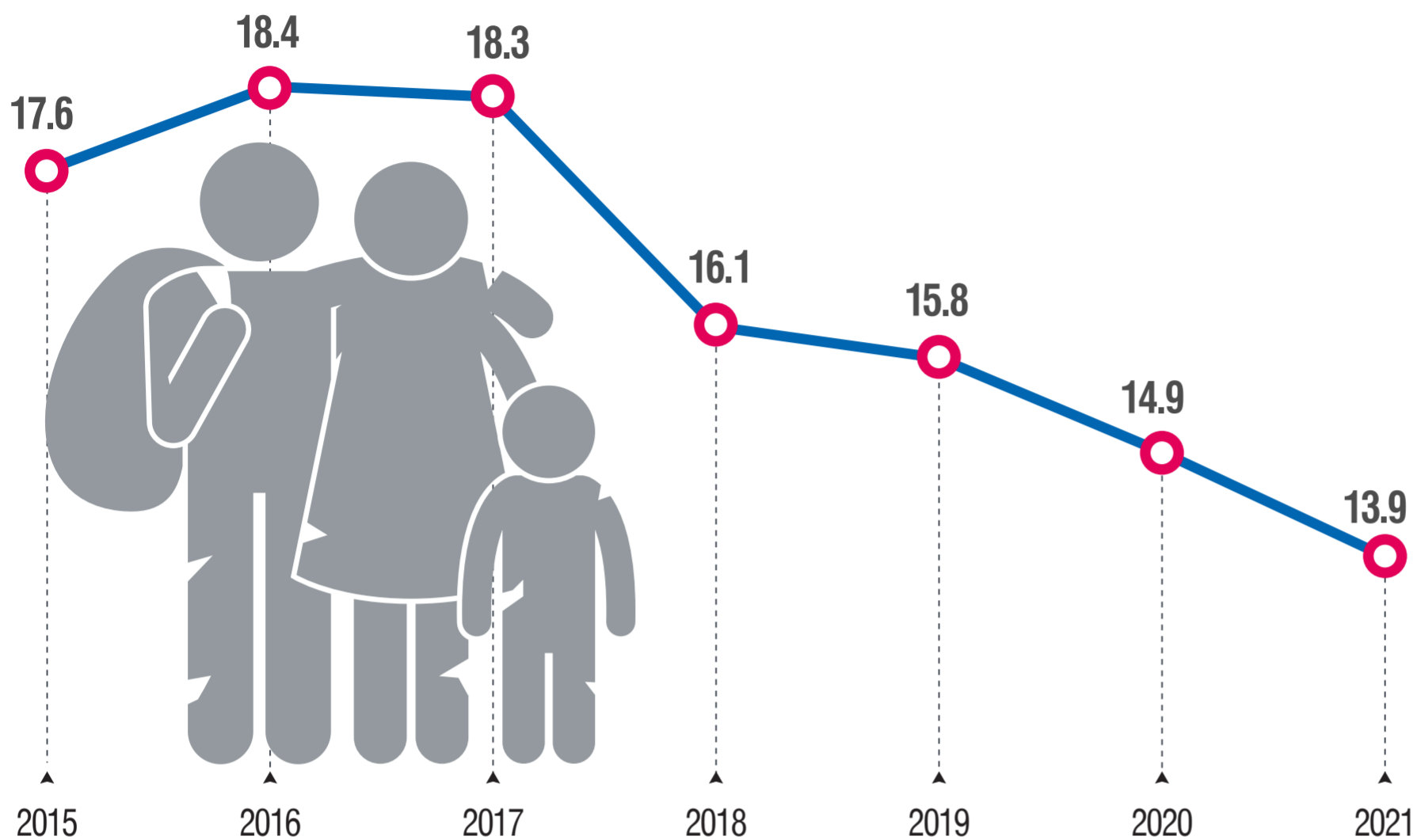


MATERIAL AND SOCIAL DEPRIVATION, 2021

POPULATION IN MATERIAL AND SOCIAL DEPRIVATION



INABILITY TO FULFILL BASIC NEEDS (%)

● TOTAL ● NON-POOR HOUSEHOLDS ● POOR HOUSEHOLDS

1 WEEK HOLIDAY



PAY UNEXPECTED FINANCIAL EXPENSES



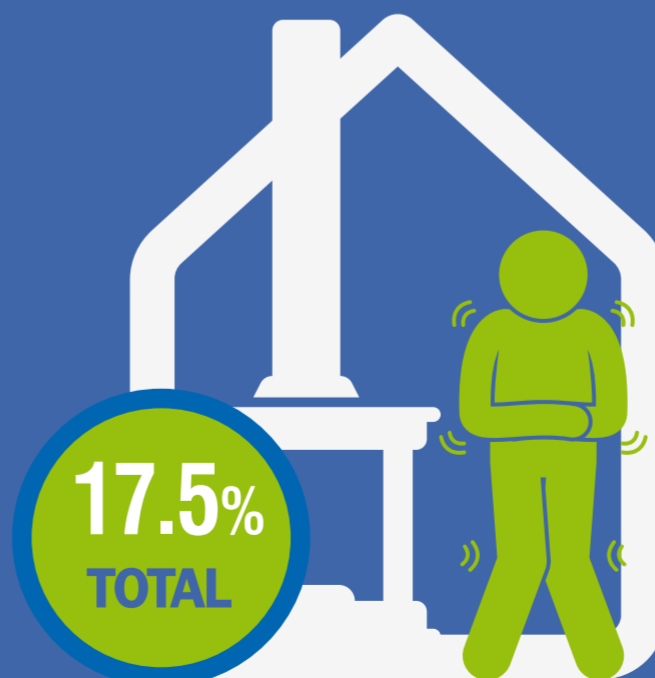
HOME ADEQUATELY WARM



NUTRITION (meat, fish, chicken every 2nd day)



INABILITY TO KEEP HOME ADEQUATELY WARM



LIVE IN OVERCROWDED HOUSEHOLDS

