



**HELLENIC REPUBLIC**  
**HELLENIC STATISTICAL AUTHORITY**

Piraeus, 31 January 2020

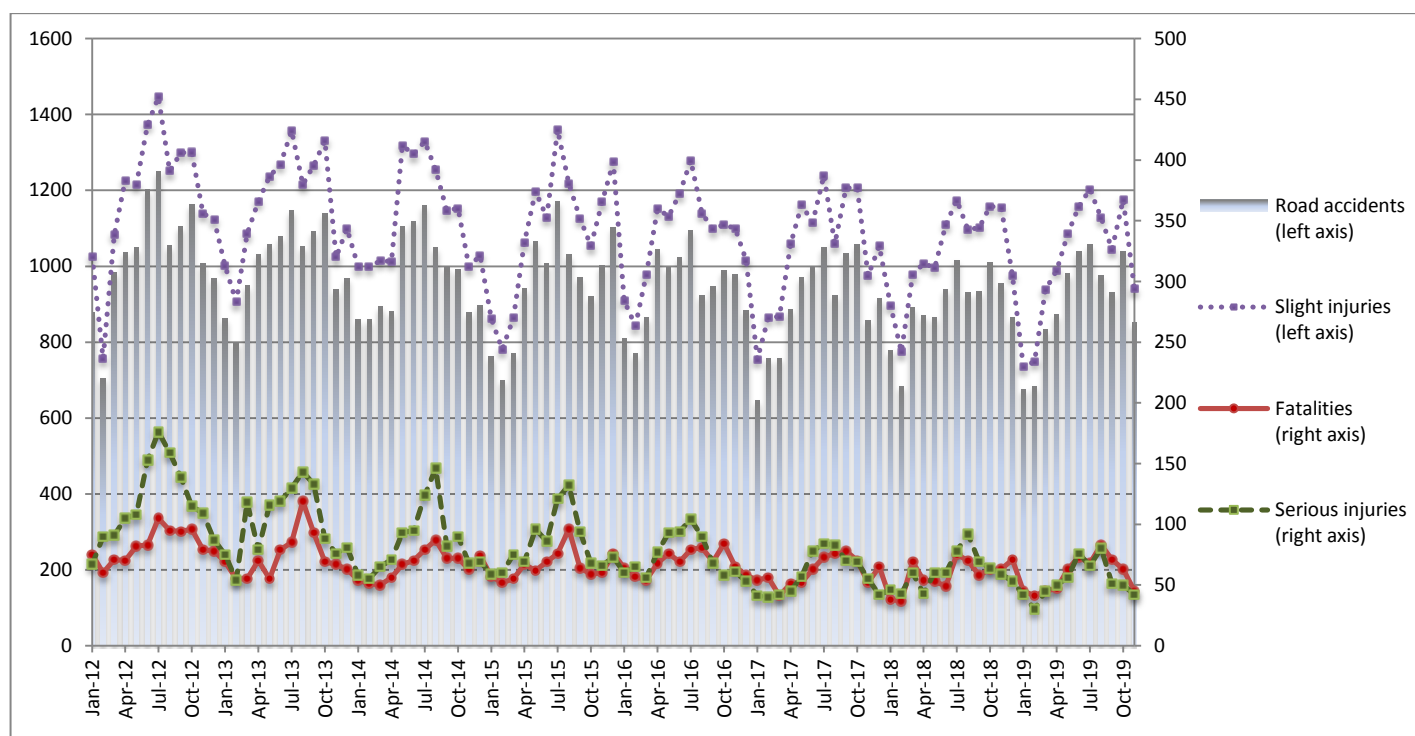
**PRESS RELEASE**

**ROAD TRAFFIC ACCIDENTS: November 2019**

The Hellenic Statistical Authority (ELSTAT) announces provisional<sup>1</sup> data on Road Traffic Accidents for November 2019. In particular, the road traffic accidents which occurred in Greece, resulting in death or injury, decreased by 10.9% in comparison with the corresponding month of 2018 (851 road accidents in November 2019, against 955 road accidents in November 2018).

The casualties of the injury-causing accidents that occurred in November 2019 were as follows: 45 deaths, 42 serious injuries and 940 slight injuries. In contrast, in November 2018 the corresponding figures were: 63 deaths, 59 serious injuries and 1,155 slight injuries. Therefore, road accident casualties in November 2019 decreased by 28.6% for deaths, by 28.8% for serious injuries and by 18.6% for slight injuries.

**Graph 1: Road traffic accidents and casualties,  
January 2012 - November 2019**



*Provisional data for the period January 2019 - November 2019*

**Information on methodological issues:**

Sectoral Statistics Division  
Transport Statistics Section  
P. Tzortzi  
Tel: +30 213 135 2187  
Fax : +30 213 135 2757  
e-mail: [p.tzortzi@statistics.gr](mailto:p.tzortzi@statistics.gr)

**Information for data provision:**

Tel: 213 135 2022, 2308, 2310  
e-mail: [data.dissem@statistics.gr](mailto:data.dissem@statistics.gr)

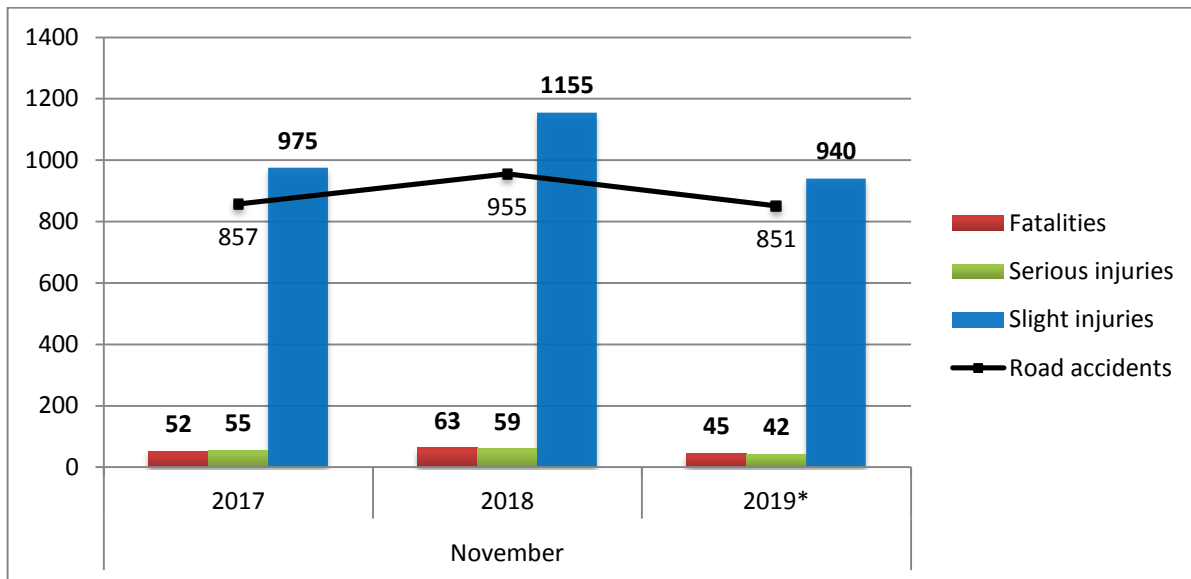
<sup>1</sup> Data for the reference year are provisional until the finalisation of the annual data, which become final 10 months after the end of the reference year. During these 10 months the provisional data are updated on the basis of the data of the Road Accident Forms which are transmitted to ELSTAT by Police Authorities.

**Table 1: Road traffic accidents and casualties, November 2017 - 2019\***

	November				
	2017	2018	2018/2017 (%)	2019*	2019*/2018 (%)
<b>Road accidents</b>	<b>857</b>	<b>955</b>	<b>11.4</b>	<b>851</b>	<b>-10.9</b>
<b>Fatalities</b>	<b>52</b>	<b>63</b>	<b>21.2</b>	<b>45</b>	<b>-28.6</b>
<b>Total injuries</b>	<b>1,030</b>	<b>1,214</b>	<b>17.9</b>	<b>982</b>	<b>-19.1</b>
Serious injuries	55	59	7.3	42	-28.8
Slight injuries	975	1,155	18.5	940	-18.6

\* Provisional data

**Graph 2: Road traffic accidents and casualties, November 2017 - 2019\***



\* Provisional data

**Table 2: Road traffic accidents and casualties, by region and department, November 2018 and 2019\***

Region and department	Road accidents			Fatalities			Serious injuries			Slight injuries		
	2018	2019*	%	2018	2019*	%	2018	2019*	%	2018	2019*	%
<b>Greece Total</b>	<b>955</b>	<b>851</b>	<b>-10.9</b>	<b>63</b>	<b>45</b>	<b>-28.6</b>	<b>59</b>	<b>42</b>	<b>-28.8</b>	<b>1,155</b>	<b>940</b>	<b>-18.6</b>
<b>Anatoliki Makedonia and Thraki (East Macedonia and Thrace)</b>	<b>24</b>	<b>42</b>	<b>75.0</b>	<b>4</b>	<b>6</b>	<b>50.0</b>	<b>6</b>	<b>1</b>	<b>-83.3</b>	<b>36</b>	<b>48</b>	<b>33.3</b>
Drama	2	5	150.0	0	0		0	0		6	5	
Evros	5	8	60.0	1	1		2	0		4	8	
Kavala	11	15	36.4	1	2		3	0		17	19	
Xanthi	3	3	0.0	2	2		1	0		5	5	
Rodopi	3	11	266.7	0	1		0	1		4	11	
<b>Kentriki Makedonia (Central Macedonia)</b>	<b>173</b>	<b>129</b>	<b>-25.4</b>	<b>10</b>	<b>5</b>	<b>-50.0</b>	<b>9</b>	<b>4</b>	<b>-55.6</b>	<b>251</b>	<b>161</b>	<b>-35.9</b>
Imathia	3	3	0.0	0	0		1	1		3	2	
Thessaloniki	143	109	-23.8	6	4		4	3		206	139	
Kilkis	6	4	-33.3	1	0		1	0		16	5	
Pella	5	8	60.0	0	1		1	0		9	9	
Pieria	3	1	-66.7	1	0		0	0		2	1	
Serres	7	1	-85.7	1	0		0	0		11	2	
Chalkidiki	6	3	-50.0	1	0		2	0		4	3	
<b>Dytiki Makedonia (West Macedonia)</b>	<b>5</b>	<b>5</b>	<b>0.0</b>	<b>1</b>	<b>0</b>	<b>-100.0</b>	<b>1</b>	<b>0</b>	<b>-100.0</b>	<b>8</b>	<b>6</b>	<b>-25.0</b>
Grevena	1	2	100.0	0	0		0	0		4	3	
Kastoria	1	1	0.0	0	0		1	0		0	1	
Kozani	2	2	0.0	0	0		0	0		4	2	
Florina	1	0	-100.0	1	0		0	0		0	0	
<b>Ipeiros (Epirus)</b>	<b>7</b>	<b>4</b>	<b>-42.9</b>	<b>1</b>	<b>0</b>	<b>-100.0</b>	<b>1</b>	<b>0</b>	<b>-100.0</b>	<b>9</b>	<b>5</b>	<b>-44.4</b>
Arta	0	0	-	0	0		0	0		0	0	
Thesprotia	3	1	-66.7	1	0		0	0		5	2	
Ioannina	2	3	50.0	0	0		1	0		2	3	
Preveza	2	0	-100.0	0	0		0	0		2	0	
<b>Thessalia (Thessaly)</b>	<b>13</b>	<b>9</b>	<b>-30.8</b>	<b>1</b>	<b>1</b>	<b>0.0</b>	<b>2</b>	<b>3</b>	<b>50.0</b>	<b>19</b>	<b>8</b>	<b>-57.9</b>
Karditsa	3	1	-66.7	0	0		0	0		4	1	
Larissa	5	3	-40.0	0	0		1	0		11	6	
Magnissia	5	3	-40.0	1	1		1	2		4	0	
Trikala	0	2	-	0	0		0	1		0	1	
<b>Ionian Nisia (Ionian Islands)</b>	<b>6</b>	<b>5</b>	<b>-16.7</b>	<b>1</b>	<b>0</b>	<b>-100.0</b>	<b>0</b>	<b>1</b>	<b>-</b>	<b>7</b>	<b>6</b>	<b>-14.3</b>
Zakynthos	2	2	0.0	1	0		0	0		1	2	
Kerkyra	3	1	-66.7	0	0		0	1		5	2	
Kefallinia	0	1	-	0	0		0	0		0	1	
Lefkada	1	1	0.0	0	0		0	0		1	1	

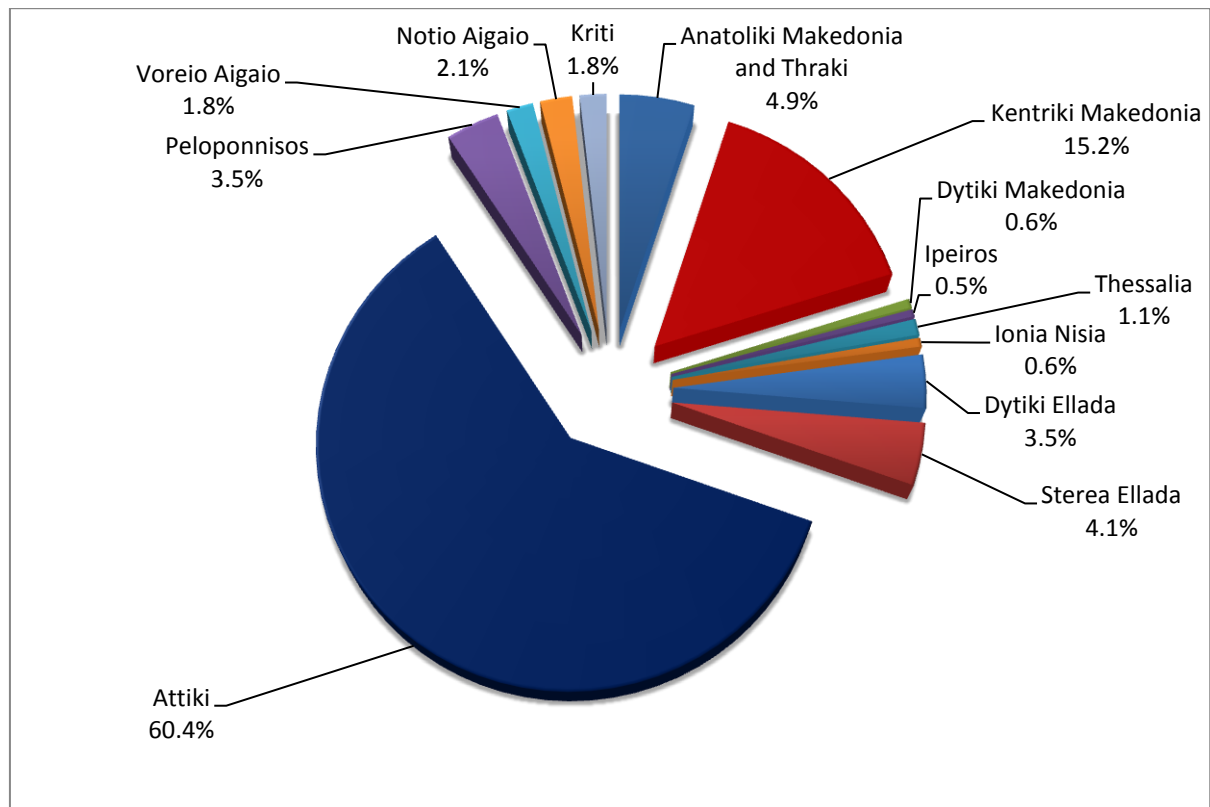
\* Provisional data

**Table 2: Road traffic accidents and casualties, by region and department, November 2018 and 2019\* (Continued)**

Region and department	Road accidents			Fatalities			Serious injuries			Slight injuries		
	2018	2019*	%	2018	2019*	%	2018	2019*	%	2018	2019*	%
<b>Dytiki Ellada (West Greece)</b>	<b>50</b>	<b>30</b>	<b>-40.0</b>	<b>5</b>	<b>2</b>	<b>-60.0</b>	<b>6</b>	<b>4</b>	<b>-33.3</b>	<b>57</b>	<b>29</b>	<b>-49.1</b>
Etolia & Akarnania	18	9	-50.0	1	1		1	1		23	8	
Achaia	22	15	-31.8	1	1		3	1		26	15	
Ilia	10	6	-40.0	3	0		2	2		8	6	
<b>Stereia Ellada</b>	<b>38</b>	<b>35</b>	<b>-7.9</b>	<b>4</b>	<b>7</b>	<b>75.0</b>	<b>3</b>	<b>5</b>	<b>66.7</b>	<b>44</b>	<b>34</b>	<b>-22.7</b>
Viotia	8	5	-37.5	0	2		0	0		12	5	
Evia	14	21	50.0	1	4		3	1		12	21	
Evrytania	0	0	-	0	0		0	0		0	0	
Fthiotida	15	7	-53.3	3	1		0	4		19	6	
Fokida	1	2	100.0	0	0		0	0		1	2	
<b>Attiki (Attica)</b>	<b>553</b>	<b>514</b>	<b>-7.1</b>	<b>19</b>	<b>14</b>	<b>-26.3</b>	<b>16</b>	<b>18</b>	<b>12.5</b>	<b>650</b>	<b>569</b>	<b>-12.5</b>
<b>Peloponnisos (Peloponnese)</b>	<b>41</b>	<b>30</b>	<b>-26.8</b>	<b>8</b>	<b>4</b>	<b>-50.0</b>	<b>7</b>	<b>2</b>	<b>-71.4</b>	<b>40</b>	<b>30</b>	<b>-25.0</b>
Argolida	5	7	40.0	0	2		3	0		2	6	
Arkadia	3	6	100.0	0	1		0	0		4	6	
Korinthia	17	14	-17.6	2	1		3	2		19	15	
Lakonia	9	1	-88.9	2	0		1	0		9	1	
Messinia	7	2	-71.4	4	0		0	0		6	2	
<b>Voreio Aigaio (North Aegean)</b>	<b>14</b>	<b>15</b>	<b>7.1</b>	<b>0</b>	<b>1</b>	<b>-</b>	<b>3</b>	<b>2</b>	<b>-33.3</b>	<b>12</b>	<b>15</b>	<b>25.0</b>
Lesvos	9	8	-11.1	0	0		2	1		8	9	
Samos	2	5	150.0	0	0		0	0		2	5	
Chios	3	2	-33.3	0	1		1	1		2	1	
<b>Notio Aigaio (South Aegean)</b>	<b>17</b>	<b>18</b>	<b>5.9</b>	<b>3</b>	<b>1</b>	<b>-66.7</b>	<b>3</b>	<b>2</b>	<b>-33.3</b>	<b>16</b>	<b>18</b>	<b>12.5</b>
Dodekanissos	10	12	20.0	1	0		2	1		11	13	
Kyklades	7	6	-14.3	2	1		1	1		5	5	
<b>Kriti (Crete)</b>	<b>14</b>	<b>15</b>	<b>7.1</b>	<b>6</b>	<b>4</b>	<b>-33.3</b>	<b>2</b>	<b>0</b>	<b>-100.0</b>	<b>6</b>	<b>11</b>	<b>83.3</b>
Iraklio	12	10	-16.7	5	1		2	0		5	9	
Lassithi	0	2	-	0	0		0	0		0	2	
Rethymno	0	0	-	0	0		0	0		0	0	
Chania	2	3	50.0	1	3		0	0		1	0	

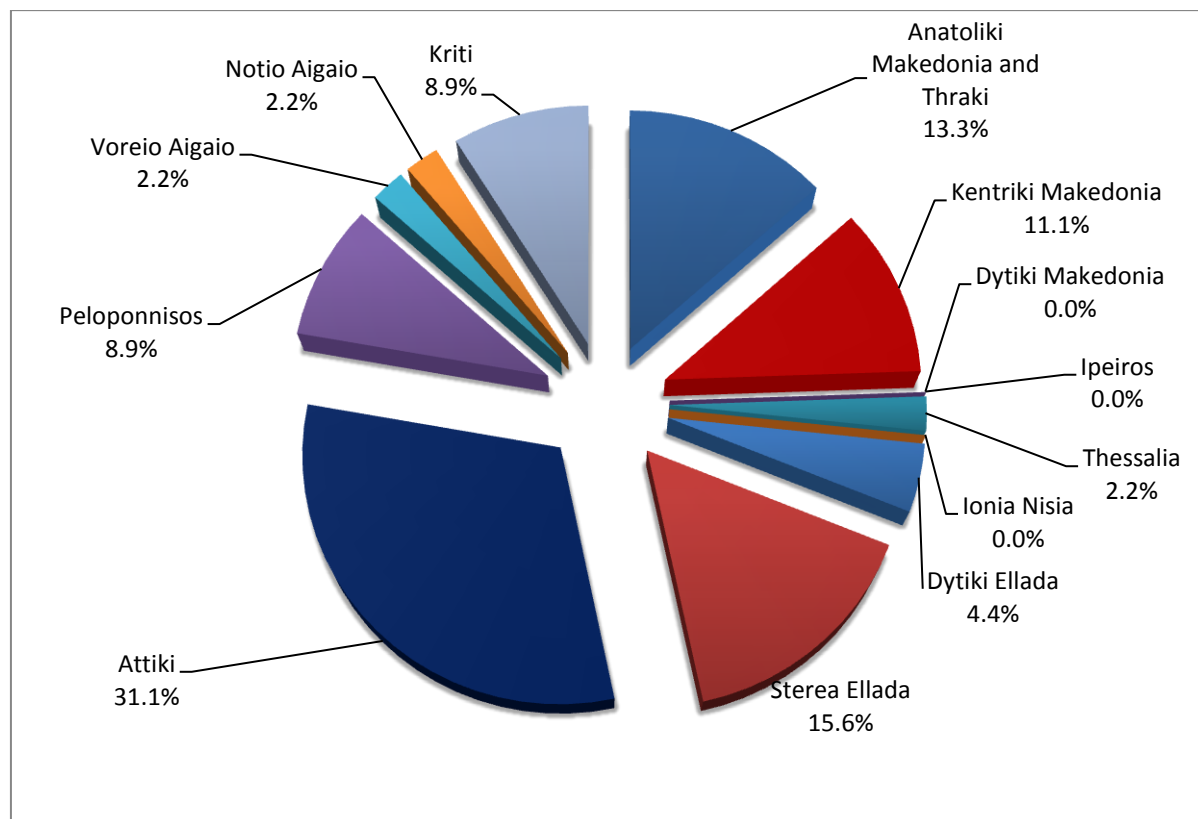
\* Provisional data

**Graph 3: Road traffic accidents by region,  
November 2019 \***



\* Provisional data

**Graph 4: Fatalities by region,  
November 2019 \***



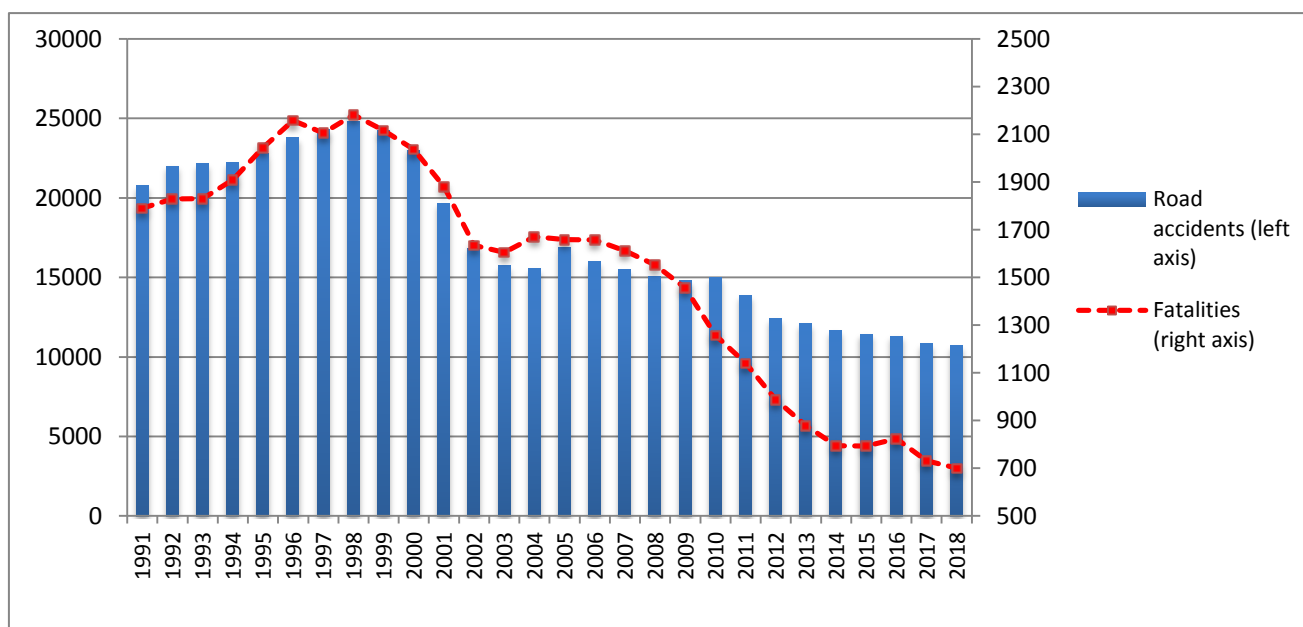
\* Provisional data

**Table 3: Road traffic accidents and casualties, January - November 2017 - 2019\***

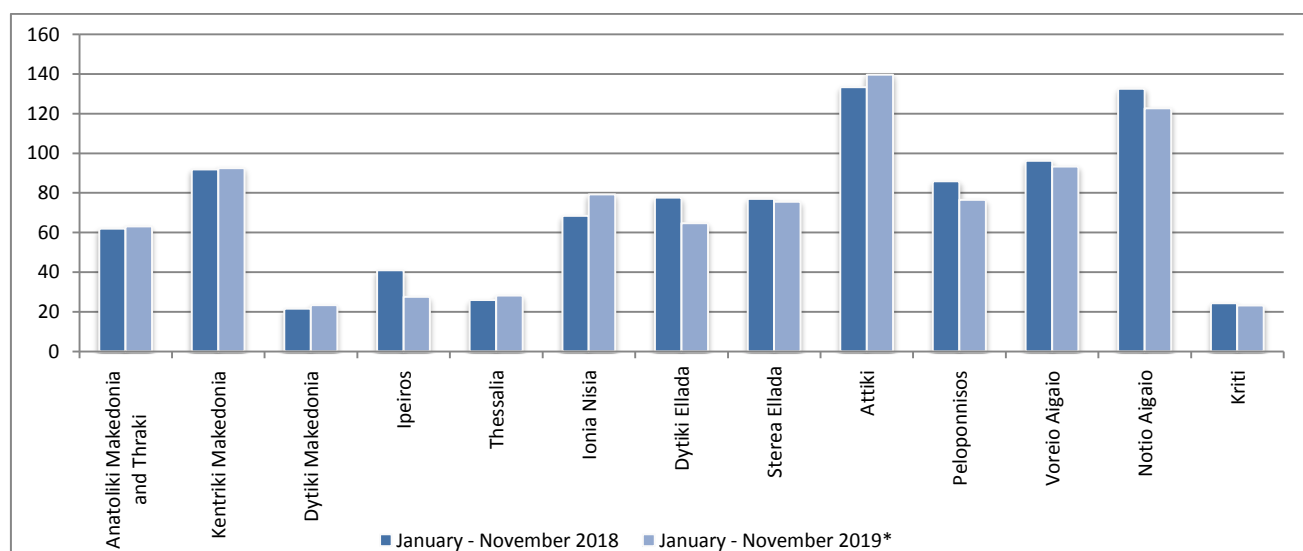
	2017		2018		2019 *
	January - November	Total year	January - November	Total year	January - November
<b>Road accidents</b>	9,933	<b>10,848</b>	9,872	<b>10,737</b>	9,934
<i>Annual change (%)</i>			-0.6	-1.0	0.6
<b>Fatalities</b>	666	<b>731</b>	629	<b>700</b>	644
<i>Annual change (%)</i>			-5.6	-4.2	2.4
<b>Serious injuries</b>	664	<b>706</b>	674	<b>727</b>	588
<i>Annual change (%)</i>			1.5	3.0	-12.8
<b>Slight injuries</b>	11,511	<b>12,565</b>	11,447	<b>12,422</b>	11,145
<i>Annual change (%)</i>			-0.6	-1.1	-2.6

\* Provisional data

**Graph 5: Total road traffic accidents and fatalities, 1991-2018**

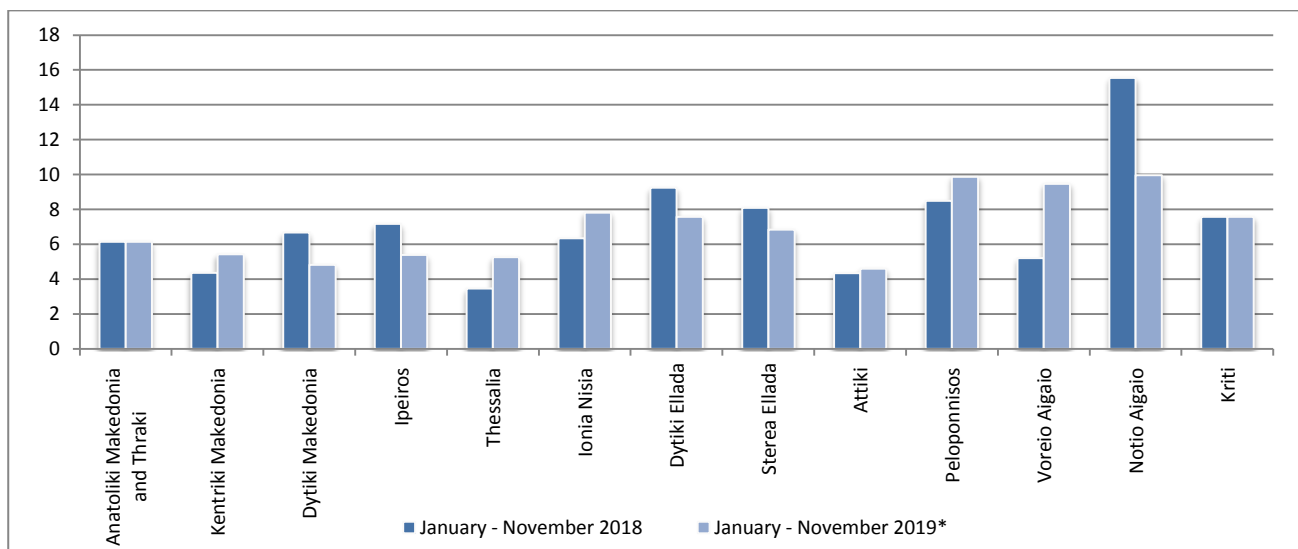


**Graph 6: Road traffic accidents per 100,000 inhabitants**

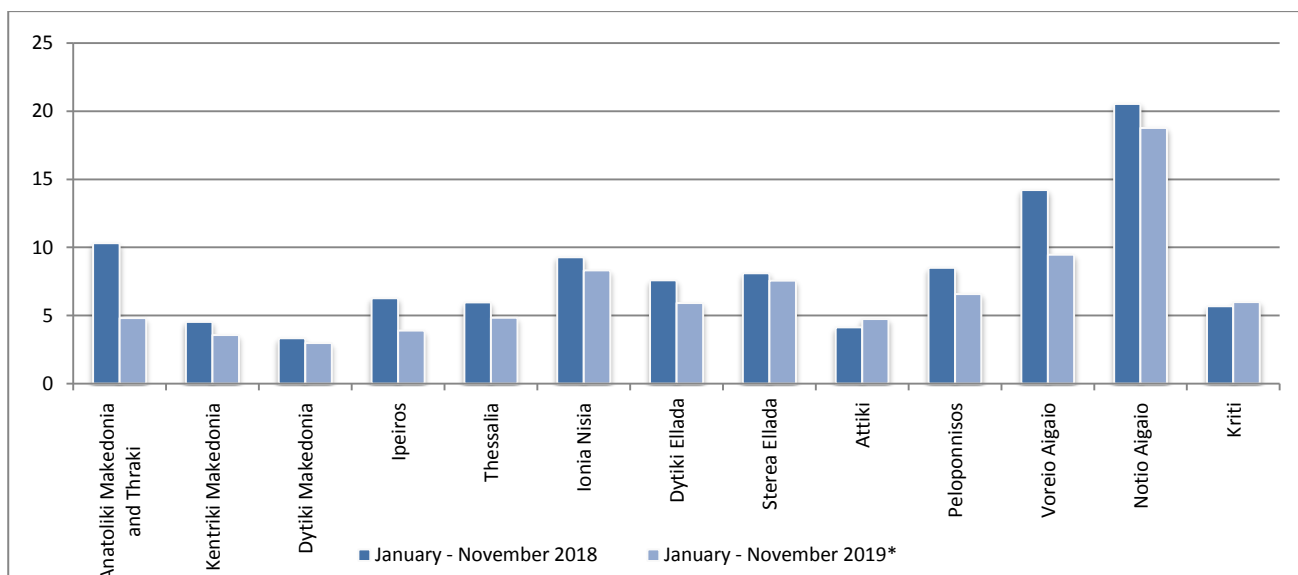


\* Provisional data

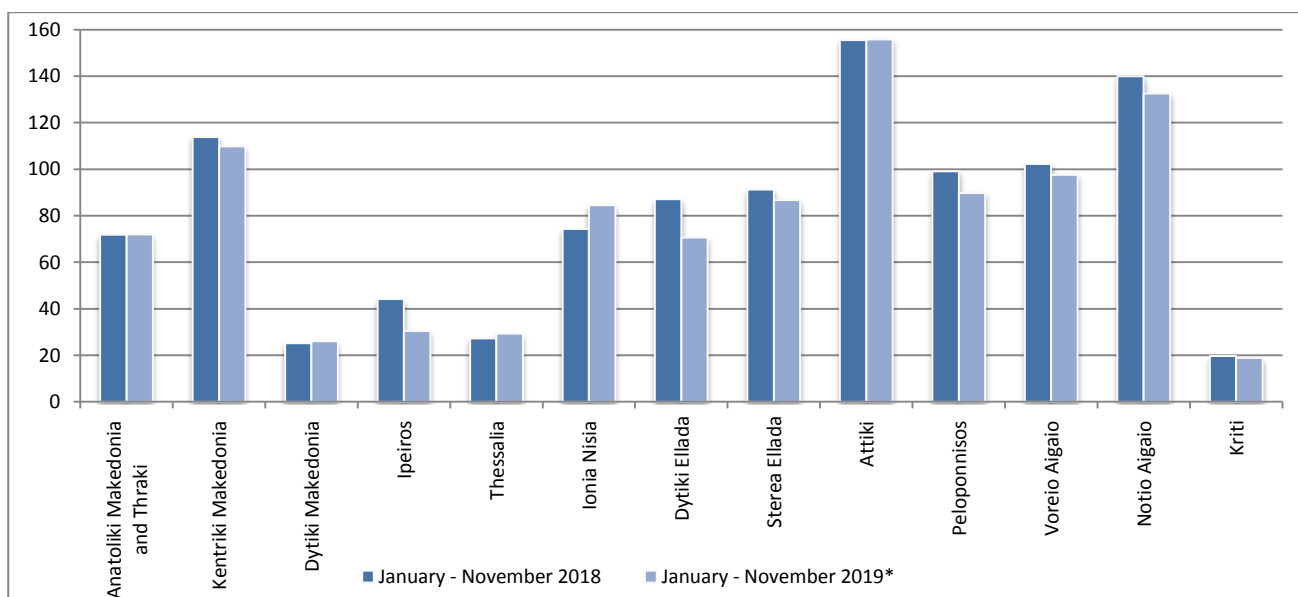
**Graph 7: Fatalities per 100,000 inhabitants**



**Graph 8: Serious injuries per 100,000 inhabitants**



**Graph 9: Slight injuries per 100,000 inhabitants**



\* Provisional data

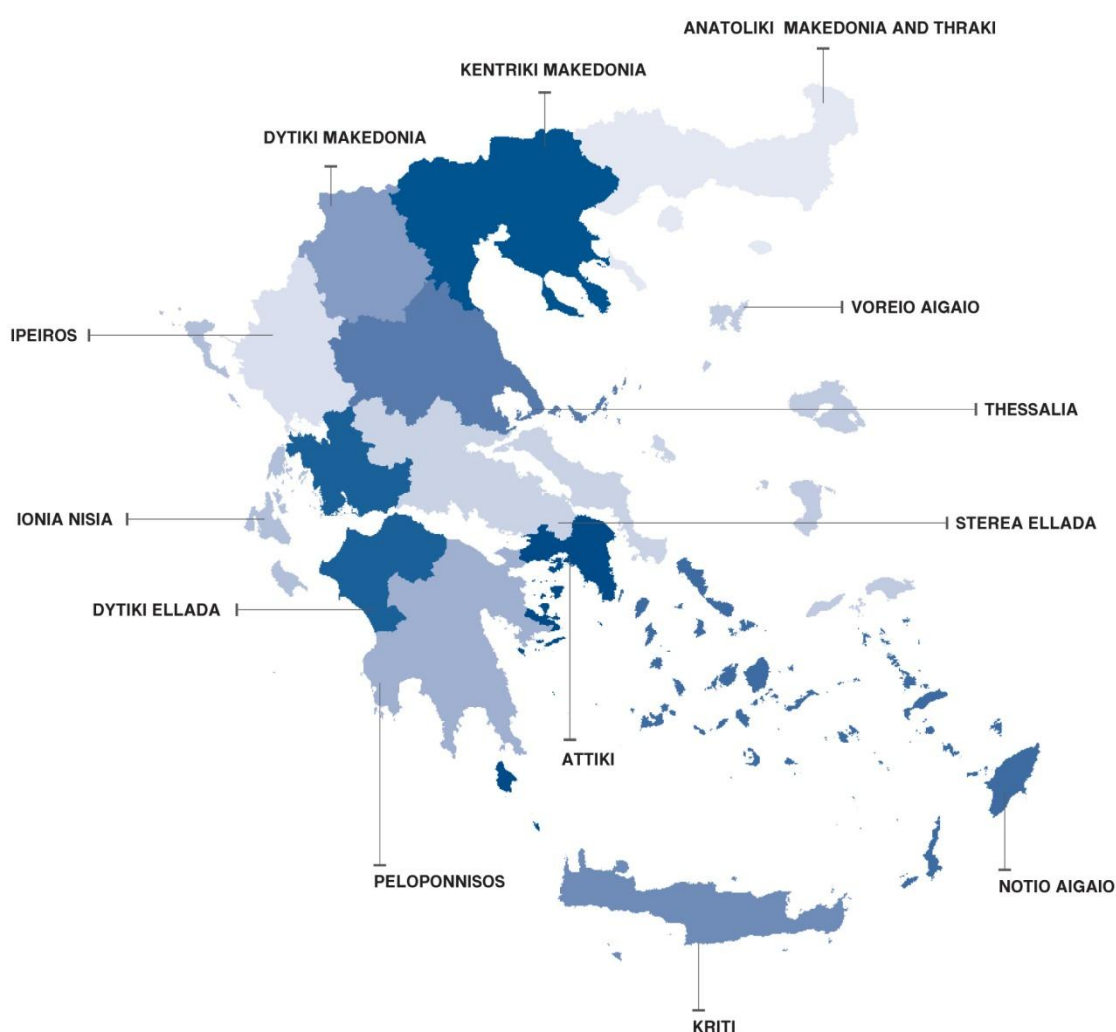
## EXPLANATORY NOTES

### Survey on Road Traffic Accidents

The Survey on Road Traffic Accidents is conducted on a monthly basis and it records, for each region (see map) and department of Greece in accordance with the administrative division of the "KAPODISTRIAS" Plan (law N° 2539/97) and for each month separately, the number of accidents resulting in death or injury, as well as the number of persons injured by categories (drivers, passengers, pedestrians).

On a yearly basis, road traffic accidents are further analyzed. The competent agencies for filling in/collecting the forms on road accidents are the local Police Authorities and the local Port Authorities of Greece.

The lower level of analysis for the place where an injury road accident occurred is the Municipal – Local Commune, which is described by a 8-digit geographic code. Data are collected on a monthly basis. The main variables are the following: place of accident, kind of road, casualties, conditions of road surface and type of road.



**Legal basis** The Survey on Road Traffic Accidents is governed by Council Decision 93/704 of the European Community.

**Reference period** Monthly.

**Availability of data** Provisional data are available 2 months after the reference month.  
Final data are available 10 months after the reference year.



**National definitions** **Road accident** (injury accident): Any accident involving at least one road motor vehicle in motion on a public road or square to which the public has access (excluding yards, industrial sites or vehicle depot of public transport enterprises), resulting in at least one injured or killed person. Accidents with only material damages are not included.

**Fatality (Death):** Any person killed immediately or dying within 30 days as a result of an injury accident (This national definition applies since 01.01.1996)

**Person injured:** Any person who sustained an injury as result of an injury accident, and who normally needs medical treatment.

**Serious injury:** Any person who sustained an injury as result of an injury accident, such as brain damages, mutilation, multiple injuries, which may result in lack of awareness or which are life-threatening.

**Slight injury:** Any person injured who sustained minor and not life-threatening injuries.

**Vehicle:** Include motor vehicles, trolleybuses, motorcycles, bicycles, motorbikes, agricultural and road making machines, animal and hand-drawn vehicles. Railway vehicles are excluded, unless the road accident involves at least one of the aforementioned types of vehicles and therefore, railway vehicles are considered vehicles.

**Methodology** The forms of the survey are filled in by the local Police Authorities and the local Port Authorities as well.

**References** More information about Road Traffic Accidents is available on ELSTAT's website and more specifically at the link: [www.statistics.gr](http://www.statistics.gr) > Population, Social Conditions > Accidents > Road Traffic Accidents.  
It should be noted that previous press releases and time series are available on ELSTAT's website: [www.statistics.gr](http://www.statistics.gr)