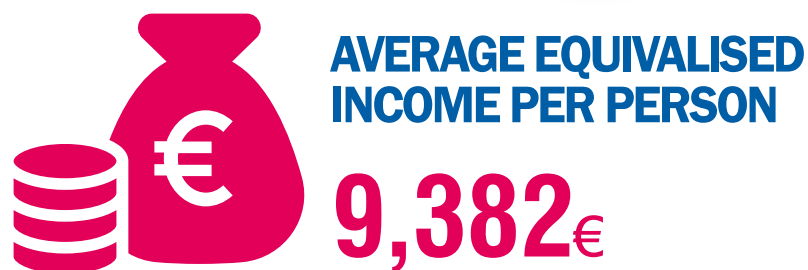
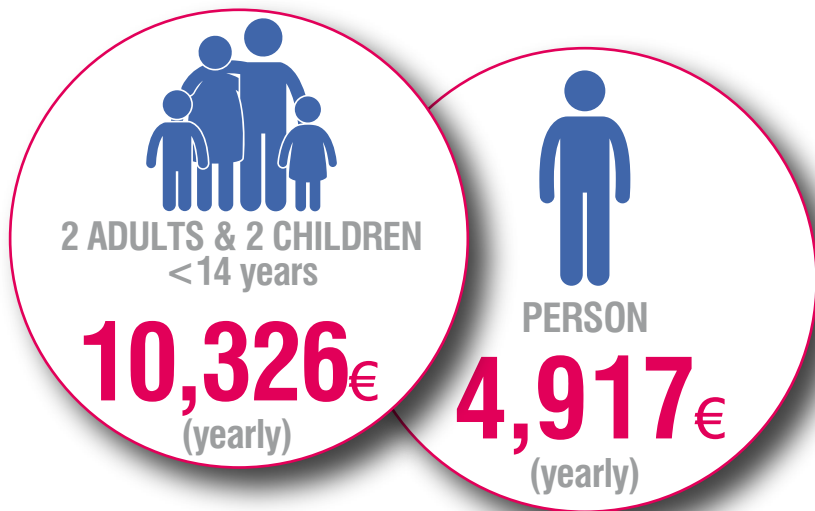


RISK OF POVERTY, 2019*

Survey on Income and Living Conditions of Households

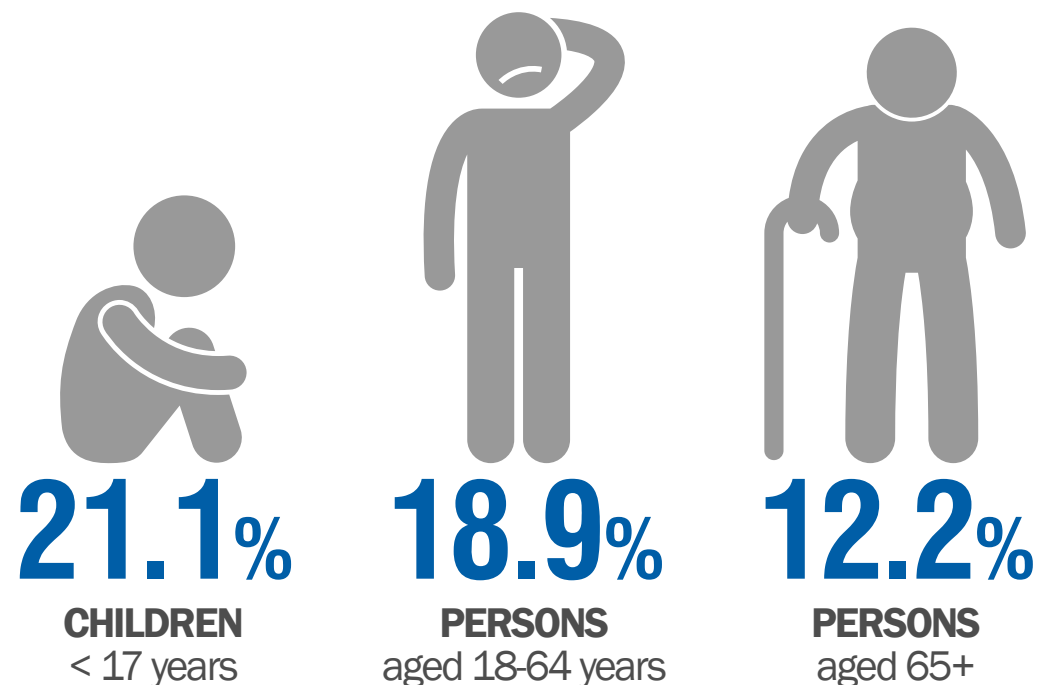
POVERTY THRESHOLD



AT-RISK-OF POVERTY RATE

After social transfers

is the share of persons living in households whose the total equivalised disposable income is below the 60% of the national median equivalised disposable income

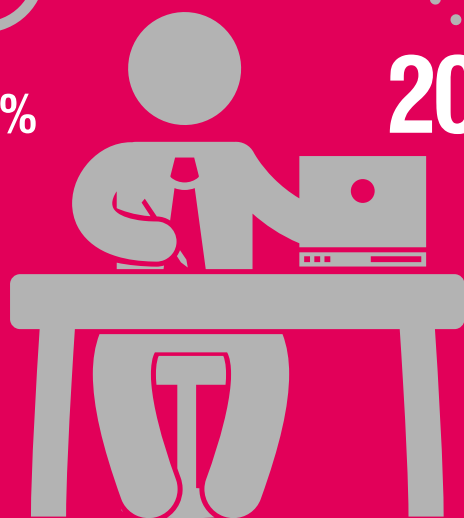


RISK OF POVERTY FOR EMPLOYED PERSONS

FULL-TIME



PART-TIME



POPULATION AT-RISK-OF POVERTY (%)

