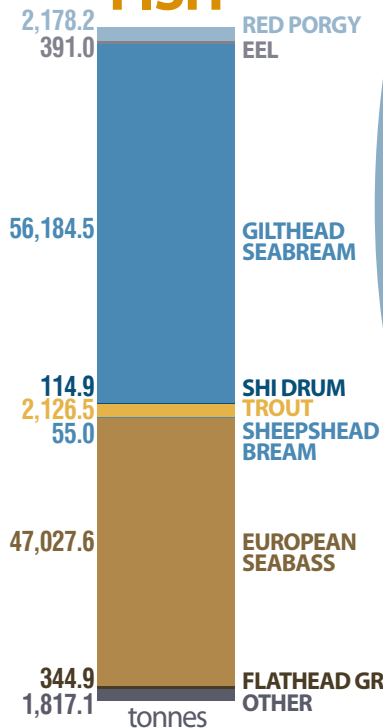
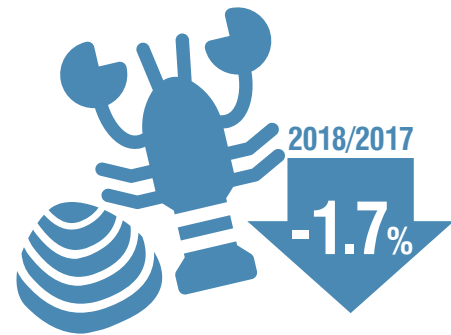


AQUACULTURE SURVEY, 2018

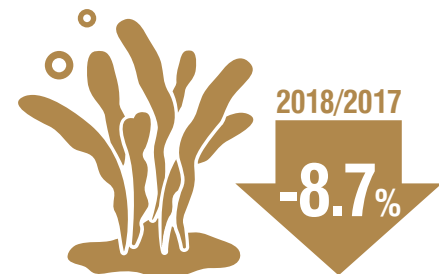
+3.8%
2018/2017
110,239.6
tonnes
FISH



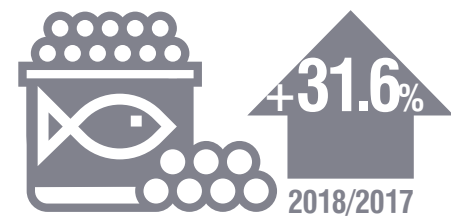
22,088.0
tonnes
MOLLUSCS AND CRUSTACEANS



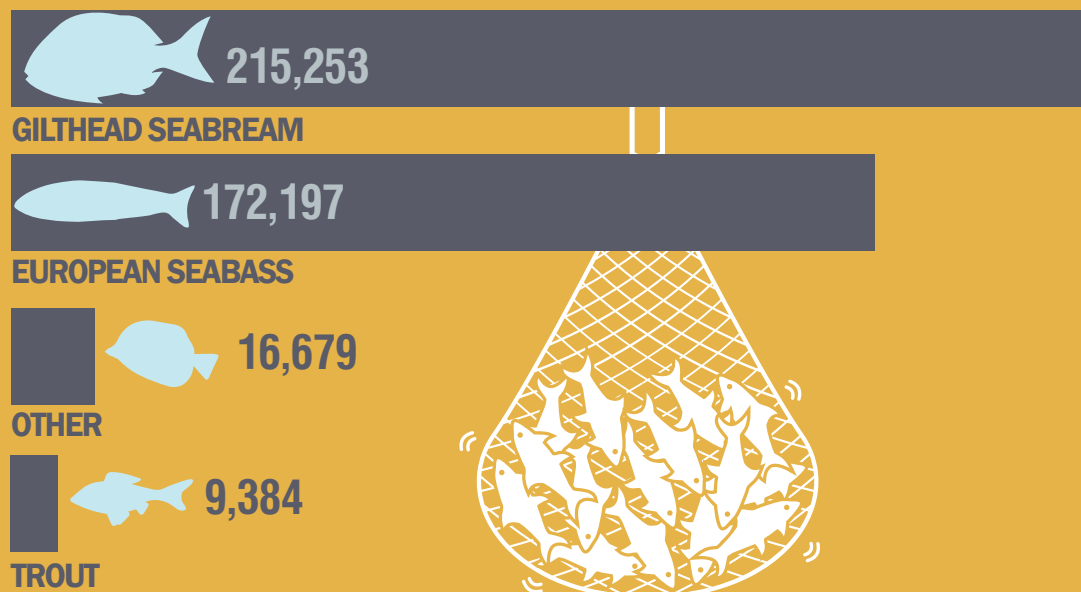
93.8
tonnes
AQUATIC PLANTS & SEAWEEDS



2.1
tonnes
FISH EGGS



PRODUCTION OF FISH LARVA IN HATCHERIES AND NURSERIES (thousand juveniles)



EMPLOYED PERSONS

