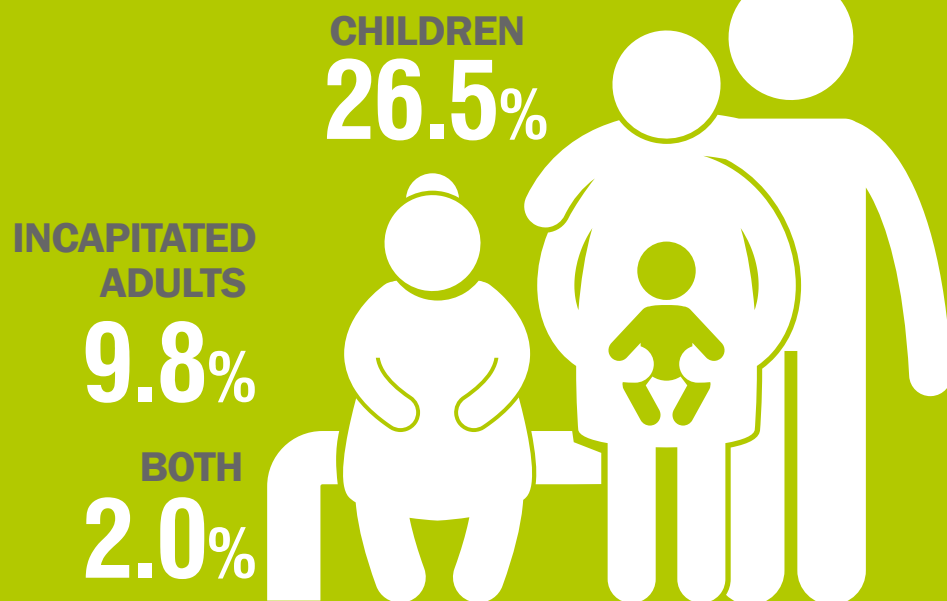


RECONCILIATION OF WORK AND FAMILY LIFE, 2018

(refer to persons aged 18-64 years and children aged up to 14 years)

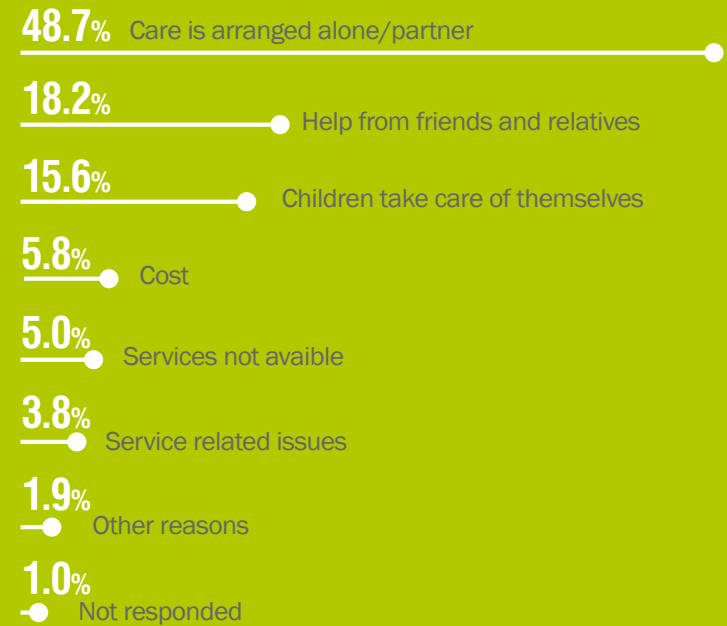
CARE OF CHILDREN OR INCAPITATED ADULTS



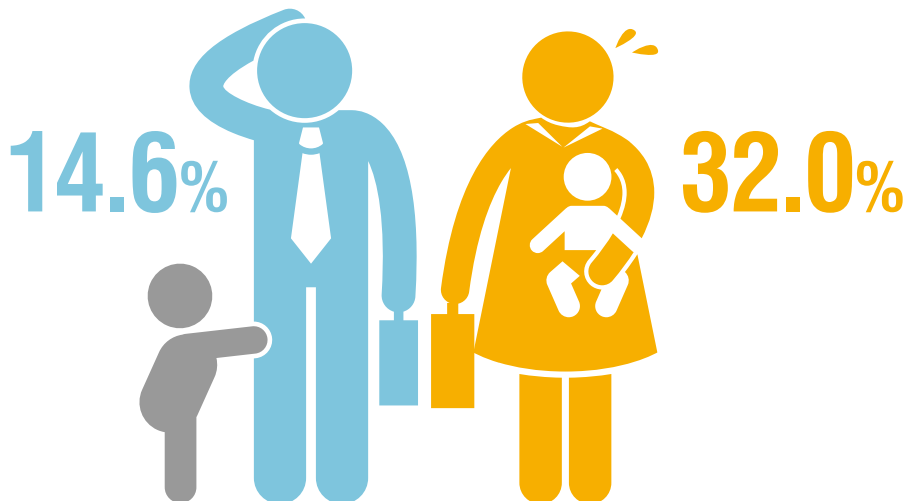
31.9%
of persons who take care of children

USE CHILDCARE SERVICES

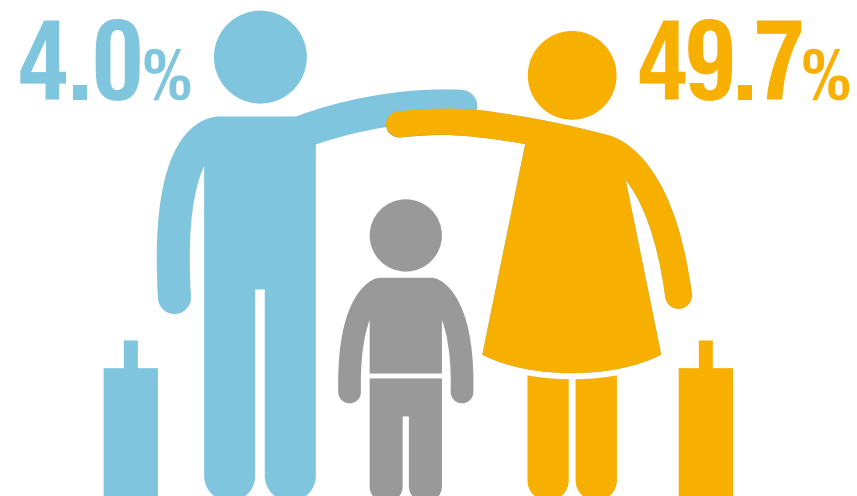
REASONS FOR NOT USING CHILDCARE SERVICES



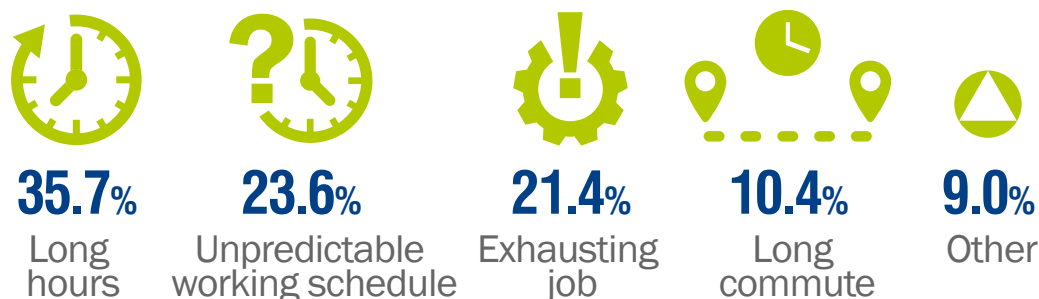
EFFECT OF CHILDCARE RESPONSIBILITIES ON EMPLOYMENT



CAREER BREAK ON ACCOUNT OF CHILDCARE



MAIN OBSTACLES AT WORK



LENGTH OF CAREER BREAK FOR CHILDCARE

