

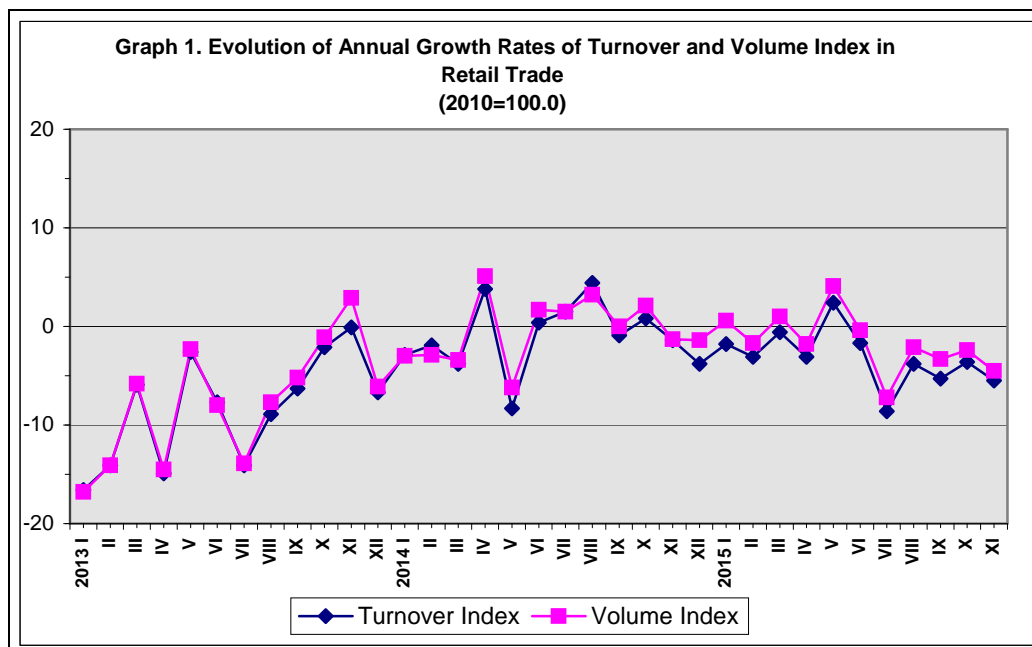


PRESS RELEASE

TURNOVER INDEX IN RETAIL TRADE: November 2015

The Hellenic Statistical Authority announces the turnover and volume indices in retail trade with base year 2010=100.0 for November 2015 according to provisional and reduced data of a typical month, as follows:

- The overall turnover index in retail trade in November 2015 recorded a decrease of 5.5% compared with the corresponding index of November 2014, while compared with the corresponding index of October 2015 recorded a decrease of 4.7% (Tables 1,2).
- The overall volume index in retail trade (i.e. turnover in retail trade at constant prices) in November 2015, recorded a decrease of 4.5% compared with the corresponding index of November 2014, while compared with the corresponding index of October 2015, recorded a decrease of 3.4% (Tables 1,2).
- The seasonally adjusted (after eliminating the monthly effects e.g. the beginning of the school year, holidays, tourist period etc) overall turnover index in November 2015 compared with the corresponding index of October 2015 recorded a decrease of 1.8% (Table 5).
- The seasonally adjusted overall volume index in November 2015 compared with the corresponding index of October 2015 recorded a decrease of 1.7% (Table 5).



Information:

Economic and Short-Term Indicators Division

Retail Sales Value Index Section

ret.sal@statistics.gr

Fax: 00302131352729

Ioannis Nikolaidis

Tel: 0030 2131352127

i.nikolaidis@statistics.gr

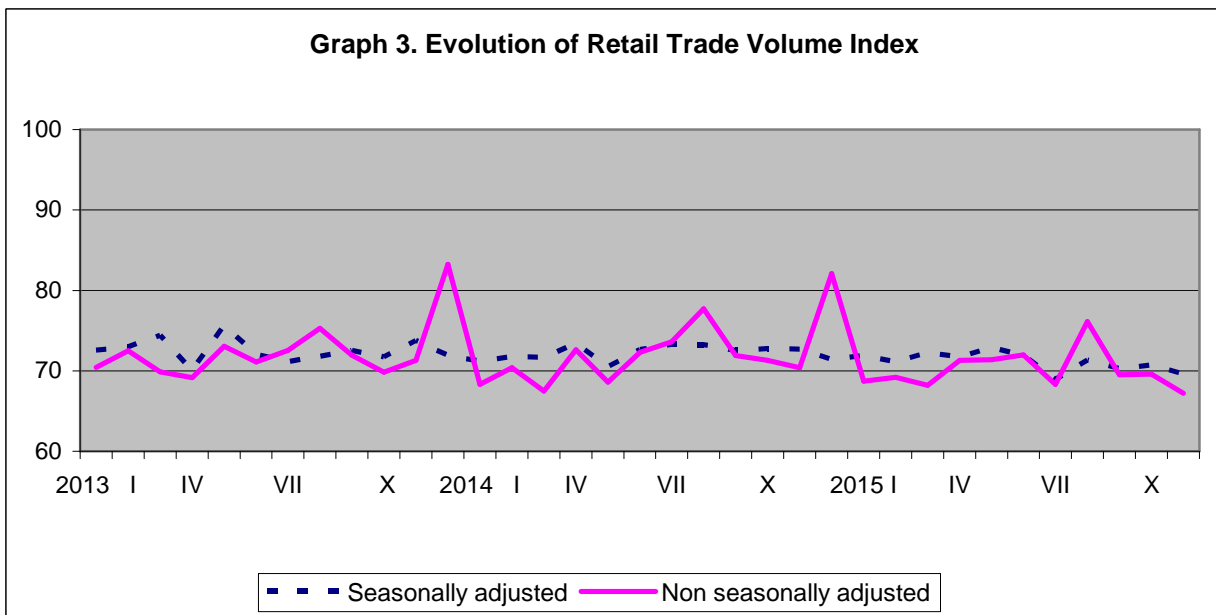
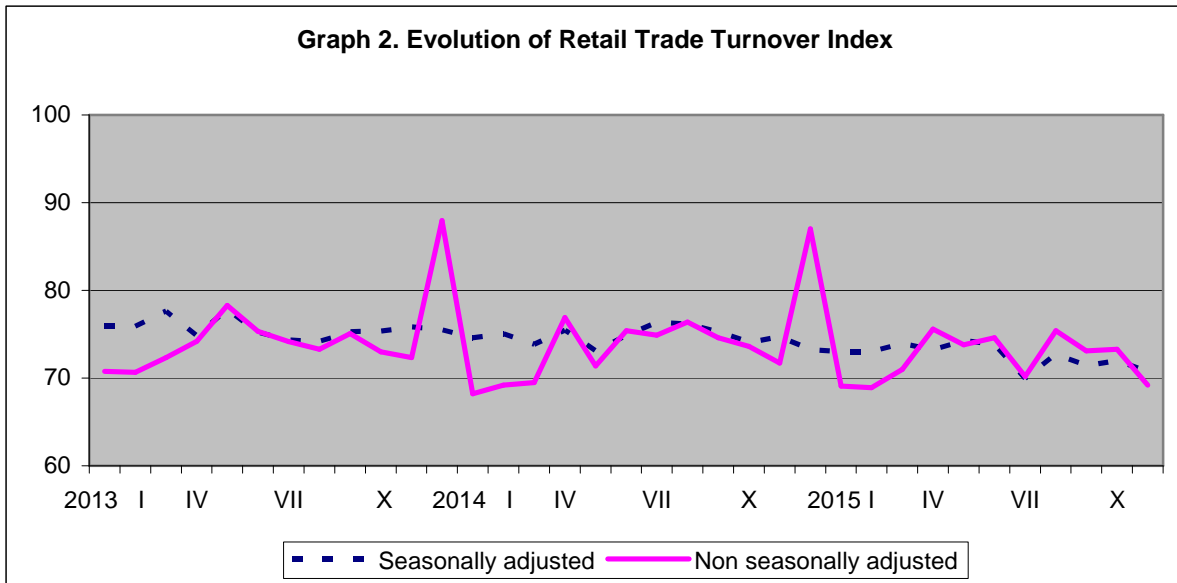
Aikaterini Mertika

Tel: 0030 2131352127

a.mertika@statistics.gr

Time series of the index is available on the ELSTAT website : <http://www.statistics.gr/en/statistics/-/publication/DKT39/>

Graphs 2 and 3 depict the evolution of seasonally and non seasonally adjusted overall indices of turnover and volume in retail trade.



It should be noted that the whole series with seasonally adjusted indices is *recalculated* every time a *new* observation is added in time series. Therefore, the seasonally adjusted data differ from the published data of the previous Press Release.

It should be noted that the Retail Trade Turnover and Volume Index of October 2015, which had been announced as provisional in the previous press release, has been revised as follows:

Retail Trade Store Categories	Turnover Index of October 2015				Volume Index of October 2015			
	Provisional	Annual change (%)	Revised	Annual change (%)	Provisional	Annual change (%)	Revised	Annual change (%)
Overall Index	71.6	-3.9	71.8	-3.6	69.5	-2.5	69.6	-2.4
Overall Index (except automotive fuel)	73.2	-0.5	73.3	-0.4	71.4	-0.6	71.5	-0.4
I. Main store categories								
Food sector	79.8	-1.1	79.8	-1.1	75.4	-2.0	75.4	-2.0
Non-food sector (except automotive fuel)	66.3	0.3	66.6	0.8	67.3	1.8	67.5	2.1
II. Specialized store categories								
Supermarkets	81.7	-1.7	81.6	-1.8	78.6	-2.5	78.6	-2.5
Department stores	74.5	-2.5	74.4	-2.6	78.8	-0.9	78.7	-1.0
Automotive fuel	65.4	-17.9	65.8	-17.4	65.6	-5.9	66.0	-5.3
Food-beverages-tobacco	68.6	3.0	68.7	3.2	64.4	1.7	64.5	1.9
Pharmaceutical products, cosmetics	63.3	-2.3	63.7	-1.7	65.8	-2.5	66.3	-1.8
Clothing and footwear	70.3	4.3	71.4	5.9	66.6	5.9	67.6	7.5
Furniture, electrical equipment, household equipment	60.3	-4.1	59.9	-4.8	69.0	-0.9	68.5	-1.6
Books, Stationery, other goods	83.5	7.6	83.6	7.7	90.1	9.3	90.3	9.6
Retail sale not in stores	46.6	-17.4	46.8	-17.0	:	:	:	:

: Volume Index for the "Retail sale not in stores" is not calculated.

The final indices of the specialized store categories of October 2015 have been changed in relation to the corresponding provisional indices published in the previous press release. The changes are due to new data of the surveyed enterprises mainly in the economic activities of "Automotive fuel", "Pharmaceutical products, cosmetics", "Clothing and footwear" and "Furniture, electrical equipment, household equipment".

1. Annual comparison of the turnover index

The -5.5% change of the turnover index in November 2015 compared with the corresponding index in November 2014 is due to the following changes in the main retail trade store categories:

Specialized store categories	Annual rate %
Books, Stationery, other goods	2.9
Pharmaceutical products, cosmetics	-0.8
Furniture, electrical equipment, household equipment	-3.8
Supermarkets	-6.3
Automotive fuel	-14.9

2. Annual comparison of the volume index

The -4.5% change of the volume index in November 2015 compared with the corresponding index in November 2014 is due to the following changes in the main categories of retail business:

Specialized store categories	Annual rate %
Books, Stationery, other goods	4.7
Pharmaceutical products, cosmetics	-0.8
Furniture, electrical equipment, household equipment	-1.6
Automotive fuel	-4.6
Supermarket	-7.1

**Table 1. Annual rates of change of turnover index and volume index in retail trade
(Reduced data on the basis of a typical month)**

Base year: 2010=100.0

Retail Trade Store Categories	Turnover Index			Volume Index		
	November 2015*	November 2014	Annual change (%)	November 2015*	November 2014	Annual change (%)
Overall Index	68.4	72.4	-5.5	67.2	70.4	-4.5
Overall Index (except automotive fuel)	69.2	71.7	-3.5	68.5	71.0	-3.5
I. Main store categories						
Food sector	73.3	77.4	-5.3	69.3	73.9	-6.2
Automotive fuel sector	65.2	76.6	-14.9	65.9	69.1	-4.6
Non-food sector (except automotive fuel)	65.0	65.8	-1.2	68.2	68.0	0.3
II. Specialized store categories						
Supermarkets	75.0	80.0	-6.3	72.2	77.7	-7.1
Department stores	75.0	80.7	-7.1	83.1	87.6	-5.1
Automotive fuel	65.2	76.6	-14.9	65.9	69.1	-4.6
Food-beverages-tobacco	63.4	62.5	1.4	59.5	59.5	0.0
Pharmaceutical products, cosmetics	60.6	61.1	-0.8	63.5	64.0	-0.8
Clothing and footwear	69.1	67.8	1.9	72.5	69.1	4.9
Furniture, electrical equipment, household equipment	58.3	60.6	-3.8	67.5	68.6	-1.6
Books, Stationery, other goods	84.7	82.3	2.9	91.9	87.8	4.7
Retail sale not in stores	42.4	56.4	-24.8	:	:	:

* Provisional data

: Volume Index for the "Retail sale not in stores" is not calculated

**Table 2. Monthly rates of change of turnover index and volume index in retail trade
(Reduced data on the basis of a typical month)**

Retail Trade Store Categories	Base year: 2010=100.0					
	Turnover Index			Volume Index		
	November 2015*	October 2015	Monthly change (%)	November 2015*	October 2015	Monthly change (%)
Overall Index	68.4	71.8	-4.7	67.2	69.6	-3.4
Overall Index (except automotive fuel)	69.2	73.3	-5.6	68.5	71.5	-4.2
I. Main store categories						
Food sector	73.3	79.8	-8.1	69.3	75.4	-8.1
Automotive fuel sector	65.2	65.8	-0.9	65.9	66.0	-0.2
Non-food sector (except automotive fuel)	65.0	66.6	-2.4	68.2	67.5	1.0
II. Specialized store categories						
Supermarkets	75.0	81.6	-8.1	72.2	78.6	-8.1
Department stores	75.0	74.4	0.8	83.1	78.7	5.6
Automotive fuel	65.2	65.8	-0.9	65.9	66.0	-0.2
Food-beverages-tobacco	63.4	68.7	-7.7	59.5	64.5	-7.8
Pharmaceutical products, cosmetics	60.6	63.7	-4.9	63.5	66.3	-4.2
Clothing and footwear	69.1	71.4	-3.2	72.5	67.6	7.2
Furniture, electrical equipment, household equipment	58.3	59.9	-2.7	67.5	68.5	-1.5
Books, Stationery, other goods	84.7	83.6	1.3	91.9	90.3	1.8
Retail sale not in stores	42.4	46.8	-9.4	:	:	:

* Provisional data

: Volume Index for the "Retail sale not in stores" is not calculated

Table 3. Evolution of the turnover in retail trade
(Reduced data on the basis of a typical month)

Base year: 2010=100.0

Year-month	Overall index		Overall index (except automotive fuel)		Food sector		Automotive fuel sector		Non-food sector (except automotive fuel)	
	Index	Annual change (%)	Index	Annual change (%)	Index	Annual change (%)	Index	Annual change (%)	Index	Annual change (%)
2013 I	72.4	-16.6	70.8	-16.3	76.9	-15.2	81.4	-17.7	64.6	-17.2
II	72.0	-14.1	70.7	-13.8	77.4	-14.1	79.1	-15.6	63.9	-12.9
III	73.7	-5.9	72.4	-6.4	83.2	-2.5	81.3	-3.4	60.5	-12.0
IV	74.1	-14.9	74.2	-13.3	80.2	-15.2	74.1	-22.3	68.1	-10.3
V	78.0	-2.6	78.3	-3.2	89.6	-2.4	76.8	1.9	66.5	-4.2
VI	75.9	-7.7	75.3	-8.5	86.0	-9.0	79.2	-2.2	64.2	-7.5
VII	74.6	-14.1	74.2	-14.3	82.2	-12.0	77.6	-12.1	66.0	-16.7
VIII	74.8	-8.9	73.3	-9.5	86.1	-6.3	83.5	-4.7	59.9	-13.9
IX	76.1	-6.3	75.1	-5.9	83.7	-5.7	82.2	-7.0	66.4	-5.8
X	73.9	-2.1	73.0	-2.7	79.1	-2.3	79.2	1.8	67.1	-2.5
XI	73.4	-0.1	72.3	-0.2	77.1	-2.7	79.8	1.6	67.9	3.6
XII	87.6	-6.7	87.9	-7.0	91.8	-6.8	85.9	-3.6	84.8	-6.9
<i>Average</i>	<i>75.6</i>	<i>-8.6</i>	<i>74.8</i>	<i>-8.6</i>	<i>82.8</i>	<i>-8.0</i>	<i>80.0</i>	<i>-7.5</i>	<i>66.7</i>	<i>-9.1</i>
2014 I	70.3	-2.9	68.2	-3.7	74.2	-3.6	81.4	0.0	62.3	-3.5
II	70.6	-1.9	69.2	-2.0	76.7	-0.8	77.8	-1.7	61.8	-3.3
III	70.9	-3.8	69.5	-4.0	80.5	-3.3	78.4	-3.5	58.1	-4.0
IV	76.9	3.8	76.9	3.6	85.0	5.9	78.2	5.5	68.5	0.6
V	71.6	-8.3	71.4	-8.8	79.1	-11.7	73.1	-4.8	63.5	-4.6
VI	76.2	0.4	75.4	0.1	83.9	-2.4	80.8	2.0	66.7	3.9
VII	75.7	1.5	74.9	0.9	81.5	-0.9	79.8	2.8	68.1	3.2
VIII	78.1	4.4	76.4	4.2	90.9	5.6	86.2	3.2	61.4	2.5
IX	75.4	-0.9	74.6	-0.7	82.0	-2.0	80.0	-2.7	66.9	0.8
X	74.5	0.8	73.6	0.8	80.7	2.0	79.7	0.6	66.1	-1.5
XI	72.4	-1.4	71.7	-0.8	77.4	0.4	76.6	-4.0	65.8	-3.1
XII	84.3	-3.8	87.0	-1.0	92.7	1.0	72.7	-15.4	81.2	-4.2
<i>Average</i>	<i>74.7</i>	<i>-1.2</i>	<i>74.1</i>	<i>-0.9</i>	<i>82.1</i>	<i>-0.8</i>	<i>78.7</i>	<i>-1.6</i>	<i>65.9</i>	<i>-1.2</i>
2015 I	69.0	-1.8	69.1	1.3	75.4	1.6	69.4	-14.7	62.5	0.3
II	68.4	-3.1	68.9	-0.4	76.3	-0.5	67.0	-13.9	61.1	-1.1
III	70.5	-0.6	71.0	2.2	79.0	-1.9	69.5	-11.4	62.6	7.7
IV	74.5	-3.1	75.6	-1.7	83.9	-1.3	70.8	-9.5	66.9	-2.3
V	73.3	2.4	73.8	3.4	81.2	2.7	72.3	-1.1	66.0	3.9
VI	74.9	-1.7	74.6	-1.1	84.2	0.4	77.6	-4.0	64.6	-3.1
VII	69.2	-8.6	70.2	-6.3	78.9	-3.2	65.6	-17.8	61.1	-10.3
VIII	75.1	-3.8	75.4	-1.3	88.8	-2.3	74.8	-13.2	61.4	0.0
IX	71.4	-5.3	73.1	-2.0	80.4	-2.0	65.0	-18.8	65.4	-2.2
X	71.8	-3.6	73.3	-0.4	79.8	-1.1	65.8	-17.4	66.6	0.8
XI*	68.4	-5.5	69.2	-3.5	73.3	-5.3	65.2	-14.9	65.0	-1.2

*Provisional data

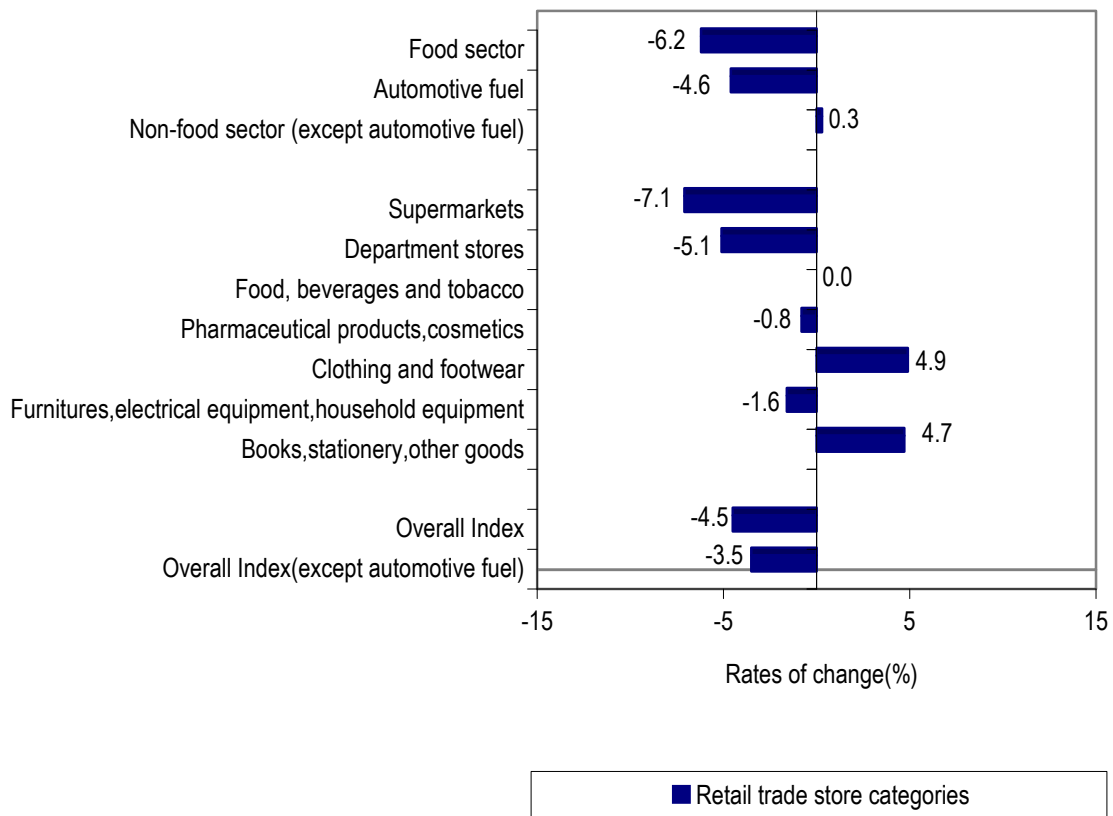
**Table 4. Evolution of the turnover in volume
(Reduced data. on the basis of a typical month)**

Base year: 2010=100.0

Year-month	Overall index		Overall index (except automotive fuel)		Food sector		Automotive fuel sector		Non-food sector (except automotive fuel)	
	Index	Annual change (%)	Index	Annual change (%)	Index	Annual change (%)	Index	Annual change (%)	Index	Annual change (%)
2013 I	70.4	-16.8	71.0	-16.3	72.6	-15.9	68.2	-18.8	68.7	-16.5
II	72.5	-14.1	74.3	-13.4	72.9	-14.6	64.3	-17.1	75.4	-11.5
III	69.9	-5.8	70.7	-6.7	77.8	-4.1	66.6	-1.2	61.6	-11.0
IV	69.1	-14.5	70.7	-13.8	74.4	-17.1	62.5	-16.4	66.5	-9.7
V	73.1	-2.3	74.9	-3.4	82.9	-4.3	65.3	5.3	65.5	-2.7
VI	71.1	-8.0	72.1	-8.8	79.7	-11.1	67.0	-2.5	63.3	-5.9
VII	72.5	-13.9	74.4	-14.2	77.1	-13.6	64.8	-11.5	70.6	-15.0
VIII	75.3	-7.7	76.7	-9.1	81.2	-7.3	69.3	0.2	69.7	-11.9
IX	71.9	-5.2	72.7	-5.6	79.1	-6.4	69.0	-1.9	65.7	-4.4
X	69.8	-1.1	70.4	-2.4	74.8	-3.1	67.9	6.9	65.8	-1.4
XI	71.3	2.9	71.9	2.9	73.5	-2.9	69.2	3.8	70.3	10.4
XII	83.3	-6.1	85.4	-6.5	87.3	-7.1	74.1	-2.2	83.8	-5.4
<i>Average</i>	<i>72.5</i>	<i>-8.1</i>	<i>73.8</i>	<i>-8.4</i>	<i>77.8</i>	<i>-9.1</i>	<i>67.3</i>	<i>-5.3</i>	<i>68.9</i>	<i>-7.6</i>
2014 I	68.3	-3.0	67.8	-4.5	70.2	-3.3	70.3	3.1	65.7	-4.4
II	70.4	-2.9	71.0	-4.4	73.1	0.3	66.9	4.0	69.9	-7.3
III	67.5	-3.4	67.6	-4.4	76.0	-2.3	67.0	0.6	58.4	-5.2
IV	72.6	5.1	74.2	5.0	80.2	7.8	66.3	6.1	67.6	1.7
V	68.6	-6.2	70.3	-6.1	75.2	-9.3	61.8	-5.4	64.9	-0.9
VI	72.3	1.7	73.3	1.7	79.8	0.1	67.8	1.2	66.1	4.4
VII	73.6	1.5	75.1	0.9	78.2	1.4	66.5	2.6	71.8	1.7
VIII	77.7	3.2	78.4	2.2	87.5	7.8	72.9	5.2	68.3	-2.0
IX	71.9	0.0	72.8	0.1	78.4	-0.9	68.3	-1.0	66.4	1.1
X	71.3	2.1	71.8	2.0	76.9	2.8	69.7	2.7	66.1	0.5
XI	70.4	-1.3	71.0	-1.3	73.9	0.5	69.1	-0.1	68.0	-3.3
XII	82.1	-1.4	85.7	0.4	88.8	1.7	70.1	-5.4	82.3	-1.8
<i>Average</i>	<i>72.2</i>	<i>-0.4</i>	<i>73.3</i>	<i>-0.7</i>	<i>78.2</i>	<i>0.5</i>	<i>68.1</i>	<i>1.2</i>	<i>68.0</i>	<i>-1.3</i>
2015 I	68.7	0.6	69.2	2.1	71.6	2.0	71.1	1.1	67.1	2.1
II	69.2	-1.7	70.6	-0.6	72.2	-1.2	65.8	-1.6	69.9	0.0
III	68.2	1.0	69.5	2.8	74.2	-2.4	65.6	-2.1	64.5	10.4
IV	71.3	-1.8	73.2	-1.3	78.7	-1.9	66.0	-0.5	67.5	-0.1
V	71.4	4.1	73.1	4.0	76.9	2.3	66.1	7.0	69.2	6.6
VI	72.0	-0.4	72.9	-0.5	79.5	-0.4	70.5	4.0	65.8	-0.5
VII	68.3	-7.2	70.6	-6.0	75.3	-3.7	59.5	-10.5	65.8	-8.4
VIII	76.1	-2.1	77.8	-0.8	84.6	-3.3	70.7	-3.0	70.4	3.1
IX	69.5	-3.3	71.7	-1.5	75.9	-3.2	64.1	-6.1	67.3	1.4
X	69.6	-2.4	71.5	-0.4	75.4	-2.0	66.0	-5.3	67.5	2.1
XI*	67.2	-4.5	68.5	-3.5	69.3	-6.2	65.9	-4.6	68.2	0.3

*Provisional data

Graph 4. Annual rates of change (%) of the volume index in retail trade, between November 2015 and November 2014



Graph 5. Monthly rates of change (%) of the volume index in retail trade, between November 2015 and October 2015

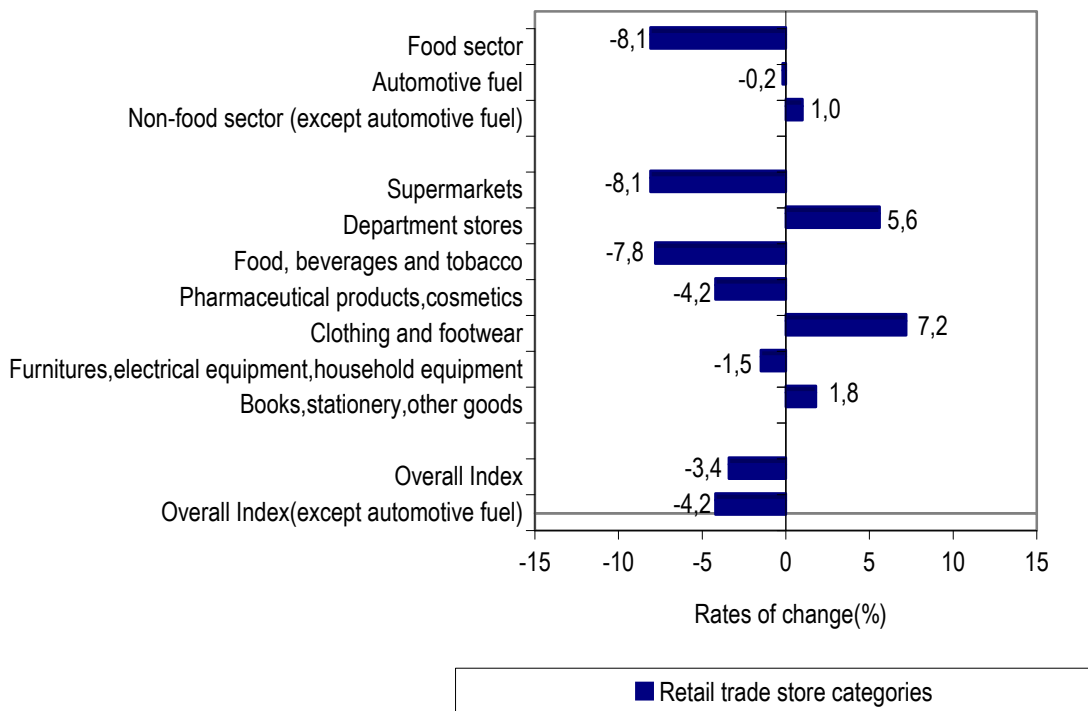


Table 5. Monthly changes of Seasonally Adjusted Turnover and Volume Index

Base Year: 2010=100.0

Retail Trade Store Categories	Turnover Index			Volume Index		
	November 2015*	October 2015	Monthly change (%)	November 2015*	October 2015	Monthly change (%)
Overall Index	70.7	72.0	-1.8	69.6	70.8	-1.7
Overall Index (except automotive fuel)	72.2	73.4	-1.6	71.6	72.9	-1.7
I. Main store categories						
Food sector	78.5	81.2	-3.3	73.7	76.7	-3.8
Automobile fuel	65.6	65.8	-0.3	65.8	66.0	-0.3
Non-food sector (except automotive fuel)	65.1	65.8	-1.1	69.0	69.4	-0.6
II Specialized store categories						
Supermarkets	80.1	83.0	-3.5	76.8	79.9	-3.9
Department stores	70.2	70.8	-0.8	78.4	78.7	-0.4
Automotive fuel	65.6	65.8	-0.3	65.8	66.0	-0.3
Food-beverages-tobacco	69.8	70.5	-0.9	65.4	66.3	-1.4
Pharmaceutical products. cosmetics	64.4	64.4	-0.1	66.7	66.9	-0.2
Clothing and footwear	66.5	67.0	-0.7	72.4	72.6	-0.3
Furniture, electrical equipment, household equipment	54.1	54.3	-0.3	63.5	63.8	-0.4
Books, Stationery, other goods	88.5	89.8	-1.4	95.7	97.2	-1.6
Retail sales not in stores	47.5	51.2	-7.3	:	:	:

* Provisional data

: Volume Index for the "Retail sale not in stores" is not calculated

Table 6. Monthly evolution of the seasonally adjusted turnover index

Base year: 2010=100.0

Year-month	Overall index		Overall index (except automotive fuel)		Food sector		Automotive fuel sector		Non-food sector (except automotive fuel)	
	Index	Monthly change (%)	Index	Monthly change (%)	Index	Monthly change (%)	Index	Monthly change (%)	Index	Monthly change (%)
2013 I	75.9	-3.9	75.2	-4.6	83.1	-2.6	79.8	-5.4	67.1	-5.2
II	75.9	0.0	75.2	0.0	82.3	-1.0	79.3	-0.5	67.5	0.6
III	77.6	2.3	76.7	2.0	85.3	3.7	81.6	2.9	66.7	-1.1
IV	74.9	-3.6	73.0	-4.8	80.2	-6.0	75.0	-8.1	67.4	1.0
V	77.9	4.0	80.8	10.7	91.7	14.3	82.5	10.1	66.9	-0.7
VI	75.2	-3.4	74.6	-7.7	82.1	-10.5	79.8	-3.3	65.3	-2.4
VII	74.3	-1.2	73.1	-2.0	81.5	-0.7	78.3	-1.8	65.9	0.9
VIII	74.2	-0.2	73.0	-0.1	81.5	0.0	80.3	2.5	65.3	-0.9
IX	75.3	1.5	74.5	2.0	82.3	1.0	81.2	1.2	66.6	2.0
X	75.4	0.1	74.1	-0.6	82.0	-0.3	79.4	-2.3	66.8	0.2
XI	75.8	0.6	75.0	1.3	82.4	0.5	80.5	1.4	68.0	1.8
XII	75.5	-0.4	73.7	-1.8	81.1	-1.7	82.4	2.4	66.4	-2.4
<i>Average</i>	<i>75.7</i>		<i>74.9</i>		<i>83.0</i>		<i>80.0</i>		<i>66.7</i>	
2014 I	74.6	-1.2	73.2	-0.6	81.3	0.3	81.2	-1.5	65.4	-1.5
II	75.0	0.6	74.0	1.1	81.9	0.7	79.6	-1.9	65.9	0.7
III	73.8	-1.6	73.3	-1.0	80.8	-1.3	79.4	-0.3	64.2	-2.5
IV	75.4	2.2	75.3	2.7	83.1	2.9	79.5	0.2	66.0	2.7
V	73.1	-3.1	73.2	-2.8	80.8	-2.9	77.0	-3.1	65.2	-1.1
VI	74.8	2.4	74.4	1.6	80.9	0.2	79.4	3.1	67.4	3.4
VII	76.3	2.0	75.2	1.1	82.2	1.5	80.7	1.6	68.7	1.8
VIII	76.2	-0.2	75.1	-0.1	83.6	1.8	81.3	0.7	66.4	-3.3
IX	75.3	-1.1	74.2	-1.3	81.8	-2.1	79.2	-2.5	66.7	0.5
X	74.1	-1.6	74.2	0.0	81.7	-0.1	79.4	0.1	65.6	-1.7
XI	74.7	0.8	74.5	0.5	82.3	0.7	77.0	-3.0	65.8	0.4
XII	73.2	-1.9	73.6	-1.2	81.7	-0.6	71.3	-7.5	64.5	-2.1
<i>Average</i>	<i>74.7</i>		<i>74.2</i>		<i>81.9</i>		<i>78.7</i>		<i>66.0</i>	
2015 I	73.0	-0.3	74.3	1.0	81.3	-0.5	70.5	-1.1	65.8	2.1
II	73.0	0.0	73.9	-0.6	81.4	0.1	69.6	-1.2	65.4	-0.7
III	74.0	1.3	74.6	0.9	81.7	0.4	70.8	1.7	67.3	3.0
IV	73.2	-1.0	73.7	-1.1	81.6	-0.2	71.7	1.2	65.6	-2.6
V	74.3	1.4	74.9	1.6	81.7	0.2	74.4	3.9	67.1	2.3
VI	73.9	-0.5	73.6	-1.8	82.1	0.4	74.7	0.4	65.3	-2.6
VII	70.0	-5.3	71.7	-2.5	79.8	-2.8	66.7	-10.8	62.8	-3.8
VIII	72.7	3.9	73.6	2.7	81.1	1.6	70.3	5.4	66.1	5.1
IX	71.4	-1.8	72.9	-1.0	80.3	-1.0	65.1	-7.4	65.2	-1.3
X	72.0	0.8	73.4	0.8	81.2	1.2	65.8	1.1	65.8	0.9
XI*	70.7	-1.8	72.2	-1.6	78.5	-3.3	65.6	-0.3	65.1	-1.1

* Provisional data

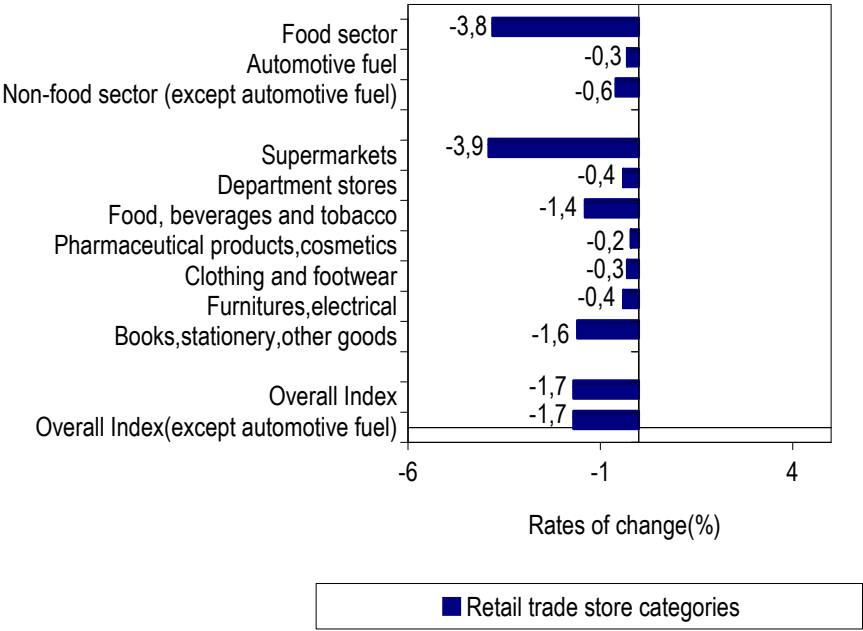
Table 7. Monthly evolution of the seasonally adjusted volume index

Base year: 2010=100.0

Year-month	Overall index		Overall index (except automotive fuel)		Food sector		Automotive fuel sector		Non-food sector (except automotive fuel)	
	Index	Monthly change (%)	Index	Monthly change (%)	Index	Monthly change (%)	Index	Monthly change (%)	Index	Monthly change (%)
2013 I	72.6	-4.7	74.4	-4.0	78.3	-3.0	65.2	-5.9	69.6	-2.8
II	73.0	0.6	75.0	0.7	77.5	-1.0	64.5	-1.0	70.8	1.7
III	74.4	2.0	75.8	1.1	80.1	3.3	68.0	5.5	69.9	-1.3
IV	70.0	-5.9	71.6	-5.6	75.0	-6.3	64.3	-5.5	68.6	-1.9
V	75.7	8.0	76.6	7.0	85.6	14.2	70.8	10.1	70.1	2.2
VI	72.0	-4.8	73.1	-4.5	76.5	-10.6	68.0	-4.0	68.3	-2.6
VII	71.1	-1.2	72.2	-1.3	76.2	-0.4	66.7	-1.9	67.0	-1.9
VIII	71.8	0.9	72.7	0.7	76.5	0.3	68.0	2.1	67.9	1.3
IX	72.6	1.0	73.5	1.0	77.5	1.4	68.9	1.2	68.4	0.7
X	71.7	-1.1	73.0	-0.7	77.3	-0.3	68.0	-1.2	68.7	0.5
XI	73.8	2.8	75.1	2.8	78.1	1.0	68.5	0.8	69.3	0.9
XII	71.9	-2.5	72.7	-3.2	76.5	-2.0	68.9	0.5	68.2	-1.6
<i>Average</i>	<i>72.5</i>		<i>73.8</i>		<i>77.9</i>		<i>67.5</i>		<i>68.9</i>	
2014 I	71.2	-0.9	72.0	-0.9	76.9	0.5	67.7	-1.7	67.6	-0.9
II	71.8	0.8	72.7	0.9	78.0	1.4	67.9	0.3	67.5	-0.1
III	71.7	-0.2	72.2	-0.6	76.7	-1.6	68.3	0.6	66.0	-2.2
IV	73.4	2.4	74.6	3.3	79.2	3.2	68.3	-0.1	69.0	4.5
V	70.5	-3.9	71.6	-4.1	77.1	-2.6	66.0	-3.4	67.3	-2.5
VI	72.7	3.1	73.8	3.2	77.3	0.3	67.8	2.7	69.3	3.0
VII	73.3	0.9	74.4	0.7	78.4	1.4	69.5	2.5	70.2	1.3
VIII	73.3	-0.1	73.8	-0.7	80.1	2.2	70.2	1.1	67.5	-3.9
IX	72.5	-1.0	73.5	-0.4	78.1	-2.5	68.6	-2.3	68.6	1.6
X	72.8	0.3	73.7	0.3	77.7	-0.5	69.5	1.3	68.4	-0.2
XI	72.7	-0.1	73.9	0.2	78.1	0.6	68.7	-1.2	68.1	-0.5
XII	71.4	-1.8	73.3	-0.8	77.7	-0.4	66.6	-3.0	68.2	0.1
<i>Average</i>	<i>72.3</i>		<i>73.3</i>		<i>77.9</i>		<i>68.3</i>		<i>68.1</i>	
2015 I	71.9	0.7	73.7	0.5	77.1	-0.8	68.7	3.2	69.0	1.1
II	71.1	-1.2	72.9	-1.1	77.0	-0.1	67.0	-2.5	68.4	-0.8
III	72.3	1.7	74.0	1.5	77.4	0.5	66.9	-0.1	70.5	3.0
IV	71.8	-0.7	73.2	-1.0	77.3	-0.1	67.5	0.8	68.6	-2.7
V	72.9	1.6	74.0	1.2	77.6	0.4	69.1	2.4	70.0	2.1
VI	71.9	-1.3	73.1	-1.2	77.9	0.4	69.3	0.4	68.8	-1.7
VII	68.9	-4.2	71.1	-2.8	75.5	-3.1	63.1	-9.0	67.2	-2.4
VIII	71.4	3.5	73.0	2.6	76.9	1.8	67.9	7.5	69.5	3.5
IX	70.3	-1.5	72.4	-0.7	75.6	-1.7	65.0	-4.2	69.2	-0.4
X	70.8	0.7	72.9	0.6	76.7	1.4	66.0	1.6	69.4	0.2
XI*	69.6	-1.7	71.6	-1.7	73.7	-3.8	65.8	-0.3	69.0	-0.6

*Provisional data

Graph 6. Monthly rates of change (%) of the seasonally adjusted volume index in retail trade, between November 2015 and October 2015.



METHODOLOGICAL NOTES

Generally	The Retail Trade Turnover Index with the current form is being released since January 2005. The Retail Trade Turnover Index is a continuation of the Retail Sales Value Index, which had been compiled during the period 1963 to 2004.
Purpose of the index – definitions	The purpose of the Retail Trade Turnover Index is to depict the evolution of the goods and services market. Turnover comprises the total amounts invoiced by the enterprise during the reference period which correspond to the resale of goods without any further transformation. The data collected each month refers to the actual sales (both retail and wholesale) excluding VAT but including other duties and taxes on the goods.
Legal basis	The compilation of the Retail Trade Turnover Index is governed by Council Regulation (EC) No.1165/98 of 19 May 1998 concerning short-term statistics and by Regulation (EC) No.1893/2006 of the European Parliament and of the Council of 20 December 2006 establishing the statistical classification of economic activities NACE Revision 2.
Reference period	Month
Base year	2010=100.0.
Revision	Pursuant to the provisions of the Council Regulation No 1165/98 concerning short-term statistics, the index in question is revised every five (5) years, in years ending in 0 or 5. The purpose of revising the Retail Trade Turnover Index is to adapt the index to the changes in the structure of retail trade.
Statistical classification	The NACE Rev.2 statistical classification of economic activities is used in conformity with the Regulation (EC) No 1893/2006 of the European Parliament and of the Council.
Geographical coverage	The index covers the Whole Country with data coming from 61 Regional Units.
Coverage of economic activities	The index covers the division 47 of NACE Rev 2 statistical classification of economic activities.
Statistical survey	In the framework of the survey carried out for the compilation of the Retail Trade Turnover Index (2010=100.0) it was decided to include 41,801 retail trade enterprises listed in the Business Register of ELSTAT having an annual turnover (in 2010) equal to or higher than 200.000 euro. Out of these enterprises a random sample of 1,607 enterprises was selected.
Volume Index	Since 2005 onwards the Retail Trade Volume Index is also being compiled aiming at measuring changes in the volume of retail trade.
Calculating the indices	The turnover index is calculated by the chaining method. First the moving based index is calculated by comparing the estimated turnover value for the current month with the corresponding value of the previous month. Afterwards the fixed base index for the current month is calculated by multiplying the moving-based index by the fixed base index of the previous month. The indices are reduced to a typical month of equal duration. To this end the turnover estimates are multiplied by a suitable correction factor that is calculated by dividing the mean monthly number of working days in the given year by the number of the regular working days in the month under consideration. The Retail Trade Volume Index is calculated by deflating the Retail Trade Turnover Index using the Consumer Price Index (CPI) as deflator.
Seasonal Adjustment	Seasonal adjustment is the procedure followed to remove the impact of seasonality on the time series in order to improve the comparability over time. The method used is the TRAMO-SEAT method with the use of JDemetra+ 2.0.0. The whole series with seasonally adjusted indices is <i>recalculated</i> every time a <i>new</i> observation is added in time series.
Compiled index series	Since the revision of the Retail Trade Turnover and Volume Indices due to the implementation of the classification NACE Rev 2, parallel time series for the indices including and not including fuels are provided. In addition, seasonally adjusted time series data are compiled.
Publication of data	The time series of Retail Trade Turnover and Volume Indices (2010=100.0) which include fuel have being published since 2000 by categories of aggregated economic activity classes*.
References	More information on the methodology concerning the compilation and calculation of the index and for the time series is available on the ELSTAT website http://www.statistics.gr/en/home

*Categories of aggregated economic activity classes in the Turnover Index:

Super-markets

Non-specialised stores with food, beverages or tobacco predominating

Department stores

Other retail sale in non-specialised stores

Food-beverages-tobacco

Fruit and vegetables, meat products, fishes, crustaceans and molluscs, bread, cakes, flour confectionery and sugar confectionery, beverages, tobacco products, other retail sale of food in specialised stores

Automotive fuel

Automotive fuel in specialised stores

Pharmaceutical products, Cosmetics

Dispensing chemist, medical and orthopaedic goods, cosmetic and toilet articles in specialised stores

Clothing and footwear

Textiles, clothing, footwear and leather goods in specialised stores

Furniture, electrical equipment, household equipment

Furniture, lighting equipment, audio and video equipment, hardware, paints and glass, electrical household appliances and other household articles, music and video recordings in specialised stores

Books, stationery and other goods

Books, newspapers and stationery, computers, peripheral units and software, telecommunications equipment, carpets, rugs, wall and floor coverings, sporting equipment, games and toys, flowers, plants, seeds, fertilisers, pet animals and pet food, watches and jewellery, other retail sale of new goods in specialised stores

Retail sale not in stores

Retail sale via mail order houses, via Internet, via stalls and markets of other goods and other retail sale not in stores, stalls or markets