



PRESS RELEASE

REGIONAL ACCOUNTS: Gross Value Added data for the year 2013 and revised data for the years 2000-2012

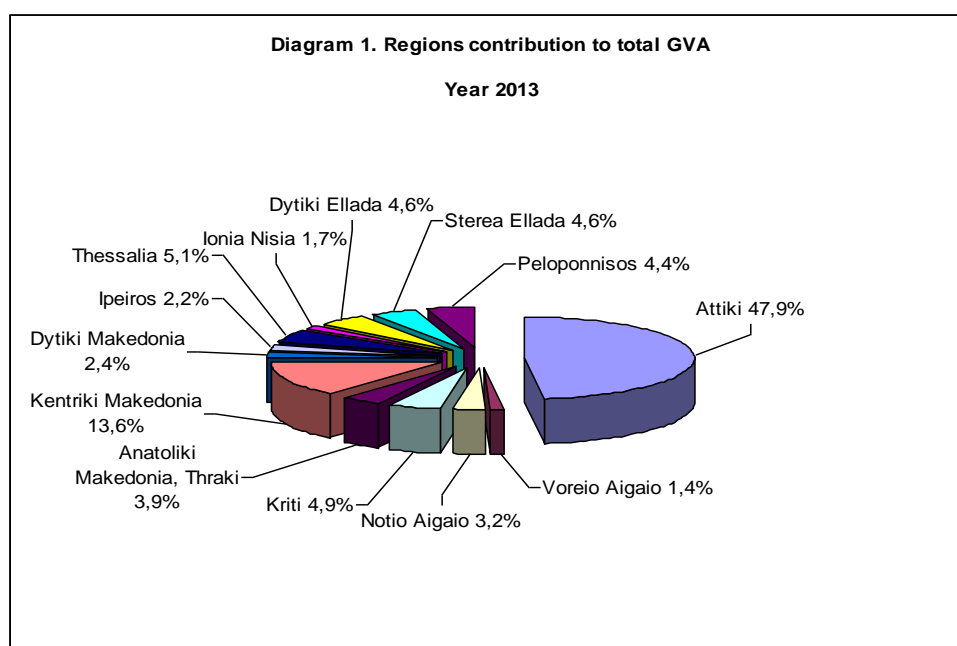
The Hellenic Statistical Authority (ELSTAT) announces the National Accounts results on the level of Region (NUTS II), regarding Gross Value Added for the year 2013, as well as the corresponding revised data for the years 2000 – 2012 according to Commission Regulation (EU) No 1319/2013 concerning the new classification of territorial units for statistics (NUTS). Data are compiled according to the European System of Accounts ESA2010 and are consistent with the respective annual national figures.

For the entire country, Gross Value Added (GVA) in 2013 decreased by 5.3% (Table 1). The biggest decrease occurred in the regions of Anatoliki Makedonia-Thraki, Dytiki Makedonia and Dytiki Ellada.

Table 1.Total Gross Value Added per Region (NUTS II)
(At current prices. In million €)

Regions(NUTS II)	Years		
	2012*	2013*	Change(%)
ELLADA	168.979	159.983	-5,3%
Attiki	81.899	76.687	-6,4%
Voreio Aigaio	2.367	2.274	-3,9%
Notio Aigaio	5.373	5.172	-3,7%
Kriti	7.817	7.832	0,2%
Anatoliki Makedonia, Thraki	6.698	6.220	-7,1%
Kentriki Makedonia	22.807	21.687	-4,9%
Dytiki Makedonia	4.175	3.887	-6,9%
Ipeiros	3.701	3.516	-5,0%
Thessalia	8.411	8.234	-2,1%
Ionia Nisia	2.881	2.709	-6,0%
Dytiki Ellada	7.916	7.377	-6,8%
Stereia Ellada	7.625	7.375	-3,3%
Peloponnisos	7.309	7.015	-4,0%
<i>*Provisional data</i>			

Regarding the participation of regions in the production of GVA, the biggest share is held by the region of Attiki with 47.9%; the region of Kentriki Makedonia follows with 13.6% (Diagram 1).



On the basis of the regional GVA allocation and population statistics data (mid-year estimated population), the per capita regional Gross Domestic Product (GDP) is compiled. Its analysis shows a decrease of 5.0% for the entire country between 2012 and 2013 (Table 2). The regions with the largest decrease are Anatoliki Makedonia & Thraki, Dytiki Ellada and Dytiki Makedonia.

Table 2. Per capita Gross Domestic Product per Region (NUTS II)
(At current prices. In euros)

Regions (NUTS II)	Years		
	2012*	2013*	Change (%)
ELLADA	17.311	16.451	-5,0%
Attiki	23.530	22.238	-5,5%
Voreio Aigaio	13.389	12.881	-3,8%
Notio Aigaio	18.163	17.422	-4,1%
Kriti	14.046	14.007	-0,3%
Anatoliki Makedonia, Thraki	12.403	11.513	-7,2%
Kentriki Makedonia	13.458	12.816	-4,8%
Dytiki Makedonia	16.711	15.652	-6,3%
Ipeiros	12.162	11.590	-4,7%
Thessalia	12.796	12.552	-1,9%
Ionia Nisia	15.621	14.686	-6,0%
Dytiki Ellada	13.070	12.229	-6,4%
Stereia Ellada	15.383	14.858	-3,4%
Peloponnisos	14.066	13.497	-4,0%

* Provisional data. Revised estimated population in the middle of the year 2013 based on 2011 census data

Table 3 presents the allocation of regional GVA by industry (Nace Rev.2 / A10) for the year 2013.

Table 3. Gross Value Added per Industry (A10)* and Region (NUTS II). Year 2013
(Provisional data. At current prices. In million €)

Regions (NUTSII)	Industries									
	A	B, C, D, E	F	G, H, I	J	K	L	M, N	O, P, Q	R, S, T, U
ELLADA	5.964	21.431	4.757	37.038	5.132	7.707	29.902	8.195	33.167	6.690
Attiki	323	7.792	1.803	17.076	3.805	5.220	17.121	5.779	14.679	3.088
Voreio Aigaio	122	156	98	543	39	66	402	52	708	87
Notio Aigaio	143	318	227	2.412	49	145	770	128	797	183
Kriti	448	734	315	2.560	141	268	1.130	358	1.486	394
Anatoliki Makedonia, Thraki	471	969	190	1.229	92	176	833	132	1.910	217
Kentriki Makedonia	1.273	3.183	618	4.946	448	791	3.344	867	5.178	1.040
Dytiki Makedonia	230	1.751	145	415	38	90	376	75	671	96
Ipeiros	263	397	169	762	49	98	602	90	949	137
Thessalia	812	1.246	331	1.583	85	208	1.220	184	2.197	368
Ionia Nisia	100	117	125	1.135	29	69	499	74	420	140
Dytiki Ellada	676	898	258	1.534	177	231	1.303	208	1.742	350
Stereia Ellada	561	2.440	213	1.449	75	158	986	128	1.130	234
Peloponnisos	541	1.430	265	1.394	105	188	1.316	121	1.299	358

The description of the industries of the A10 classification of Nace Rev. 2 is:

A	A	Agriculture, forestry and fishing
B, C, D, E	B	Mining and quarrying
	C	Manufacturing
	D	Electricity, gas, steam and air conditioning supply
	E	Water supply; sewerage, waste management and remediation activities
F	F	Construction
G, H, I	G	Wholesale and retail trade; repair of motor vehicles and motorcycles
	H	Transportation and storage
	I	Accommodation and food service activities
J	J	Information and communication
K	K	Financial and insurance activities
L	L	Real estate activities
M, N	M	Professional, scientific and technical activities
	N	Administrative and support service activities
O, P, Q	O	Public administration and defence; compulsory social security
	P	Education
	Q	Human health and social work activities
R, S, T, U	R	Arts, entertainment and recreation
	S	Other service activities
	T	Activities of households as employers; undifferentiated goods and services-producing activities of households for own use
	U	Activities of extraterritorial organisations and bodies

Table 4 below presents the revised data of regional GVA and its allocation, for the years 2000-2012, according to new NUTS 2013 classification.

Table.4 Total gross value added for the years 2000-2012 and regional allocation NUTS II

Total gross value added

Nuts II	Years	2000	2001	2002	2003	2004	2005	2006	2007	2008	2009	2010	2011*	2012*
ELLADA		126.181	135.470	145.797	160.513	174.773	178.821	193.047	205.267	213.819	212.391	199.644	181.909	168.979
Attiki		57.295	61.372	67.267	74.014	81.934	84.400	92.450	98.806	103.129	103.722	97.566	88.720	81.899
Voreio Aigaio		1.695	1.808	1.888	2.234	2.380	2.511	2.694	2.915	3.104	3.036	2.813	2.587	2.367
Notio Aigaio		4.289	4.514	4.601	5.189	5.683	5.979	6.360	6.778	7.230	6.795	6.391	5.802	5.373
Kriti		6.163	6.721	7.207	7.896	8.732	8.856	9.475	9.880	10.433	10.291	9.592	8.537	7.817
Anatoliki Makedonia, Thraki		5.252	5.590	5.963	6.465	6.866	7.061	7.214	7.856	8.350	8.321	8.124	7.161	6.698
Kentriki Makedonia		17.712	19.142	20.160	21.994	24.084	24.134	26.184	28.185	29.427	29.005	26.805	24.683	22.807
Dytiki Makedonia		2.900	3.145	3.473	3.880	4.119	4.272	4.365	4.392	4.243	4.505	4.399	4.234	4.175
Ipeiros		3.033	3.239	3.538	3.861	3.990	4.051	4.243	4.436	4.557	4.493	4.355	4.052	3.701
Thessalia		6.662	7.195	7.743	8.867	9.380	9.181	9.936	10.367	10.768	10.564	9.570	8.746	8.411
Ionia Nisia		2.399	2.615	2.654	3.051	3.256	3.401	3.571	3.780	3.996	3.756	3.526	3.057	2.881
Dytiki Ellada		6.153	6.604	7.189	7.870	8.547	8.728	9.506	9.918	10.042	9.737	9.426	8.444	7.916
Stereia Ellada		6.920	7.373	7.600	8.211	8.467	8.740	8.963	9.317	9.613	9.304	8.747	8.148	7.625
Peloponnisos		5.709	6.152	6.515	6.981	7.334	7.507	8.084	8.636	8.926	8.863	8.329	7.738	7.309

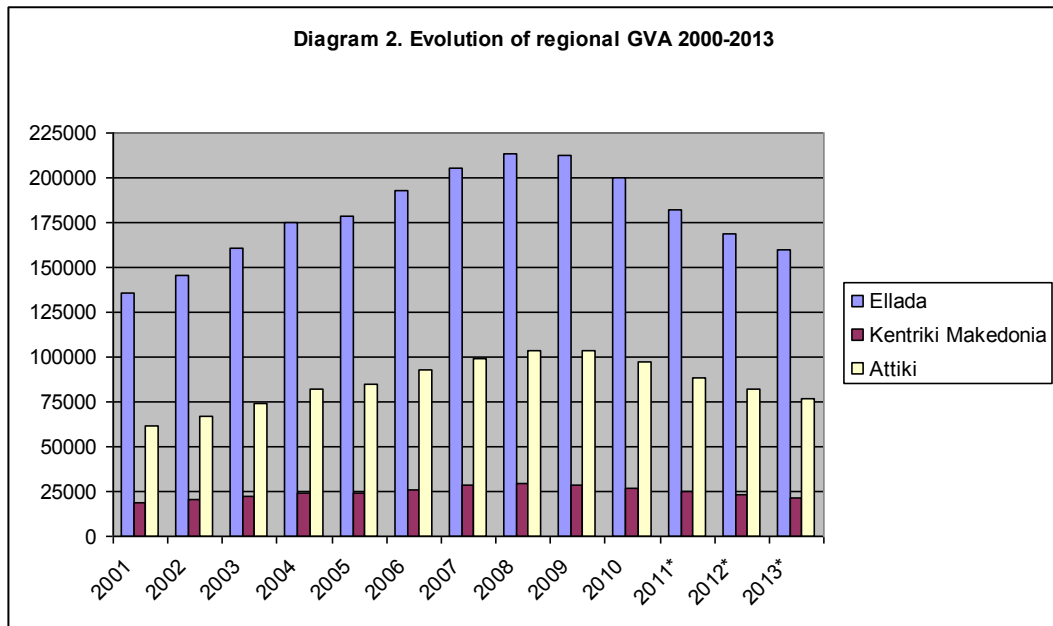
*Provisional data.

Gross value added Regional allocation

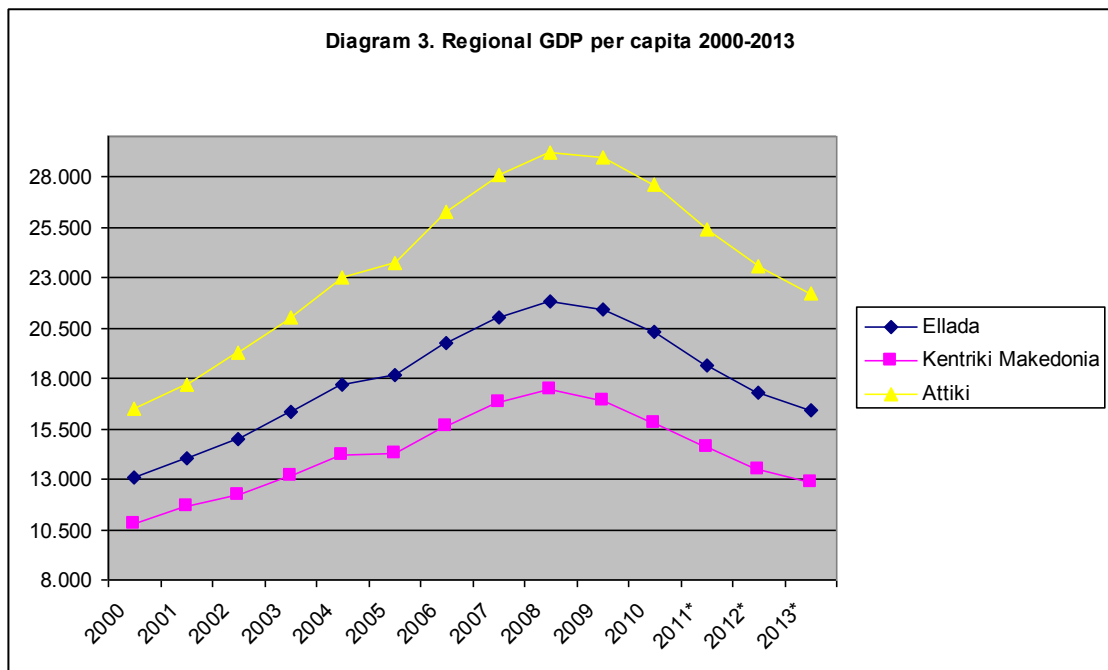
Nuts II	Years	2000	2001	2002	2003	2004	2005	2006	2007	2008	2009	2010	2011*	2012*
ELLADA		100,0%	100,0%	100,0%	100,0%	100,0%	100,0%	100,0%	100,0%	100,0%	100,0%	100,0%	100,0%	100,0%
Attiki		45,4%	45,3%	46,1%	46,1%	46,9%	47,2%	47,9%	48,1%	48,2%	48,8%	48,9%	48,8%	48,5%
Voreio Aigaio		1,3%	1,3%	1,3%	1,4%	1,4%	1,4%	1,4%	1,4%	1,5%	1,4%	1,4%	1,4%	1,4%
Notio Aigaio		3,4%	3,3%	3,2%	3,2%	3,3%	3,3%	3,3%	3,3%	3,4%	3,2%	3,2%	3,2%	3,2%
Kriti		4,9%	5,0%	4,9%	4,9%	5,0%	5,0%	4,9%	4,8%	4,9%	4,8%	4,8%	4,7%	4,6%
Anatoliki Makedonia, Thraki		4,2%	4,1%	4,1%	4,0%	3,9%	3,9%	3,7%	3,8%	3,9%	3,9%	4,1%	3,9%	4,0%
Kentriki Makedonia		14,0%	14,1%	13,8%	13,7%	13,8%	13,5%	13,6%	13,7%	13,8%	13,7%	13,4%	13,6%	13,5%
Dytiki Makedonia		2,3%	2,3%	2,4%	2,4%	2,4%	2,4%	2,3%	2,1%	2,0%	2,1%	2,2%	2,3%	2,5%
Ipeiros		2,4%	2,4%	2,4%	2,4%	2,3%	2,3%	2,2%	2,2%	2,1%	2,1%	2,2%	2,2%	2,2%
Thessalia		5,3%	5,3%	5,3%	5,5%	5,4%	5,1%	5,1%	5,1%	5,0%	5,0%	4,8%	4,8%	5,0%
Ionia Nisia		1,9%	1,9%	1,8%	1,9%	1,9%	1,9%	1,8%	1,8%	1,9%	1,8%	1,8%	1,7%	1,7%
Dytiki Ellada		4,9%	4,9%	4,9%	4,9%	4,9%	4,9%	4,9%	4,8%	4,7%	4,6%	4,7%	4,6%	4,7%
Stereia Ellada		5,5%	5,4%	5,2%	5,1%	4,8%	4,9%	4,6%	4,5%	4,5%	4,4%	4,4%	4,5%	4,5%
Peloponnisos		4,5%	4,5%	4,5%	4,3%	4,2%	4,2%	4,2%	4,2%	4,2%	4,2%	4,2%	4,3%	4,3%

*Provisional data.

In Diagrams 2 and 3 it is presented the evolution of regional GVA and regional per capita GDP for Total Greece and for the 2 greater regions (Attiki, Kentriki Makedonia)



*Provisional data



*Provisional data

Analytical tables of Regional Accounts are available on ELSTAT portal at the following links:

[http://www.statistics.gr/en/statistics/-/publication/SEL45/-](http://www.statistics.gr/en/statistics/-/publication/SEL45/)

[http://www.statistics.gr/en/statistics/-/publication/SEL48/-](http://www.statistics.gr/en/statistics/-/publication/SEL48/)

[http://www.statistics.gr/en/statistics/-/publication/SEL51/-](http://www.statistics.gr/en/statistics/-/publication/SEL51/)

[http://www.statistics.gr/en/statistics/-/publication/SEL54/-](http://www.statistics.gr/en/statistics/-/publication/SEL54/)

[http://www.statistics.gr/en/statistics/-/publication/SEL57/-](http://www.statistics.gr/en/statistics/-/publication/SEL57/)

[http://www.statistics.gr/en/statistics/-/publication/SEL60/-](http://www.statistics.gr/en/statistics/-/publication/SEL60/)

Information:

National Accounts Division
Quarterly, Regional and Satellite Accounts Section

Andriana Dafni 213 135 2084 a.dafni@statistics.gr

Sofia Michailidou 213 135 2824 s.michailidou@statistics.gr

Fax : 213 135 2552