



PRESS RELEASE

Issuing of Motor Vehicle Circulation Licences: December 2015

The Hellenic Statistical Authority announces that in December 2015, 9.488 road motor cars (both new and used from abroad) were put into circulation for the first time, recording a 7,0% increase compared with the corresponding month of 2014 when the number of road motor cars was 8.867. In December 2014, a 69,3% increase had been observed in comparison with the corresponding month of 2013 (Table1, Chart1). A total number of 7.451 new cars were put into circulation in December 2015 compared with 7.094 in December 2014, recording an 5,0% increase.

The new motorcycles (over 50cc) that were put into circulation for the first time in December 2015 amounted to 3.332, against 934 in 2014, thus recording a 256,67% increase. In December 2014, a 24,4% increase had been observed in comparison with the corresponding month of 2013 (Table 1, Chart1). Out of the above motorcycles 3.234 were new, while the corresponding figure in December 2014 was 863, recording a 274,7% increase.

During the period January - December 2015, 116.168 road motor cars (both new and used from abroad) were put into circulation for the first time, representing a 13,5% increase compared to the corresponding period of 2014 when the number of road motor cars was 102.359. During the period January - December 2014 an increase of 30,2% had been observed in comparison with the corresponding period of 2013 (Table2, Charts 2,3). Out of the above number of road motor cars that were put into circulation, from January to December 2015, 81.471 were new, while the corresponding number during the respective period of 2014 was 76.132, recording a 7,0% increase.

During the period January - December 2015 the circulation of new motorcycles (over 50cc) amounted to 36.607, against 33.578 in 2014, thus representing a 9,0% increase. An increase of 9,2% had been observed during the period January - December 2014 in comparison with the corresponding period of 2013 (Table 2, Charts 2,3). A total number of 34.485 new motorcycles were put into circulation, from January to December 2015, compared with 31.922 during the corresponding period of 2014, recording a 8,0% increase.

Information:

Division of Statistics on Trade and Services
Section of Transport, Communications and Mass Media

Konstantinos Menexes

Telephon : (0030) 213 1352500

FAX : (0030) 213 1352496

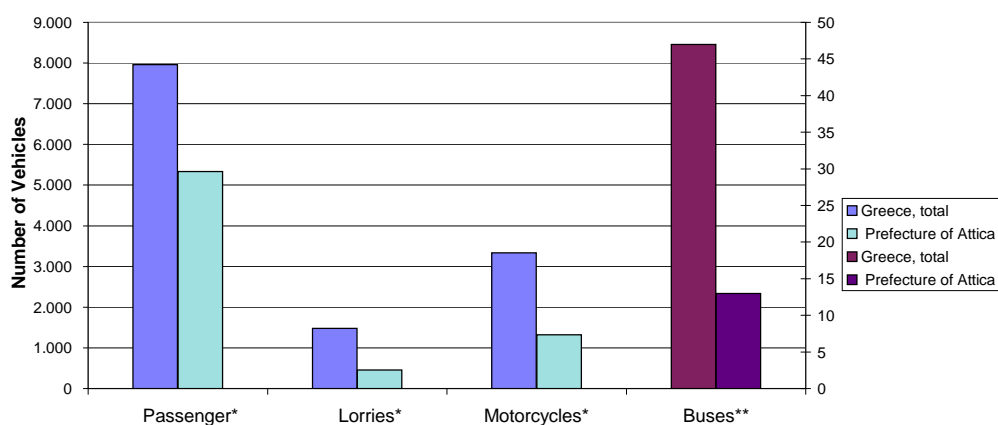
e-mail : k.menexes@statistics.gr

**Table 1. Road motor vehicles, both new and used, put into circulation for the first time in Greece:
December 2013 - 2015**

Category of Road Motor Vehicles	December						Change (%)			
	2015		2014		2013		2015/2014		2014/2013	
	Total	Used	Total	Used	Total	Used	Total	Used	Total	Used
Greece, total										
Road Motor Vehicles, total	12.820	2.135	9.801	1.844	5.988	755	30,8	15,8	63,7	144,2
1. Road motor cars	9.488	2.037	8.867	1.773	5.237	733	7,0	14,9	69,3	141,9
Passenger Cars	7.960	1.148	7.303	920	4.512	264	9,0	24,8	61,9	248,5
Buses	47	39	61	55	32	25	-23,0	-29,1	90,6	120,0
Lorries	1.481	850	1.503	798	693	444	-1,5	6,5	116,9	79,7
2. Motorcycles > 50 cc	3.332	98	934	71	751	22	256,7	38,0	24,4	222,7
Prefecture of Attica										
Road Motor Vehicles, total	7.127	738	6.078	591	3.836	241	17,3	24,9	58,4	145,2
1. Road motor cars	5.805	721	5.548	573	3.390	235	4,6	25,8	63,7	143,8
Passenger Cars	5.335	529	4.897	381	3.175	121	8,9	38,8	54,2	214,9
Buses	13	9	29	27	6	5	-55,2	-66,7	383,3	440,0
Lorries	457	183	622	165	209	109	-26,5	10,9	197,6	51,4
2. Motorcycles > 50 cc	1.322	17	530	18	446	6	149,4	-5,6	18,8	200,0

Category of Road Motor Vehicles	Change (%)					
	Average Jan. 2015 - Dec. 2015		Average Jan. 2014 - Dec. 2014		Average Jan. 2015 - Dec. 2015 / Average Jan. 2014 - Dec. 2014	
	Total	Used	Total	Used	Total	Used
Greece, total						
Road Motor Vehicles, total	12.732	3.069	11.328	2.323	12,4	32,1
1. Road motor cars	9.681	2.892	8.530	2.185	13,5	32,4
Passenger Cars	8.013	1.721	7.037	1.136	13,9	51,5
Buses	56	46	68	54	-17,6	-14,8
Lorries	1.612	1.125	1.425	995	13,1	13,1
2. Motorcycles > 50 cc	3.051	177	2.798	138	9,0	28,3

Graph 1. New registrations of motor vehicles: December 2015



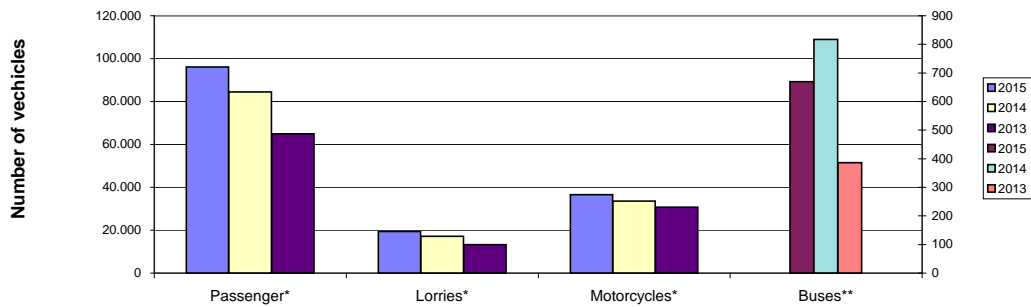
* For Passenger motor vehicles, Lorries and Motorcycles see the left axis scale

** For Buses see the right axis scale

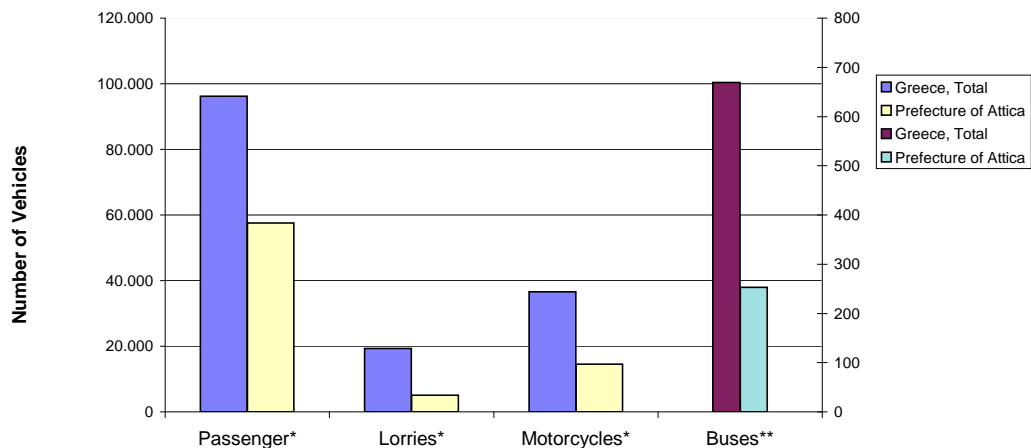
**Table 2. Road motor vehicles, both new and used, put into circulation for the first time in Greece:
Jan. - Dec. 2013 - 2015**

Category of Road Motor Vehicles	January - December						Change (%)			
	2015		2014		2013		2015/2014		2014/2013	
	Total	Used	Total	Used	Total	Used	Total	Used	Total	Used
Greece, total										
Road Motor Vehicles, total	152.775	36.819	135.937	27.883	109.372	17.420	12,4	32,0	24,3	60,1
1. Road motor cars	116.168	34.697	102.359	26.227	78.630	16.176	13,5	32,3	30,2	62,1
Passenger Cars	96.151	20.654	84.445	13.635	64.932	6.273	13,9	51,5	30,1	117,4
Buses	669	546	817	649	386	289	-18,1	-15,9	111,7	124,6
Lorries	19.348	13.497	17.097	11.943	13.312	9.614	13,2	13,0	28,4	24,2
2. Motorcycles > 50 cc	36.607	2.122	33.578	1.656	30.742	1.244	9,0	28,1	9,2	33,1
Prefecture of Attica										
Road Motor Vehicles, total	77.526	10.081	69.540	7.085	56.117	3.754	11,5	42,3	23,9	88,7
1. Road motor cars	62.946	9.741	55.904	6.805	43.239	3.533	12,6	43,1	29,3	92,6
Passenger Cars	57.574	7.271	50.859	4.510	40.027	2.005	13,2	61,2	27,1	124,9
Buses	253	195	317	226	128	88	-20,2	-13,7	147,7	156,8
Lorries	5.119	2.275	4.728	2.069	3.084	1.440	8,3	10,0	53,3	43,7
2. Motorcycles > 50 cc	14.580	340	13.636	280	12.878	221	6,9	21,4	5,9	26,7

**Graph 2. New motor vehicle circulation licences: comparative data
January - December 2013, 2014, 2015**



Graph 3. New registrations of motor vehicles: January - December 2015



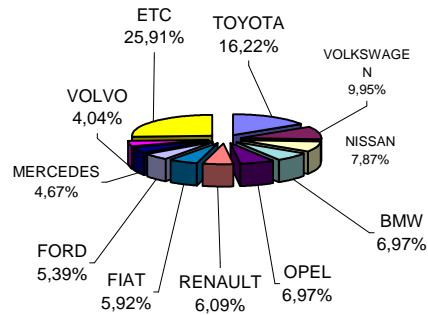
* For Passenger motor vehicles, Lorries and Motorcycles see the left axis scale

** For the Buses see the right axis scale

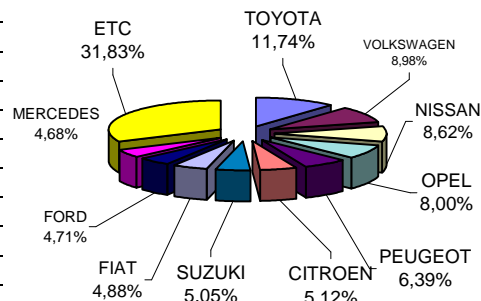
**Table 3. Sales of new and used passenger cars by make:
December and January - December 2015**

Makes	Passenger cars			
	December		Jan. - Dec.	
	new	used	new	used
ALFA LANCIA	-	-	-	1
ALFA ROMEO	73	15	477	139
AUDI	202	25	2.651	488
AUSTIN-ROVER	-	-	-	1
BENTLEY	-	1	-	2
BMW	475	37	2.988	560
CADILLAC	-	-	-	2
CHEVROLET	-	1	2	21
CHRYSLER	-	1	-	7
CITROEN	259	53	3.866	1.052
DACIA	32	3	319	44
DAEWOO	-	-	1	16
DAIHATSU	-	3	-	61
DETHLEFFS	-	1	-	31
DODGE	-	-	-	1
FERRARI	-	-	-	3
FIAT	403	67	3.683	1.521
FIAT - PINIFARINA	-	-	-	1
FIAT-IVECO	-	-	-	1
FORD	367	113	3.553	1.646
GM KOREA (CHEVROLET)	22	1	466	44
HOBBY	-	-	-	1
HONDA	39	4	539	92
HUMMER	-	-	-	1
HYUNDAI	206	10	3.068	247
JAGUAR	-	-	6	7
JEEP	67	2	627	57
KIA	91	7	1.402	149
KTM	-	-	-	1
LAMBORGHINI	-	-	-	1
LANCIA	4	3	141	65
LAND ROVER	-	7	36	138
LEXUS	11	2	81	34
LEYLAND	-	-	-	2
LOTUS	-	-	-	1
MASERATI	-	-	-	1
MAZDA	-	3	-	115
MERCEDES	318	74	3.533	1.356
MERCEDES Z.MANTOS	2	-	35	1
MG ROVER	-	-	-	1
MIA	-	-	-	1
MINI	160	20	1.292	258
MITSUBISHI	10	5	279	116
NISSAN	536	50	6.509	631
OPEL	475	162	6.036	3.535
PEUGEOT	172	59	4.824	969
PORSCHE	1	3	20	100
RAGE	-	-	-	1
RENAULT	415	57	2.791	834
ROVER	-	-	-	5
SAAB	-	-	-	8
SEA / MOBILVETT	-	-	-	11
SEAT	96	7	1.623	127
SH AUTO	-	-	1	-
SKODA	119	25	2.238	337
SMART	31	88	736	1.280
SSANGYONG	4	-	22	-
SUBARU	2	1	41	19
SUZUKI	162	21	3.815	604
TALBOT	-	-	-	1
THINK	-	-	-	1
TOYOTA	1.105	147	8.867	2.494
TRIUMPH	-	-	-	1
VOLKSWAGEN	678	57	6.781	1.227
VOLVO	275	13	2.148	182
TOTAL	6.812	1.148	75.497	20.654

**Graph 4. Sales of new passenger cars:
December 2015**



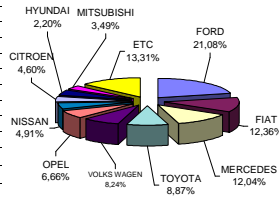
**Graph 5. Sales of new passenger cars:
January - December 2015**



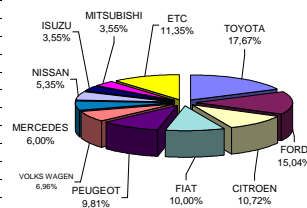
**Table 4. Sales of new and used lorries by make:
December and January - December 2015**

Makes	Lorries			
	December		Jan. - Dec.	
	new	used	new	used
ASTRA	-	-	-	2
BERLIET	-	-	-	1
BMW	-	-	-	1
CHEVROLET	-	-	-	3
CHRYSLER	-	-	-	2
CITROEN	29	25	627	341
CITROEN SMYRLIADIS	-	-	2	-
CITROEN STATHIS	-	-	1	-
CONTRUCK MECHANICA	3	-	4	-
DACIA	-	-	-	23
DAF	1	16	13	236
DAF A. KAOUSSIS SA	-	-	3	-
DAF DYNA TRAILERS S.A	6	-	7	-
DAF SMYRLIADIS	-	-	1	-
DAF TOUMBAS D. & Co L	8	-	8	-
DAF ΗΦΑΙΣΤΟΣ ΣΤΕΦΑΝ	-	-	6	-
DAIHATSU	-	2	-	6
DENNIS EAGLE	-	-	1	-
DODGE	-	1	-	7
FIAT	78	104	585	1,619
FIAT-IVECO	-	-	-	66
FORD	133	102	880	1,517
FORD AVF HELLAS	1	-	1	-
FORD STATHIS	-	-	1	-
G.M.C.	-	-	-	2
GENERAL MOTORS	-	-	-	1
HONDA	-	-	-	1
HYUNDAI	-	4	-	54
ISUZU	18	12	208	174
IVECO	3	6	20	120
IVECO A. KAOUSSIS SA	1	-	31	-
IVECO KOSKERIDIS	1	-	4	-
IVECO STATHIS	-	-	2	-
IVECO ΗΦΑΙΣΤΟΣ ΣΤΕΦΑ	2	-	15	-
IVECO ΟΡΦΑΝΙΑΣ Θ. ΝΙ	-	-	2	-
IVECO MAGIRUS	-	-	1	11
IVECO MAGIRUS ΣΦΑΝΤ	-	-	3	-
JEEP	-	-	-	2
KIA	-	-	-	8
KOSKERIDIS	-	-	1	-
LAND ROVER	-	2	-	5
LLOYD	-	1	-	2
MAFI	-	-	1	-
MAGIRUS	-	-	-	1
MAHINDRA	1	-	13	1
MAN	2	23	12	507
MAN A. KAOUSSIS SA	-	-	38	-
MAN NIKAS	-	-	1	-
MAN ΕΥΣΤΑΘΙΟΣ ΖΥΓΟΥ	-	-	2	-
MAN ΤΑΞΙΑΡΧΟΥ	-	-	4	-
MAN ΤΣΙΤΣΟΠΟΥΛΟΣ ΘΕ	-	-	1	-
MAZDA	-	28	-	370
MEILLER	4	-	6	-
MERCEDES	76	144	351	2,441
MERCEDES A. KAOUSSIS	20	-	47	1
MERCEDES DYNA TRAIL	-	-	2	-
MERCEDES GENNADIOS	-	-	1	-
MERCEDES KOSKERIDIS	-	-	1	-
MERCEDES NIKAS	-	-	5	-
MERCEDES SMYRLIADIS	-	-	12	-
MERCEDES STATHIS	-	-	10	-
MERCEDES Α&Ι ΔΕΡΒΙΣΗ	-	-	-	2
MERCEDES ΔΙΚΤΥΟ ΦΟΡ	-	-	5	-
MERCEDES ΘΕΟΧΑΡΗΣ Ν	-	-	1	-
MERCEDES ΚΑΞΕΚΟ Ο Ε	1	-	7	-
MERCEDES ΤΑΞΙΑΡΧΟΥ	2	-	7	-
MINIBUS	-	-	-	1
MITSUBISHI	22	48	208	731
MITSUBISHI SMYRLIADIS	-	-	3	-
MITSUBISHI ΕΥΣΤΑΘΙΟΣ	-	-	1	-
MITSUBISHI Σ.ΜΑΡΚΕΤΟΣ	-	-	1	-
MOSCHOU CRANE	-	-	1	-
MULTICAR	-	-	-	1
NISSAN	31	111	313	1,364
NISSAN A. KAOUSSIS SA	-	-	1	-
NISSAN SMYRLIADIS	-	-	5	1
OAF	-	-	-	1
OPEL	42	46	207	760
OPEL STATHIS	-	-	1	-
OZETA CLES	-	-	-	1
PEUGEOT	28	14	574	264
PFAU	-	-	-	3
PFAU MERCEDES	-	-	-	1
PIAGGIO	-	1	28	19
PIAGGIO TOUMBAS D. &	1	-	1	-
PIAGGIO & C SPA A. KAO	-	-	5	-
RAUSCH GMBH & C	-	-	1	-
RENAULT	4	57	52	771
ROMANITAL S.R.L	-	-	-	1
ROVER	-	2	-	5
SAMSUNG	-	-	-	1
SCANIA	2	12	24	306
SCANIA A. KAOUSSIS SA	-	-	1	-
SCANIA KARKAGGELHS	-	-	1	-
SCANIA SMYRLIADIS	-	-	2	-
SCANIA ΕΥΣΤΑΘΙΟΣ ΖΥΓ	-	-	1	-
SEAT	-	2	6	17
SKODA	-	6	-	148
SOVAB	-	-	-	1
SSANGYONG	2	-	4	3
STEYER	-	-	-	3
SUZUKI	-	-	-	9
TATA	-	1	-	3
TERBERG	-	-	-	20
TOYOTA	56	21	1,034	447
VAUXHALL	-	-	-	1
VOLKS WAGEN	52	39	407	701
VOLKS WAGEN ΘΕΟΧΑΡΗ	-	-	1	-
VOLVO	1	20	13	387
VOLVO ΕΥΣΤΑΘΙΟΣ ΖΥΓ	-	-	1	-
TOTAL	631	850	5,851	13,497

**Graph 6. Sales of new lorries:
December 2015**



**Graph 7. Sales of new lorries:
January - December 2015**



**Table 5. Sales of new and used buses by make:
December and January - December 2015**

Makes	Buses			
	December		Jan. - Dec.	
	new	used	new	used
BOVA	-	2	-	34
CITROEN	-	-	-	1
DAF	-	-	-	2
EOS-COACH	-	-	-	1
EVOBUS	-	3	-	41
FIAT	-	-	-	4
FIAT-IVECO	-	2	-	5
FORD	-	-	2	15
G. AUWARTER	-	-	-	3
HIGER (SCANIA)	-	-	6	1
IRISBUS	-	-	-	2
IRIZAR	-	-	-	1
ISUZU	2	-	2	-
IVECO	2	3	13	11
KASSBOHRER	-	-	-	1
MAN	2	4	3	32
MERCEDES	1	10	20	198
MERCEDES CENTO BUS	-	-	1	-
MERCEDES ERDUMAN	-	-	21	-
MERCEDES NIKAS	-	-	16	-
MERCEDES PAPADAKIS	-	-	19	-
MERCUS	-	-	1	-
NEOPLAN	-	2	-	34
OPEL	-	-	7	-
OTOKAR	-	-	1	-
RENAULT	-	-	-	1
SALVADOR CAETAN	-	-	-	1
SCANIA	-	2	1	36
SETRA	-	2	5	51
SFAKIANAKIS	-	-	1	-
SIN MARCA	-	-	-	1
SOVAB	-	-	-	1
TEMSA	-	2	3	31
VAN HOOL	-	1	-	4
VOLKSWAGEN	-	1	-	13
VOLVO	-	5	-	18
XIAMEN KING LONG	1	-	1	3
TOTAL	8	39	123	546

**Graph 8. Sales of new buses:
January - December 2015**

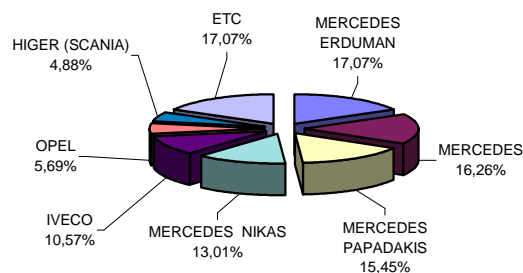
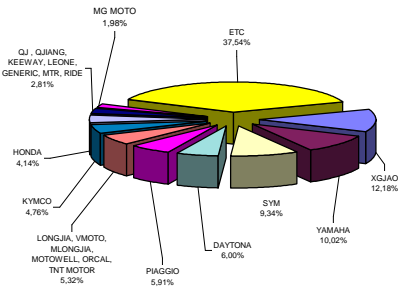


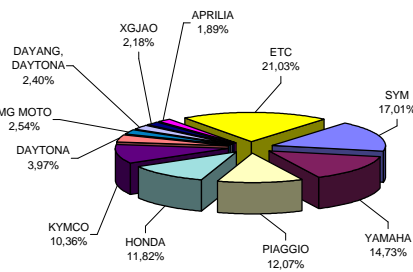
Table 6. Sales of new and used motorcycles by make or manufacturer: December and January - December 2015

Makes	Motorcycles			
	December		Jan. - Dec.	
	new	used	new	used
ACCESS, GOES	15	-	59	-
AEON MOTOR	3	-	61	-
APRILIA	19	1	653	62
APRILIA, PIAGGIO, GILERA	-	-	41	-
ARTIC CAT, MASSE	2	-	33	-
BASHAN, MONDIAL, YUKI, APAC	22	-	80	1
BETA	2	-	22	-
BMW	24	-	441	43
BOMBARDIER INC.	2	-	21	1
BUYANG, MX	-	-	8	-
C.P.I. MOTOR CO	-	-	16	-
CFMOTO	20	-	103	-
CFMOTO, MONDIAL, DERRACE	1	-	16	-
CHEETA	-	-	21	-
CHONGQING LIFAN	3	-	8	1
DAELIM	12	-	109	3
DAYANG, DAYTONA	57	-	829	9
DAYTONA	194	-	1,370	9
DERBI	19	-	56	1
DUCATI	11	-	159	9
EAGLE MOTORSPORTS	11	-	11	-
FEISHEN, MONDIA	2	-	15	-
GAS GAS	4	-	11	-
GILERA, PIAGGIO	1	-	21	12
GUAGLIANO-MOTO,IMOTO S.A.,	21	-	21	-
HAOJIANG,SENKE,ZONTES,TAY	-	-	34	-
HARLEY DAVIDSON	-	-	112	26
HER CHEE, ADLY	3	-	14	-
HONDA	134	21	4,075	395
HONLING, SHL, RIYA, TRIMAX, V	3	-	36	-
HSUN,HISUN,APACHI,Q-MOTO,JI	1	-	8	-
HUSQVARNA	11	-	55	5
HYOSUNG MOTORS & MACHINE	7	-	9	2
INDIAN MOTORCYC	-	-	13	-
JIAJI,HUATIAN,FEILING,TUTU,EF	4	-	13	-
JIA,JUE,JJINDING,LANYING,PEDA	5	-	25	1
JIANSHE	10	-	59	1
JIANSHE,GEMINI	42	-	82	-
JINLING	4	-	7	4
JLAJI,HUATIAN,FEILING,TUTU,E	29	1	188	1
JONWAY, SHENKE, JMSTAR, HU	9	-	20	-
JOYNER	-	-	35	2
KAISAR	43	1	59	1
KAWASAKI	12	2	219	32
KEEWAY, QJ, QJIANG	5	-	11	1
KENBO	13	-	42	-
KENOS	9	-	20	-
KL	8	-	87	-
KTM	31	3	219	13
KWANG YANG	-	-	-	77
KYMCO	154	6	3,571	164
LIFAN	17	1	102	3
LIFAN,HONLEI,SKYGO,BISAN-LI	36	-	224	1
LIGBEN, HAIZHIMENG, EMEISHA	21	-	30	-
LINGBEN, BINQI,	39	-	39	-
LINGBEN, HAIZHIM	60	-	60	-
LINHAJ, KUBA	9	-	83	-
LINTEX, IVA, WK BIKES, SINOCO	7	-	17	-
LML	7	-	76	3
LONCIN	61	-	104	-
LONCIN, KINLON, DORTON, CCM	28	-	70	-
LONGJIA, VMOTO, MLONGJIA, M	172	-	176	-
LONGJIA,RENBO,PRESTO,GINM	13	-	35	-
MALAGUTI	2	-	8	9
MBK	-	2	5	12
MG MOTO	64	-	876	6
MODENAS	42	-	351	1
MOTO GUZZI	-	-	18	2
MOTO S.P.A	1	-	11	-
MV AGUSTA	-	-	15	-
NIPPONIA	1	-	7	-
ODES, LIANGZI, BRANSON	16	-	66	-
PEUGEOT	15	2	296	14
PGO	2	-	11	-
PIAGGIO	191	11	4,163	373
PIAGGIO,APRILIA	2	-	72	-
POLARIS	2	1	22	2
QINGQI, PIONEER, i-moto, SUPE	2	-	9	3
QJ, QJIANG, KEEWAY, LEONE, I	91	-	433	2
QUADRO	-	-	7	-
ROYAL ENFIELD	-	-	7	-
SHANYANG	3	-	43	-
SHINERAY	22	-	121	2
SHINERAY, KUDAKI, LANVERTT	2	-	7	-
SKYJET	34	1	129	2
SKYTEAM,SASIN, CSR, METALK	25	-	120	1
SOKON	2	-	7	-
STANDARD	2	-	13	1
SUKIDA, RARIRO, KAIER, HAOJI	6	-	11	1
SUZUKI	23	3	419	145
SYM	302	7	5,867	99
TGB	1	-	158	1
TRIUMPH	6	-	157	8
TURBHO	-	-	7	-
WANGYE, SANBEN, UM, MONDIA	4	-	93	-
X-GEARH WONJAN	12	-	13	-
XGJAO	394	-	752	3
XGJAO,KAISAR,SKYJET,SOKON	26	-	126	2
XINGYUE, QSTRONG,CELIK, GS	22	-	33	1
XINLING, HEROWAY, LEDOW, D	-	-	16	-
YAMAHA	324	30	5,078	497
YIBEN,MEIDUO,VONROAD,WUB	1	-	20	-
YINGANG	-	-	63	-
YINGANG, MOTORAN, DAYTONA	1	-	25	-
YINXIANG,KENBO,CHEETA,FEK	17	-	72	1
YUAN, CELIK, RAMZEY, CASA, T	4	-	7	-
ZHENHUA,CC,Spigaou,KOONO	8	-	9	-
ZHONGNENG, ZNEN, daDo, DIRE	22	-	244	8
ZONGSHEN, ZIPSTAR, ZEALSUN	24	1	62	1
ZXMC0,ZHONGXING,BEWHEEL	8	-	47	1
ETC	56	4	175	41
TOTAL	3,234	98	34,485	2,122

Graph 9. Sales of new motorcycles: December 2015



Graph 10. Sales of new motorcycles: January - December 2015



EXPLANATORY NOTES

Survey on the issuing of new road motor vehicle circulation licenses

The survey on the issuing of new motor vehicle circulation licenses is a census survey. The released data give information, at country level, on the brand and type of the motor vehicle, as well as whether it is new or used. The primary data derive from the Ministry of Infrastructure, Transport and Networks and are based on the issuing of new circulation licences. The survey does not include vehicles that move on rails, trolley busses, agricultural tractors and machinery. In addition, the following are excluded: all motor vehicles of the Armed Forces, Police, Fire Brigade, State Services, Diplomatic Corps, Foreign Missions, and Invalids of Wars, as well as motorcycles with a cylinder capacity less than 50 cc.

Legal basis Law 3832/2010

Reference Period December 2015

Coverage The production of monthly data is based on the registers held by the Ministry of Infrastructure, Transport and Networks, which records all the monthly changes observed in the vehicle registration licences at country level.

Definitions **Road motor vehicle** is any vehicle that, irrespective of the number of wheels, is moved by an engine and is designed to transport persons or cargo or both of them, either they are on the same single vehicle or on a trailer carried by the main motor vehicle. **New** road motor vehicle is any motor vehicle that is registered for the first time in Greece during the reference month and has not been put into circulation in any other country. **Used motor** vehicle is any motor vehicle that is registered for the first time in Greece and has been imported as a used one from abroad

Passenger motor vehicle: it is a motor vehicle designed to carry mostly people, having no more than 9 seats, including the driver's seat.

Bus: it is a motor vehicle, which is designed to carry mostly people, having more than 10 seats, including the driver's seat. (In the corresponding tables of this Press Release, this category also includes articulated buses.)

Lorry: it is motor vehicle designed to carry mostly cargo. (In the corresponding tables of this Press Release, this category also includes tractors, tow trucks, articulated tractors, and trucks with trailers).

Motorcycle: any two-wheeled motor vehicle, with or without sidecar, with maximum authorized design speed over 45 km/h, or in case it is powered by a combustion engine, with a cylinder capacity of 50 cc or over (In the corresponding tables of this Press Release, this category also includes the three-wheeled motor vehicles – motor tricycles).

Tricycle motor vehicle: it is a motor vehicle with three symmetrical wheels with maximum authorized design speed over 45 km/h, or in case it is powered by a combustion engine, with a cylinder capacity over the 50 cc. This category also includes four-wheel vehicles, except the light four-wheel motorcycles, whose empty vehicle tare (excluding the weight of the fuel or mixture of fuel-oil or the weight of the batteries for electric cars) is up to 400 kg in the case the vehicle is designed for passenger use or up to 550 kg in case the vehicle is designed to carry cargo and whose engine is up to 15KW.

Methodology Exhaustive Survey

References

More information (graphs, tables) concerning the survey on the issuing of new motor vehicle circulation licences are available on the webpage of ELSTAT, www.statistics.gr, under the link "Statistical Themes > Transport > Vehicles > Vehicle > Vehicle Licensing – Vehicle Fleet