



INDUSTRIAL PRODUCTION INDEX: May 2024, y-o-y increase of 6.7%

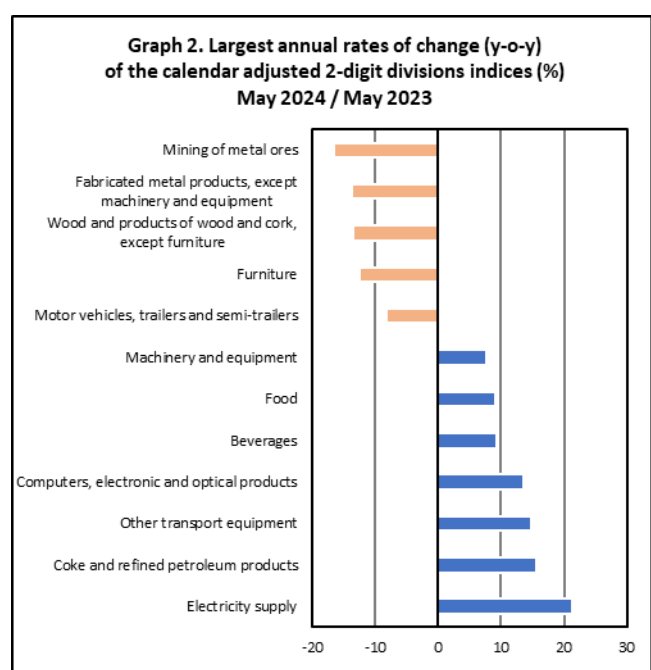
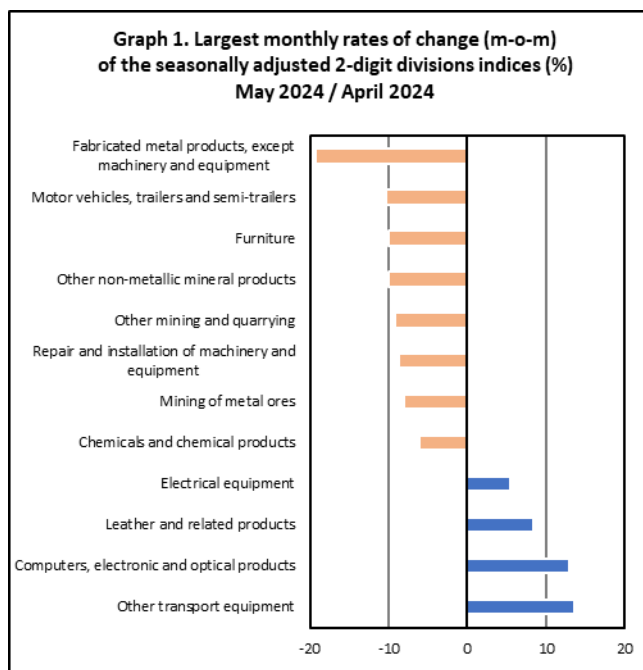
The Hellenic Statistical Authority announces the Industrial Production Index (IPI) with base year 2015=100.0 for May 2024, the evolution of which, on the basis of provisional and working day adjusted data, is as follows:

The Overall Industrial Production Index in May 2024 recorded an increase of 6.7% compared with May 2023. The Overall IPI in May 2023 increased by 2.3% compared with the corresponding index in May 2022 (Table 1).

The average Overall Industrial Production Index for the period from January to May 2024 recorded an increase of 5.8% compared with the average IPI of the period from January to May 2023 (Table 2).

The seasonally adjusted Overall Industrial Production Index in May 2024 recorded a decrease of 3.4% compared with the corresponding index of April 2024 (Table 4).

The index of fabricated metal products, except machinery and equipment division showed the greatest percentage decrease, whereas the index of other transport equipment division recorded the greatest percentage increase in May 2024 compared with April 2024. Comparing the indices of May 2024 with the corresponding indices of May 2023, the greatest percentage increase was recorded in electricity supply division, while the highest percentage decrease was recorded in mining of metal ores division (Tables 1 and 4).



Information on methodological issues:

Business Statistics Division
Manufacture-Construction Indices and Industrial Products Section
Head of the Section: Diamantaki Aikaterini
Tel: +30 213 135 2056
E-mail: a.diamantaki@statistics.gr

Information on data provision:

Tel: +30 213 135 2023, 2308, 2310
E-mail: data.dissem@statistics.gr

Evolution of the Industrial Production Index in May 2024

I. Annual changes: May 2024 / May 2023 (Table 1)

The 6.7% increase of the working day adjusted Overall IPI in May 2024, compared with the corresponding index in May 2023, is due to the annual changes of the sub-indices in the following industrial sections:

Increase of:

- 21.2% in the Electricity Supply Index.
- 4.4% in the Manufacturing Index. The increase was mainly the result of the annual changes of the sub-indices in the following 2-digit divisions: coke and refined petroleum products, other transport equipment, computers, electronic and optical products, beverages, food.
- 3.5% in the Water Supply Index.

Decrease of:

- 2.4% in the Mining and Quarrying Index. The decrease was the result of the annual changes of the sub-indices in the following 2-digit divisions: mining of metal ores, mining of coal and lignite – extraction of crude petroleum and natural gas – mining support service activities.

II. Rates of change of the average index of the period January - May 2024 compared with the corresponding index of the period January - May 2023 (Table 2)

The 5.8% increase of the working day adjusted average Overall IPI in the 5-month period January - May 2024, compared with the corresponding index in January - May 2023, is due to the corresponding rates of change of the sub-indices in the following industrial sections:

Increase of:

- 14.4% in the Electricity Supply Index.
- 4.1% in the Manufacturing Index.
- 4.0% in the Water Supply Index.
- 2.7% in the Mining and Quarrying Index

III. Monthly changes: May 2024 / April 2024 (Table 4)

The 3.4% decrease of the seasonally adjusted Overall IPI in May 2024, compared with the corresponding index in April 2024 is due to the monthly changes of the sub-indices in the following industrial sections:

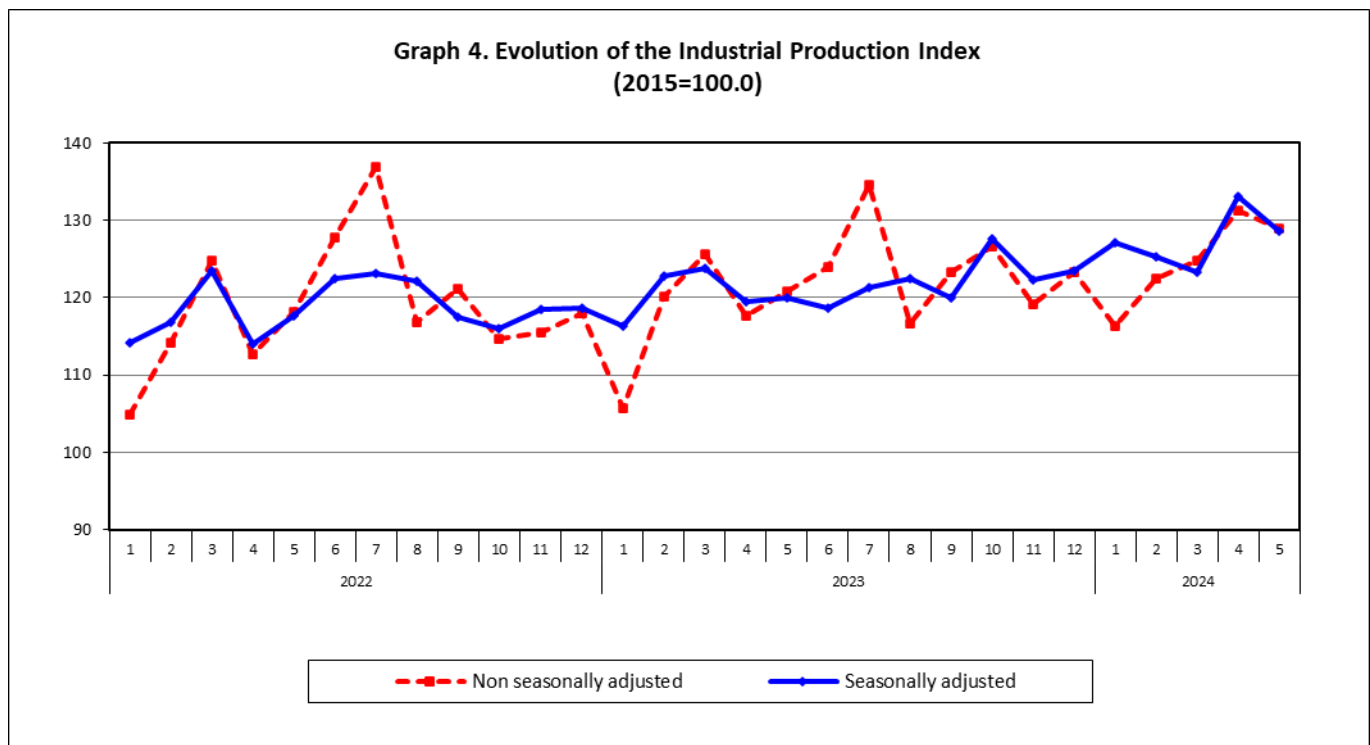
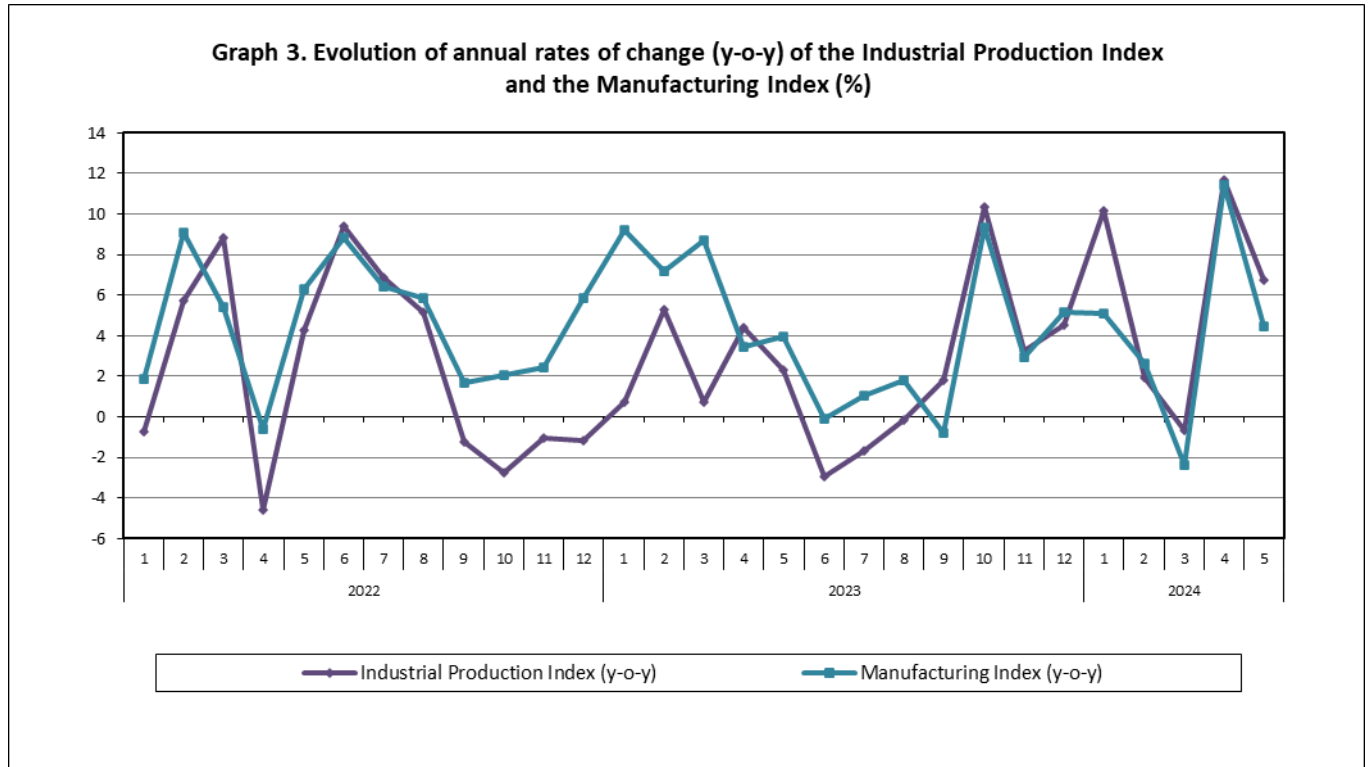
Decrease of:

- 7.9% in the Mining and Quarrying Index.
- 5.3% in the Water Supply Index.
- 2.7% in the Manufacturing Index.

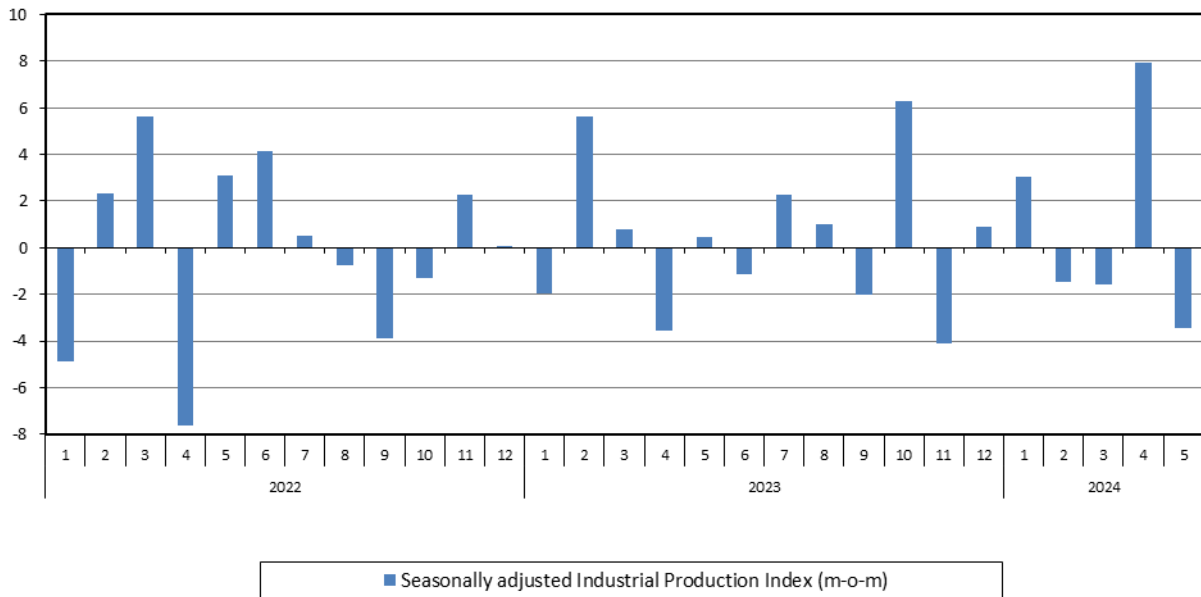
Increase of:

- 0.2% in the Electricity Supply Index.

The following graphs depict the annual rates of change (y-o-y) of the Industrial Production Index and the Manufacturing Index, the evolution of the seasonally and non-seasonally adjusted Overall Industrial Production Index, as well as the monthly rates of change (m-o-m) of the seasonally adjusted index.



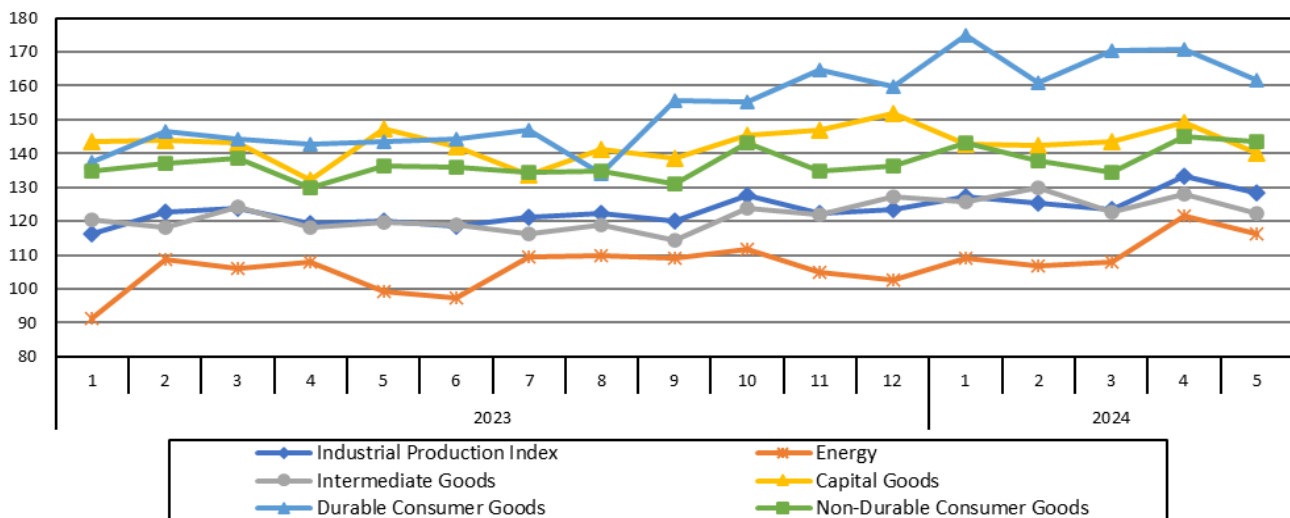
Graph 5. Evolution of the monthly rates of change (m-o-m) of the seasonally adjusted Industrial Production Index (%)



It should be noted that the time series with the seasonally adjusted indices is recalculated every time a new observation is added in the time series. Therefore, the seasonally adjusted data differ from the data published in the previous Announcement.

The following graphs depict the evolution of the seasonally adjusted Industrial Production Index and the Main Industrial Groupings, as well as the evolution of the Industrial Production Index and the Industrial Sections Indices.

Graph 6. Evolution of the seasonally adjusted Industrial Production Index and the Main Industrial Groupings Indices, January 2023 - May 2024 (2015=100.0)



**Graph 7. Evolution of the Industrial Production Index and the Industrial Section Indices
(2015=100.0)**

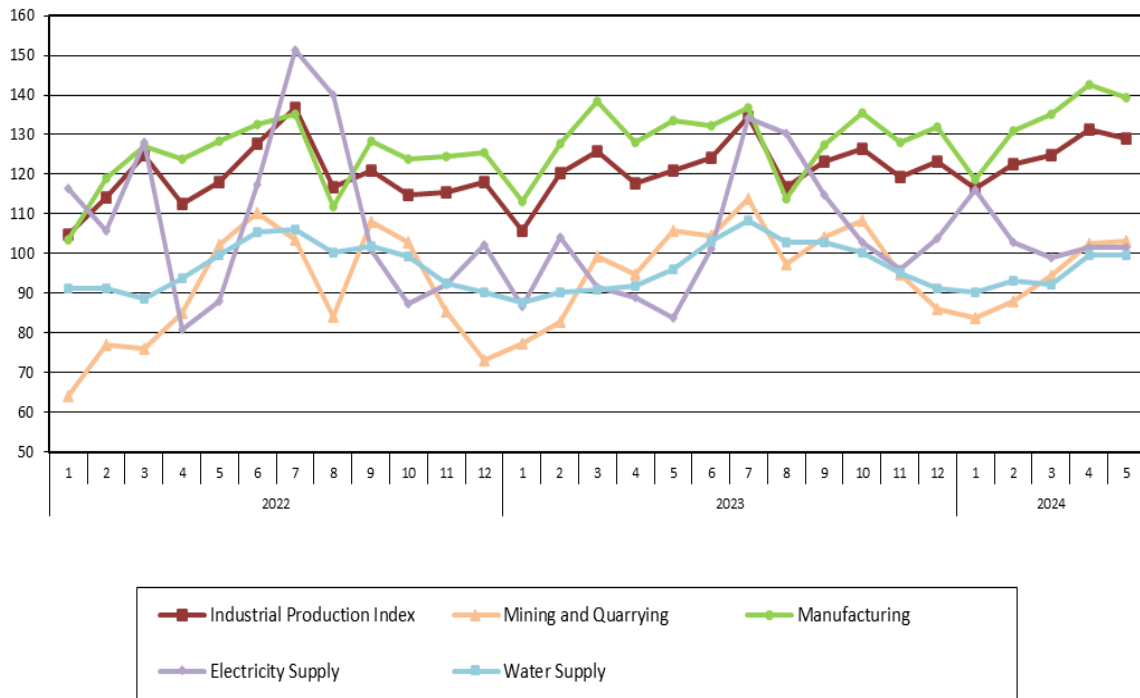


Table 1. Annual rates of change of the Industrial Production Index*(Working day adjusted data, according to the real number of working days)*

Base year: 2015=100.0

Code	Division	May			Rate of change (%)	
		2024*	2023*	2022	2024/2023	2023/2022
OVERALL INDEX		129.00	120.86	118.11	6.7	2.3
B	MINING AND QUARRYING	103.18	105.66	102.28	-2.4	3.3
05-06-09	Mining of coal and lignite – Extraction of crude petroleum and natural gas – Mining support service activities	23.56	24.24	23.24	-2.8	4.3
07	Mining of metal ores	117.13	140.17	131.44	-16.4	6.6
08	Other mining and quarrying	110.09	105.76	103.87	4.1	1.8
C	MANUFACTURING	139.40	133.48	128.41	4.4	3.9
10	Food	127.20	116.56	109.18	9.1	6.8
11	Beverages	124.33	113.81	121.86	9.2	-6.6
12	Tobacco products	169.08	163.48	128.78	3.4	26.9
13	Textiles	115.52	120.98	118.65	-4.5	2.0
14	Wearing apparel	66.35	66.71	81.91	-0.5	-18.6
15	Leather and related products	105.55	103.97	88.09	1.5	18.0
16	Wood and products of wood and cork, except furniture	105.89	122.46	118.21	-13.5	3.6
17	Paper and paper products	120.29	116.13	122.68	3.6	-5.3
18	Printing and reproduction of recorded products	147.44	140.78	147.23	4.7	-4.4
19	Coke and refined petroleum products	113.06	97.85	102.92	15.6	-4.9
20	Chemicals and chemical products	142.83	138.74	140.44	2.9	-1.2
21	Basic pharmaceutical products and pharmaceutical preparations	302.61	297.63	236.84	1.7	25.7
22	Rubber and plastic products	131.85	134.97	135.43	-2.3	-0.3
23	Other non-metallic mineral products	144.47	140.52	135.07	2.8	4.0
24	Basic metals	140.62	133.17	134.25	5.6	-0.8
25	Fabricated metal products, except machinery and equipment	138.63	160.44	155.96	-13.6	2.9
26	Computers, electronic and optical products	248.95	219.05	186.77	13.6	17.3
27	Electrical equipment	157.54	146.88	143.87	7.3	2.1
28	Machinery and equipment n. e. c.	140.74	130.70	134.44	7.7	-2.8
29	Motor vehicles, trailers and semi-trailers	169.35	184.38	187.65	-8.1	-1.7
30	Other transport equipment	96.40	83.94	77.61	14.8	8.2
31	Furniture	169.10	192.96	167.54	-12.4	15.2
32	Other manufacturing	152.71	149.95	145.10	1.8	3.3
33	Repair and installation of machinery and equipment	105.38	104.04	112.72	1.3	-7.7
D	ELECTRICITY SUPPLY	101.50	83.74	87.91	21.2	-4.7
35	Electricity supply	101.50	83.74	87.91	21.2	-4.7
E	WATER SUPPLY	99.55	96.22	99.64	3.5	-3.4
36	Water collection, treatment and supply	99.55	96.22	99.64	3.5	-3.4
MAIN INDUSTRIAL GROUPINGS						
1	Energy	104.79	89.33	93.69	17.3	-4.7
2	Intermediate goods	131.60	129.23	129.78	1.8	-0.4
3	Capital goods	142.02	150.58	139.41	-5.7	8.0
4	Consumer Durables	177.85	159.45	152.58	11.5	4.5
5	Consumer Non-Durables	150.31	142.67	131.18	5.4	8.8

* Provisional data

Note: The indices are rounded up to two decimal digits when published and percentage changes up to one decimal digit when published.

Table 2. Average indices of the period January – May and rates of change of the Industrial Production Index
(Working day adjusted data, according to the real number of working days)

Base year: 2015=100.0

Code	Division	Average indices of the period Jan.-May			Rate of change (%)	
		2024*	2023*	2022	2024/2023	2023/2022
OVERALL INDEX		124.80	117.99	114.90	5.8	2.7
B	MINING AND QUARRYING	94.37	91.93	80.98	2.7	13.5
05-06-09	Mining of coal and lignite – Extraction of crude petroleum and natural gas – Mining support service activities	17.89	25.41	22.75	-29.6	11.7
07	Mining of metal ores	124.75	127.46	104.95	-2.1	21.5
08	Other mining and quarrying	95.15	89.48	81.29	6.3	10.1
C	MANUFACTURING	133.36	128.10	120.39	4.1	6.4
10	Food	117.80	111.93	106.93	5.2	4.7
11	Beverages	102.46	97.66	98.14	4.9	-0.5
12	Tobacco products	157.81	146.18	121.73	8.0	20.1
13	Textiles	108.84	116.89	116.04	-6.9	0.7
14	Wearing apparel	67.86	76.90	81.71	-11.7	-5.9
15	Leather and related products	95.56	107.62	81.44	-11.2	32.1
16	Wood and products of wood and cork, except furniture	108.12	110.41	105.97	-2.1	4.2
17	Paper and paper products	116.80	116.19	121.83	0.5	-4.6
18	Printing and reproduction of recorded products	140.16	131.47	136.57	6.6	-3.7
19	Coke and refined petroleum products	115.75	111.98	100.97	3.4	10.9
20	Chemicals and chemical products	142.03	129.54	127.85	9.6	1.3
21	Basic pharmaceutical products and pharmaceutical preparations	292.54	283.79	225.06	3.1	26.1
22	Rubber and plastic products	129.24	128.91	132.85	0.3	-3.0
23	Other non-metallic mineral products	143.07	127.62	121.60	12.1	4.9
24	Basic metals	135.34	134.44	133.21	0.7	0.9
25	Fabricated metal products, except machinery and equipment	139.85	133.03	131.08	5.1	1.5
26	Computers, electronic and optical products	259.56	241.45	194.29	7.5	24.3
27	Electrical equipment	147.18	138.86	143.56	6.0	-3.3
28	Machinery and equipment n. e. c.	126.24	126.30	119.74	-0.1	5.5
29	Motor vehicles, trailers and semi-trailers	136.35	159.84	140.13	-14.7	14.1
30	Other transport equipment	66.28	59.34	62.75	11.7	-5.4
31	Furniture	150.44	153.10	140.80	-1.7	8.7
32	Other manufacturing	126.24	127.38	120.87	-0.9	5.4
33	Repair and installation of machinery and equipment	96.66	92.32	89.85	4.7	2.7
D	ELECTRICITY SUPPLY	104.16	91.03	103.82	14.4	-12.3
35	Electricity supply	104.16	91.03	103.82	14.4	-12.3
E	WATER SUPPLY	95.03	91.37	92.91	4.0	-1.7
36	Water collection, treatment and supply	95.03	91.37	92.91	4.0	-1.7
MAIN INDUSTRIAL GROUPINGS						
1	Energy	106.71	97.57	101.65	9.4	-4.0
2	Intermediate goods	127.14	121.55	121.05	4.6	0.4
3	Capital goods	134.06	132.65	121.27	1.1	9.4
4	Consumer Durables	158.09	134.83	124.22	17.3	8.5
5	Consumer Non-Durables	140.71	135.16	123.98	4.1	9.0

* Provisional data

Note: The indices are rounded up to two decimal digits when published and percentage changes up to one decimal digit when published.

Table 3. Monthly rate of change of the Industrial Production Index
(Working day adjusted data, according to the real number of working days)

Base year: 2015=100.0

Code	Division	May 2024*	April 2024**	Rate of change (%) May 2024/April 2024
OVERALL INDEX		129.00	131.34	-1.8
B	MINING AND QUARRYING	103.18	102.39	0.8
05-06-09	Mining of coal and lignite – Extraction of crude petroleum and natural gas – Mining support service activities	23.56	23.46	0.4
07	Mining of metal ores	117.13	120.83	-3.1
08	Other mining and quarrying	110.09	107.65	2.3
C	MANUFACTURING	139.40	142.64	-2.3
10	Food	127.20	124.42	2.2
11	Beverages	124.33	124.68	-0.3
12	Tobacco products	169.08	169.92	-0.5
13	Textiles	115.52	111.70	3.4
14	Wearing apparel	66.35	67.45	-1.6
15	Leather and related products	105.55	128.43	-17.8
16	Wood and products of wood and cork, except furniture	105.89	111.07	-4.7
17	Paper and paper products	120.29	119.65	0.5
18	Printing and reproduction of recorded products	147.44	147.95	-0.3
19	Coke and refined petroleum products	113.06	120.27	-6.0
20	Chemicals and chemical products	142.83	152.92	-6.6
21	Basic pharmaceutical products and pharmaceutical preparations	302.61	312.88	-3.3
22	Rubber and plastic products	131.85	136.53	-3.4
23	Other non-metallic mineral products	144.47	156.90	-7.9
24	Basic metals	140.62	138.53	1.5
25	Fabricated metal products, except machinery and equipment	138.63	161.72	-14.3
26	Computers, electronic and optical products	248.95	228.94	8.7
27	Electrical equipment	157.54	149.10	5.7
28	Machinery and equipment n. e. c.	140.74	135.79	3.6
29	Motor vehicles, trailers and semi-trailers	169.35	155.89	8.6
30	Other transport equipment	96.40	72.38	33.2
31	Furniture	169.10	192.73	-12.3
32	Other manufacturing	152.71	141.80	7.7
33	Repair and installation of machinery and equipment	105.38	107.42	-1.9
D	ELECTRICITY SUPPLY	101.50	101.49	0.0
35	Electricity supply	101.50	101.49	0.0
E	WATER SUPPLY	99.55	99.75	-0.2
36	Water collection, treatment and supply	99.55	99.75	-0.2
MAIN INDUSTRIAL GROUPINGS				
1	Energy	104.79	107.09	-2.1
2	Intermediate goods	131.60	133.93	-1.7
3	Capital goods	142.02	147.95	-4.0
4	Consumer Durables	177.85	189.31	-6.1
5	Consumer Non-Durables	150.31	151.30	-0.7

* Provisional data **Revised data

Note: The indices are rounded up to two decimal digits when published and percentage changes up to one decimal digit when published.

Table 4. Monthly rate of change of the seasonally adjusted Industrial Production Index

Base year: 2015=100.0

Code	Division	May 2024	April 2024	Rate of change (%) May 2024 / April 2024
OVERALL INDEX		128.54	133.13	-3.4
B	MINING AND QUARRYING	94.23	102.26	-7.9
05-06-09	Mining of coal and lignite – Extraction of crude petroleum and natural gas – Mining support service activities	-	-	-
07	Mining of metal ores	110.71	120.47	-8.1
08	Other mining and quarrying	97.14	107.03	-9.2
C	MANUFACTURING	134.06	137.81	-2.7
10	Food	125.09	122.61	2.0
11	Beverages	107.18	113.14	-5.3
12	Tobacco products	154.39	151.22	2.1
13	Textiles	102.86	104.17	-1.3
14	Wearing apparel	68.26	65.01	5.0
15	Leather and related products	94.11	86.88	8.3
16	Wood and products of wood and cork, except furniture	101.95	106.73	-4.5
17	Paper and paper products	117.58	111.78	5.2
18	Printing and reproduction of recorded products	139.14	139.38	-0.2
19	Coke and refined petroleum products	115.24	121.70	-5.3
20	Chemicals and chemical products	131.76	140.24	-6.1
21	Basic pharmaceutical products and pharmaceutical preparations	294.28	303.21	-2.9
22	Rubber and plastic products	123.09	124.92	-1.5
23	Other non-metallic mineral products	131.77	146.33	-10.0
24	Basic metals	134.49	136.23	-1.3
25	Fabricated metal products, except machinery and equipment	126.16	156.21	-19.2
26	Computers, electronic and optical products	264.20	233.92	12.9
27	Electrical equipment	150.43	142.73	5.4
28	Machinery and equipment n. e. c.	134.16	129.18	3.9
29	Motor vehicles, trailers and semi-trailers	163.47	182.23	-10.3
30	Other transport equipment	82.47	72.66	13.5
31	Furniture	143.70	159.60	-10.0
32	Other manufacturing	141.58	138.43	2.3
33	Repair and installation of machinery and equipment	105.38	115.49	-8.8
D	ELECTRICITY SUPPLY	121.73	121.45	0.2
35	Electricity supply	121.73	121.45	0.2
E	WATER SUPPLY	97.59	103.03	-5.3
36	Water collection, treatment and supply	97.59	103.03	-5.3
MAIN INDUSTRIAL GROUPINGS				
1	Energy	116.45	121.49	-4.2
2	Intermediate goods	122.19	127.95	-4.5
3	Capital goods	140.09	149.20	-6.1
4	Consumer Durables	161.84	170.80	-5.2
5	Consumer Non-Durables	143.35	145.05	-1.2

Notes:

1. The indices are rounded up to two decimal digits when published and percentage changes up to one decimal digit when published.
2. The whole time-series with seasonally adjusted indices is recalculated every time a new observation is added in the time-series.
3. The composed index of divisions 05-06-09 is not seasonally adjusted.

Table 5. Evolution of the Overall Industrial Production Index
(Working day adjusted data, according to the real number of working days)

Base year: 2015=100.0

Year and month	Overall Index	Monthly rate of change (%)	Annual rate of change (%)	12-month average index (moving average)	Rate of change of the 12-month average index (%)
2022: 1	104.88	-12.1	-0.7	115.94	9.7
2	114.17	8.9	5.8	116.46	9.9
3	124.73	9.2	8.8	117.30	10.1
4	112.63	-9.7	-4.6	116.85	7.9
5	118.11	4.9	4.3	117.25	7.1
6	127.84	8.2	9.4	118.17	7.1
7	136.86	7.1	6.9	118.90	7.0
8	116.79	-14.7	5.1	119.38	6.6
9	121.10	3.7	-1.2	119.25	5.6
10	114.71	-5.3	-2.8	118.98	4.0
11	115.41	0.6	-1.0	118.88	3.3
12	117.96	2.2	-1.2	118.77	2.4
Annual average	118.77				
2023*: 1	105.63	-10.5	0.7	118.83	2.5
2	120.18	13.8	5.3	119.33	2.5
3	125.66	4.6	0.7	119.41	1.8
4	117.60	-6.4	4.4	119.82	2.5
5	120.86	2.8	2.3	120.05	2.4
6	124.05	2.6	-3.0	119.73	1.3
7	134.56	8.5	-1.7	119.54	0.5
8	116.61	-13.3	-0.2	119.53	0.1
9	123.27	5.7	1.8	119.71	0.4
10	126.57	2.7	10.3	120.70	1.4
11	119.19	-5.8	3.3	121.01	1.8
12	123.30	3.4	4.5	121.46	2.3
Annual average	121.46				
2024*: 1	116.34	-5.6	10.1	122.35	3.0
2	122.51	5.3	1.9	122.54	2.7
3	124.82	1.9	-0.7	122.47	2.6
4	131.34	5.2	11.7	123.62	3.2
5	129.00	-1.8	6.7	124.30	3.5

* Provisional data

Note: The indices are rounded up to two decimal digits when published and percentage changes up to one decimal digit when published.

Table 6. Monthly evolution of the seasonally adjusted Overall Industrial Production Index and Main Industrial Groupings

Base year: 2015=100.0

Year and month	Overall Index		Energy		Intermediate goods		Capital goods		Consumer durables		Consumer non-durables		
	Index	Monthly rate of change (%)	Index	Monthly rate of change (%)	Index	Monthly rate of change (%)	Index	Monthly rate of change (%)	Index	Monthly rate of change (%)	Index	Monthly rate of change (%)	
2022:	1	114.20	-4.9	106.41	-6.2	118.68	-3.9	118.73	-7.9	119.14	0.5	118.70	-3.5
	2	116.85	2.3	102.54	-3.6	122.67	3.4	129.93	9.4	126.27	6.0	125.70	5.9
	3	123.46	5.7	120.76	17.8	119.29	-2.8	129.82	-0.1	137.96	9.3	127.55	1.5
	4	114.06	-7.6	99.34	-17.7	118.17	-0.9	129.70	-0.1	135.49	-1.8	123.44	-3.2
	5	117.60	3.1	104.19	4.9	120.24	1.7	136.19	5.0	134.28	-0.9	126.01	2.1
	6	122.47	4.1	113.97	9.4	121.34	0.9	139.58	2.5	136.52	1.7	128.41	1.9
	7	123.10	0.5	118.05	3.6	119.58	-1.4	142.30	2.0	132.88	-2.7	126.39	-1.6
	8	122.20	-0.7	115.63	-2.1	121.07	1.2	136.37	-4.2	152.52	14.8	125.76	-0.5
	9	117.45	-3.9	98.70	-14.6	121.37	0.3	141.71	3.9	137.43	-9.9	129.64	3.1
	10	115.91	-1.3	99.24	0.5	116.55	-4.0	137.91	-2.7	148.58	8.1	128.11	-1.2
	11	118.53	2.3	101.32	2.1	117.76	1.0	136.17	-1.3	143.56	-3.4	134.02	4.6
	12	118.62	0.1	101.14	-0.2	120.37	2.2	134.42	-1.3	153.59	7.0	132.43	-1.2
Annual average		118.71		106.77		119.76		134.40		138.19		127.18	
2023:	1	116.32	-1.9	91.49	-9.5	120.53	0.1	143.39	6.7	137.40	-10.5	134.83	1.8
	2	122.85	5.6	108.54	18.6	118.17	-2.0	144.04	0.5	146.67	6.7	136.96	1.6
	3	123.79	0.8	106.19	-2.2	124.06	5.0	143.02	-0.7	144.32	-1.6	138.75	1.3
	4	119.40	-3.5	107.85	1.6	118.23	-4.7	132.10	-7.6	142.68	-1.1	129.75	-6.5
	5	119.93	0.4	99.36	-7.9	119.87	1.4	147.26	11.5	143.43	0.5	136.42	5.1
	6	118.58	-1.1	97.52	-1.8	119.11	-0.6	142.18	-3.4	144.09	0.5	136.09	-0.2
	7	121.25	2.3	109.65	12.4	116.22	-2.4	133.73	-5.9	146.92	2.0	134.55	-1.1
	8	122.45	1.0	109.87	0.2	119.04	2.4	141.22	5.6	134.03	-8.8	134.75	0.1
	9	119.99	-2.0	108.99	-0.8	114.51	-3.8	138.48	-1.9	155.50	16.0	130.85	-2.9
	10	127.55	6.3	111.76	2.5	124.03	8.3	145.44	5.0	155.31	-0.1	143.24	9.5
	11	122.29	-4.1	104.95	-6.1	121.93	-1.7	147.09	1.1	164.79	6.1	134.84	-5.9
	12	123.39	0.9	102.70	-2.1	127.07	4.2	151.96	3.3	159.73	-3.1	136.17	1.0
Annual average		121.48		104.91		120.23		142.49		147.91		135.60	
2024:	1	127.14	3.0	109.23	6.4	125.74	-1.0	142.84	-6.0	175.02	9.6	143.28	5.2
	2	125.28	-1.5	106.70	-2.3	129.88	3.3	142.39	-0.3	160.98	-8.0	137.85	-3.8
	3	123.32	-1.6	108.07	1.3	122.89	-5.4	143.42	0.7	170.28	5.8	134.40	-2.5
	4	133.13	8.0	121.49	12.4	127.95	4.1	149.20	4.0	170.80	0.3	145.05	7.9
	5	128.54	-3.4	116.45	-4.2	122.19	-4.5	140.09	-6.1	161.84	-5.2	143.35	-1.2

Notes:

1. The indices are rounded up to two decimal digits when published and percentage changes up to one decimal digit when published.
2. The whole time-series with seasonally adjusted indices is recalculated every time a new observation is added in the time-series.

METHODOLOGICAL NOTES

Generally	The Industrial Production Index (IPI) in Greece has been compiled by the Hellenic Statistical Authority (ELSTAT) from 1959 onwards.
Purpose of the index	The objective of the index is to compare the magnitude (volume) of the output in the current month in the mining and quarrying, manufacturing, electricity and water supply divisions with the corresponding output of a given fixed period, which is considered as base period. The Industrial Production Index shows the evolution of the value added of the production factors cost, at constant prices.
Legal framework	The compilation of the IPI is based on the framework of the implementation of Council Regulation (EC) No 1165/1998 concerning short-term statistics (STS-R). Furthermore, the IPI is governed by Regulation (EC) No 1893/2006 of the European Parliament and of the Council, by Commission Regulation (EC) No 656/2007, by Council Regulation (EC) No 451/2008, by Regulation (EU) No 2019/2152 of the European Parliament and of the Council on European business statistics, as well as Commission Implementing Regulation (EU) No 2020/1197 laying down technical specifications and arrangements pursuant to Regulation (EU) No 2019/2152.
Reference period	Month.
Base year	2015=100.0.
Revision	The IPI is a fixed base index. The Industrial Production Index was currently revised with new base year 2015 (2015=100.0) according to the provisions of Council Regulation No 1165/1998 concerning short-term statistics. Short-term indices are revised every five (5) years, particularly in calendar years ending in 0 or 5.
Statistical classifications	At the level of branches of economic activities, the statistical classification of economic activities NACE Rev.2 of EU was used (Regulation No 1893/2006), while at the level of main industrial groupings, the allocation of two-digit and three-digit NACE Rev. 2 headings to categories of aggregate classification was used, in accordance with Council Regulation No 656/2007. At product level, the statistical classification CPA 2008 of EU was used, according to Council Regulation No 451/2008.
Geographical coverage	The index covers the whole Country.
Coverage of economic activities	The index covers all the sections of industry, the main industrial groups, as well as all levels of economic activity.
Statistical survey	The data are collected from a sample of 1,263 enterprises. The survey covers 325 products and the measurement of the surveyed products is made in terms of output quantities or in terms of production value or turnover, according to the specific features in each branch of economic activity.
Seasonal adjustment	Seasonal adjustment is the procedure followed to remove the impact of seasonality on the time-series (i.e. the impact of monthly effects, e.g. holidays, tourist period etc.), in order to improve comparability over time. The method applied is TRAMO-SEATS with the use of JDemetra+ 2.0.0. For the seasonal adjustment of the Industrial Production Index at 2-digit level of NACE Rev.2, at section level (B – Mining and Quarrying, C – Manufacturing, D – Electricity and E – Water Supply) and for the Main Industrial Groupings (MIGs), the direct approach is applied, namely each time-series is seasonally adjusted independently. For the overall Industrial Production Index, the indirect approach is applied, with the seasonally adjusted IPI being computed by aggregating the seasonally adjusted MIGs using appropriate weights.
Publication of data	The revised IPI with the new base year 2015 (2015=100.0) is released since July 2019, with May 2019 as the first reference month. Data with base year 2015=100.0 are available from January 2000 onwards.
References	More information about the methodology concerning the compilation and calculation of the index and the time series are available on the website of the Hellenic Statistical Authority (ELSTAT) (http://www.statistics.gr/en/statistics/-/publication/DKT21/-).