

# STATISTICS IN INFOGRAPHICS

## 2018



HELLENIC STATISTICAL AUTHORITY



*One of the priorities I set when I assumed duty as head of ELSTAT was to effectively communicate statistical information to the Greek society.*

*Building on the collective efforts of ELSTAT's personnel we started, working on the visualization of a selection of our statistics and their underlying production procedures. The idea is to provide information which is accessible to the wider public and easy to share in the social media, an important source of information for millions of users nowadays.*

*The collection you are holding is a selection of infographics, produced entirely in-house by the Directorate of Statistical Information and Publications. We are looking forward to any comments and suggestions you may have in order to help us achieve an even better result next year.*

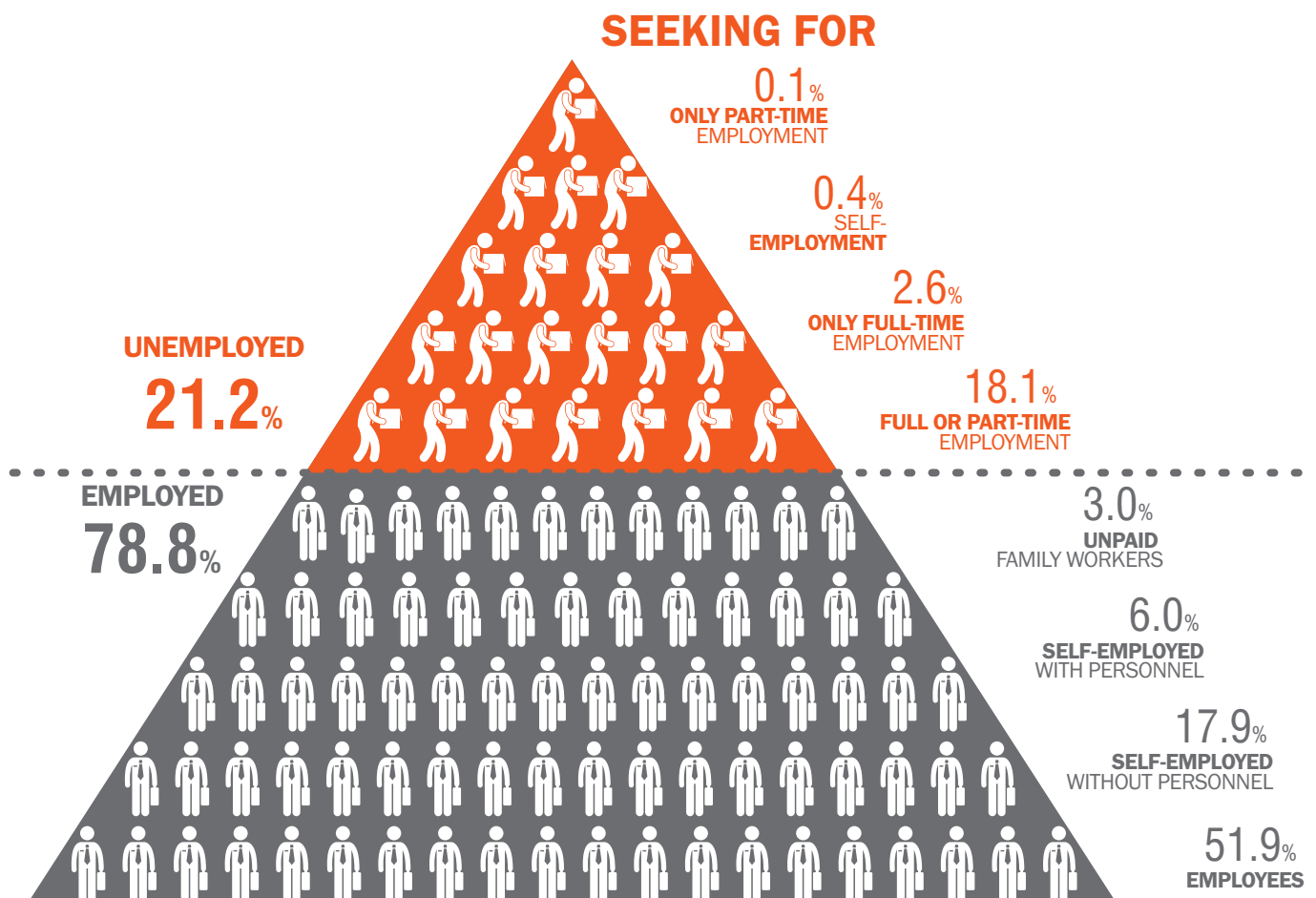
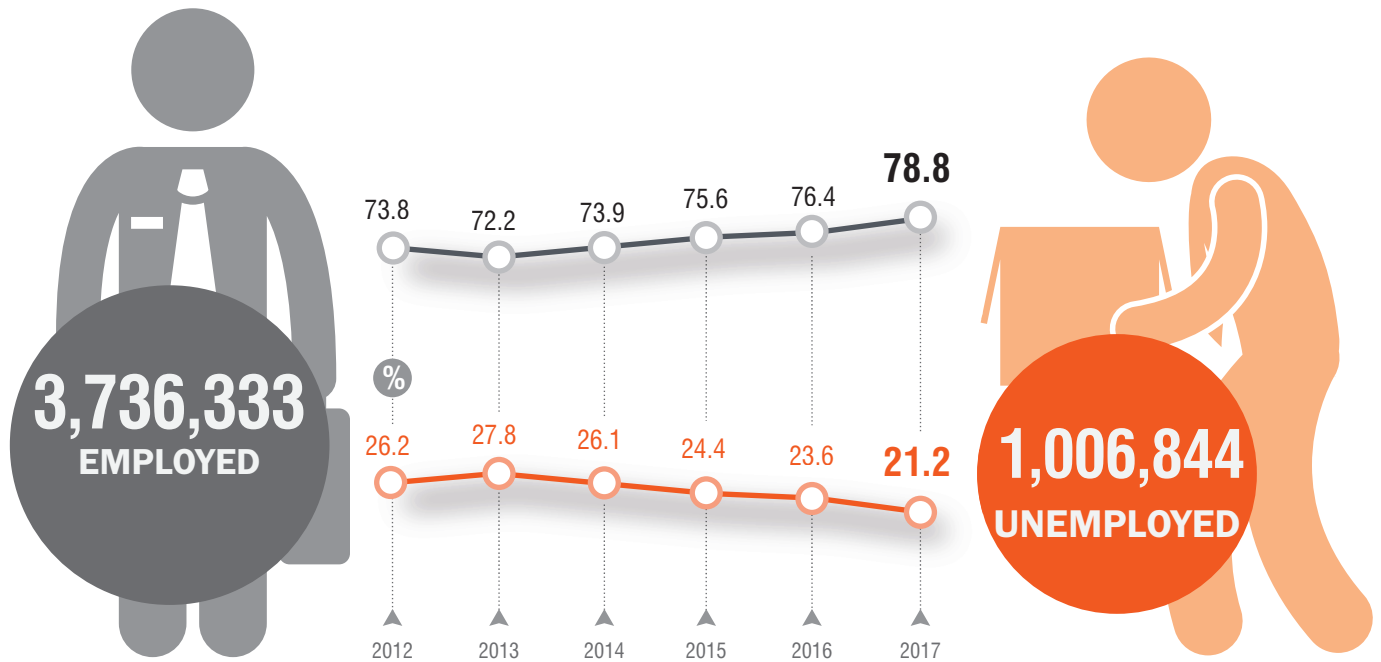
*Wishing you an enjoyable reading,*

A handwritten signature in black ink, appearing to read 'Athanasios C. Thanopoulos', with a stylized flourish at the end.

Athanasios C. Thanopoulos  
President of ELSTAT

# Labour force, 2017

(4th quarter)

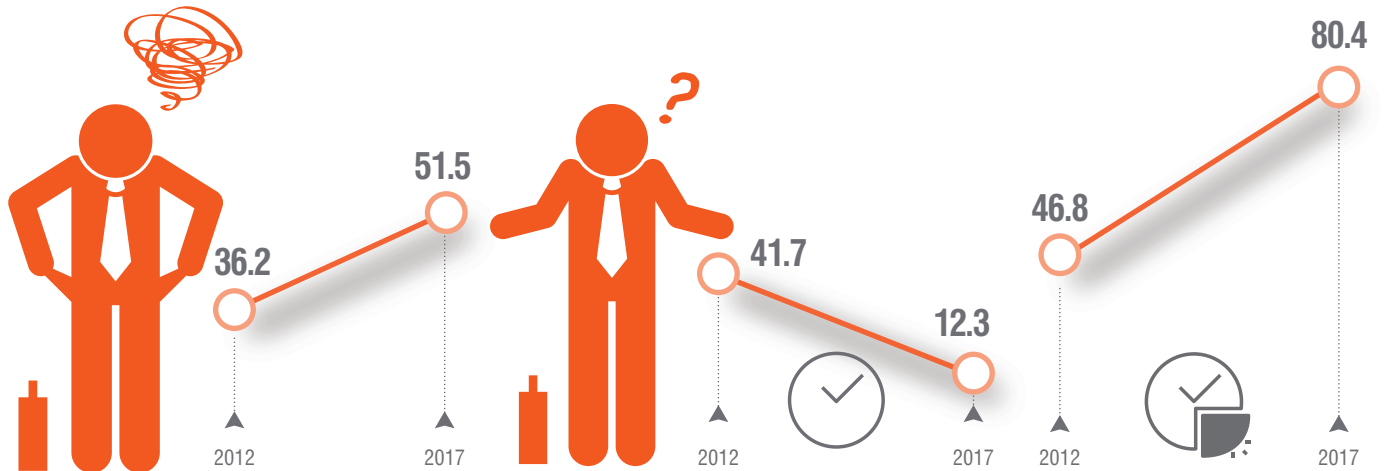


## UNEMPLOYED (2017, 4th quarter)

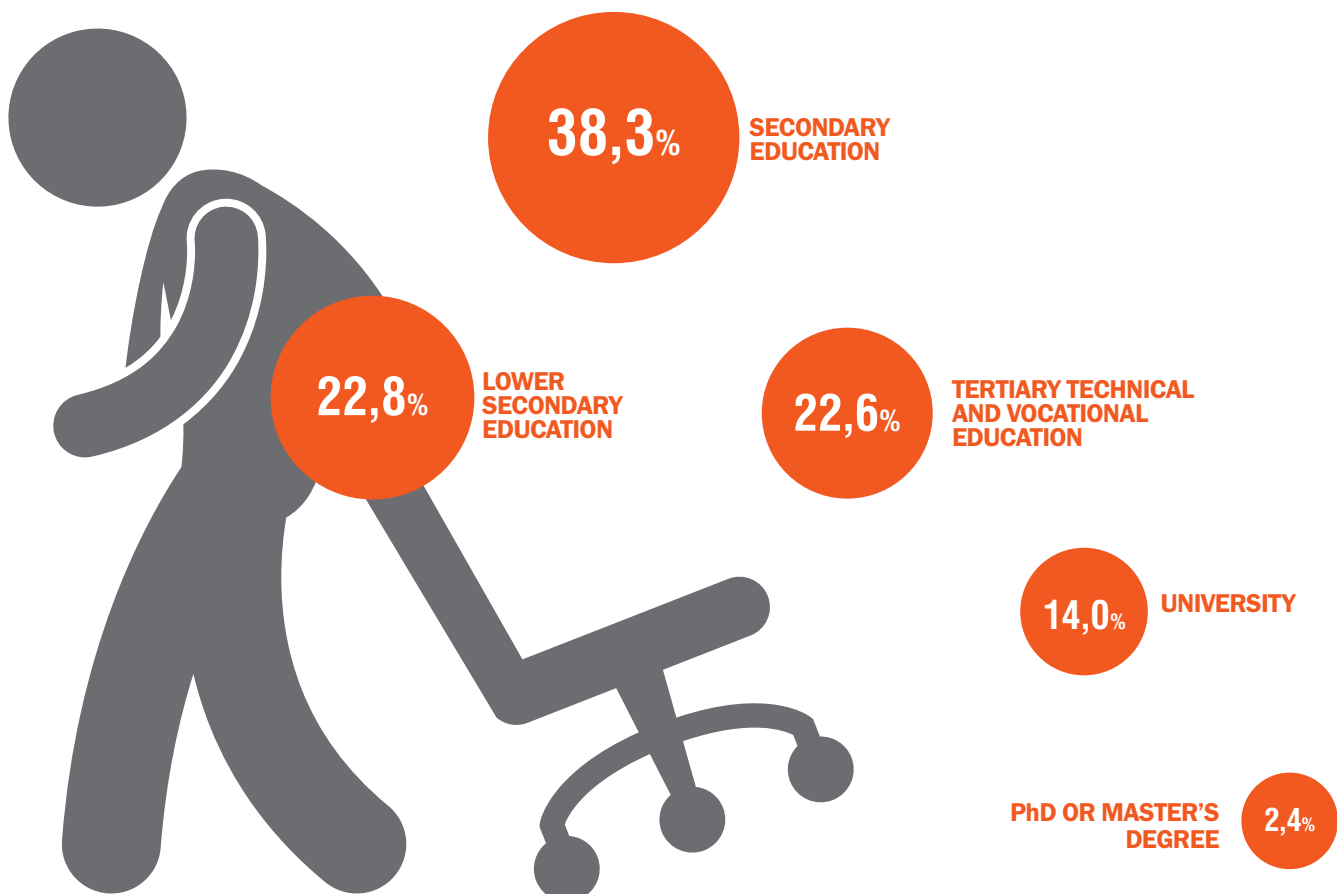
% UNEMPLOYED FOR  
MORE THAN 24 MONTHS

% SEEKING ONLY FOR  
FULL-TIME EMPLOYMENT

% ACCEPT PART-TIME  
EMPLOYMENT



## UNEMPLOYMENT BY EDUCATIONAL LEVEL



# Accidents at work, 2016

**4,739**  
**TOTAL**

2015/2016

**+6.3%**

**47**  
**FATAL**

2015/2016

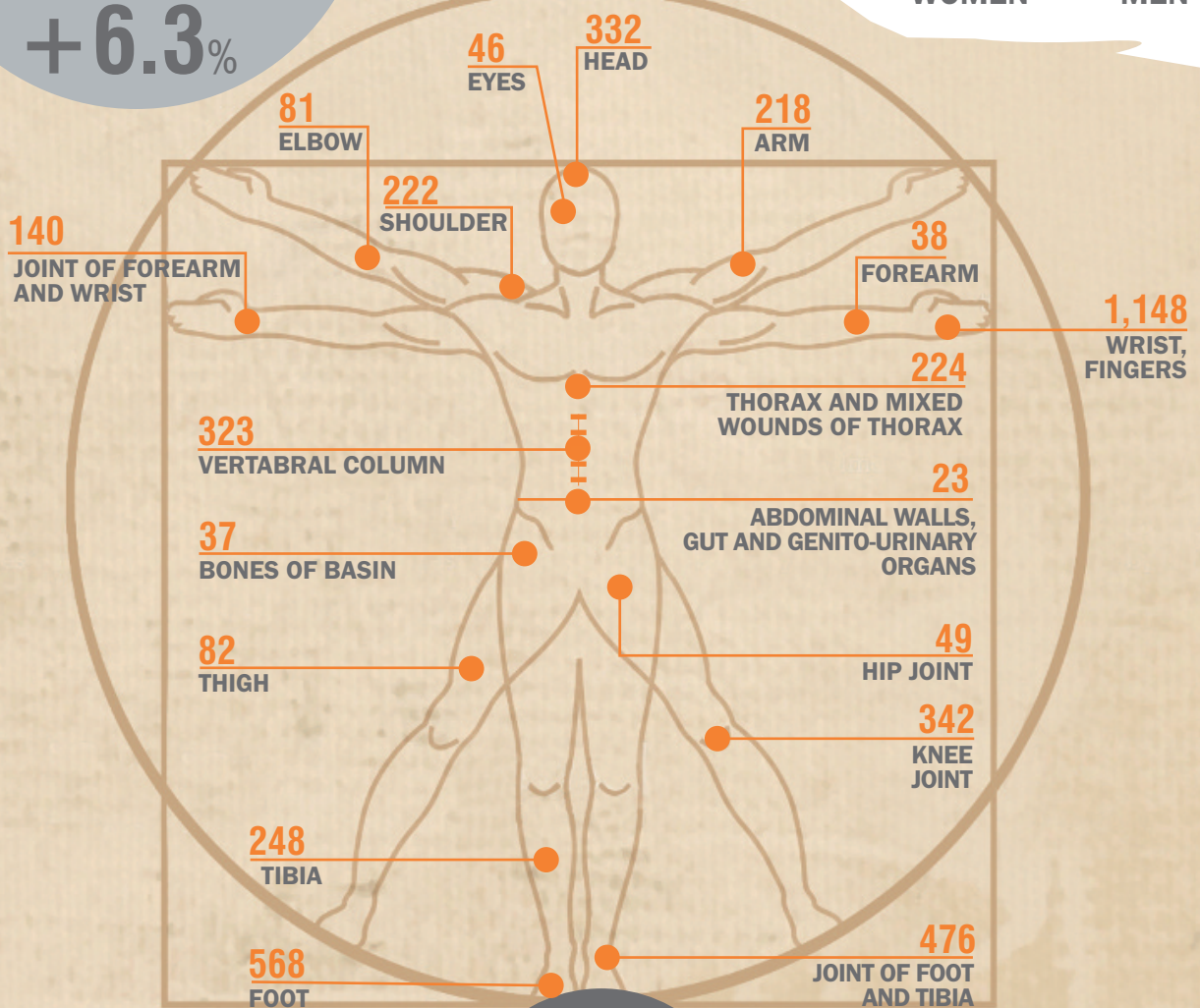
**+4.4%**



**1,307**  
**WOMEN**



**3,432**  
**MEN**



**142**  
**ENTIRE BODY**

## THE MOST DANGEROUS OCCUPATIONS



**1,219**  
ELEMENTARY  
OCCUPATIONS



**1,083**  
PLANT AND MACHINE  
OPERATORS

## ACCIDENTS BY CONTACT-MODE OF INJURY

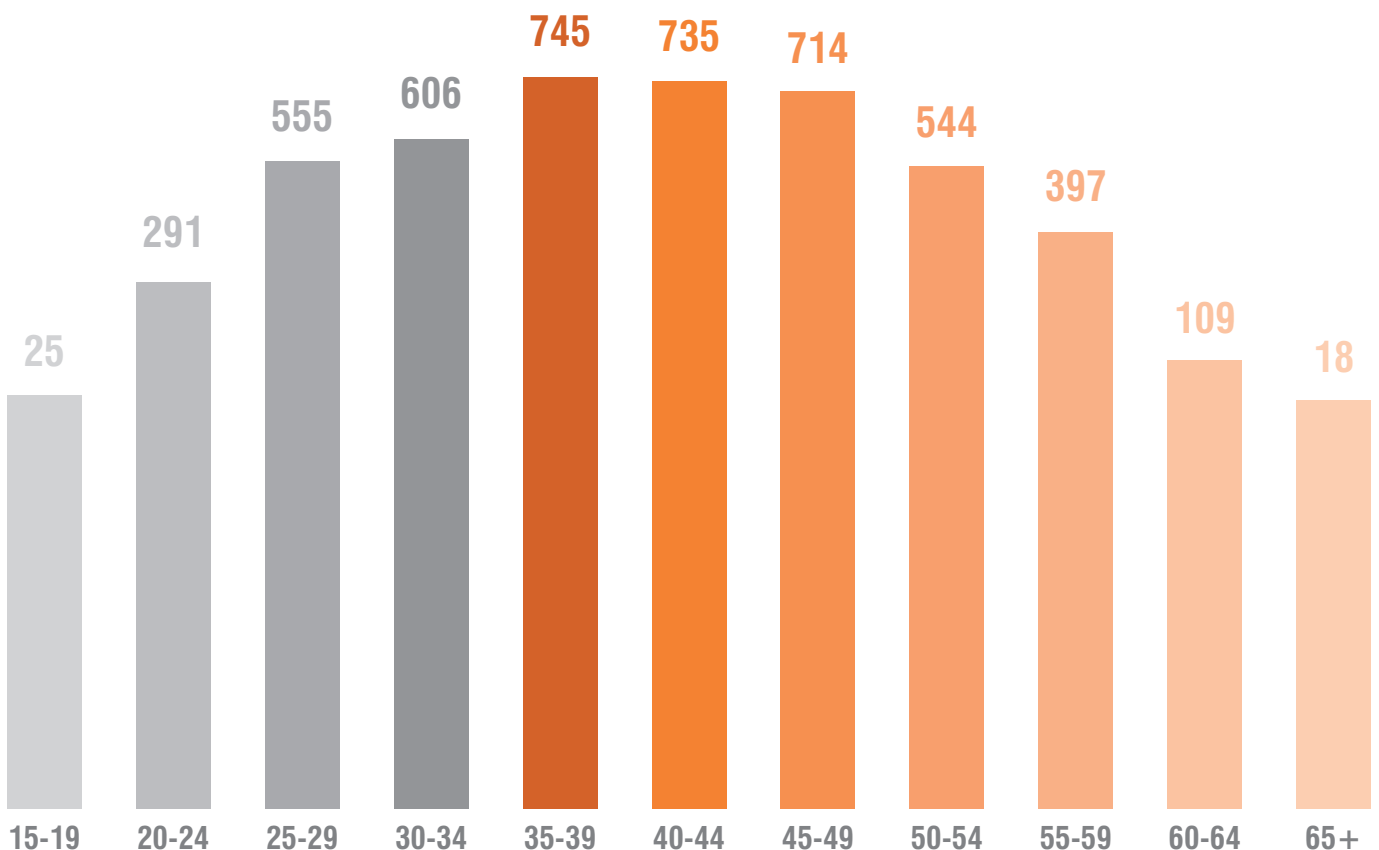


**1,778**  
IMPACT WITH OR  
AGAINST A STATIONARY OBJECT  
(the victim is in motion)



**1,027**  
STRUCK BY  
OBJECT IN MOTION

## Accidents by age group

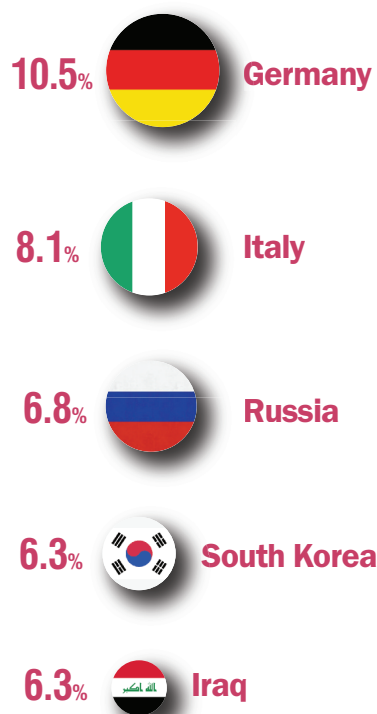


# Imports - Exports, 2017

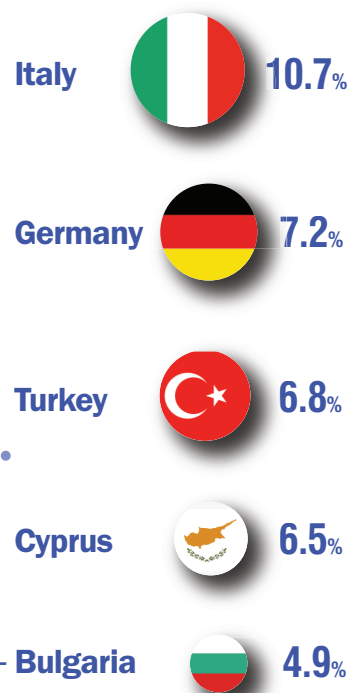
## MAIN MARKETS

% of total

### IMPORTS



### EXPORTS



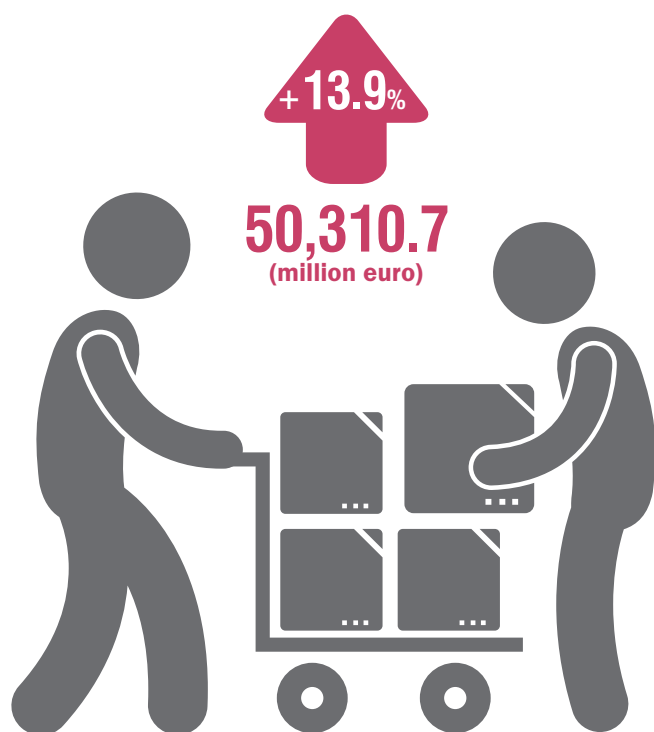
### TRADE DEFICIT

+14.4%  
(2017/2016)





## IMPORTS, MAIN PRODUCTS



**7,675**  
CRUDE OIL



**2,290**  
MEDICAMENTS  
(INCL. VETERINARY)



**3,091**  
SHIPS, BOATS, AND  
FLOATING STRUCTURES



**1,163**  
MOTOR VEHICLES



**3,059**  
PETROLEUM  
PRODUCTS



**985**  
NATURAL  
GAS

## EXPORTS, MAIN PRODUCTS



**8,495**  
PETROLEUM  
PRODUCTS



**807**  
FRUIT AND NUTS,  
FRESH OR DRIED

**Al**

**1,460**  
ALUMINIUM



**613**  
VEGETABLES, PREPARED  
OR PRESERVED



**1,130**  
MEDICAMENTS  
(INCL. VETERINARY)



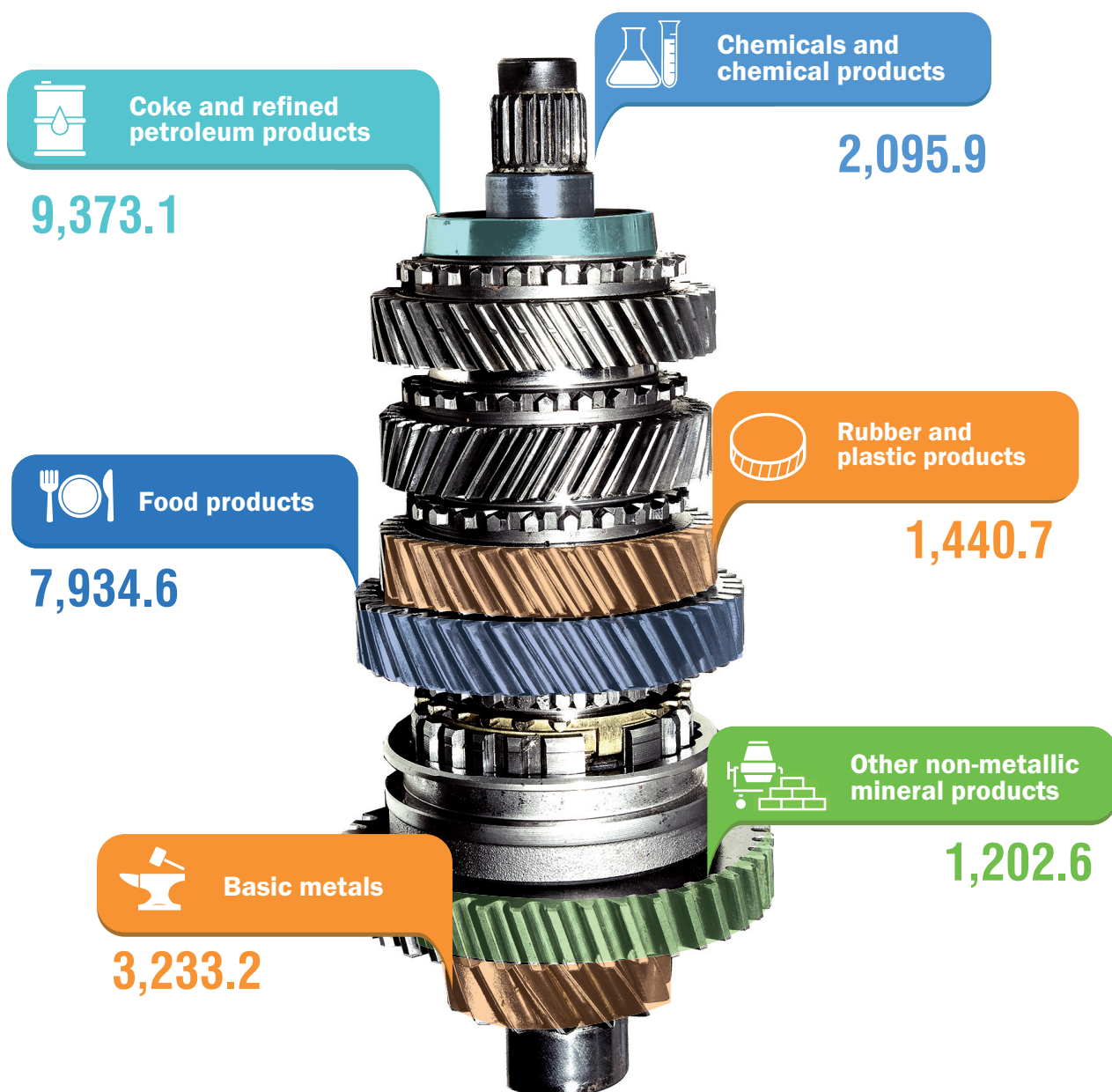
**588**  
FISH, FRESH OR  
FROZEN



# Production and sales of Industrial Products (PRODCOM), 2016

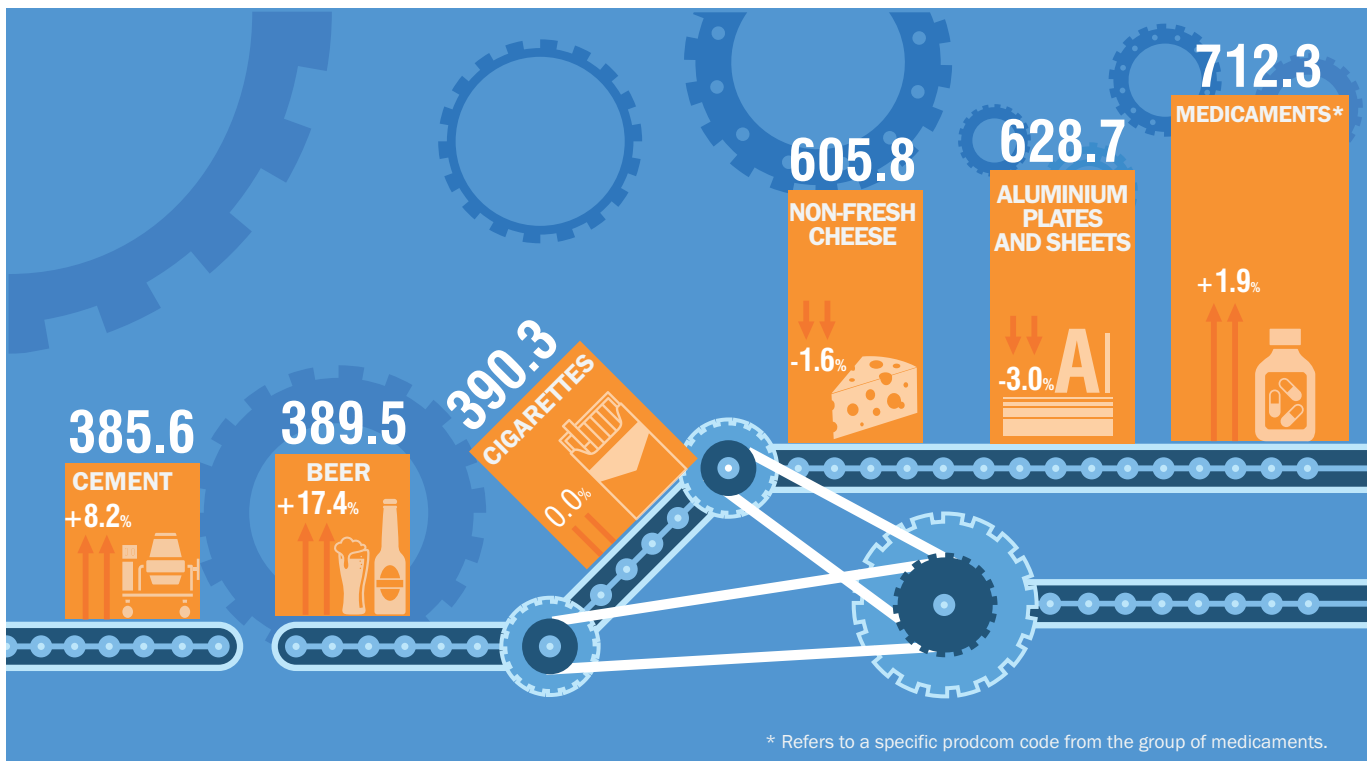
## MAIN INDUSTRIAL DIVISIONS

(in million euro)



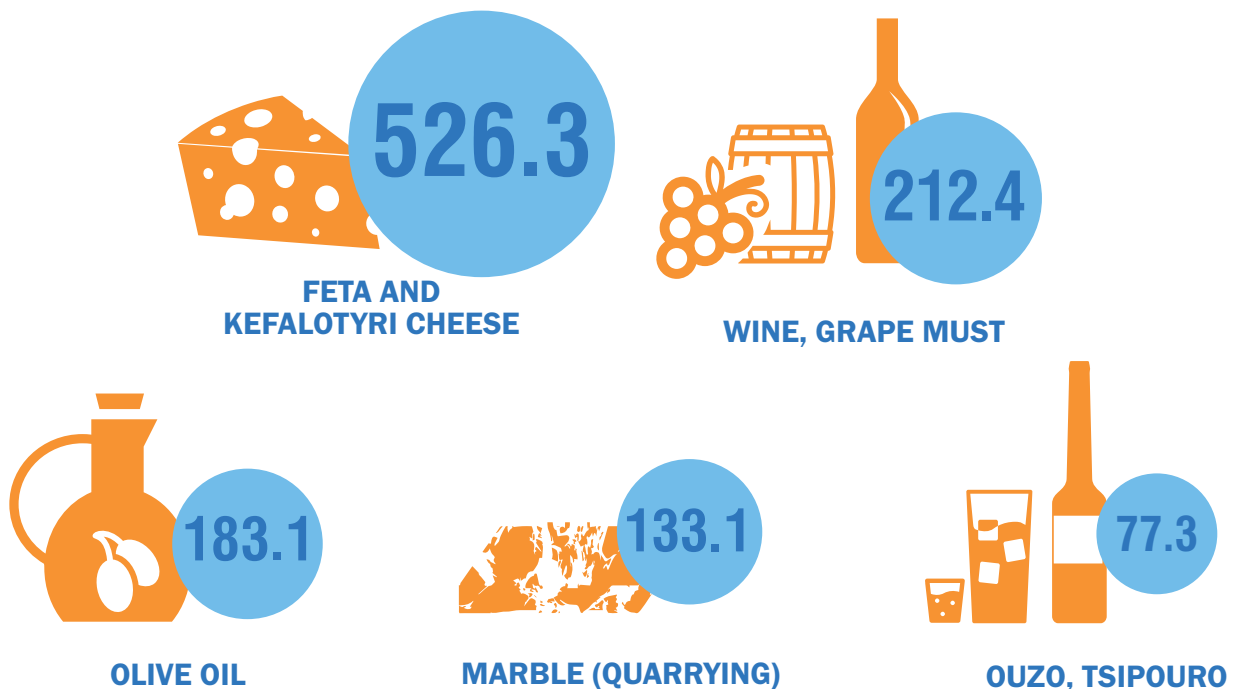
## MOST SIGNIFICANT PRODUCTS IN VALUE OF SALES

(in million euro, % change 2016/2015)



## CHARACTERISTIC PRODUCTS OF GREECE

(in million euro)



# Retail Trade, 2017

## OVERALL VOLUME INDEX

2017/2016

+1.1%



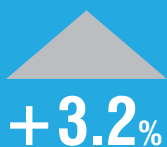
SUPERMARKETS



DEPARTMENT STORES



FOOD - BEVERAGES - TOBACCO



CLOTHING - FOOTWEAR



PHARMACEUTICAL  
PRODUCTS - COSMETICS



AUTOMOTIVE FUEL



FURNITURE - ELECTRICAL -  
HOUSEHOLD EQUIPMENT



BOOKS - STATIONERY -  
OTHER GOODS

## OVERALL VOLUME INDEX

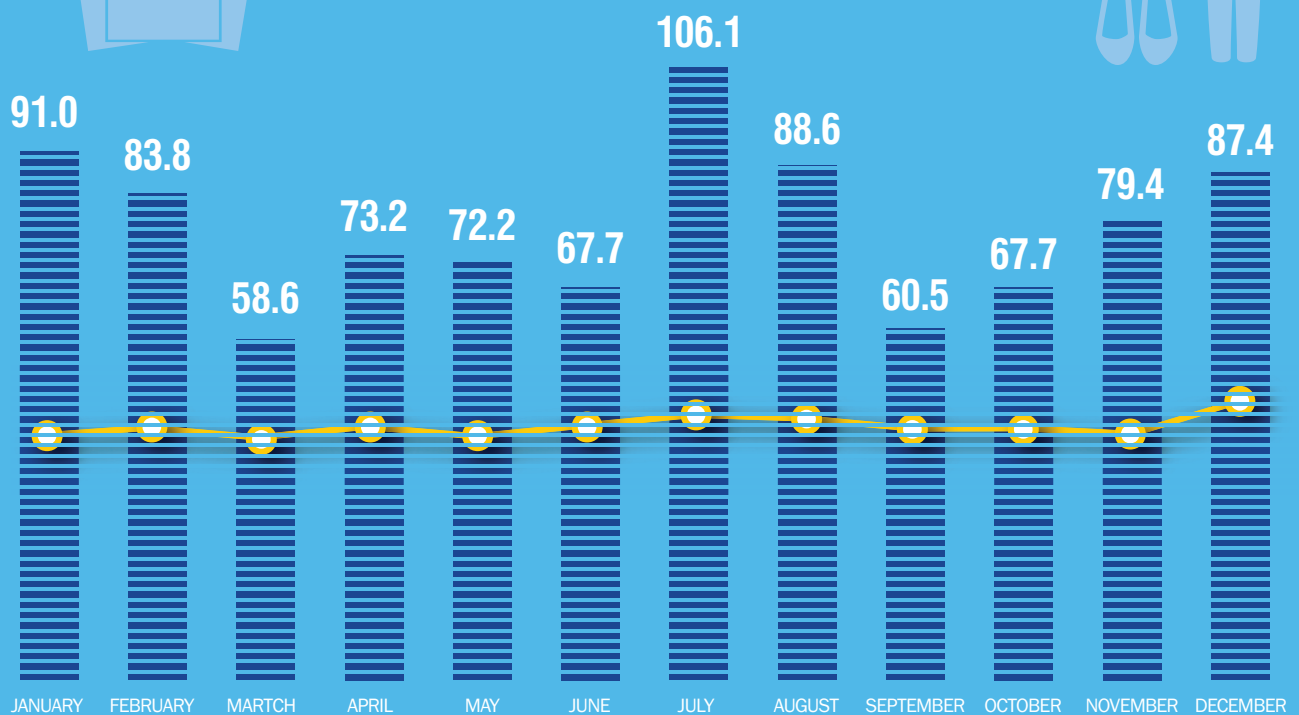
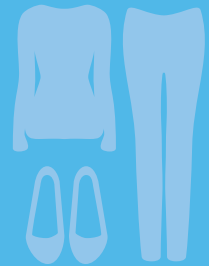
base year 2010 = 100.0



## CLOTHING - FOOTWEAR (VOLUME INDEX PER MONTH)

base year 2010 = 100.0

### OVERALL INDEX

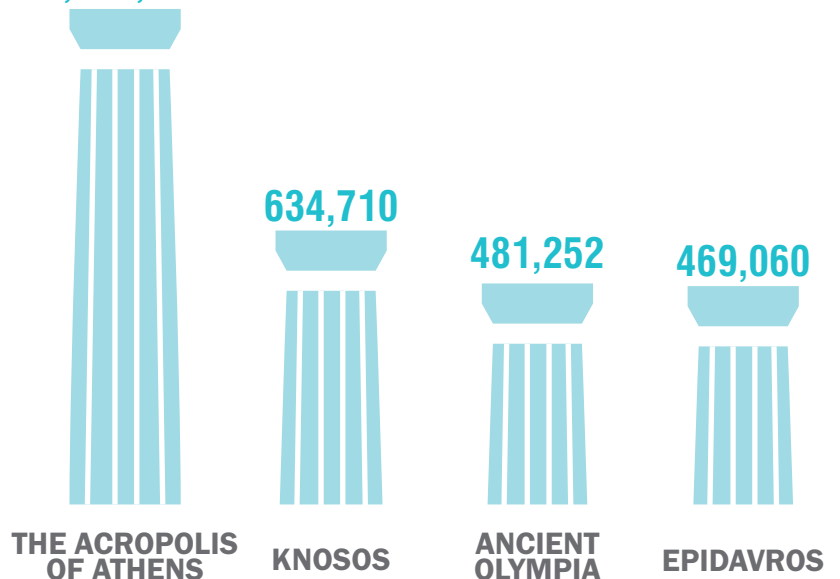
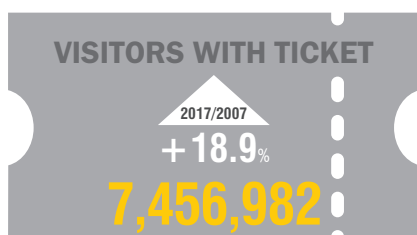
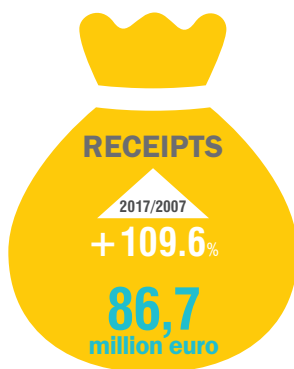


# Archaeological Sites, 2017



## NUMBER OF VISITORS BY ARCHEOLOGICAL SITE

2,766,218



# Museums, 2017



## NUMBER OF VISITORS BY MUSEUM



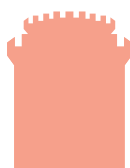
**1,593,362**  
ACROPOLIS



**545,555**  
NATIONAL ARCHAEOLOGICAL



**426,191**  
HERAKLEION



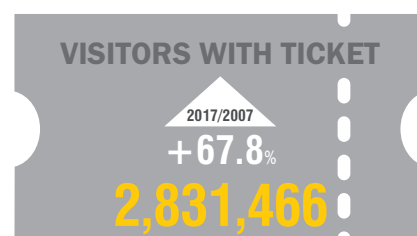
**268,149**  
WHITE TOWER



**RECEIPTS**

2017/2007  
**+90.6%**

**16,2**  
million euro



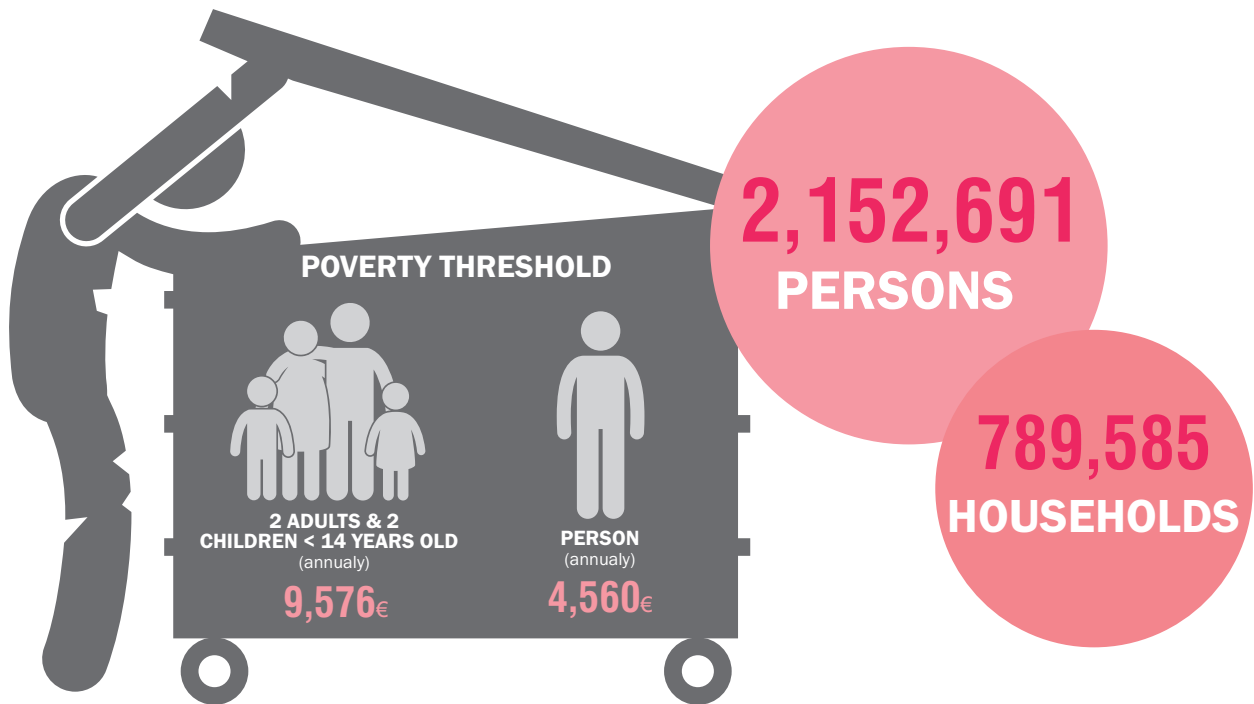
**VISITORS WITH TICKET**

2017/2007  
**+67.8%**

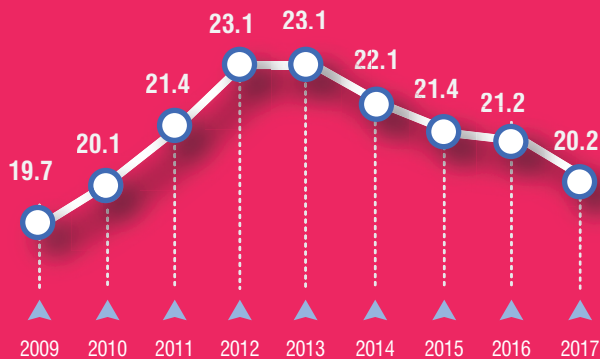
**2,831,466**

# Risk of Poverty, 2017

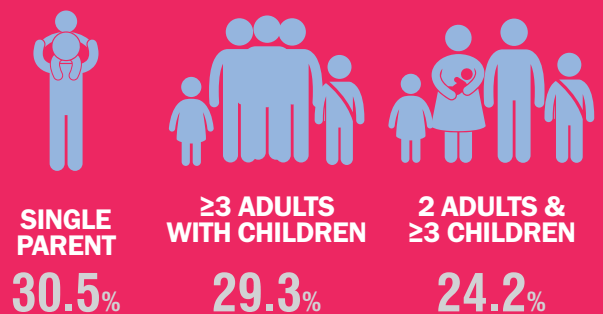
income <60% of the national median equivalised disposable income



## % Population at risk of poverty



## % Households at high risk of poverty

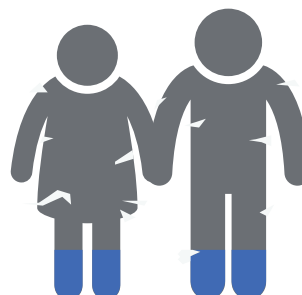


## MATERIAL DEPRIVATION, 2017

lacking at least 4 items in the economic strain and durables dimension



### POPULATION (18-64)

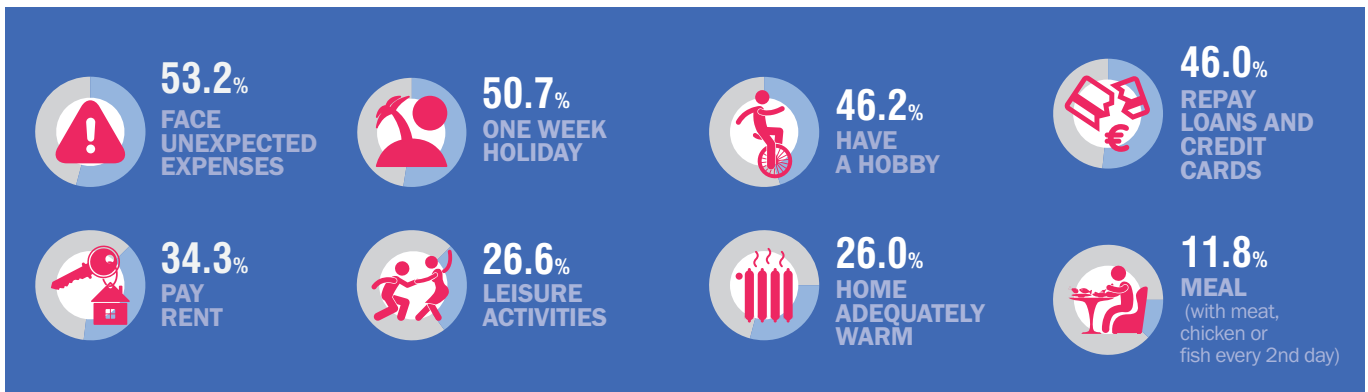


### CHILDREN (0-17)

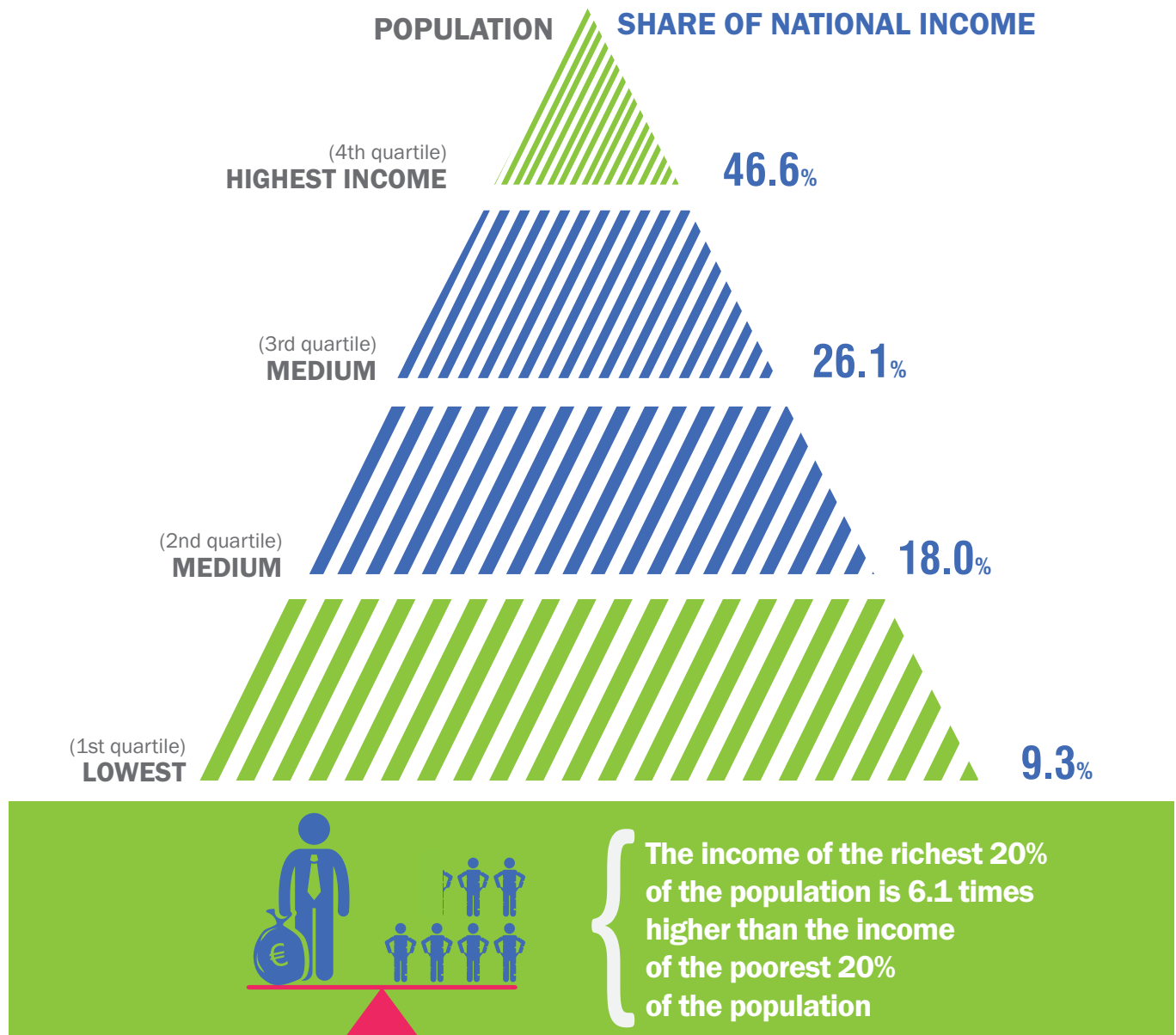




## % POPULATION WITH DIFFICULTIES TO AFFORD OR DEPRIVED OF



## INCOME INEQUALITY, 2017

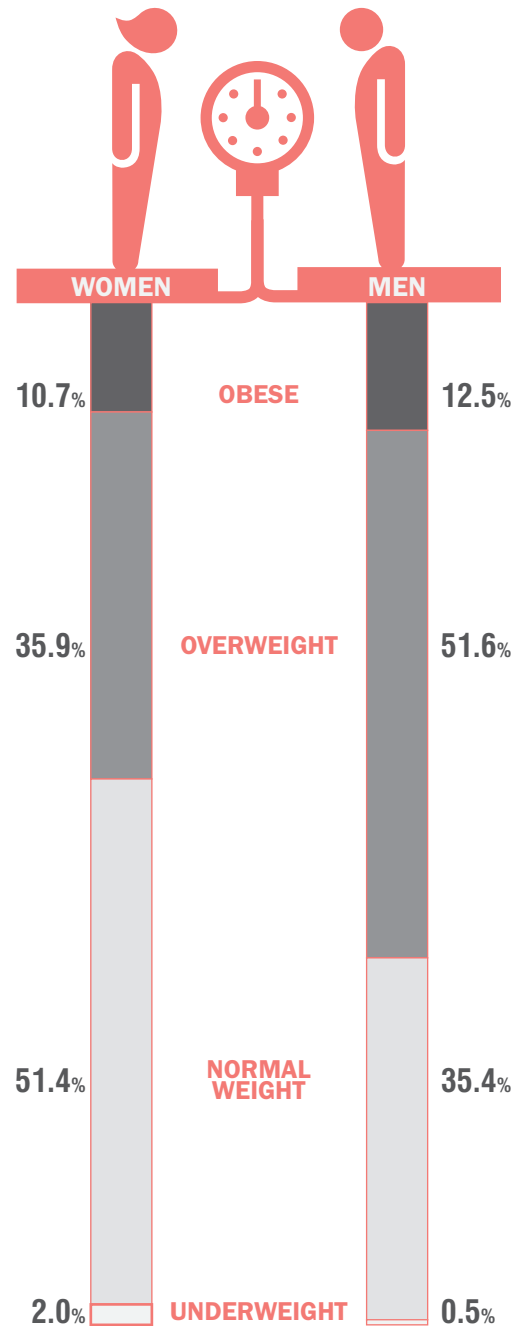


# Health, 2017

## % GENERAL HEALTH STATUS



## BODY MASS INDEX



## MEDICAL EXAMINATION OR TREATMENT

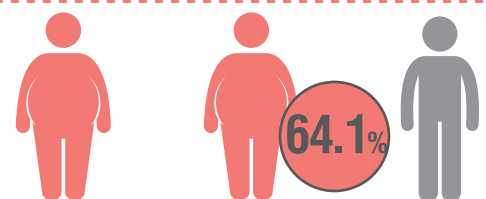


### UNMET NEED FOR MEDICAL EXAMINATION OR TREATMENT



IN-PATIENT HOSPITAL CARE

9.3%



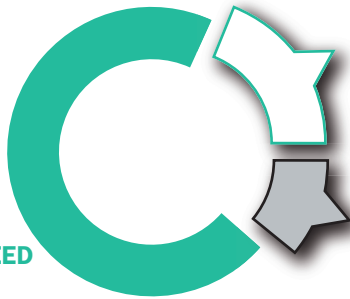
MEN OVERWEIGHT/OBESE

64.1%



## DENTAL / ORAL / ORTHODONTIC EXAMINATION OR TREATMENT

**70.1%**  
DID NOT NEED



**18.8%**  
NEEDED AND  
GOT

**11.1%**  
NEEDED BUT  
DID NOT GET

### PERCENTAGE DISTRIBUTION OF POPULATION UNMET NEED FOR DENTAL EXAMINATION TREATMENT



## PHYSICAL - SENSORY FUNCTIONS



DIFFICULTY IN SEEING



DIFFICULTY IN HEARING



DIFFICULTY IN GETTING AROUND ON FOOT



DIFFICULTY IN REMEMBERING / CONCENTRATING



## PHYSICAL ACTIVITY AT WORK AND EVERYDAY LIFE



**53.3%**  
**MOSTLY  
WALKING**  
(moderate physical  
effort)



**25.5%**  
**MOSTLY  
SITTING**

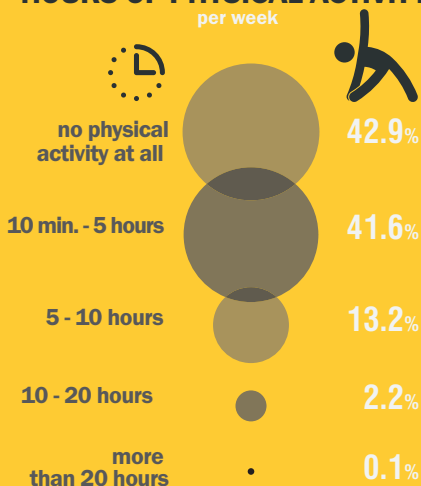


**11.3%**  
**MOSTLY HEAVY  
LABOUR**  
(physically  
demanding  
work)

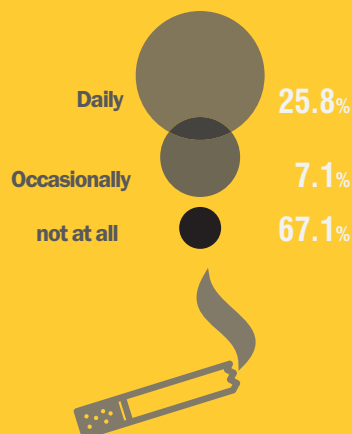


**9.9%**  
**MOSTLY  
STANDING**

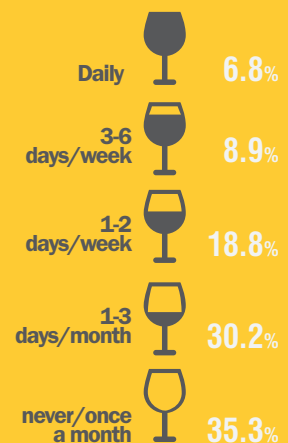
### HOURS OF PHYSICAL ACTIVITY per week



### FREQUENCY OF SMOKING



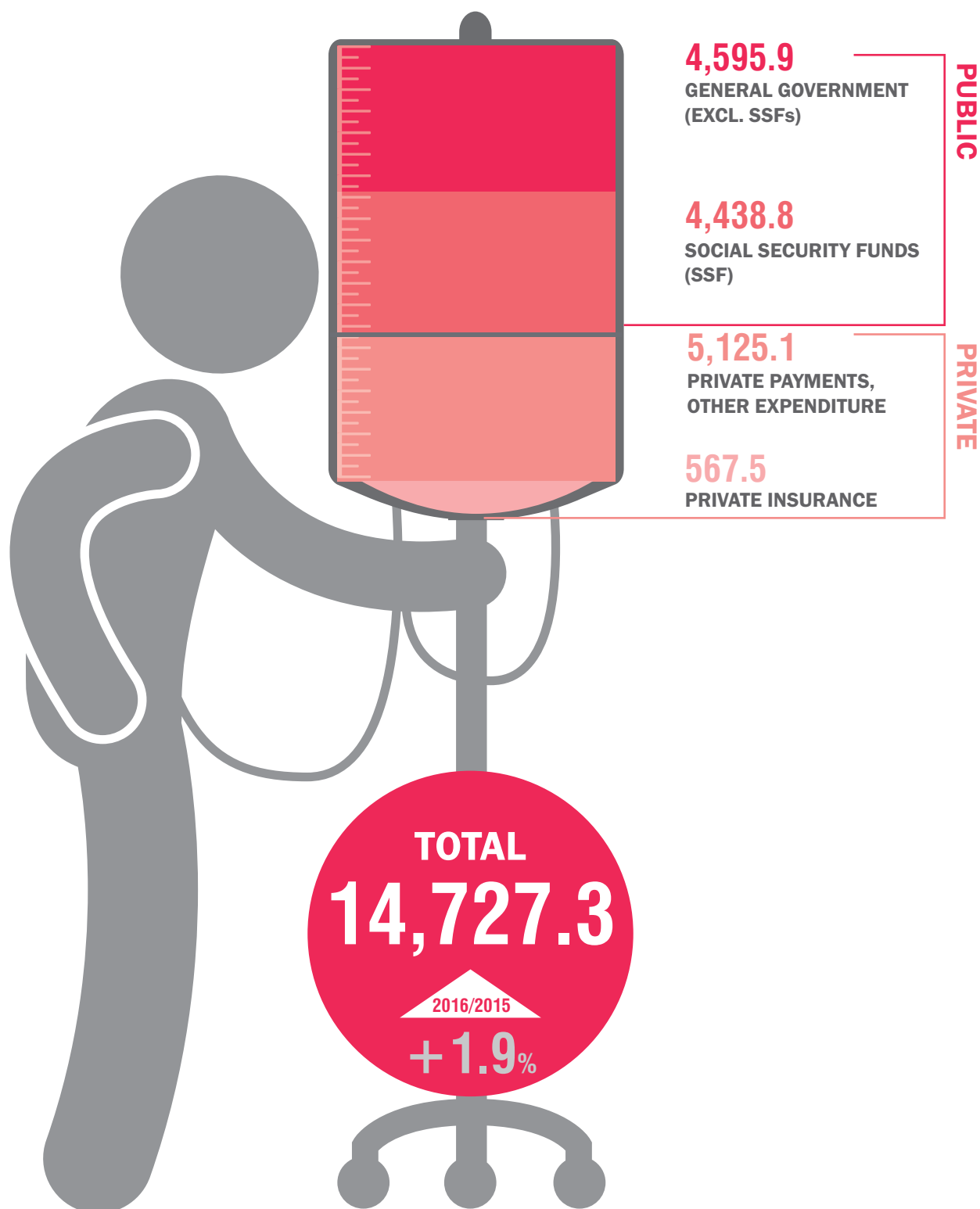
### ALCOHOL CONSUMPTION



# SYSTEM OF HEALTH ACCOUNTS (SHA), 2016

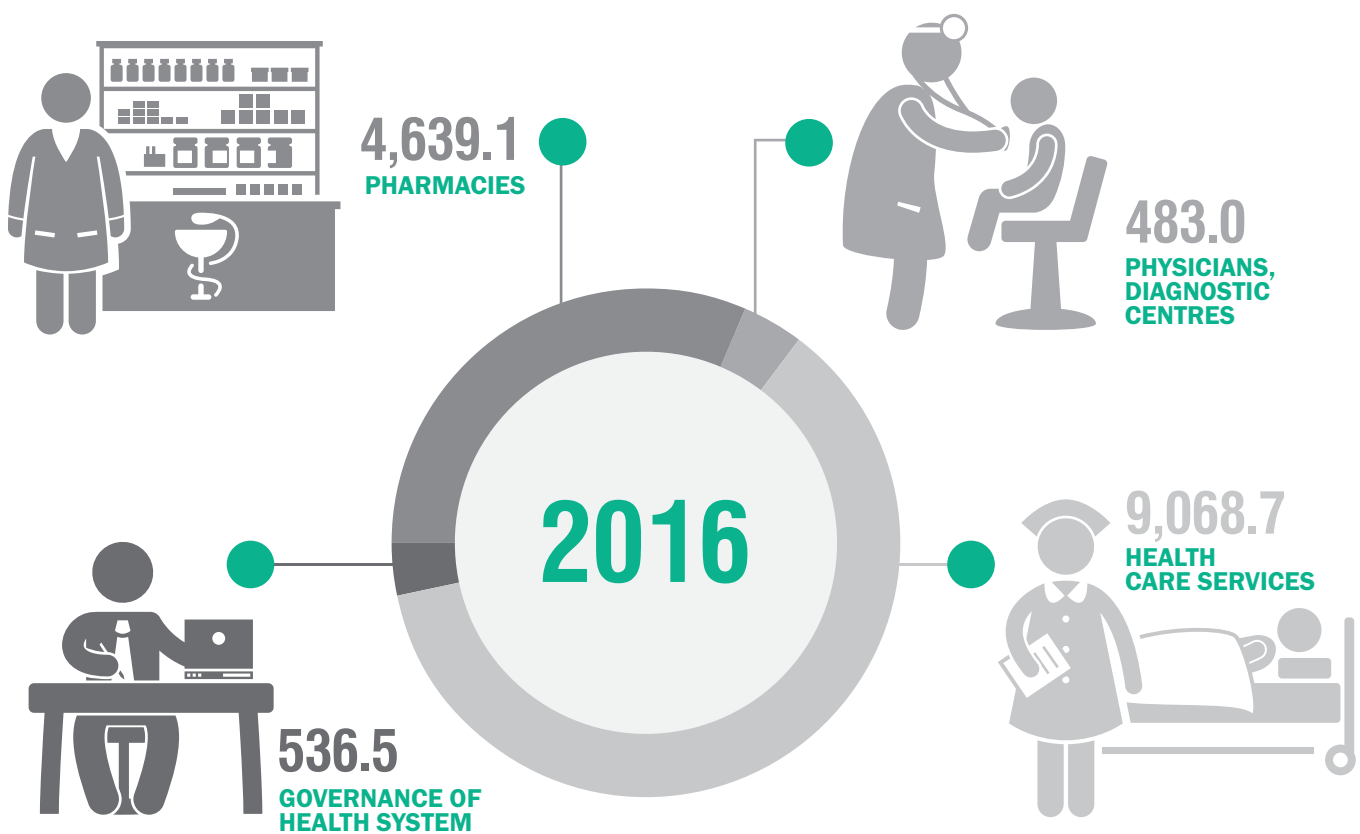
## FINANCING AGENCIES

(in million euro)



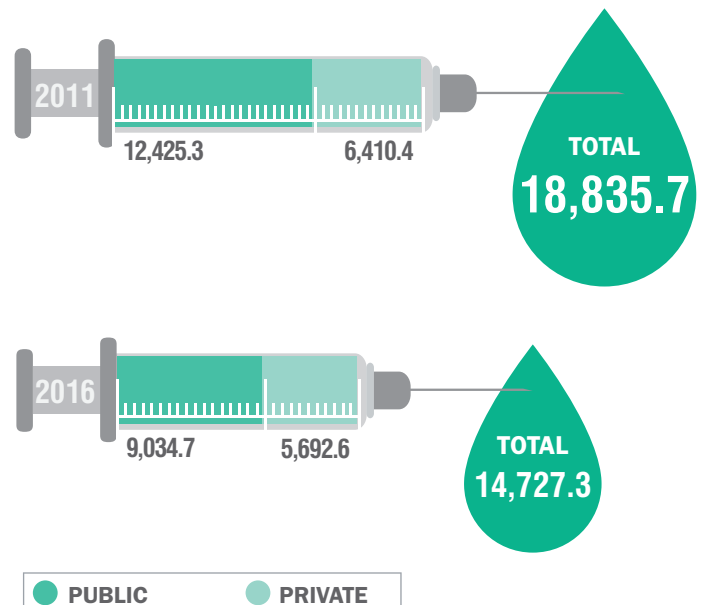
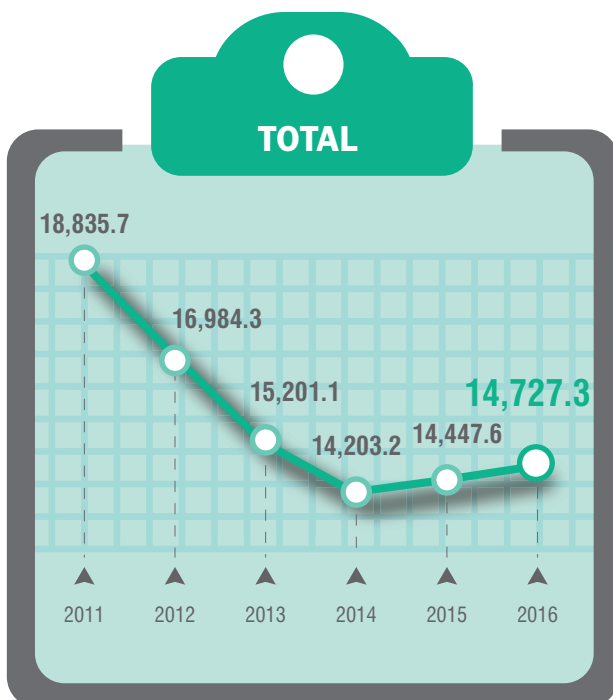
## HEALTH EXPENDITURE

(in million euro)



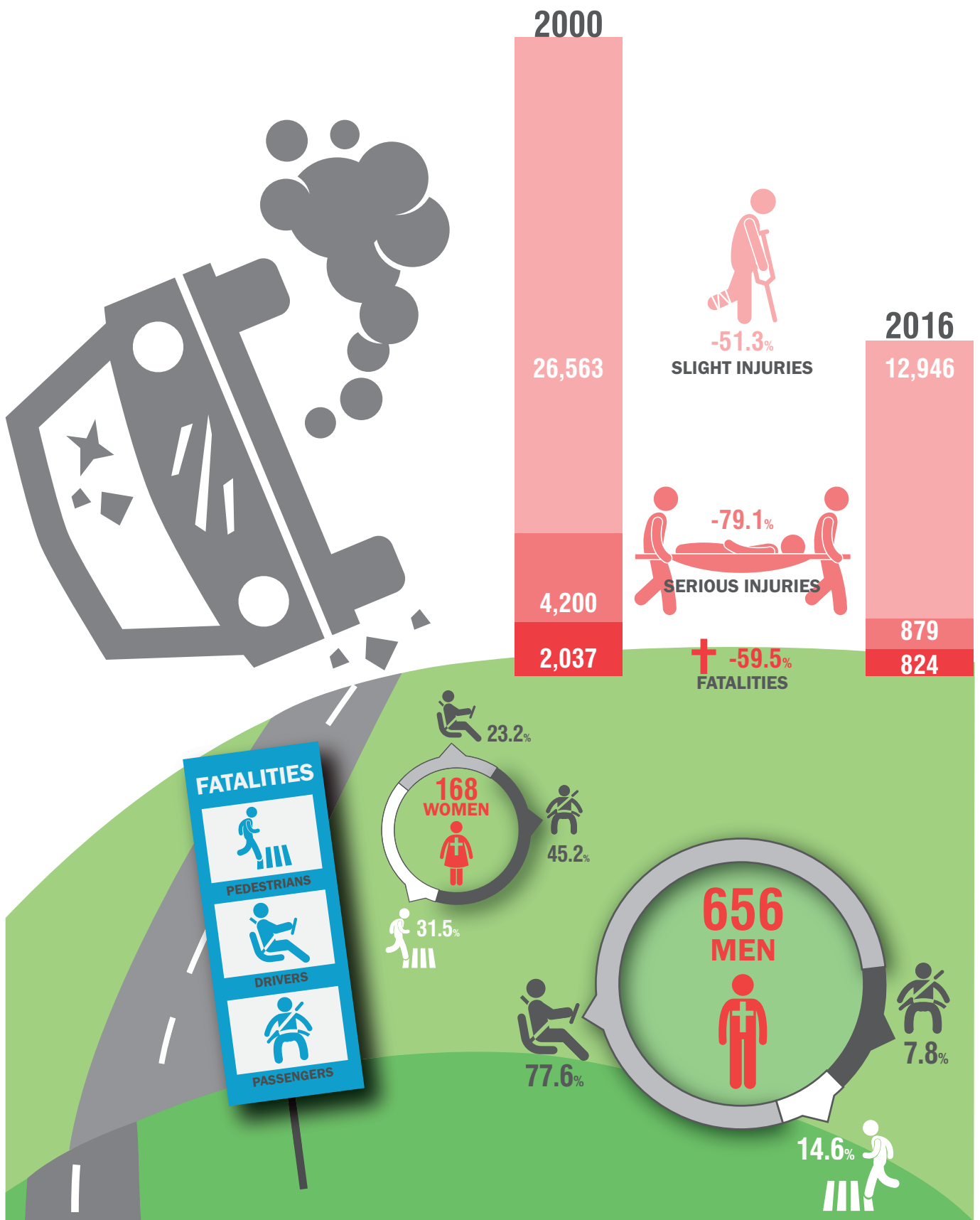
## EXPENDITURE BY AGENCY, 2011-2016

(in million euro)

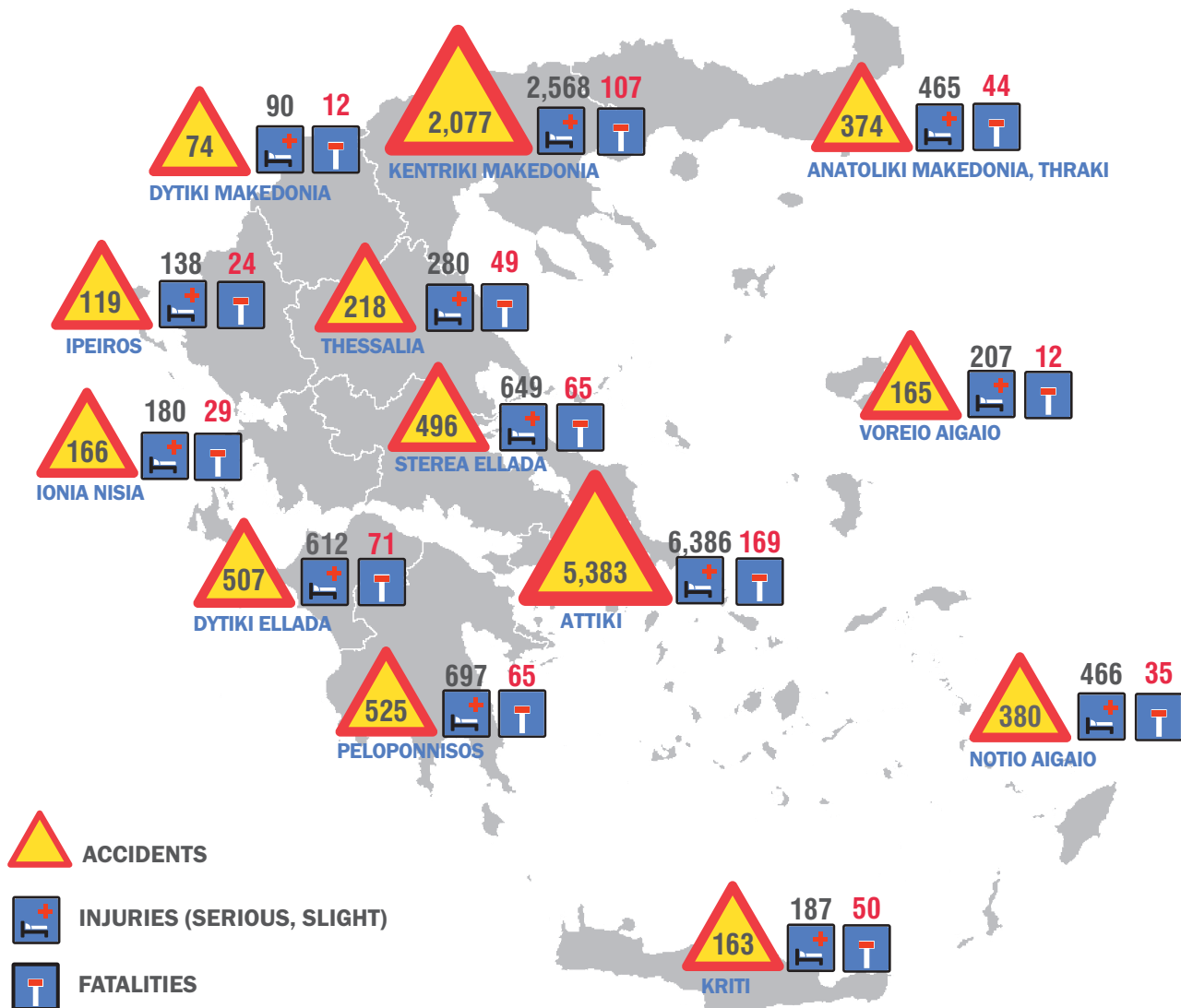


● PUBLIC ● PRIVATE

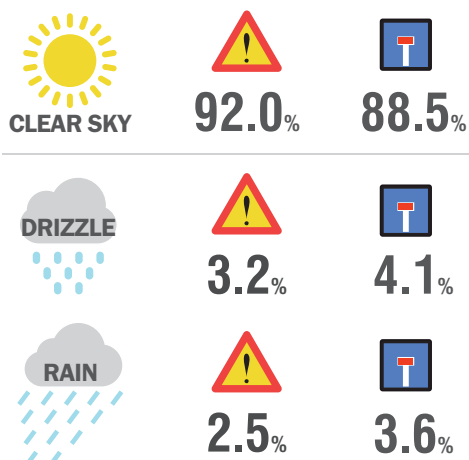
# Road accidents, 2016



# ROAD ACCIDENTS AND CASUALTIES BY NUTS 2 REGION, 2107



## WEATHER CONDITIONS

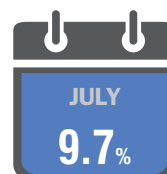
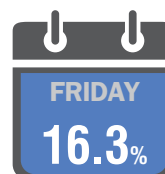


## THE MOST DANGEROUS HOURS, DAYS, MONTHS

### FATALITIES

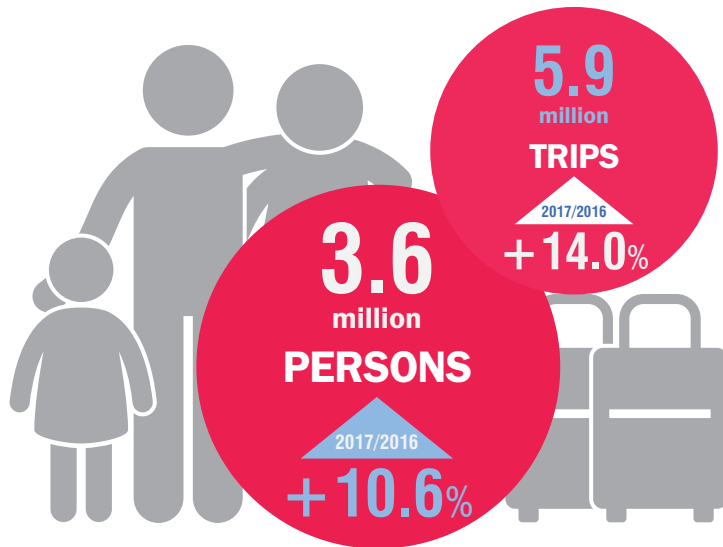


### ACCIDENTS



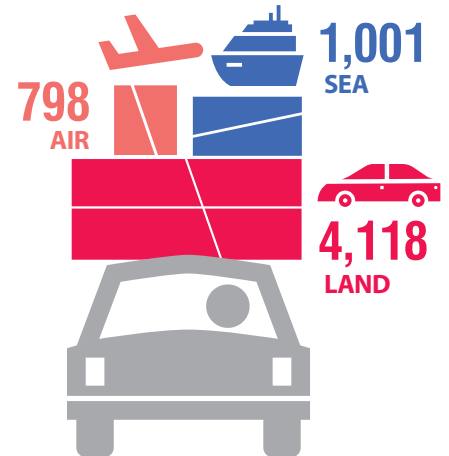
# Personal trips made by resident tourists, 2017

(Aged 15 and over)



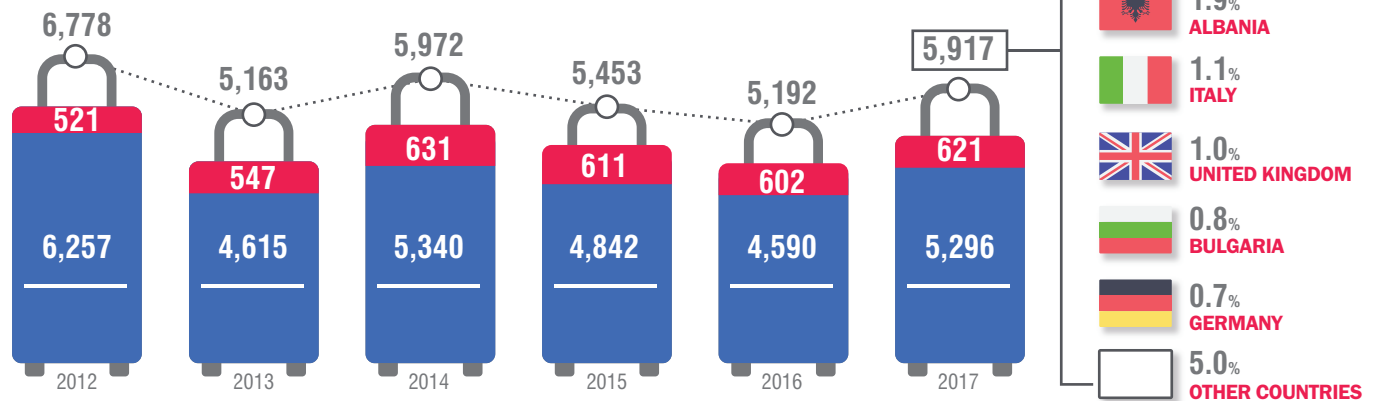
## BY MODE OF TRANSPORT

(in thousands)



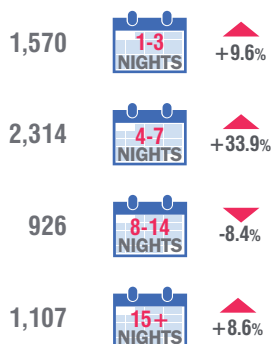
## BY TRIP DESTINATION (in thousands)

DOMESTIC OUTBOUND TOTAL



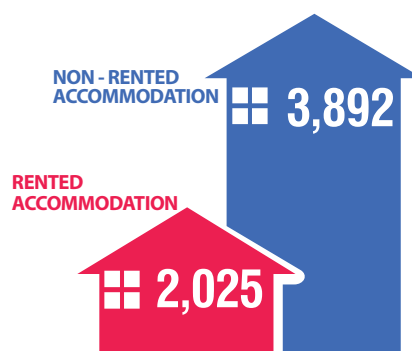
## BY DURATION OF TRIP

(in thousands)



## BY TYPE OF ACCOMMODATION

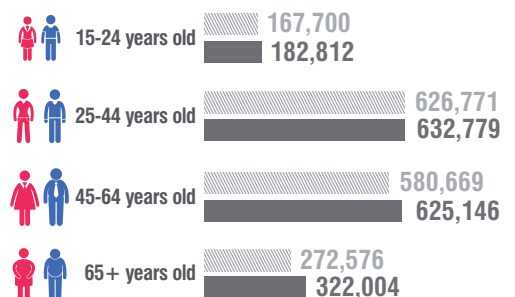
(in thousands)



## EXPENDITURE BY AGE GROUP

(in thousand euro)

2016 2017

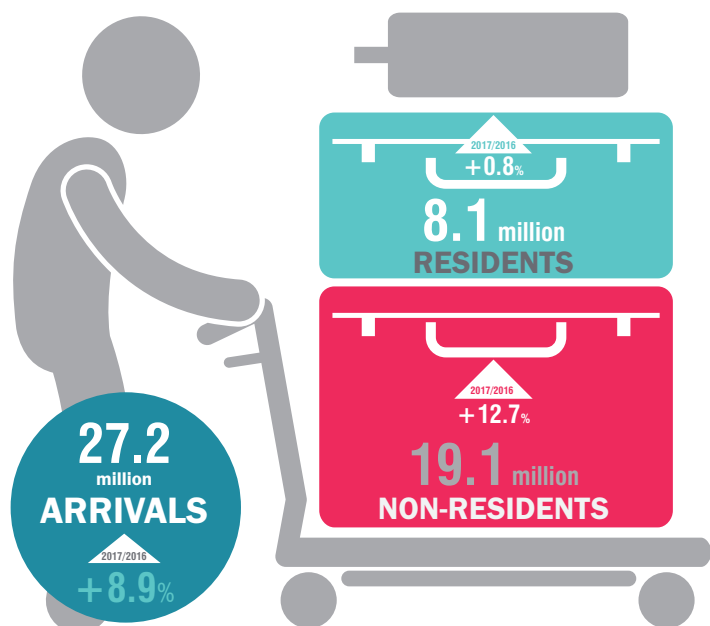




# Arrivals and nights spent, 2017

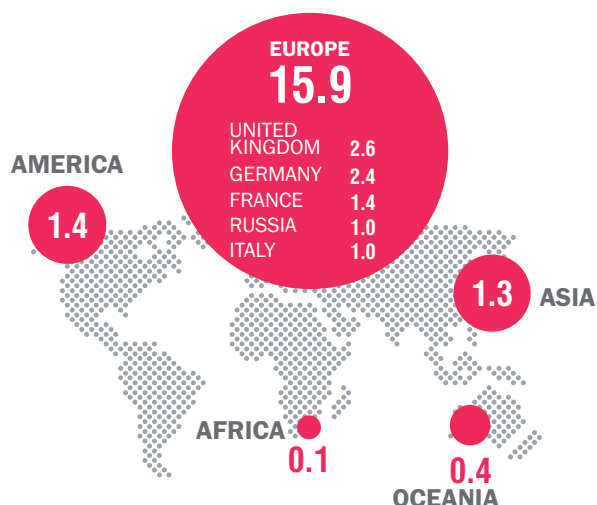
(Hotels, short-stay accommodation establishments and tourist campsites)

## ARRIVALS AT TOURIST ACCOMMODATION ESTABLISHMENTS

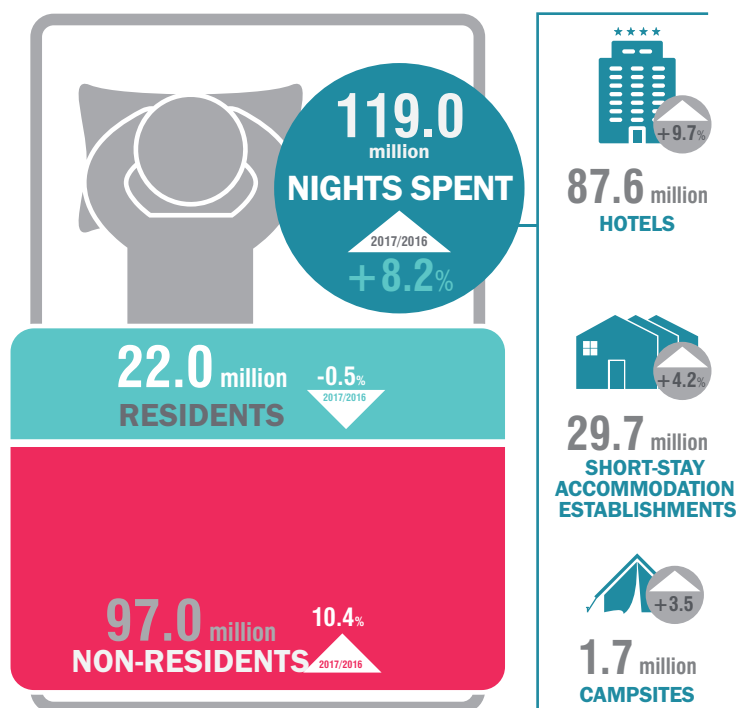


### NON-RESIDENTS BY PLACE OF RESIDENCE

(in millions)



## NIGHTS SPENT



### BY NUTS 2 REGIONS

(in millions)

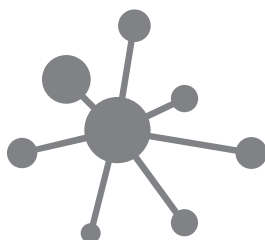








[www.statistics.gr](http://www.statistics.gr)



@statisticsGR

**LinkedIn**



infographic  
**ELSTAT**