



PRESS RELEASE

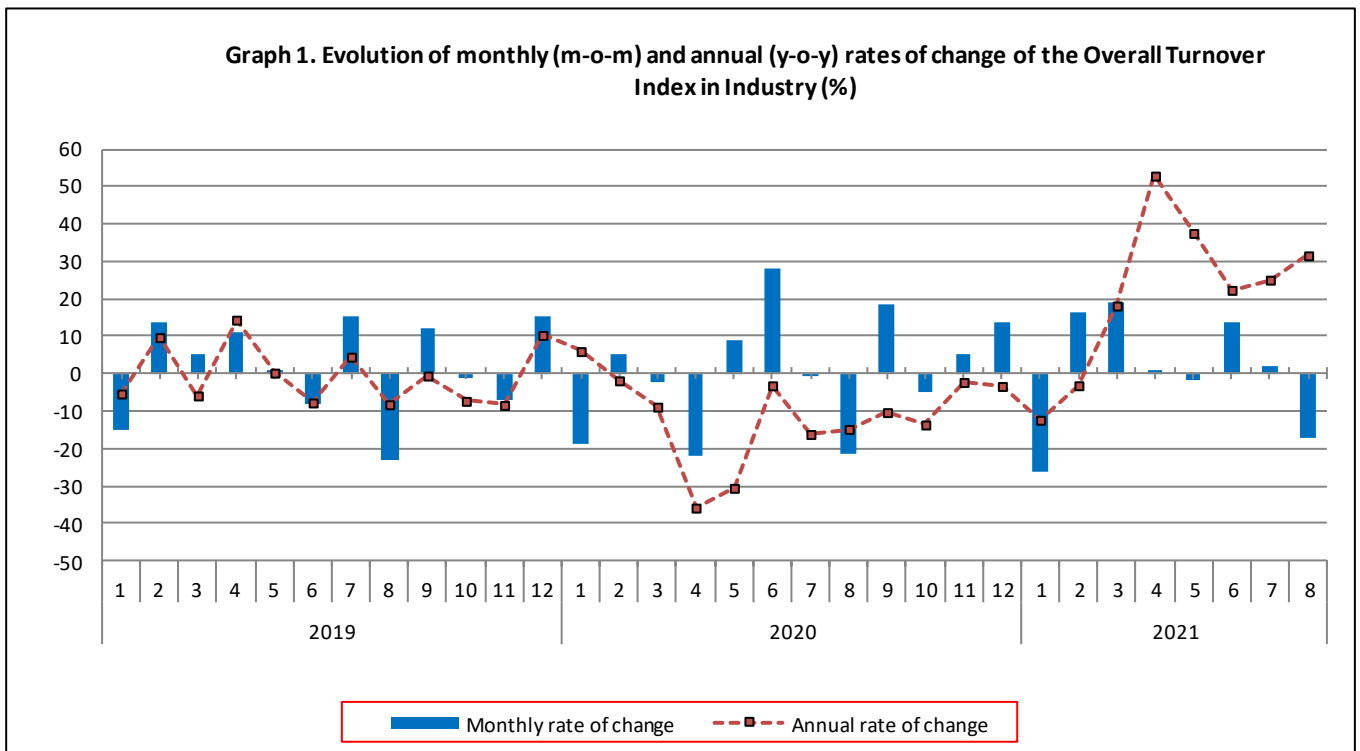
TURNOVER INDEX IN INDUSTRY: August 2021, y-o-y increase of 31.6%

The Hellenic Statistical Authority announces the Turnover Index in Industry with base year 2015=100.0 for August 2021, the evolution of which on the basis of provisional data, is as follows:

The Overall Turnover Index in Industry (both Domestic and Non-Domestic Market) in August 2021 recorded an increase of 31.6% compared with the corresponding index of August 2020. The Overall Turnover Index in Industry in August 2020 decreased by 14.8% compared with the corresponding index in August 2019 (Table 1).

The Overall Turnover Index in Industry in August 2021, compared with July 2021, recorded a decrease of 17.1% (Table 6).

The average Overall Turnover Index in Industry for the 12-month period from September 2020 to August 2021 increased by 10.1%, compared with the corresponding index of the 12-month period from September 2019 to August 2020. The average Overall Turnover Index in Industry for the 12-month period from September 2019 to August 2020 decreased by 9.9% compared with the corresponding index of the 12-month period from September 2018 to August 2019 (Table 13).



Information for methodological issues:

Division of Business Statistics
Section of Manufacture-Construction Indices and Industrial Products
Head of the Section : Diamantaki Aikaterini
Tel: +30 213 135 2056
E-mail: a.diamantaki@statistics.gr

Information for data provision:

Tel: +30 213 135 2022, 2308, 2310
E-mail: data.dissem@statistics.gr

Evolution of the Overall Turnover Index in Industry in August 2021

I. Annual changes of the Overall Turnover Index in Industry: August 2021/ August 2020

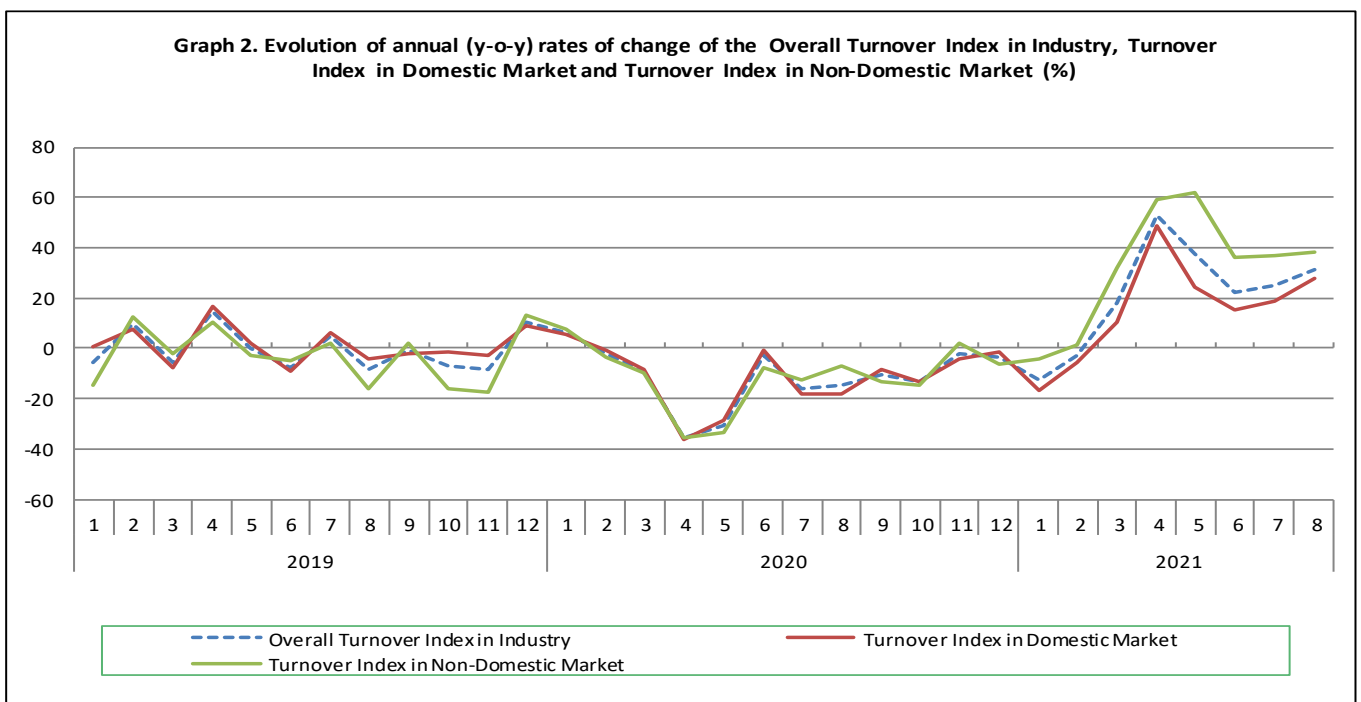
The 31.6% increase in the Overall Turnover Index in Industry in August 2021, compared with the corresponding index in August 2020, was due to the following:

1. Changes in the sub-indices of the industrial sections (Table 1):

- The Turnover Index in Manufacturing increased by 31.8%. The increase was mainly the result of the annual changes of the sub-indices in the following 2-digit divisions: coke and refined petroleum products, beverages, basic metals, fabricated metal products, except machinery and equipment.
- The Turnover Index in Mining and quarrying increased by 13.4%. The increase was the result of the annual changes of the sub-indices in the following 2-digit divisions: mining of coal and lignite - extraction of crude petroleum and natural gas - mining support service activities, other mining and quarrying products.

2. Changes in the sub-indices in Domestic and Non-Domestic Markets:

- The Turnover Index in Industry in Non-Domestic Market increased by 38.1% (Table 3).
- The Turnover Index in Industry in Domestic Market increased by 28.2% (Table 2).



II. Annual changes of the Turnover Index in Industry in Domestic Market: August 2021/ August 2020

The 28.2% increase of the Turnover Index in Industry in Domestic Market in August 2021, compared with August 2020, is due to the annual changes in the sub-indices of the following industrial sections (Table 2):

- The Turnover Index in Manufacturing increased by 28.5%. The increase was mainly the result of the annual changes of the sub-indices in the following 2-digit divisions: coke and refined petroleum products, basic pharmaceutical products and pharmaceutical preparations, beverages, basic metals.
- The Turnover Index in Mining and quarrying decreased by 14.1%. The decrease was the result of the annual changes of the sub-indices in the following 2-digit divisions: other mining and quarrying products, mining of metal ores.

III. Annual changes of the Turnover Index in Industry in Non-Domestic Market: August 2021/ August 2020

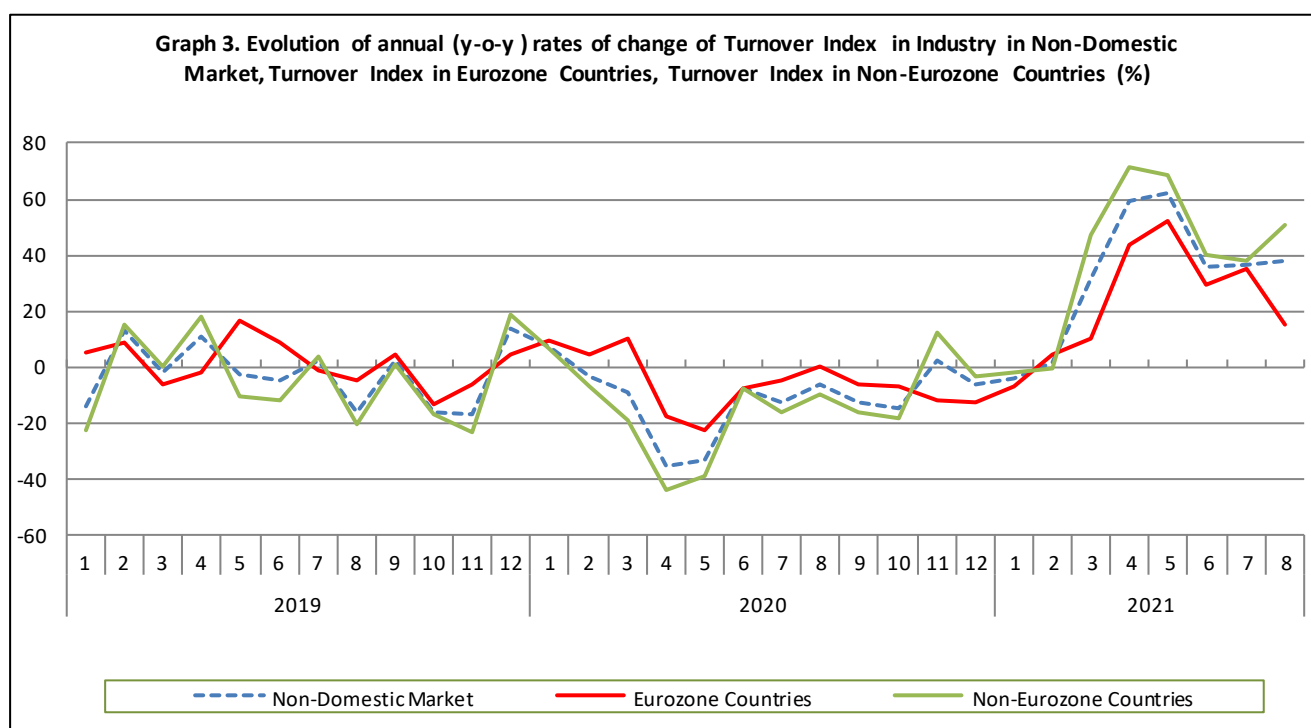
The 38.1% increase of the Turnover Index in Industry in Non-Domestic Market in August 2021, compared with August 2020, was due to the following:

1. Changes in the sub-indices of the industrial sections (Table 3):

- The Turnover Index in Manufacturing increased by 38.3%. The increase was mainly the result of the annual changes of the sub-indices in the following 2-digit divisions: electrical equipment, coke and refined petroleum products, fabricated metal products, except machinery and equipment, basic metals.
- The Turnover Index in Mining and quarrying increased by 32.6%. The increase was the result of the annual changes of the sub-indices in the following 2-digit divisions: mining of coal and lignite - extraction of crude petroleum and natural gas - mining support service activities, other mining and quarrying products.

2. Changes in the sub-indices in Eurozone and Non-Eurozone countries:

- The Turnover Index in Industry in Non-Eurozone countries increased by 50.9% (Table 5).
- The Turnover Index in Industry in Eurozone countries increased by 15.1% (Table 4).



IV. Monthly changes of the Overall Turnover Index in Industry: August 2021/ July 2021

The 17.1% decrease of the Overall Turnover Index in Industry in August 2021, compared with the corresponding index in July 2021, was due to the following:

1. Changes in the sub-indices of industrial sections (Table 6):

- The Turnover Index in Manufacturing decreased by 17.2%.
- The Turnover Index in Mining and quarrying decreased by 4.1%.

2. Changes in the sub-indices in Domestic and Non-Domestic Market:

- The Turnover Index in Industry in Non-Domestic Market decreased by 22.9% (Table 8).
- The Turnover Index in Industry in Domestic Market decreased by 13.5% (Table 7).

Table 1. Annual rates of change of the Turnover Index in Industry: Total Market
Base year: 2015=100.0

Code	Division	Weights	August			Rate of change (%)	
			2021*	2020	2019	2021/2020	2020/2019
OVERALL INDEX			115.26	87.57	102.75	31.6	-14.8
B	MINING AND QUARRYING	100.00	93.12	82.09	75.42	13.4	8.8
05-06-09	Mining of coal and lignite - Extraction of crude petroleum and natural gas - Mining support service activities	21.19	108.46	19.14	25.52	466.5	-25.0
07	Mining of metal ores	17.56	95.49	187.59	108.95	-49.1	72.2
08	Other mining and quarrying products	61.25	87.13	73.62	83.07	18.4	-11.4
C	MANUFACTURING	100.00	115.56	87.64	103.13	31.8	-15.0
10	Food	23.39	111.42	97.62	105.95	14.1	-7.9
11	Beverages	3.57	174.20	128.23	154.00	35.8	-16.7
12	Tobacco products	1.19	127.12	121.58	111.40	4.6	9.1
13	Textiles	1.28	78.08	71.95	76.72	8.5	-6.2
14	Wearing apparel	1.80	76.37	59.76	86.09	27.8	-30.6
15	Leather and related products	0.34	45.82	29.95	57.33	53.0	-47.8
16	Wood and products of wood and cork, except furniture	0.72	86.32	78.68	85.62	9.7	-8.1
17	Paper and paper products	2.44	104.48	94.40	104.03	10.7	-9.3
18	Printing and reproduction of recorded products	1.17	76.33	65.43	68.90	16.6	-5.0
19	Coke and refined petroleum products	28.73	128.83	75.30	113.91	71.1	-33.9
20	Chemicals and chemical products	4.43	105.24	85.63	86.84	22.9	-1.4
21	Basic pharmaceutical products and pharmaceutical preparations	3.67	108.90	90.95	95.50	19.7	-4.8
22	Rubber and plastic products	3.47	102.24	89.16	88.59	14.7	0.7
23	Other non-metallic mineral products	3.31	99.02	86.32	94.96	14.7	-9.1
24	Basic metals	7.19	127.93	98.49	96.30	29.9	2.3
25	Fabricated metal products, except machinery and equipment	4.51	96.54	78.65	82.41	22.8	-4.6
26	Computers, electronic and optical products	0.78	149.62	119.06	118.50	25.7	0.5
27	Electrical equipment	2.65	132.45	98.87	110.30	34.0	-10.4
28	Machinery and equipment n.e.c.	1.56	86.77	83.39	77.94	4.1	7.0
29	Motor vehicles, trailers and semi-trailers	0.23	107.84	82.29	59.78	31.1	37.7
30	Other transport equipment	0.52	52.44	43.80	36.05	19.7	21.5
31	Furniture	0.97	82.16	83.85	74.71	-2.0	12.2
32	Other manufacturing	0.66	89.05	77.86	84.42	14.4	-7.8
33	Repair and installation of machinery and equipment	1.42	83.41	78.43	86.23	6.4	-9.0
MAIN INDUSTRIAL GROUPINGS							
1	Energy	28.57	128.90	74.90	113.27	72.1	-33.9
2	Intermediate goods	28.29	111.33	91.16	95.65	22.1	-4.7
3	Capital goods	7.00	91.46	77.74	76.36	17.6	1.8
4	Consumer Durables	1.86	93.64	87.30	81.35	7.3	7.3
5	Consumer Non-Durables	34.28	113.16	97.19	106.40	16.4	-8.7

* Provisional data

Note: The indices and the percentage changes are rounded up to two and one decimal digits, respectively, when published.

Table 2. Annual rates of change of the Turnover Index in Industry: Domestic Market

Base year: 2015=100.0

Code	Division	Weights	August			Rate of change (%)	
			2021*	2020	2019	2021/2020	2020/2019
OVERALL INDEX			111.20	86.73	106.35	28.2	-18.4
B	MINING AND QUARRYING	100.00	51.09	59.48	52.27	-14.1	13.8
05-06-09	Mining of coal and lignite - Extraction of crude petroleum and natural gas - Mining support service activities	31.66	25.12	22.63	30.17	11.0	-25.0
07	Mining of metal ores	12.83	78.25	91.87	86.12	-14.8	6.7
08	Other mining and quarrying products	55.50	59.62	73.00	57.06	-18.3	28.0
C	MANUFACTURING	100.00	111.89	87.05	106.97	28.5	-18.6
10	Food	28.50	109.86	95.22	106.89	15.4	-10.9
11	Beverages	4.86	179.26	130.60	158.83	37.3	-17.8
12	Tobacco products	0.51	214.95	196.11	196.10	9.6	0.0
13	Textiles	1.11	66.64	57.62	70.25	15.7	-18.0
14	Wearing apparel	1.77	77.86	58.60	84.02	32.9	-30.3
15	Leather and related products	0.41	49.96	32.12	59.14	55.5	-45.7
16	Wood and products of wood and cork, except furniture	0.96	83.28	81.06	82.84	2.7	-2.1
17	Paper and paper products	3.12	103.63	91.27	102.22	13.5	-10.7
18	Printing and reproduction of recorded products	1.63	61.51	53.95	59.51	14.0	-9.4
19	Coke and refined petroleum products	24.90	119.06	70.43	130.09	69.0	-45.9
20	Chemicals and chemical products	4.90	102.11	83.53	84.10	22.2	-0.7
21	Basic pharmaceutical products and pharmaceutical preparations	3.85	110.85	77.07	73.76	43.8	4.5
22	Rubber and plastic products	3.31	100.76	91.80	87.00	9.8	5.5
23	Other non-metallic mineral products	3.31	91.64	87.43	89.18	4.8	-2.0
24	Basic metals	3.49	136.18	103.00	91.39	32.2	12.7
25	Fabricated metal products, except machinery and equipment	4.25	113.11	98.42	97.34	14.9	1.1
26	Computers, electronic and optical products	0.40	55.00	87.27	85.46	-37.0	2.1
27	Electrical equipment	2.24	125.60	115.44	119.17	8.8	-3.1
28	Machinery and equipment n.e.c.	1.46	95.13	80.10	78.54	18.8	2.0
29	Motor vehicles, trailers and semi-trailers	0.27	119.16	88.52	60.29	34.6	46.8
30	Other transport equipment	0.58	44.81	40.35	28.77	11.1	40.2
31	Furniture	1.35	79.15	78.13	70.23	1.3	11.3
32	Other manufacturing	0.88	88.89	77.21	86.47	15.1	-10.7
33	Repair and installation of machinery and equipment	1.92	88.09	83.65	82.93	5.3	0.9
MAIN INDUSTRIAL GROUPINGS							
1	Energy	24.89	118.12	70.00	129.12	68.7	-45.8
2	Intermediate goods	25.73	107.27	92.47	94.26	16.0	-1.9
3	Capital goods	7.19	93.51	83.51	76.34	12.0	9.4
4	Consumer Durables	2.31	89.50	80.04	83.51	11.8	-4.2
5	Consumer Non-Durables	39.88	113.86	94.44	106.67	20.6	-11.5

* Provisional data

Note: The indices and the percentage changes are rounded up to two and one decimal digits, respectively, when published.

Table 3. Annual rates of change of the Turnover Index in Industry: Non-Domestic Market

Base year: 2015=100.0

Code	Division	Weights	August			Rate of change (%)	
			2021*	2020	2019	2021/2020	2020/2019
OVERALL INDEX			123.24	89.22	95.68	38.1	-6.7
B	MINING AND QUARRYING	100.00	147.97	111.61	105.63	32.6	5.7
05-06-09	Mining of coal and lignite - Extraction of crude petroleum and natural gas - Mining support service activities	7.53	565.97	0.00	0.00	-	-
07	Mining of metal ores	23.74	107.66	255.13	125.05	-57.8	104.0
08	Other mining and quarrying products	68.74	116.12	74.27	110.48	56.4	-32.8
C MANUFACTURING		100.00	122.81	88.83	95.50	38.3	-7.0
10	Food	13.27	118.04	107.86	101.99	9.4	5.8
11	Beverages	1.01	125.90	105.64	107.90	19.2	-2.1
12	Tobacco products	2.53	91.71	91.53	77.25	0.2	18.5
13	Textiles	1.61	93.77	91.62	85.60	2.3	7.0
14	Wearing apparel	1.86	73.57	61.95	90.01	18.8	-31.2
15	Leather and related products	0.19	28.02	20.61	49.53	35.9	-58.4
16	Wood and products of wood and cork, except furniture	0.24	110.48	59.76	107.66	84.9	-44.5
17	Paper and paper products	1.11	109.18	111.82	114.07	-2.4	-2.0
18	Printing and reproduction of recorded products	0.26	260.86	208.50	185.75	25.1	12.2
19	Coke and refined petroleum products	36.32	142.11	81.91	91.91	73.5	-10.9
20	Chemicals and chemical products	3.50	113.91	91.43	94.41	24.6	-3.2
21	Basic pharmaceutical products and pharmaceutical preparations	3.30	104.41	123.00	145.73	-15.1	-15.6
22	Rubber and plastic products	3.79	104.80	84.59	91.33	23.9	-7.4
23	Other non-metallic mineral products	3.31	113.65	84.11	106.42	35.1	-21.0
24	Basic metals	14.54	124.00	96.35	98.63	28.7	-2.3
25	Fabricated metal products, except machinery and equipment	5.03	68.78	45.52	57.40	51.1	-20.7
26	Computers, electronic and optical products	1.52	198.86	135.61	135.69	46.6	-0.1
27	Electrical equipment	3.44	141.31	77.46	98.85	82.4	-21.6
28	Machinery and equipment n.e.c.	1.76	73.04	88.81	76.96	-17.8	15.4
29	Motor vehicles, trailers and semi-trailers	0.14	63.78	58.01	57.76	9.9	0.4
30	Other transport equipment	0.40	74.17	53.65	56.80	38.2	-5.5
31	Furniture	0.21	120.37	156.68	131.77	-23.2	18.9
32	Other manufacturing	0.22	90.30	82.87	68.49	9.0	21.0
33	Repair and installation of machinery and equipment	0.43	42.33	32.55	115.16	30.0	-71.7
MAIN INDUSTRIAL GROUPINGS							
1	Energy	35.82	143.64	81.61	91.58	76.0	-10.9
2	Intermediate goods	33.33	117.49	89.17	97.77	31.8	-8.8
3	Capital goods	6.62	87.08	65.40	76.41	33.1	-14.4
4	Consumer Durables	0.98	112.89	121.10	71.30	-6.8	69.8
5	Consumer Non-Durables	23.25	110.79	106.47	105.49	4.1	0.9

* Provisional data

Note: The indices and the percentage changes are rounded up to two and one decimal digits, respectively, when published.

Table 4. Annual rates of change of the Turnover Index in Industry: Eurozone Countries

Base year: 2015=100.0

Code	Sections and main groupings	August			Rate of change (%)	
		2021*	2020	2019	2021/2020	2020/2019
OVERALL INDEX		105.53	91.69	91.73	15.1	0.0
INDUSTRIAL SECTIONS						
B	MINING AND QUARRYING	267.30	56.97	117.37	369.2	-51.5
C	MANUFACTURING	102.29	92.39	91.22	10.7	1.3
MAIN INDUSTRIAL GROUPINGS						
1	Energy	74.64	86.65	47.77	-13.9	81.4
2	Intermediate goods	119.53	90.71	104.57	31.8	-13.3
3	Capital goods	89.90	57.54	83.80	56.2	-31.3
4	Consumer Durables	145.81	121.26	117.23	20.2	3.4
5	Consumer Non-Durables	111.95	100.31	108.00	11.6	-7.1

* Provisional data

Table 5. Annual rates of change of the Turnover Index in Industry: Non-Eurozone Countries

Base year: 2015=100.0

Code	Sections and main groupings	August			Rate of change (%)	
		2021*	2020	2019	2021/2020	2020/2019
OVERALL INDEX		132.66	87.91	97.77	50.9	-10.1
INDUSTRIAL SECTIONS						
B	MINING AND QUARRYING	69.64	147.47	97.92	-52.8	50.6
C	MANUFACTURING	133.67	86.95	97.77	53.7	-11.1
MAIN INDUSTRIAL GROUPINGS						
1	Energy	163.52	80.16	104.20	104.0	-23.1
2	Intermediate goods	116.17	88.16	93.34	31.8	-5.6
3	Capital goods	86.12	68.07	73.90	26.5	-7.9
4	Consumer Durables	90.15	120.99	39.59	-25.5	205.6
5	Consumer Non-Durables	109.66	112.48	103.05	-2.5	9.1

* Provisional data

Note: The indices and the percentage changes are rounded up to two and one decimal digits, respectively, when published.

Table 6. Monthly rate of change of the Turnover Index in Industry: Total Market

Base year: 2015=100.0

Code	Sections and main groupings	August 2021*	July 2021**	Rate of change (%) Aug. 2021/ July 2021
OVERALL INDEX		115.26	139.03	-17.1
INDUSTRIAL SECTIONS				
B	MINING AND QUARRYING	93.12	97.07	-4.1
C	MANUFACTURING	115.56	139.60	-17.2
MAIN INDUSTRIAL GROUPINGS				
1	Energy	128.90	124.34	3.7
2	Intermediate goods	111.33	149.53	-25.6
3	Capital goods	91.46	138.45	-33.9
4	Consumer Durables	93.64	144.01	-35.0
5	Consumer Non-Durables	113.16	142.44	-20.6

Table 7. Monthly rate of change of the Turnover Index in Industry: Domestic Market

Base year: 2015=100.0

Code	Sections and main groupings	August 2021*	July 2021**	Rate of change (%) Aug. 2021/ July 2021
OVERALL INDEX		111.20	128.49	-13.5
INDUSTRIAL SECTIONS				
B	MINING AND QUARRYING	51.09	82.61	-38.2
C	MANUFACTURING	111.89	129.02	-13.3
MAIN INDUSTRIAL GROUPINGS				
1	Energy	118.12	95.34	23.9
2	Intermediate goods	107.27	146.87	-27.0
3	Capital goods	93.51	142.52	-34.4
4	Consumer Durables	89.50	134.77	-33.6
5	Consumer Non-Durables	113.86	134.43	-15.3

Table 8. Monthly rate of change of the Turnover Index in Industry: Non-Domestic Market

Base year: 2015=100.0

Code	Sections and main groupings	August 2021*	July 2021**	Rate of change (%) Aug. 2021/ July 2021
OVERALL INDEX		123.24	159.78	-22.9
INDUSTRIAL SECTIONS				
B	MINING AND QUARRYING	147.97	115.95	27.6
C	MANUFACTURING	122.81	160.55	-23.5
MAIN INDUSTRIAL GROUPINGS				
1	Energy	143.64	164.03	-12.4
2	Intermediate goods	117.49	153.59	-23.5
3	Capital goods	87.08	129.74	-32.9
4	Consumer Durables	112.89	187.05	-39.6
5	Consumer Non-Durables	110.79	169.53	-34.6

* Provisional data ** Revised data

Note: The indices and the percentage changes are rounded up to two and one decimal digits, respectively, when published.

Table 9. Monthly rate of change of the Turnover Index in Industry: Eurozone Countries

Base year: 2015=100.0

Code	Sections and main groupings	August 2021*	July 2021**	Rate of change (%) Aug. 2021/ July 2021
OVERALL INDEX		105.53	164.17	-35.7
INDUSTRIAL SECTIONS				
B	MINING AND QUARRYING	267.30	147.82	80.8
C	MANUFACTURING	102.29	164.50	-37.8
MAIN INDUSTRIAL GROUPINGS				
1	Energy	74.64	129.16	-42.2
2	Intermediate goods	119.53	158.10	-24.4
3	Capital goods	89.90	162.75	-44.8
4	Consumer Durables	145.81	287.47	-49.3
5	Consumer Non-Durables	111.95	191.51	-41.5

* Provisional data ** Revised data

Table 10. Monthly rate of change of the Turnover Index in Industry: Non-Eurozone Countries

Base year: 2015=100.0

Code	Sections and main groupings	August 2021*	July 2021**	Rate of change (%) Aug. 2021/ July 2021
OVERALL INDEX		132.66	157.45	-15.7
INDUSTRIAL SECTIONS				
B	MINING AND QUARRYING	69.64	95.04	-26.7
C	MANUFACTURING	133.67	158.46	-15.6
MAIN INDUSTRIAL GROUPINGS				
1	Energy	163.52	174.08	-6.1
2	Intermediate goods	116.17	150.65	-22.9
3	Capital goods	86.12	118.55	-27.4
4	Consumer Durables	90.15	117.71	-23.4
5	Consumer Non-Durables	109.66	148.15	-26.0

* Provisional data ** Revised data

Note: The indices and the percentage changes are rounded up to two and one decimal digits, respectively, when published.

Table 11. Evolution of the Turnover Index in Industry (y-o-y changes): Total Market

Base year: 2015=100.0

Year and month	Overall Index (Total Market)		Turnover Index in Industry in Domestic Market		Turnover Index in Industry in Non-Domestic Market		
	Index	Annual rate of change (%)	Index	Annual rate of change (%)	Index	Annual rate of change (%)	
2020:	8	87.57	-14.8	86.73	-18.4	89.22	-6.7
	9	103.61	-10.3	100.95	-8.6	108.87	-13.2
	10	98.38	-13.6	96.83	-13.0	101.44	-14.6
	11	103.58	-2.2	99.60	-4.5	111.43	2.1
	12	117.97	-3.3	115.81	-1.6	122.23	-6.3
2021*:	1	87.11	-12.3	80.79	-16.7	99.57	-4.3
	2	101.29	-3.1	92.96	-5.6	117.71	1.1
	3	120.84	18.2	107.17	10.3	147.78	31.8
	4	122.01	52.9	111.33	48.9	143.06	59.5
	5	119.78	37.6	106.22	24.6	146.51	61.8
	6	136.43	22.4	127.83	15.3	153.38	36.0
	7	139.03	25.1	128.49	18.8	159.78	36.7
	8	115.26	31.6	111.20	28.2	123.24	38.1

*Provisional data

Table 12. Evolution of the Turnover Index in Industry (y-o-y changes): Non-Domestic Market

Base year: 2015=100.0

Year and month	Overall Index (Non-Domestic Market)		Turnover Index in Industry in Eurozone Countries		Turnover Index in Industry in Non-Eurozone Countries		
	Index	Annual rate of change (%)	Index	Annual rate of change (%)	Index	Annual rate of change (%)	
2020:	8	89.22	-6.7	91.69	0.0	87.91	-10.1
	9	108.87	-13.2	112.74	-6.7	106.81	-16.5
	10	101.44	-14.6	106.35	-6.9	98.82	-18.5
	11	111.43	2.1	113.15	-12.2	110.51	12.0
	12	122.23	-6.3	108.01	-12.5	129.79	-3.3
2021*:	1	99.57	-4.3	108.29	-7.3	94.94	-2.3
	2	117.71	1.1	129.23	4.3	111.58	-0.7
	3	147.78	31.8	146.62	9.8	148.39	47.2
	4	143.06	59.5	155.73	43.3	136.33	71.2
	5	146.51	61.8	161.55	52.2	138.52	68.4
	6	153.38	36.0	164.82	29.5	147.30	40.2
	7	159.78	36.7	164.17	35.2	157.45	37.6
	8	123.24	38.1	105.53	15.1	132.66	50.9

*Provisional data

Note: The indices and the percentage changes are rounded up to two and one decimal digits, respectively, when published.

Table 13. Average indices and rates of change (%) of the 12-month periods of Turnover Index in Industry: Total Market
Base year: 2015=100.0

Code	Division	Average Indices of 12-month periods			Rate of change (%)	
		Sep. 2020- Aug. 2021*	Sep. 2019- Aug. 2020	Sep. 2018- Aug. 2019	2021/2020	2020/2019
OVERALL INDEX		113.78	103.36	114.76	10.1	-9.9
B	MINING AND QUARRYING	102.31	100.28	107.09	2.0	-6.4
05-06-09	Mining of coal and lignite - Extraction of crude petroleum and natural gas - Mining support service activities	35.27	38.63	99.70	-8.7	-61.3
07	Mining of metal ores	164.48	184.84	140.34	-11.0	31.7
08	Other mining and quarrying products	107.68	97.36	100.12	10.6	-2.8
C	MANUFACTURING	113.93	103.41	114.86	10.2	-10.0
10	Food	108.20	102.60	103.01	5.5	-0.4
11	Beverages	112.59	99.48	115.71	13.2	-14.0
12	Tobacco products	143.52	132.01	126.13	8.7	4.7
13	Textiles	111.28	98.06	106.38	13.5	-7.8
14	Wearing apparel	72.01	76.46	94.55	-5.8	-19.1
15	Leather and related products	61.51	69.42	87.23	-11.4	-20.4
16	Wood and products of wood and cork, except furniture	109.18	102.31	105.10	6.7	-2.7
17	Paper and paper products	113.80	113.41	113.32	0.3	0.1
18	Printing and reproduction of recorded products	92.60	91.00	96.16	1.8	-5.4
19	Coke and refined petroleum products	97.19	91.07	124.67	6.7	-27.0
20	Chemicals and chemical products	129.22	117.82	115.36	9.7	2.1
21	Basic pharmaceutical products and pharmaceutical preparations	180.67	155.17	136.20	16.4	13.9
22	Rubber and plastic products	121.83	108.00	104.99	12.8	2.9
23	Other non-metallic mineral products	115.44	101.86	110.79	13.3	-8.1
24	Basic metals	142.26	117.46	132.89	21.1	-11.6
25	Fabricated metal products, except machinery and equipment	113.11	96.19	101.00	17.6	-4.8
26	Computers, electronic and optical products	178.40	165.91	145.81	7.5	13.8
27	Electrical equipment	171.61	127.51	123.42	34.6	3.3
28	Machinery and equipment n.e.c.	117.98	103.98	107.08	13.5	-2.9
29	Motor vehicles, trailers and semi-trailers	114.15	113.16	101.68	0.9	11.3
30	Other transport equipment	74.26	59.92	69.17	23.9	-13.4
31	Furniture	114.19	105.16	113.86	8.6	-7.6
32	Other manufacturing	101.22	92.43	102.53	9.5	-9.8
33	Repair and installation of machinery and equipment	103.03	96.78	93.89	6.5	3.1
MAIN INDUSTRIAL GROUPINGS						
1	Energy	96.78	90.74	124.54	6.7	-27.1
2	Intermediate goods	128.19	110.69	115.65	15.8	-4.3
3	Capital goods	116.08	102.97	102.87	12.7	0.1
4	Consumer Durables	109.93	99.88	104.73	10.1	-4.6
5	Consumer Non-Durables	115.78	108.10	108.85	7.1	-0.7

*Provisional data

Note: The indices and the percentage changes are rounded up to two and one decimal digits, respectively, when published.

METHODOLOGICAL NOTES

Generally	The Industrial Turnover Index is an indicator of an enterprise's business cycle showing the monthly evolution of the market of goods and services in industry. The first compilation of the Turnover Index was completed by the Hellenic Statistical Authority in 2006, with base year 2000=100.0 and is compiled from 2000 onwards.
Purpose of the index	The purpose of this index is to measure the monthly activity of the industrial sector in terms of value. Turnover comprises the totals invoiced by the observation units during the reference period and corresponds to the market sales of goods or services supplied to third parties. The purposes and the characteristics of the Turnover Index apply, as well, to the indices for the distinction between domestic and non-domestic turnover.
Legal Framework	The compilation and publication of the Turnover Index is based on the framework of the implementation of Council Regulation (EC) No 1165/1998 concerning short-term statistics (STS-R), as well as Regulation (EC) No 1158/2005 of the European Parliament and of the Council amending Council Regulation (EC) No 1165/1998. Furthermore, this index is governed by Regulation (EC) No 1893/2006 of the European Parliament and of the Council, by Commission Regulation (EC) No 656/2007, by Regulation (EC) No 451/2008 of the Council, by Regulation (EU) No 2019/2152 of the European Parliament and of the Council on European business statistics, as well as Commission Implementing Regulation (EU) No 2020/1197 laying down technical specifications and arrangements pursuant to Regulation (EU) No 2019/2152.
Reference period	Month.
Base year	2015=100.0.
Revision	The latest revision of the Turnover Index in Industry (base year 2015=100.0) took place in the framework of Council Regulation (EC) No 1165/1998 concerning short-term statistics. In accordance with this regulation the index is revised every five years, in years ending in 0 or 5.
Statistical classifications	At the level of classes of economic activities, the statistical classification of economic activities NACE Rev. 2 of EU was used (Regulation No 1893/2006), while at the level of main industrial groupings, the allocation of two-digit and three-digit NACE Rev. 2 headings to categories of aggregate classification was used, in accordance with Commission Regulation No 656/2007.
Geographical coverage	The index covers the whole Country.
Coverage of economic activities	The Turnover Index in Industry is compiled for all activities listed in Sections B (mining and quarrying) and C (manufacturing) of the NACE Rev. 2 statistical classification.
Computation of the Index	The Turnover Index in Industry is a fixed base index. This index is calculated at a first stage at the four-digit level of economic activity and subsequently, with the implementation of appropriate weighting coefficients, the index is calculated at higher levels (three-level and two-level of economic activity) as well as at the level of Main Industrial Groupings (MIGs).
Data collection and processing in the context of the COVID-19 pandemic	The compilation of the indices was mainly based on data collected by the enterprises (via web-based application, email), as well as data from administrative sources. For August 2021 there was no significant change in the data collection compared to previous reference months.
Publication of data	The Turnover Index in Industry (2015=100.0) is released since August 2019 with June 2019 as first reference month. Data with base year 2015=100.0 are available from January 2000 onwards.
References	More information about the methodology concerning the compilation and calculation of the index and for the time series is available on the website of the Hellenic Statistical Authority (ELSTAT) (http://www.statistics.gr/en/statistics/-/publication/DKT24/).