



SURVEYS ON SECONDARY GENERAL AND VOCATIONAL EDUCATION END OF SCHOOL YEAR 2021/2022

The Hellenic Statistical Authority (ELSTAT) announces statistics on Secondary General and Vocational Education for the end of school year 2021/2022. Specifically, this announcement presents statistics on Lower and Upper Secondary Education Schools together with statistics on Ecclesiastical Lower and Upper Education Schools and Second Chance Schools, which are included in Secondary General Education. Moreover, statistics on Vocational Upper Secondary Schools and Vocational Schools are also presented.

SECONDARY GENERAL EDUCATION

In the lower and upper secondary education schools of Secondary General Education the following are observed:

- **School units** in the school year 2021/2022 compared with 2020/2021 increased from 1,825 to 1,841 in lower secondary schools and from 1,355 to 1,371 in upper secondary schools. (Tables 2 and 4, respectively).
- **Teaching staff** in the school year 2021/2022 compared with 2020/2021 decreased from 41,067 to 39,815 persons in lower secondary schools and from 24,353 to 23,566 persons in upper secondary schools (Tables 2 and 4, respectively).
- **Pupils enrolled** in the school year 2021/2022 compared with 2020/2021 increased from 328,582 to 332,413 in lower secondary schools and from 230,295 to 231,076 in upper secondary schools (Tables 3 and 5, respectively).
- **Graduates** in the school year 2021/2022 compared with 2020/2021 decreased from 104,767 to 103,557 in lower secondary schools and from 74,032 to 72,939 in upper secondary schools (Tables 3 and 5, respectively).
- **The ratio of teaching staff to pupils** in the school year 2021/2022 was 1 teacher per 8.3 pupils in lower secondary schools and 1 teacher per 9.8 pupils in upper secondary schools, while for the school year 2020/2021 the corresponding ratio was 1 to 8.0 and 1 to 9.5 respectively (Tables 2, 3, 4 and 5).
- The **Region of Attiki** accounted for the largest share of pupils enrolled in Secondary Education in Greece, with 35.1% in lower secondary schools and 37.7% in upper secondary schools (Graphs 2 and 3 respectively).

Information on methodological issues:

Division of Sectoral Statistics
Section of Statistics on Education & Sports
Head of the Section: Dimitra Angelopoulou
Tel: +30 213 135 2134
e-mail: d.angelopoulou@statistics.gr

Information for data provision:

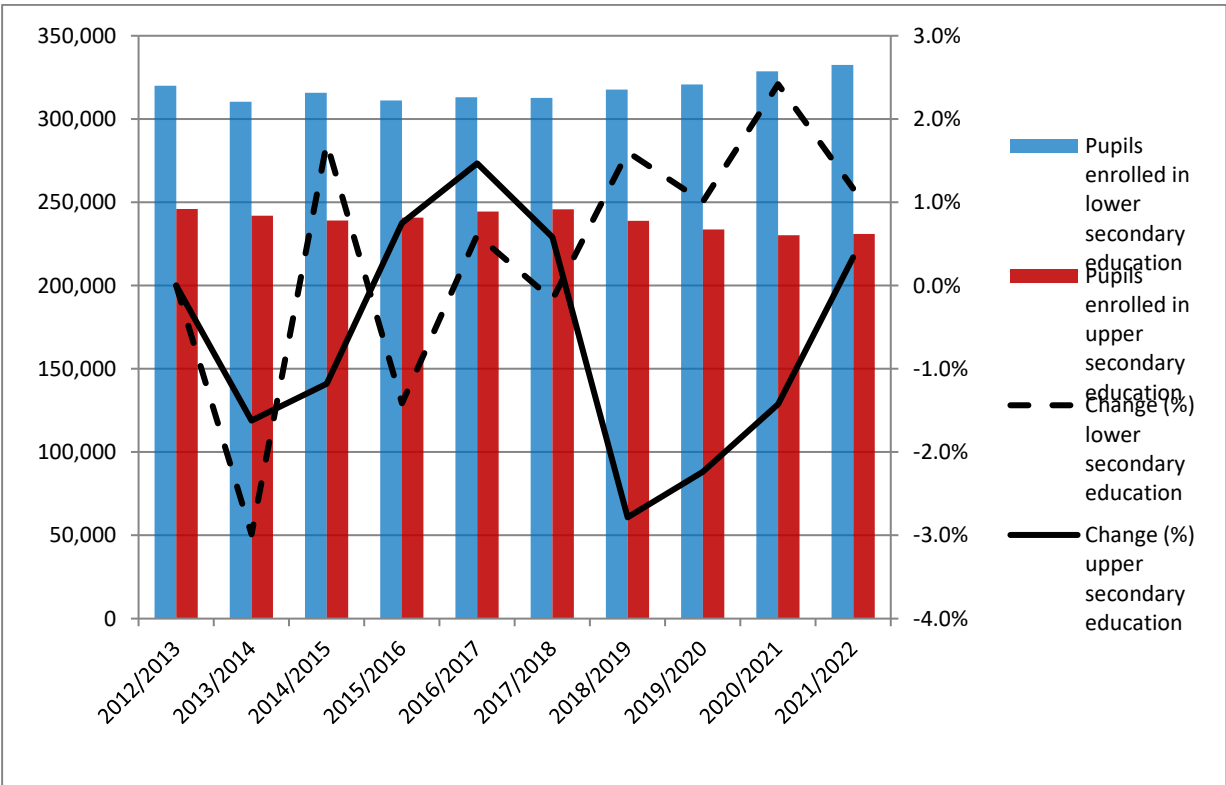
Tel. +30 213 135 2022, 2310
email: data.dissem@statistics.gr

Table 1 and Graph 1 depict the evolution of pupil population in lower and upper secondary education during the period 2012/2013 - 2021/2022. Ecclesiastical Secondary Education schools and Second Chance schools are not included.

Table 1
Evolution of pupil population in Secondary Education 2012/13 – 2021/22

School year	Pupils enrolled ¹	
	Lower secondary education schools	Upper secondary education schools
2012/2013	319,950	245,892
2013/2014	310,389	241,905
2014/2015	315,702	239,055
2015/2016	311,236	240,852
2016/2017	313,130	244,386
2017/2018	312,604	245,811
2018/2019	317,622	238,968
2019/2020	320,822	233,627
2020/2021	328,582	230,295
2021/2022	332,413	231,076

Graph 1
Evolution of pupil population in Secondary Education 2012/13 – 2021/22



¹ Ecclesiastical Secondary Education schools and Second Chance schools are not included.

A. LOWER SECONDARY SCHOOLS

Tables 2 and 3 present data on the school units, teaching staff, pupils enrolled and graduates. Ecclesiastical Secondary Education schools and Second Chance schools are not included.

Table 2. School units and teaching staff ² (Lower secondary education)

<i>By Type of school unit</i>						
School units	Number of school units			Teaching staff		
	2020/21	2021/22	Change (%)	2020/21	2021/22	Change (%)
Public	1,727	1,732	0.3	38,559	37,396	-3.0
Private	98	109	11.2	2,508	2,419	-3.5
TOTAL	1,825	1,841	0.9	41,067	39,815	-3.0
<i>By Region</i>						
Region (NUTS 2)	Number of school units			Teaching staff		
	2020/21	2021/22	Change (%)	2020/21	2021/22	Change (%)
Anatoliki Makedonia, Thraki	100	99	-1.0	2,226	2,171	-2.5
Kentriki Makedonia	292	296	1.4	6,650	6,463	-2.8
Dytiki Makedonia	69	70	1.4	1,127	1,101	-2.3
Thessalia	126	126	0.0	3,002	2,923	-2.6
Ipeiros	81	83	2.5	1,406	1,394	-0.9
Ionia Nisia	50	50	0.0	1,110	1,093	-1.5
Dytiki Ellada	143	143	0.0	2,639	2,529	-4.2
Stereia Ellada	119	119	0.0	2,073	1,953	-5.8
Peloponnisos	110	110	0.0	2,131	2,017	-5.3
Attiki	486	492	1.2	13,063	12,651	-3.2
Voreio Aigaio	54	55	1.9	1,076	1,016	-5.6
Notio Aigaio	85	88	3.5	1,775	1,786	0.6
Kriti	110	110	0.0	2,789	2,718	-2.5
TOTAL	1,825	1,841	0.9	41,067	39,815	-3.0

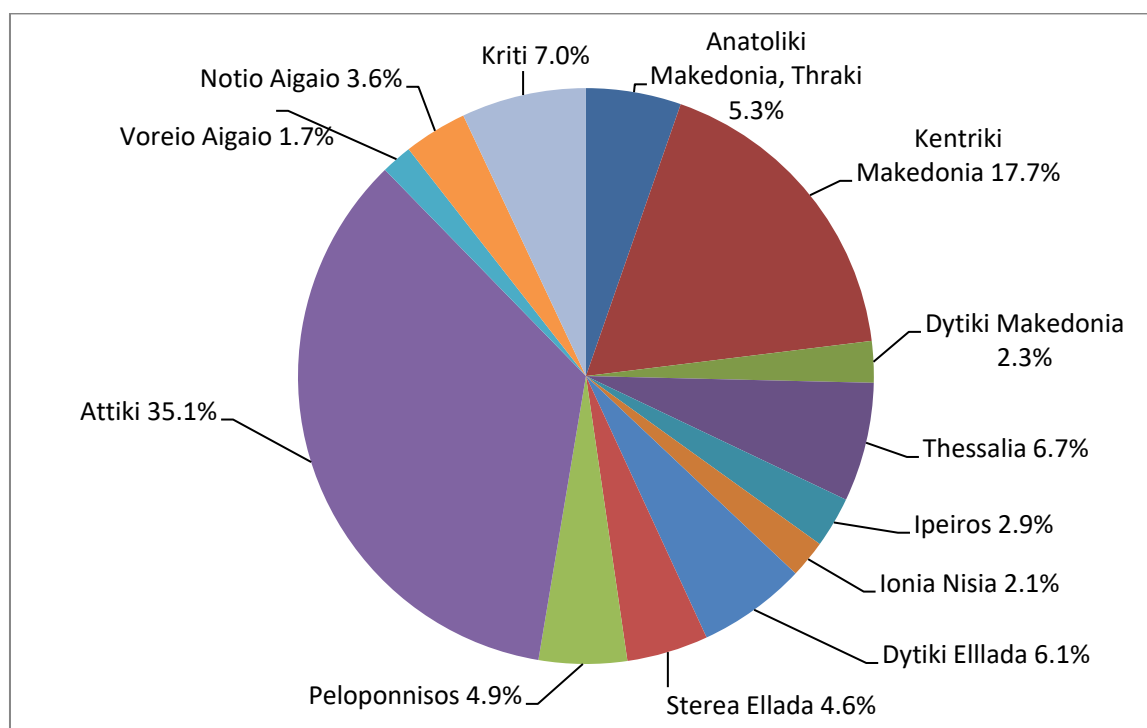
² Absent teachers are also included.

Absent teachers are the teachers with a fixed post in the school unit, who are absent for more than 20 days (due to illness, training, maternity leave, etc.) and their replacement is pending, as well as the teachers who are seconded to other administrative posts of the Ministry of Education and Religious Affairs or elsewhere.

**Table 3. Pupils enrolled and graduates by type of school unit and NUTS 2 Region
(Lower Secondary Schools)**

<i>By Type of School Unit</i>						
School units	Pupils enrolled			Graduates		
	2020/21	2021/22	Change (%)	2020/21	2021/22	Change (%)
Public	311,111	312,078	0.3	99,329	97,338	-2.0
Private	17,471	20,335	16.4	5,438	6,219	14.4
TOTAL	328,582	332,413	1.2	104,767	103,557	-1.2
<i>By Region</i>						
Region (NUTS 2)	Pupils enrolled			Graduates		
	2020/21	2021/22	Change (%)	2020/21	2021/22	Change (%)
Anatoliki Makedonia, Thraki	17,730	17,750	0.1	5,512	5,412	-1.8
Kentriki Makedonia	58,496	58,874	0.6	18,817	18,449	-2.0
Dytiki Makedonia	7,706	7,725	0.2	2,533	2,493	-1.6
Thessalia	22,108	22,236	0.6	7,003	6,774	-3.3
Ipeiros	9,409	9,478	0.7	3,104	2,920	-5.9
Ionia Nisia	6,918	7,010	1.3	2,217	2,159	-2.6
Dytiki Ellada	19,931	20,258	1.6	6,311	6,171	-2.2
Stereia Ellada	15,232	15,221	-0.1	4,957	4,735	-4.5
Peloponnisos	16,331	16,438	0.7	5,232	5,161	-1.4
Attiki	114,492	116,545	1.8	36,339	36,486	0.4
Voreio Aigaio	5,644	5,771	2.3	1,721	1,819	5.7
Notio Aigaio	11,618	11,826	1.8	3,766	3,781	0.4
Kriti	22,967	23,281	1.4	7,255	7,197	-0.8
TOTAL	328,582	332,413	1.2	104,767	103,557	-1.2

Graph 2. Percentage distribution of pupils enrolled in lower secondary schools, by NUTS 2 Region, school year 2021/2022



B. UPPER SECONDARY SCHOOLS

Tables 4 and 5 present data on the school units, teaching staff, pupils enrolled and graduates. Ecclesiastical Secondary Education schools are not included.

Table 4. School units and teaching staff ³ (Upper secondary schools)

<i>By Type of School Units</i>						
School units	Number of school units			Teaching staff		
	2020/21	2021/22	Change (%)	2020/21	2021/22	Change (%)
Public	1,262	1,268	0.5	22,216	21,511	-3.2
Private	93	103	10.8	2,137	2,055	-3.8
TOTAL	1,355	1,371	1.2	24,353	23,566	-3.2
<i>By Region</i>						
Region (NUTS 2)	Number of school units			Teaching staff		
	2020/21	2021/22	Change (%)	2020/21	2021/22	Change (%)
Anatoliki Makedonia, Thraki	64	63	-1.6	1,087	1,036	-4.7
Kentriki Makedonia	211	212	0.5	3,994	3,917	-1.9
Dytiki Makedonia	37	38	2.7	610	545	-10.7
Thessalia	97	99	2.1	1,472	1,481	0.6
Ipeiros	51	52	2.0	821	781	-4.9
Ionia Nisia	36	36	0.0	501	483	-3.6
Dytiki Ellada	99	100	1.0	1,535	1,477	-3.8
Stereia Ellada	92	93	1.1	1,090	1,063	-2.5
Peloponnisos	91	91	0.0	1,312	1,283	-2.2
Attiki	389	395	1.5	9,225	8,812	-4.5
Voreio Aigaio	42	43	2.4	494	466	-5.7
Notio Aigaio	67	69	3.0	675	728	7.9
Kriti	79	80	1.3	1,537	1,494	-2.8
TOTAL	1,355	1,371	1.2	24,353	23,566	-3.2

³ Absent teachers are also included.

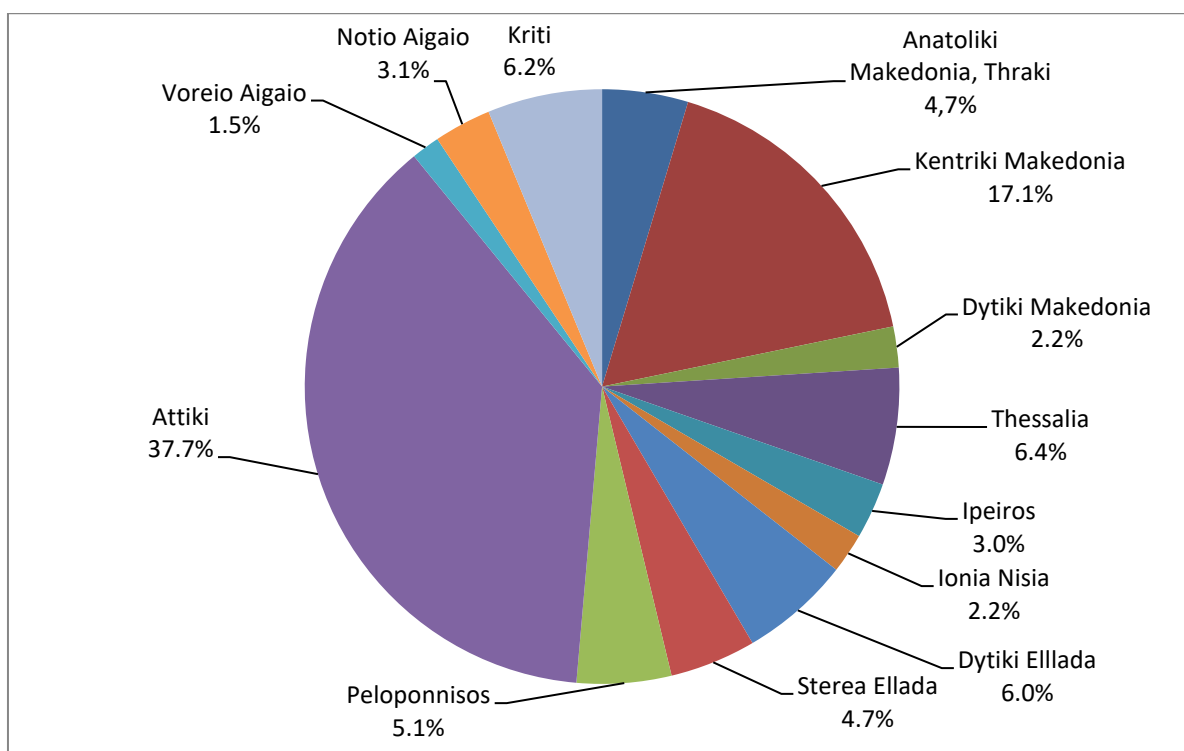
Absent teachers are the teachers with a fixed post in the school unit, who are absent for more than 20 days (due to illness, training, maternity leave, etc.) and their replacement is pending, as well as the teachers who are seconded to other administrative posts of the Ministry of Education and Religious Affairs or elsewhere.

**Table 5. Pupils enrolled and graduates by type of school unit and NUTS 2 Region
(Upper Secondary Schools)**

<i>By Type of School Unit</i>						
School units	Pupils enrolled			Graduates		
	2020/21	2021/22	Change (%)	2020/21	2021/22	Change (%)
Public	215,182	214,205	-0.5	69,240	67,669	-2.3
Private	15,113	16,871	11.6	4,792	5,270	10.0
TOTAL	230,295	231,076	0.3	74,032	72,939	-1.5

Region (NUTS 2)	Pupils enrolled			Graduates		
	2020/21	2021/22	Change (%)	2020/21	2021/22	Change (%)
Anatoliki Makedonia, Thraki	11,023	10,795	-2.1	3,582	3,460	-3.4
Kentriki Makedonia	39,250	39,474	0.6	12,687	12,321	-2.9
Dytiki Makedonia	5,403	5,145	-4.8	1,786	1,630	-8.7
Thessalia	14,633	14,705	0.5	4,678	4,557	-2.6
Ipeiros	6,649	7,035	5.8	1,964	2,138	8.9
Ionia Nisia	5,003	5,024	0.4	1,587	1,639	3.3
Dytiki Ellada	14,119	13,845	-1.9	4,549	4,470	-1.7
Stereia Ellada	11,043	10,830	-1.9	3,659	3,485	-4.8
Peloponnisos	11,905	11,873	-0.3	3,803	3,792	-0.3
Attiki	86,175	87,169	1.2	27,733	27,493	-0.9
Voreio Aigaio	3,670	3,578	-2.5	1,148	1,157	0.8
Notio Aigaio	7,214	7,193	-0.3	2,317	2,268	-2.1
Kriti	14,208	14,410	1.4	4,539	4,529	-0.2
TOTAL	230,295	231,076	0.3	74,032	72,939	-1.5

Graph 3. Percentage distribution of pupils enrolled in upper secondary schools, by NUTS 2 Region, school year 2021/2022



SECONDARY ECCLESIASTICAL EDUCATION (LOWER AND UPPER SECONDARY SCHOOLS)

The Ecclesiastical lower and upper Secondary schools constitute a separate branch of the Secondary General Education. In the Ecclesiastical lower and upper Secondary Education schools the following are observed:

- **School units** in ecclesiastical secondary education remained the same between school years 2020/2021 and 2021/2022 (Tables 6 and 7, respectively).
- **Teaching staff** in both lower and upper secondary schools increased by 0.6% in the school year 2021/2022 compared with 2020/2021 (Table 8).
- **Pupils enrolled** increased by 8.6% in the school year 2021/2022 compared with 2020/2021 in ecclesiastical lower secondary schools and by 2.5% in ecclesiastical upper secondary schools (Tables 6 and 7, respectively).
- **Graduates** decreased by 5.6% in the school year 2021/2022 compared with 2020/2021 in ecclesiastical lower secondary schools and increased by 6.1% in ecclesiastical upper secondary schools (Tables 6 and 7, respectively).

Table 6. Ecclesiastical Lower Secondary Schools

Pupils enrolled/Graduates and number of school units			
	School Year		Change (%)
	2020/21	2021/22	
Pupils enrolled	244	265	8.6
Graduates	89	84	-5.6
Number of School Units⁴	7	7	0.0

Table 7. Ecclesiastical Upper Secondary Schools

Pupils enrolled/Graduates and number of school units			
	School Year		Change (%)
	2020/21	2021/22	
Pupils enrolled	482	494	2.5
Graduates	147	156	6.1
Number of School Units⁵	10	10	0.0

Table 8. Teaching Staff in Ecclesiastical Secondary Education

Teaching Staff			
	School Year		Change (%)
	2020/21	2021/22	
TOTAL	168	169	0.6

⁴ All lower secondary schools include upper secondary school classes.

⁵ Lower secondary school units that host upper secondary school classes are included.

SECOND CHANCE SCHOOLS

Second Chance Schools are lower Secondary Education schools addressed to pupils that are over 18 years old. In the Second Chance Schools for the school year 2021/2022 the following are observed:

- **School units** increased by 1.0% in the school year 2021/2022 compared with 2020/2021 (Table 9).
- **Teaching staff** increased by 1.5% in the school year 2021/2022 compared with 2020/2021 (Table 10).
- **Pupils enrolled** decreased by 12.3% in the school year 2021/2022 compared with 2020/2021 (Table 11).
- **Foreign pupils** decreased by 3.6 % in the school year 2021/2022 compared with 2020/2021 (table 12).
- **Graduates** decreased by 22.3% in the school year 2021/2022 compared with 2020/2021 (table 13).

Table 9. School units of Second Chance Schools by type

Type of school unit	Total number of school units			Of which:					
				Central Unit			Branches		
	2020/21	2021/22	Change %	2020/21	2021/22	Change %	2020/21	2021/22	Change %
TOTAL	99	100	1.0	75	80	6.7	24	20	-16.7
Day	13	12	-7.7	11	12	9.1	2	0	-100.0
Afternoon	86	88	2.3	64	68	6.3	22	20	-9.1

Table 10. Teaching staff in Second Chance Schools by status and gender

Status of teaching staff	Total			Males			Females		
	2020/21	2021/22	Change %	2020/21	2021/22	Change %	2020/21	2021/22	Change %
TOTAL	1,144	1,161	1.5	456	459	0.7	688	702	2.0
Principals	76	82	7.9	47	52	10.6	29	30	3.4
Vice Principals	61	72	18.0	37	45	21.6	24	27	12.5
Seconded permanent staff	182	150	-17.6	82	75	-8.5	100	75	-25.0
Fixed-Term Contract staff	825	857	3.9	290	287	-1.0	535	570	6.5

Table 11. Pupils enrolled in Second Chance Schools by gender and grade

Grade	Total			Males			Females		
	2020/21	2021/22	Change %	2020/21	2021/22	Change %	2020/21	2021/22	Change %
TOTAL	6,194	5,430	-12.3	3,497	3,049	-12.8	2,697	2,381	-11.7
Grade A	3,162	2,673	-15.5	1,813	1,516	-16.4	1,349	1,157	-14.2
Grade B	3,032	2,757	-9.1	1,684	1,533	-9.0	1,348	1,224	-9.2

Table 12. Foreign pupils in Second Chance Schools by gender and citizenship

Citizenship	Total			Males			Females		
	2020/21	2021/22	Change %	2020/21	2021/22	Change %	2020/21	2021/22	Change %
TOTAL	1,296	1,249	-3.6	907	884	-2.5	389	365	-6.2
EU Member State	153	154	0.7	109	117	7.3	44	37	-15.9
Outside the EU	1,138	1,091	-4.1	798	765	-4.1	340	326	-4.1
Unknown citizenship	5	4	-20.0	0	2	-	5	2	-60.0

Table 13. Graduates of Second Chance Schools, by gender and NUTS 2 Region

NUTS 2 Region	Total			Males			Females		
	2020/21	2021/22	Change %	2020/21	2021/22	Change %	2020/21	2021/22	Change %
TOTAL	2,487	1,933	-22.3	1,328	999	-24.8	1,159	934	-19.4
Anatoliki Makedonia, Thraki	176	190	8.0	85	77	-9.4	91	113	24.2
Kentriki Makedonia	536	371	-30.8	286	207	-27.6	250	164	-34.4
Dytiki Makedonia	75	57	-24.0	40	31	-22.5	35	26	-25.7
Ipeiros	108	81	-25.0	46	34	-26.1	62	47	-24.2
Thessalia	178	110	-38.2	99	59	-40.4	79	51	-35.4
Stereia Ellada	247	176	-28.7	172	108	-37.2	75	68	-9.3
Ionia Nisia	37	36	-2.7	21	17	-19.0	16	19	18.8
Dytiki Ellada	216	185	-14.4	116	100	-13.8	100	85	-15.0
Peloponnisos	101	92	-8.9	60	48	-20.0	41	44	7.3
Attiki	365	280	-23.3	172	127	-26.2	193	153	-20.7
Voreio Aigaio	146	97	-33.6	66	49	-25.8	80	48	-40.0
Notio Aigaio	79	66	-16.5	30	30	0.0	49	36	-26.5
Kriti	223	192	-13.9	135	112	-17.0	88	80	-9.1

SECONDARY VOCATIONAL EDUCATION

In Secondary Vocational Education pertaining to Vocational Upper Secondary schools (EPAL) and Vocational Schools (EPAS) the following are observed:

- **School units** increased from 467 to 472 in the school year 2021/2022 compared with 2020/2021 (Table 15).
- **Teaching staff** decreased from 13,991 to 13,828 persons in the school year 2021/2022 compared with 2020/2021 (Table 15).
- **Pupils enrolled** decreased from 116,571 to 114,013 in the school year 2021/2022 compared with 2020/2021 (Table 16).
- **Graduates** decreased from 35,270 to 34,712 in the school year 2021/2022 compared with 2020/2021 (Table 16).
- **The ratio of teaching staff to pupils** in the school year 2021/2022 was 1 teacher per 8.2 pupils, while the corresponding ratio in the school year 2020/2021 was 1 teacher per 8.3 pupils (Tables 15 and 16).
- The **Region of Attiki** in the school year 2021/2022 accounted for 27.0% of the total pupil population of all the EPAL and EPAS in Greece (Graph 7).

Table 14 and Graph 4 depict the evolution of pupil population in Secondary Vocational Education during the period 2012/2013 to 2021/2022.

Table 14
Evolution of pupil population in Secondary Vocational Education
2012/13 – 2021/22

School Year	Pupils Enrolled
2012/2013	123,989
2013/2014	109,917
2014/2015	101,761
2015/2016	98,772
2016/2017	98,568
2017/2018	97,452
2018/2019	103,440
2019/2020	109,625
2020/2021	116,571
2021/2022	114,013

Graph 4
Evolution of pupil population in Secondary Vocational Education
2012/13 – 2021/22

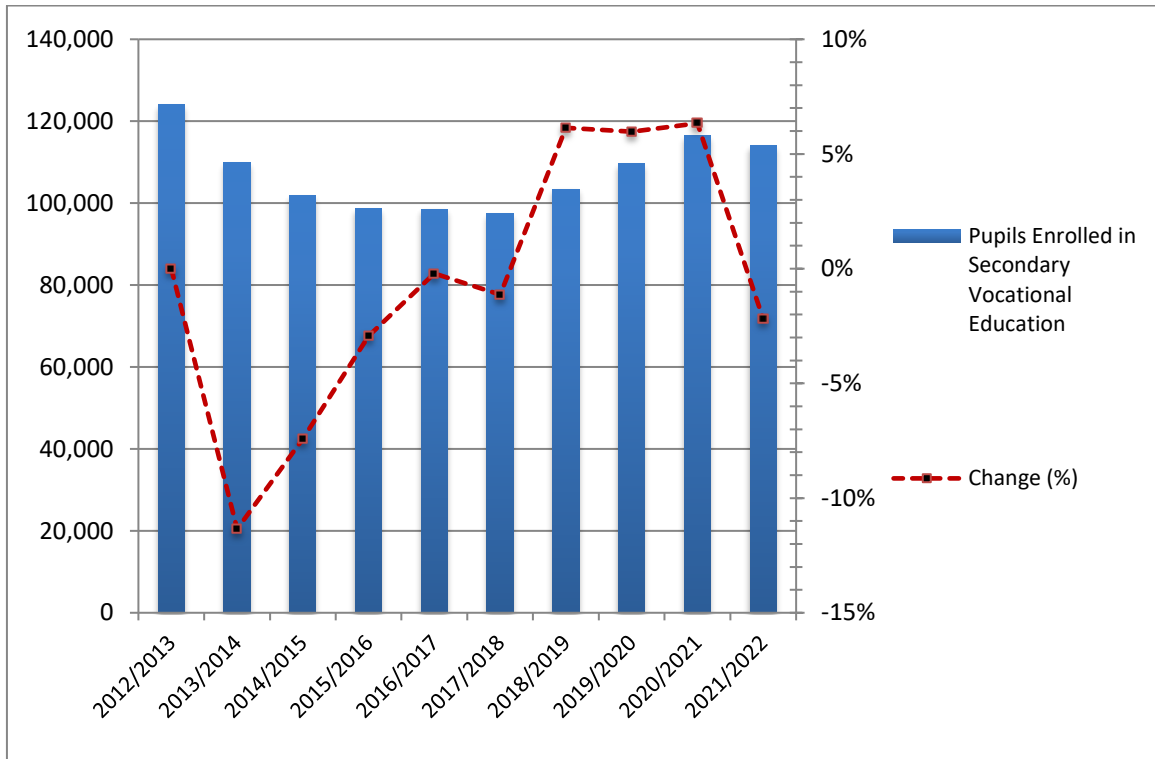


Table 15 presents data on the school units and teaching staff for school years 2020/2021 and 2021/2022.

Table 15. School units and teaching staff⁶

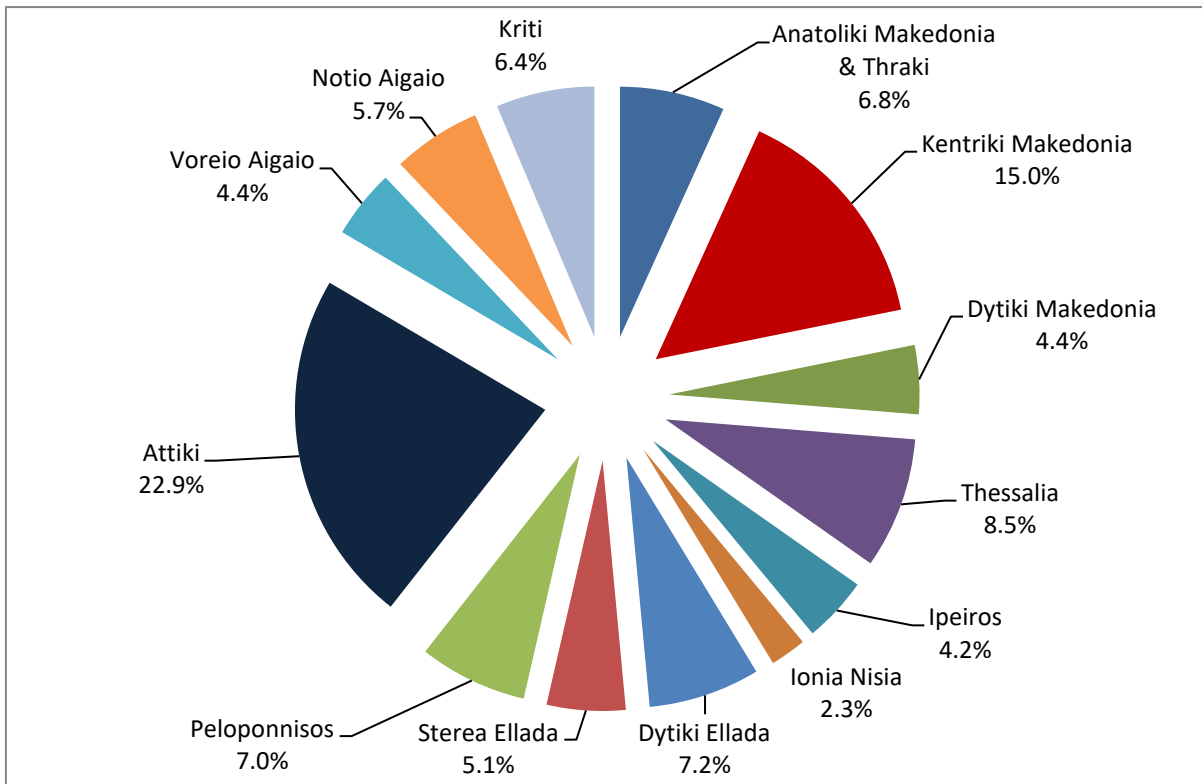
<i>By Type of school unit</i>						
School units	Number of school units			Teaching staff		
	2020/21	2021/22	Change (%)	2020/21	2021/22	Change (%)
EPAL of the Ministry of Education and Religious Affairs	411	416	1.2	12,528	12,372	-1.2
EPAS of the Ministry of Labour and Social Affairs	50	50	0.0	1,400	1,412	0.9
EPAS of the Ministry of Rural Development and Food	6	6	0.0	63	44	-30.2
TOTAL	467	472	1.1	13,991	13,828	-1.2
<i>By Region</i>						
Region (NUTS 2)	Number of school units			Teaching staff		
	2020/21	2021/22	Change (%)	2020/21	2021/22	Change (%)
Anatoliki Makedonia, Thraki	31	32	3.2	926	928	0.2
Kentriki Makedonia	71	71	0.0	2,616	2,555	-2.3
Dytiki Makedonia	21	21	0.0	616	593	-3.7
Thessalia	39	40	2.6	1,187	1,207	1.7
Ipeiros	19	20	5.3	535	535	0.0
Ionia Nisia	11	11	0.0	265	256	-3.4
Dytiki Ellada	34	34	0.0	881	826	-6.2
Stereia Ellada	24	24	0.0	629	632	0.5
Peloponnisos	32	33	3.1	673	646	-4.0
Attiki	107	108	0.9	3,379	3,381	0.1
Voreio Aigaio	21	21	0.0	510	492	-3.5
Notio Aigaio	27	27	0.0	678	691	1.9
Kriti	30	30	0.0	1,096	1,086	-0.9
TOTAL	467	472	1.1	13,991	13,828	-1.2

* By virtue of Law 4763/2020, article 15, the school year 2021/2022 was the last year that EPA.S under the competency of the Ministry of Rural Development and Food operated for the completion of studies of those who were already studying in them.

⁶ Absent teachers are also included,

Absent teachers are the teachers with a fixed post in the school unit, who are absent for more than 20 days (due to illness, training, maternity leave, etc.) and their replacement is pending, as well as the teachers who are seconded to other administrative posts of the Ministry of Education and Religious Affairs or elsewhere.

Graph 5. Percentage distribution of school units by NUTS 2 Region, school year 2021/22



Graph 6. Teaching staff by NUTS 2 Region, school year 2021/22

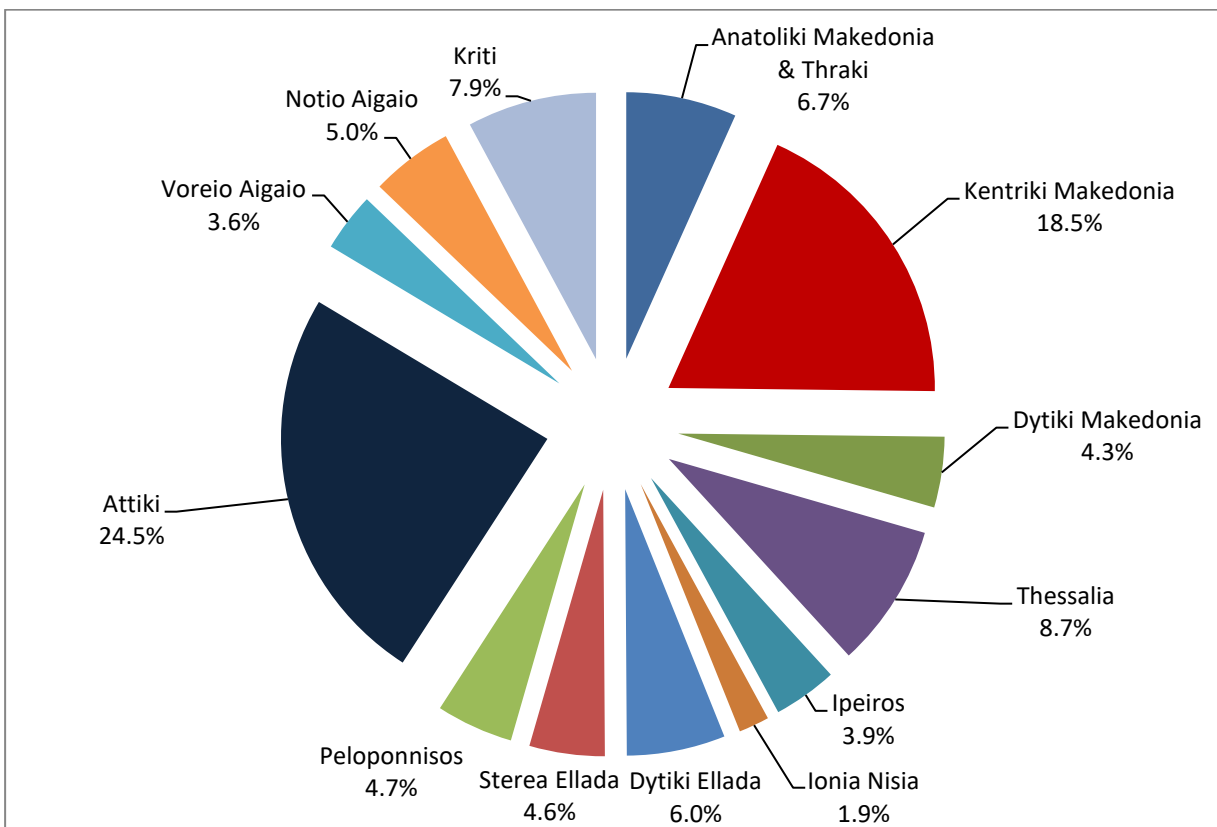


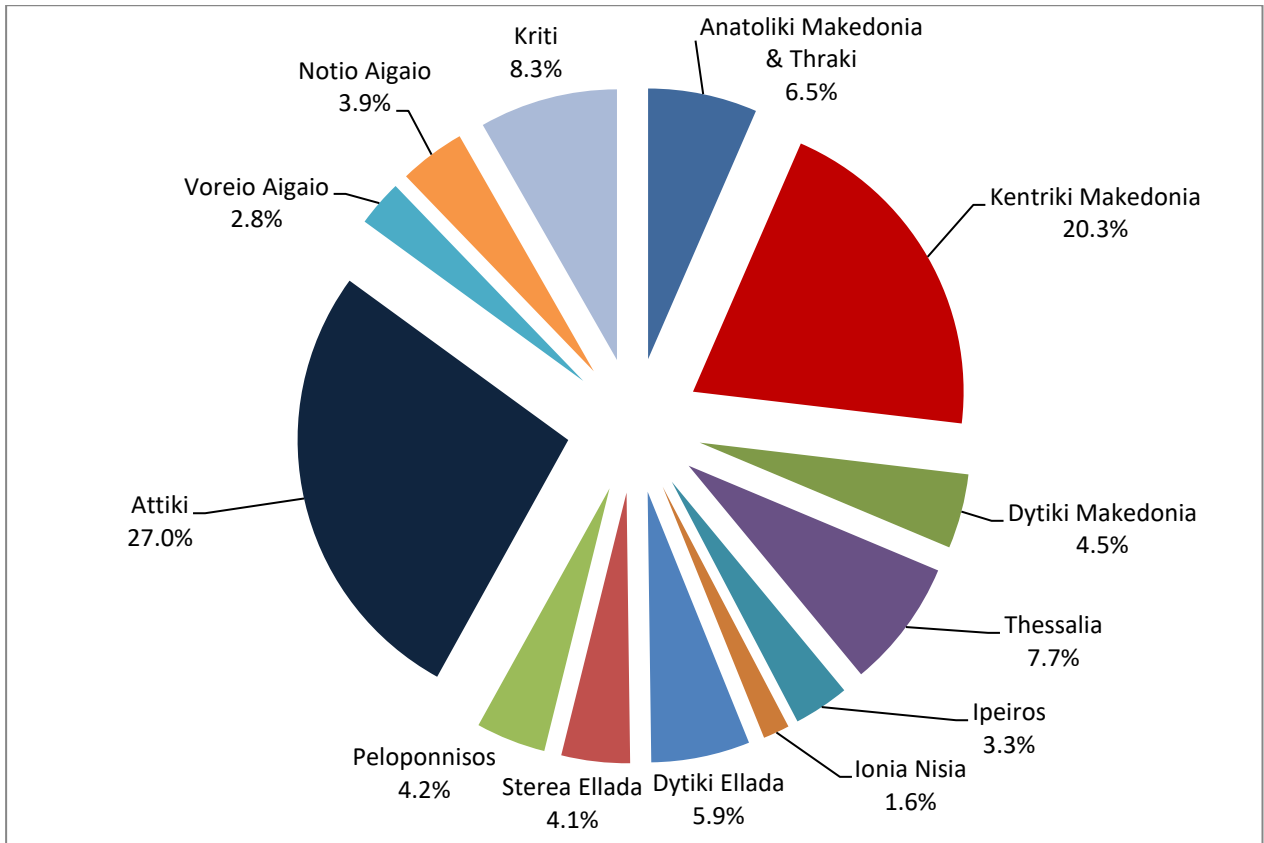
Table 16 presents data on pupils enrolled and graduates for school years 2020/2021 and 2021/2022.

Table 16. Pupils enrolled and graduates by type of school unit and NUTS 2 Region

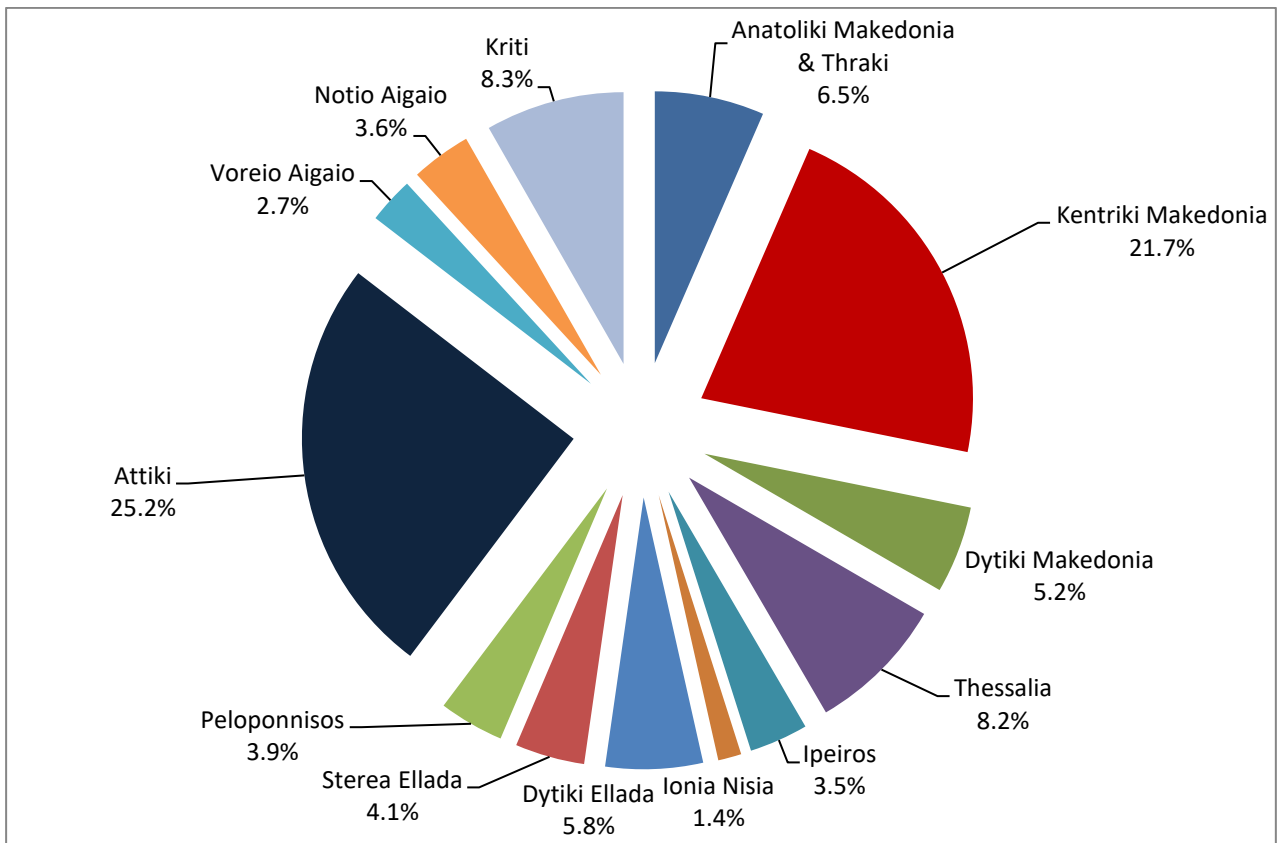
<i>By Type of School Unit</i>						
School units	Pupils enrolled			Graduates*		
	2020/21	2021/22	Change (%)	2020/21	2021/22	Change (%)
EPAL of the Ministry of Education and Religious Affairs	108,408	106,782	-1.5	32,175	31,799	-1.5
EPAS of the Ministry of Labour and Social Affairs	7,951	7,137	-10.2	2,935	2,819	-4.0
EPAS of the Ministry of Rural Development and Food	212	94	-55.7	160	94	-41.3
TOTAL	116,571	114,013	-2.2	35,270	34,712	-1.9
<i>By Region</i>						
Region (NUTS 2)	Pupils enrolled			Graduates		
	2020/21	2021/22	Change (%)	2020/21	2021/22	Change (%)
Anatoliki Makedonia, Thraki	7,505	7,440	-0.9	2,353	2,263	-3.8
Kentriki Makedonia	24,254	23,200	-4.3	7,379	7,518	1.4
Dytiki Makedonia	5,449	5,074	-6.9	1,735	1,800	3.7
Thessalia	8,916	8,753	-1.8	2,689	2,859	6.3
Ipeiros	4,096	3,774	-7.9	1,290	1,213	-6.0
Ionia Nisia	1,834	1,800	-1.9	472	481	1.9
Dytiki Ellada	6,963	6,723	-3.4	2,188	2,010	-9.0
Stereia Ellada	4,643	4,665	0.5	1,312	1,436	9.5
Peloponnisos	4,724	4,755	0.7	1,455	1,341	-7.8
Attiki	30,896	30,750	-0.5	9,122	8,734	-4.3
Voreio Aigaio	3,300	3,167	-4.0	1,038	951	-12.5
Notio Aigaio	4,505	4,499	-0.1	1,353	1,239	-8.4
Kriti	9,486	9,413	-0.8	2,884	2,867	-0.7
TOTAL	116,571	114,013	-2.2	35,270	34,712	-1.9

* By virtue of Law 4763/2020, article 15, the school year 2021/2022 was the last year that EPA.S under the competency of the Ministry of Rural Development and Food operated for the completion of studies of those who were already studying in them.

Graph 7. Pupils enrolled by NUTS 2 Region, school year 2021/22



Graph 8. Graduates by NUTS 2 Region, school year 2021/22



EXPLANATORY NOTES

Surveys on General and Vocational Secondary Education The surveys in Secondary General and Vocational Education are conducted on a yearly basis aiming at collecting data on the number of pupils enrolled, the school units and teaching staff. These surveys are carried out on an annual basis in all Member States of the European Union, with common standards and methods.

Secondary General Education includes lower and upper secondary schools of general education, ecclesiastical secondary schools and second chance schools.

Secondary Vocational Education includes:

- the Vocational Upper Secondary Schools (EPAL) and
- the Vocational Schools (EPAS)

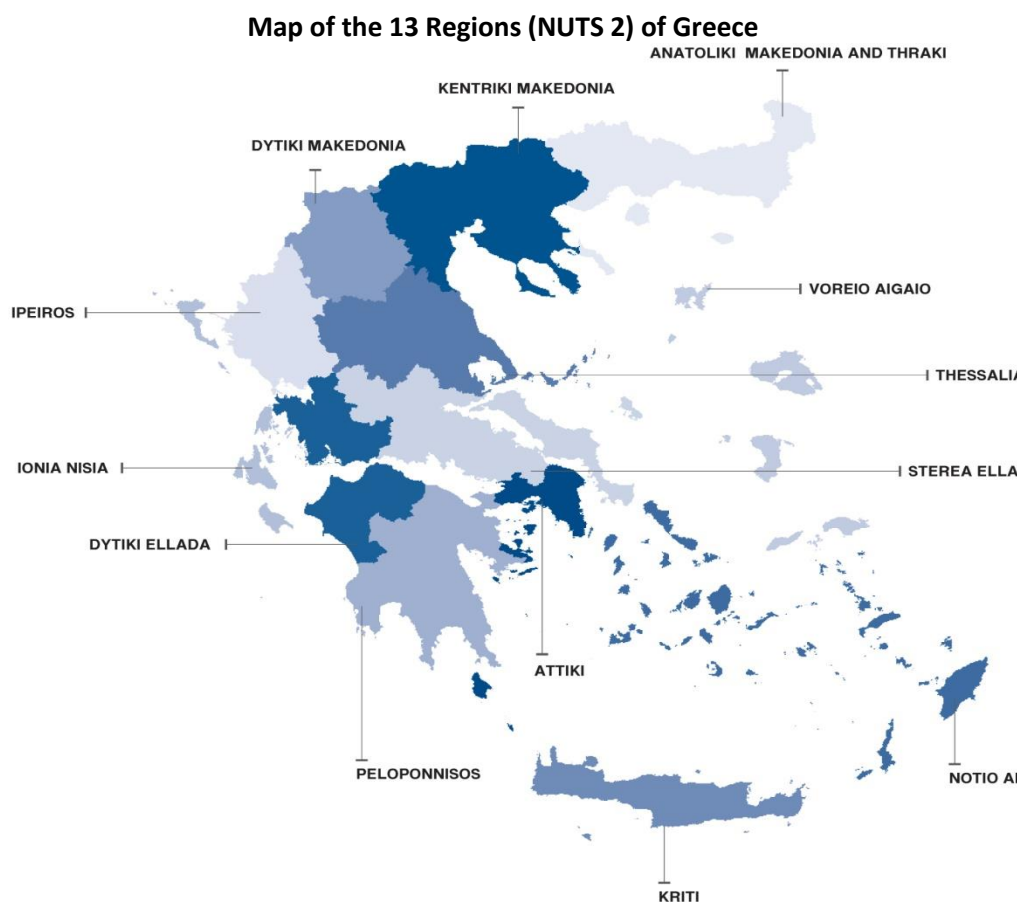
EPAL and EPAS are under the competency of the Ministry of Education and Religious Affairs, the Ministry of Rural Development and Food and the Ministry of Labour and Social Affairs.

Legal Frame The surveys are conducted by virtue of Regulation 452/2008 of the European Parliament and the Council and implementing Regulation 912/2013 of the European Commission.

Statistical Units The statistical unit is the school unit.

Coverage Greece total.

Geographical Classification The geographical classification is based on Nomenclature of Territorial Units for Statistics.



Dissemination of results	The data are posted on a yearly basis on the website of ELSTAT.
Reference period	The data of the surveys refer to the end of school year 2021/2022.
Methodology and coverage	<p>The Secondary Education surveys include the school units of the whole country and are carried out on an annual basis. Until the school year 2013/2014, the surveys on Secondary General Education used to be census yearly surveys and they were conducted by ELSTAT. From the school year 2014/2015 to the school year 2020/2021 the data of these surveys were collected as follows:</p> <ul style="list-style-type: none"> – As regards public school units the data were extracted from the e-platform “MySchool” of the Ministry of Education and Religious Affairs. – As regards private and public school units, which are not under the competency of the Ministry of Education and Religious Affairs, the data were collected via an annual census survey with questionnaires. <p>For the school year 2021/2022 data derived from the “MySchool” e-platform for both public and private secondary schools supervised by the Ministry of Education and Religious Affairs. Questionnaires were sent to the upper secondary vocational schools supervised by other Ministries and the second chance schools.</p>
References	More information, such as tables with the survey results, samples of questionnaires, etc, on the Survey on General Secondary Education can be found on the webpage of ELSTAT www.statistics.gr at the link: “Statistics” / Population and Social Conditions / Education / Lower Secondary Education Schools (Beginning – End of school year) or Upper Secondary Education Schools (Beginning – End of school year)” or “Secondary Vocational Education (Beginning – End of school year)” or “Second Chance Schools”.