

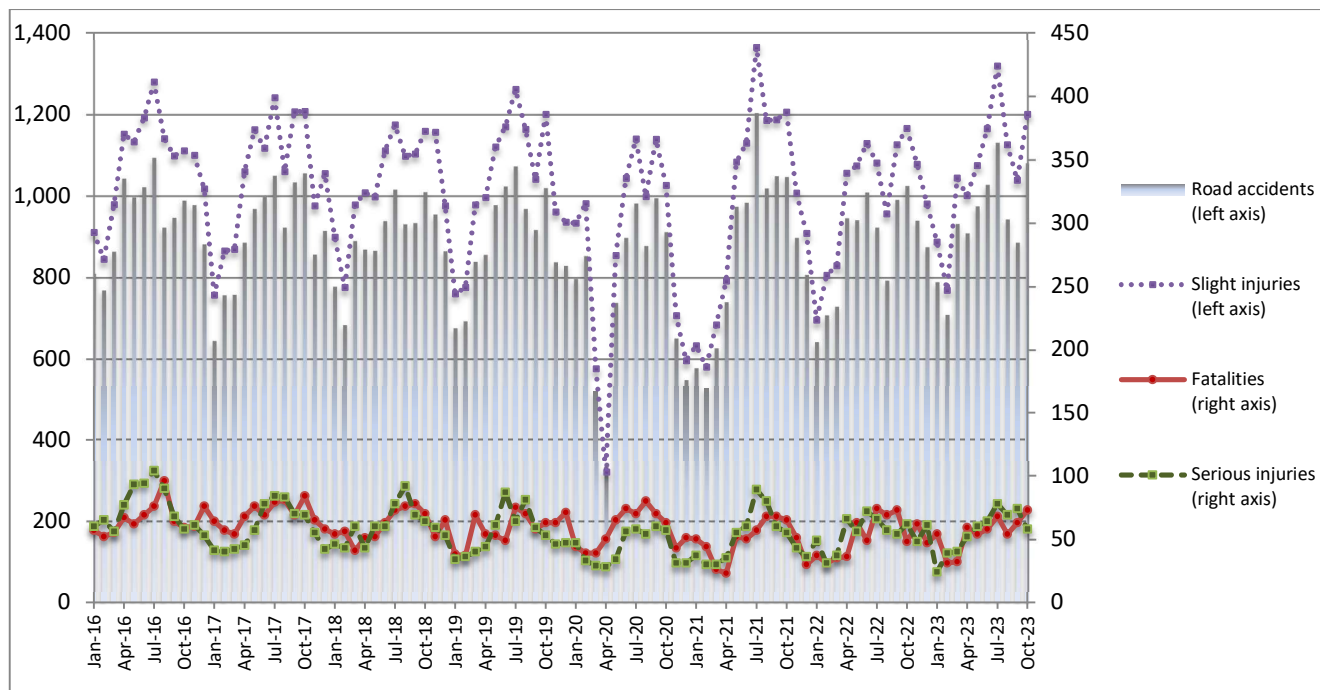


ROAD TRAFFIC ACCIDENTS: October 2023

The Hellenic Statistical Authority (ELSTAT) announces provisional¹ data from the survey on “Road Traffic Accidents” for October 2023. In particular, the road traffic accidents which occurred in Greece, resulting in death or injury, increased by 5.5% in comparison with the corresponding month of 2022 (1,081 road accidents in October 2023, against 1,025 road accidents in October 2022).

The casualties of the injury-causing accidents that occurred in October 2023 were as follows: 42 deaths, 58 serious injuries and 1,200 slight injuries. In contrast, in October 2022 the corresponding figures were: 73 deaths, 62 serious injuries and 1,165 slight injuries. Therefore, road traffic accident casualties in October 2023 decreased by 42.5% for deaths and by 6.5% for serious injuries and increased by 3.0% for slight injuries.

**Graph 1: Road traffic accidents and casualties,
January 2016 - October 2023**



Provisional data for the period November 2022 – October 2023

Information on methodological issues:

Sectoral Statistics Division
Transport Statistics Section
L. Miliara
Tel: +30 213 135 3095
e-mail: l.miliara@statistics.gr

Information for data provision:

Tel: +30 213 135 2022, 2308, 2310
e-mail: data.dissem@statistics.gr

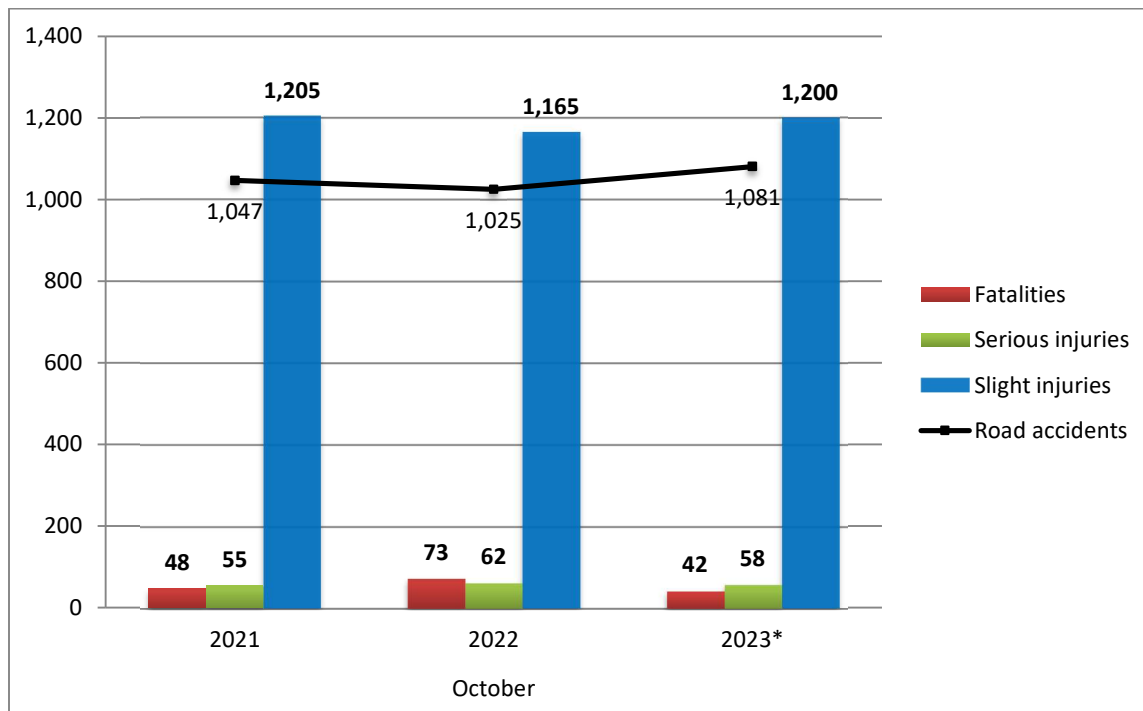
^[1] Data for the reference year is provisional until the finalization of the annual data, which takes place 12 months after the end of the reference year and is published in the corresponding announcement of the following year. During these 12 months the provisional data is updated on the basis of the data of the Road Accident Forms of that year which is transmitted to ELSTAT by Police Authorities (see explanatory notes).

Table 1: Road traffic accidents and casualties, October 2021 - 2023*

	October				
	2021	2022	2022/2021 (%)	2023*	2023*/2022 (%)
Road accidents	1,047	1,025	-2.1	1,081	5.5
Fatalities	48	73	52.1	42	-42.5
Total injuries	1,260	1,227	-2.6	1,258	2.5
Serious injuries	55	62	12.7	58	-6.5
Slight injuries	1,205	1,165	-3.3	1,200	3.0

* Provisional data

Graph 2: Road traffic accidents and casualties, October 2021 - 2023*



* Provisional data

Table 2: Road traffic accidents and casualties, by region and department, October 2022 and 2023*

Region and department	Road accidents			Fatalities			Serious injuries			Slight injuries		
	2022	2023*	%	2022	2023*	%	2022	2023*	%	2022	2023*	%
Greece Total	1,025	1,081	5.5	73	42	-42.5	62	58	-6.5	1,165	1,200	3.0
Anatoliki Makedonia and Thraki (East Macedonia and Thrace)	35	41	17.1	4	0	-100.0	4	4	0.0	42	56	33.3
Drama	9	4	-55.6	1	0		1	0		11	6	
Evros	9	20	122.2	1	0		1	2		14	22	
Kavala	8	6	-25.0	2	0		2	1		5	15	
Xanthi	3	7	133.3	0	0		0	0		3	9	
Rodopi	6	4	-33.3	0	0		0	1		9	4	
Kentriki Makedonia (Central Macedonia)	179	216	20.7	11	4	-63.6	6	9	50.0	207	255	23.2
Imathia	4	5	25.0	1	2		2	0		5	4	
Thessaloniki	153	187	22.2	5	1		2	7		175	222	
Kilkis	8	7	-12.5	1	0		1	1		8	7	
Pella	1	2	100.0	1	0		0	0		0	3	
Pieria	4	3	-25.0	1	0		0	0		4	3	
Serres	6	3	-50.0	2	1		0	1		12	4	
Chalkidiki	3	9	200.0	0	0		1	0		3	12	
Dytiki Makedonia (West Macedonia)	5	6	20.0	2	3	50.0	1	2	100.0	4	3	-25.0
Grevena	0	0	-	0	0		0	0		0	0	
Kastoria	0	1	-	0	0		0	0		0	1	
Kozani	5	4	-20.0	2	1		1	2		4	2	
Florina	0	1	-	0	2		0	0		0	0	
Ipeiros (Epirus)	15	15	0.0	6	5	-16.7	0	0	-	14	13	-7.1
Arta	2	4	100.0	2	2		0	0		1	3	
Thesprotia	2	1	-50.0	1	1		0	0		1	0	
Ioannina	9	7	-22.2	2	1		0	0		11	7	
Preveza	2	3	50.0	1	1		0	0		1	3	
Thessalia (Thessaly)	23	18	-21.7	2	3	50.0	5	4	-20.0	26	17	-34.6
Karditsa	6	6	0.0	1	0		0	2		8	5	
Larissa	10	7	-30.0	1	3		3	0		10	4	
Magnissia	5	5	0.0	0	0		2	2		4	8	
Trikala	2	0	-100.0	0	0		0	0		4	0	
Ionian Nisia (Ionian Islands)	15	8	-46.7	8	2	-75.0	0	0	-	16	9	-43.8
Zakynthos	2	0	-100.0	0	0		0	0		4	0	
Kerkyra	4	2	-50.0	3	1		0	0		2	1	
Kefallinia	4	3	-25.0	1	1		0	0		6	5	
Lefkada	5	3	-40.0	4	0		0	0		4	3	

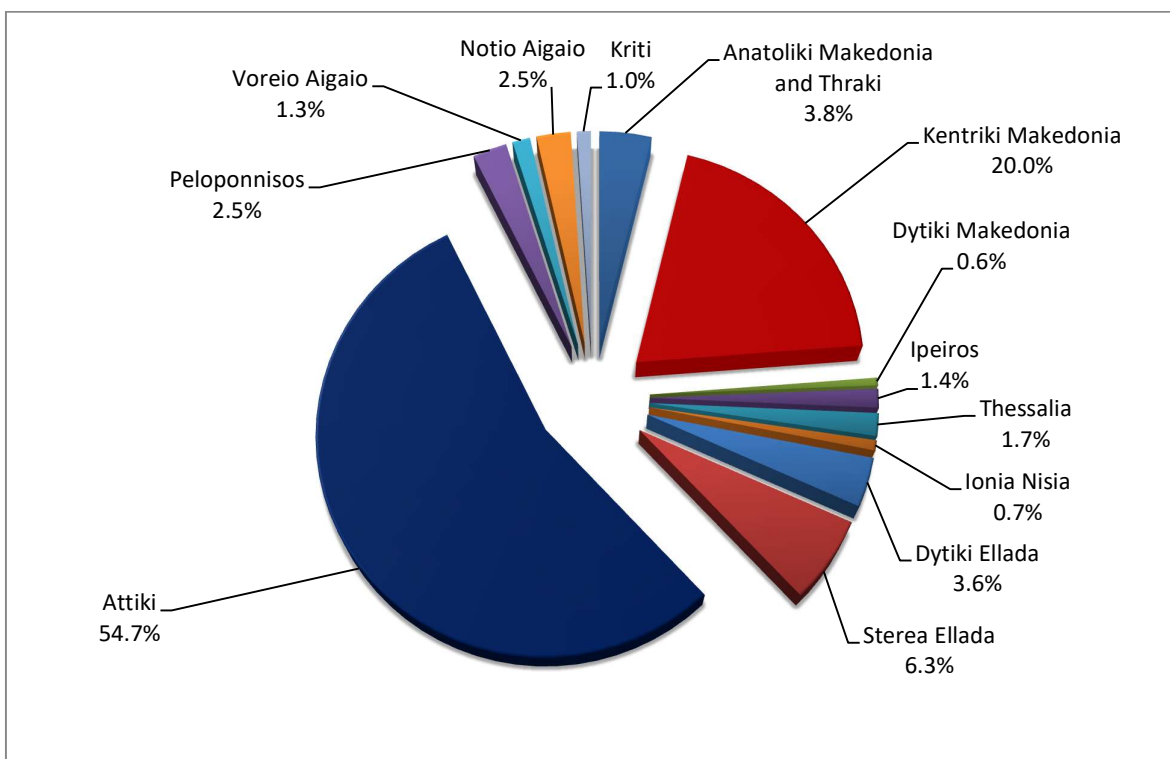
* Provisional data

Table 2: Road traffic accidents and casualties, by region and department, October 2022 and 2023* (Continued)

Region and department	Road accidents			Fatalities			Serious injuries			Slight injuries		
	2022	2023*	%	2022	2023*	%	2022	2023*	%	2022	2023*	%
Dytiki Ellada (West Greece)	41	39	-4.9	8	1	-87.5	9	6	-33.3	38	45	18.4
Etolia & Akarnania	21	22	4.8	3	1		2	4		22	27	
Achaia	14	10	-28.6	3	0		7	0		11	12	
Ilia	6	7	16.7	2	0		0	2		5	6	
Stereia Ellada	65	68	4.6	5	2	-60.0	6	8	33.3	75	73	-2.7
Viotia	6	12	100.0	0	1		0	1		7	12	
Evia	36	31	-13.9	2	0		0	2		43	36	
Evrytania	1	2	100.0	0	0		0	1		1	2	
Fthiotida	19	21	10.5	3	1		6	4		21	20	
Fokida	3	2	-33.3	0	0		0	0		3	3	
Attiki (Attica)	548	591	7.8	12	14	16.7	17	18	5.9	635	647	1.9
Peloponnisos (Peloponnese)	33	27	-18.2	4	3	-25.0	2	3	50.0	41	28	-31.7
Argolida	13	5	-61.5	2	0		2	0		11	6	
Arkadia	4	3	-25.0	0	1		0	1		7	2	
Korinthia	9	8	-11.1	0	1		0	2		12	6	
Lakonia	0	5	-	0	0		0	0		0	6	
Messinia	7	6	-14.3	2	1		0	0		11	8	
Voreio Aigaio (North Aegean)	17	14	-17.6	2	1	-50.0	3	2	-33.3	20	15	-25.0
Lesvos	10	12	20.0	2	1		2	1		12	14	
Samos	5	2	-60.0	0	0		1	1		6	1	
Chios	2	0	-100.0	0	0		0	0		2	0	
Notio Aigaio (South Aegean)	32	27	-15.6	6	1	-83.3	4	2	-50.0	31	30	-3.2
Dodekanissos	14	18	28.6	3	0		3	1		16	21	
Kyklades	18	9	-50.0	3	1		1	1		15	9	
Kriti (Crete)	17	11	-35.3	3	3	0.0	5	0	-100.0	16	9	-43.8
Iraklio	7	6	-14.3	1	1		1	0		6	6	
Lassithi	2	3	50.0	0	1		0	0		3	2	
Rethymno	5	0	-100.0	1	0		4	0		3	0	
Chania	3	2	-33.3	1	1		0	0		4	1	

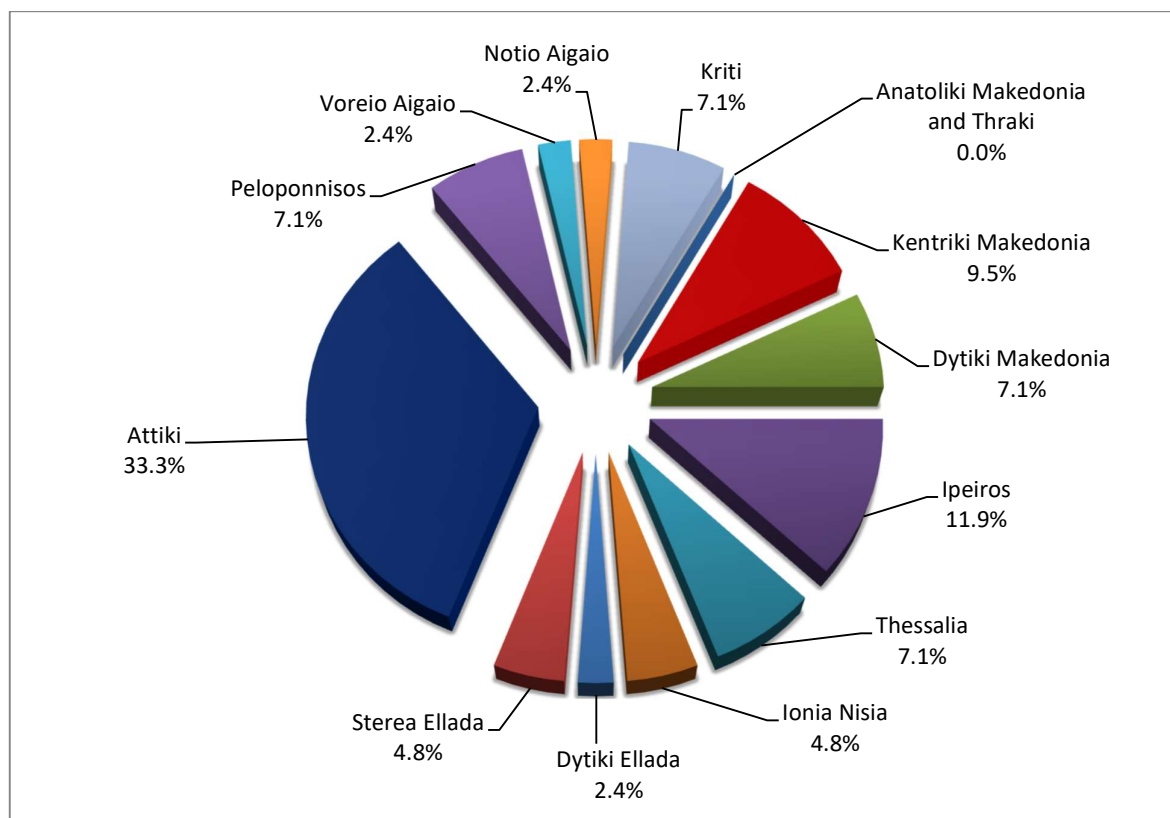
* Provisional data

Graph 3: Road traffic accidents by region, October 2023 *



* Provisional data

Graph 4: Fatalities by region, October 2023 *

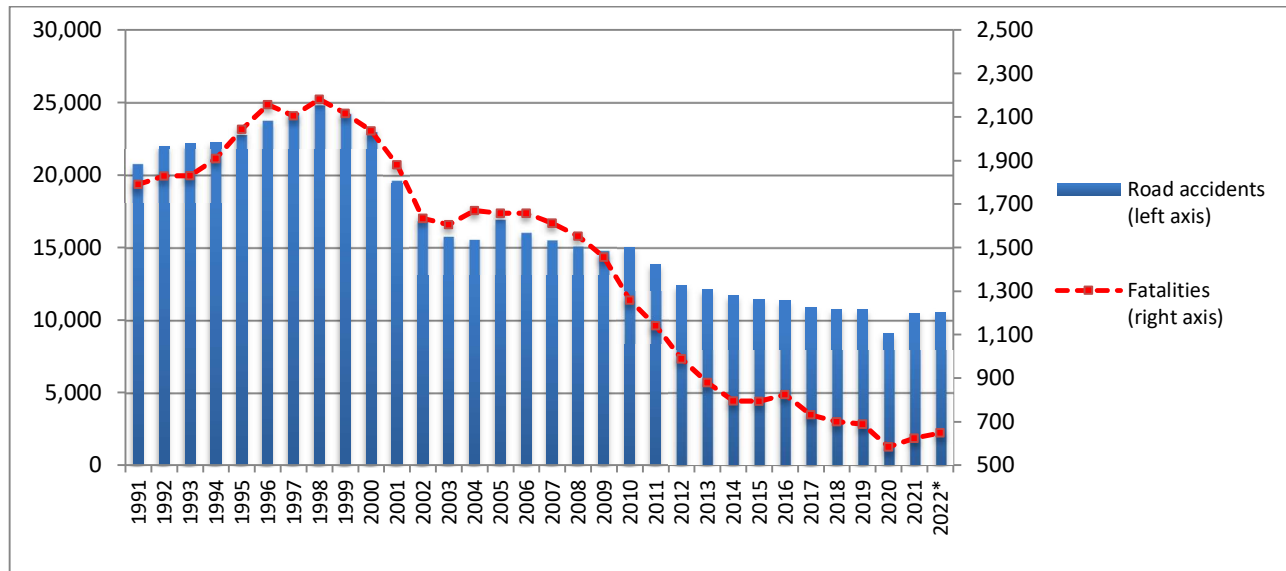


* Provisional data

Table 3: Road traffic accidents and casualties for the period January - October 2021, 2022 and 2023*

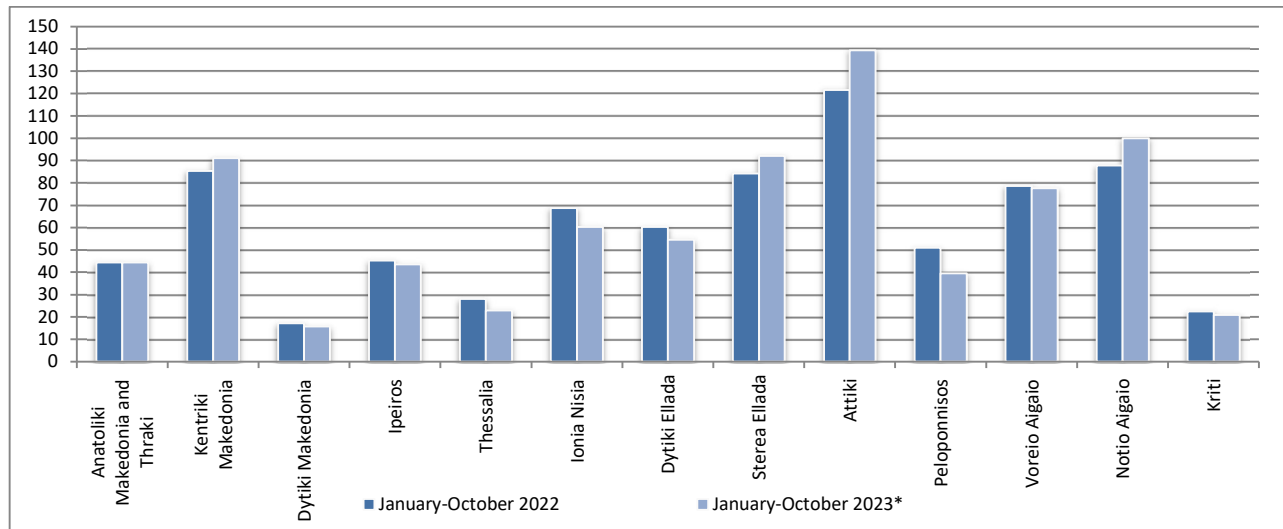
	2021		2022		2023 *
	January - October	Total year	January - October	Total year*	January - October
Road Accidents	8,749	10,454	8,707	10,522	9,383
<i>Annual Change (%)</i>			-0.5	0.7	7.8
Fatalities	515	624	546	648	521
<i>Annual Change (%)</i>			6.0	3.8	-4.6
Serious injuries	531	610	550	659	558
<i>Annual Change (%)</i>			3.6	8.0	1.5
Slight injuries	9,833	11,746	9,907	11,963	10,616
<i>Annual Change (%)</i>			0.8	1.8	7.2

Graph 5: Total road traffic accidents and fatalities, 1991-2022*



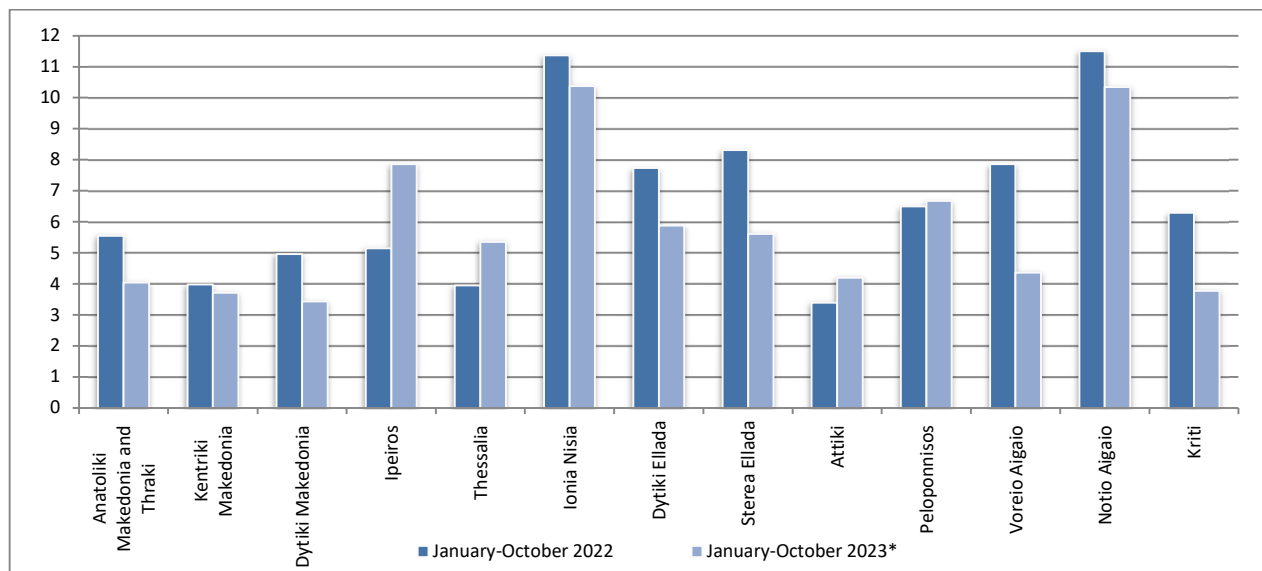
* Provisional data for the period November 2022 – December 2022

Graph 6: Road traffic accidents per 100,000 inhabitants for the period January - October 2022 and 2023*

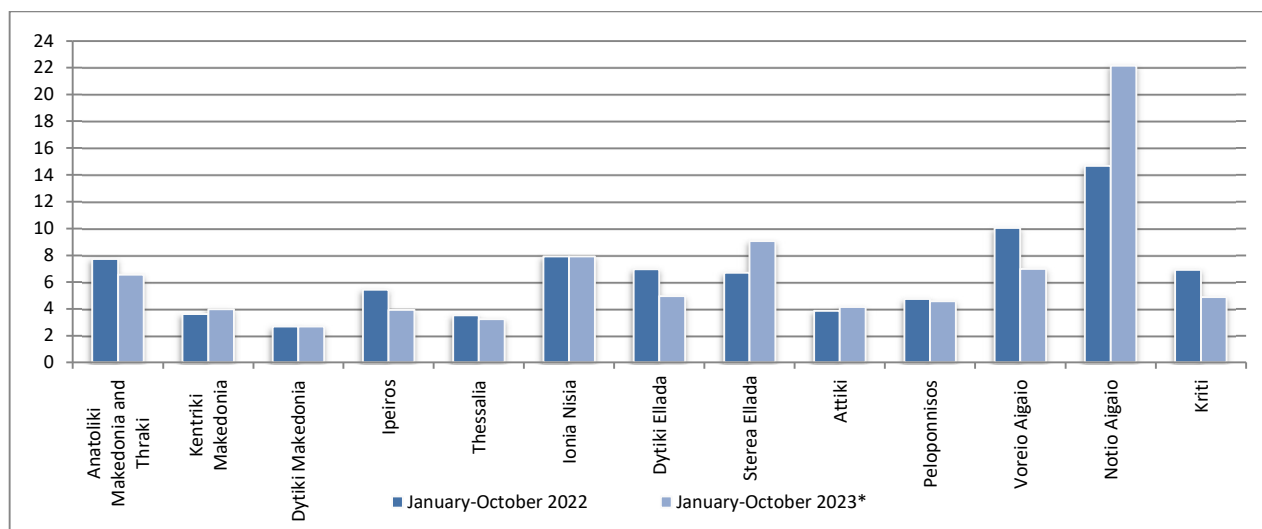


* Provisional data

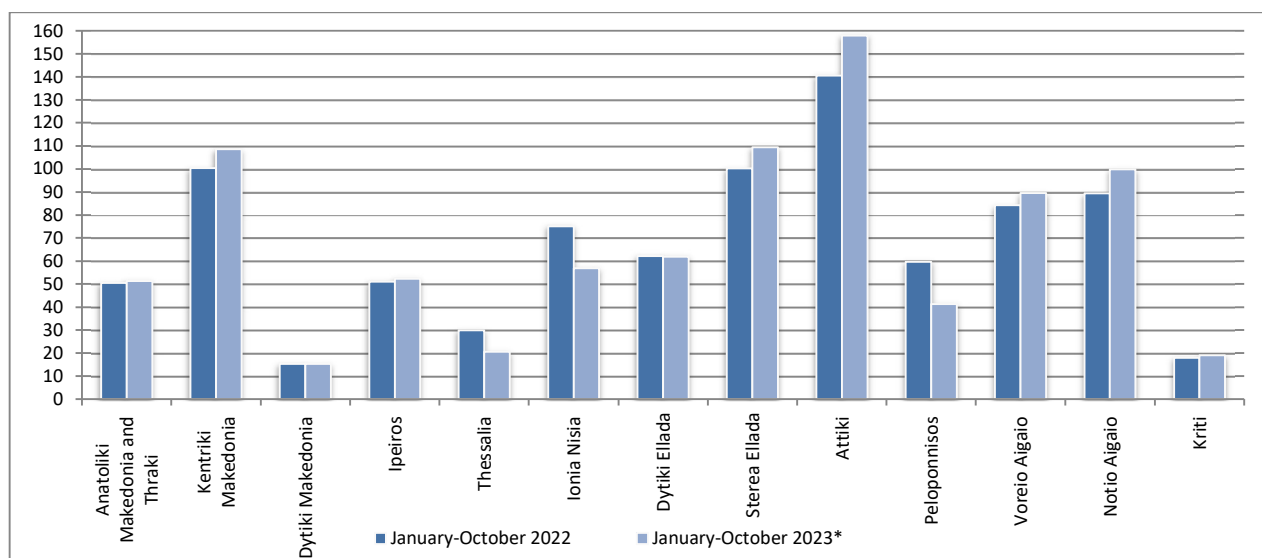
Graph 7: Fatalities per 100,000 inhabitants for the period January - October 2022 and 2023*



Graph 8: Serious injuries per 100,000 inhabitants for the period January - October 2022 and 2023*



Graph 9: Slight injuries per 100,000 inhabitants for the period January - October 2022 and 2023*



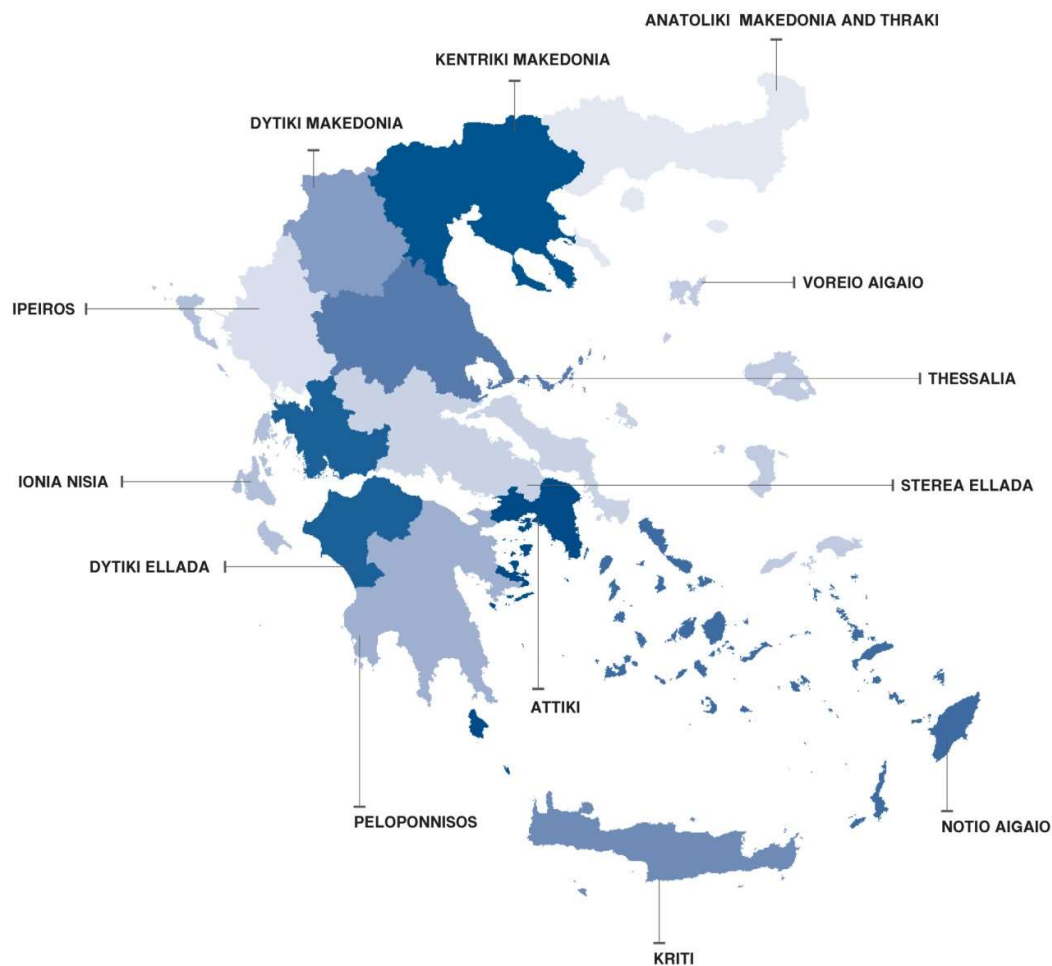
* Provisional data

EXPLANATORY NOTES

Survey on Road Traffic Accidents The Survey on Road Traffic Accidents is conducted on a monthly basis and it records, for each region (see map) and department of Greece and for each month separately, the number of accidents resulting in death or injury, as well as the number of persons injured by categories (drivers, passengers, pedestrians).

On a yearly basis, road traffic accidents are further analyzed. The competent agencies for filling in/collecting the forms on road accidents are the local Police Authorities and the local Port Authorities of Greece.

The lower level of analysis for the place where an injury road accident occurred is the settlement. Data are collected on a monthly basis. The main variables are the following: place of accident, kind of road, casualties, conditions of road surface and type of road.



Legal basis The Survey on Road Traffic Accidents is governed by Council Decision 93/704 of the European Community.

Reference period Monthly.

Availability of data Provisional data are available 2 months after the reference month.
Final data are available 12 months after the reference year.

Definitions **Road accident** (injury accident): Any accident involving at least one road motor vehicle in motion on a public road or square to which the public has access (excluding yards, industrial sites or vehicle depot of public transport enterprises), resulting in at least one injured or killed person. Accidents with only material damages are not included.

Fatality (Death): Any person killed immediately or dying within 30 days as a result of an injury accident (This national definition applies since 01.01.1996)

Person injured: Any person who sustained an injury as result of an injury accident, and who normally needs medical treatment.

Serious injury: Any person who sustained an injury as result of an injury accident, such as brain damages, mutilation, multiple injuries, which may result in lack of awareness or which are life-threatening.

Slight injury: Any person injured who sustained minor and not life-threatening injuries.

Vehicle: Include motor vehicles, trolleybuses, motorcycles, bicycles, motorbikes, agricultural and road making machines, animal and hand-drawn vehicles. Railway vehicles are excluded, unless the road accident involves at least one of the aforementioned types of vehicles and therefore, railway vehicles are considered vehicles.

Methodology The forms of the survey are filled in by the local Police Authorities and the local Port Authorities as well.

References More information about Road Traffic Accidents is available on ELSTAT's website and more specifically at the link: <https://www.statistics.gr/en/statistics/-/publication/SDT03/->.