



ISSUING OF MOTOR VEHICLE LICENSES: DECEMBER 2024

The Hellenic Statistical Authority announces that in December 2024, 14,815 road motor cars (both new and used from abroad) were put into circulation for the first time, recording a decrease 4.9% compared with the corresponding month of 2023 when the number of road motor cars was 15,581. In December 2023, a 30.1% increase had been observed in comparison with the corresponding month of 2022 (Table 1, Graphs 1,2,3,5). A total number of 9,314 new cars were put into circulation in December 2024 compared with 8,919 in December 2023, recording an increase 4.4%.

The new motorcycles over 50cc (both new and used from abroad) that were put into circulation for the first time in December 2024 amounted to 3,277, against 2,543 in December 2023, thus recording a 28.9% increase. In December 2023, a 0.2% decrease had been observed in comparison with the corresponding month of 2022 (Table 1, Graph 4). Out of the above motorcycles 3,166 were new, while the corresponding figure in December 2023 was 2,413, recording a 31.2% increase.

During the period January - December 2024, 243,796 road motor cars (both new and used from abroad) were put into circulation for the first time, representing an increase of 2.4% compared to the corresponding period of 2023 when the number of road motor cars was 238,117. During the period January - December 2023 an increase of 16.1% had been observed in comparison with the corresponding period of 2022 (Table 3, Graphs 6,7). Out of the above number of road motor cars that were put into circulation from January to December 2024 148,276 were new, while the corresponding number during the respective period of 2023 was 145,667, recording an increase of 1.8%.

During the period January - December 2024 the circulation of new motorcycles over 50cc (both new and used from abroad) amounted to 81,897 against 69,425 in the respective period of 2023, thus representing an 18.0% increase. An increase of 15.9% had been observed during the period January - December 2023 in comparison with the corresponding period of 2022 (Table 3, Graphs 6,7). A total number of 77,979 new motorcycles were put into circulation, from January to December 2024, compared with 65,814 during the corresponding period of 2023, recording an 18.5% increase.

Information on methodological issues:

Sectoral Statistics Division

Transport Statistics Section

Elpida Kleftogianni, Konstantinos Menexes

Tel: +30 213 135 3087, +30 213 135 3055

e-mail: e.kleftogianni@statistics.gr, k.menexes@statistics.gr

Information for data provision:

Tel: +30 213 135 2022

e-mail: data.dissem@statistics.gr

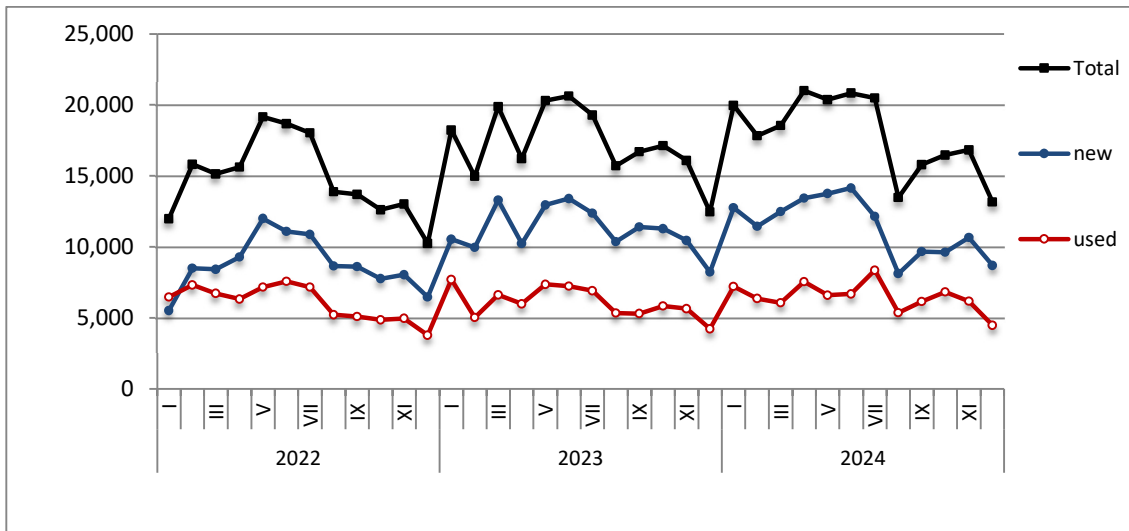
Table 1. Road motor vehicles, both new and used, put into circulation for the first time in Greece: December 2022 - 2024

Category of Road Motor Vehicles	December									Change (%)					
	2022			2023			2024			2023/2022			2024/2023		
	Total	New	Used	Total	New	Used	Total	New	Used	Total	New	Used	Total	New	Used
Greece, total															
Road Motor Vehicles,total	14,523	9,783	4,740	18,124	11,332	6,792	18,092	12,480	5,612	24.8%	15.8%	43.3%	-0.2%	10.1%	-17.4%
1. Road motor cars	11,976	7,343	4,633	15,581	8,919	6,662	14,815	9,314	5,501	30.1%	21.5%	43.8%	-4.9%	4.4%	-17.4%
Passenger Cars	10,239	6,471	3,768	12,457	8,230	4,227	13,173	8,699	4,474	21.7%	27.2%	12.2%	5.7%	5.7%	5.8%
Buses	153	68	85	156	21	135	144	40	104	2.0%	-69.1%	58.8%	-7.7%	90.5%	-23.0%
Lorries	1,584	804	780	2,968	668	2,300	1,498	575	923	87.4%	-16.9%	194.9%	-49.5%	-13.9%	-59.9%
2. Motorcycles > 50 cc	2,547	2,440	107	2,543	2,413	130	3,277	3,166	111	-0.2%	-1.1%	21.5%	28.9%	31.2%	-14.6%
Prefecture of Attica															
Road Motor Vehicles,total	8,893	6,664	2,229	10,154	7,527	2,627	10,425	8,184	2,241	14.2%	13.0%	17.9%	2.7%	8.7%	-14.7%
1. Road motor cars	7,447	5,252	2,195	8,644	6,064	2,580	8,666	6,462	2,204	16.1%	15.5%	17.5%	0.3%	6.6%	-14.6%
Passenger Cars	6,602	4,713	1,889	7,567	5,751	1,816	8,001	6,112	1,889	14.6%	22.0%	-3.9%	5.7%	6.3%	4.0%
Buses	58	12	46	67	9	58	85	29	56	15.5%	-25.0%	26.1%	26.9%	222.2%	-3.4%
Lorries	787	527	260	1,010	304	706	580	321	259	28.3%	-42.3%	171.5%	-42.6%	5.6%	-63.3%
2. Motorcycles > 50 cc	1,446	1,412	34	1,510	1,463	47	1,759	1,722	37	4.4%	3.6%	38.2%	16.5%	17.7%	-21.3%

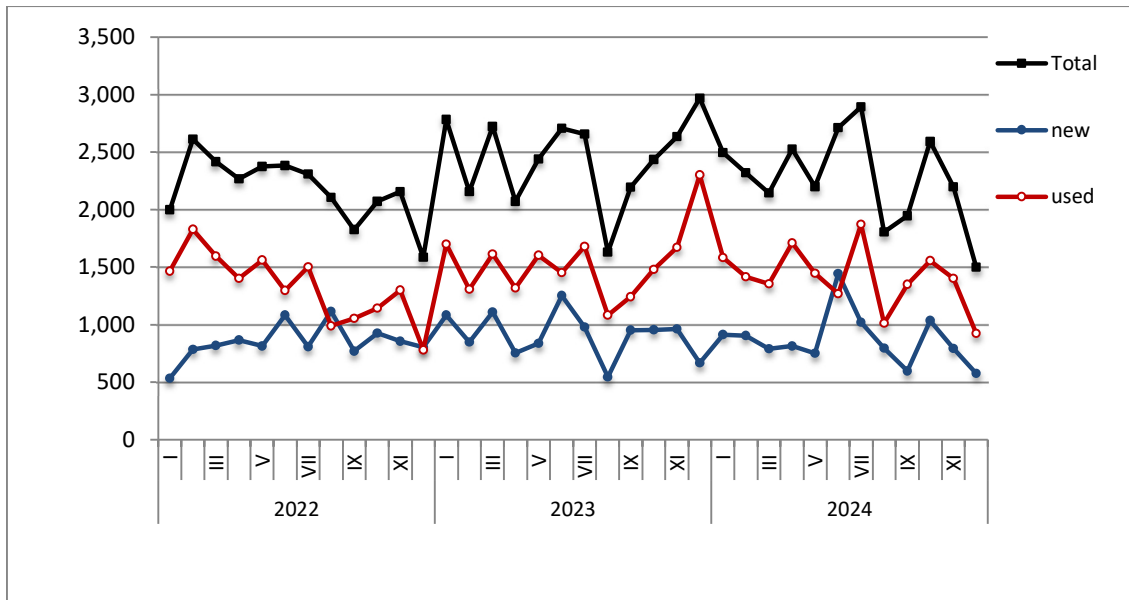
Table 2. Road motor vehicles, both new and used, put into circulation for the first time in Greece: January 2023 – December 2024

Category of Road Motor Vehicles	Average Jan. 2023 - Dec. 2023			Average Jan. 2024 - Dec. 2024			Change (%)		
	Average Jan. 2024 - Dec. 2024 / Average Jan. 2023 - Dec. 2023								
	Total	New	Used	Total	New	Used	Total	New	Used
Greece, total									
Road Motor Vehicles,total	25,628	17,624	8,004	27,141	18,854	8,287	5.9%	7.0%	3.5%
1. Road motor cars	19,843	12,140	7,703	20,316	12,356	7,960	2.4%	1.8%	3.3%
Passenger Cars	17,298	11,206	6,092	17,897	11,415	6,482	3.5%	1.9%	6.4%
Buses	96	22	74	142	72	70	47.9%	227.3%	-5.4%
Lorries	2,449	912	1,537	2,277	869	1,408	-7.0%	-4.7%	-8.4%
2. Motorcycles > 50 cc	5,785	5,484	301	6,825	6,498	327	18.0%	18.5%	8.6%

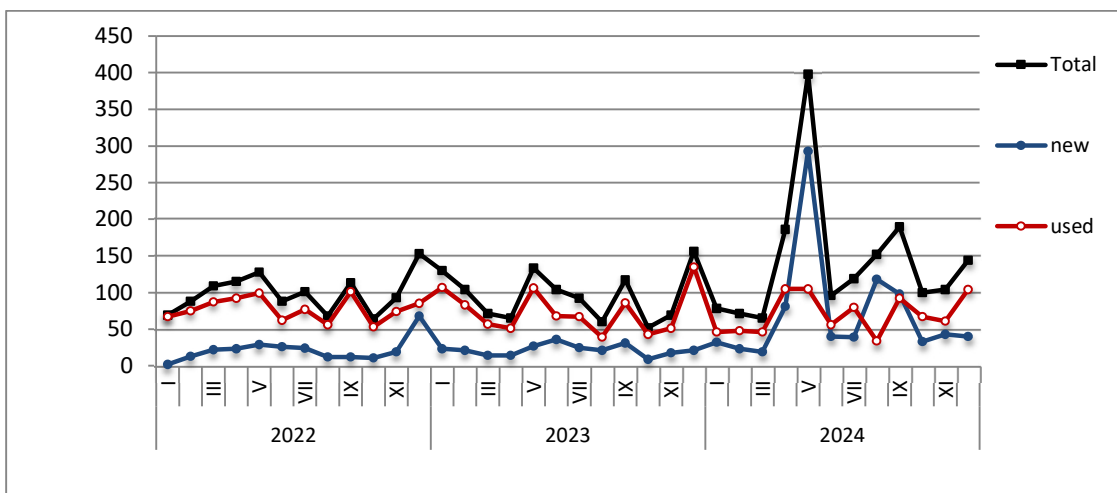
Graph 1: Passenger Cars (January 2022 – December 2024)



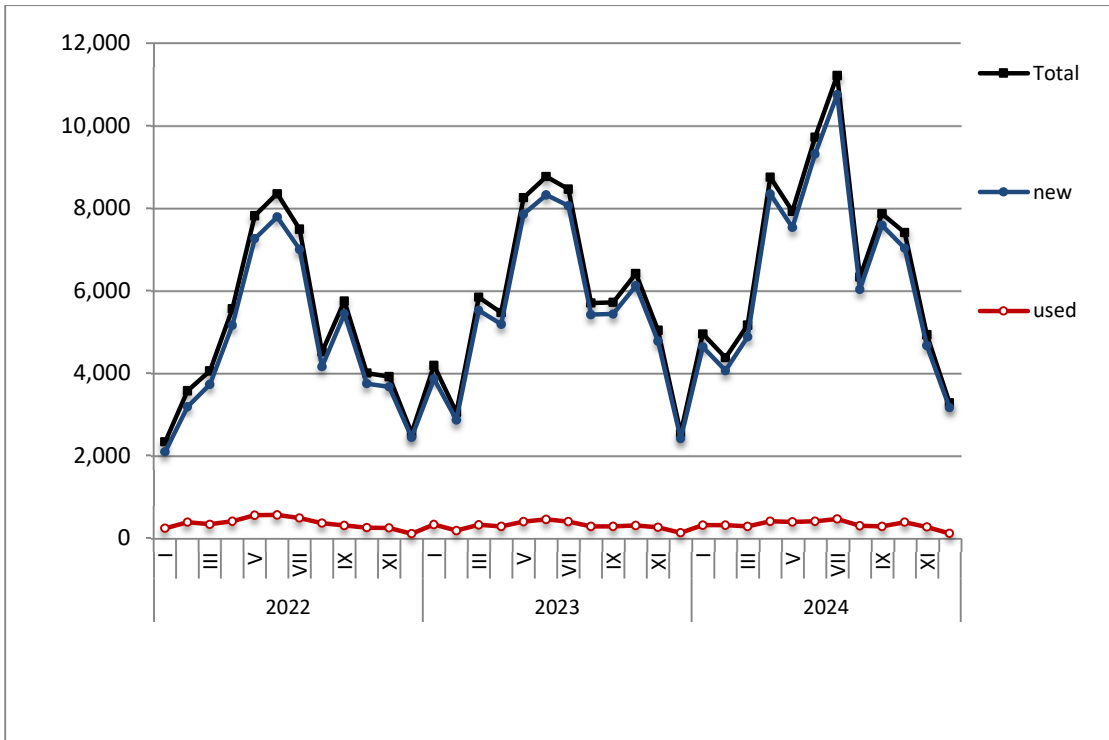
Graph 2: Lorries (January 2022 – December 2024)



Graph 3: Buses (January 2022 – December 2024)



Graph 4: Motorcycles (January 2022 – December 2024)



Graph 5: New Registrations of Motor Vehicles (December 2024)

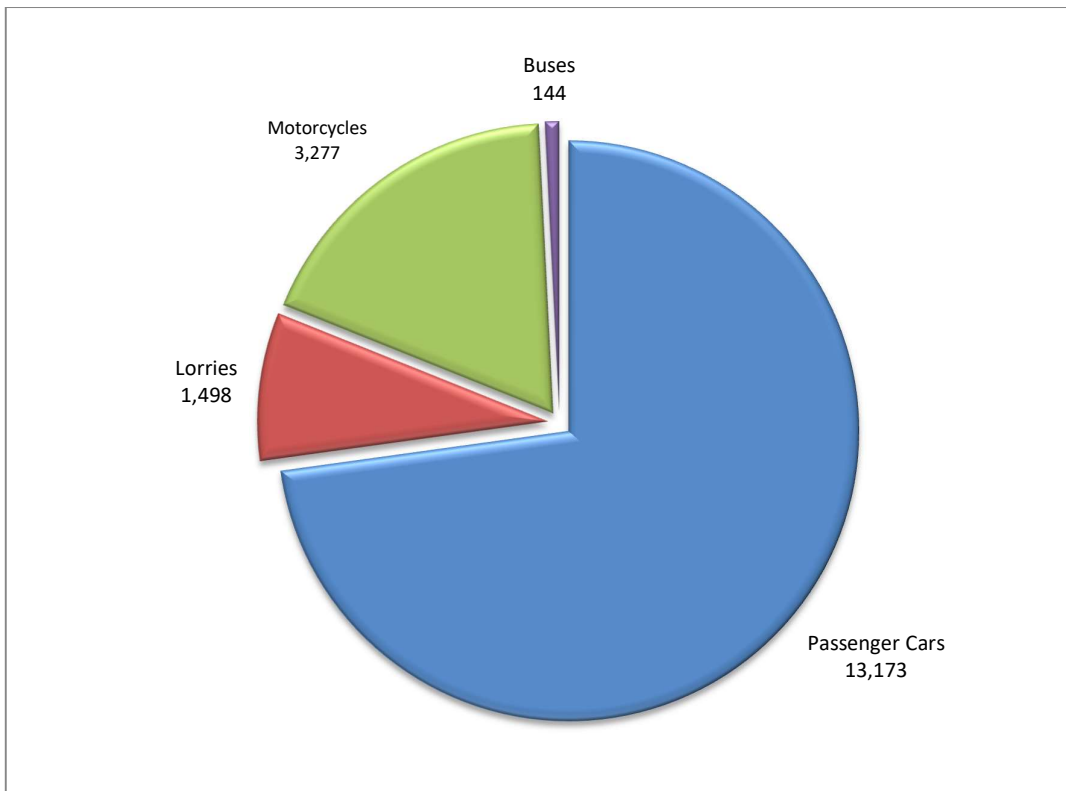
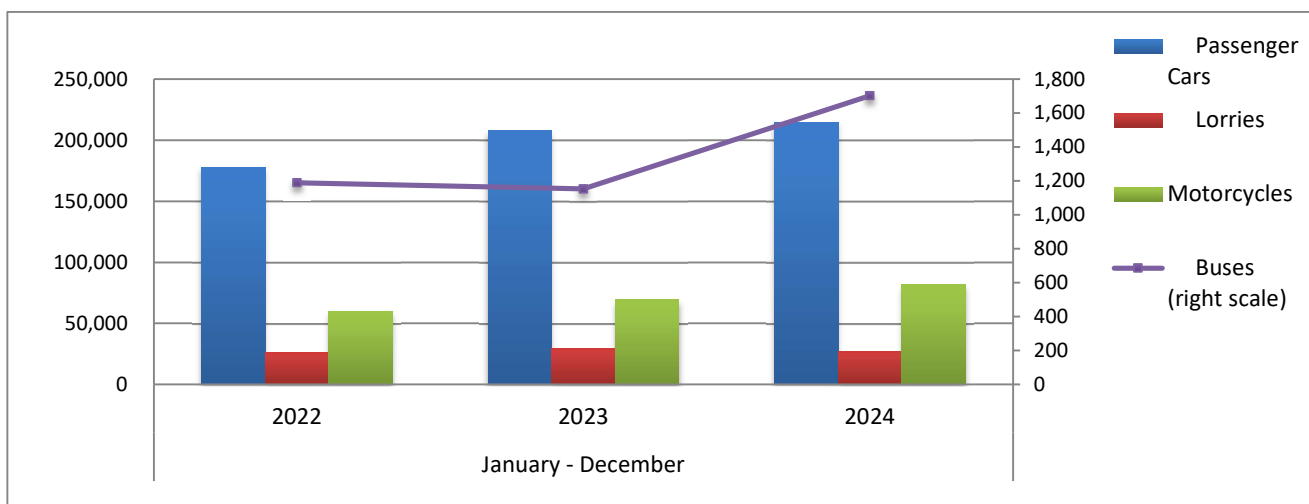


Table 3. Road motor vehicles, both new and used, put into circulation for the first time in Greece: January - December, years 2022 till 2024															
Category of Road Motor Vehicles	January - December									Change (%)					
	2022			2023			2024			2023/2022			2024/2023		
	Total	New	Used	Total	New	Used	Total	New	Used	Total	New	Used	Total	New	Used
Greece, total															
Road Motor Vehicles,total	265,026	171,323	93,703	307,542	211,481	96,061	325,693	226,255	99,438	16.0%	23.4%	2.5%	5.9%	7.0%	3.5%
1. Road motor cars	205,130	115,661	89,469	238,117	145,667	92,450	243,796	148,276	95,520	16.1%	25.9%	3.3%	2.4%	1.8%	3.3%
Passenger Cars	177,844	105,219	72,625	207,573	134,465	73,108	214,769	136,984	77,785	16.7%	27.8%	0.7%	3.5%	1.9%	6.4%
Buses	1,189	261	928	1,153	260	893	1,703	859	844	-3.0%	-0.4%	-3.8%	47.7%	230.4%	-5.5%
Lorries	26,097	10,181	15,916	29,391	10,942	18,449	27,324	10,433	16,891	12.6%	7.5%	15.9%	-7.0%	-4.7%	-8.4%
2. Motorcycles > 50 cc	59,896	55,662	4,234	69,425	65,814	3,611	81,897	77,979	3,918	15.9%	18.2%	-14.7%	18.0%	18.5%	8.5%
Prefecture of Attica															
Road Motor Vehicles,total	144,039	105,949	38,090	171,746	133,263	38,483	176,098	138,523	37,575	19.2%	25.8%	1.0%	2.5%	3.9%	-2.4%
1. Road motor cars	116,870	79,871	36,999	139,608	102,199	37,409	138,500	101,985	36,515	19.5%	28.0%	1.1%	-0.8%	-0.2%	-2.4%
Passenger Cars	104,601	72,769	31,832	126,953	95,313	31,640	126,476	95,035	31,441	21.4%	31.0%	-0.6%	-0.4%	-0.3%	-0.6%
Buses	434	90	344	576	155	421	999	583	416	32.7%	72.2%	22.4%	73.4%	276.1%	-1.2%
Lorries	11,835	7,012	4,823	12,079	6,731	5,348	11,025	6,367	4,658	2.1%	-4.0%	10.9%	-8.7%	-5.4%	-12.9%
2. Motorcycles > 0 cc	27,169	26,078	1,091	32,138	31,064	1,074	37,598	36,538	1,060	18.3%	19.1%	-1.6%	17.0%	17.6%	-1.3%

Graph 6. New Motor Vehicles Circulation Licenses: January – December, years 2022 till 2024



Graph 7. New Registrations of Motor Vehicles: January – December 2024

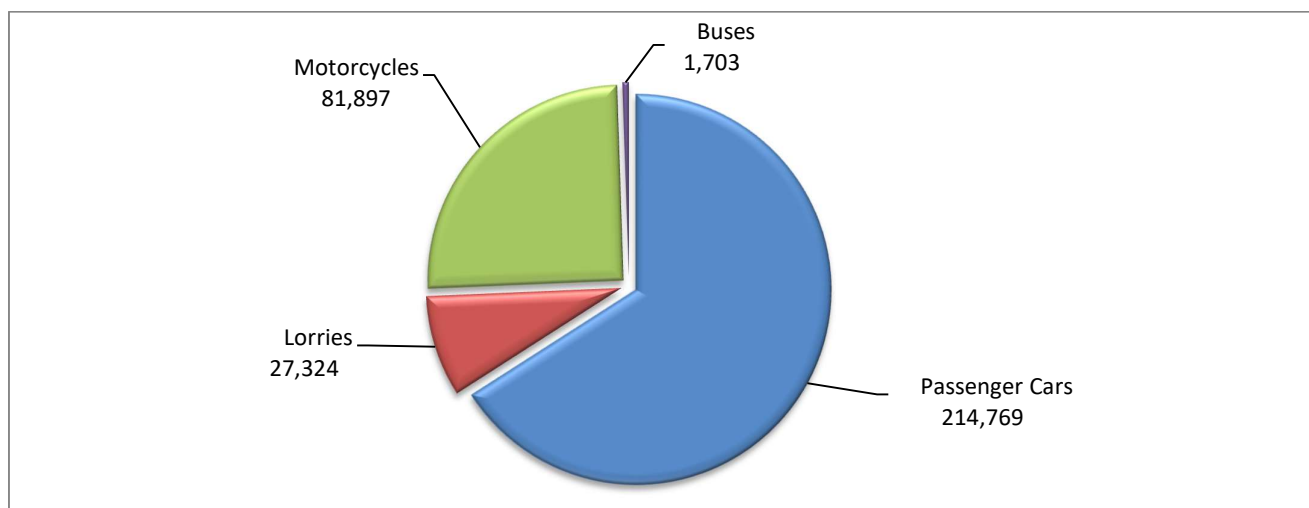


Table 4
Sales of new and used passenger cars by make: December 2024 and January - December 2024

Make	Passenger cars			
	December		January - December	
	new	used	new	used
ABARTH	-	-	6	2
ADRIA	-	-	1	6
ADRIA, ELIOS, SUN LIVING	-	-	3	-
ALFA ROMEO	42	27	315	433
ALPINA	-	-	4	2
ALPINE	-	-	-	2
AMBULANZ MOBILE	-	-	-	1
ASTON MARTIN	-	-	-	6
AUDI	251	88	4,369	1,469
BENTLEY	-	-	7	10
BINZ	-	-	-	2
BMW	776	176	6,749	2,749
BURSTNER	-	-	-	10
BYD	318	-	1,578	-
CAPRON	-	1	17	12
CARTHAGO	-	1	1	1
CHAUSSON	-	-	-	2
CHEVROLET	-	2	1	131
CHEVROLET, GMC, HOLDEN, BUICK, PONTIAC	-	-	-	1
CHRYSLER	-	-	-	1
CITROEN	138	209	2,704	3,317
CITROEN / DS	-	53	4,510	720
CUPRA	113	11	1,089	52
DACIA	562	89	3,414	1,803
DACIA, RENAULT	-	-	1	-
DAIHATSU	-	3	-	11
DETHLEFFS	-	-	-	6
DFSK, SERES, SOKON, FENGON	-	-	26	-
DODGE	-	2	-	10
DONGFENG	-	-	1	-
DS	9	15	523	143
E-GO	-	-	-	1
EURA MOBIL	-	-	1	1
FERRARI	-	5	2	22
FIAT	107	135	5,160	3,127
FORD	240	283	3,222	5,209
FORD ²	-	-	1	-
FORD, HYMER	-	-	-	1
HOBBY	-	-	1	2
HONDA	45	36	441	626
HUMMER	-	-	-	1
HYMER	-	-	4	8
HYUNDAI	479	295	8,890	6,580
INEOS	-	-	-	1
INFINITI	-	-	-	75
IVECO S.p.a/LAIKA CARAVANS SpA	-	-	-	1
JAGUAR	11	19	92	232
JEEP	163	40	2,028	579

Table 4 (cont)
Sales of new and used passenger cars by make: December 2024 and January - December 2024

Make	Passenger cars			
	December		January - December	
	new	used	new	used
JIANGSU JEMELL	-	1	-	1
JUNEYAO	-	-	1	-
KABE	-	-	-	1
KERABOSS	-	-	3	-
KIA	203	55	4,771	1,469
KNAUS	-	-	-	8
KTM	-	-	-	1
LADA	-	-	-	4
LAMBORGHINI	-	1	2	15
LANCIA	-	-	-	24
LAND ROVER	41	43	579	706
LEAPMOTOR	24	-	50	-
LES DAUPHINS	-	-	-	1
LEXUS	57	6	471	59
LMC	-	-	-	1
LOTUS	1	-	6	4
LYNK&CO	34	2	62	13
MAN	-	-	-	1
MASERATI	2	1	22	26
MAXUS, LDV	-	-	4	-
MAZDA	67	14	1,850	314
MC LOUIS SPA	-	-	-	1
MCLAREN	-	-	-	3
MERCEDES	244	457	3,407	6,156
MERCEDES ¹	1	-	19	-
MG	4	1	171	12
MG, ROEWE	228	4	2,987	34
MINI	337	19	2,040	602
MITSUBISHI	5	52	421	1,027
MOBILVETTA DESIGN SpA	-	1	-	2
MORRIS	-	-	-	1
NISSAN	331	312	4,308	5,328
NISSAN ¹	-	-	12	-
OPEL	159	261	6,377	4,956
PEUGEOT	244	395	10,305	5,757
PEUGEOT ¹	-	-	1	-
PEUGEOT ²	10	-	76	-
PORSCHE	32	43	274	539
PSA AUTOMOBILES	-	-	-	2
RANGE ROVER	-	4	53	54
RENAULT	555	381	3,651	7,529
RENAULT ¹	-	-	2	-
RIMOR	-	-	-	2
ROLLER TEAM	1	-	4	1
ROLLS ROYCE	-	-	1	-
SAAB	-	-	-	2
SEA / MCLOUIS	-	-	-	1
SEA / MOBILVETTA	-	-	-	1

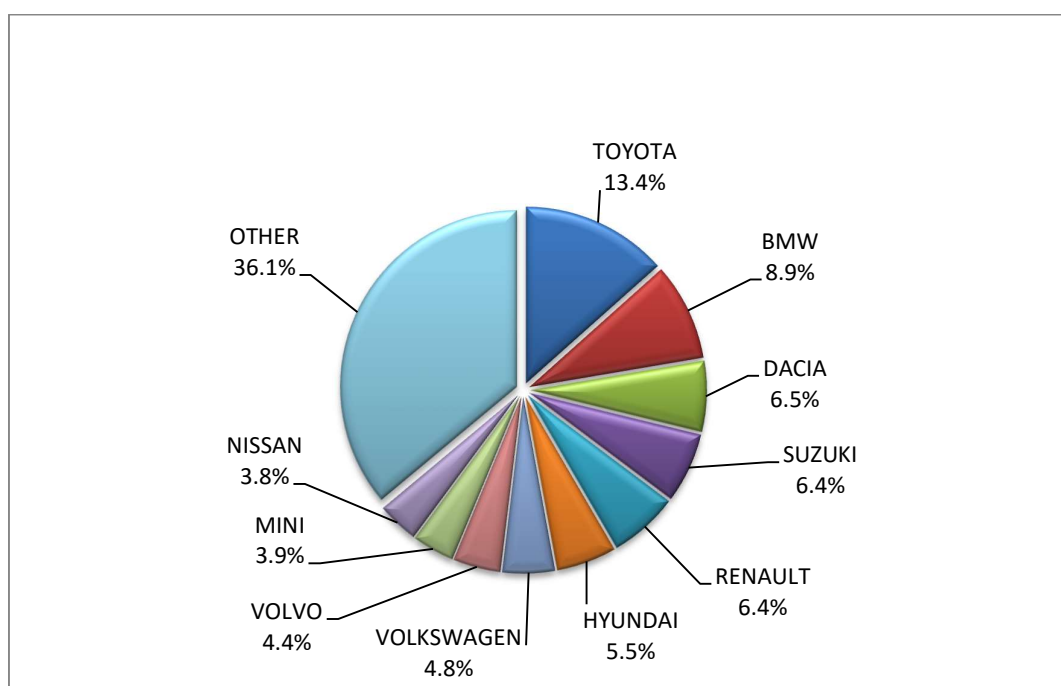
Table 4 (cont)
Sales of new and used passenger cars by make: December 2024 and January - December 2024

Make	Passenger cars			
	December		January - December	
	new	used	new	used
SEA, ELNAGH, SUNROLLER	-	-	-	1
SEAT	30	42	1,309	653
SERES, DFSK, SOKON, AITO	-	-	24	-
SKODA	108	182	3,914	2,169
SMART	16	78	69	1,368
SSANGYONG	-	-	-	6
SUBARU	3	5	43	72
SUZUKI	560	78	10,631	1,526
TEC CARAVAN	-	-	-	1
TESLA	185	8	1,987	78
TOYOTA	1,167	350	23,548	6,308
TRIGANO	-	-	-	7
VOLKSWAGEN	416	163	6,104	3,243
VOLKSWAGEN ¹	-	-	1	-
VOLVO	379	25	2,235	326
VOYAH	1	-	2	-
WESTFALIA	-	-	4	-
WILLYS	-	-	-	1
YODO, YUN	-	-	19	-
Z.MANTOS	-	-	1	-
ZHIDOU, ZD, ELARIS	-	-	2	-
TOTAL	8,699	4,474	136,984	77,785

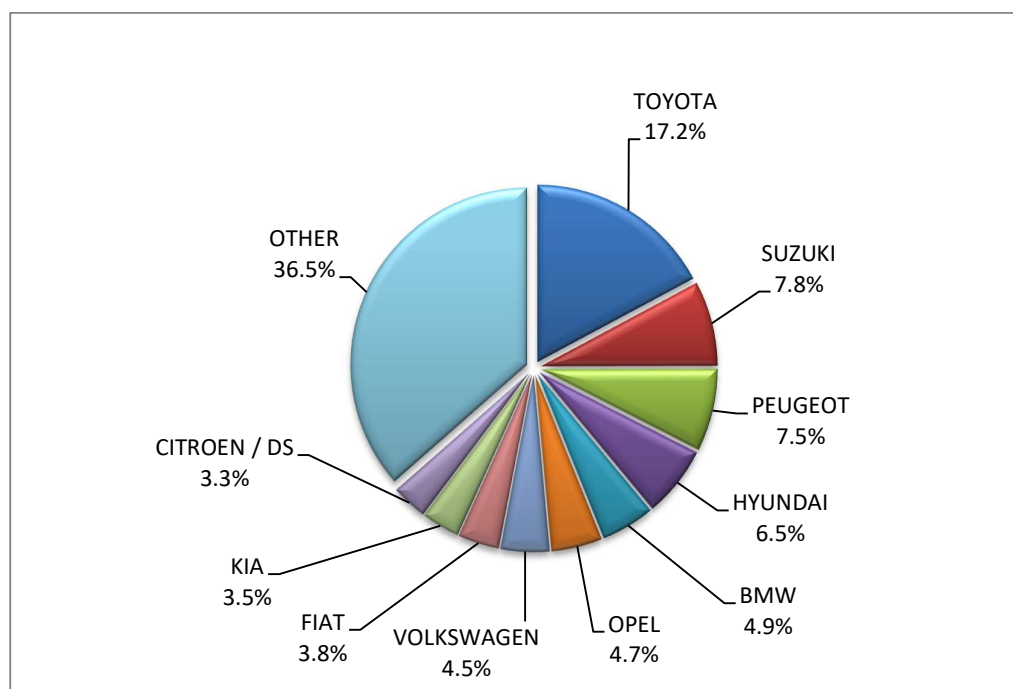
1 : With 2nd/3rd stage manufacturer in Greece.

2 : With 2nd/3rd stage manufacturer abroad.

Graph 8. Sales of new passenger cars by make (December 2024)



Graph 9. Sales of new passenger cars by make (January – December 2024)



**Table 5
Sales of new and used lorries by make: December 2024 and January - December 2024**

Make	Lorries			
	December		January - December	
	new	used	new	used
ADDAX MOTORS ¹	1	-	1	-
ADDAX MOTORS, ISEKI, STAMA	-	-	6	3
ASTRA	-	-	-	1
BMC Otomotiv Sanayi ve Ticaret A.Ş. ¹	-	-	1	-
BMW	-	-	-	1
BYD	1	-	28	-
CENNTRO	-	-	3	-
CHEVROLET	-	1	-	4
CHRYSLER	-	-	-	3
CIFA	-	-	2	-
CITROEN	3	27	703	495
DACIA	-	3	2	87
DACIA ¹	-	-	6	-
DAF	-	12	6	332
DAF ¹	-	-	18	-
DAIHATSU	-	-	-	6
DENNIS EAGLE	-	-	-	2
DODGE	-	1	-	10
ESAGONO ENERGIA	-	-	1	-
ESAGONO ENERGIA S.R.L. ²	-	-	1	-
FARIZON AUTO	-	-	2	-

Table 5 (cont)
Sales of new and used lorries by make: December 2024 and January - December 2024

Make	Lorries			
	December		January - December	
	new	used	new	used
FCA US LLC	-	-	-	5
FEIDI	-	-	3	-
FIAT	39	51	711	1,185
FIAT DUCATO ¹	-	-	2	-
FIAT-IVECO	-	-	-	11
FORD	253	221	2,214	3,159
FORD ¹	-	-	29	-
FUSO	1	1	4	6
GARIA APS ¹	1	-	1	-
GARIA, CLUB CAR, MELEX	-	-	2	-
GOUPIL, MEGA, POLARIS, GEM	2	-	10	1
HYUNDAI	-	3	-	30
ISUZU	52	14	538	227
ISUZU ¹	1	-	2	-
IVECO	2	22	26	382
IVECO ¹	8	-	50	-
IVECO MAGIRUS	-	-	-	3
IVECO MAGIRUS ¹	-	-	1	-
JAC	-	-	1	-
JEEP	-	2	19	14
KERSTNER	-	-	-	1
KIA	-	-	-	4
LAND ROVER	-	2	-	18
LEVC	-	-	2	-
MAGIRUS	-	-	-	1
MAN	-	31	4	943
MAN ¹	2	-	38	1
MAN ²	-	-	3	-
MAXUS	-	-	1	-
MAXUS ²	-	-	1	-
MAXUS, LDV	6	1	96	5
MAZDA	-	-	-	4
MERCEDES	13	229	238	4,161
MERCEDES ¹	11	-	123	13
MERCEDES ²	-	-	5	1
MINI	-	-	-	1
MITSUBISHI	-	20	6	360
MITSUBISHI ¹	4	-	54	2
MITSUBISHI ²	-	-	4	5
MITSUBISHI FUSO	-	4	4	21
MITSUBISHI FUSO ¹	-	-	5	-
NISSAN	10	51	87	598

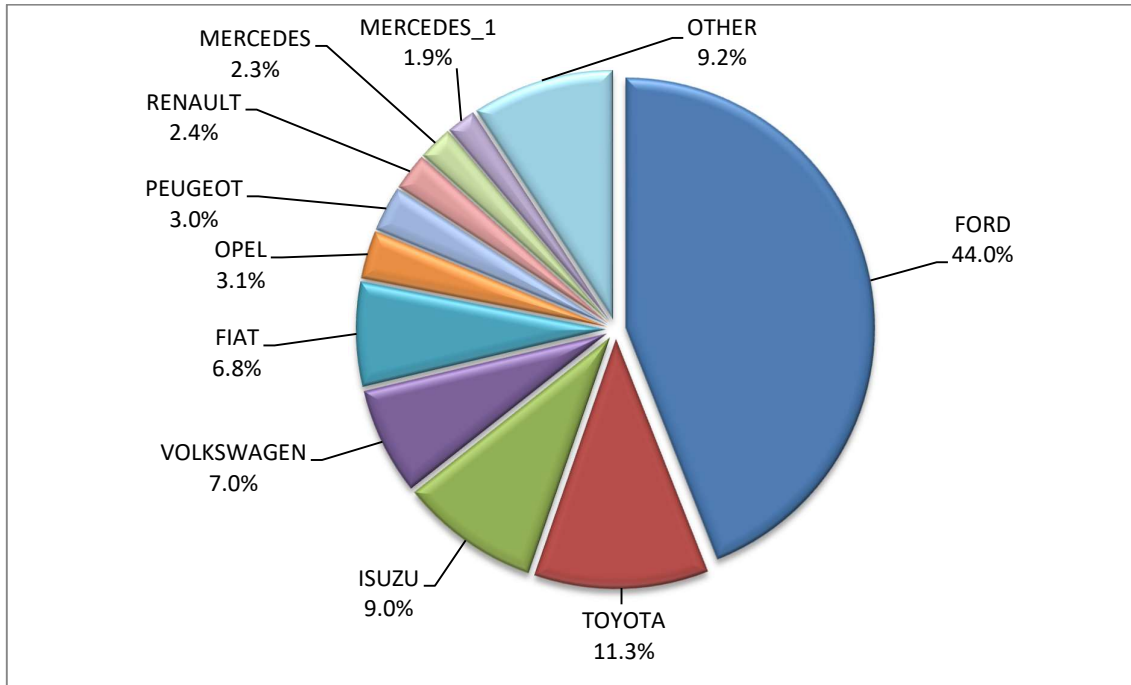
Table 5 (cont)
Sales of new and used lorries by make: December 2024 and January - December 2024

Make	Lorries			
	December		January - December	
	new	used	new	used
NISSAN ¹	-	-	7	-
NISSAN ²	-	-	-	2
OAF	-	-	-	1
OPEL	18	30	1,161	606
PEUGEOT	17	30	640	580
PEUGEOT ¹	-	-	1	-
PFAU	-	-	-	6
PIAGGIO	1	-	17	38
PIAGGIO ¹	-	-	5	-
PIAGGIO ²	-	-	7	2
PUTZMEISTER CONCRETE PUMPS GMBH	-	-	2	-
RELIANT	-	-	-	1
RENAULT	14	64	332	1,181
SAXAS	-	-	-	1
SCANIA	-	19	41	452
SCANIA ¹	-	-	8	-
SEAT	-	-	-	5
SKODA	-	-	1	17
SOMMER GMBH	-	-	-	1
SPIER	-	-	-	4
SSANGYONG	-	-	-	3
STEYER	-	-	-	3
STEYR	-	-	-	1
SUZUKI	1	-	131	2
TATA	-	-	-	1
TERBERG	-	-	-	1
TOYOTA	65	30	2,074	466
TOYOTA ¹	-	-	1	1
VICTORY	5	-	15	-
VOLKSWAGEN	40	30	715	652
VOLVO	1	24	126	753
VOLVO ¹	3	-	85	5
TOTAL	575	923	10,433	16,891

1 : With 2nd/3rd stage manufacturer in Greece.

2 : With 2nd/3rd stage manufacturer abroad.

Graph 10. Sales of new lorries by make (December 2024)



Graph 11. Sales of new lorries by make (January – December 2024)

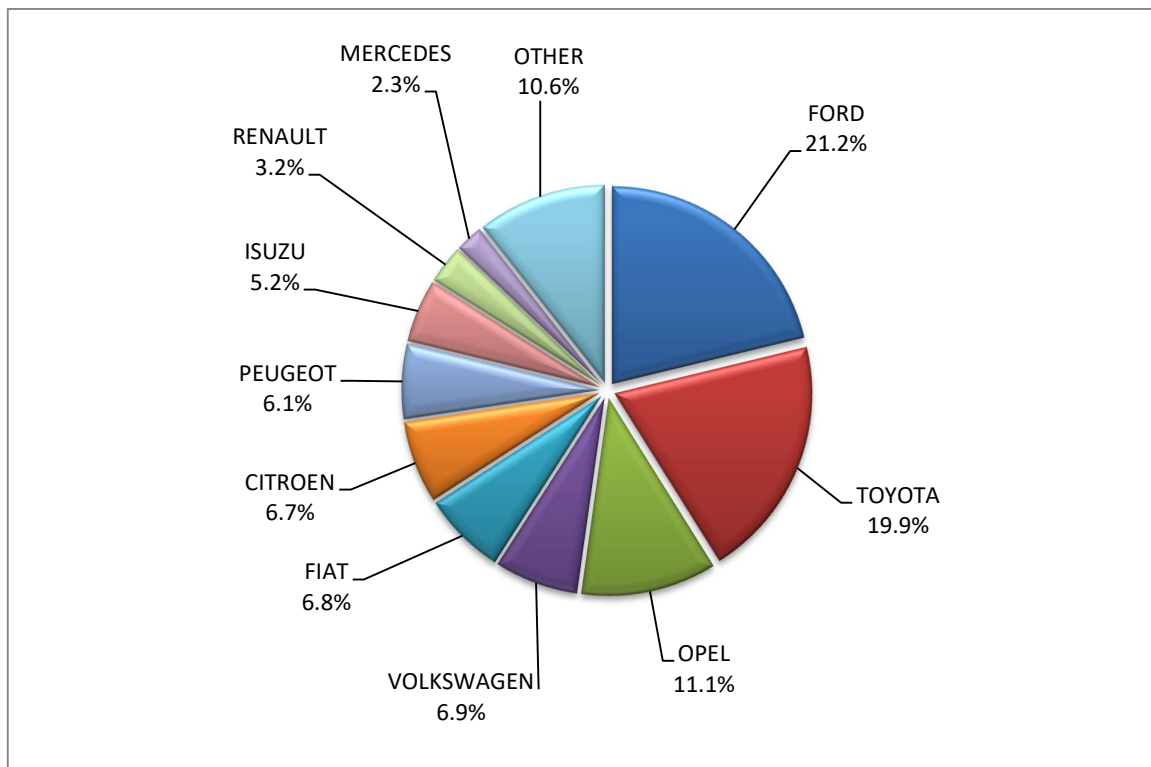


Table 6
Sales of new and used buses by make: December 2024 and January - December 2024

Make	Buses			
	December		January - December	
	new	used	new	used
BEULAS	-	-	-	1
BMC	-	-	-	1
BMW ²	-	-	1	-
BOVA	-	9	-	40
BYD	-	-	8	-
DAF	-	-	-	1
ERDUMAN	-	-	8	-
FIAT	-	1	-	1
FIAT- IVECO	-	-	-	2
FORD	1	-	17	32
FORD ¹	-	-	1	-
IRISBUS	-	-	-	2
ISUZU	-	-	-	4
ISUZU, ANADOLU ISUZU, AIOS, AOS, TURKUAZ, TURQUOISE, GLOBUS	-	-	8	-
ISUZU, AOS, GLOBUS, AIOS	-	-	9	-
IVECO	-	3	2	7
IVECO ¹	-	-	3	-
IVEKO ²	-	-	1	-
KARSAN	-	-	6	-
KASSBOHRER	-	-	-	1
KING LONG, RHODIUM	-	-	2	-
MAN	19	5	199	42
MAN/NEOPLAN	4	-	4	5
MERCEDES	1	64	30	556
MERCEDES ¹	5	-	221	-
MERCEDES ²	1	-	13	5
NEOPLAN	-	3	15	18
OTOKAR	-	1	2	7
RENAULT	-	-	-	4
SCANIA	-	-	-	4
SCANIA ²	1	-	3	-
SETRA	-	9	11	60
TAM-EUROPE D.O.O	-	-	5	-
TEMSA	8	8	40	35
VAN HOOL	-	-	-	3
VOLKSWAGEN	-	-	-	2
VOLVO	-	1	-	6
XIAMEN KING LONG	-	-	-	5
YUTONG	-	-	250	-
TOTAL	40	104	859	844

1 : With 2nd/3rd stage manufacturer in Greece.

2 : With 2nd/3rd stage manufacturer abroad.

Graph 12. Sales of new buses by make (January – December 2024)

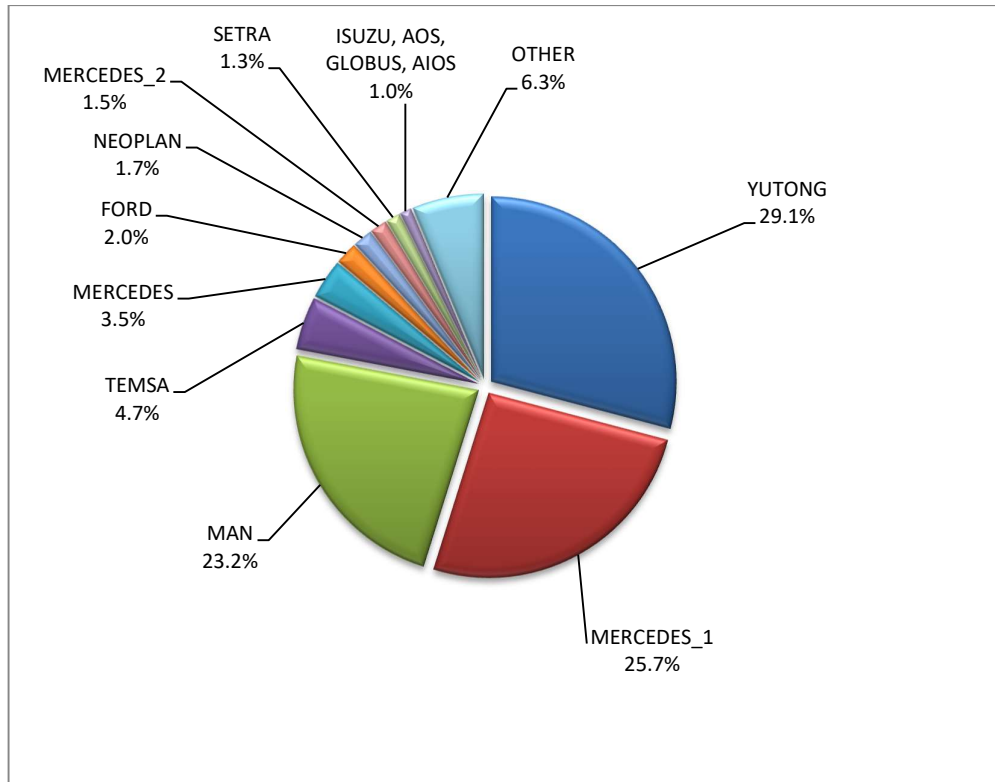


Table 7

Sales of new and used motorcycles by make or manufacturer: December 2024 and January - December 2024

Make	Motorcycles			
	December		January - December	
	new	used	new	used
AEON MOTOR	-	-	1	1
AJP	-	-	1	-
ALBA	-	-	1	-
APRILIA	51	-	575	46
ARCTIC CAT, MASSEY FERGUSON, VADA	-	-	-	1
ARENA, ELYX, MIFUN, VMOTO	-	-	16	-
ARIIC, JINLANG	-	-	42	-
ARMONY, ARORA, BUKE, BULL MOTORS	-	-	44	-
ASUS, YUKI, RATO, DOCKER, MIGLIORI, VICTORY, AVETA	44	-	377	-
BAJAJ	-	-	48	1
BASHAN, AMGroup, AMGroup Bike, DON, IRBIS, WORKER BEAR, Nomik ATV 2	1	-	32	1
BAW, NIEVE, RELIVE, ALLVIEW, Yunlong Motors	1	-	25	-
BELGARDA SPA	-	-	-	1
BENDA, KEEWAY, BDMOTO	1	-	5	-
BENELLI	94	-	978	7
BENZHO	-	-	-	2
BETA	5	-	112	8
BLUESHARK	5	-	15	-
BMW	51	16	1,062	417

Table 7 (cont)

Sales of new and used motorcycles by make or manufacturer: December 2024 and January - December 2024

Make	Motorcycles			
	December		January - December	
	new	used	new	used
BOMBARDIER RECREATIONAL PRODUCTS ING (BRP)	-	-	8	4
BRIXTON	6	-	85	2
BUELL	-	-	-	1
BUGGYCAR, HOLLYBEACH, ITALCAR	-	-	15	-
CAKE	-	-	-	1
CENNTRO	-	-	1	-
CF MOTO, CSR, QUAZILLA	-	-	-	1
CFMOTO	122	-	2,825	5
CFMOTO, KEEWAY	6	-	117	-
CFMOTO, WHITE KNUCKLE, MONDIAL, JUNAK	-	-	-	1
CFMOTO, ZEEHO	2	-	46	-
CHONGQING	-	-	-	1
DAELIM	-	-	-	3
DAYANG, DAYTONA MOTORS, NIPPONIA, DOCKER, WAYEL, SUMCO, VEEROAD, CETUR, RUTEC, ZENKO	-	-	16	-
DAYANG, DAYTONA MOTORS, NIPPONIA, DYMOTO, DOCKER, VEEROAD, EVO MOTORS, SUMCO, CETUR, HANSOM	-	-	4	-
DAYANG, DAYTONA MOTORS, NIPPONIA, DYMOTO, VEEROAD, EVO MOTORS, MH MOTORCYCLES, FKM, FKMOTORS, KUBA	1	-	182	-
DAYANG, DAYTONA MOTORS, NIPPONIA, KUBA, VEEROAD, SUMCO, CETUR, RUTEC	104	-	2,810	-
DAYANG, DAYTONA MOTORS, NIPPONIA, VEEROAD, DOCKER	13	-	753	-
DAYANG, DYMOTO, DAYTONA MOTORS, NIPPONIA, MH MOTORCYCLES, ORCAL, SUMCO, KUBA, RKS, RUTEC, AJS	3	-	119	-
DAYANG, ECOCREMO, ECOOTER, ECOOTOR,AGM, ORCAL, SUMCO	-	-	15	-
DAYANG, NIPPONIA, DAYTONA MOTORS, VEEROAD, SUMCO, DOCKER, MH MOTORCYCLES	1	-	24	-
DAYTONA	-	-	28	-
DAYTONA MOTORS, DAYANG, DYMOTO, NIPPONIA, MH MOTORCYCLES, ORCAL, SUMCO, RUTEC, AJS	2	-	44	-
DAYTONA MOTORS, DAYANG, NIPPONIA, DYMOTO, DOCKER, VEEROAD, EVO MOTORS, SUMCO, CETUR, HANSOM, RUTEC	2	-	60	-
DAYTONA MOTORS, EVO MOTORS, LONGJIA, ORCAL, NECO, VGA, ROMET MOTORS, DRAX, MONDIAL, JUNAK, ONLINE	6	-	35	-
DAYTONA MOTORS, YINGANG, KUBA, RKS, SKYJET, MAGPOWER, MITT, VENTUR, ARCHIVE MOTORCYCLE	-	-	14	-
Daytona Motors, ZONTES, TAYO, KIDEN, Haojiang, ZHONGYU, Sharpon, TANNY, TYAN, Senke, B BETA	-	-	41	-
DERBI	-	-	-	3
DIVINE STAR&MOON, GSMOON	-	-	-	1
DMEMOTO, Elyx Smart, OPAI, DME	-	-	2	-
Dofern, Frison scooter, skootec, passion, Elektra EV, CJR	-	-	1	-
DONGBEN, GANCIN, DIRONG, KRAL	1	-	16	-
DOOHAN	-	-	1	-
DUCATI	9	1	223	87
E.F.O, GOLDEN LION, SAKURA, ARTISAN, Fauro,ETALIAN, BOLIDE, LINZE, DREEMS e-mobilities, BAïKU, AJS	-	-	5	-
E.F.O., GOLDEN LION, SAKURA, ARTISAN, Fauro, ETALIAN, Viverra, Varaneo, Kito, E-mio, velca, E-KUMA, BOLIDE	-	-	3	-
EAGLE	-	-	-	1
EASYCOOL, MITT, blu:s, Luxxon, ROMET	-	-	2	-
ECOOTER, ETRIX, AGM, DRAX, ORCAL, SUMCO	-	-	13	-

Table 7 (cont)

Sales of new and used motorcycles by make or manufacturer: December 2024 and January - December 2024

Make	Motorcycles			
	December		January - December	
	new	used	new	used
EFUN, ZAP, FRISON, easy-watts	4	-	87	-
ELECTRIC MOTION SAS	-	-	4	-
EMBUGGY, EVANGEL, The Original BeachBuggy, Beach Buggy	2	-	64	-
ENERGICA	-	-	-	1
E-TUK FACTORY	-	-	3	-
FANGPOWER, Kontio Motors	1	-	15	-
FANTIC MOTOR	-	-	32	-
FD MOTORS, FASPIDER, Daytona Motors, EVO Motors, Veeroad	-	-	10	-
FD MOTORS, FASPIDER, DAYTONA MOTORS, NIPPONIA, QUANTYA	-	-	17	-
FENGCHENG, FULLCHEER, Barman-pakro, NITSURO, VOLDORK, SPIMRI, Elektra EV, EK0e, BITMART	-	-	1	-
FOSTI	-	-	-	1
GASGAS	3	-	23	4
GENERIC, QJ, QJIANG, EXPLORER, RIDE	-	-	-	1
GENERIC,EXPLORER,MALANCA,KSR Moto Austria, Motron Motorrad	1	-	18	-
GILERA	-	-	-	1
GOCCIA, E-ZI, AGM, SFM, VGA, SACHS, SAXXX, KEEWAY, Vengo, Viarelli, EZI, E ZI	3	-	10	-
GOLDEN LION, ARTISAN, Fauro,ETALIAN, Viverra, Varaneo, Kito, E-mio, Velca, E.F.O., E-KUMA, BOLIDE	9	-	18	-
GOLDEN LION, SAKURA, ARTISAN, ETALIAN, E-mio, Fauro, Kito, Varaneo, Virerra, E.F.O., BOLIDE, E-KUMA, velca	-	-	13	-
GOUPIL	-	-	1	-
GPX	6	-	113	-
GUSITE, RKS, KUBA, KOKO, KAVIR, BECANE, EVO MOTORS, Daytona MOTORS, SUMCO, SKYJET	-	-	194	-
Haojiang, ZONTES, TAYO, Sharpon, IFINO, KIDEN, ZHONGYU, CUBTOM, DIYUN, NAMIN, TIM DERVI, VUKA, THUMP, R-ipper	2	-	82	-
HAOJIN, KUBA, RKS, SKYJET, LETBE	-	-	1	-
HAOJIN, LETBE, KUBA, RKS, SKYJET	12	-	77	-
HARLEY DAVIDSON	2	3	17	175
HONDA	619	25	13,365	632
HOOOON, PICKMAN	-	-	1	-
HORWIN	-	-	13	-
HPUHASLER MUENCHEN	-	-	-	1
HSUN	-	-	-	1
HSUN, CROWN, YAMOTO, TOMOTO, DORTO	-	-	-	1
HSUN, HISUN, APACHI, Mx, MASAI, HYTRACK, TRAPPER, PUMAREX, ASYAMOTOR, DAYTONA MOTORS, GEON, KRAL	-	-	1	-
HUSQVARNA	5	2	112	62
HYOSUNG	2	-	3	3
IIFSTEV, IIFSTMUTO	-	-	7	-
INDIAN MOTORCYCLE	2	-	22	4
ITALJET	-	-	10	1
JCADI, TILGREEN, Grupo Invicta MOTOR, e-broh, FAURO	-	-	2	-
JIAJUE, Joyrace, MAXON, Gineva Moto, TURBHO	4	-	4	-
JIAYUAN	6	-	86	-
JINMA, RUNHORSE, FARAD, hopster, DuroCar	-	-	1	-
JNEN, JUNENG, ZIPP, MOTORAN, HORS, FLEX TECH, RAZZO, TOROS, ONE, JUNAK	4	-	108	-

Table 7 (cont)

Sales of new and used motorcycles by make or manufacturer: December 2024 and January - December 2024

Make	Motorcycles			
	December		January - December	
	new	used	new	used
JNEN, JUNENG, ZIPP, MOTORAN, ONE, FLEX TECH, RAZZO, TOROS, JUNAK, TURBHO, PEZAL, ALPHA-MOBIL	9	-	287	-
JONWAY, CKA EUROCKA, IONA, HUIBANG, DAYTONA MOTORS, GECO	-	-	1	-
JONWAY, DAYTONA MOTORS, EVO MOTORS	-	-	2	-
JONWAY, SHENKE, HUIBANG, JMSTAR	-	-	4	-
KAMAX	-	-	3	-
KAWASAKI	11	-	234	99
KAYO, MONDIAL, DAYTONA MOTORS	1	-	50	-
KEEWAY	1	-	33	1
KEEWAY, JINLANG, ARIIC, ARORA, KL	12	-	34	-
KEEWAY, KUBA	2	-	57	-
KEEWAY, LONGJIA	18	-	184	-
KSR MOTO AUSTRIA, MOTRON MOTORRAD	1	-	28	-
KTM	21	7	522	269
KUBA, MH MOTORCYCLES, MGB, SHINERAY, Daytona Motors, MASH	2	-	36	-
KUBA, RKS, SKYJET, LETBE	1	-	3	-
KWANG YANG	-	-	-	1
KYMCO	77	8	3,017	391
LAMBRETTA	-	-	1	-
LEIMO, ZF-KY, HUAWIN, ARORA, MOJITO	1	-	5	-
LETBE, RKS	2	-	4	-
LEXMOTO	-	-	-	1
Lexmoto, ROMET, NECO, Luxxon, PRIKE	6	-	15	-
LIFAN, HONLEI, QIPAI, SKYGO, GTS, PINK, Daytona MOTORS	-	-	3	-
LIFAN, QIPAI, SKYGO, TAKTAS, TAKTAS MOTOR	13	-	85	1
LIGIER	-	-	-	1
Lingzhida, LINZDA, LINDN, LINYI, LONGMAO, NLIGHT	-	-	12	-
LINHAI, LHY, KUBA, ONLINE	2	-	22	-
LOJO, RAINWOLL	-	-	16	-
LOJO, SUNPULSE, YGM, RAINWOLL	1	-	7	-
LONCIN, KINLON, LONGTING, KUBA, YUKI, MONDIAL, STMAX, KANUNI, MOTORAN, ASYA, QUSWA, PUMAREX, RALLY USA, MOD, CCM	2	-	130	-
LONCIN, KUBA, RKS, ITALIKA, SUNRACE, SKY, MALAGUTI, SUPERBIKE, ROCKET, NOVELBAT, TIGREMOTO, GREEN, TRIDIAMOND	-	-	4	-
LONCIN, KUBA, RKS, ITALIKA, VOGÉ, SUNRACE, SKY, MALAGUTI, ROCKET, SUPERBIKE, NOVELBAT, TRIDIAMOND	11	-	343	1
LONCIN, VOGÉ	2	-	94	1
LONCIN, VOGÉ, KUBA, RKS, ITALIKA, SUNRACE, SKY, MALAGUTI, SUPERBIKE, ROCKET, NOVELBAT, TIGREMOTO, GREEN	-	-	10	1
LONCIN, VOGÉ, VOGÉPRO	3	-	942	-
LONCIN, KUBA, RKS, ITALIKA, SUNRACE, SKY, MALAGUTI, SUPERBIKE, ROCKET, NOVELBAT, TIGREMOTO, GREEN	-	-	5	1
LONGJIA, ITALJET, ORCAL, BEELINE, ROMET MOTORS, GEMINI, LEXMOTO, JAHANRO, VGA, DAYTONA MOTORS	-	-	1	-
LONGJIA, ORCAL, NECO, ALFASCOOTERS, VGA, ROMET MOTORS, BARTON MOTORS, OVER, CAROLYN, KANUNI, BTC	2	-	306	3
LONGJIA, ORCAL, NECO, ALFASCOOTERS, VGA, ROMET MOTORS, RYMCO, ASUS, OVER, CAROLYN, KANUNI, BTC, TURBHO, ITALMOTO	-	-	-	1
LONGJIA, ORCAL, NECO, VGA, ROMET MOTORS, DRAX, MONDIAL, JUNAK, ONLINE, MOTOWELL, JORDON, GABELLI	1	-	4	-
LONGJIA, ORCAL, NECO, VGA, ROMET MOTORS, ROUTER, lexmoto, Gemini, MH, motorcycles	1	-	3	-

Table 7 (cont)

Sales of new and used motorcycles by make or manufacturer: December 2024 and January - December 2024

Make	Motorcycles			
	December		January - December	
	new	used	new	used
LONGJIA, ORCAL,NECO,VGA, ROMET MOTORS	5	-	245	-
LONGJIA, VICTORIA, VICTORIA MOTORRAD, ORCAL, NECO, VGA, BTC, ALFASCOOTERS. ROMET MOTORS	4	-	535	-
LONGJIA, Zündapp, VGA, NECO, BTC, AGM, ALFASCOOTERS, ROMET MOTORS, Kudaki, BARTON MOTORS, OVER BIKES	4	-	214	-
LUQI, TWISTER WHEEL, SPYDER WHEELZ, DJJD, GTS, TEKUON, Eway, Emoto, Bikers, i-coco	-	-	1	-
LVNENG	-	-	19	-
LONGJIA, ZUNDAPP, VGA, NECO, BTC, ALFASCOOTERS, ROMET MOTORS	1	-	13	-
MACBOR, RVM, COLOVE, DAYTONA MOTORS, ZF-KY, online, KOVE	13	-	236	-
MACBOR, RVM, COLOVE, ORCAL, DAYTONA MOTORS, ZF-KY, Lexmoto, OVER BIKES, YUKI, AJS	-	-	22	-
MALAGUTI	23	-	453	6
MBK	-	1	-	9
MBP, Morbidelli, KEEWAY, KUBA, RKS	2	-	20	-
MELEX	-	-	8	-
MGK HM	158	-	2,115	1
MICRO	1	-	41	-
MILG	-	-	9	-
MODENAS	-	1	1	6
MONDIAL, PELPI INTERNATIONAL	-	-	1	-
MONDIAL, UGUR, YIBEN, DERRACE, ISILDAR, TGB, APACHI, ISILDAR APACHI	3	-	4	-
MONTESA	-	-	5	1
MORBIDELLI, MBP, KEEWAY, KUBA, RKS	13	-	61	-
MOTO GUZZI	15	-	132	8
MOTO MORINI	2	-	21	-
MOTRON MOTORRAD, ZONGSHEN	-	-	13	-
MV AGUSTA	-	-	2	4
NACIONAL MOTOR SAU	-	-	-	1
NERVA	-	-	5	-
NEWBOT	1	-	3	-
NIU, NUUV	-	-	18	-
NORTON	-	-	-	1
ODES	1	-	68	-
OPAI	1	-	8	-
ORCAL, SOMOTO, AJS, SENKE, HERALD, ITALJET, WACCO, MOTOBİ, CLEVELAND CYCLEWERKS ACE, MERCURY, SAXXX, SFM	-	-	3	1
PAOLETTI RACING	-	-	-	1
PEUGEOT	15	-	333	17
PIAGGIO	412	14	10,085	369
PILOT CAR	-	-	14	-
PK IRBIT MOTORC	-	-	-	1
POLARIS	1	-	80	6
PONY, BAW 1, BAW 2, BAW 3, N1, N2, Allview	-	-	10	-
POWERLAND	-	-	10	-
QINGQI, CLEVELAND, CYCLEWERKS ACE, CLEVELAND ACE, CLEVELAND CYCLEWERKS ACE DELUXE	1	-	1	2
QJ, QJIANG, KEEWAY, LEONE, KUBA, RKS, BENELLI, VENGO	-	-	1	2
QJ, QJIANG, KEEWAY, LEONE, RKS, BENELLI, EMPIRE KEEWAY, KUBA	1	-	3	-
QJ, QJIANG, QJMOTOR, B MOTOBİ, QJTEC	33	-	1,033	-

Table 7 (cont)

Sales of new and used motorcycles by make or manufacturer: December 2024 and January - December 2024

Make	Motorcycles			
	December		January - December	
	new	used	new	used
QJ, QJIANG, QJMOTOR, B MOTOB, QJTEC, LIFAN, GTS, DAYTONA MOTORS, SIMONINI MOTO, PINK, RKS	70	-	241	1
RAP, SCOOBIC	-	-	1	-
RAY ELECTRIC MOTORS	-	-	3	-
REDMOTO	-	-	4	-
REGIS	-	-	-	1
RENAULT	-	-	-	3
RENLI	6	-	110	-
RIEJU, DRAC	-	-	6	1
RIVERO	-	-	-	1
RIYA, RYMOTO, KUBA, RKS, LEXMOTO, MITT, ALPHA MOTORS, IMF, ROMET, ZIPP, ARORA, ZORRO, MOJITO	5	-	77	-
ROYAL ENFIELD	23	-	456	2
Royalloy, Royal Alloy, RA, SCOMADI, VALENTINO, VALENTINO MOTORI	-	-	11	1
SACHS	-	-	-	1
SAKURA, GOLDEN LION, ARTISAN, Fauro, ETALIAN, Viverra, Varaneo, Kito, E-mio, velca, E.F.O, E-KUMA, BOLIDE, LINZE	1	-	47	-
SCUTUM, ETRIX, SILENCE	-	-	16	-
SEGWAY	3	-	201	-
SHANGBO	1	-	4	-
SHANYANG, ATLAS PANTHER, YAMAZUKI MOTO, MOTORKING, Hirlee, XB	-	-	7	1
SHERCO	4	5	21	17
SHINERAY, MASH, SCRAMBLER, MONDIAL, DERRACE	-	-	-	2
SHINERAY, SWM	-	-	6	-
SILENCE, SCUTUM, ETRIX	2	-	79	-
SKYTEAM, SACIN, CSR, METALCO, SOKUDO, BAZUKA, MINICO, MOTOSBASI, MOTOS BORDOY, SUMKO, ROXON, MONKEY BIKES	1	-	28	1
SURRON	-	-	7	-
SUZUKI	38	2	647	196
SYM	382	1	15,677	139
TAIWAN GOLDEN B	-	-	-	1
TARO, JUNAK, BARTON MOTORS ,ORCAL, Lexmoto	-	-	167	-
TARO, JUNAK, BARTON MOTORS, ORCAL, Lexmoto, MITT, NECO, WOTTAN, MAGPOWER, ADAMOTO, MAXON, MAX-ON, TRMOTOR, CHUANL	-	-	108	-
TARO, TRMOTOR, CHUANL, JUNAK, BARTON MOTORS, ORCAL, Lexmoto, MITT, NECO, WOTTAN, MAGPOWER, ADAMOTO MOTORCYCLES	-	-	7	-
TARO, TRMOTOR, CHUANL, JUNAK, Lexmoto, BARTON MOTORS, MITT, NECO, MAXON, WOTTAN MOTOR, MAX-ON, MOTOB, MOTO B	21	-	305	-
TAURIS	-	-	-	1
TAYO, HAOJIANG, ZHONGYU, THUMP, THUMPSTAR, KIDEN, ZONTES, Junak, SENKE	5	-	129	2
TAYO, HAOJIANG, ZHONGYU, THUMP, THUMPSTAR, KIDEN, ZONTES, Junak, SENKE, TANNY, TYAN, ROMET, ROMET MOTORS, ROUTER	2	-	59	-
TAYO, ZONTES, KIDEN, Haojiang, ZHONGYU, Sharpon, TANNY, TYAN, Senke, B BETA, Daytona Motors	22	-	884	1
TAZZARI	-	-	1	-
TEYIN, TIANYING, XINBEN, SANBEN, ALFASCOOTERS, Alpha Motors, APACHI	1	-	68	-
TGB	-	-	11	1
TIANYING, RIYA, HONGYUNDA, TYM, HONLING, SANBEN, XINBEN, TAMCO, ALISON, DMK MOTORS	1	-	5	-

Table 7 (cont)

Sales of new and used motorcycles by make or manufacturer: December 2024 and January - December 2024

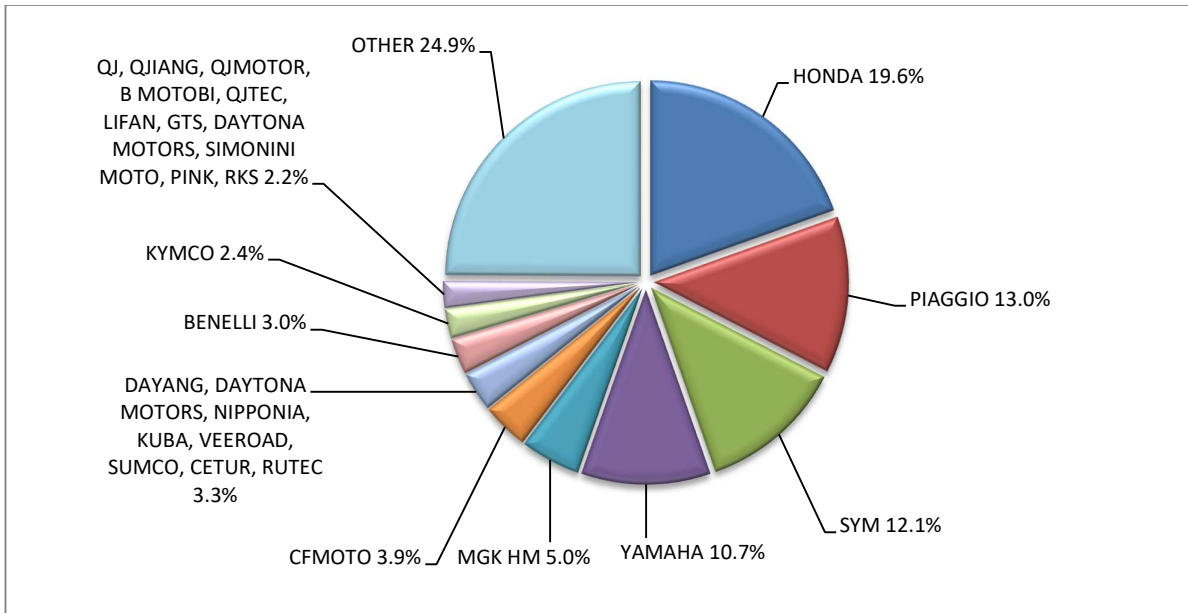
Make	Motorcycles			
	December		January - December	
	new	used	new	used
TIANYING, RIYA, HONGYUNDA, TYM, HONLING, TAMCO, ALISON, DMK MOTORS, WLIE, LEEWAY, WLXQ, AP Gmoto, ALFA	-	-	11	-
TIANYING, RIYA, HONGYUNDA, TYM, SANBEN, XINBEN, TAMCO, ALISON, DMK MOTORS, WLIE, LEEWAY, WLXQ	2	-	48	-
TIANYING, RIYA, SANBEN, TEYIN, TYM, Alfascoters, JORDON, YUKI, YAMASAKI, IVA, SENZO, KillerBee	1	-	21	-
TIANYING, RIYA, SANBEN, TEYIN, TYM, BERMOTO, Capirelli, Gemini, KENTOYA, LGW MOTO, Masaru, Romet, VENTO	1	-	3	-
TINBOT, KOLLTER, MASAI, INTO, VIARELLI, EDRIVE, DuroCar, MGK HM, Fauro, BRINCO	-	-	4	-
TINBOT, KOLLTER, MASAI, MS ENERGY	-	-	2	-
TISTO, ETRIKOSKG	-	-	2	-
TM RACING	2	-	5	-
TRIUMPH	26	-	536	25
TRIUNI, TRIGOBIKE, LUCKING-MOPED, CSE-EV, JSE-MOTO, RETELLI, BIKEMITE, MOBI-E, U-MOB, VELCAMOTOR, DUKKA, LUYING	-	-	7	-
TROMOX	1	-	1	-
UGBEST, Ecobit, ECOKARGO	2	-	2	-
UM	7	-	225	-
URAL MOTO	-	-	-	1
VELIMOTOR, VOLTAMP, ALTUX, KKL HITECH, WHEELN WATER TECH, ALTUS, NUVEAU MONDE, EN MOTO, YOUNBEE MOTORS, KKL	1	-	15	-
VELOCIFERO, CECOTEC	-	-	1	-
Victory Motorcycles Division, Polaris Industries Inc.	-	-	-	1
VMOTO	2	-	9	-
VMOTO, E-MAX, FMC, CSR, ROADSIGN, KENTOYA, JINYING, GOES, VETRIX, DAO, VENGO, TELL	-	1	-	1
VMOTO-SOCO, E-MAX, VMOTO, SUPER SOCO	4	-	49	-
VOGE, LONCIN, VOGEPRO	20	-	1,801	-
VOLTA, CHAOYA, EASY-WATTS, LUIGI, VELCA, Pineapple Bikes	-	-	2	-
VOLTA, VTA, REVOLT	-	-	8	-
VONROAD WJM 150	-	-	-	1
WANGYE, SANBEN, UM, KENOS, SUPERBYKE, MDC, MISTRAL	2	-	76	-
WONJAN, THRUST MOTOR, WMOTO, KEEWAY, TD	16	-	277	-
WUZHENG	-	-	3	-
XEV, X, XEV YOYO	9	-	131	1
XIAMEN XIASHING	-	-	-	1
XINRI, SUNRA, APACHI, ISILDAR, ISILDAR APACHI, Wayscral, KRAL	-	-	38	-
YADEA	-	-	9	-
YAMAHA	340	24	7,262	819
YINXIANG, KENBO	-	-	-	1
YINXIANG, MONDIAL, GEMINI, TCB	2	-	2	-
YOUYAKU, YOUYAKU ELECTRIC SCOOTER	-	-	3	-
ZERO MOTORCYCLES	-	-	6	-
ZHIDOU, ZD, RKS	1	-	22	-
ZHONGNENG, ASYA, DADO, ZNEN, BARON	-	-	-	1
ZHONGNENG, ZNEN, AGM, AJS, YUKI, COLIBRI, EUROCKA, BTC, NOVA MOTORS, LEXMOTO	-	-	5	-
ZHONGNENG, ZNEN, AGM, BTC, CLS, COLIBRI, DAYTONA MOTORS, DERRACE, DOCKER, JM MOTORS, KUBA, La souris, LEXMOTO	4	-	228	-
ZHONGNENG, ZNEN, AGM, YUKI, COLIBRI, LEXMOTO, Minimoto, NECO, ROMET MOTORS	2	-	19	-

Table 7 (cont)

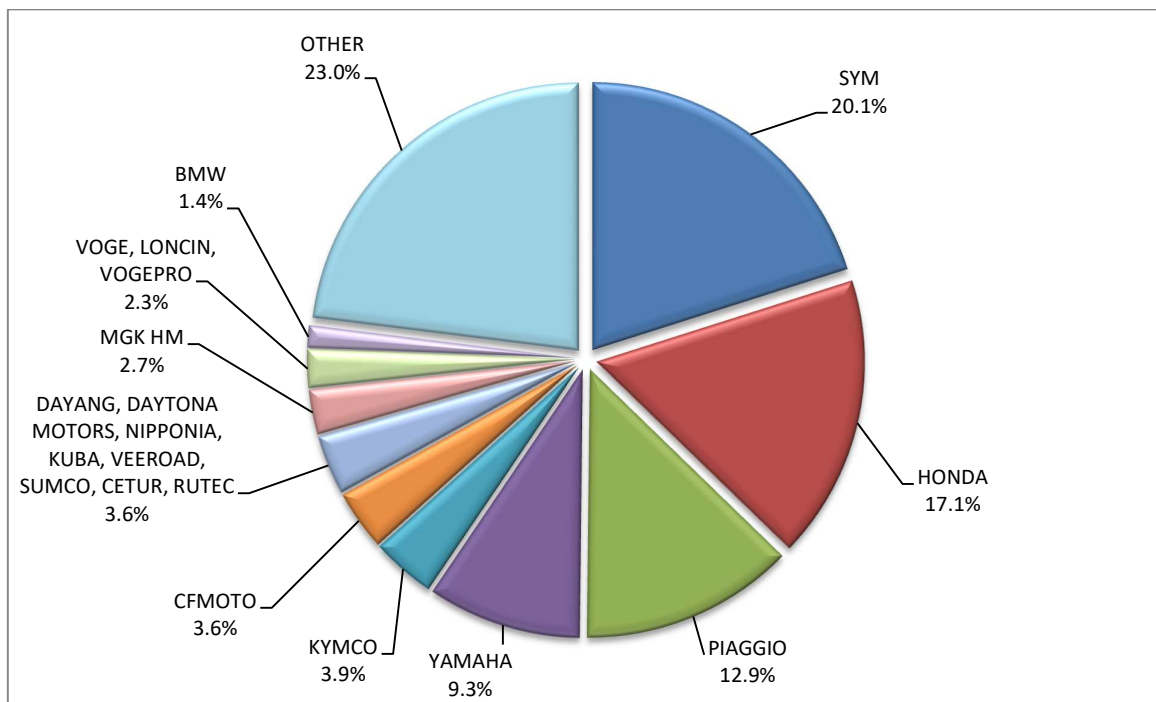
Sales of new and used motorcycles by make or manufacturer: December 2024 and January - December 2024

Make	Motorcycles			
	December		January - December	
	new	used	new	used
ZUNDAPP	-	-	-	1
ZXMCO, NIJ, DAYTONA MOTORS, PINK	2	-	23	-
TOTAL	3,166	111	77,979	3,918

Graph 13. Sales of new motorcycles (December 2024)



Graph 14. Sales of new motorcycles (January – December 2024)



EXPLANATORY NOTES

Survey on the issuing of new road motor vehicle circulation licenses	The survey on the issuing of new motor vehicle circulation licenses is a census survey. The released data give information, at country level, on the brand and type of the motor vehicle, as well as whether it is new or used. The survey does not include vehicles that move on rails, trolley busses, agricultural tractors and machinery. In addition, the following are excluded: all motor vehicles of the Armed Forces, Police, Fire Brigade, State Services, Diplomatic Corps, Foreign Missions, and Invalids of Wars, as well as motorcycles with a cylinder capacity less than 50 cc.
Legal basis	Law 3832/2010
Reference Period	December 2024
Coverage	The production of monthly data is based on the registers held by the Ministry of Infrastructure, Transport and Networks, which records all the monthly changes observed in the vehicle registration licenses at country level.
Definitions	<p>Road motor vehicle is any vehicle that, irrespective of the number of wheels, is moved by an engine and is designed to transport persons or cargo or both of them, either they are on the same single vehicle or on a trailer carried by the main motor vehicle.</p> <p>New road motor vehicle is any motor vehicle that is registered for the first time in Greece during the reference month and has not been put into circulation in any other country.</p> <p>Used motor vehicle is any motor vehicle that is registered for the first time in Greece and has been imported as a used one from abroad</p> <p>Passenger motor vehicle: it is a motor vehicle designed to carry mostly people, having no more than 9 seats, including the driver's seat.</p> <p>Bus: it is a motor vehicle, which is designed to carry mostly people, having more than 10 seats, including the driver's seat. In the corresponding tables of this announcement, this category also includes articulated buses.</p> <p>Lorry: it is motor vehicle designed to carry mostly cargo. In the corresponding tables of this announcement, this category also includes tractors, tow trucks, articulated tractors, and trucks with trailers.</p> <p>Motorcycle: any two-wheeled motor vehicle, with or without sidecar, with maximum authorized design speed over 45 km/h, or in case it is powered by a combustion engine, with a cylinder capacity of 50 cc or over. In the corresponding tables of this announcement, this category also includes the three-wheeled motor vehicles – motor tricycles.</p> <p>Tricycle motor vehicle: it is a motor vehicle with three symmetrical wheels with maximum authorized design speed over 45 km/h, or in case it is powered by a combustion engine, with a cylinder capacity over the 50 cc. This category also includes four-wheel vehicles, except the light four-wheel motorcycles, whose empty vehicle tare (excluding the weight of the fuel or mixture of fuel-oil or the weight of the batteries for electric cars) is up to 400 kg in the case the vehicle is designed for passenger use or up to 550 kg in case the vehicle is designed to carry cargo and whose engine is up to 15KW.</p>
Methodology	Exhaustive Survey. The primary data derive from the Ministry of Infrastructure, Transport and Networks and are based on the issuing of new circulation licenses as they are registered by the Regional Offices for Transport and Communications.
References	More information (graphs, tables) concerning the survey on the issuing of new motor vehicle circulation licenses are available on the webpage of ELSTAT, www.statistics.gr , under the link http://www.statistics.gr/en/statistics/-/publication/SME24/