



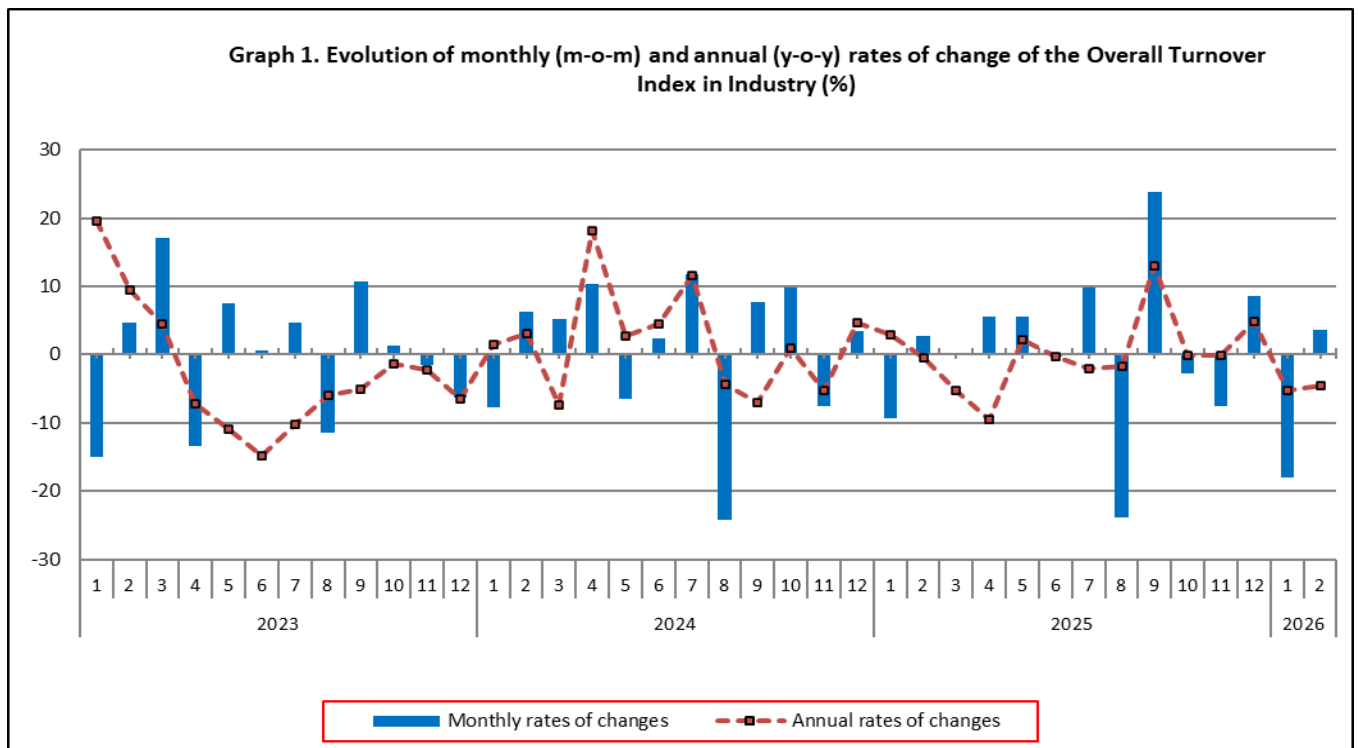
## TURNOVER INDEX IN INDUSTRY February 2026, y-o-y decrease of 4.6%

The Hellenic Statistical Authority announces the Turnover Index in Industry with base year 2021=100.0 for February 2026, the evolution of which on the basis of provisional data, is as follows:

The Overall Turnover Index in Industry (both Domestic and Non-Domestic Market) in February 2026 recorded a decrease of 4.6% compared with the corresponding index of February 2025. The Overall Turnover Index in Industry in February 2025 decreased by 0.4% compared with the corresponding index in February 2024 (Table 1).

The Overall Turnover Index in Industry in February 2026, compared with January 2026, recorded an increase of 3.5% (Table 6).

The average Overall Turnover Index in Industry for the 12-month period from March 2025 to February 2026 decreased by 0.8%, compared with the corresponding index of the 12-month period from March 2024 to February 2025. The average Overall Turnover Index in Industry for the 12-month period from March 2024 to February 2025 increased by 1.6% compared with the corresponding index of the 12-month period from March 2023 to February 2024 (Table 13).



### Information on methodological issues:

Division of Business Statistics  
Section of Manufacture-Construction Indices and Industrial Products  
Deputy Head of Section: Vlachokosta Evrydiki  
Tel: +30 213 135 2056  
E-mail: [e.vlachokosta@statistics.gr](mailto:e.vlachokosta@statistics.gr)

### Information on data provision:

Tel: +30 213 135 2022, 2308, 2310  
E-mail: [data.dissem@statistics.gr](mailto:data.dissem@statistics.gr)

## Evolution of the Overall Turnover Index in Industry in February 2026

### I. Annual changes of the Overall Turnover Index in Industry: February 2026 / February 2025

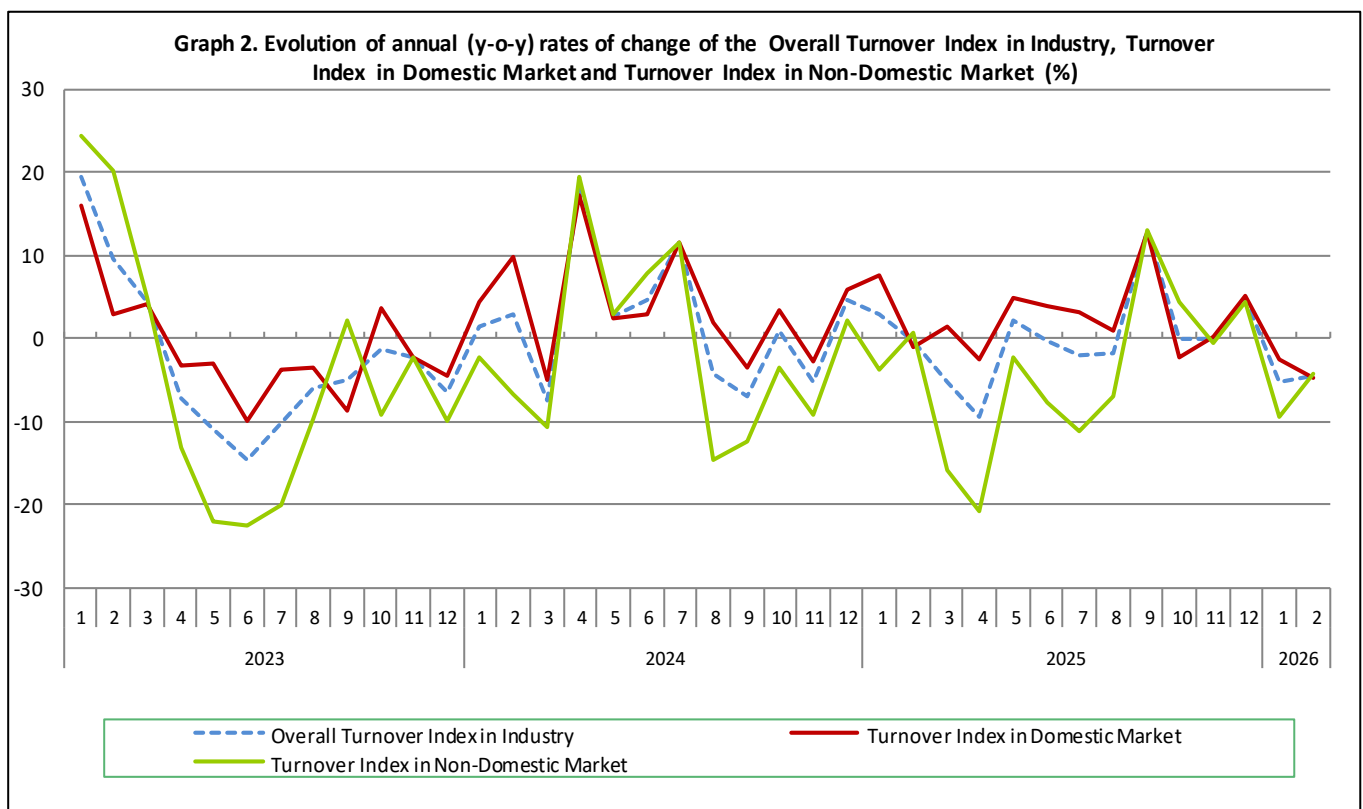
The 4.6% decrease of the Overall Turnover Index in Industry in February 2026, compared with the corresponding index in February 2025, was due to the following:

#### 1. Changes in the sub-indices of the industrial sections (Table 1):

- The Turnover Index in Manufacturing decreased by 4.7%. The decrease was mainly the result of the annual changes of the sub-indices in the following 2-digit divisions: other transport equipment, coke and refined petroleum products, electrical equipment, computers, electronic and optical products.
- The Turnover Index in Mining and quarrying increased by 5.9%. The increase was the result of the annual change of the sub-index in the following 2-digit division: other mining and quarrying products.

#### 2. Changes in the sub-indices in Domestic and Non-Domestic Markets:

- The Turnover Index in Industry in Domestic Market decreased by 4.7% (Table 2).
- The Turnover Index in Industry in Non-Domestic Market decreased by 4.4% (Table 3).



### II. Annual changes of the Turnover Index in Industry in Domestic Market: February 2026 / February 2025

The 4.7% decrease of the Turnover Index in Industry in Domestic Market in February 2026, compared with February 2025, is due to the annual changes in the sub-indices of the following industrial sections (Table 2):

- The Turnover Index in Manufacturing decreased by 5.0%. The decrease was mainly the result of the annual changes of the sub-indices in the following 2-digit divisions: other transport equipment, coke and refined petroleum products, electrical equipment, machinery and equipment n.e.c.
- The Turnover Index in Mining and quarrying increased by 21.1%. The increase was the result of the annual change of the sub-index in the following 2-digit division: other mining and quarrying products.

### III. Annual changes of the Turnover Index in Industry in Non-Domestic Market: February 2026 / February 2025

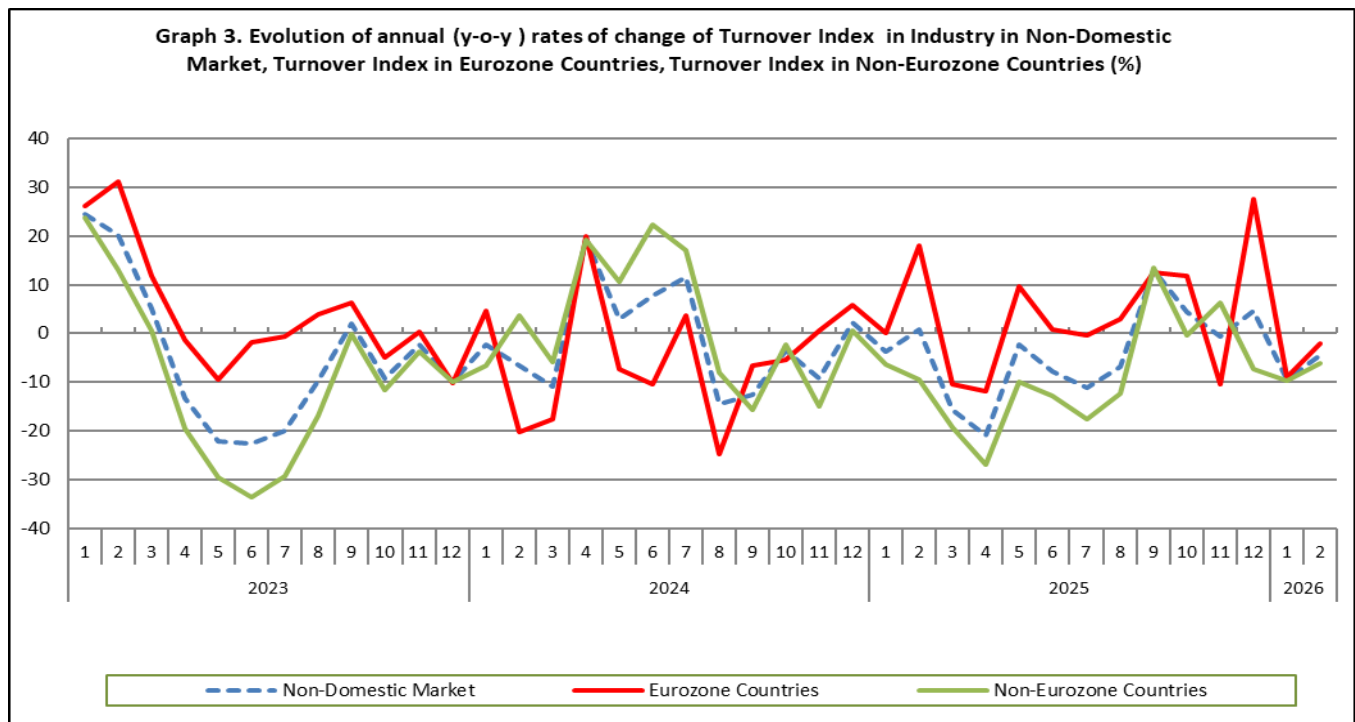
The 4.4% decrease of the Turnover Index in Industry in Non-Domestic Market in February 2026, compared with February 2025, was due to the following:

#### 1. Changes in the sub-indices of the industrial sections (Table 3):

- The Turnover Index in Mining and quarrying decreased by 16.7%. The decrease was mainly the result of the annual changes of the sub-indices in the following 2-digit divisions: mining of coal and lignite - extraction of crude petroleum and natural gas - mining support service activities, other mining and quarrying products.
- The Turnover Index in Manufacturing decreased by 4.2%. The decrease was mainly the result of the annual changes of the sub-indices in the following 2-digit divisions: repair and installation of machinery and equipment, other non-metallic mineral products, coke and refined petroleum products, fabricated metal products, except machinery and equipment.

#### 2. Changes in the sub-indices in Eurozone and Non-Eurozone countries:

- The Turnover Index in Industry in Non-Eurozone countries decreased by 6.2% (Table 5).
- The Turnover Index in Industry in Eurozone countries decreased by 2.0% (Table 4).



### IV. Monthly changes of the Overall Turnover Index in Industry: February 2026 / January 2026

The 3.5% increase of the Overall Turnover Index in Industry in February 2026, compared with the corresponding index in January 2026, was due to the following:

#### 1. Changes in the sub-indices of industrial sections (Table 6):

- The Turnover Index in Manufacturing increased by 3.6%.
- The Turnover Index in Mining and quarrying decreased by 3.1%.

#### 2. Changes in the sub-indices in Domestic and Non-Domestic Market:

- The Turnover Index in Industry in Non-Domestic Market increased by 6.7% (Table 8).
- The Turnover Index in Industry in Domestic Market increased by 1.7% (Table 7).

**Table 1. Annual rates of change of the Turnover Index in Industry: Total Market**

Base year: 2021=100.0

Code	Division	Weights	February			Rate of change (%)	
			2026*	2025*	2024	2026/2025	2025/2024
<b>OVERALL INDEX</b>			<b>114.49</b>	<b>119.97</b>	<b>120.45</b>	<b>-4.6</b>	<b>-0.4</b>
<b>B</b>	<b>MINING AND QUARRYING</b>	<b>100.00</b>	<b>111.63</b>	<b>105.41</b>	<b>138.50</b>	<b>5.9</b>	<b>-23.9</b>
<b>05-06-09</b>	Mining of coal and lignite - Extraction of crude petroleum and natural gas - Mining support service activities	6.54	24.25	78.65	365.19	-69.2	-78.5
<b>07</b>	Mining of metal ores	26.13	72.62	88.30	123.32	-17.8	-28.4
<b>08</b>	Other mining and quarrying products	67.33	135.26	114.65	122.39	18.0	-6.3
<b>C</b>	<b>MANUFACTURING</b>	<b>100.00</b>	<b>114.53</b>	<b>120.16</b>	<b>120.22</b>	<b>-4.7</b>	<b>-0.1</b>
<b>10</b>	Food	21.71	128.81	126.29	125.46	2.0	0.7
<b>11</b>	Beverages	2.99	103.68	96.82	102.72	7.1	-5.8
<b>12</b>	Tobacco products	1.42	174.86	167.93	116.68	4.1	43.9
<b>13</b>	Textiles	1.20	109.21	97.91	104.71	11.5	-6.5
<b>14</b>	Wearing apparel	1.18	95.11	88.25	101.63	7.8	-13.2
<b>15</b>	Leather and related products	0.20	95.61	86.76	84.80	10.2	2.3
<b>16</b>	Wood and products of wood and cork, except furniture	0.78	110.15	109.94	120.28	0.2	-8.6
<b>17</b>	Paper and paper products	2.44	118.75	118.35	119.16	0.3	-0.7
<b>18</b>	Printing and reproduction of recorded products	0.97	115.32	113.37	122.53	1.7	-7.5
<b>19</b>	Coke and refined petroleum products	24.35	88.45	115.87	127.20	-23.7	-8.9
<b>20</b>	Chemicals and chemical products	5.25	108.19	117.33	121.34	-7.8	-3.3
<b>21</b>	Basic pharmaceutical products and pharmaceutical preparations	4.43	144.69	139.47	131.96	3.7	5.7
<b>22</b>	Rubber and plastic products	3.49	106.38	110.78	108.81	-4.0	1.8
<b>23</b>	Other non-metallic mineral products	3.42	154.39	145.23	145.01	6.3	0.2
<b>24</b>	Basic metals	11.11	119.47	113.96	107.62	4.8	5.9
<b>25</b>	Fabricated metal products, except machinery and equipment	4.58	108.38	107.83	109.96	0.5	-1.9
<b>26</b>	Computers, electronic and optical products	1.17	135.44	150.08	140.22	-9.8	7.0
<b>27</b>	Electrical equipment	3.84	122.60	138.89	110.98	-11.7	25.1
<b>28</b>	Machinery and equipment n.e.c.	1.62	104.90	109.76	102.43	-4.4	7.2
<b>29</b>	Motor vehicles, trailers and semi-trailers	0.26	134.66	90.57	77.81	48.7	16.4
<b>30</b>	Other transport equipment	0.30	98.18	132.74	156.39	-26.0	-15.1
<b>31</b>	Furniture	0.97	112.20	118.12	109.92	-5.0	7.5
<b>32</b>	Other manufacturing	0.72	91.68	90.45	96.38	1.4	-6.2
<b>33</b>	Repair and installation of machinery and equipment	1.61	139.43	120.90	104.04	15.3	16.2
<b>MAIN INDUSTRIAL GROUPINGS</b>							
<b>1</b>	Energy	24.13	88.25	115.76	128.00	-23.8	-9.6
<b>2</b>	Intermediate goods	34.47	116.05	117.32	114.49	-1.1	2.5
<b>3</b>	Capital goods	7.19	120.02	114.30	108.36	5.0	5.5
<b>4</b>	Consumer Durables	1.90	127.99	129.39	122.44	-1.1	5.7
<b>5</b>	Consumer Non-Durables	32.31	130.40	126.66	123.75	3.0	2.4

\* Provisional data

Note: The indices and the percentage changes are rounded up to two and one decimal digits, respectively, when published.

**Table 2. Annual rates of change of the Turnover Index in Industry: Domestic Market**

Base year: 2021=100.0

Code	Division	Weights	February			Rate of change (%)	
			2026*	2025*	2024	2026/2025	2025/2024
<b>OVERALL INDEX</b>			<b>117.30</b>	<b>123.08</b>	<b>124.40</b>	<b>-4.7</b>	<b>-1.1</b>
<b>B</b>	<b>MINING AND QUARRYING</b>	<b>100.00</b>	<b>183.12</b>	<b>151.28</b>	<b>138.85</b>	<b>21.1</b>	<b>8.9</b>
05-06-09	Mining of coal and lignite - Extraction of crude petroleum and natural gas - Mining support service activities	9.16	32.76	122.74	33.90	-73.3	262.0
07	Mining of metal ores	12.89	125.64	164.01	113.43	-23.4	44.6
08	Other mining and quarrying products	77.94	210.31	152.53	155.40	37.9	-1.8
<b>C</b>	<b>MANUFACTURING</b>	<b>100.00</b>	<b>116.74</b>	<b>122.84</b>	<b>124.28</b>	<b>-5.0</b>	<b>-1.2</b>
10	Food	27.12	122.17	120.79	121.64	1.1	-0.7
11	Beverages	4.38	94.94	92.45	98.07	2.7	-5.7
12	Tobacco products	1.00	160.34	145.54	124.74	10.2	16.7
13	Textiles	1.07	99.70	83.22	92.25	19.8	-9.8
14	Wearing apparel	1.21	92.65	87.27	99.10	6.2	-11.9
15	Leather and related products	0.25	93.14	77.61	84.60	20.0	-8.3
16	Wood and products of wood and cork, except furniture	1.10	105.87	107.79	120.09	-1.8	-10.2
17	Paper and paper products	3.30	117.83	118.24	118.04	-0.3	0.2
18	Printing and reproduction of recorded products	1.29	112.23	110.68	118.91	1.4	-6.9
19	Coke and refined petroleum products	15.29	101.12	144.43	161.15	-30.0	-10.4
20	Chemicals and chemical products	6.21	105.75	119.31	119.22	-11.4	0.1
21	Basic pharmaceutical products and pharmaceutical preparations	4.50	153.00	140.82	129.31	8.7	8.9
22	Rubber and plastic products	3.60	106.79	111.20	109.26	-4.0	1.8
23	Other non-metallic mineral products	3.97	186.30	164.72	161.22	13.1	2.2
24	Basic metals	8.73	112.49	112.39	107.63	0.1	4.4
25	Fabricated metal products, except machinery and equipment	5.73	116.35	111.26	110.66	4.6	0.5
26	Computers, electronic and optical products	0.49	119.44	125.35	183.65	-4.7	-31.7
27	Electrical equipment	3.46	104.13	136.29	128.85	-23.6	5.8
28	Machinery and equipment n.e.c.	1.79	99.35	114.45	99.16	-13.2	15.4
29	Motor vehicles, trailers and semi-trailers	0.36	87.67	85.42	67.80	2.6	26.0
30	Other transport equipment	0.33	66.40	131.77	146.21	-49.6	-9.9
31	Furniture	1.39	113.32	121.61	110.68	-6.8	9.9
32	Other manufacturing	0.95	79.07	78.75	90.50	0.4	-13.0
33	Repair and installation of machinery and equipment	2.48	139.29	112.84	97.32	23.4	15.9
<b>MAIN INDUSTRIAL GROUPINGS</b>							
1	Energy	15.23	100.81	144.37	160.53	-30.2	-10.1
2	Intermediate goods	35.14	116.12	119.78	120.25	-3.1	-0.4
3	Capital goods	8.91	121.25	115.43	104.76	5.0	10.2
4	Consumer Durables	2.40	112.55	105.22	105.89	7.0	-0.6
5	Consumer Non-Durables	38.32	124.31	120.53	119.59	3.1	0.8

\* Provisional data

Note: The indices and the percentage changes are rounded up to two and one decimal digits, respectively, when published.

**Table 3. Annual rates of change of the Turnover Index in Industry: Non-Domestic Market**

Base year: 2021=100.0

Code	Division	Weights	February			Rate of change (%)	
			2026*	2025*	2024	2026/2025	2025/2024
<b>OVERALL INDEX</b>			<b>110.20</b>	<b>115.24</b>	<b>114.42</b>	<b>-4.4</b>	<b>0.7</b>
<b>B</b>	<b>MINING AND QUARRYING</b>	<b>100.00</b>	<b>60.52</b>	<b>72.62</b>	<b>138.25</b>	<b>-16.7</b>	<b>-47.5</b>
05-06-09	Mining of coal and lignite - Extraction of crude petroleum and natural gas - Mining support service activities	4.66	12.27	16.66	831.00	-26.3	-98.0
07	Mining of metal ores	35.59	58.89	68.69	125.89	-14.3	-45.4
08	Other mining and quarrying products	59.75	65.25	79.32	91.60	-17.7	-13.4
<b>C MANUFACTURING</b>		<b>100.00</b>	<b>111.12</b>	<b>116.03</b>	<b>113.98</b>	<b>-4.2</b>	<b>1.8</b>
10	Food	13.38	149.56	143.47	137.41	4.2	4.4
11	Beverages	0.85	173.18	131.51	139.71	31.7	-5.9
12	Tobacco products	2.08	185.58	184.45	110.74	0.6	66.6
13	Textiles	1.40	120.39	115.18	119.37	4.5	-3.5
14	Wearing apparel	1.13	99.18	89.86	105.82	10.4	-15.1
15	Leather and related products	0.12	103.66	116.64	85.45	-11.1	36.5
16	Wood and products of wood and cork, except furniture	0.28	135.80	122.86	121.41	10.5	1.2
17	Paper and paper products	1.12	122.95	118.85	124.25	3.5	-4.4
18	Printing and reproduction of recorded products	0.48	128.25	124.60	137.64	2.9	-9.5
19	Coke and refined petroleum products	38.31	80.67	98.31	106.32	-18.0	-7.5
20	Chemicals and chemical products	3.78	114.38	112.32	126.71	1.8	-11.4
21	Basic pharmaceutical products and pharmaceutical preparations	4.32	131.34	137.31	136.21	-4.3	0.8
22	Rubber and plastic products	3.32	105.69	110.09	108.05	-4.0	1.9
23	Other non-metallic mineral products	2.57	78.47	98.88	106.42	-20.6	-7.1
24	Basic metals	14.76	125.83	115.38	107.61	9.1	7.2
25	Fabricated metal products, except machinery and equipment	2.82	83.45	97.08	107.79	-14.0	-9.9
26	Computers, electronic and optical products	2.23	140.83	158.42	125.56	-11.1	26.2
27	Electrical equipment	4.42	144.88	142.03	89.43	2.0	58.8
28	Machinery and equipment n.e.c.	1.34	116.35	100.11	109.17	16.2	-8.3
29	Motor vehicles, trailers and semi-trailers	0.10	401.05	119.77	134.55	234.8	-11.0
30	Other transport equipment	0.26	160.99	134.67	176.53	19.5	-23.7
31	Furniture	0.32	104.69	94.96	104.89	10.2	-9.5
32	Other manufacturing	0.36	143.52	138.58	120.57	3.6	14.9
33	Repair and installation of machinery and equipment	0.27	141.44	235.69	199.63	-40.0	18.1
<b>MAIN INDUSTRIAL GROUPINGS</b>							
1	Energy	37.70	80.51	98.13	107.95	-18.0	-9.1
2	Intermediate goods	33.44	115.92	113.38	105.25	2.2	7.7
3	Capital goods	4.57	116.35	110.95	119.08	4.9	-6.8
4	Consumer Durables	1.15	177.15	206.40	175.16	-14.2	17.8
5	Consumer Non-Durables	23.14	145.76	142.13	134.26	2.6	5.9

\* Provisional data

Note: The indices and the percentage changes are rounded up to two and one decimal digits, respectively, when published.

**Table 4. Annual rates of change of the Turnover Index in Industry: Eurozone Countries**

Base year: 2021=100.0

Code	Sections and main groupings	February			Rate of change (%)	
		2026*	2025*	2024	2026/2025	2025/2024
<b>OVERALL INDEX</b>		<b>138.98</b>	<b>141.78</b>	<b>120.01</b>	<b>-2.0</b>	<b>18.1</b>
<b>INDUSTRIAL SECTIONS</b>						
<b>B</b>	MINING AND QUARRYING	41.46	38.90	190.17	6.6	-79.5
<b>C</b>	MANUFACTURING	141.39	144.33	118.28	-2.0	22.0
<b>MAIN INDUSTRIAL GROUPINGS</b>						
<b>1</b>	Energy	126.76	157.45	88.62	-19.5	77.7
<b>2</b>	Intermediate goods	133.39	131.81	114.09	1.2	15.5
<b>3</b>	Capital goods	153.59	137.68	130.28	11.6	5.7
<b>4</b>	Consumer Durables	192.04	255.17	198.66	-24.7	28.4
<b>5</b>	Consumer Non-Durables	147.65	138.31	139.22	6.8	-0.7

\* Provisional data

**Table 5. Annual rates of change of the Turnover Index in Industry: Non-Eurozone Countries**

Base year: 2021=100.0

Code	Sections and main groupings	February			Rate of change (%)	
		2026*	2025*	2024	2026/2025	2025/2024
<b>OVERALL INDEX</b>		<b>94.61</b>	<b>100.86</b>	<b>111.39</b>	<b>-6.2</b>	<b>-9.4</b>
<b>INDUSTRIAL SECTIONS</b>						
<b>B</b>	MINING AND QUARRYING	77.25	102.21	92.68	-24.4	10.3
<b>C</b>	MANUFACTURING	94.88	100.84	111.67	-5.9	-9.7
<b>MAIN INDUSTRIAL GROUPINGS</b>						
<b>1</b>	Energy	69.96	84.59	112.36	-17.3	-24.7
<b>2</b>	Intermediate goods	103.62	100.40	99.02	3.2	1.4
<b>3</b>	Capital goods	98.62	98.23	113.75	0.4	-13.6
<b>4</b>	Consumer Durables	156.08	137.43	141.94	13.6	-3.2
<b>5</b>	Consumer Non-Durables	143.66	146.36	128.76	-1.8	13.7

\* Provisional data

Note: The indices and the percentage changes are rounded up to two and one decimal digits, respectively, when published.

**Table 6. Monthly rate of change of the Turnover Index in Industry: Total Market**

Base year: 2021=100.0

Code	Sections and main groupings	February 2026*	January 2026**	Rate of change (%) Feb. 2026 / Jan. 2026
<b>OVERALL INDEX</b>		<b>114.49</b>	<b>110.61</b>	<b>3.5</b>
<b>INDUSTRIAL SECTIONS</b>				
<b>B</b>	MINING AND QUARRYING	111.63	115.15	-3.1
<b>C</b>	MANUFACTURING	114.53	110.55	3.6
<b>MAIN INDUSTRIAL GROUPINGS</b>				
<b>1</b>	Energy	88.25	100.79	-12.4
<b>2</b>	Intermediate goods	116.05	106.90	8.6
<b>3</b>	Capital goods	120.02	98.97	21.3
<b>4</b>	Consumer Durables	127.99	98.14	30.4
<b>5</b>	Consumer Non-Durables	130.40	125.22	4.1

**Table 7. Monthly rate of change of the Turnover Index in Industry: Domestic Market**

Base year: 2021=100.0

Code	Sections and main groupings	February 2026*	January 2026**	Rate of change (%) Feb. 2026 / Jan. 2026
<b>OVERALL INDEX</b>		<b>117.30</b>	<b>115.39</b>	<b>1.7</b>
<b>INDUSTRIAL SECTIONS</b>				
<b>B</b>	MINING AND QUARRYING	183.12	167.79	9.1
<b>C</b>	MANUFACTURING	116.74	114.94	1.6
<b>MAIN INDUSTRIAL GROUPINGS</b>				
<b>1</b>	Energy	100.81	117.91	-14.5
<b>2</b>	Intermediate goods	116.12	112.40	3.3
<b>3</b>	Capital goods	121.25	96.02	26.3
<b>4</b>	Consumer Durables	112.55	93.02	21.0
<b>5</b>	Consumer Non-Durables	124.31	123.03	1.0

**Table 8. Monthly rate of change of the Turnover Index in Industry: Non-Domestic Market**

Base year: 2021=100.0

Code	Sections and main groupings	February 2026*	January 2026**	Rate of change (%) Feb. 2026 / Jan. 2026
<b>OVERALL INDEX</b>		<b>110.20</b>	<b>103.32</b>	<b>6.7</b>
<b>INDUSTRIAL SECTIONS</b>				
<b>B</b>	MINING AND QUARRYING	60.52	77.52	-21.9
<b>C</b>	MANUFACTURING	111.12	103.80	7.1
<b>MAIN INDUSTRIAL GROUPINGS</b>				
<b>1</b>	Energy	80.51	90.24	-10.8
<b>2</b>	Intermediate goods	115.92	98.08	18.2
<b>3</b>	Capital goods	116.35	107.77	8.0
<b>4</b>	Consumer Durables	177.15	114.43	54.8
<b>5</b>	Consumer Non-Durables	145.76	130.77	11.5

\* Provisional data \*\* Revised data

Note: The indices and the percentage changes are rounded up to two and one decimal digits, respectively, when published.

**Table 9. Monthly rate of change of the Turnover Index in Industry: Eurozone Countries**

Base year: 2021=100.0

Code	Sections and main groupings	February 2026*	January 2026**	Rate of change (%) Feb. 2026 / Jan. 2026
<b>OVERALL INDEX</b>		<b>138.98</b>	<b>121.70</b>	<b>14.2</b>
<b>INDUSTRIAL SECTIONS</b>				
<b>B</b>	MINING AND QUARRYING	41.46	53.39	-22.3
<b>C</b>	MANUFACTURING	141.39	123.39	14.6
<b>MAIN INDUSTRIAL GROUPINGS</b>				
<b>1</b>	Energy	126.76	121.61	4.2
<b>2</b>	Intermediate goods	133.39	103.98	28.3
<b>3</b>	Capital goods	153.59	146.33	5.0
<b>4</b>	Consumer Durables	192.04	142.15	35.1
<b>5</b>	Consumer Non-Durables	147.65	137.78	7.2

\* Provisional data \*\* Revised data

**Table 10. Monthly rate of change of the Turnover Index in Industry: Non-Eurozone Countries**

Base year: 2021=100.0

Code	Sections and main groupings	February 2026*	January 2026**	Rate of change (%) Feb. 2026 / Jan. 2026
<b>OVERALL INDEX</b>		<b>94.61</b>	<b>93.37</b>	<b>1.3</b>
<b>INDUSTRIAL SECTIONS</b>				
<b>B</b>	MINING AND QUARRYING	77.25	98.69	-21.7
<b>C</b>	MANUFACTURING	94.88	93.28	1.7
<b>MAIN INDUSTRIAL GROUPINGS</b>				
<b>1</b>	Energy	69.96	83.08	-15.8
<b>2</b>	Intermediate goods	103.62	93.93	10.3
<b>3</b>	Capital goods	98.62	89.42	10.3
<b>4</b>	Consumer Durables	156.08	75.23	107.5
<b>5</b>	Consumer Non-Durables	143.66	123.01	16.8

\* Provisional data \*\* Revised data

Note: The indices and the percentage changes are rounded up to two and one decimal digits, respectively, when published.

**Table 11. Evolution of the Turnover Index in Industry (y-o-y changes): Total Market**

Base year: 2021=100.0

Year and month	Overall Index (Total Market)		Turnover Index in Industry in Domestic Market		Turnover Index in Industry in Non-Domestic Market	
	Index	Annual rate of change (%)	Index	Annual rate of change (%)	Index	Annual rate of change (%)
<b>2025*:</b> 2	119.97	-0.4	123.08	-1.1	115.24	0.7
3	120.07	-5.3	130.12	1.4	104.73	-15.8
4	126.69	-9.4	140.49	-2.4	105.63	-20.9
5	133.74	2.3	145.34	4.9	116.03	-2.3
6	133.49	-0.3	147.40	3.9	112.27	-7.8
7	146.70	-2.0	164.91	3.1	118.93	-11.2
8	111.61	-1.7	125.84	1.0	89.91	-6.9
9	138.21	13.0	147.66	12.9	123.79	13.1
10	134.36	-0.1	143.05	-2.3	121.10	4.3
11	124.10	-0.2	131.11	0.1	113.40	-0.6
12	134.91	4.9	146.05	5.1	117.91	4.5
<b>2026*:</b> 1	110.61	-5.2	115.39	-2.6	103.32	-9.4
2	114.49	-4.6	117.30	-4.7	110.20	-4.4

\*Provisional data

**Table 12. Evolution of the Turnover Index in Industry (y-o-y changes): Non-Domestic Market**

Base year: 2021=100.0

Year and month	Overall Index (Non-Domestic Market)		Turnover Index in Industry in Eurozone Countries		Turnover Index in Industry in Non-Eurozone Countries	
	Index	Annual rate of change (%)	Index	Annual rate of change (%)	Index	Annual rate of change (%)
<b>2025*:</b> 2	115.24	0.7	141.78	18.1	100.86	-9.4
3	104.73	-15.8	124.36	-10.4	94.11	-19.2
4	105.63	-20.9	132.37	-11.8	91.15	-26.8
5	116.03	-2.3	142.56	9.7	101.66	-9.8
6	112.27	-7.8	128.72	0.7	103.36	-12.8
7	118.93	-11.2	141.63	-0.4	106.63	-17.6
8	89.91	-6.9	98.68	3.0	85.16	-12.2
9	123.79	13.1	135.16	12.6	117.63	13.4
10	121.10	4.3	143.27	11.8	109.10	-0.4
11	113.40	-0.6	118.55	-10.3	110.62	6.1
12	117.91	4.5	138.74	27.7	106.63	-7.3
<b>2026*:</b> 1	103.32	-9.4	121.70	-9.1	93.37	-9.7
2	110.20	-4.4	138.98	-2.0	94.61	-6.2

\*Provisional data

Note: The indices and the percentage changes are rounded up to two and one decimal digits, respectively, when published.

**Table 13. Average indices and rates of change (%) of the 12-month periods of Turnover Index in Industry: Total Market**  
**Base year: 2021=100.0**

Code	Division	Average Indices of 12-month periods			Rate of change (%)	
		March 2025*- Feb. 2026*	March 2024- Feb. 2025*	March 2023- Feb. 2024	2026/2025	2025/2024
<b>OVERALL INDEX</b>		<b>127.42</b>	<b>128.40</b>	<b>126.33</b>	<b>-0.8</b>	<b>1.6</b>
<b>B</b>	<b>MINING AND QUARRYING</b>	<b>146.94</b>	<b>129.78</b>	<b>117.28</b>	<b>13.2</b>	<b>10.7</b>
<b>05-06-09</b>	Mining of coal and lignite - Extraction of crude petroleum and natural gas - Mining support service activities	68.12	119.95	127.86	-43.2	-6.2
<b>07</b>	Mining of metal ores	150.66	123.30	108.97	22.2	13.1
<b>08</b>	Other mining and quarrying products	153.15	133.25	119.47	14.9	11.5
<b>C</b>	<b>MANUFACTURING</b>	<b>127.17</b>	<b>128.38</b>	<b>126.44</b>	<b>-0.9</b>	<b>1.5</b>
<b>10</b>	Food	137.38	134.60	130.18	2.1	3.4
<b>11</b>	Beverages	148.56	147.13	136.71	1.0	7.6
<b>12</b>	Tobacco products	182.74	172.05	143.74	6.2	19.7
<b>13</b>	Textiles	111.29	106.72	108.00	4.3	-1.2
<b>14</b>	Wearing apparel	93.71	96.25	103.81	-2.6	-7.3
<b>15</b>	Leather and related products	107.12	108.96	119.19	-1.7	-8.6
<b>16</b>	Wood and products of wood and cork. except furniture	125.80	121.17	122.20	3.8	-0.8
<b>17</b>	Paper and paper products	124.85	122.04	125.02	2.3	-2.4
<b>18</b>	Printing and reproduction of recorded products	129.41	124.66	121.11	3.8	2.9
<b>19</b>	Coke and refined petroleum products	110.64	128.34	135.96	-13.8	-5.6
<b>20</b>	Chemicals and chemical products	118.75	116.16	114.94	2.2	1.1
<b>21</b>	Basic pharmaceutical products and pharmaceutical preparations	150.17	143.34	134.83	4.8	6.3
<b>22</b>	Rubber and plastic products	113.63	112.21	109.70	1.3	2.3
<b>23</b>	Other non-metallic mineral products	163.54	149.54	140.23	9.4	6.6
<b>24</b>	Basic metals	114.65	111.98	108.13	2.4	3.6
<b>25</b>	Fabricated metal products. except machinery and equipment	124.91	121.25	118.20	3.0	2.6
<b>26</b>	Computers. electronic and optical products	157.04	137.69	130.16	14.1	5.8
<b>27</b>	Electrical equipment	137.01	134.06	122.00	2.2	9.9
<b>28</b>	Machinery and equipment n.e.c.	128.24	123.80	117.59	3.6	5.3
<b>29</b>	Motor vehicles. trailers and semi-trailers	151.45	145.67	135.06	4.0	7.9
<b>30</b>	Other transport equipment	150.76	144.97	131.75	4.0	10.0
<b>31</b>	Furniture	130.07	128.80	129.06	1.0	-0.2
<b>32</b>	Other manufacturing	107.35	111.07	118.87	-3.3	-6.6
<b>33</b>	Repair and installation of machinery and equipment	153.93	137.27	123.57	12.1	11.1
<b>MAIN INDUSTRIAL GROUPINGS</b>						
<b>1</b>	Energy	110.49	128.33	135.94	-13.9	-5.6
<b>2</b>	Intermediate goods	123.81	120.44	116.46	2.8	3.4
<b>3</b>	Capital goods	137.24	127.73	122.43	7.4	4.3
<b>4</b>	Consumer Durables	148.92	140.85	139.48	5.7	1.0
<b>5</b>	Consumer Non-Durables	140.45	136.36	129.76	3.0	5.1

\*Provisional data

Note: The indices and the percentage changes are rounded up to two and one decimal digits, respectively, when published.

## METHODOLOGICAL NOTES

<b>Generally</b>	The Industrial Turnover Index is an indicator of an enterprise's business cycle showing the monthly evolution of the market of goods and services in industry. The first compilation of the Turnover Index was completed by the Hellenic Statistical Authority in 2006, with base year 2000=100.0 and is compiled from 2000 onwards.
<b>Purpose of the index</b>	The purpose of this index is to measure the monthly activity of the industrial sector in terms of value. Turnover comprises the totals invoiced by the observation units during the reference period and corresponds to the market sales of goods or services supplied to third parties. The purposes and the characteristics of the Turnover Index apply, as well, to the indices for the distinction between domestic and non-domestic turnover.
<b>Legal Framework</b>	The compilation and publication of the Turnover Index is based on the Regulation (EU) No 2019/2152 of the European Parliament and of the Council on European business statistics, as well as Commission Implementing Regulation (EU) No 2020/1197 laying down technical specifications and arrangements pursuant to Regulation (EU) No 2019/2152. Furthermore, the indices are governed by Regulation (EC) No 1893/2006 of the European Parliament and of the Council.
<b>Reference period</b>	Month.
<b>Base year</b>	2021=100.0.
<b>Revision</b>	Pursuant to the provisions of Council Regulation No 2019/2152 concerning the indices, they are updated, every five (5) years in years ending in 0 or 5, while, in the current revision 2021=100.0 due to the impact of the pandemic, they were revised with base year the year 2021.
<b>Statistical classifications</b>	At the level of classes of economic activities, the statistical classification of economic activities NACE Rev. 2 of EU was used (Regulation No 1893/2006), while at the level of main industrial groupings, the allocation of two-digit and three-digit NACE Rev. 2 headings to categories of aggregate classification was used, in accordance with Commission Regulation No 656/2007.
<b>Geographical coverage</b>	The index covers the whole Country.
<b>Coverage of economic activities</b>	The Turnover Index in Industry is compiled for all activities listed in Sections B (mining and quarrying) and C (manufacturing) of the NACE Rev. 2 statistical classification.
<b>Computation of the Index</b>	The Turnover Index in Industry is a fixed base index. This index is calculated at a first stage at the four-digit level of economic activity and subsequently, with the implementation of appropriate weighting coefficients, the index is calculated at higher levels (three-level and two-level of economic activity) as well as at the level of Main Industrial Groupings (MIGs).
<b>Publication of data</b>	The Turnover Index in Industry (2021=100.0) is released since January 2024 with October 2024 as first reference month. Data with base year 2021=100.0 are available from February 2000 onwards.
<b>References</b>	More information about the methodology concerning the compilation and calculation of the index and for the time series is available on the website of the Hellenic Statistical Authority (ELSTAT) ( <a href="http://www.statistics.gr/en/statistics/-/publication/DKT24/">http://www.statistics.gr/en/statistics/-/publication/DKT24/</a> ).