



## INDUSTRIAL PRODUCTION INDEX: October 2024, y-o-y decrease of 2.9%

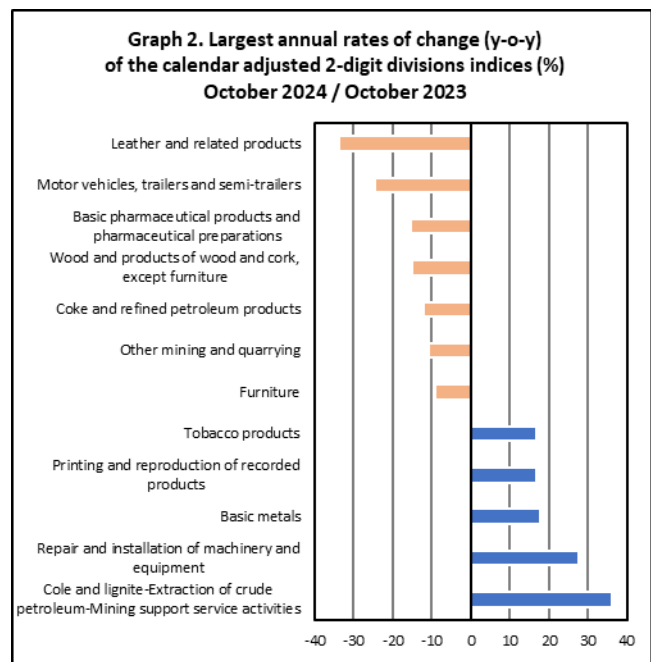
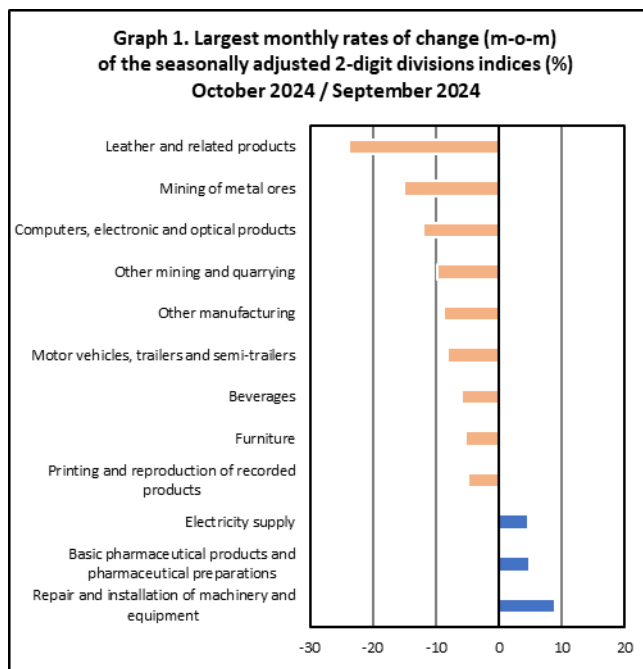
The Hellenic Statistical Authority announces the Industrial Production Index (IPI) with base year 2015=100.0 for October 2024, the evolution of which, on the basis of provisional and working day adjusted data, is as follows:

The Overall Industrial Production Index in October 2024 recorded a decrease of 2.9% compared with October 2023. The Overall IPI in October 2023 increased by 10.3% compared with the corresponding index in October 2022 (Table 1).

The average Overall Industrial Production Index for the period from January to October 2024 recorded an increase of 5.3% compared with the average IPI of the period from January to October 2023 (Table 2).

The seasonally adjusted Overall Industrial Production Index in October 2024 recorded an increase of 0.6% compared with the corresponding index of September 2024 (Table 4).

The index of repair and installation of machinery and equipment division showed the greatest percentage increase, whereas the index of leather and related products division recorded the greatest percentage decrease in October 2024 compared with September 2024. Comparing the indices of October 2024 with the corresponding indices of October 2023, the greatest percentage decrease was recorded in leather and related products division, while the highest percentage increase was recorded in mining of coal and lignite – extraction of crude petroleum and natural gas – mining support service activities divisions (Tables 1 and 4).



### Information on methodological issues:

Business Statistics Division  
Manufacture-Construction Indices and Industrial Products Section  
Head of the Section: Diamantaki Aikaterini  
Tel: +30 213 135 2056  
E-mail: [a.diamantaki@statistics.gr](mailto:a.diamantaki@statistics.gr)

### Information on data provision:

Tel: +30 213 135 2023, 2308, 2310  
E-mail: [data.dissem@statistics.gr](mailto:data.dissem@statistics.gr)

## Evolution of the Industrial Production Index in October 2024

### I. Annual changes: October 2024 / October 2023 (Table 1)

The 2.9% decrease of the working day adjusted Overall IPI in October 2024, compared with the corresponding index in October 2023, is due to the annual changes of the sub-indices in the following industrial sections:

#### Decrease of:

- 8.7% in the Mining and Quarrying Index. The decrease was the result of the annual changes of the sub-indices in the following 2-digit divisions: other mining and quarrying, mining of metal ores.
- 3.0% in the Manufacturing Index. The decrease was mainly the result of the annual changes of the sub-indices in the following 2-digit divisions: leather and related products, motor vehicles, trailers and semi-trailers, basic pharmaceutical products and pharmaceutical preparations, wood and products of wood and cork, except furniture, coke and refined petroleum products.
- 2.7% in the Electricity Supply Index.

#### Increase of:

- 3.0% in the Water Supply Index.

### II. Rates of change of the average index of the period January - October 2024 compared with the corresponding index of the period January - October 2023 (Table 2)

The 5.3% increase of the working day adjusted average Overall IPI in the 10-month period January - October 2024, compared with the corresponding index in January - October 2023, is due to the corresponding rates of change of the sub-indices in the following industrial sections:

#### Increase of:

- 10.4% in the Electricity Supply Index.
- 4.4% in the Water Supply Index.
- 4.3% in the Manufacturing Index.
- 0.04% in the Mining and Quarrying Index

### III. Monthly changes: October 2024 / September 2024 (Table 4)

The 0.6% increase of the seasonally adjusted Overall IPI in October 2024, compared with the corresponding index in September 2024 is due to the monthly changes of the sub-indices in the following industrial sections:

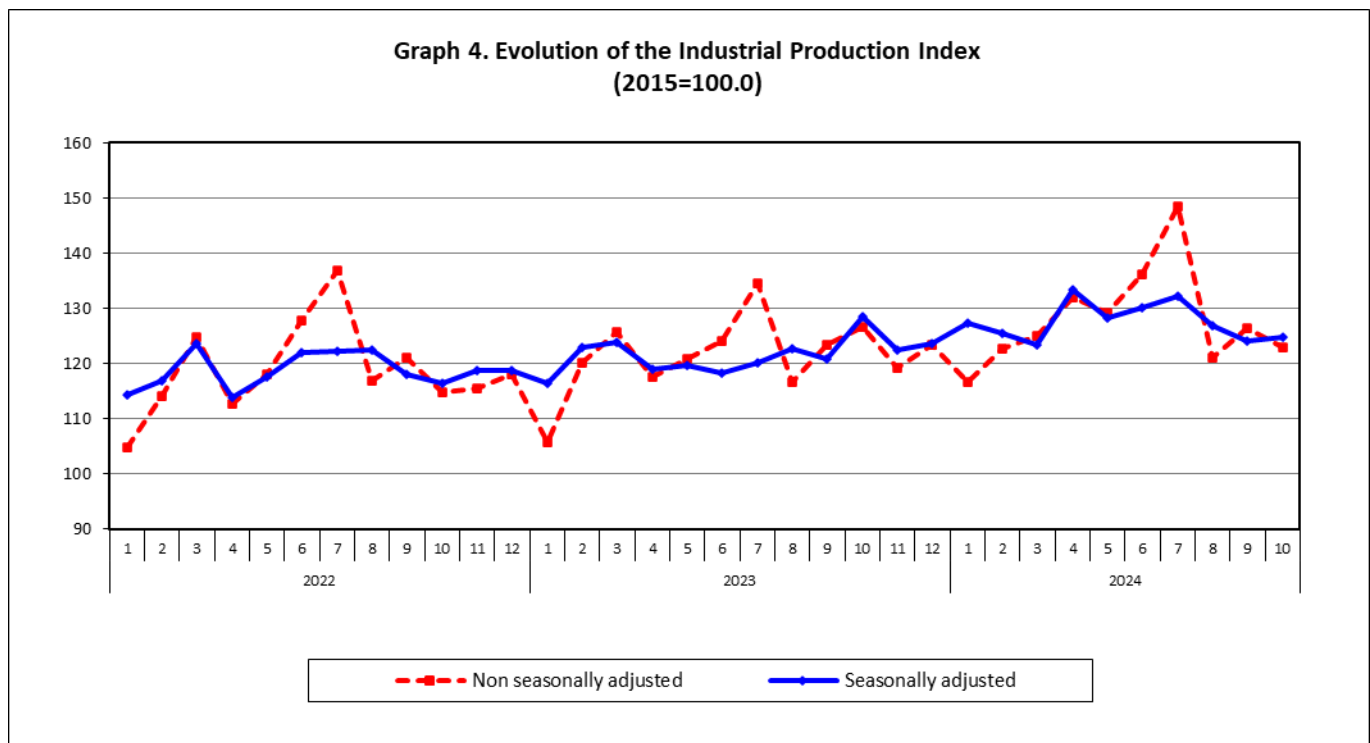
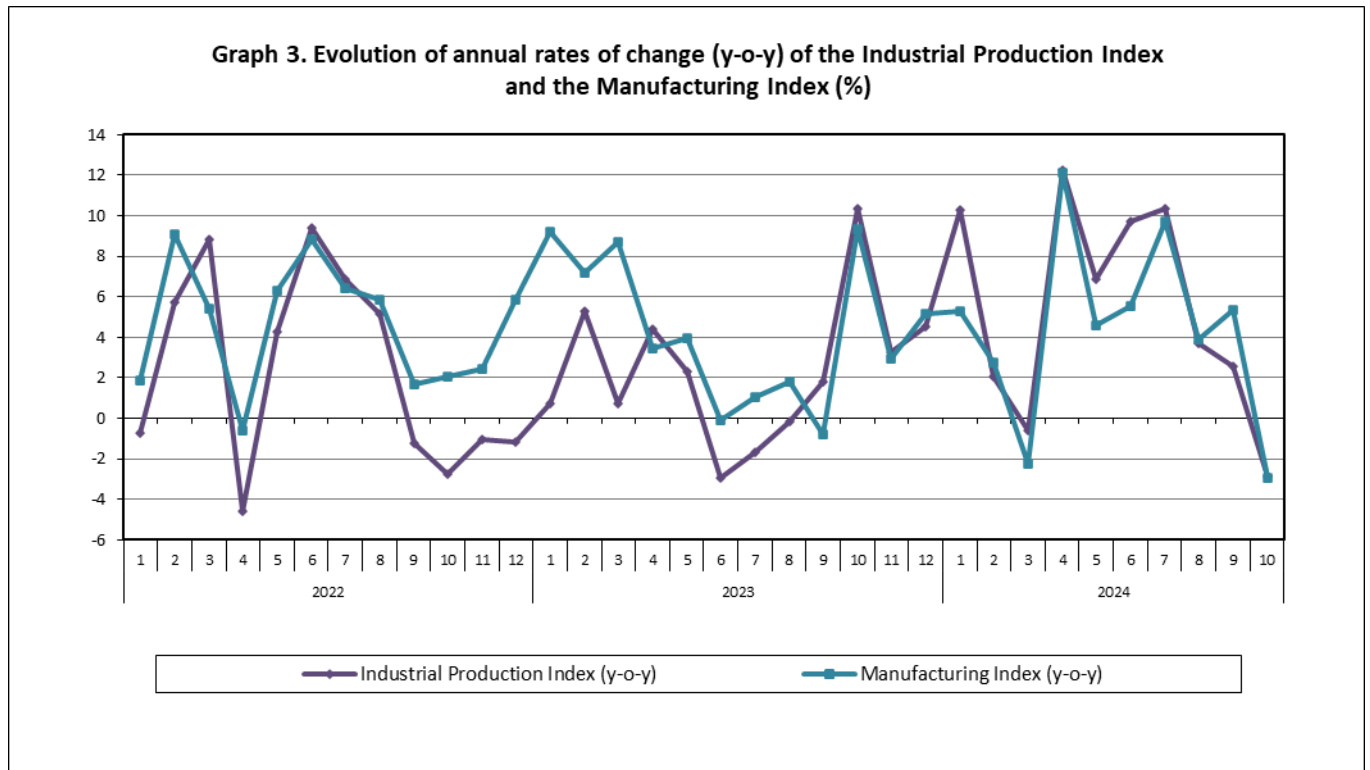
#### Increase of:

- 4.6% in the Electricity Supply Index.
- 1.8% in the Water Supply Index.
- 0.2% in the Manufacturing Index.

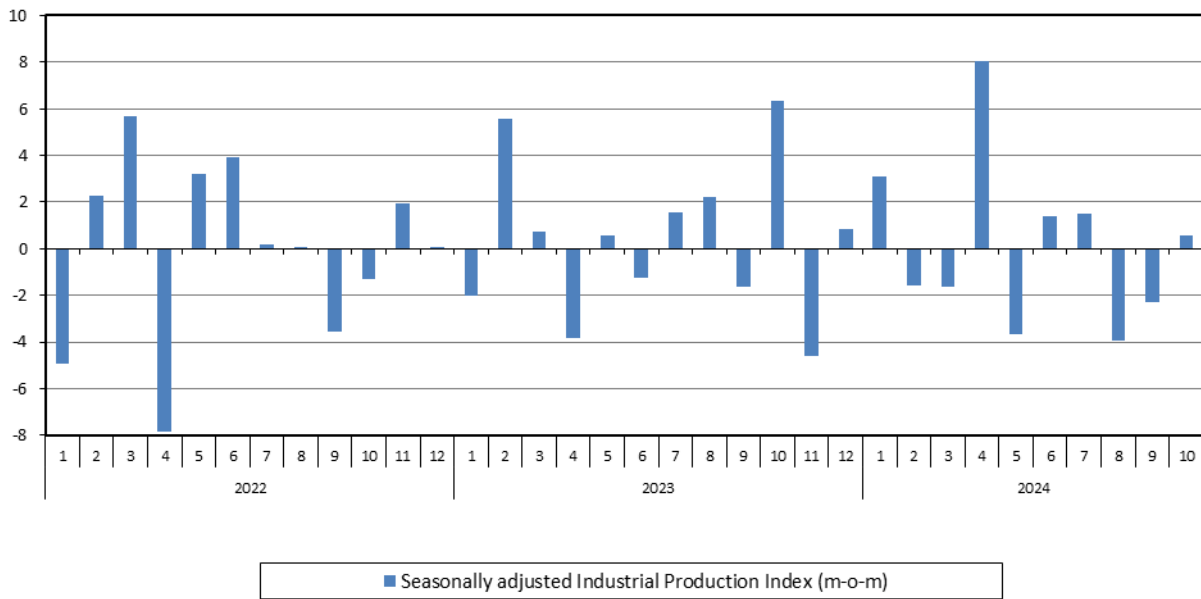
#### Decrease of:

- 8.3% in the Mining and Quarrying Index.

The following graphs depict the annual rates of change (y-o-y) of the Industrial Production Index and the Manufacturing Index, the evolution of the seasonally and non-seasonally adjusted Overall Industrial Production Index, as well as the monthly rates of change (m-o-m) of the seasonally adjusted index.



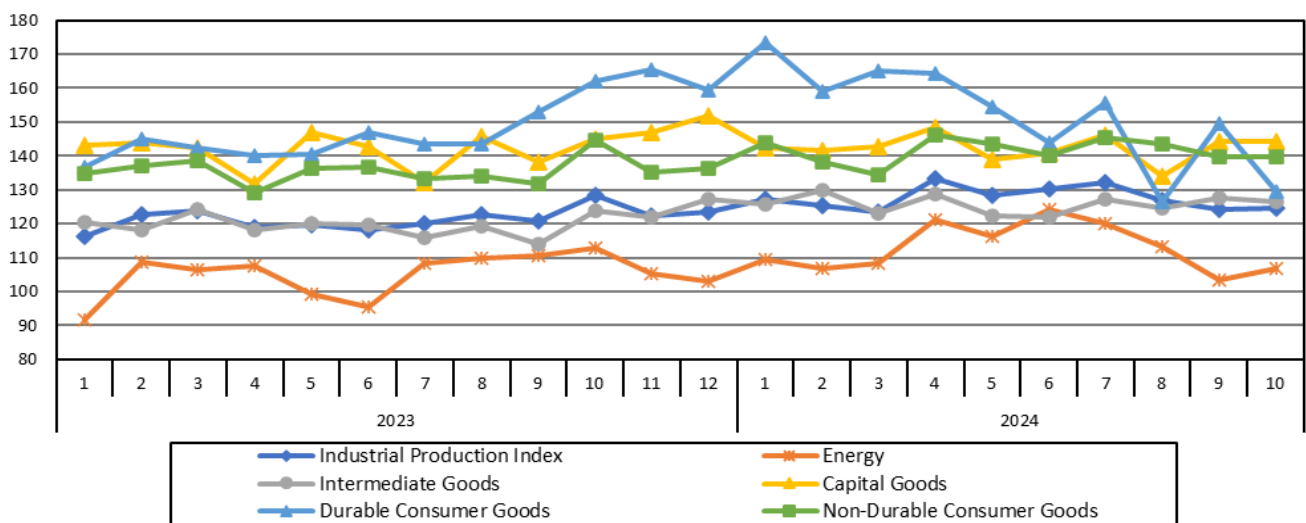
**Graph 5. Evolution of the monthly rates of change (m-o-m) of the seasonally adjusted Industrial Production Index (%)**



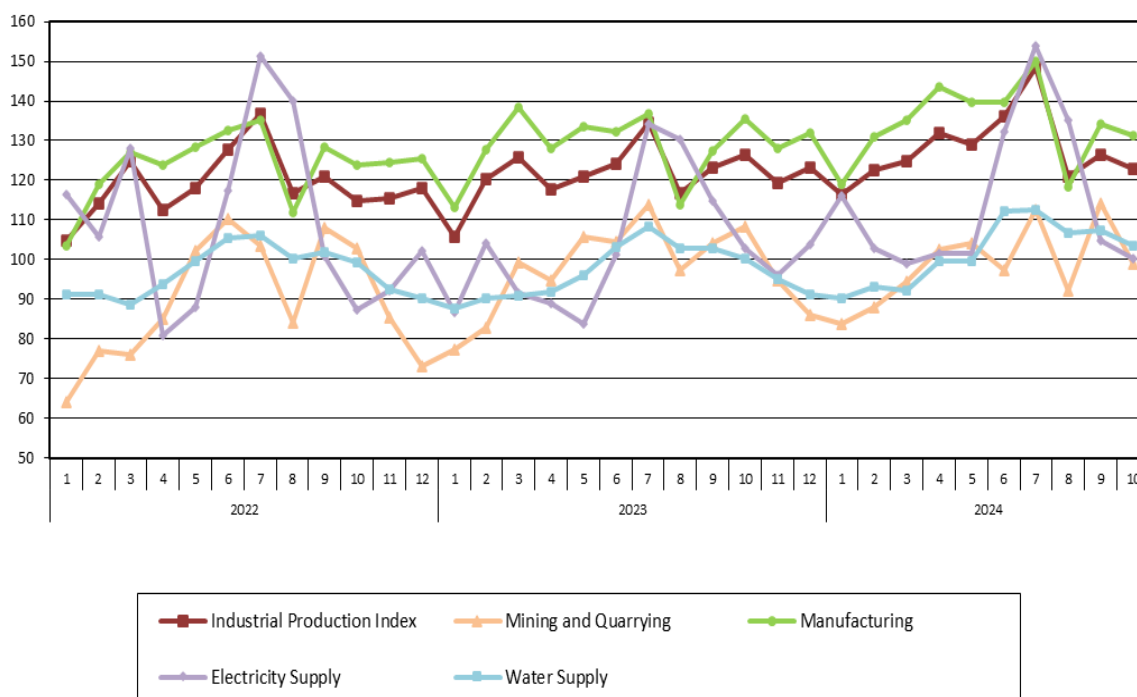
It should be noted that the time series with the seasonally adjusted indices is recalculated every time a new observation is added in the time series. Therefore, the seasonally adjusted data differ from the data published in the previous Announcement.

The following graphs depict the evolution of the seasonally adjusted Industrial Production Index and the Main Industrial Groupings, as well as the evolution of the Industrial Production Index and the Industrial Sections Indices.

**Graph 6. Evolution of the seasonally adjusted Industrial Production Index and the Main Industrial Groupings Indices, January 2023 - October 2024 (2015=100.0)**



**Graph 7. Evolution of the Industrial Production Index and the Industrial Section Indices (2015=100.0)**



**Table 1. Annual rates of change of the Industrial Production Index***(Working day adjusted data, according to the real number of working days)*

Base year: 2015=100.0

Code	Division	October			Rate of change (%)	
		2024*	2023	2022	2024/2023	2023/2022
<b>OVERALL INDEX</b>		<b>122.94</b>	<b>126.57</b>	<b>114.71</b>	<b>-2.9</b>	<b>10.3</b>
<b>B</b>	<b>MINING AND QUARRYING</b>	<b>98.82</b>	<b>108.21</b>	<b>102.79</b>	<b>-8.7</b>	<b>5.3</b>
05-06-09	Mining of coal and lignite – Extraction of crude petroleum and natural gas – Mining support service activities	34.22	25.14	30.99	36.1	-18.9
07	Mining of metal ores	120.49	129.12	117.99	-6.7	9.4
08	Other mining and quarrying	100.86	113.22	108.11	-10.9	4.7
<b>C</b>	<b>MANUFACTURING</b>	<b>131.41</b>	<b>135.42</b>	<b>123.86</b>	<b>-3.0</b>	<b>9.3</b>
10	Food	113.73	114.39	105.07	-0.6	8.9
11	Beverages	91.40	97.57	88.82	-6.3	9.9
12	Tobacco products	159.32	136.50	101.21	16.7	34.9
13	Textiles	120.38	112.67	111.23	6.8	1.3
14	Wearing apparel	69.92	70.84	85.74	-1.3	-17.4
15	Leather and related products	75.91	114.40	109.78	-33.6	4.2
16	Wood and products of wood and cork, except furniture	91.23	107.44	106.77	-15.1	0.6
17	Paper and paper products	118.74	121.15	121.40	-2.0	-0.2
18	Printing and reproduction of recorded products	155.15	132.72	122.19	16.9	8.6
19	Coke and refined petroleum products	103.40	117.84	108.07	-12.3	9.0
20	Chemicals and chemical products	128.76	130.82	124.45	-1.6	5.1
21	Basic pharmaceutical products and pharmaceutical preparations	285.22	336.55	271.87	-15.3	23.8
22	Rubber and plastic products	131.98	128.71	122.87	2.5	4.8
23	Other non-metallic mineral products	151.09	150.89	130.58	0.1	15.6
24	Basic metals	148.05	125.86	122.47	17.6	2.8
25	Fabricated metal products, except machinery and equipment	141.62	153.74	135.77	-7.9	13.2
26	Computers, electronic and optical products	219.18	220.35	251.77	-0.5	-12.5
27	Electrical equipment	163.81	162.84	132.20	0.6	23.2
28	Machinery and equipment n. e. c.	126.77	123.65	125.27	2.5	-1.3
29	Motor vehicles, trailers and semi-trailers	153.92	204.43	213.34	-24.7	-4.2
30	Other transport equipment	63.47	60.99	72.06	4.1	-15.4
31	Furniture	137.16	151.20	157.66	-9.3	-4.1
32	Other manufacturing	152.81	168.12	141.92	-9.1	18.5
33	Repair and installation of machinery and equipment	126.69	99.36	104.97	27.5	-5.3
<b>D</b>	<b>ELECTRICITY SUPPLY</b>	<b>100.14</b>	<b>102.95</b>	<b>87.46</b>	<b>-2.7</b>	<b>17.7</b>
35	Electricity supply	100.14	102.95	87.46	-2.7	17.7
<b>E</b>	<b>WATER SUPPLY</b>	<b>103.42</b>	<b>100.40</b>	<b>99.40</b>	<b>3.0</b>	<b>1.0</b>
36	Water collection, treatment and supply	103.42	100.40	99.40	3.0	1.0
<b>MAIN INDUSTRIAL GROUPINGS</b>						
1	Energy	101.40	107.24	95.09	-5.5	12.8
2	Intermediate goods	130.61	127.95	120.20	2.1	6.4
3	Capital goods	148.68	148.88	140.25	-0.1	6.2
4	Consumer Durables	128.22	164.22	156.62	-21.9	4.9
5	Consumer Non-Durables	135.96	141.07	125.29	-3.6	12.6

\* Provisional data

Note: The indices are rounded up to two decimal digits when published and percentage changes up to one decimal digit when published.

**Table 2. Average indices of the period January – October and rates of change of the Industrial Production Index**  
(Working day adjusted data, according to the real number of working days)

Base year: 2015=100.0

Code	Division	Average indices of the period Jan.-Oct.			Rate of change (%)	
		2024*	2023	2022	2024/2023	2023/2022
<b>OVERALL INDEX</b>		<b>128.02</b>	<b>121.55</b>	<b>119.18</b>	<b>5.3</b>	<b>2.0</b>
<b>B</b>	<b>MINING AND QUARRYING</b>	<b>98.82</b>	<b>98.77</b>	<b>91.34</b>	<b>0.04</b>	<b>8.1</b>
<b>05-06-09</b>	Mining of coal and lignite – Extraction of crude petroleum and natural gas – Mining support service activities	18.05	24.50	21.95	-26.3	11.6
<b>07</b>	Mining of metal ores	123.48	125.83	120.66	-1.9	4.3
<b>08</b>	Other mining and quarrying	102.21	100.38	91.46	1.8	9.8
<b>C</b>	<b>MANUFACTURING</b>	<b>134.22</b>	<b>128.71</b>	<b>123.40</b>	<b>4.3</b>	<b>4.3</b>
<b>10</b>	Food	124.83	117.94	112.86	5.8	4.5
<b>11</b>	Beverages	116.78	109.22	109.69	6.9	-0.4
<b>12</b>	Tobacco products	159.91	141.18	118.51	13.3	19.1
<b>13</b>	Textiles	109.54	109.70	112.43	-0.1	-2.4
<b>14</b>	Wearing apparel	65.66	72.70	81.59	-9.7	-10.9
<b>15</b>	Leather and related products	91.93	98.73	84.02	-6.9	17.5
<b>16</b>	Wood and products of wood and cork, except furniture	100.75	107.74	110.17	-6.5	-2.2
<b>17</b>	Paper and paper products	114.94	113.89	118.66	0.9	-4.0
<b>18</b>	Printing and reproduction of recorded products	139.00	126.33	134.21	10.0	-5.9
<b>19</b>	Coke and refined petroleum products	114.72	110.58	105.62	3.7	4.7
<b>20</b>	Chemicals and chemical products	136.88	127.24	126.87	7.6	0.3
<b>21</b>	Basic pharmaceutical products and pharmaceutical preparations	276.39	279.64	224.79	-1.2	24.4
<b>22</b>	Rubber and plastic products	128.48	125.03	128.08	2.8	-2.4
<b>23</b>	Other non-metallic mineral products	142.62	128.92	123.22	10.6	4.6
<b>24</b>	Basic metals	134.99	128.19	129.32	5.3	-0.9
<b>25</b>	Fabricated metal products, except machinery and equipment	140.74	136.09	136.05	3.4	0.0
<b>26</b>	Computers, electronic and optical products	239.12	227.72	216.90	5.0	5.0
<b>27</b>	Electrical equipment	146.51	137.81	140.36	6.3	-1.8
<b>28</b>	Machinery and equipment n. e. c.	122.68	122.28	120.83	0.3	1.2
<b>29</b>	Motor vehicles, trailers and semi-trailers	139.07	163.35	151.82	-14.9	7.6
<b>30</b>	Other transport equipment	67.87	67.94	71.44	-0.1	-4.9
<b>31</b>	Furniture	144.30	148.98	145.56	-3.1	2.3
<b>32</b>	Other manufacturing	136.59	138.08	128.83	-1.1	7.2
<b>33</b>	Repair and installation of machinery and equipment	103.84	92.95	93.11	11.7	-0.2
<b>D</b>	<b>ELECTRICITY SUPPLY</b>	<b>114.70</b>	<b>103.88</b>	<b>111.65</b>	<b>10.4</b>	<b>-7.0</b>
<b>35</b>	Electricity supply	114.70	103.88	111.65	10.4	-7.0
<b>E</b>	<b>WATER SUPPLY</b>	<b>101.77</b>	<b>97.46</b>	<b>97.75</b>	<b>4.4</b>	<b>-0.3</b>
<b>36</b>	Water collection, treatment and supply	101.77	97.46	97.75	4.4	-0.3
<b>MAIN INDUSTRIAL GROUPINGS</b>						
<b>1</b>	Energy	113.17	105.18	108.15	7.6	-2.7
<b>2</b>	Intermediate goods	126.95	120.52	121.03	5.3	-0.4
<b>3</b>	Capital goods	135.21	133.70	128.21	1.1	4.3
<b>4</b>	Consumer Durables	149.55	142.37	133.85	5.0	6.4
<b>5</b>	Consumer Non-Durables	143.79	137.87	127.95	4.3	7.8

\* Provisional data

Note: The indices are rounded up to two decimal digits when published and percentage changes up to one decimal digit when published.

**Table 3. Monthly rate of change of the Industrial Production Index**  
(Working day adjusted data, according to the real number of working days)

Base year: 2015=100.0

Code	Division	October 2024*	September 2024**	Rate of change (%) Oct. 2024/Sept. 2024
<b>OVERALL INDEX</b>		<b>122.94</b>	<b>126.44</b>	<b>-2.8</b>
<b>B</b>	<b>MINING AND QUARRYING</b>	<b>98.82</b>	<b>114.09</b>	<b>-13.4</b>
05-06-09	Mining of coal and lignite – Extraction of crude petroleum and natural gas – Mining support service activities	34.22	13.78	148.3
07	Mining of metal ores	120.49	146.86	-18.0
08	Other mining and quarrying	100.86	117.56	-14.2
<b>C</b>	<b>MANUFACTURING</b>	<b>131.41</b>	<b>134.17</b>	<b>-2.1</b>
10	Food	113.73	128.87	-11.7
11	Beverages	91.40	127.59	-28.4
12	Tobacco products	159.32	167.93	-5.1
13	Textiles	120.38	117.52	2.4
14	Wearing apparel	69.92	71.55	-2.3
15	Leather and related products	75.91	115.33	-34.2
16	Wood and products of wood and cork, except furniture	91.23	98.68	-7.6
17	Paper and paper products	118.74	124.06	-4.3
18	Printing and reproduction of recorded products	155.15	160.37	-3.3
19	Coke and refined petroleum products	103.40	104.29	-0.8
20	Chemicals and chemical products	128.76	145.64	-11.6
21	Basic pharmaceutical products and pharmaceutical preparations	285.22	217.35	31.2
22	Rubber and plastic products	131.98	133.20	-0.9
23	Other non-metallic mineral products	151.09	142.71	5.9
24	Basic metals	148.05	140.22	5.6
25	Fabricated metal products, except machinery and equipment	141.62	147.37	-3.9
26	Computers, electronic and optical products	219.18	261.06	-16.0
27	Electrical equipment	163.81	153.26	6.9
28	Machinery and equipment n. e. c.	126.77	114.97	10.3
29	Motor vehicles, trailers and semi-trailers	153.92	153.99	0.0
30	Other transport equipment	63.47	58.54	8.4
31	Furniture	137.16	141.31	-2.9
32	Other manufacturing	152.81	170.73	-10.5
33	Repair and installation of machinery and equipment	126.69	115.48	9.7
<b>D</b>	<b>ELECTRICITY SUPPLY</b>	<b>100.14</b>	<b>104.71</b>	<b>-4.4</b>
35	Electricity supply	100.14	104.71	-4.4
<b>E</b>	<b>WATER SUPPLY</b>	<b>103.42</b>	<b>107.51</b>	<b>-3.8</b>
36	Water collection, treatment and supply	103.42	107.51	-3.8
<b>MAIN INDUSTRIAL GROUPINGS</b>				
1	Energy	101.40	104.54	-3.0
2	Intermediate goods	130.61	132.86	-1.7
3	Capital goods	148.68	141.65	5.0
4	Consumer Durables	128.22	159.33	-19.5
5	Consumer Non-Durables	135.96	142.23	-4.4

\* Provisional data \*\*Revised data

Note: The indices are rounded up to two decimal digits when published and percentage changes up to one decimal digit when published.



**Table 4. Monthly rate of change of the seasonally adjusted Industrial Production Index**

Base year: 2015=100.0

Code	Division	October 2024	September 2024	Rate of change (%) Oct. 2024 /Sept. 2024
<b>OVERALL INDEX</b>		<b>124.74</b>	<b>124.05</b>	<b>0.6</b>
<b>B</b>	<b>MINING AND QUARRYING</b>	<b>90.53</b>	<b>98.70</b>	<b>-8.3</b>
<b>05-06-09</b>	Mining of coal and lignite – Extraction of crude petroleum and natural gas – Mining support service activities	-	-	-
<b>07</b>	Mining of metal ores	113.72	133.81	-15.0
<b>08</b>	Other mining and quarrying	89.49	99.12	-9.7
<b>C</b>	<b>MANUFACTURING</b>	<b>132.34</b>	<b>132.01</b>	<b>0.2</b>
<b>10</b>	Food	121.43	122.40	-0.8
<b>11</b>	Beverages	105.83	112.42	-5.9
<b>12</b>	Tobacco products	158.31	159.82	-0.9
<b>13</b>	Textiles	111.10	111.88	-0.7
<b>14</b>	Wearing apparel	64.35	63.28	1.7
<b>15</b>	Leather and related products	75.73	99.44	-23.8
<b>16</b>	Wood and products of wood and cork, except furniture	95.98	97.67	-1.7
<b>17</b>	Paper and paper products	115.32	119.62	-3.6
<b>18</b>	Printing and reproduction of recorded products	152.91	160.80	-4.9
<b>19</b>	Coke and refined petroleum products	106.14	103.45	2.6
<b>20</b>	Chemicals and chemical products	129.44	133.42	-3.0
<b>21</b>	Basic pharmaceutical products and pharmaceutical preparations	264.91	252.56	4.9
<b>22</b>	Rubber and plastic products	128.82	131.68	-2.2
<b>23</b>	Other non-metallic mineral products	140.20	139.25	0.7
<b>24</b>	Basic metals	144.09	137.97	4.4
<b>25</b>	Fabricated metal products, except machinery and equipment	138.70	141.30	-1.8
<b>26</b>	Computers, electronic and optical products	227.29	258.11	-11.9
<b>27</b>	Electrical equipment	159.86	154.88	3.2
<b>28</b>	Machinery and equipment n. e. c.	127.78	128.85	-0.8
<b>29</b>	Motor vehicles, trailers and semi-trailers	156.29	170.19	-8.2
<b>30</b>	Other transport equipment	66.14	63.67	3.9
<b>31</b>	Furniture	138.08	145.73	-5.2
<b>32</b>	Other manufacturing	144.33	158.30	-8.8
<b>33</b>	Repair and installation of machinery and equipment	126.49	116.03	9.0
<b>D</b>	<b>ELECTRICITY SUPPLY</b>	<b>107.95</b>	<b>103.16</b>	<b>4.6</b>
<b>35</b>	Electricity supply	107.95	103.16	4.6
<b>E</b>	<b>WATER SUPPLY</b>	<b>101.47</b>	<b>99.66</b>	<b>1.8</b>
<b>36</b>	Water collection, treatment and supply	101.47	99.66	1.8
<b>MAIN INDUSTRIAL GROUPINGS</b>				
<b>1</b>	Energy	106.74	103.45	3.2
<b>2</b>	Intermediate goods	126.51	127.51	-0.8
<b>3</b>	Capital goods	144.44	144.29	0.1
<b>4</b>	Consumer Durables	129.42	149.37	-13.4
<b>5</b>	Consumer Non-Durables	139.67	139.63	0.0

**Notes:**

1. The indices are rounded up to two decimal digits when published and percentage changes up to one decimal digit when published.
2. The whole time-series with seasonally adjusted indices is recalculated every time a new observation is added in the time-series.
3. The composed index of divisions 05-06-09 is not seasonally adjusted.

**Table 5. Evolution of the Overall Industrial Production Index**  
(Working day adjusted data, according to the real number of working days)

Base year: 2015=100.0

Year and month	Overall Index	Monthly rate of change (%)	Annual rate of change (%)	12-month average index (moving average)	Rate of change of the 12-month average index (%)
<b>2022:</b> 1	104.88	-12.1	-0.7	115.94	9.7
2	114.17	8.9	5.8	116.46	9.9
3	124.73	9.2	8.8	117.30	10.1
4	112.63	-9.7	-4.6	116.85	7.9
5	118.11	4.9	4.3	117.25	7.1
6	127.84	8.2	9.4	118.17	7.1
7	136.86	7.1	6.9	118.90	7.0
8	116.79	-14.7	5.1	119.38	6.6
9	121.10	3.7	-1.2	119.25	5.6
10	114.71	-5.3	-2.8	118.98	4.0
11	115.41	0.6	-1.0	118.88	3.3
12	117.96	2.2	-1.2	118.77	2.4
<b>Annual average</b>	<b>118.77</b>				
<b>2023:</b> 1	105.63	-10.5	0.7	118.83	2.5
2	120.18	13.8	5.3	119.33	2.5
3	125.66	4.6	0.7	119.41	1.8
4	117.60	-6.4	4.4	119.82	2.5
5	120.86	2.8	2.3	120.05	2.4
6	124.05	2.6	-3.0	119.73	1.3
7	134.56	8.5	-1.7	119.54	0.5
8	116.61	-13.3	-0.2	119.53	0.1
9	123.27	5.7	1.8	119.71	0.4
10	126.57	2.7	10.3	120.70	1.4
11	119.19	-5.8	3.3	121.01	1.8
12	123.30	3.4	4.5	121.46	2.3
<b>Annual average</b>	<b>121.46</b>				
<b>2024*:</b> 1	116.51	-5.5	10.3	122.36	3.0
2	122.63	5.3	2.0	122.57	2.7
3	124.92	1.9	-0.6	122.51	2.6
4	132.03	5.7	12.3	123.71	3.2
5	129.17	-2.2	6.9	124.40	3.6
6	136.14	5.4	9.8	125.41	4.7
7	148.45	9.0	10.3	126.56	5.9
8	120.94	-18.5	3.7	126.93	6.2
9	126.44	4.6	2.6	127.19	6.3
10	122.94	-2.8	-2.9	126.89	5.1

\* Provisional data

Note: The indices are rounded up to two decimal digits when published and percentage changes up to one decimal digit when published.

**Table 6. Monthly evolution of the seasonally adjusted Overall Industrial Production Index and Main Industrial Groupings**

Base year: 2015=100.0

Year and month	Overall Index		Energy		Intermediate goods		Capital goods		Consumer durables		Consumer non-durables		
	Index	Monthly rate of change (%)	Index	Monthly rate of change (%)	Index	Monthly rate of change (%)	Index	Monthly rate of change (%)	Index	Monthly rate of change (%)	Index	Monthly rate of change (%)	
<b>2022:</b>	1	114.27	-4.9	106.67	-6.3	118.68	-3.9	118.64	-7.9	118.96	0.3	118.65	-3.5
	2	116.89	2.3	102.67	-3.7	122.68	3.4	129.80	9.4	125.59	5.6	125.71	5.9
	3	123.50	5.7	120.94	17.8	119.30	-2.8	129.59	-0.2	137.14	9.2	127.55	1.5
	4	113.83	-7.8	99.08	-18.1	118.14	-1.0	129.47	-0.1	134.23	-2.1	123.14	-3.5
	5	117.45	3.2	104.05	5.0	120.29	1.8	135.97	5.0	132.68	-1.2	125.80	2.2
	6	122.04	3.9	112.10	7.7	121.84	1.3	139.86	2.9	137.93	4.0	128.70	2.3
	7	122.26	0.2	116.84	4.2	119.23	-2.1	141.53	1.2	131.07	-5.0	125.62	-2.4
	8	122.34	0.1	115.45	-1.2	121.28	1.7	138.69	-2.0	158.02	20.6	125.36	-0.2
	9	118.01	-3.5	99.99	-13.4	121.07	-0.2	141.56	2.1	136.18	-13.8	130.26	3.9
	10	116.45	-1.3	99.99	0.0	116.49	-3.8	137.76	-2.7	151.83	11.5	128.88	-1.1
	11	118.72	1.9	101.74	1.7	117.70	1.0	136.04	-1.2	143.92	-5.2	134.17	4.1
	12	118.76	0.0	101.50	-0.2	120.38	2.3	134.27	-1.3	153.42	6.6	132.48	-1.3
	<b>Annual average</b>	<b>118.71</b>		<b>106.75</b>		<b>119.76</b>		<b>134.43</b>		<b>138.42</b>		<b>127.20</b>	
<b>2023:</b>	1	116.37	-2.0	91.73	-9.6	120.53	0.1	143.20	6.7	136.74	-10.9	134.80	1.7
	2	122.87	5.6	108.72	18.5	118.19	-1.9	143.79	0.4	145.08	6.1	136.94	1.6
	3	123.79	0.7	106.37	-2.2	124.07	5.0	142.54	-0.9	142.52	-1.8	138.71	1.3
	4	119.06	-3.8	107.53	1.1	118.18	-4.7	131.63	-7.7	140.14	-1.7	129.28	-6.8
	5	119.72	0.6	99.23	-7.7	119.93	1.5	146.77	11.5	140.32	0.1	136.14	5.3
	6	118.25	-1.2	95.59	-3.7	119.73	-0.2	142.71	-2.8	147.00	4.8	136.58	0.3
	7	120.11	1.6	108.30	13.3	115.79	-3.3	132.25	-7.3	143.50	-2.4	133.33	-2.4
	8	122.77	2.2	109.67	1.3	119.30	3.0	145.90	10.3	143.53	0.0	134.16	0.6
	9	120.75	-1.7	110.71	1.0	114.15	-4.3	138.16	-5.3	152.85	6.5	131.77	-1.8
	10	128.41	6.3	112.80	1.9	123.96	8.6	145.13	5.0	161.89	5.9	144.60	9.7
	11	122.51	-4.6	105.46	-6.5	121.86	-1.7	146.86	1.2	165.61	2.3	135.01	-6.6
	12	123.54	0.8	103.13	-2.2	127.08	4.3	151.66	3.3	159.42	-3.7	136.24	0.9
	<b>Annual average</b>	<b>121.51</b>		<b>104.94</b>		<b>120.23</b>		<b>142.55</b>		<b>148.22</b>		<b>135.63</b>	
<b>2024:</b>	1	127.39	3.1	109.57	6.2	125.89	-0.9	142.26	-6.2	173.26	8.7	143.82	5.6
	2	125.38	-1.6	106.91	-2.4	130.00	3.3	141.71	-0.4	158.83	-8.3	138.10	-4.0
	3	123.31	-1.6	108.26	1.3	123.15	-5.3	142.86	0.8	165.10	3.9	134.35	-2.7
	4	133.25	8.1	121.09	11.8	128.62	4.4	148.32	3.8	164.41	-0.4	145.99	8.7
	5	128.37	-3.7	116.29	-4.0	122.21	-5.0	138.97	-6.3	154.47	-6.0	143.62	-1.6
	6	130.19	1.4	124.38	7.0	121.88	-0.3	140.88	1.4	144.00	-6.8	140.14	-2.4
	7	132.17	1.5	120.18	-3.4	127.43	4.6	146.27	3.8	155.73	8.1	145.43	3.8
	8	126.96	-3.9	113.15	-5.8	124.50	-2.3	134.09	-8.3	126.60	-18.7	143.67	-1.2
	9	124.05	-2.3	103.45	-8.6	127.51	2.4	144.29	7.6	149.37	18.0	139.63	-2.8
	10	124.74	0.6	106.74	3.2	126.51	-0.8	144.44	0.1	129.42	-13.4	139.67	0.0

- Notes:
1. The indices are rounded up to two decimal digits when published and percentage changes up to one decimal digit when published.
  2. The whole time-series with seasonally adjusted indices is recalculated every time a new observation is added in the time-series.

## METHODOLOGICAL NOTES

<b>Generally</b>	The Industrial Production Index (IPI) in Greece has been compiled by the Hellenic Statistical Authority (ELSTAT) from 1959 onwards.
<b>Purpose of the index</b>	The objective of the index is to compare the magnitude (volume) of the output in the current month in the mining and quarrying, manufacturing, electricity and water supply divisions with the corresponding output of a given fixed period, which is considered as base period. The Industrial Production Index shows the evolution of the value added of the production factors cost, at constant prices.
<b>Legal framework</b>	The compilation of the IPI is based on the framework of the implementation of Council Regulation (EC) No 1165/1998 concerning short-term statistics (STS-R). Furthermore, the IPI is governed by Regulation (EC) No 1893/2006 of the European Parliament and of the Council, by Commission Regulation (EC) No 656/2007, by Council Regulation (EC) No 451/2008, by Regulation (EU) No 2019/2152 of the European Parliament and of the Council on European business statistics, as well as Commission Implementing Regulation (EU) No 2020/1197 laying down technical specifications and arrangements pursuant to Regulation (EU) No 2019/2152.
<b>Reference period</b>	Month.
<b>Base year</b>	2015=100.0.
<b>Revision</b>	The IPI is a fixed base index. The Industrial Production Index was currently revised with new base year 2015 (2015=100.0) according to the provisions of Council Regulation No 1165/1998 concerning short-term statistics. Short-term indices are revised every five (5) years, particularly in calendar years ending in 0 or 5.
<b>Statistical classifications</b>	At the level of branches of economic activities, the statistical classification of economic activities NACE Rev.2 of EU was used (Regulation No 1893/2006), while at the level of main industrial groupings, the allocation of two-digit and three-digit NACE Rev. 2 headings to categories of aggregate classification was used, in accordance with Council Regulation No 656/2007. At product level, the statistical classification CPA 2008 of EU was used, according to Council Regulation No 451/2008.
<b>Geographical coverage</b>	The index covers the whole Country.
<b>Coverage of economic activities</b>	The index covers all the sections of industry, the main industrial groups, as well as all levels of economic activity.
<b>Statistical survey</b>	The data are collected from a sample of 1,263 enterprises. The survey covers 325 products and the measurement of the surveyed products is made in terms of output quantities or in terms of production value or turnover, according to the specific features in each branch of economic activity.
<b>Seasonal adjustment</b>	Seasonal adjustment is the procedure followed to remove the impact of seasonality on the time-series (i.e. the impact of monthly effects, e.g. holidays, tourist period etc.), in order to improve comparability over time. The method applied is TRAMO-SEATS with the use of JDemetra+ 2.0.0. For the seasonal adjustment of the Industrial Production Index at 2-digit level of NACE Rev.2, at section level (B – Mining and Quarrying, C – Manufacturing, D – Electricity and E – Water Supply) and for the Main Industrial Groupings (MIGs), the direct approach is applied, namely each time-series is seasonally adjusted independently. For the overall Industrial Production Index, the indirect approach is applied, with the seasonally adjusted IPI being computed by aggregating the seasonally adjusted MIGs using appropriate weights.
<b>Publication of data</b>	The revised IPI with the new base year 2015 (2015=100.0) is released since July 2019, with May 2019 as the first reference month. Data with base year 2015=100.0 are available from January 2000 onwards.
<b>References</b>	More information about the methodology concerning the compilation and calculation of the index and the time series are available on the website of the Hellenic Statistical Authority (ELSTAT) ( <a href="http://www.statistics.gr/en/statistics/-/publication/DKT21/-">http://www.statistics.gr/en/statistics/-/publication/DKT21/-</a> ).