

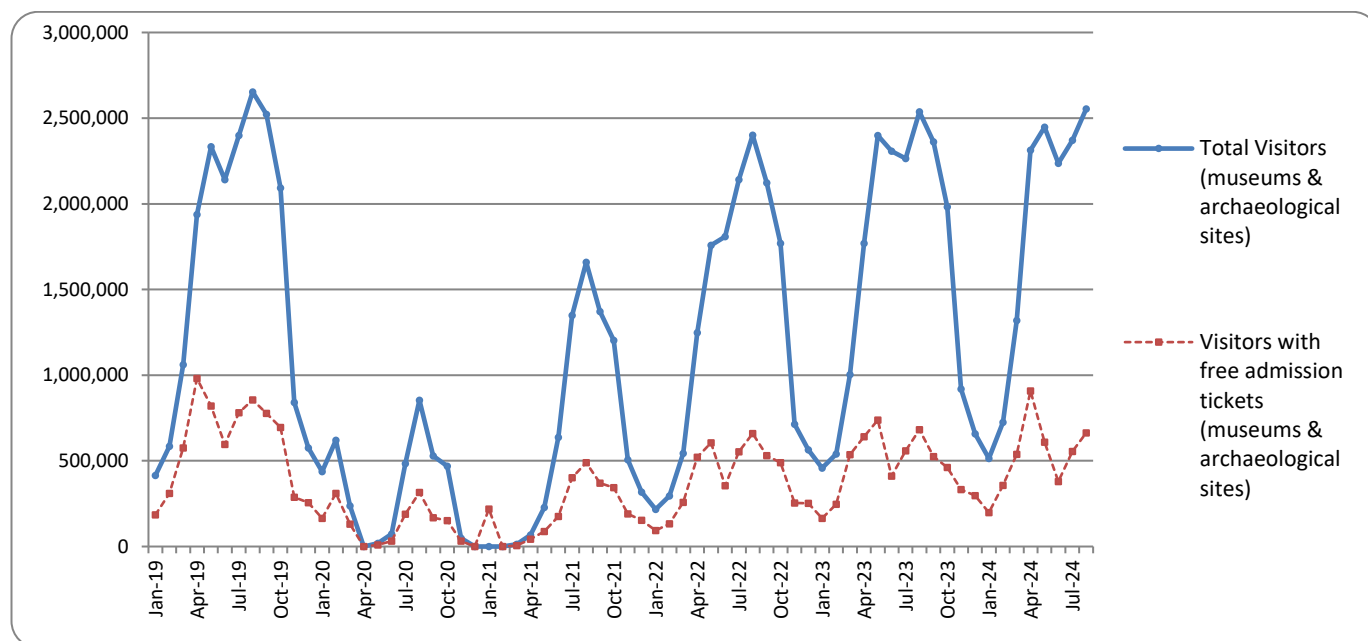


SURVEY ON MUSEUMS AND ARCHAEOLOGICAL SITES ATTENDANCE AUGUST 2024

The Hellenic Statistical Authority (ELSTAT) announces the results of the *Survey on Museums and Archaeological Sites Attendance* for August 2024. More specifically:

- During August 2024 compared with the corresponding month of 2023, museums recorded a 10.3% increase in the number of visitors, a 0.7% increase in the number of free admission visitors and a 13.8% increase in their receipts (Table 1).
- As regards archaeological sites, in August 2024 compared with the corresponding month of 2023, a decrease of 3.0% was recorded in the number of visitors, of 4.3% in the number of free admission visitors and of 2.1% in the corresponding receipts (Table 1).
- During the eight-month period from January to August 2024, compared with the corresponding period of 2023, an increase of 14.4% was recorded in the number of visitors of museums, of 1.8% in the number of free admission visitors and of 19.1% in the relevant receipts (Table 2).
- As regards archaeological sites, during the eight-month period from January to August 2024, compared with the corresponding period of 2023, an increase of 6.7% was recorded in the number of visitors, of 8.2% in the number of free admission visitors and of 6.6% in the relevant receipts (Table 2).

Graph 1: Visitors of Museums and Archaeological sites (January 2019 – August 2024)



Information on methodological issues:

Sectoral Statistics Division
Tourism and Culture Statistics Section
Head of Section: Eleni Papadopoulou
Tel: +30 213 135 2168
e-mail: e.papadopoulou@statistics.gr

Information for data provision:

Tel. +30 213 135 2022, 2308, 2310
e-mail: data.dissem@statistics.gr

TABLE 1: VISITORS OF MUSEUMS AND ARCHAEOLOGICAL SITES - TOTAL RECEIPTS
(AUGUST 2023 & AUGUST 2024)

I. NUMBER OF VISITORS			
Museums and Archaeological sites	2023	2024	Change 2024/2023
Total number of visitors (A+B)	2,537,704	2,553,293	0.6%
A. Museums (C+E)	688,976	759,620	10.3%
Acropolis Museum	205,235	196,775	-4.1%
National Archaeological	73,856	65,409	-11.4%
Ancient Olympia ⁽³⁾	11,242	35,298	214.0%
Palace of the Grand Master (Rhodes)	53,549	59,339	10.8%
Herakleion Archaeological (Crete)	48,474	65,853	35.9%
White Tower	38,958	32,504	-16.6%
Delphi ⁽³⁾	17,032	34,361	101.7%
Other museums ⁽²⁾	240,630	270,081	12.2%
B. Archaeological Sites (D+F)	1,848,728	1,793,673	-3.0%
Epidavros ⁽¹⁾	64,008	59,252	-7.4%
The Acropolis of Mycenae & Atreus' Treasure	57,243	52,091	-9.0%
The Acropolis of Athens	491,014	506,494	3.2%
Sounio	42,077	42,479	1.0%
The Acropolis of Lindos	108,220	126,440	16.8%
Royal Tombs of Vergina	15,358	17,885	16.5%
Ancient Olympia ⁽³⁾	66,357	45,367	-31.6%
Knossos (Crete)	170,958	181,677	6.3%
Phaistos (Crete)	13,591	14,277	5.0%
Ancient Korinthos ⁽¹⁾	19,703	20,542	4.3%
Mystras ⁽¹⁾	22,526	19,463	-13.6%
Delphi ⁽³⁾	51,231	28,073	-45.2%
Other archaeological sites ⁽²⁾	726,442	679,633	-6.4%
II. VISITORS WHO PAID TICKET			
	2023	2024	Change 2024/2023
Total number of visitors who paid ticket (C+D)	1,855,827	1,890,187	1.9%
C. Museums ⁽²⁾	472,262	541,460	14.7%
D. Archaeological sites ⁽²⁾	1,383,565	1,348,727	-2.5%
III. VISITORS WITH FREE ADMISSION TICKETS			
	2023	2024	Change 2024/2023
Total number of visitors with free admission ticket (E+F)	681,877	663,106	-2.8%
E. Museums	216,714	218,160	0.7%
F. Archaeological sites	465,163	444,946	-4.3%
IV. RECEIPTS (euros)			
	2023	2024	Change 2024/2023
Total Receipts (G+H)	22,476,858	22,757,541	1.2%
G. Museums	4,774,090	5,430,952	13.8%
H. Archaeological sites	17,702,768	17,326,589	-2.1%

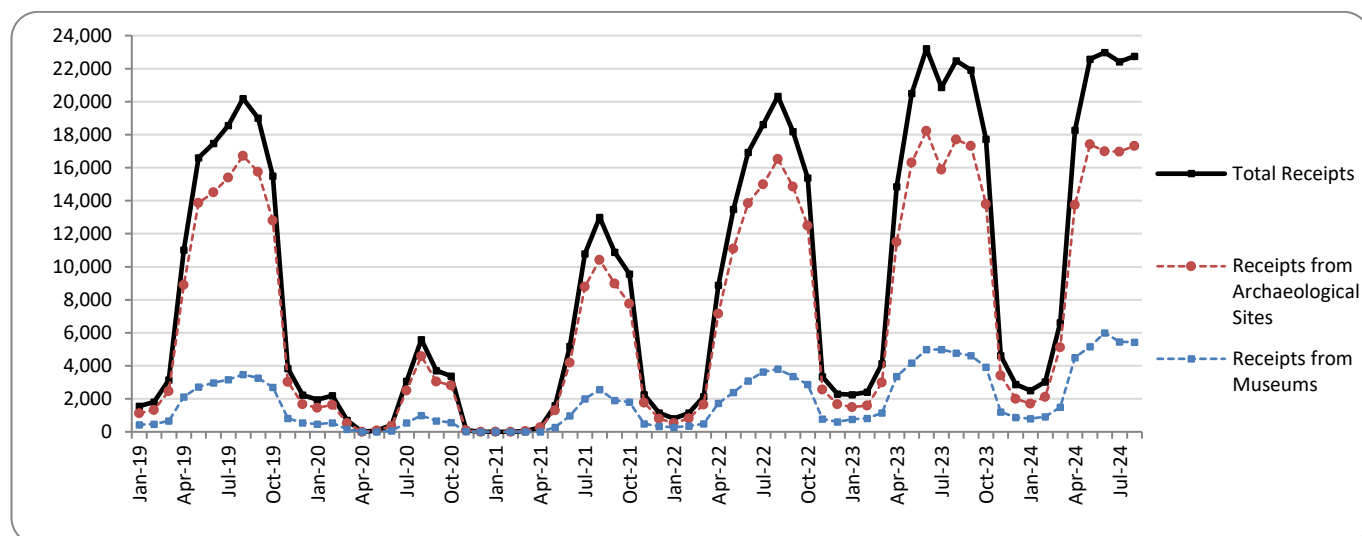
⁽¹⁾ Flat rate ticket, valid both for the museum and the archaeological site.

⁽²⁾ Revised data for 2023, due to the transmission of updated data from administrative sources.

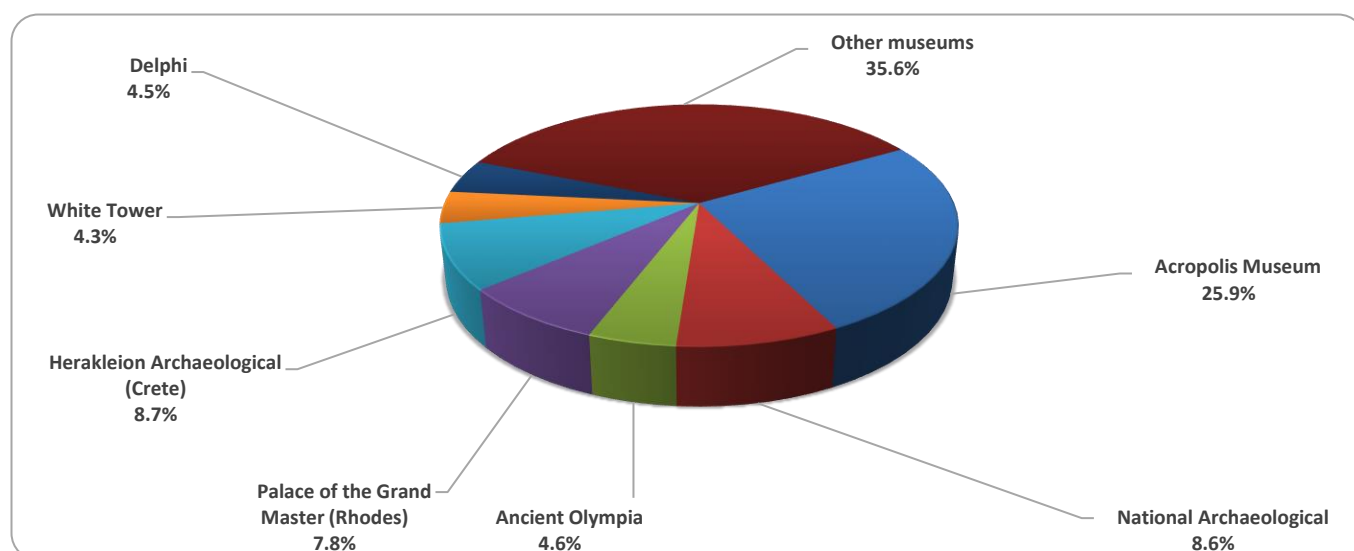
⁽³⁾ Since April 2024 tickets can be purchased online from the museums of Ancient Olympia and Delphi, covering the visit both to the museum and to the corresponding archaeological site, and cannot be monitored separately.

The following graphs depict the evolution of the receipts of Museums and Archaeological Sites (Graph 2), as well as the number of visitors by Museum (Graph 3) and by Archaeological Site (Graph 4).

Graph 2: Receipts from Museums and Archaeological Sites (January 2019 – August 2024)
(in thousand euro)



Graph 3: Percentage distribution of visitors by Museum, August 2024



Graph 4: Percentage distribution of visitors by Archaeological site, August 2024

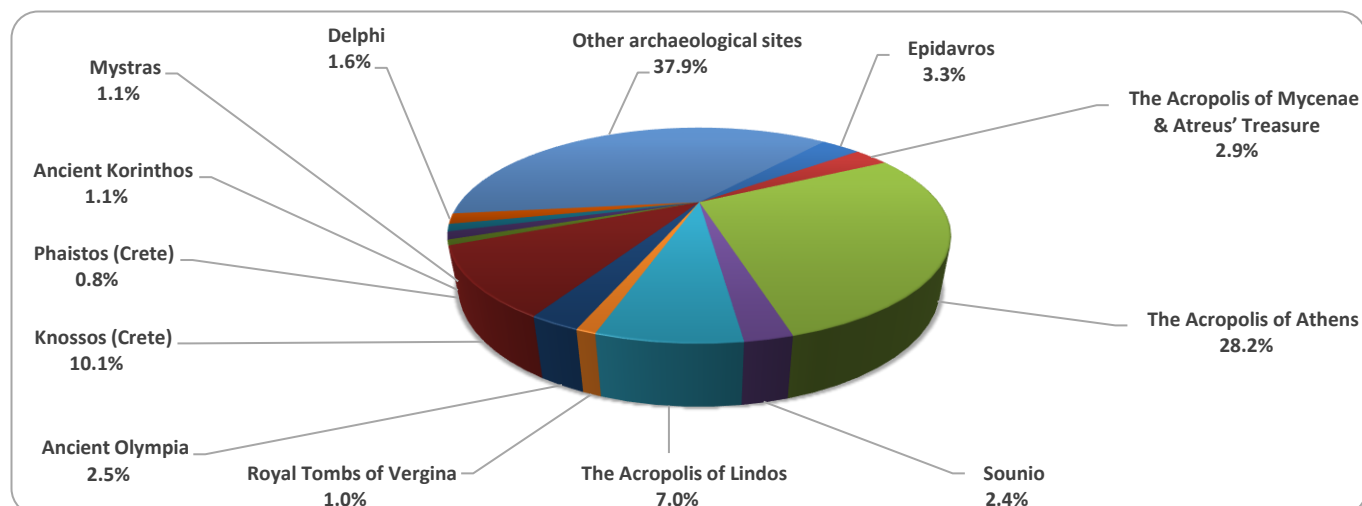


TABLE 2: VISITORS OF MUSEUMS AND ARCHAEOLOGICAL SITES - TOTAL RECEIPTS
(2022, 2023, JANUARY - AUGUST 2023, 2024)

I. VISITORS					
Museums and Archaeological sites	2022	2023	JANUARY-AUGUST		change
			2023	2024	2024/2023
Total number of visitors (A+B)	15,583,552	19,201,226	13,280,296	14,477,790	9.0%
A. Museums (C+E)	4,636,901	5,792,286	4,040,025	4,620,634	14.4%
Acropolis Museum	1,397,353	1,900,950	1,347,910	1,420,911	5.4%
National Archaeological	474,821	642,318	442,559	449,694	1.6%
Ancient Olympia ⁽³⁾	85,179	85,410	60,610	197,926	226.6%
Palace of the Grand Master (Rhodes)	263,521	333,081	227,828	245,767	7.9%
Herakleion Archaeological (Crete)	249,715	294,839	203,451	264,140	29.8%
White Tower ⁽²⁾	193,916	259,775	182,583	158,190	-13.4%
Delphi ⁽³⁾	151,512	203,445	146,465	305,873	108.8%
Other museums ⁽²⁾	1,820,884	2,072,468	1,428,619	1,578,133	10.5%
B, Archaeological Sites (D+F)	10,946,651	13,408,940	9,240,271	9,857,156	6.7%
Epidavros ⁽¹⁾	393,077	525,982	375,303	390,125	3.9%
The Acropolis of Mycenae & Atreus' Treasure	372,448	510,507	364,912	393,845	7.9%
The Acropolis of Athens	3,019,841	3,958,405	2,719,452	3,312,552	21.8%
Sounio	314,506	393,927	268,314	301,997	12.6%
The Acropolis of Lindos	596,331	629,089	434,292	472,639	8.8%
Royal Tombs of Vergina	168,444	202,122	139,783	176,532	26.3%
Ancient Olympia ⁽³⁾	338,365	481,211	327,154	222,666	-31.9%
Knossos (Crete)	831,320	959,110	666,038	708,152	6.3%
Phaistos (Crete)	74,817	79,934	54,517	58,010	6.4%
Ancient Korinthos ⁽¹⁾	153,616	210,465	134,914	162,028	20.1%
Mystras ⁽¹⁾	139,512	151,508	106,161	105,616	-0.5%
Delphi ⁽³⁾	332,870	482,293	332,409	218,520	-34.3%
Other archaeological sites ⁽²⁾	4,211,504	4,824,387	3,317,022	3,334,474	0.5%
II. VISITORS WHO PAID TICKET					
	2022	2023	JANUARY-AUGUST		change
			2023	2024	2024/2023
Total number of visitors who paid ticket (C+D)	10,877,516	13,605,359	9,301,959	10,269,111	10.4%
C. Museums ⁽²⁾	2,883,216	3,681,386	2,535,665	3,088,605	21.8%
D. Archaeological site ⁽²⁾	7,994,300	9,923,973	6,766,294	7,180,506	6.1%
III. VISITORS WITH FREE ADMISSION TICKETS					
	2022	2023	JANUARY-AUGUST		change
			2023	2024	2024/2023
Total number of visitors with free admission ticket (E+F)	4,706,036	5,595,867	3,978,337	4,208,679	5.8%
E. Museums ⁽²⁾	1,753,685	2,110,900	1,504,360	1,532,029	1.8%
F. Archaeological sites	2,952,351	3,484,967	2,473,977	2,676,650	8.2%
IV. RECEIPTS (euros)					
	2022	2023	JANUARY-AUGUST		change
			2023	2024	2024/2023
Total Receipts (G+H)	121,535,113	157,852,657	110,697,205	121,163,633	9.5%
G. Museums	23,361,465	35,617,601	24,997,991	29,784,440	19.1%
H. Archaeological sites	98,173,648	122,235,056	85,699,214	91,379,193	6.6%

⁽¹⁾ Flat rate ticket, valid both for the museum and the archaeological site.

⁽²⁾ Revised data for 2023, due to the transmission of updated data from administrative sources.

⁽³⁾ Since April 2024 tickets can be purchased online from the museums of Ancient Olympia and Delphi, covering the visit both to the museum and to the corresponding archaeological site, and cannot be monitored separately.

EXPLANATORY NOTES

Survey on Museums and Archaeological Sites Attendance	<p>The Survey on Museums and Archaeological Sites Attendance has been producing results since 1970. The survey collects data from the Hellenic Organization of Cultural Resources Development (HOCRED), supervised by the Ministry of Culture and Sports, on the number of visitors and the receipts from the tickets sold in the Museums and Archaeological sites of the country.</p> <p>The corresponding data for the Acropolis Museum is available from December 2009 onwards.</p>
Legal Framework	<p>The survey is conducted since 1970 on a regular basis and it produces results on a monthly and yearly basis, in compliance with the Joint Ministerial Decision 15189/B379/73.</p>
Reference Period	<p>1/8/2024 - 31/8/2024</p>
Methodology and Definitions	<p>The survey is conducted on a monthly basis from data mainly collected from the Hellenic Organization of Cultural Resources Development (HOCRED), supervised by the Ministry of Culture and Sports, on the number of visitors and the receipts from the tickets sold in the Museums and Archaeological sites of the Country. ELSTAT tabulates and presents the data for the whole of the Country, by month and by year.</p> <p>Number of flat rate tickets:</p> <p>From April 1999 onwards, in some museums and the nearby archaeological sites, in addition to the ordinary ticket, a new “flat rate ticket” was established, which is valid for both the museum and the nearby archaeological site. The total number of these flat rate tickets for August 2024 was 115,488</p>
References	<p>More information on the Survey on Museums and Archaeological Sites Attendance and detailed time series are available on: http://www.statistics.gr/en/statistics/-/publication/SCI21/-</p>