



PRESS RELEASE

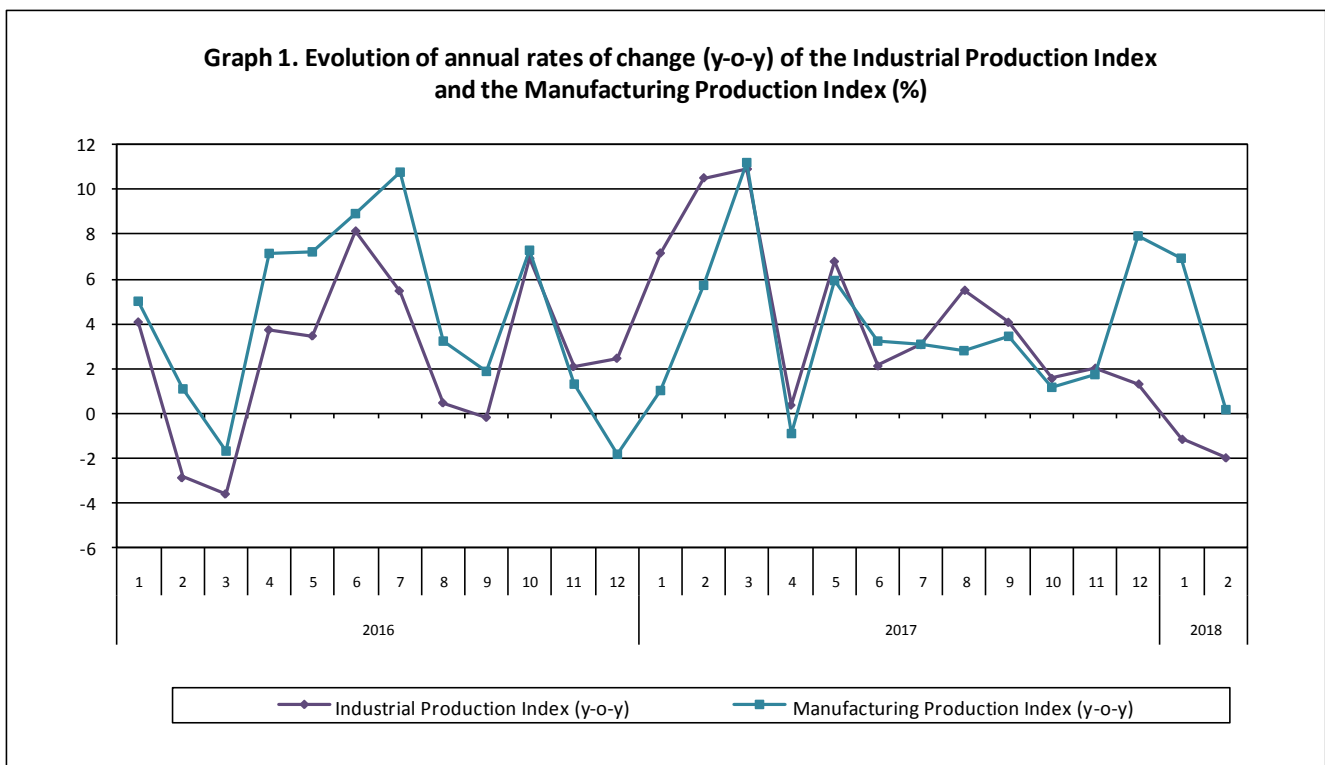
INDUSTRIAL PRODUCTION INDEX: February 2018, y-o-y decrease of 2.0%

The evolution of the Industrial Production Index (IPI) with base year 2010=100.0 in February 2018, on the basis of provisional and working day adjusted data, is as follows:

The Overall Industrial Production Index in February 2018 recorded a decrease of 2.0% compared with February 2017. The corresponding annual rate of change of the Overall IPI in February 2017 was 10.5% (Table 1).

The average Overall Industrial Production Index for the period from January to February 2018 recorded a decrease of 1.6% compared with the average IPI of the period from January to February 2017 (Table 2).

The seasonally adjusted Overall Industrial Production Index in February 2018 recorded a decrease of 2.0% compared with January 2018 (Table 4).



Information:

Economic and Short-Term Indices Division
Production Indices Section

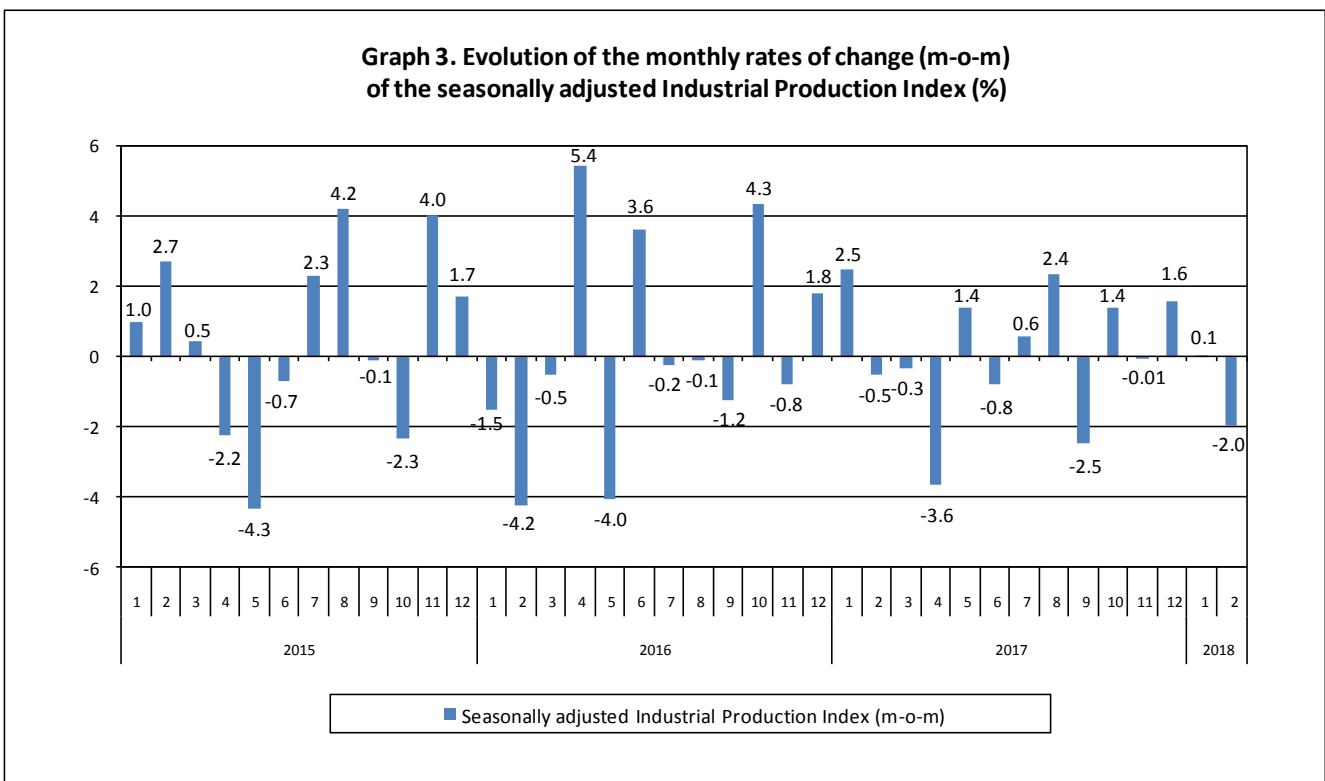
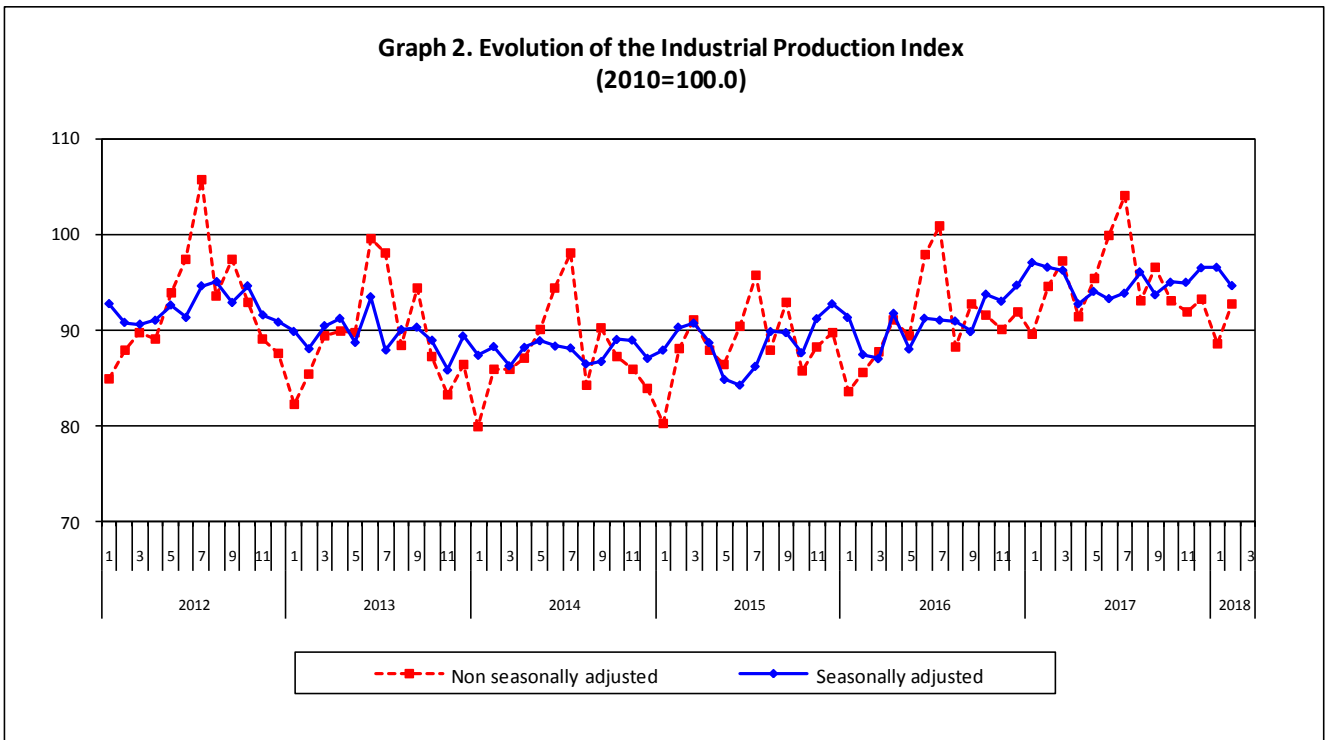
Diamantaki Aikaterini, Thymoglou Georgia

Tel: +30 213 135 2122, +30 213 135 2737

Fax: +30 213 135 2738

E-mail: a.diamantaki@statistics.gr, g.thymoglou@statistics.gr

The following graphs depict the evolution of the seasonally and non-seasonally adjusted Overall Industrial Production Index, as well as the monthly rates of change (m-o-m) of the seasonally adjusted index.



It should be noted that the time series with the seasonally adjusted indices is recalculated every time a new observation is added in the time series. Therefore, the seasonally adjusted data differ from the data published in the previous Press Release.

Evolution of the Industrial Production Index in February 2018

I. Annual changes: February 2018/ February 2017 (Table 1)

The 2.0% decrease of the working day adjusted Overall IPI in February 2018, compared with the corresponding index in February 2017, is due to the annual changes of the sub-indices in the following industrial sections:

1. Decrease of:

- 12.7% in the Mining and Quarrying Production Index. The decrease was the result of the annual changes of the sub-indices in the following 2-digit divisions: mining of coal and lignite, other mining and quarrying products.
- 6.1% in the Electricity Production Index.
- 4.0% in the Water Supply Production Index.

2. Increase of:

- 0.2% in the Manufacturing Production Index. The increase was the result of the annual changes of the sub-indices in the following 2-digit divisions: beverages, basic pharmaceutical products and pharmaceutical preparations, machinery and equipment, furniture.

II. Rates of change of the average index in the period January – February 2018 compared with the corresponding index of the period January – February 2017 (Table 2)

The 1.6% decrease of the working day adjusted Overall IPI in the 2-month period January – February 2018, compared with the corresponding index in January – February 2017, is due to the corresponding rates of change of the sub-indices in the following industrial sections:

1. Decrease of:

- 15.1% in the Electricity Production Index.
- 4.2% in the Water Supply Production Index.

2. Increase of:

- 2.8% in the Mining and Quarrying Production Index.
- 3.3% in the Manufacturing Production Index.

III. Monthly changes: February 2018/ January 2018 (Table 4)

The 2.0% decrease of the seasonally adjusted Overall IPI in February 2018, compared with the corresponding index in January 2018, is due to the monthly changes of the sub-indices in the following industrial sections:

1. Decrease of:

- 16.2% in the Mining and Quarrying Production Index.
- 2.9% in the Manufacturing Production Index.
- 0.8% in the Water Supply Production Index

2. Increase of:

- 4.1% in the Electricity Production Index.

The following graph depicts the evolution of the Industrial Production Index and the Industrial Sections Indices.

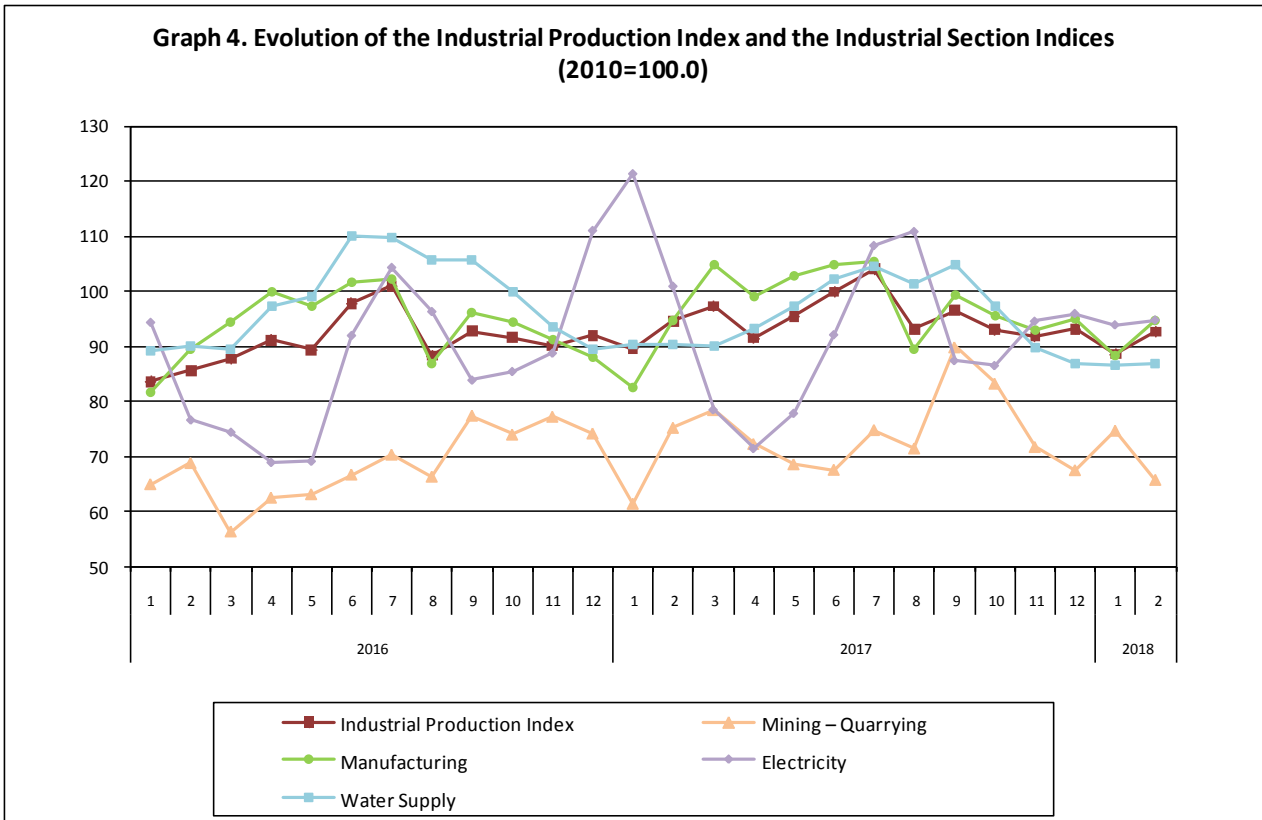


Table 1. Annual rates of change of the Industrial Production Index*(Working day adjusted data, according to the real number of working days)***Base year: 2010=100.0**

Code	Division	February			Rate of change (%)	
		2018*	2017	2016	2018/2017	2017/2016
OVERALL INDEX		92.68	94.55	85.56	-2.0	10.5
B	MINING AND QUARRYING	65.68	75.20	68.76	-12.7	9.4
05	Mining of coal and lignite	59.62	75.01	61.34	-20.5	22.3
06	Extraction of crude petroleum and natural gas	149.82	113.82	107.53	31.6	5.9
07	Mining of metal ores	79.71	72.98	84.20	9.2	-13.3
08	Other mining and quarrying products	65.53	72.72	75.53	-9.9	-3.7
C	MANUFACTURING	94.73	94.57	89.46	0.2	5.7
10	Food	90.85	91.18	91.12	-0.4	0.1
11	Beverages	77.98	67.19	70.23	16.1	-4.3
12	Tobacco products	52.25	87.88	137.87	-40.5	-36.3
13	Textiles	69.29	67.05	67.34	3.3	-0.4
14	Wearing apparel	46.05	44.40	47.65	3.7	-6.8
15	Leather and related products	56.36	59.30	55.23	-5.0	7.4
16	Wood and cork	42.27	44.02	42.79	-4.0	2.9
17	Paper and paper products	104.05	99.10	95.63	5.0	3.6
18	Printing and recording services	46.31	47.77	49.84	-3.1	-4.2
19	Coke and refined petroleum products	139.34	136.91	126.45	1.8	8.3
20	Chemicals and chemical products	110.64	106.03	104.84	4.4	1.1
21	Basic pharmaceutical products and pharmaceutical preparations	148.47	127.35	113.99	16.6	11.7
22	Rubber and plastic products	98.50	95.73	91.60	2.9	4.5
23	Other non-metallic mineral products	55.23	58.85	56.69	-6.2	3.8
24	Basic metals	120.09	141.56	110.67	-15.2	27.9
25	Fabricated metal products	82.82	90.01	75.89	-8.0	18.6
26	Computers, electronic and optical products	98.56	110.78	97.55	-11.0	13.6
27	Electrical equipment	71.97	69.45	68.15	3.6	1.9
28	Machinery and equipment n. e. c.	96.83	87.97	89.73	10.1	-2.0
29	Motor vehicles, trailers and semi-trailers	111.04	103.70	21.69	7.1	378.0
30	Other transport equipment	48.32	49.73	58.52	-2.8	-15.0
31	Furniture	50.17	41.29	39.98	21.5	3.3
32	Other manufactured goods	76.92	77.00	78.98	-0.1	-2.5
33	Repair and installation services of machinery and equipment	47.54	51.00	41.09	-6.8	24.1
D	ELECTRICITY	94.77	100.90	76.59	-6.1	31.7
35	Production and distribution of electricity	94.77	100.90	76.59	-6.1	31.7
E	WATER SUPPLY	86.83	90.45	90.02	-4.0	0.5
36	Treatment and supply services of natural water	86.83	90.45	90.02	-4.0	0.5
MAIN INDUSTRIAL GROUPINGS						
1	Energy	102.99	107.26	90.10	-4.0	19.0
2	Intermediate goods	87.75	91.15	84.23	-3.7	8.2
3	Capital goods	64.60	69.16	55.75	-6.6	24.1
4	Consumer Durables	54.73	52.18	46.53	4.9	12.1
5	Consumer Non-Durables	91.41	88.14	89.48	3.7	-1.5

* Provisional data

Note: The indices are rounded up to two decimal figures when published and percentage changes up to one decimal figure when published.

Table 2. Average indices of the period January – February and rates of change (%) of the Industrial Production Index
(Working day adjusted data, according to the real number of working days)

Base year: 2010=100.0

Code	Division	Average indices of the period Jan.-Feb.			Rate of change (%)	
		2018*	2017	2016	2018/2017	2017/2016
OVERALL INDEX		90.62	92.07	84.59	-1.6	8.8
B	MINING AND QUARRYING	70.18	68.25	66.83	2.8	2.1
05	Mining of coal and lignite	69.08	71.70	63.04	-3.6	13.7
06	Extraction of crude petroleum and natural gas	153.03	111.01	111.05	37.9	-0.04
07	Mining of metal ores	79.33	57.60	74.44	37.7	-22.6
08	Other mining and quarrying products	60.98	60.54	68.00	0.7	-11.0
C	MANUFACTURING	91.52	88.58	85.61	3.3	3.5
10	Food	89.64	86.14	87.35	4.1	-1.4
11	Beverages	67.92	56.20	66.46	20.9	-15.4
12	Tobacco products	55.42	87.86	131.03	-36.9	-32.9
13	Textiles	64.34	62.93	63.48	2.2	-0.9
14	Wearing apparel	42.26	40.56	42.69	4.2	-5.0
15	Leather and related products	41.65	41.69	43.18	-0.1	-3.5
16	Wood and cork	32.72	31.89	33.05	2.6	-3.5
17	Paper and paper products	101.82	94.76	93.53	7.4	1.3
18	Printing and recording services	42.93	41.67	46.32	3.0	-10.0
19	Coke and refined petroleum products	140.33	133.99	128.53	4.7	4.2
20	Chemicals and chemical products	100.60	95.23	98.02	5.6	-2.8
21	Basic pharmaceutical products and pharmaceutical preparations	137.23	120.81	110.57	13.6	9.3
22	Rubber and plastic products	95.44	89.00	88.40	7.2	0.7
23	Other non-metallic mineral products	52.53	53.60	51.45	-2.0	4.2
24	Basic metals	125.29	137.46	102.38	-8.9	34.3
25	Fabricated metal products	77.91	82.98	72.42	-6.1	14.6
26	Computers, electronic and optical products	105.70	101.21	79.44	4.4	27.4
27	Electrical equipment	71.04	67.21	63.51	5.7	5.8
28	Machinery and equipment n. e. c.	87.37	75.34	68.14	16.0	10.6
29	Motor vehicles, trailers and semi-trailers	94.92	91.24	20.29	4.0	349.6
30	Other transport equipment	45.65	47.86	58.94	-4.6	-18.8
31	Furniture	40.83	33.59	35.03	21.6	-4.1
32	Other manufactured goods	77.91	68.03	72.04	14.5	-5.6
33	Repair and installation services of machinery and equipment	40.06	41.67	38.77	-3.9	7.5
D	ELECTRICITY	94.33	111.13	85.47	-15.1	30.0
35	Production and distribution of electricity	94.33	111.13	85.47	-15.1	30.0
E	WATER SUPPLY	86.68	90.45	89.61	-4.2	0.9
36	Treatment and supply services of natural water	86.68	90.45	89.61	-4.2	0.9
MAIN INDUSTRIAL GROUPINGS						
1	Energy	103.92	111.60	95.53	-6.9	16.8
2	Intermediate goods	85.88	85.37	78.98	0.6	8.1
3	Capital goods	59.16	60.19	49.42	-1.7	21.8
4	Consumer Durables	47.54	43.22	41.69	10.0	3.7
5	Consumer Non-Durables	86.05	81.05	84.96	6.2	-4.6

* Provisional data

Note: The indices are rounded up to two decimal figures when published and percentage changes up to one decimal figure when published.

Table 3. Monthly rate of change of the Industrial Production Index*(Working day adjusted data, according to the real number of working days)*

Base year: 2010=100.0

Code	Division	February 2018*	January 2018**	Rate of change (%) Feb. 2018/ Jan. 2018
OVERALL INDEX		92.68	88.56	4.7
B	MINING AND QUARRYING	65.68	74.67	-12.0
05	Mining of coal and lignite	59.62	78.54	-24.1
06	Extraction of crude petroleum and natural gas	149.82	156.23	-4.1
07	Mining of metal ores	79.71	78.96	1.0
08	Other mining and quarrying products	65.53	56.42	16.1
C	MANUFACTURING	94.73	88.30	7.3
10	Food	90.85	88.44	2.7
11	Beverages	77.98	57.86	34.8
12	Tobacco products	52.25	58.60	-10.8
13	Textiles	69.29	59.39	16.7
14	Wearing apparel	46.05	38.47	19.7
15	Leather and related products	56.36	26.95	109.2
16	Wood and cork	42.27	23.18	82.4
17	Paper and paper products	104.05	99.60	4.5
18	Printing and recording services	46.31	39.56	17.1
19	Coke and refined petroleum products	139.34	141.32	-1.4
20	Chemicals and chemical products	110.64	90.56	22.2
21	Basic pharmaceutical products and pharmaceutical preparations	148.47	125.98	17.8
22	Rubber and plastic products	98.50	92.38	6.6
23	Other non-metallic mineral products	55.23	49.83	10.8
24	Basic metals	120.09	130.48	-8.0
25	Fabricated metal products	82.82	73.01	13.4
26	Computers, electronic and optical products	98.56	112.84	-12.7
27	Electrical equipment	71.97	70.11	2.6
28	Machinery and equipment n. e. c.	96.83	77.92	24.3
29	Motor vehicles, trailers and semi-trailers	111.04	78.80	40.9
30	Other transport equipment	48.32	42.98	12.4
31	Furniture	50.17	31.49	59.3
32	Other manufactured goods	76.92	78.91	-2.5
33	Repair and installation services of machinery and equipment	47.54	32.58	45.9
D	ELECTRICITY	94.77	93.89	0.9
35	Production and distribution of electricity	94.77	93.89	0.9
E	WATER SUPPLY	86.83	86.53	0.3
36	Treatment and supply services of natural water	86.83	86.53	0.3
MAIN INDUSTRIAL GROUPINGS				
1	Energy	102.99	104.84	-1.8
2	Intermediate goods	87.75	84.01	4.4
3	Capital goods	64.60	53.71	20.3
4	Consumer Durables	54.73	40.36	35.6
5	Consumer Non-Durables	91.41	80.69	13.3

* Provisional data **Revised data

Note: The indices are rounded up to two decimal figures when published and percentage changes up to one decimal figure when published.

Table 4. Monthly rate of change of the seasonally adjusted Industrial Production Index

Base year: 2010=100.0

Code	Division	February 2018*	January 2018**	Rate of change (%) Feb. 2018/ Jan. 2018
OVERALL INDEX		94.63	96.53	-2.0
B	MINING AND QUARRYING	69.74	83.21	-16.2
05	Mining of coal and lignite	62.87	79.77	-21.2
06	Extraction of crude petroleum and natural gas	146.04	152.83	-4.4
07	Mining of metal ores	87.55	99.49	-12.0
08	Other mining and quarrying products	77.05	78.57	-1.9
C	MANUFACTURING	98.07	100.97	-2.9
10	Food	95.86	99.30	-3.5
11	Beverages	89.93	88.37	1.8
12	Tobacco products	55.93	63.61	-12.1
13	Textiles	64.98	64.68	0.5
14	Wearing apparel	47.98	48.74	-1.5
15	Leather and related products	46.26	47.67	-2.9
16	Wood and cork	43.53	41.26	5.5
17	Paper and paper products	102.25	99.69	2.6
18	Printing and recording services	47.32	48.56	-2.6
19	Coke and refined petroleum products	136.50	142.27	-4.1
20	Chemicals and chemical products	107.90	105.21	2.6
21	Basic pharmaceutical products and pharmaceutical preparations	140.12	131.38	6.7
22	Rubber and plastic products	96.42	100.05	-3.6
23	Other non-metallic mineral products	61.92	63.97	-3.2
24	Basic metals	119.60	138.02	-13.3
25	Fabricated metal products	84.62	84.73	-0.1
26	Computers, electronic and optical products	101.04	129.67	-22.1
27	Electrical equipment	73.05	78.58	-7.0
28	Machinery and equipment n. e. c.	110.08	129.34	-14.9
29	Motor vehicles, trailers and semi-trailers	124.62	139.67	-10.8
30	Other transport equipment	64.81	63.33	2.3
31	Furniture	58.55	57.09	2.6
32	Other manufactured goods	90.83	107.23	-15.3
33	Repair and installation services of machinery and equipment	58.77	59.23	-0.8
D	ELECTRICITY	93.17	89.47	4.1
35	Production and distribution of electricity	93.17	89.47	4.1
E	WATER SUPPLY	94.25	95.01	-0.8
36	Treatment and supply services of natural water	94.25	95.01	-0.8
MAIN INDUSTRIAL GROUPINGS				
1	Energy	101.73	102.46	-0.7
2	Intermediate goods	89.72	95.71	-6.3
3	Capital goods	73.73	77.12	-4.4
4	Consumer Durables	60.19	60.56	-0.6
5	Consumer Non-Durables	96.05	95.51	0.6

* Provisional data ** Revised data

Notes:

1. The indices are rounded up to two decimal figures when published and percentage changes up to one decimal figure when published.
2. The whole time-series with seasonally adjusted indices is recalculated every time a new observation is added in the time-series.

Table 5. Evolution of the Overall Industrial Production Index*(Working day adjusted data, according to the real number of working days)***Base year: 2010=100.0**

Year and month	Overall Index	Monthly rate of change (%)	Annual rate of change (%)	12-month average indices (moving average)	Rate of change of the 12-month average indices (%)
2016: 1	83.61	-6.9	4.1	88.96	1.3
2	85.56	2.3	-2.9	88.75	0.9
3	87.73	2.5	-3.6	88.48	0.1
4	91.13	3.9	3.7	88.75	0.3
5	89.36	-1.9	3.5	89.00	1.0
6	97.82	9.5	8.1	89.61	2.0
7	100.94	3.2	5.5	90.05	2.8
8	88.29	-12.5	0.5	90.08	2.5
9	92.77	5.1	-0.2	90.07	2.2
10	91.60	-1.3	6.9	90.56	2.9
11	90.01	-1.7	2.1	90.72	2.8
12	91.98	2.2	2.5	90.90	2.5
Annual average	90.90	–	–	90.90	2.5
2017: 1	89.59	-2.6	7.1	91.40	2.7
2	94.55	5.5	10.5	92.15	3.8
3	97.29	2.9	10.9	92.94	5.0
4	91.47	-6.0	0.4	92.97	4.8
5	95.41	4.3	6.8	93.48	5.0
6	99.89	4.7	2.1	93.65	4.5
7	104.03	4.1	3.1	93.91	4.3
8	93.14	-10.5	5.5	94.31	4.7
9	96.54	3.7	4.1	94.62	5.1
10	93.03	-3.6	1.6	94.74	4.6
11	91.82	-1.3	2.0	94.89	4.6
12	93.18	1.5	1.3	94.99	4.5
Annual average	94.99	–	–	94.99	4.5
2018: 1**	88.56	-5.0	-1.2	94.91	3.8
2*	92.68	4.7	-2.0	94.75	2.8

* Provisional data ** Revised data

Note: The indices are rounded up to two decimal figures when published and percentage changes up to one decimal figure when published.

Table 6. Monthly evolution of the seasonally adjusted Overall Industrial Production Index and Main Industrial Groupings

Base year: 2010=100.0

Year and month	Overall Index		Energy		Intermediate goods		Capital goods		Consumer durables		Consumer non-durables		
	Index	Monthly rate of change (%)	Index	Monthly rate of change (%)	Index	Monthly rate of change (%)	Index	Monthly rate of change (%)	Index	Monthly rate of change (%)	Index	Monthly rate of change (%)	
2016:	1	91.32	-1.5	98.91	-1.3	84.20	-2.4	63.40	-11.2	54.35	-21.3	95.85	1.5
	2	87.46	-4.2	89.04	-10.0	86.01	2.2	65.04	2.6	51.51	-5.2	93.82	-2.1
	3	87.02	-0.5	87.61	-1.6	86.44	0.5	66.91	2.9	53.37	3.6	93.28	-0.6
	4	91.74	5.4	94.63	8.0	89.01	3.0	70.39	5.2	58.50	9.6	97.05	4.0
	5	88.03	-4.0	92.95	-1.8	83.42	-6.3	69.43	-1.4	55.89	-4.5	91.57	-5.6
	6	91.23	3.6	92.78	-0.2	92.89	11.4	73.66	6.1	56.52	1.1	93.53	2.1
	7	91.03	-0.2	96.52	4.0	85.83	-7.6	71.95	-2.3	59.07	4.5	94.43	1.0
	8	90.94	-0.1	96.89	0.4	89.05	3.8	77.87	8.2	60.57	2.5	89.14	-5.6
	9	89.84	-1.2	98.23	1.4	85.51	-4.0	74.97	-3.7	55.75	-8.0	87.53	-1.8
	10	93.74	4.3	103.20	5.1	87.64	2.5	74.75	-0.3	56.83	1.9	92.70	5.9
	11	93.00	-0.8	101.09	-2.0	87.95	0.4	76.72	2.6	55.39	-2.5	92.34	-0.4
	12	94.67	1.8	109.82	8.6	85.46	-2.8	71.65	-6.6	54.82	-1.0	89.66	-2.9
	Annual average	90.83		96.81		86.95		71.40		56.05		92.58	
2017:	1	97.03	2.5	113.37	3.2	90.76	6.2	74.56	4.1	51.36	-6.3	87.82	-2.1
	2	96.54	-0.5	105.95	-6.5	93.12	2.6	79.54	6.7	57.62	12.2	92.73	5.6
	3	96.23	-0.3	101.39	-4.3	95.87	2.9	76.63	-3.7	60.33	4.7	95.87	3.4
	4	92.73	-3.6	100.51	-0.9	90.19	-5.9	71.27	-7.0	55.00	-8.8	91.29	-4.8
	5	94.03	1.4	99.98	-0.5	92.89	3.0	75.08	5.3	60.42	9.9	93.03	1.9
	6	93.27	-0.8	99.30	-0.7	91.85	-1.1	74.67	-0.5	57.38	-5.0	92.51	-0.6
	7	93.83	0.6	97.98	-1.3	92.79	1.0	80.11	7.3	55.71	-2.9	94.40	2.0
	8	96.05	2.4	101.07	3.2	99.82	7.6	73.18	-8.6	53.61	-3.8	93.16	-1.3
	9	93.67	-2.5	99.65	-1.4	92.86	-7.0	72.21	-1.3	55.48	3.5	93.17	0.01
	10	94.98	1.4	102.12	2.5	92.57	-0.3	74.42	3.1	56.94	2.6	94.13	1.0
	11	94.97	-0.01	105.25	3.1	90.80	-1.9	73.11	-1.8	55.96	-1.7	91.74	-2.5
	12	96.48	1.6	102.89	-2.2	92.35	1.7	74.33	1.7	65.40	16.9	98.20	7.0
	Annual average	94.98		102.45		92.99		74.93		57.10		93.17	
2018:	1	96.53	0.1	102.46	-0.4	95.71	3.6	77.12	3.8	60.56	-7.4	95.51	-2.7
	2	94.63	-2.0	101.73	-0.7	89.72	-6.3	73.73	-4.4	60.19	-0.6	96.05	0.6

Notes:

1. The indices are rounded up to two decimal figures when published and percentage changes up to one decimal figure when published.
2. The whole time-series with seasonally adjusted indices is recalculated every time a new observation is added in the time-series.

METHODOLOGICAL NOTES

Generally	The Industrial Production Index (IPI) is compiled since 1959.
Purpose of the index	The IPI is an important business cycle indicator, which shows the monthly activity in the Mining and Quarrying, Manufacturing, Electricity and Water Supply divisions. More specifically, the objective of the Industrial Production Index is to compare the magnitude (volume) of the output in the current month with the corresponding output in any given period which is considered as base period. The IPI shows the evolution of the value added of the production factors cost, at constant prices.
Legal basis	The compilation of the IPI is governed by Council Regulation (EC) No 1165/98 concerning short-term statistics. Furthermore, the IPI is governed by Regulation (EC) No 1893/2006 of the European Parliament and of the Council, by Commission Regulation (EC) No 656/2007 and by Council Regulation (EC) No 451/2008.
Reference period	Month.
Base year	2010=100.0.
Revision	The IPI is a fixed base index. Pursuant to the provisions of Council Regulation No 1165/98 concerning short-term statistics, the index is updated every five (5) years, in years ending in 0 or 5.
Statistical classifications	At the level of branches of economic activities, the classification NACE Rev.2 of Eurostat was used (Regulation No 1893/2006), while at the level of main industrial groups, the allocation of two-digit and three-digit NACE Rev. 2 headings to categories of aggregate classification was used, in accordance with Council Regulation No 656/2007. At product level, the classification CPA 2008 of Eurostat was used, according to Council Regulation No 451/2008.
Geographical coverage	The Index covers the whole Country.
Coverage of economic activities	The index covers all the sections of industry, the main industrial groups, all levels of economic activities (divisions, groups, and classes) and the level of products.
Statistical survey	The data are collected from a sample of 1.338 enterprises. The survey covers 354 products and the measurement of the surveyed products is made in terms of output quantities or in terms of production value or turnover, according to the specific situation in each branch of economic activity.
Seasonal adjustment	Seasonal adjustment is the procedure followed to remove the impact of seasonality on the time-series (i.e. the impact of monthly effects, e.g. holidays, tourist period etc), in order to improve comparability over time. The method used is the TRAMO-SEATS method with the use of JDemetra+ 2.0.0. For the seasonal adjustment of the Industrial Production Index at 2-digit level of NACE Rev.2, at section level (B – Mining and Quarrying, C – Manufacturing, D – Electricity and E – Water Supply) and for the Main Industrial Groupings (MIGs), the direct approach is applied, namely each time-series is seasonally adjusted independently. For the overall Industrial Production Index, the indirect approach is applied, with the seasonally adjusted IPI being computed by aggregating the seasonally adjusted MIGs using appropriate weights.
Publication of data	The IPI with the new base year (2010) is released since August 2014, with June 2014 as the first reference month. Data with base year 2010=100.0 are available from January 2000 onwards.
References	More information about the methodology concerning the compilation and calculation of the index and for the time series is available on the website of the Hellenic Statistical Authority (ELSTAT) (http://www.statistics.gr/en/statistics/-/publication/DKT21/).