



**HELLENIC REPUBLIC  
HELLENIC STATISTICAL AUTHORITY**

Piraeus, 21 October 2021

## **PRESS RELEASE**

### **BUSINESS DEMOGRAPHY, 2019 (Provisional data)**

The Hellenic Statistical Authority (ELSTAT) is launching, with the present Press Release, the publication of official statistics on business demography in Greece on a yearly basis, and specifically on active enterprises, births of enterprises, deaths of enterprises and high growth enterprises.

Business demography statistics provide highly policy-relevant information on the contribution of newly born enterprises and of high-growth enterprises to the economy, as well as on the impact of enterprise deaths. For each business demographic event, employment variables are available in order to quantify its importance and depict its impact in the context of the labour market.

More specifically, ELSTAT announces for the reference year 2019 provisional data on:

- The number and total employment of active enterprises, enterprise births and enterprise deaths, by section of economic activity of the Statistical Classification of Economic Activities (NACE Rev. 2) and by employees' size class or by category of Legal Form of enterprise.
- The number and total employment of high growth enterprises, by section of economic activity of the Statistical Classification of Economic Activities (NACE Rev. 2).

**Information on methodological issues:**

*Business Statistics Division  
Registers and Big Enterprises Section  
Head of Section: Adamantia Georgostathi  
Tel.: +30 213 135 2043  
E-mail: [a.georgostathi@statistics.gr](mailto:a.georgostathi@statistics.gr)*

**Information on data provision:**

*Tel.: +30 213 135 2022, 2308, 2310  
E-mail: [data.dissem@statistics.gr](mailto:data.dissem@statistics.gr)*

## **Number and total employment of Active Enterprises, Births of Enterprises and Deaths of Enterprises, for the year 2019 (Tables 1, 2 and 3)**

The number of active enterprises amounted to 984,001 with total employment 4,116,903 persons. Out of the 984,001 active enterprises, 737,852 were sole proprietorships, while 523,685 had no employees.

The number of enterprise births amounted to 47,418 with total employment 114,641 persons. Out of the 47,418 born enterprises, 34,122 were sole proprietorships, while 30,236 had no employees.

The number of enterprise deaths amounted to 29,238 with total employment 52,614 persons. Out of the 29,238 dead enterprises, 26,173 were sole proprietorships, while 20,294 had no employees.

### **1. ACTIVE ENTERPRISES**

#### **1.1. Sections of Economic Activity by Employees' Size Class of the enterprise (Table 1)**

The sections of economic activity with the biggest number of active enterprises by Employees' Size Class are:

- **No Employee:** Wholesale and Retail Trade; Repair of Motor Vehicles and Motorcycles, with 125,042 active enterprises.
- **1-4 Employees:** Wholesale and Retail Trade; Repair of Motor Vehicles and Motorcycles, with 109,641 active enterprises.
- **5-9 Employees:** Accommodation and Food Service Activities, with 14,692 active enterprises.
- **10 Employees or more:** Accommodation and Food Service Activities, with 15,605 active enterprises.

#### **1.2. Sections of Economic Activity by category of Legal Form of the enterprise (Tables 3 and 4)**

The sections of economic activity with the biggest number of active enterprises by category of Legal Form are:

- **Sole Proprietorships:** Wholesale and Retail Trade; Repair of Motor Vehicles and Motorcycles, with 188,145 active enterprises and 331,969 persons employed.
- **Limited Liability Enterprises:** Wholesale and Retail Trade; Repair of Motor Vehicles and Motorcycles, with 23,874 active enterprises and 339,359 persons employed.
- **Partnership Enterprises:** Wholesale and Retail Trade; Repair of Motor Vehicles and Motorcycles, with 44,257 active enterprises and 209,264 persons employed.

## 2. BIRTHS OF ENTERPRISES

### 2.1. Sections of Economic Activity by Employees' Size Class of the enterprise (Table 1)

The sections of economic activity with the biggest number of enterprise births by Employees' Size Class are:

- **No Employees:** Professional, Scientific and Technical Activities, with 7,103 enterprise births.
- **1-4 Employees:** Wholesale and Retail Trade; Repair of Motor Vehicles and Motorcycles, with 3,623 enterprise births.
- **5-9 Employees:** Accommodation and Food Service Activities, with 1,024 enterprise births.
- **10 Employees or more:** Accommodation and Food Service Activities, with 782 enterprise births.

### 2.2. Sections of Economic Activity by category of Legal Form of the enterprise (Tables 3 and 4)

The sections of economic activity with the biggest number of enterprise births by category of Legal Form are:

- **Sole Proprietorships:** Wholesale and Retail Trade; Repair of Motor Vehicles and Motorcycles, with 7,285 enterprise births and 9,985 persons employed.
- **Limited Liability Enterprises:** Wholesale and Retail Trade; Repair of Motor Vehicles and Motorcycles, with 1,572 enterprise births and 3,652 persons employed.
- **Partnership Enterprises:** Wholesale and Retail Trade; Repair of Motor Vehicles and Motorcycles, with 1,665 enterprise births and 5,365 persons employed.

## 3. DEATHS OF ENTERPRISES

### 3.1. Sections of Economic Activity by Employees' Size Class of the enterprise (Table 1)

The sections of economic activity with the biggest number of enterprise deaths by Employees' Size Class are:

- **No Employees:** Wholesale and Retail Trade; Repair of Motor Vehicles and Motorcycles, with 5,686 enterprise deaths.
- **1-4 Employees:** Wholesale and Retail Trade; Repair of Motor Vehicles and Motorcycles, with 2,567 enterprise deaths.
- **5-9 Employees:** Accommodation and Food Service Activities, with 320 enterprise deaths.
- **10 Employees or more:** Accommodation and Food Service Activities, with 185 enterprise deaths.

### 3.2. Sections of Economic Activity by category of Legal Form of the enterprise (Tables 3 and 4)

The sections of economic activity with the biggest number of enterprise deaths by category of Legal Form are:

- **Sole Proprietorships:** Wholesale and Retail Trade; Repair of Motor Vehicles and Motorcycles, with 7,286 enterprise deaths and 9,774 persons employed.
- **Limited Liability Enterprises:** Wholesale and Retail Trade; Repair of Motor Vehicles and Motorcycles, with 122 enterprise deaths and 235 persons employed.
- **Partnership Enterprises:** Wholesale and Retail Trade; Repair of Motor Vehicles and Motorcycles, with 939 enterprise deaths and 2,419 persons employed.

#### **4. NUMBER OF HIGH GROWTH ENTERPRISES MEASURED IN EMPLOYMENT (Table 5)**

According to the applied statistical definition, high growth enterprises for 2019 are those that had at least 10 employees in 2016, and an average annualized growth in the number of employees bigger than 10 % per annum, during the three-year period 2016 - 2019.

The number of high growth enterprises in 2019 amounted to 7,300, with 473,230 persons employed.

The economic activity section "Accommodation and Food Service Activities" recorded the biggest number of high growth enterprises, with 2,785 enterprises and 134,664 persons employed, followed by "Wholesale and Retail Trade; Repair of Motor Vehicles and Motorcycles", with 1,476 enterprises and 92,423 persons employed, and "Manufacturing", with 1,121 enterprises and 65,067 persons employed. The smallest number of high growth enterprises was recorded in "Electricity, Gas, Steam and Air Conditioning Supply", with 13 enterprises and 565 persons employed.

**Table 1:** Number of Active enterprises, Births of enterprises and Deaths of enterprises, by economic activity (NACE Rev.2) and employees' size class of enterprise, 2019 (provisional data)

ECONOMIC ACTIVITY	EMPLOYEES' SIZE CLASS														
	Number of Active enterprises					Number of Births of enterprises					Number of Deaths of enterprises				
	0	1-4	5-9	≥10	Total	0	1-4	5-9	≥10	Total	0	1-4	5-9	≥10	Total
<b>B:</b> Mining and Quarrying	254	291	63	114	<b>722</b>	x	x	0	0	<b>6</b>	x	x	0	x	<b>x</b>
<b>C:</b> Manufacturing	27,554	26,538	4,917	6,215	<b>65,224</b>	1,360	673	76	51	<b>2,160</b>	1,021	529	x	x	<b>1,592</b>
<b>D:</b> Electricity, Gas, Steam and Air Conditioning Supply	4,862	2,346	115	95	<b>7,418</b>	103	91	x	x	<b>199</b>	x	x	0	x	<b>x</b>
<b>E:</b> Water Supply, Sewerage, Waste Management and Remediation Activities	854	912	172	316	<b>2,254</b>	x	x	x	x	<b>79</b>	39	x	0	x	<b>50</b>
<b>F:</b> Construction	44,142	24,368	3,047	2,292	<b>73,849</b>	2,116	901	x	x	<b>3,267</b>	1,025	x	x	x	<b>1,319</b>
<b>G:</b> Wholesale and Retail Trade; Repair of Motor Vehicles and Motorcycles	125,042	109,641	12,402	9,191	<b>256,276</b>	6,561	3,623	229	109	<b>10,522</b>	5,686	2,567	76	18	<b>8,347</b>
<b>H:</b> Transportation and Storage	38,602	23,197	2,088	2,114	<b>66,001</b>	1,642	690	57	31	<b>2,420</b>	1,335	451	11	9	<b>1,806</b>
<b>I:</b> Accommodation and Food Service Activities	44,990	49,424	14,692	15,605	<b>124,711</b>	2,077	3,443	1024	782	<b>7,326</b>	2,608	2,179	320	185	<b>5,292</b>
<b>J:</b> Information and Communication	11,747	6,392	919	1,142	<b>20,200</b>	1,202	259	24	16	<b>1,501</b>	607	115	x	x	<b>729</b>
<b>K:</b> Financial and Insurance Activities	12,983	4,890	434	409	<b>18,716</b>	729	129	x	x	<b>864</b>	465	74	x	x	<b>546</b>
<b>L:</b> Real Estate Activities	6,098	6,268	443	360	<b>13,169</b>	574	351	x	x	<b>946</b>	81	38	0	0	<b>119</b>
<b>M:</b> Professional, Scientific and Technical Activities	114,253	33,988	2,528	1,978	<b>152,747</b>	7,103	935	50	28	<b>8,116</b>	3,662	519	7	11	<b>4,199</b>
<b>N:</b> Administrative and Support Service Activities	11,870	9,691	1,490	1,862	<b>24,913</b>	1,271	570	41	37	<b>1,919</b>	587	189	x	x	<b>792</b>
<b>P:</b> Education	10,018	8,812	2,898	3,916	<b>25,644</b>	986	300	97	93	<b>1,476</b>	612	x	54	x	<b>900</b>
<b>Q:</b> Human Health and Social Work Activities	39,272	17,650	1,974	2,088	<b>60,984</b>	2,356	374	x	x	<b>2,800</b>	1,452	x	x	x	<b>1,714</b>
<b>R:</b> Arts, Entertainment and Recreation	11,145	11,183	1,512	1,305	<b>25,145</b>	782	599	58	47	<b>1,486</b>	449	288	x	x	<b>756</b>
<b>S:</b> Other Service Activities	19,999	22,676	1,947	1,406	<b>46,028</b>	1,323	944	x	x	<b>2,331</b>	641	377	x	x	<b>1,036</b>
<b>Total</b>	<b>523,685</b>	<b>358,267</b>	<b>51,641</b>	<b>50,408</b>	<b>984,001</b>	<b>30,236</b>	<b>13,912</b>	<b>1,950</b>	<b>1,320</b>	<b>47,418</b>	<b>20,294</b>	<b>8,062</b>	<b>568</b>	<b>314</b>	<b>29,238</b>

*Notes: In Section K: Financial and insurance activities, the activities of holding companies are excluded (NACE Rev.2 64.2)*

*"x": The data are not disclosed for statistical confidentiality reasons regarding the protection of the identity of the reporting enterprises.*

**Table 2:** Total employment of Active enterprises, Births of enterprises and Deaths of enterprises, by economic activity (NACE Rev.2) and employees' size class of enterprise, 2019 (provisional data)

ECONOMIC ACTIVITY	EMPLOYEES' SIZE CLASS														
	Total persons employed in the population of														
	Active enterprises					Births of enterprises					Deaths of enterprises				
	0	1-4	5-9	≥10	Total	0	1-4	5-9	≥10	Total	0	1-4	5-9	≥10	Total
<b>B:</b> Mining and Quarrying	304	727	461	6,871	<b>8,363</b>	x	x	0	0	<b>16</b>	x	x	0	x	<b>x</b>
<b>C:</b> Manufacturing	30,101	69,161	36,618	280,406	<b>416,286</b>	1,473	1,539	564	1,205	<b>4,781</b>	1,091	1,232	x	x	<b>2,758</b>
<b>D:</b> Electricity, Gas, Steam and Air Conditioning Supply	7,102	4,823	795	28,382	<b>41,102</b>	114	147	x	x	<b>312</b>	x	x	0	x	<b>x</b>
<b>E:</b> Water Supply, Sewerage, Waste Management and Remediation Activities	914	1,920	1,224	16,469	<b>20,527</b>	x	x	x	x	<b>151</b>	39	x	0	x	<b>94</b>
<b>F:</b> Construction	47,429	58,082	22,073	71,691	<b>199,275</b>	2,226	2,002	x	x	<b>6,595</b>	1,086	x	x	x	<b>1,893</b>
<b>G:</b> Wholesale and Retail Trade; Repair of Motor Vehicles and Motorcycles	134,580	273,041	91,405	381,566	<b>880,592</b>	7,214	7,785	1,685	2,318	<b>19,002</b>	6,116	5,467	547	298	<b>12,428</b>
<b>H:</b> Transportation and Storage	39,046	49,080	14,810	107,640	<b>210,576</b>	1,705	1,326	406	1,314	<b>4,751</b>	1,345	788	83	173	<b>2,389</b>
<b>I:</b> Accommodation and Food Service Activities	46,333	134,009	112,407	436,590	<b>729,339</b>	2,194	9,663	7,866	18,007	<b>37,730</b>	2,706	5,617	2,442	3,504	<b>14,269</b>
<b>J:</b> Information and Communication	12,464	13,902	6,444	75,431	<b>108,241</b>	1,275	435	177	333	<b>2,220</b>	636	230	x	x	<b>1,150</b>
<b>K:</b> Financial and Insurance Activities	13,349	11,000	2,948	63,994	<b>91,291</b>	761	236	x	x	<b>1,285</b>	469	151	x	x	<b>683</b>
<b>L:</b> Real Estate Activities	6,784	10,087	2,975	12,885	<b>32,731</b>	656	507	x	x	<b>1,453</b>	92	75	0	0	<b>167</b>
<b>M:</b> Professional, Scientific and Technical Activities	116,083	74,884	17,902	119,216	<b>328,085</b>	7,288	1,765	339	841	<b>10,233</b>	3,703	1,041	45	2,267	<b>7,056</b>
<b>N:</b> Administrative and Support Service Activities	12,532	22,923	10,905	131,080	<b>177,440</b>	1,350	1,116	275	2,583	<b>5,324</b>	612	402	x	x	<b>1,209</b>
<b>P:</b> Education	10,300	22,838	21,938	305,463	<b>360,539</b>	1,018	828	709	2,296	<b>4,851</b>	623	x	393	x	<b>2,795</b>
<b>Q:</b> Human Health and Social Work Activities	39,577	43,875	14,540	184,954	<b>282,946</b>	2,396	893	x	x	<b>7,607</b>	1,463	x	x	x	<b>2,175</b>
<b>R:</b> Arts, Entertainment and Recreation	11,623	25,255	10,731	43,215	<b>90,824</b>	825	1,282	401	1,330	<b>3,838</b>	481	686	x	x	<b>1,550</b>
<b>S:</b> Other Service Activities	20,603	47,962	13,795	56,386	<b>138,746</b>	1,404	2,057	x	x	<b>4,492</b>	662	843	x	x	<b>1,684</b>
<b>Total</b>	<b>594,124</b>	<b>863,569</b>	<b>381,971</b>	<b>2,322,239</b>	<b>4,116,903</b>	<b>31,957</b>	<b>31,641</b>	<b>14,396</b>	<b>36,647</b>	<b>114,641</b>	<b>21,152</b>	<b>18,306</b>	<b>4,204</b>	<b>8,952</b>	<b>52,614</b>

*Notes: In Section K: Financial and insurance activities, the activities of holding companies are excluded (NACE Rev.2 64.2)*

*"x": The data are not disclosed for statistical confidentiality reasons regarding the protection of the identity of the reporting enterprises*

**Table 3:** Number of Active enterprises, Births of enterprises and Deaths of enterprises, by economic activity (NACE Rev.2) and category of legal form of enterprise, 2019 (provisional data)

NACE Rev.2 Code	ECONOMIC ACTIVITY Description	LEGAL FORM											
		Number of Active enterprises				Number of Births of enterprises				Number of Deaths of enterprises			
		Sole Proprietorship	Limited Liability	Partnership	Total	Sole Proprietorship	Limited Liability	Partnership	Total	Sole Proprietorship	Limited Liability	Partnership	Total
<b>B</b>	Mining and Quarrying	232	274	216	<b>722</b>	x	x	x	<b>6</b>	x	x	x	<b>6</b>
<b>C</b>	Manufacturing	41,409	9,794	14,021	<b>65,224</b>	1,512	326	322	<b>2,160</b>	1,364	24	204	<b>1,592</b>
<b>D</b>	Electricity, Gas, Steam and Air Conditioning Supply	1,787	2,096	3,535	<b>7,418</b>	x	94	x	<b>199</b>	x	x	10	<b>35</b>
<b>E</b>	Water Supply, Sewerage, Waste Management and Remediation Activities	1,079	717	458	<b>2,254</b>	40	x	x	<b>79</b>	42	x	x	<b>50</b>
<b>F</b>	Construction	55,486	5,971	12,392	<b>73,849</b>	x	x	548	<b>3,267</b>	1,092	19	208	<b>1,319</b>
<b>G</b>	Wholesale and Retail Trade; Repair of Motor Vehicles and Motorcycles	188,145	23,874	44,257	<b>256,276</b>	7,285	1,572	1,665	<b>10,522</b>	7,286	122	939	<b>8,347</b>
<b>H</b>	Transportation and Storage	53,373	5,922	6,706	<b>66,001</b>	1,806	365	249	<b>2,420</b>	1,641	38	127	<b>1,806</b>
<b>I</b>	Accommodation and Food Service Activities	96,718	10,636	17,357	<b>124,711</b>	4,933	972	1,421	<b>7,326</b>	4,698	48	546	<b>5,292</b>
<b>J</b>	Information and Communication	12,449	4,618	3,133	<b>20,200</b>	987	374	140	<b>1,501</b>	639	30	60	<b>729</b>
<b>K</b>	Financial and Insurance Activities	15,191	2,045	1,480	<b>18,716</b>	641	161	62	<b>864</b>	528	x	x	<b>546</b>
<b>L</b>	Real Estate Activities	3,373	4,695	5,101	<b>13,169</b>	267	403	276	<b>946</b>	86	x	x	<b>119</b>
<b>M</b>	Professional, Scientific and Technical Activities	135,364	8,896	8,487	<b>152,747</b>	6,748	835	533	<b>8,116</b>	4,000	69	130	<b>4,199</b>
<b>N</b>	Administrative and Support Service Activities	15,480	4,120	5,313	<b>24,913</b>	1,190	383	346	<b>1,919</b>	712	15	65	<b>792</b>
<b>P</b>	Education	17,479	4,651	3,514	<b>25,644</b>	x	x	151	<b>1,476</b>	812	x	x	<b>900</b>
<b>Q</b>	Human Health and Social Work Activities	55,107	3,129	2,748	<b>60,984</b>	2,455	193	152	<b>2,800</b>	1,661	x	x	<b>1,714</b>
<b>R</b>	Arts, Entertainment and Recreation	15,661	2,987	6,497	<b>25,145</b>	x	x	262	<b>1,486</b>	660	18	78	<b>756</b>
<b>S</b>	Other Service Activities	29,519	5,329	11,180	<b>46,028</b>	1,815	175	341	<b>2,331</b>	930	23	83	<b>1,036</b>
<b>Total</b>		<b>737,852</b>	<b>99,754</b>	<b>146,395</b>	<b>984,001</b>	<b>34,122</b>	<b>6,740</b>	<b>6,556</b>	<b>47,418</b>	<b>26,173</b>	<b>449</b>	<b>2,616</b>	<b>29,238</b>

*Notes: In Section K: Financial and insurance activities, the activities of holding companies are excluded (NACE Rev.2 64.2)*

*"x": The data are not disclosed for statistical confidentiality reasons regarding the protection of the identity of the reporting enterprises.*

**Table 4:** Total Employment of Active enterprises, Births of enterprises and Deaths of enterprises, by economic activity (NACE Rev.2) and by category of legal form of the enterprise, 2019 (provisional data)

NACE Rev.2 Code	ECONOMIC ACTIVITY Description	LEGAL FORM											
		Active Enterprises				Births of Enterprises				Deaths of Enterprises			
		Sole Proprietorship	Limited Liability	Partnership	Total	Sole Proprietorship	Limited Liability	Partnership	Total	Sole Proprietorship	Limited Liability	Partnership	Total
<b>B</b>	Mining and Quarrying	405	6,855	1,103	<b>8,363</b>	x	x	x	<b>16</b>	x	x	x	<b>248</b>
<b>C</b>	Manufacturing	85,952	245,190	85,144	<b>416,286</b>	2,349	1,267	1,165	<b>4,781</b>	2,071	47	640	<b>2,758</b>
<b>D</b>	Electricity, Gas, Steam and Air Conditioning Supply	2,809	30,545	7,748	<b>41,102</b>	x	144	x	<b>312</b>	x	x	17	<b>66</b>
<b>E</b>	Water Supply, Sewerage, Waste Management and Remediation Activities	2,003	16,024	2,500	<b>20,527</b>	51	x	x	<b>151</b>	59	x	x	<b>94</b>
<b>F</b>	Construction	91,819	53,891	53,565	<b>199,275</b>	x	x	2,006	<b>6,595</b>	1,433	66	394	<b>1,893</b>
<b>G</b>	Wholesale and Retail Trade; Repair of Motor Vehicles and Motorcycles	331,969	339,359	209,264	<b>880,592</b>	9,985	3,652	5,365	<b>19,002</b>	9,774	235	2,419	<b>12,428</b>
<b>H</b>	Transportation and Storage	82,478	103,142	24,956	<b>210,576</b>	2,246	1,308	1,197	<b>4,751</b>	2,053	121	215	<b>2,389</b>
<b>I</b>	Accommodation and Food Service Activities	319,075	215,249	195,015	<b>729,339</b>	16,305	8,508	12,917	<b>37,730</b>	10,648	284	3,337	<b>14,269</b>
<b>J</b>	Information and Communication	16,812	75,279	16,150	<b>108,241</b>	1,046	811	363	<b>2,220</b>	787	227	136	<b>1,150</b>
<b>K</b>	Financial and Insurance Activities	20,247	63,283	7,761	<b>91,291</b>	705	446	134	<b>1,285</b>	605	x	x	<b>683</b>
<b>L</b>	Real Estate Activities	5,046	17,120	10,565	<b>32,731</b>	300	633	520	<b>1,453</b>	115	x	x	<b>167</b>
<b>M</b>	Professional, Scientific and Technical Activities	175,386	112,957	39,742	<b>328,085</b>	7,142	1,715	1,376	<b>10,233</b>	4,462	2,209	385	<b>7,056</b>
<b>N</b>	Administrative and Support Service Activities	36,051	106,500	34,889	<b>177,440</b>	1,622	2,431	1,271	<b>5,324</b>	963	21	225	<b>1,209</b>
<b>P</b>	Education	62,044	247,112	51,383	<b>360,539</b>	x	x	1,299	<b>4,851</b>	1,498	x	x	<b>2,795</b>
<b>Q</b>	Human Health and Social Work Activities	89,412	163,983	29,551	<b>282,946</b>	2,799	4,166	642	<b>7,607</b>	2,038	x	x	<b>2,175</b>
<b>R</b>	Arts, Entertainment and Recreation	31,578	30,104	29,142	<b>90,824</b>	x	x	1,367	<b>3,838</b>	1,052	111	387	<b>1,550</b>
<b>S</b>	Other Service Activities	56,115	42,738	39,893	<b>138,746</b>	2,828	764	900	<b>4,492</b>	1,411	35	238	<b>1,684</b>
<b>Total</b>		<b>1,409,201</b>	<b>1,869,331</b>	<b>838,371</b>	<b>4,116,903</b>	<b>54,641</b>	<b>29,312</b>	<b>30,688</b>	<b>114,641</b>	<b>38,998</b>	<b>4,318</b>	<b>9,298</b>	<b>52,614</b>

*Notes: In Section K: Financial and insurance activities, the activities of holding companies are excluded (NACE Rev.2 64.2)*

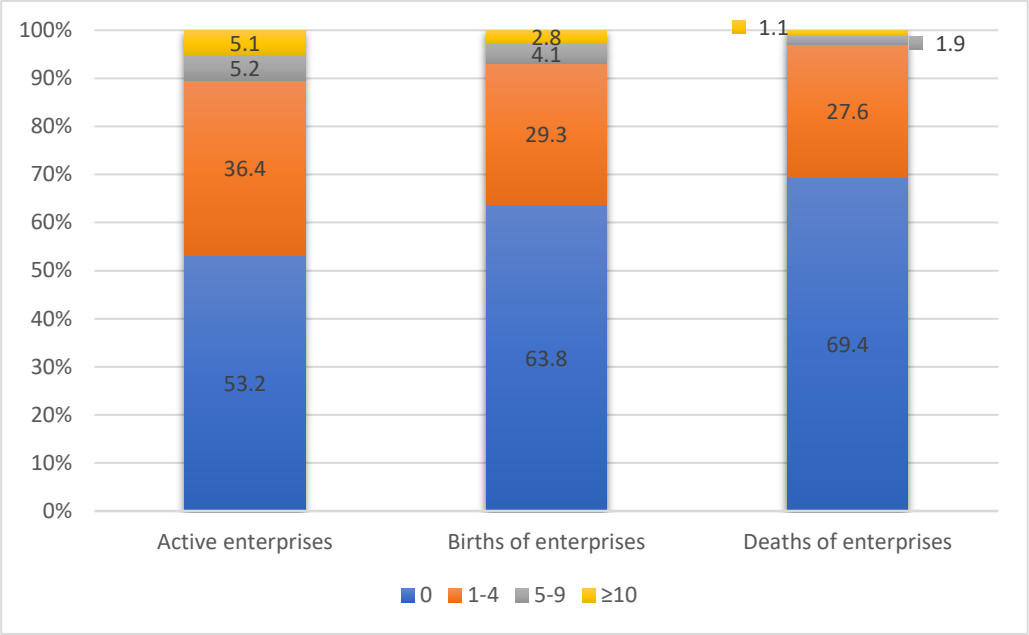
*"x": The data are not disclosed for statistical confidentiality reasons regarding the protection of the identity of the reporting enterprises*



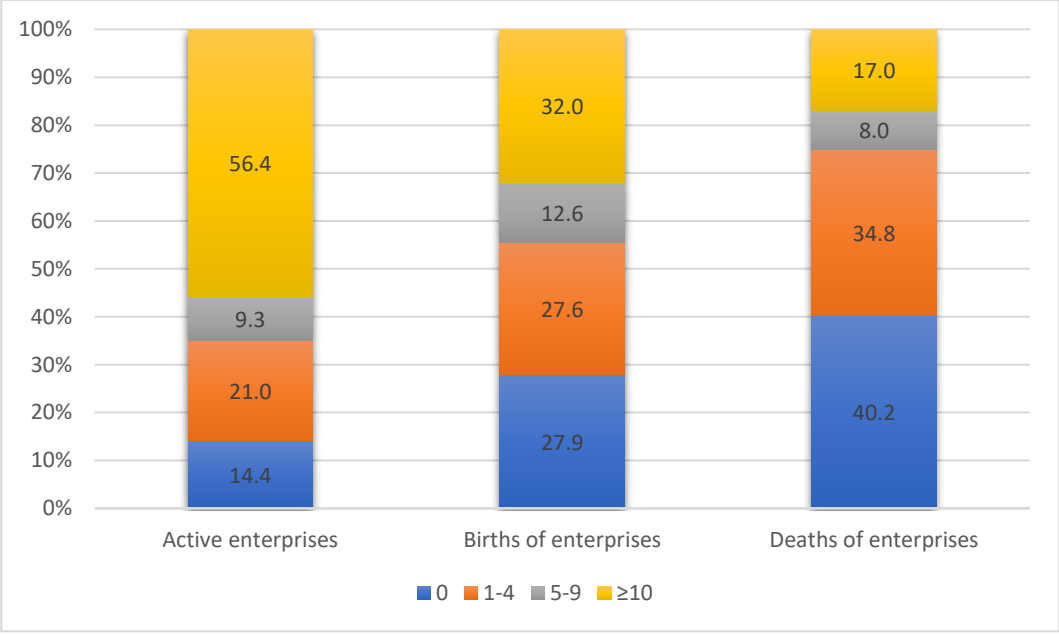
**Table 5:** Number of High Growth Enterprises measured in employment and number of employees by economic activity (NACE Rev.2) (provisional data)

NACE Rev. 2 Code	ECONOMIC ACTIVITY Description	High growth enterprises measured in employment	
		Number of enterprises	Number of employees
<b>B</b>	Mining and Quarrying	19	1,982
<b>C</b>	Manufacturing	1,121	65,067
<b>D</b>	Electricity, Gas, Steam and Air Conditioning Supply	13	565
<b>E</b>	Water Supply, Sewerage, Waste Management and Remediation Activities	75	3,993
<b>F</b>	Construction	317	16,007
<b>G</b>	Wholesale and Retail Trade; Repair of Motor Vehicles and Motorcycles	1,476	92,423
<b>H</b>	Transportation and Storage	380	22,506
<b>I</b>	Accommodation and Food Service Activities	2,785	134,664
<b>J</b>	Information and Communication	212	17,375
<b>K</b>	Financial and Insurance Activities	48	3,682
<b>L</b>	Real Estate Activities	65	5,173
<b>M</b>	Professional, Scientific and Technical Activities	392	48,689
<b>N</b>	Administrative and Support Service Activities	390	60,878
<b>S95</b>	Repair of computers and personal and household goods	7	226
<b>Total</b>		<b>7,300</b>	<b>473,230</b>

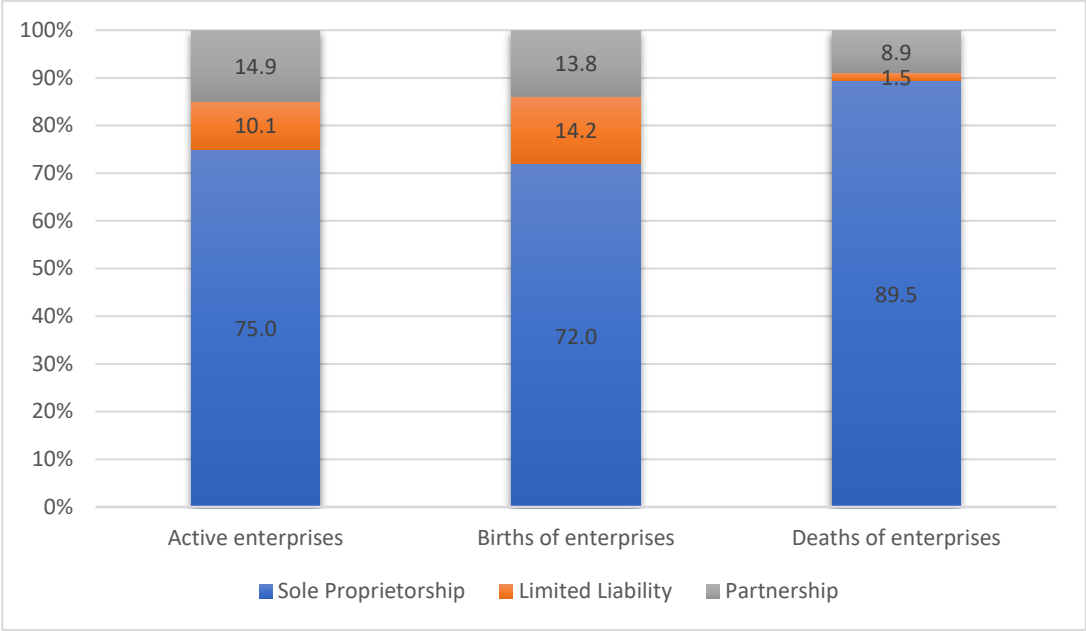
**Graph 1:** Percentage distribution (%) of the number of Active enterprises, Births of enterprises and Deaths of enterprises, by employees' size class, 2019 (provisional data)



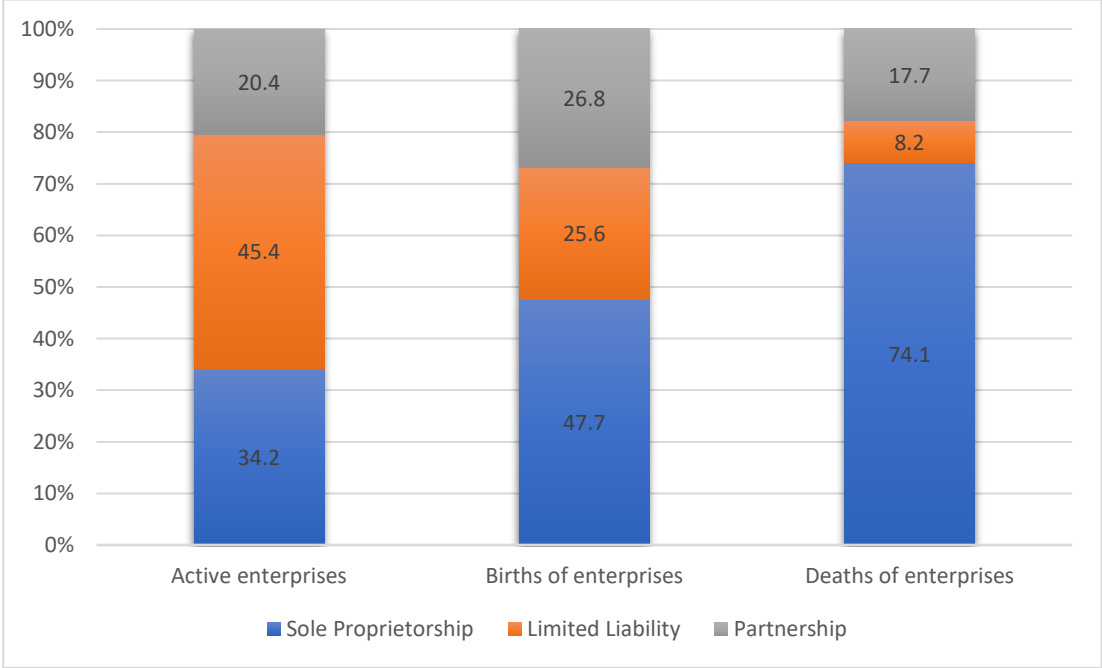
**Graph 2:** Percentage distribution (%) of the total employment of Active enterprises, Births of enterprises and Deaths of enterprises, by employees' size class, 2019



**Graph 3:** Percentage distribution (%) of the number of Active enterprises, Births of enterprises and Deaths of enterprises, by category of legal form of enterprise, 2019 (provisional data)



**Graph 4:** Percentage distribution (%) of the total employment of Active enterprises, Births of enterprises and Deaths of enterprises, by category of legal form of enterprise, 2019 (provisional data)



## METHODOLOGICAL NOTES

<b>General Information</b>	<p>The statistical data on business demography are compiled pursuant to the European Regulation concerning Structural Business Statistics (<a href="#">Regulation (EC) 295/2008 of the European Parliament and of the Council of 11 March 2008</a>) and the new European Regulation on Business Statistics, which entered into force on the 1<sup>st</sup> of January 2021 (<a href="#">Regulation (EU) 2019/2152 of the European Parliament and of the Council of 27 November 2019</a>) and refer to active enterprises, births of enterprises and deaths of enterprises, which are defined as follows:</p> <p><b>Active enterprises:</b> The number of enterprises that have turnover or employment at any time during the reference year.</p> <p><b>Births of enterprises:</b> An enterprise birth occurs when an enterprise (for example a company) starts from scratch and begins operations, amounting to the creation of a combination of production factors with the restriction that no other enterprises are involved in the event. Enterprises created solely as a result of e.g. restructuring, merger or break-up are not considered as enterprise births.</p> <p><b>Deaths of enterprises:</b> An enterprise death is the termination of an enterprise, amounting to the dissolution of a combination of production factors with the restriction that no other enterprises are involved in the event. Enterprises closed solely as a result of e.g. restructuring, merger or break-up are not considered as enterprise death.</p> <p>Moreover, business demography statistics include data for <b>high growth enterprises, measured in employment</b>. The enterprises having at least 10 employees in year t-3, with average annualized growth in number of employees greater than 10 % per annum, over a three-year period (t-3 to t) are characterized as high growth enterprises.</p> <p>The data are compiled by <b>economic activity of the enterprises</b> (<a href="#">NACE Rev.2</a>), <b>legal form</b> and <b>employees' size class</b> in order to reveal specific demographic patterns.</p> <p>The economic activities covered by business demography are NACE Rev.2 sections B to N, excluding group 64.2 "Management activities of holding companies" and P to S of NACE Rev. 2. The analysis for the high growth enterprises covers all NACE Sections B to N and P to R and division S95.</p> <p>The categories of legal form or enterprises are the following:</p> <ul style="list-style-type: none"> <li>• <b>Sole Proprietorships:</b> Personally owned enterprises with no limit to personal liability.</li> <li>• <b>Limited Liability Enterprises:</b> Private or publicly quoted joint stock companies with limited liability for those owning shares.</li> <li>• <b>Partnership Enterprises:</b> Personally owned limited and unlimited liability partnerships. Included are also other forms such as co-operatives, associations etc.</li> </ul> <p>The number of persons employed and the number of employees are defined as follows:</p> <p><b>Number of persons employed:</b> The total number of persons who work in the enterprise, including the working proprietors, partners and unpaid family members, as well as persons who work outside the enterprise, belong to it and are paid by it.</p> <p><b>Number of employees:</b> The number of persons who work for an employer, have a contract of employment and receive compensation in the form of wages, salaries, fees, gratuities, piecework pay or remuneration in kind.</p>
<b>Purpose</b>	The purpose of business demography statistics is to provide highly policy-relevant information on the contribution of newly born enterprises and of high growth enterprises to the economy, as well as on the impact of enterprise deaths.
<b>Legal framework</b>	Business demography statistics are compiled in accordance with <a href="#">Regulation (EC) 295/2008 of the European Parliament and of the Council of 11 March 2008</a> , concerning Structural Business Statistics, the implementing <a href="#">Regulation (EC) 251/2009 of 11 March 2009</a> , the Commission implementing <a href="#">Regulation (EU) 439/2014, of 29 April 2014</a> and of <a href="#">Regulation (EU) 2019/2152 of the European Parliament and of the Council of 27 November 2019</a> .
<b>Compilation methodology</b>	The compilation of statistical data for business demography is based on the analysis and processing of data obtained from the <a href="#">Statistical Business Register of ELSTAT</a> .
<b>Statistical classifications</b>	As regards the economic activities, the European statistical classification of economic activities <a href="#">NACE Rev.2</a> is used.
<b>Reference period</b>	Year 2019
<b>Statistical unit</b>	The statistical unit is the legal unit (distinct Tax Identification Numbers - TINs).
<b>References</b>	Analytical tables are available on ELSTAT's website ( <a href="http://www.statistics.gr">www.statistics.gr</a> ), at the following link: <a href="https://www.statistics.gr/en/statistics/-/publication/SBR05/-">https://www.statistics.gr/en/statistics/-/publication/SBR05/-</a> .