



HELLENIC REPUBLIC



HELLENIC STATISTICAL AUTHORITY

Piraeus, 19th of July 2011

PRESS RELEASE

Unemployment rate at 15.8% in April 2011

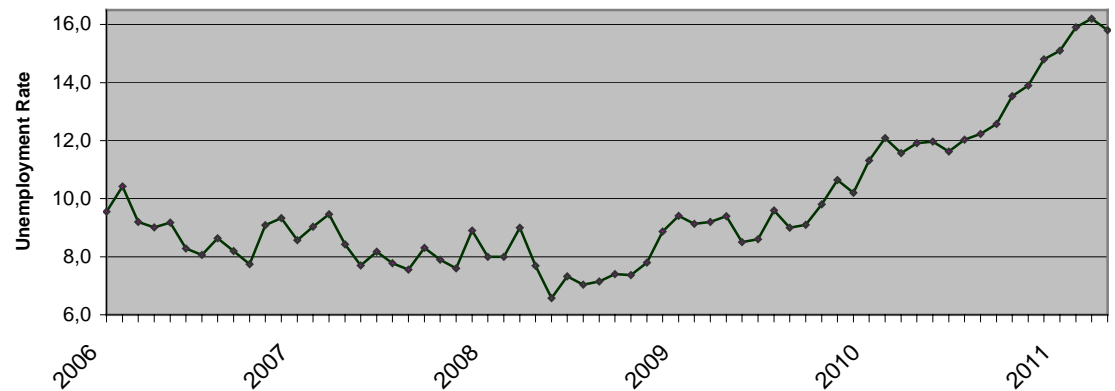
LABOUR FORCE SURVEY: April 2011

Unemployment rate in April 2011 was 15.8% compared to 11.9% in April 2010 and 16.2% in March 2011. The number of employed amounted to 4,183,332 persons while the number of unemployed amounted to 786,459 and the number of inactive to 4,365,072. The corresponding figures for April 2006 to 2011 are presented in Table 1.

The number of employed decreased by 240,567 persons compared with April 2010 (a 5.4% rate of decrease) and by 1,993 persons compared with March 2011 (a 0.05% rate of decrease).

Unemployed increased by 207,736 persons (a 35.9% rate of increase) compared with April 2010 and decreased by 24,881 persons compared with March 2011 (a 3.1% rate of decrease).

Unemployment rate by month (April 2006 – April 2011)



Tables 2, 3 and 4 illustrate unemployment rate by NUTS II regions, gender and age groups from April 2006 to 2011.

Contact Person: Stelios Zachariou
Tel: 213 1352173
Fax: 213 1352948
E-mail: LFS@statistics.gr

Table 1. Employed, unemployed, economically non-active and unemployment rate (April 2006-2011)

	April					
	2006	2007	2008	2009	2010	2011
Employed	4,419,463	4,512,386	4,572,840	4,482,264	4,412,946	4,183,332
Unemployed	437,539	415,047	380,775	466,878	596,979	786,459
Inactive	4,288,394	4,277,743	4,273,989	4,309,959	4,288,462	4,365,072
Unemployment rate	9.0	8.4	7.7	9.4	11.9	15.8

Table 2: Unemployment rate by region (NUTS II): April 2006-2011

Region	April					
	2006	2007	2008	2009	2010	2011
Anatoliki Makedonia Thraki (East Macedonia and Thrace)	11.7	7.2	7.5	8.3	11.1	19.6
Kentriki Makedonia (Central Macedonia)	10.8	9.5	8.4	9.7	12.1	17.5
Dytiki Makedonia (West Macedonia)	11.4	13.1	13.8	15.0	16.1	23.1
Ipeiros (Epirus)	8.6	12.3	9.7	11.9	12.5	17.0
Thessalia (Thessaly)	7.2	5.3	6.1	8.8	10.5	13.4
Ionioi Nisoi (Ionian Islands)	16.9	10.6	17.1	12.1	19.8	15.1
Dytiki Ellas (West Greece)	9.9	10.1	9.0	8.3	11.3	11.6
Stereia Ellas	10.4	13.2	10.5	11.1	11.4	20.2
Attiki (Attica)	7.9	7.3	6.1	8.0	11.6	15.7
Peloponnissos (Peloponnese)	7.8	9.6	8.0	8.8	9.8	11.2
Voreio Aigaio (North Aegean)	9.7	6.5	3.4	7.0	4.8	6.5
Notio Aigaio (South Aegean)	8.9	11.0	13.5	20.1	22.7	17.1
Kriti (Crete)	6.0	4.9	4.7	11.0	11.0	14.4
Total Country	9.0	8.4	7.7	9.4	11.9	15.8

Table 3. Unemployment rate by gender: April 2006-2011

Gender	April					
	2006	2007	2008	2009	2010	2011
Male	5.6	5.0	4.8	6.7	9.3	13.1
Female	13.9	13.3	11.8	13.3	15.5	19.6
Total	9.0	8.4	7.7	9.4	11.9	15.8

Table 4: Unemployment rate by age groups: April 2006-2011

Age Group	April					
	2006	2007	2008	2009	2010	2011
15-24 years old	24.2	21.2	20.4	25.2	30.8	43.1
25-34 years old	12.1	12.0	11.4	11.7	15.0	22.3
35-44 years old	6.8	7.0	5.8	7.9	10.4	12.7
45-54 years old	5.2	4.2	4.1	7.0	8.9	10.7
55-64 years old	3.8	4.2	3.6	4.7	5.6	7.2
65-74 years old	1.6	3.3	0.7	0.3	0.7	0.7
Total	9.0	8.4	7.7	9.4	11.9	15.8

EXPLANATORY NOTES

- Labour Force Survey** Labour Force Survey produces estimates since 1981 (second quarter of the year). From 1998 onwards it is a continuous quarterly survey. The main statistical objectives of the Labour Force Survey is to divide the population of working age (15 years and over) into three mutually exclusive and exhaustive groups - persons in employment, unemployed persons and inactive persons. In addition, the Labour Force Survey collects information on demographic characteristics, on main job characteristics, on the existence and characteristics of a second job, on educational attainment, on participation in education, on previous working experience and on search of job.
- Legislation** The current survey is completely harmonized with European legislation. The principal legal act is the Council Regulation (EC) No. 577/98 that stipulates the provisions on design, survey characteristics and decision-making processes. The survey framework was modified in successive Commission regulations. (Regulation (EC) No 1372/2007 , Regulation (EC) No 2257/2003 , Regulation (EC) No 1991/2002).
- Reference Period** The sample of Labour Force Survey is equally allocated to the 4 (or 5) weeks of the month. Every selected household is assigned to a specific week, the reference week, running from Monday to Sunday.
- For employment the reference period is the reference week.
 - For employment seeking the reference period is the reference week and the previous 3 weeks.
- Coverage** For the monthly estimates, a sub-sample of the quarterly Labour Force survey's sample was used.
- Definitions**
- Employed** are persons aged 15 years or older, who during the reference week worked, even for just one hour, for pay or profit or they were working in the family business, or they were not at work but had a job or business from which they were temporarily absent.
- Unemployed** are persons aged 15-74 who were without work during the reference week (they were not classified as employed), were currently available for work and were either actively seeking work in the past four weeks or had already found a job to start within the next three months.
- Inactive** are those persons who are neither classified as employed nor as unemployed.
- Economically active population (labour force)** are persons either employed or unemployed.
- Unemployment Rate** is the ratio of unemployed divided by total labour force.
- Methodology** Labour Force Survey' s estimates are produced by a suitable unbiased estimator which takes in to account a) the probability of selection of every sampled household, b) the response rate in every primary sampling unit, c) the estimated population for April 2011, allocated by NUTS II areas, gender and age group).
- References** Analytical description of the Labour Force Survey' s methodology and definitions can be found at www.statistics.gr.