



HELLENIC REPUBLIC



HELLENIC STATISTICAL AUTHORITY

Piraeus, 30 June 2010

PRESS RELEASE

The Cost Index for the Factors of Agricultural and Livestock Production decreased by 0.7% in 2009 compared with 2008.

COST INDEX FOR THE FACTORS OF AGRICULTURAL AND LIVESTOCK PRODUCTION : 2009

The Hellenic Statistical Authority announces the Annual Cost Index for the factors of agricultural and livestock production, with base year 2005=100.0.

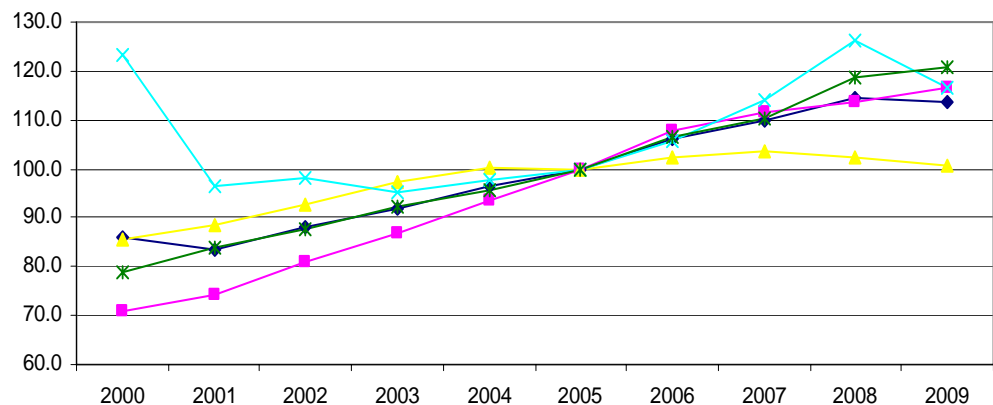
The change of the General Cost Index for the factors of agricultural and livestock production, for the year 2009, is presented as follows:

The General Index in 2009, compared with 2008, decreased by 0.7%. The previous year the index increased by 4.1%. (Table 2).

The Cost Index for the factors of agricultural and livestock production in 2009, compared with 2008, decreased by 0.7%, due to the changes of the main groups, as following:

- Labour remuneration index increased by 2.5%
- Land cost index (land rents), decreased by 1.5%
- Capital charges index decreased by 3.6%
 - a) Interest index decreased by 7.7%
 - b) Machinery rents Index increased by 1.9%.

Graph: Annual price index for the factors of agricultural production
Base year 2005=100.0



Information:

Economic and Short-Term
Indices Division

Wholesale Prices and Price
Indices Section

Adamantia Georgostathi
Tel: 0030 213 1352121
Fax: 0030 213 1352714

More information on the Cost Index for the factors of agricultural and livestock production are presented in the following tables.

Table 1. Annual Cost Index for the factors of agricultural and livestock production for the period: 2001 - 2009

Base Year: 2005=100.0

Groups	Weights	2001	2002	2003	2004	2005	2006	2007	2008	2009
Price Index for the factors of agricultural production	10,000	83.4	88.1	91.8	96.3	100.0	106.0	110.0	114.6	113.8
1. Labour remuneration (wages)	4,158	74.2	80.8	87.0	93.7	100.0	107.9	111.4	113.8	116.6
2. Land (rents)	2,190	88.3	92.7	97.5	100.3	100.0	102.4	103.6	102.3	100.7
3. Capital (wage of capital)	3,652	90.9	93.5	93.8	96.8	100.0	106.1	112.4	122.8	118.4
Loan's interest	2,033	96.6	98.1	95.2	97.7	100.0	105.6	114.1	126.3	116.5
Machinery rents	1,619	83.7	87.8	92.2	95.8	100.0	106.7	110.3	118.5	120.8

Table 2. Annual Percentage Changes of the Cost Index for the factors of agricultural and livestock production

Groups	2002/ 2001	2003/ 2002	2004/ 2003	2005/ 2004	2006/ 2005	2007/ 2006	2008/ 2007	2009/ 2008
Price Index for the factors of agricultural production	5.6	4.2	4.9	3.9	6.0	3.8	4.1	-0.7
1. Labour remuneration (wages)	8.9	7.6	7.8	6.7	7.9	3.2	2.2	2.5
2. Land (rents)	4.9	5.1	3.0	-0.3	2.4	1.1	-1.3	-1.5
3. Capital (wage of capital)	2.9	0.3	3.2	3.3	6.1	6.0	9.3	-3.6
Loan's interest	1.6	-3.0	2.6	2.4	5.6	8.0	10.7	-7.7
Machinery rents	4.9	5.0	3.9	4.4	6.7	3.4	7.5	1.9

Notes:

1. The indices are calculated with infinite decimal figures and are rounded up to one decimal figure when published.
2. Percentage changes are calculated on the basis of the indices with infinite decimal figures and are rounded up to one decimal figure when published.