



HELLENIC REPUBLIC



HELLENIC STATISTICAL AUTHORITY

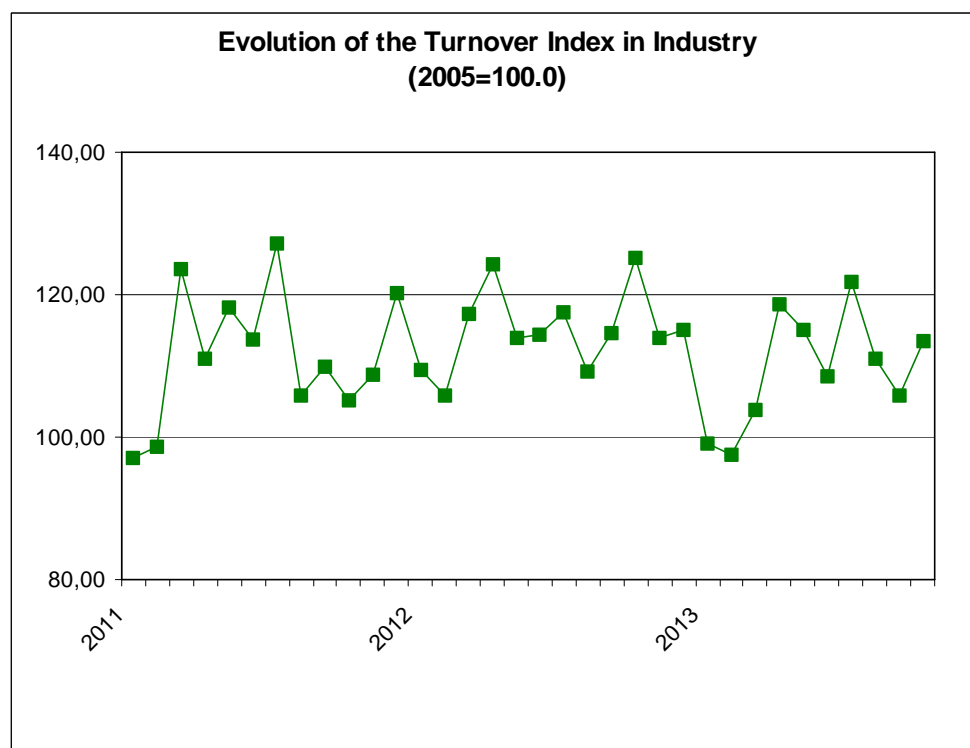
Piraeus, 20 December 2013

PRESS RELEASE

TURNOVER INDEX IN INDUSTRY: October 2013

The Turnover Index in Industry (both domestic and non-domestic market) in October 2013 compared with October 2012 recorded a decline of 9.3%. In October 2012, the annual rate of change of the Turnover Index in Industry was 18.9%.

The average Turnover Index in Industry for the 12-month period from November 2012 to October 2013, as compared to the 12-month period from November 2011 to October 2012, decreased by 4.2%. In October 2012, the corresponding average rate of change of the Turnover Index in Industry was 3.2%.



Information:

Economic and Short-Term
Indicators Division

Production Indices Section

Diamantaki Aikaterini
Karathanos Panagiotis
Tel: 0030 213 1352122
Fax: 0030 213 1352738

The decrease of the Turnover Index in Industry by 9.3% in October 2013, compared with October 2012, was due to the annual changes as following:

- by Industrial Sections

- Mining and quarrying turnover increased by 64.5%.
- Manufacturing turnover decreased by 10.1%.

In addition, the decrease of the Turnover Index in Industry by 9.3% in October 2013, compared with October 2012, was due to the annual changes of the indices of the markets as following:

- The Turnover Index in Industry for the domestic market decreased by 5.9%.
- The Turnover Index in Industry for the non-domestic market decreased by 14.2%.

The decrease of the Turnover Index in Industry for the non-domestic market by 14.2% in October 2013, compared with October 2012, was due to the annual changes as following:

- The Turnover Index in Industry for the Eurozone countries decreased by 3.1%.
- The Turnover Index in Industry for the non-Eurozone countries decreased by 17.7%.

Table 1: Annual rates of change of the Turnover Index in Industry (Total Market)

Base year: 2005=100.0

Branch code	Branch name	October			Rate of change (%)	
		2013*	2012	2011	2013/2012	2012/2011
	OVERALL INDEX	113.5	125.2	105.2	-9.3	18.9
B	MINING AND QUARRYING	136.8	83.2	111.7	64.5	-25.6
05	Mining of coal and lignite	205.5	99.7	95.5	106.1	4.4
06	Extraction of crude petroleum and natural gas	593.8	0.0	421.7	–	-100.0
07	Mining of metal ores	78.4	96.5	97.8	-18.8	-1.3
08	Other mining and quarrying products	111.7	85.5	93.5	30.6	-8.5
C	MANUFACTURING	111.3	123.8	103.4	-10.1	19.7
10	Food	105.4	108.5	102.9	-2.9	5.4
11	Beverages	61.2	69.8	61.7	-12.4	13.2
12	Tobacco products	77.9	80.1	80.6	-2.8	-0.6
13	Textiles	37.6	37.7	40.0	-0.2	-5.9
14	Wearing apparel	39.7	44.6	48.2	-11.1	-7.5
15	Leather and related products	37.4	35.8	60.9	4.6	-41.3
16	Wood and cork	26.6	39.8	44.2	-33.3	-9.9
17	Paper and paper products	104.6	110.4	107.6	-5.2	2.5
18	Printing and recording services	45.0	49.1	50.2	-8.4	-2.2
19	Coke and refined petroleum products	200.7	232.6	168.4	-13.7	38.1
20	Chemicals and chemical products	91.0	96.4	89.1	-5.6	8.2
21	Basic pharmaceutical products and pharmaceutical preparations	165.7	145.6	116.2	13.8	25.3
22	Rubber and plastic products	99.6	98.9	88.7	0.6	11.5
23	Other non-metallic mineral products	42.7	42.6	42.2	0.2	1.0
24	Basic metals	91.3	105.6	99.0	-13.6	6.7
25	Fabricated metal products	66.5	78.7	75.8	-15.6	3.8
26	Computers, electronic and optical products	39.4	30.9	25.5	27.4	21.4
27	Electrical equipment	74.4	94.8	79.9	-21.5	18.6
28	Machinery and equipment n.e.c.	64.0	75.9	60.9	-15.7	24.7
29	Motor vehicles, trailers and semi-trailers	45.6	36.6	56.1	24.6	-34.7
30	Other transport equipment	25.8	27.4	49.1	-5.7	-44.1
31	Furniture	39.2	45.9	55.6	-14.6	-17.5
32	Other manufactured goods	60.4	66.4	62.5	-8.9	6.1
33	Repair and installation services of machinery and equipment	45.2	48.6	54.9	-6.9	-11.5
	MAIN INDUSTRIAL GROUPINGS					
1	Energy	202.0	231.5	169.0	-12.8	37.0
2	Intermediate goods	84.8	91.2	84.5	-7.0	7.9
3	Capital goods	44.7	50.0	56.5	-10.5	-11.5
4	Consumer Durables	39.1	51.2	56.4	-23.6	-9.3
5	Consumer Non-Durables	84.6	87.0	82.5	-2.7	5.4

* Provisional data

Note:

1. The indices are calculated with infinite decimal figures and are rounded up to one decimal figure when published.
2. Percentage changes are calculated on the basis of indices with infinite decimal figures and are rounded up to one decimal figure when published.

Table 2: Annual rates of change of the Turnover Index in Industry for the Domestic Market

Base year: 2005=100.0

Branch code	Branch name	October			Rate of change (%)	
		2013*	2012	2011	2013/2012	2012/2011
	OVERALL INDEX	85.4	90.7	85.3	-5.9	6.3
B	MINING AND QUARRYING	121.5	61.6	90.4	97.3	-31.9
05	Mining of coal and lignite	205.5	99.7	95.5	106.1	4.4
06	Extraction of crude petroleum and natural gas	593.8	0.0	421.7	–	-100.0
07	Mining of metal ores	104.3	126.6	114.0	-17.6	11.0
08	Other mining and quarrying products	66.2	55.3	51.2	19.7	8.1
C	MANUFACTURING	83.7	89.8	84.0	-6.9	6.9
10	Food	100.2	105.4	100.7	-4.9	4.8
11	Beverages	58.8	65.9	59.7	-10.7	10.3
12	Tobacco products	48.1	51.0	53.4	-5.7	-4.6
13	Textiles	31.5	33.1	34.1	-4.9	-2.7
14	Wearing apparel	36.2	35.8	48.9	1.1	-26.7
15	Leather and related products	41.3	39.1	63.1	5.7	-38.1
16	Wood and cork	21.9	32.0	38.6	-31.5	-17.0
17	Paper and paper products	100.3	106.9	104.2	-6.1	2.5
18	Printing and recording services	41.2	46.6	48.6	-11.6	-4.1
19	Coke and refined petroleum products	143.7	150.1	130.3	-4.3	15.2
20	Chemicals and chemical products	59.6	66.6	66.4	-10.5	0.2
21	Basic pharmaceutical products and pharmaceutical preparations	104.9	94.9	83.3	10.5	13.9
22	Rubber and plastic products	68.6	79.0	71.0	-13.1	11.2
23	Other non-metallic mineral products	32.2	34.8	42.1	-7.4	-17.3
24	Basic metals	53.8	71.5	60.5	-24.7	18.2
25	Fabricated metal products	44.6	49.8	58.8	-10.5	-15.3
26	Computers, electronic and optical products	7.8	12.6	9.8	-38.1	28.4
27	Electrical equipment	42.0	61.1	61.0	-31.2	0.2
28	Machinery and equipment n.e.c.	33.7	35.7	41.1	-5.7	-13.0
29	Motor vehicles, trailers and semi-trailers	26.4	19.8	41.7	33.4	-52.6
30	Other transport equipment	2.6	4.4	10.6	-41.8	-58.2
31	Furniture	32.8	42.9	54.1	-23.5	-20.6
32	Other manufactured goods	39.6	44.9	46.3	-11.9	-2.8
33	Repair and installation services of machinery and equipment	45.2	48.6	54.9	-6.9	-11.5
	MAIN INDUSTRIAL GROUPINGS					
1	Energy	145.8	149.3	131.4	-2.4	13.7
2	Intermediate goods	61.0	69.4	65.5	-12.1	5.9
3	Capital goods	30.5	33.3	43.6	-8.5	-23.6
4	Consumer Durables	33.1	43.7	53.8	-24.4	-18.7
5	Consumer Non-Durables	74.4	78.2	76.6	-4.8	2.0

* Provisional data

Note:

1. The indices are calculated with infinite decimal figures and are rounded up to one decimal figure when published.
2. Percentage changes are calculated on the basis of indices with infinite decimal figures and are rounded up to one decimal figure when published.

Table 3: Annual rates of change of the Turnover Index in Industry for the Non - Domestic Market

Base year: 2005=100.0

Branch code	Branch name	October			Rate of change (%)	
		2013*	2012	2011	2013/2012	2012/2011
	OVERALL INDEX	198.1	230.8	164.3	-14.2	40.5
B	MINING AND QUARRYING	143.4	115.0	139.4	24.7	-17.5
05	Mining of coal and lignite	0.0	0.0	0.0	0.0	0.0
06	Extraction of crude petroleum and natural gas	0.0	0.0	0.0	0.0	0.0
07	Mining of metal ores	55.2	69.6	83.3	-20.6	-16.4
08	Other mining and quarrying products	167.9	127.6	155.0	31.6	-17.7
C	MANUFACTURING	194.9	228.3	161.2	-14.6	41.6
10	Food	128.4	120.5	113.3	6.5	6.3
11	Beverages	97.2	124.3	91.3	-21.7	36.1
12	Tobacco products	157.2	157.6	152.8	-0.3	3.2
13	Textiles	45.1	43.0	47.6	4.7	-9.6
14	Wearing apparel	43.5	53.5	48.6	-18.7	10.2
15	Leather and related products	2.9	6.2	42.0	-53.0	-85.2
16	Wood and cork	57.4	92.2	81.4	-37.8	13.3
17	Paper and paper products	139.9	138.3	136.1	1.2	1.6
18	Printing and recording services	396.0	279.3	198.0	41.8	41.0
19	Coke and refined petroleum products	385.7	500.3	292.1	-22.9	71.3
20	Chemicals and chemical products	163.5	165.6	141.2	-1.3	17.3
21	Basic pharmaceutical products and pharmaceutical preparations	470.4	399.7	281.3	17.7	42.1
22	Rubber and plastic products	160.4	139.1	124.5	15.3	11.8
23	Other non-metallic mineral products	111.9	96.0	40.8	16.6	135.0
24	Basic metals	129.3	140.5	138.1	-7.9	1.8
25	Fabricated metal products	151.2	186.9	138.3	-19.1	35.2
26	Computers, electronic and optical products	58.5	42.5	34.3	37.6	24.0
27	Electrical equipment	110.8	132.5	100.6	-16.4	31.8
28	Machinery and equipment n.e.c.	100.2	124.7	84.4	-19.6	47.7
29	Motor vehicles, trailers and semi-trailers	153.4	125.5	120.9	22.2	3.8
30	Other transport equipment	38.0	38.7	78.0	-2.0	-50.4
31	Furniture	226.3	139.9	98.5	61.8	42.0
32	Other manufactured goods	130.6	146.1	131.0	-10.6	11.5
33	Repair and installation services of machinery and equipment	0.0	0.0	0.0	0.0	0.0
	MAIN INDUSTRIAL GROUPINGS					
1	Energy	385.7	500.3	292.1	-22.9	71.3
2	Intermediate goods	133.1	136.4	123.4	-2.4	10.5
3	Capital goods	90.1	107.2	82.5	-16.0	30.0
4	Consumer Durables	58.7	74.7	62.8	-21.4	18.9
5	Consumer Non-Durables	123.2	119.4	105.4	3.2	13.3

* Provisional data

Note:

1. The indices are calculated with infinite decimal figures and are rounded up to one decimal figure when published.
2. Percentage changes are calculated on the basis of indices with infinite decimal figures and are rounded up to one decimal figure when published.

Table 4: Annual rates of change of the Turnover Index in Industry for the Eurozone Countries

Base year: 2005=100.0

Branch code	Branch name	October			Rate of change (%)	
		2013*	2012	2011	2013/2012	2012/2011
	OVERALL INDEX	165.7	171.0	158.8	-3.1	7.7
	INDUSTRIAL SECTIONS					
B	MINING AND QUARRYING	129.5	134.1	117.8	-3.5	13.8
C	MANUFACTURING	162.1	167.3	155.5	-3.1	7.6
	MAIN INDUSTRIAL GROUPINGS					
1	Energy	2288.1	2065.4	2071.8	10.8	-0.3
2	Intermediate goods	136.7	150.7	131.0	-9.3	15.1
3	Capital goods	36.8	52.0	55.1	-29.1	-5.6
4	Consumer Durables	144.2	149.5	79.1	-3.5	88.9
5	Consumer Non-Durables	96.3	98.3	102.8	-2.0	-4.4

* Provisional data

Table 5: Annual rates of change of the Turnover Index in Industry for the Non - Eurozone Countries

Base year: 2005=100.0

Branch code	Branch name	October			Rate of change (%)	
		2013*	2012	2011	2013/2012	2012/2011
	OVERALL INDEX	222.3	270.1	169.0	-17.7	59.9
	INDUSTRIAL SECTIONS					
B	MINING AND QUARRYING	156.7	97.0	157.8	61.4	-38.5
C	MANUFACTURING	219.4	268.3	166.0	-18.2	61.6
	MAIN INDUSTRIAL GROUPINGS					
1	Energy	328.6	453.3	238.6	-27.5	90.0
2	Intermediate goods	137.4	130.7	121.6	5.1	7.5
3	Capital goods	157.1	176.5	113.2	-11.0	56.0
4	Consumer Durables	60.1	77.2	66.3	-22.2	16.3
5	Consumer Non-Durables	157.2	143.3	104.3	9.7	37.4

* Provisional data

Note:

1. The indices are calculated with infinite decimal figures and are rounded up to one decimal figure when published.
2. Percentage changes are calculated on the basis of indices with infinite decimal figures and are rounded up to one decimal figure when published.

Table 6: Evolution of the Turnover Index in Industry (Total Market)

Base year: 2005=100.0

Year-month	Overall Index (Total Market)		Turnover Index in Industry for the Domestic Market		Turnover Index in Industry for the Non - Domestic Market	
	Index	Annual rate of change (%)	Index	Annual rate of change (%)	Index	Annual rate of change (%)
2012 X	125.2	18.9	90.7	6.3	230.8	40.5
XI	113.8	4.5	76.5	-19.7	229.0	55.7
XII	115.0	-4.5	77.3	-26.1	231.9	40.0
2013 I	99.0	-9.6	69.2	-21.5	191.6	9.4
II	97.5	-7.9	71.7	-15.6	176.7	4.4
III	103.8	-11.6	71.4	-22.3	203.3	4.2
IV	118.6	-4.5	90.5	-8.7	204.8	1.8
V	115.1	1.1	74.6	-13.3	240.7	21.4
VI	108.6	-5.1	81.6	-8.2	190.5	-0.8
VII	121.7	3.6	90.7	-5.0	216.2	18.0
VIII	111.1	1.7	78.8	-8.8	211.1	17.7
XI	105.9	-7.6	78.7	-5.7	188.0	-10.7
X*	113.5	-9.3	85.4	-5.9	198.1	-14.2

*Provisional data

Table 7: Evolution of the Turnover Index in Industry for the Non – Domestic Market

Base year: 2005=100.0

Year-month	Overall Index (Non - Domestic Market)		Turnover Index in Industry for Eurozone Countries		Turnover Index in Industry for Non - Eurozone Countries	
	Index	Annual rate of change (%)	Index	Annual rate of change (%)	Index	Annual rate of change (%)
2012 X	230.8	40.5	171.0	7.7	270.1	59.9
XI	229.0	55.7	193.9	29.1	254.2	72.9
XII	231.9	40.0	137.6	-12.7	293.4	67.2
2013 I	191.6	9.4	141.7	13.0	221.8	8.2
II	176.7	4.4	135.4	3.0	203.3	3.7
III	203.3	4.2	150.8	-10.3	238.2	10.0
IV	204.8	1.8	184.4	32.4	219.5	-8.9
V	240.7	21.4	197.8	15.2	268.4	23.9
VI	190.5	-0.8	155.3	-2.7	214.6	0.2
VII	216.2	18.0	156.4	6.7	254.1	23.4
VIII	211.1	17.7	141.0	12.8	255.9	20.4
XI	188.0	-10.7	151.8	2.2	213.7	-15.0
X*	198.1	-14.2	165.7	-3.1	222.3	-17.7

*Provisional data

Note: 1. The indices are calculated with infinite decimal figures and are rounded up to one decimal figure when published.
2. Percentage changes are calculated on the basis of indices with infinite decimal figures and are rounded up to one decimal figure when published.

Table 8: Average indices and rates of change (%) of the 12-month periods of Turnover Index in Industry (Total Market)

Base year: 2005=100.0

Branch code	Branch name	Average Indices of 12-month periods			Rate of change (%) 2013/2012	Rate of change (%) 2012/2011
		Nov. 2012- Oct. 2013*	Nov.2011- Oct. 2012	Nov. 2010- Oct. 2011		
	OVERALL INDEX	110.3	115.1	111.5	-4.2	3.2
B	MINING AND QUARRYING	94.7	87.1	97.1	8.7	-10.3
05	Mining of coal and lignite	81.5	64.8	135.0	25.8	-52.0
06	Extraction of crude petroleum and natural gas	192.3	166.2	172.6	15.8	-3.7
07	Mining of metal ores	76.4	80.7	82.4	-5.3	-2.0
08	Other mining and quarrying products	92.0	84.0	92.4	9.5	-9.1
C	MANUFACTURING	108.8	113.7	109.9	-4.3	3.4
10	Food	103.4	106.9	108.4	-3.2	-1.4
11	Beverages	82.0	89.3	98.9	-8.2	-9.7
12	Tobacco products	73.9	75.8	79.2	-2.5	-4.2
13	Textiles	32.8	34.2	45.3	-4.2	-24.4
14	Wearing apparel	41.0	41.6	49.8	-1.4	-16.6
15	Leather and related products	25.4	27.3	51.0	-7.0	-46.5
16	Wood and cork	27.4	37.9	48.3	-27.7	-21.6
17	Paper and paper products	99.5	102.4	112.0	-2.9	-8.5
18	Printing and recording services	43.7	48.7	62.4	-10.2	-21.9
19	Coke and refined petroleum products	195.9	200.2	166.5	-2.1	20.2
20	Chemicals and chemical products	86.2	85.3	94.7	1.1	-10.0
21	Basic pharmaceutical products and pharmaceutical preparations	138.1	127.0	127.7	8.7	-0.5
22	Rubber and plastic products	95.2	95.0	99.4	0.2	-4.4
23	Other non-metallic mineral products	37.4	39.2	52.3	-4.7	-24.9
24	Basic metals	89.4	105.2	114.6	-15.0	-8.2
25	Fabricated metal products	63.1	76.0	83.1	-17.0	-8.6
26	Computers, electronic and optical products	35.5	33.9	36.1	4.8	-6.2
27	Electrical equipment	87.3	92.2	87.1	-5.3	5.8
28	Machinery and equipment n.e.c.	69.7	71.2	88.1	-2.1	-19.3
29	Motor vehicles, trailers and semi-trailers	40.3	43.6	61.9	-7.6	-29.6
30	Other transport equipment	20.8	27.3	43.9	-23.6	-37.9
31	Furniture	32.5	41.9	61.9	-22.6	-32.3
32	Other manufactured goods	64.4	65.3	72.8	-1.5	-10.3
33	Repair and installation services of machinery and equipment	41.9	47.4	53.3	-11.6	-11.1
	MAIN INDUSTRIAL GROUPINGS					
1	Energy	195.6	199.7	166.4	-2.1	20.0
2	Intermediate goods	80.6	86.0	94.4	-6.2	-8.9
3	Capital goods	41.7	49.4	60.0	-15.6	-17.6
4	Consumer Durables	40.0	48.8	59.8	-18.1	-18.4
5	Consumer Non-Durables	85.6	88.9	93.3	-3.7	-4.7

*Provisional data

Note: 1. The indices are calculated with infinite decimal figures and are rounded up to one decimal figure when published.
2. Percentage changes are calculated on the basis of indices with infinite decimal figures and are rounded up to one decimal figure when published.

METHODOLOGICAL NOTES

Generally	The Turnover Index is being compiled since 2006.
Purpose of the index	The purpose of this index is to measure the monthly activity of the industrial sector in terms of value. Turnover comprises the totals invoiced (without VAT) by the observation units during the reference period and corresponds to the market sales of goods or services supplied to third parties. The purposes and the characteristics of the Turnover Index apply, as well, to the indices for the distinction between domestic and non-domestic turnover.
Legal basis	The compilation and publication of the Turnover Index is based on the framework of requirements of the Council Regulation (EC) No 1165/98 concerning short-term statistics (STS-R), as well as the amendment Regulation (EC) No 1158/05 of the European Parliament and Council, amending the Council Regulation (EC) No 1165/98. Furthermore, this index is governed by the Regulation (EEC) No.1893/2006 of the European Parliament and of the Council, by the Commission Regulation (EEC) No.656/2007 and by the Regulation (EEC) No.451/2008 of the Council.
Reference period	Month
Base year	2005=100.0.
Revision	The last revision of the Turnover Index in Industry with base year 2005=100.0 is done in the framework of the Short – Term Statistics (STS) Council Regulation (EC) No 1165/98 concerning short-term statistics. According to this regulation the index in question is updated every five years, in years ending in 0 or 5.
Statistical classifications	At the level of categories of economic activities the new Eurostat classification NACE Rev. 2 was used (Regulation 1893/2006), while at the level of main industrial groups, the allocation of two-digit and three-digit NACE Rev. 2 headings to categories of aggregate classification was used, in accordance with the Commission Regulation 656/2007. At product level, the new Eurostat classification CPA 2008 was used, according to the Council Regulation 451/2008.
Geographical coverage	The Index covers the whole country.
Coverage of economic activities	The Turnover Index in Industry covers the whole country and is compiled for all activities listed in Sections C (mining and quarrying) and D (manufacturing) of the NACE Rev.2 classification.
Computation of the Index	The Turnover Index in Industry is a fixed base index. This index is calculated initially at the four-digit level of economic activity and subsequently, with the implementation of appropriate weighting coefficients, the index is calculated at higher levels (three-level, two-level and one-level of economic activity) or at the level of Main Industrial Groupings (MIGs).
Publication of data	The Turnover Index with base year 2005=100.0 is being released since April 2009 with January 2009 as first reference month. Data with base year 2005=100.0 are available from January 2000 onwards.
References	More information about the methodology concerning the compilation and calculation of the index and for the time series is available on the Hellenic Statistical Authority (ELSTAT) website (www.statistics.gr).