



HELLENIC REPUBLIC



HELLENIC STATISTICAL AUTHORITY

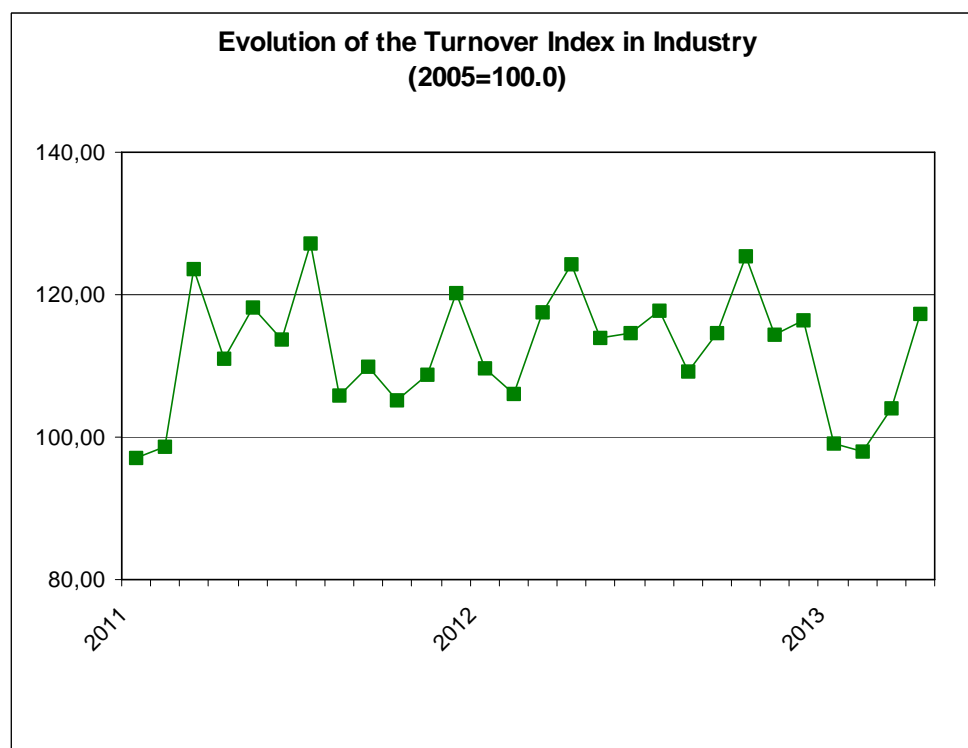
Piraeus, 19 June 2013

## PRESS RELEASE

### TURNOVER INDEX IN INDUSTRY: April 2013

The Turnover Index in Industry (both domestic and non-domestic market) in April 2013 compared with April 2012 recorded a decline of 5.7%. In April 2012, the annual rate of change of the Turnover Index in Industry was 12.0%.

The average Turnover Index in Industry for the 12-month period from May 2012 to April 2013, as compared to the 12-month period from May 2011 to April 2012, decreased by 1.7%. In April 2012, the corresponding average rate of change of the Turnover Index in Industry was 5.9%.



Information:

Economic and Short-Term  
Indicators Division

Production Indices Section

Diamantaki Aikaterini  
Tel: 0030 210 4852122  
Fax: 0030 210 4852738

The decrease of the Turnover Index in Industry by 5.7% in April 2013, compared with April 2012, was due to the annual changes as following:

- by Industrial Sections

- Mining and quarrying turnover increased by 15.5%.
- Manufacturing turnover decreased by 5.9%.

In addition, the decrease of the Turnover Index in Industry by 5.7% in April 2013, compared with April 2012, was due to the annual changes of the indices of the markets as following:

- The Turnover Index in Industry for the domestic market decreased by 10.3%.
- The Turnover Index in Industry for the non-domestic market increased by 1.2%.

The increase of the Turnover Index in Industry for the non-domestic market by 1.2% in April 2013, compared with April 2012, was due to the annual changes as following:

- The Turnover Index in Industry for the Eurozone countries increased by 32.7%.
- The Turnover Index in Industry for the non-Eurozone countries decreased by 9.9%.

**Table 1: Annual rates of change of the Turnover Index in Industry (Total Market)**

**Base year: 2005=100.0**

Branch code	Branch name	April			Rate of change (%)	
		2013*	2012	2011	2013/2012	2012/2011
	<b>OVERALL INDEX</b>	117.2	124.4	111.1	-5.7	12.0
<b>B</b>	<b>MINING AND QUARRYING</b>	78.0	67.5	78.4	15.5	-13.9
<b>05</b>	Mining of coal and lignite	0.0	53.9	80.3	-100.0	-32.9
<b>06</b>	Extraction of crude petroleum and natural gas	0.0	0.0	0.0	0.0	0.0
<b>07</b>	Mining of metal ores	93.4	66.5	77.5	40.5	-14.2
<b>08</b>	Other mining and quarrying products	85.0	73.3	84.1	16.1	-12.8
<b>C</b>	<b>MANUFACTURING</b>	116.0	123.3	109.8	-5.9	12.3
<b>10</b>	Food	107.1	98.3	106.8	8.9	-7.9
<b>11</b>	Beverages	90.8	92.9	103.1	-2.3	-9.9
<b>12</b>	Tobacco products	78.5	69.4	75.2	13.1	-7.7
<b>13</b>	Textiles	40.7	36.9	51.2	10.5	-28.0
<b>14</b>	Wearing apparel	38.3	35.8	53.7	7.2	-33.4
<b>15</b>	Leather and related products	36.1	37.6	68.1	-4.0	-44.8
<b>16</b>	Wood and cork	32.9	37.2	44.9	-11.7	-17.0
<b>17</b>	Paper and paper products	108.6	95.2	108.3	14.1	-12.1
<b>18</b>	Printing and recording services	51.6	51.4	68.4	0.5	-24.9
<b>19</b>	Coke and refined petroleum products	208.6	251.3	171.4	-17.0	46.6
<b>20</b>	Chemicals and chemical products	98.4	89.9	91.6	9.4	-1.9
<b>21</b>	Basic pharmaceutical products and pharmaceutical preparations	142.7	112.9	124.4	26.3	-9.2
<b>22</b>	Rubber and plastic products	105.3	95.9	99.9	9.8	-4.0
<b>23</b>	Other non-metallic mineral products	42.6	37.8	47.2	12.6	-20.0
<b>24</b>	Basic metals	96.6	89.6	114.3	7.8	-21.6
<b>25</b>	Fabricated metal products	64.3	68.9	75.1	-6.6	-8.3
<b>26</b>	Computers, electronic and optical products	28.0	24.2	38.8	15.4	-37.5
<b>27</b>	Electrical equipment	86.6	76.7	67.6	13.0	13.3
<b>28</b>	Machinery and equipment n. e. c.	77.7	69.0	102.8	12.6	-32.9
<b>29</b>	Motor vehicles, trailers and semi-trailers	29.2	34.7	25.6	-16.1	35.8
<b>30</b>	Other transport equipment	24.2	29.0	34.8	-16.6	-16.7
<b>31</b>	Furniture	33.6	37.3	56.3	-10.1	-33.7
<b>32</b>	Other manufactured goods	76.5	63.5	87.7	20.4	-27.6
<b>33</b>	Repair and installation services of machinery and equipment	43.3	46.7	52.5	-7.3	-11.0
	<b>MAIN INDUSTRIAL GROUPINGS</b>					
<b>1</b>	Energy	207.4	250.0	170.6	-17.0	46.5
<b>2</b>	Intermediate goods	86.1	78.2	90.6	10.2	-13.7
<b>3</b>	Capital goods	39.7	45.7	55.9	-13.2	-18.3
<b>4</b>	Consumer Durables	48.0	46.1	56.2	4.2	-18.1
<b>5</b>	Consumer Non-Durables	91.9	84.6	94.2	8.6	-10.2

\* Provisional data

Note:

1. The indices are calculated with infinite decimal figures and are rounded up to one decimal figure when published.
2. Percentage changes are calculated on the basis of indices with infinite decimal figures and are rounded up to one decimal figure when published.

**Table 2: Annual rates of change of the Turnover Index in Industry for the Domestic Market**

**Base year: 2005=100.0**

Branch code	Branch name	April			Rate of change (%)	
		2013*	2012	2011	2013/2012	2012/2011
	<b>OVERALL INDEX</b>	89.0	99.3	92.2	-10.3	7.6
<b>B</b>	<b>MINING AND QUARRYING</b>	49.0	41.0	57.4	19.6	-28.6
<b>05</b>	Mining of coal and lignite	0.0	53.9	80.3	-100.0	-32.9
<b>06</b>	Extraction of crude petroleum and natural gas	0.0	0.0	0.0	0.0	0.0
<b>07</b>	Mining of metal ores	149.6	90.6	109.8	65.1	-17.4
<b>08</b>	Other mining and quarrying products	43.9	37.0	53.8	18.8	-31.3
<b>C</b>	<b>MANUFACTURING</b>	88.3	98.7	91.4	-10.5	8.0
<b>10</b>	Food	102.8	94.7	104.7	8.6	-9.6
<b>11</b>	Beverages	89.8	91.9	103.4	-2.3	-11.2
<b>12</b>	Tobacco products	55.9	48.5	64.0	15.3	-24.3
<b>13</b>	Textiles	32.4	30.7	36.8	5.6	-16.4
<b>14</b>	Wearing apparel	31.2	35.4	59.2	-11.8	-40.1
<b>15</b>	Leather and related products	39.8	41.3	64.9	-3.5	-36.4
<b>16</b>	Wood and cork	25.5	28.5	37.7	-10.7	-24.4
<b>17</b>	Paper and paper products	103.8	88.6	101.7	17.1	-12.9
<b>18</b>	Printing and recording services	50.6	49.5	67.1	2.1	-26.1
<b>19</b>	Coke and refined petroleum products	148.0	195.2	138.7	-24.2	40.8
<b>20</b>	Chemicals and chemical products	84.3	69.3	77.1	21.6	-10.0
<b>21</b>	Basic pharmaceutical products and pharmaceutical preparations	97.2	83.8	94.6	16.0	-11.4
<b>22</b>	Rubber and plastic products	78.4	65.1	76.3	20.4	-14.6
<b>23</b>	Other non-metallic mineral products	32.9	32.7	49.4	0.7	-33.8
<b>24</b>	Basic metals	50.7	51.1	57.0	-0.8	-10.4
<b>25</b>	Fabricated metal products	40.3	51.9	62.7	-22.2	-17.3
<b>26</b>	Computers, electronic and optical products	16.8	4.5	10.6	277.3	-58.0
<b>27</b>	Electrical equipment	55.2	51.7	69.5	6.8	-25.7
<b>28</b>	Machinery and equipment n. e. c.	43.4	43.4	63.8	0.0	-32.0
<b>29</b>	Motor vehicles, trailers and semi-trailers	10.4	22.2	10.8	-53.1	106.6
<b>30</b>	Other transport equipment	9.6	13.3	11.3	-27.9	17.5
<b>31</b>	Furniture	30.2	32.4	53.1	-6.7	-39.0
<b>32</b>	Other manufactured goods	53.5	45.8	63.9	16.8	-28.3
<b>33</b>	Repair and installation services of machinery and equipment	43.3	46.7	52.5	-7.3	-11.0
	<b>MAIN INDUSTRIAL GROUPINGS</b>					
<b>1</b>	Energy	146.8	193.9	137.9	-24.3	40.6
<b>2</b>	Intermediate goods	62.7	56.2	68.6	11.4	-18.0
<b>3</b>	Capital goods	27.5	35.8	42.5	-23.2	-15.9
<b>4</b>	Consumer Durables	37.2	40.5	54.7	-8.1	-26.0
<b>5</b>	Consumer Non-Durables	84.5	80.0	90.8	5.6	-11.9

\* Provisional data

Note:

1. The indices are calculated with infinite decimal figures and are rounded up to one decimal figure when published.
2. Percentage changes are calculated on the basis of indices with infinite decimal figures and are rounded up to one decimal figure when published.

**Table 3: Annual rates of change of the Turnover Index in Industry for the Non - Domestic Market**

**Base year: 2005=100.0**

Branch code	Branch name	April			Rate of change (%)	
		2013*	2012	2011	2013/2012	2012/2011
	<b>OVERALL INDEX</b>	203.8	201.4	167.5	1.2	20.3
<b>B</b>	<b>MINING AND QUARRYING</b>	125.0	112.8	117.6	10.8	-4.1
<b>05</b>	Mining of coal and lignite	0.0	0.0	0.0	0.0	0.0
<b>06</b>	Extraction of crude petroleum and natural gas	0.0	0.0	0.0	0.0	0.0
<b>07</b>	Mining of metal ores	43.1	44.9	48.6	-3.9	-7.6
<b>08</b>	Other mining and quarrying products	147.9	131.8	136.9	12.2	-3.7
<b>C</b>	<b>MANUFACTURING</b>	201.0	198.9	164.9	1.1	20.6
<b>10</b>	Food	127.5	115.1	116.9	10.8	-1.6
<b>11</b>	Beverages	105.0	103.9	97.3	1.1	6.8
<b>12</b>	Tobacco products	138.7	125.1	104.8	10.9	19.3
<b>13</b>	Textiles	51.4	44.7	69.6	15.1	-35.8
<b>14</b>	Wearing apparel	45.0	36.6	48.4	22.9	-24.4
<b>15</b>	Leather and related products	2.9	4.9	96.9	-40.5	-94.9
<b>16</b>	Wood and cork	82.9	96.5	93.1	-14.1	3.7
<b>17</b>	Paper and paper products	148.9	151.2	164.4	-1.5	-8.0
<b>18</b>	Printing and recording services	150.9	221.1	192.5	-31.8	14.9
<b>19</b>	Coke and refined petroleum products	405.5	433.4	277.7	-6.4	56.1
<b>20</b>	Chemicals and chemical products	131.0	137.3	124.8	-4.6	10.0
<b>21</b>	Basic pharmaceutical products and pharmaceutical preparations	370.6	259.1	273.5	43.1	-5.3
<b>22</b>	Rubber and plastic products	161.7	157.8	148.1	2.5	6.5
<b>23</b>	Other non-metallic mineral products	108.2	72.7	30.8	48.8	136.4
<b>24</b>	Basic metals	143.1	128.7	172.2	11.2	-25.2
<b>25</b>	Fabricated metal products	158.3	134.9	122.1	17.3	10.5
<b>26</b>	Computers, electronic and optical products	35.6	35.8	56.0	-0.6	-36.1
<b>27</b>	Electrical equipment	122.8	104.9	62.8	17.1	66.9
<b>28</b>	Machinery and equipment n. e. c.	123.6	104.2	156.2	18.6	-33.3
<b>29</b>	Motor vehicles, trailers and semi-trailers	133.6	96.0	108.1	39.1	-11.2
<b>30</b>	Other transport equipment	32.5	40.6	58.5	-19.9	-30.6
<b>31</b>	Furniture	123.6	179.6	146.7	-31.2	22.4
<b>32</b>	Other manufactured goods	152.1	132.9	173.0	14.5	-23.2
<b>33</b>	Repair and installation services of machinery and equipment	0.0	0.0	0.0	0.0	0.0
	<b>MAIN INDUSTRIAL GROUPINGS</b>					
<b>1</b>	Energy	405.5	433.4	277.7	-6.4	56.1
<b>2</b>	Intermediate goods	135.2	123.7	136.2	9.3	-9.2
<b>3</b>	Capital goods	83.9	78.0	100.1	7.6	-22.1
<b>4</b>	Consumer Durables	83.6	66.0	60.6	26.6	9.0
<b>5</b>	Consumer Non-Durables	119.4	101.2	106.2	17.9	-4.6

\* Provisional data

Note:

1. The indices are calculated with infinite decimal figures and are rounded up to one decimal figure when published.
2. Percentage changes are calculated on the basis of indices with infinite decimal figures and are rounded up to one decimal figure when published.

**Table 4: Annual rates of change of the Turnover Index in Industry for the Eurozone Countries**

**Base year: 2005=100.0**

Branch code	Branch name	2013*	April 2012	2011	Rate of change (%)	
					2013/2012	2012/2011
	<b>OVERALL INDEX</b>	185.2	139.5	162.2	32.7	-14.0
	<b>INDUSTRIAL SECTIONS</b>					
B	MINING AND QUARRYING	125.9	118.8	107.5	6.0	10.5
C	MANUFACTURING	181.7	136.2	159.2	33.4	-14.5
	<b>MAIN INDUSTRIAL GROUPINGS</b>					
1	Energy	2684.9	1114.6	1861.5	140.9	-40.1
2	Intermediate goods	148.0	132.1	136.8	12.1	-3.4
3	Capital goods	44.7	56.2	90.0	-20.5	-37.6
4	Consumer Durables	112.8	150.5	102.7	-25.1	46.6
5	Consumer Non-Durables	112.9	94.7	105.7	19.2	-10.4

\* Provisional data

**Table 5: Annual rates of change of the Turnover Index in Industry for the Non - Eurozone Countries**

**Base year: 2005=100.0**

Branch code	Branch name	2013*	April 2012	2011	Rate of change (%)	
					2013/2012	2012/2011
	<b>OVERALL INDEX</b>	217.1	241.0	172.5	-9.9	39.7
	<b>INDUSTRIAL SECTIONS</b>					
B	MINING AND QUARRYING	125.0	108.2	126.1	15.5	-14.2
C	MANUFACTURING	214.8	239.0	170.2	-10.1	40.4
	<b>MAIN INDUSTRIAL GROUPINGS</b>					
1	Energy	337.0	412.9	230.1	-18.4	79.5
2	Intermediate goods	130.5	120.6	138.9	8.2	-13.1
3	Capital goods	139.0	105.9	112.3	31.3	-5.7
4	Consumer Durables	56.6	50.8	56.9	11.4	-10.7
5	Consumer Non-Durables	123.0	107.2	105.7	14.8	1.4

\* Provisional data

*Note:*

1. The indices are calculated with infinite decimal figures and are rounded up to one decimal figure when published.
2. Percentage changes are calculated on the basis of indices with infinite decimal figures and are rounded up to one decimal figure when published.

**Table 6: Evolution of the Turnover Index in Industry (Total Market)****Base year: 2005=100.0**

Year-month	Overall Index (Total Market)		Turnover Index in Industry for the Domestic Market		Turnover Index in Industry for the Non - Domestic Market	
	Index	Annual rate of change (%)	Index	Annual rate of change (%)	Index	Annual rate of change (%)
2012 IV	124.4	12.0	99.3	7.6	201.4	20.3
V	114.0	-3.7	86.2	-5.0	198.5	-2.0
VI	114.6	0.7	89.0	-3.7	192.0	7.6
VII	117.7	-7.5	95.6	-6.8	183.4	-8.6
VIII	109.3	2.9	86.4	-5.4	179.4	19.0
IX	114.7	4.0	83.4	-8.6	210.5	27.0
X	125.3	19.1	90.8	6.4	230.9	40.6
XI	114.4	5.0	77.1	-19.0	229.0	55.8
XII	116.4	-3.3	78.6	-24.8	232.9	40.7
2013 I	99.1	-9.7	69.5	-21.4	191.3	9.2
II	98.0	-7.5	72.4	-14.9	176.6	4.3
III	104.1	-11.4	71.8	-21.9	203.3	4.2
IV*	117.2	-5.7	89.0	-10.3	203.8	1.2

\*Provisional data

**Table 7: Evolution of the Turnover Index in Industry for the Non – Domestic Market****Base year: 2005=100.0**

Year-month	Overall Index (Non - Domestic Market)		Turnover Index in Industry for Eurozone Countries		Turnover Index in Industry for Non - Eurozone Countries	
	Index	Annual rate of change (%)	Index	Annual rate of change (%)	Index	Annual rate of change (%)
2012 IV	201.4	20.3	139.5	-14.0	241.0	39.7
V	198.5	-2.0	171.8	3.8	216.9	-4.8
VI	192.0	7.6	159.6	0.1	214.4	11.6
VII	183.4	-8.6	146.8	-2.7	206.0	-11.3
VIII	179.4	19.0	125.1	-6.3	212.5	30.7
IX	210.5	27.0	148.7	2.8	251.2	38.8
X	230.9	40.6	171.5	8.0	270.2	59.9
XI	229.0	55.8	194.1	29.2	254.2	72.9
XII	232.9	40.7	141.2	-10.4	293.2	67.1
2013 I	191.3	9.2	142.0	13.2	221.0	7.8
II	176.6	4.3	135.8	3.2	202.9	3.4
III	203.3	4.2	150.3	-10.7	238.8	10.2
IV*	203.8	1.2	185.2	32.7	217.1	-9.9

\*Provisional data

Note: 1. The indices are calculated with infinite decimal figures and are rounded up to one decimal figure when published.  
2. Percentage changes are calculated on the basis of indices with infinite decimal figures and are rounded up to one decimal figure when published.

**Table 8: Average indices and rates of change (%) of the 12-month periods of Turnover Index in Industry (Total Market)**

**Base year: 2005=100.0**

Branch code	Branch name	Average Indices of 12-month periods			Rate of change (%) 2013/2012	Rate of change (%) 2012/2011
		May 2012-Apr. 2013*	May 2011-Apr. 2012	May 2010-Apr. 2011		
	<b>OVERALL INDEX</b>	112.1	114.0	107.7	-1.7	5.9
<b>B</b>	<b>MINING AND QUARRYING</b>	83.4	93.4	102.1	-10.7	-8.5
<b>05</b>	Mining of coal and lignite	33.4	113.7	144.3	-70.6	-21.2
<b>06</b>	Extraction of crude petroleum and natural gas	137.8	183.6	196.7	-25.0	-6.7
<b>07</b>	Mining of metal ores	77.0	82.5	77.2	-6.7	6.9
<b>08</b>	Other mining and quarrying products	83.7	87.9	97.7	-4.8	-10.0
<b>C</b>	<b>MANUFACTURING</b>	110.7	112.5	106.1	-1.6	6.1
<b>10</b>	Food	105.8	106.7	108.8	-0.8	-1.9
<b>11</b>	Beverages	87.5	92.6	104.3	-5.5	-11.3
<b>12</b>	Tobacco products	73.1	81.0	74.1	-9.8	9.4
<b>13</b>	Textiles	33.9	37.8	48.8	-10.4	-22.6
<b>14</b>	Wearing apparel	41.5	45.1	53.9	-8.0	-16.4
<b>15</b>	Leather and related products	23.9	40.1	54.5	-40.4	-26.3
<b>16</b>	Wood and cork	37.5	43.6	55.0	-14.0	-20.8
<b>17</b>	Paper and paper products	102.1	105.9	112.4	-3.6	-5.8
<b>18</b>	Printing and recording services	47.1	53.2	72.8	-11.5	-26.9
<b>19</b>	Coke and refined petroleum products	194.8	188.1	149.1	3.6	26.2
<b>20</b>	Chemicals and chemical products	85.2	89.0	93.4	-4.2	-4.7
<b>21</b>	Basic pharmaceutical products and pharmaceutical preparations	132.3	126.2	131.0	4.8	-3.6
<b>22</b>	Rubber and plastic products	95.1	96.4	98.4	-1.3	-2.0
<b>23</b>	Other non-metallic mineral products	38.3	42.2	64.7	-9.2	-34.7
<b>24</b>	Basic metals	97.0	110.9	107.6	-12.5	3.0
<b>25</b>	Fabricated metal products	70.1	79.4	82.5	-11.8	-3.7
<b>26</b>	Computers, electronic and optical products	32.3	33.0	41.6	-2.1	-20.7
<b>27</b>	Electrical equipment	93.9	86.8	89.5	8.3	-3.0
<b>28</b>	Machinery and equipment n. e. c.	73.1	76.3	87.6	-4.2	-12.9
<b>29</b>	Motor vehicles, trailers and semi-trailers	38.9	49.5	64.1	-21.4	-22.8
<b>30</b>	Other transport equipment	28.6	38.5	47.3	-25.7	-18.6
<b>31</b>	Furniture	37.0	51.6	68.8	-28.2	-25.1
<b>32</b>	Other manufactured goods	63.1	67.1	76.3	-5.9	-12.1
<b>33</b>	Repair and installation services of machinery and equipment	44.5	51.5	52.6	-13.6	-2.2
	<b>MAIN INDUSTRIAL GROUPINGS</b>					
<b>1</b>	Energy	194.2	187.9	149.2	3.3	25.9
<b>2</b>	Intermediate goods	83.6	89.2	94.3	-6.2	-5.4
<b>3</b>	Capital goods	45.8	54.8	60.5	-16.5	-9.4
<b>4</b>	Consumer Durables	45.0	55.0	64.5	-18.3	-14.7
<b>5</b>	Consumer Non-Durables	87.8	90.2	96.1	-2.7	-6.2

\*Provisional data

Note: 1. The indices are calculated with infinite decimal figures and are rounded up to one decimal figure when published.  
2. Percentage changes are calculated on the basis of indices with infinite decimal figures and are rounded up to one decimal figure when published.



## METHODOLOGICAL NOTES

<b>Generally</b>	The Turnover Index is being compiled since 2006.
<b>Purpose of the index</b>	The purpose of this index is to measure the monthly activity of the industrial sector in terms of value. Turnover comprises the totals invoiced (without VAT) by the observation units during the reference period and corresponds to the market sales of goods or services supplied to third parties. The purposes and the characteristics of the Turnover Index apply, as well, to the indices for the distinction between domestic and non-domestic turnover.
<b>Legal basis</b>	The compilation and publication of the Turnover Index is based on the framework of requirements of the Council Regulation (EC) No 1165/98 concerning short-term statistics (STS-R), as well as the amendment Regulation (EC) No 1158/05 of the European Parliament and Council, amending the Council Regulation (EC) No 1165/98. Furthermore, this index is governed by the Regulation (EEC) No.1893/2006 of the European Parliament and of the Council, by the Commission Regulation (EEC) No.656/2007 and by the Regulation (EEC) No.451/2008 of the Council.
<b>Reference period</b>	Month
<b>Base year</b>	2005=100.0.
<b>Revision</b>	The last revision of the Turnover Index in Industry with base year 2005=100.0 is done in the framework of the Short – Term Statistics (STS) Council Regulation (EC) No 1165/98 concerning short-term statistics. According to this regulation the index in question is updated every five years, in years ending in 0 or 5.
<b>Statistical classifications</b>	At the level of categories of economic activities the new Eurostat classification NACE Rev. 2 was used (Regulation 1893/2006), while at the level of main industrial groups, the allocation of two-digit and three-digit NACE Rev. 2 headings to categories of aggregate classification was used, in accordance with the Commission Regulation 656/2007. At product level, the new Eurostat classification CPA 2008 was used, according to the Council Regulation 451/2008.
<b>Geographical coverage</b>	The Index covers the whole country.
<b>Coverage of economic activities</b>	The Turnover Index in Industry covers the whole country and is compiled for all activities listed in Sections C (mining and quarrying) and D (manufacturing) of the NACE Rev.2 classification.
<b>Computation of the Index</b>	The Turnover Index in Industry is a fixed base index. This index is calculated initially at the four-digit level of economic activity and subsequently, with the implementation of appropriate weighting coefficients, the index is calculated at higher levels (three-level, two-level and one-level of economic activity) or at the level of Main Industrial Groupings (MIGs).
<b>Publication of data</b>	The Turnover Index with base year 2005=100.0 is being released since April 2009 with January 2009 as first reference month. Data with base year 2005=100.0 are available from January 2000 onwards.
<b>References</b>	More information about the methodology concerning the compilation and calculation of the index and for the time series is available on the Hellenic Statistical Authority (ELSTAT) website ( <a href="http://www.statistics.gr">www.statistics.gr</a> ).