



HELLENIC REPUBLIC



HELLENIC STATISTICAL AUTHORITY

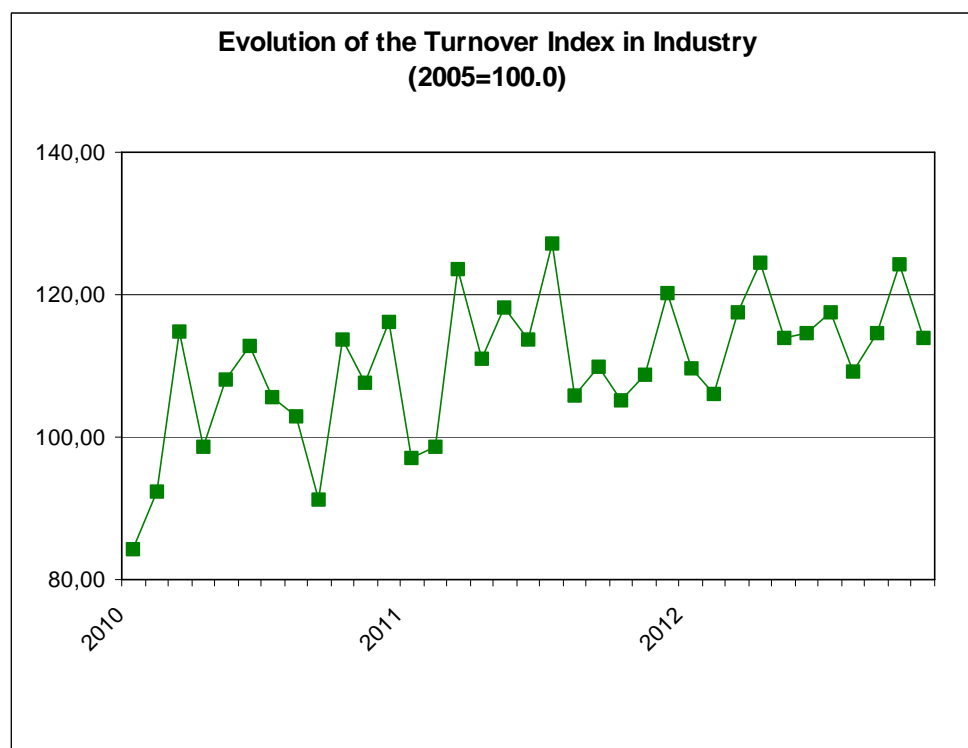
Piraeus, 18 January 2013

PRESS RELEASE

TURNOVER INDEX IN INDUSTRY: November 2012

The Turnover Index in Industry (both domestic and non-domestic market) in November 2012 compared with November 2011 recorded an increase of 4.6%. In November 2011, the annual rate of change of the Turnover Index in Industry was 0.4 %.

The average Turnover Index in Industry for the 12-month period from December 2011 to November 2012, as compared to the 12-month period from December 2010 to November 2011, increased by 3.6%. In November 2011, the corresponding average rate of change of the Turnover Index in Industry was 7.8%.



Information:

Economic and Short-Term
Indicators Division

Production Indices Section

Diamantaki Aikaterini
Tel: 0030 213 1352122
Fax: 0030 213 1352738

The increase of the Turnover Index in Industry by 4.6% in November 2012, compared with November 2011, was due to the annual changes as following:

- by Industrial Sections

- Mining and quarrying turnover increased by 7.8%.
- Manufacturing turnover increased by 4.5%.

In addition, the increase of the Turnover Index in Industry by 4.6% in November 2012, compared with November 2011, was due to the annual changes of the indices of the markets as following:

- The Turnover Index in Industry for the domestic market decreased by 19.3%.
- The Turnover Index in Industry for the non-domestic market increased by 54.9%.

The increase of the Turnover Index in Industry for the non-domestic market by 54.9% in November 2012, compared with November 2011, was due to the annual changes as following:

- The Turnover Index in Industry for the Eurozone countries increased by 27.4%.
- The Turnover Index in Industry for the non-Eurozone countries increased by 71.9%.

Table 1: Annual rates of change of the Turnover Index in Industry (Total Market)

Base year: 2005=100.0

Branch code	Branch name	November			Rate of change (%)	
		2012*	2011	2010	2012/2011	2011/2010
	OVERALL INDEX	113.9	109.0	108.5	4.6	0.4
B	MINING AND QUARRYING	98.4	91.3	94.8	7.8	-3.7
05	Mining of coal and lignite	79.1	173.2	118.5	-54.3	46.1
06	Extraction of crude petroleum and natural gas	0.0	0.0	0.0	—	—
07	Mining of metal ores	84.2	91.2	67.8	-7.7	34.5
08	Other mining and quarrying products	109.1	93.0	105.3	17.4	-11.7
C	MANUFACTURING	112.4	107.5	107.0	4.5	0.5
10	Food	106.5	109.3	112.1	-2.6	-2.5
11	Beverages	65.3	65.3	79.9	-0.1	-18.2
12	Tobacco products	75.8	82.0	76.2	-7.6	7.6
13	Textiles	35.9	38.7	51.6	-7.4	-24.9
14	Wearing apparel	47.2	50.5	55.1	-6.5	-8.3
15	Leather and related products	33.1	46.2	60.0	-28.3	-23.0
16	Wood and cork	43.4	50.6	60.7	-14.3	-16.6
17	Paper and paper products	103.8	111.1	125.0	-6.5	-11.2
18	Printing and recording services	52.6	54.4	75.8	-3.4	-28.2
19	Coke and refined petroleum products	201.2	162.8	141.6	23.6	15.0
20	Chemicals and chemical products	82.4	81.4	94.0	1.2	-13.4
21	Basic pharmaceutical products and pharmaceutical preparations	145.1	146.2	137.4	-0.7	6.3
22	Rubber and plastic products	96.7	97.1	99.9	-0.4	-2.9
23	Other non-metallic mineral products	37.5	44.3	74.8	-15.4	-40.8
24	Basic metals	100.2	127.8	116.9	-21.6	9.3
25	Fabricated metal products	60.3	77.8	83.2	-22.5	-6.5
26	Computers, electronic and optical products	24.9	32.0	50.3	-22.3	-36.4
27	Electrical equipment	89.8	84.7	99.9	6.0	-15.2
28	Machinery and equipment n.e.c.	79.9	60.3	88.6	32.4	-31.9
29	Motor vehicles, trailers and semi-trailers	32.0	45.0	68.0	-28.9	-33.8
30	Other transport equipment	37.7	47.7	66.4	-20.9	-28.2
31	Furniture	40.6	50.3	76.8	-19.2	-34.5
32	Other manufactured goods	64.2	68.6	68.9	-6.3	-0.5
33	Repair and installation services of machinery and equipment	50.8	63.1	66.1	-19.5	-4.5
	MAIN INDUSTRIAL GROUPINGS					
1	Energy	200.3	162.3	141.1	23.4	15.1
2	Intermediate goods	84.9	94.9	101.4	-10.6	-6.4
3	Capital goods	48.0	58.9	71.7	-18.5	-17.8
4	Consumer Durables	47.3	53.4	66.9	-11.5	-20.1
5	Consumer Non-Durables	86.1	88.3	94.1	-2.5	-6.1

* Provisional data

Note:

1. The indices are calculated with infinite decimal figures and are rounded up to one decimal figure when published.
2. Percentage changes are calculated on the basis of indices with infinite decimal figures and are rounded up to one decimal figure when published.

Table 2: Annual rates of change of the Turnover Index in Industry for the Domestic Market

Base year: 2005=100.0

Branch code	Branch name	November			Rate of change (%)	
		2012*	2011	2010	2012/2011	2011/2010
	OVERALL INDEX	76.9	95.2	95.2	-19.3	0.0
B	MINING AND QUARRYING	61.0	68.3	90.2	-10.8	-24.3
05	Mining of coal and lignite	79.1	173.2	118.5	-54.3	46.1
06	Extraction of crude petroleum and natural gas	0.0	0.0	0.0	—	—
07	Mining of metal ores	107.6	121.9	114.3	-11.7	6.6
08	Other mining and quarrying products	59.1	58.6	93.9	0.8	-37.6
C	MANUFACTURING	76.0	94.2	93.9	-19.3	0.4
10	Food	102.6	106.5	111.0	-3.7	-4.1
11	Beverages	61.1	62.6	77.7	-2.4	-19.4
12	Tobacco products	46.0	52.7	54.8	-12.6	-3.9
13	Textiles	27.6	32.2	47.9	-14.2	-32.8
14	Wearing apparel	35.2	45.8	58.0	-23.0	-21.0
15	Leather and related products	36.5	41.2	59.0	-11.3	-30.2
16	Wood and cork	37.0	44.6	58.3	-17.2	-23.5
17	Paper and paper products	100.0	106.5	122.8	-6.1	-13.3
18	Printing and recording services	51.5	53.2	74.1	-3.0	-28.3
19	Coke and refined petroleum products	107.5	161.1	109.4	-33.3	47.3
20	Chemicals and chemical products	59.6	58.0	69.5	2.8	-16.5
21	Basic pharmaceutical products and pharmaceutical preparations	102.7	100.9	102.7	1.8	-1.8
22	Rubber and plastic products	70.0	76.7	85.6	-8.7	-10.4
23	Other non-metallic mineral products	29.1	40.9	76.6	-29.0	-46.6
24	Basic metals	66.3	66.0	88.4	0.5	-25.3
25	Fabricated metal products	41.0	57.2	79.5	-28.3	-28.1
26	Computers, electronic and optical products	10.9	12.8	28.4	-14.9	-54.9
27	Electrical equipment	72.0	63.5	93.1	13.4	-31.8
28	Machinery and equipment n.e.c.	40.9	44.3	67.3	-7.8	-34.1
29	Motor vehicles, trailers and semi-trailers	13.4	31.7	30.2	-57.8	5.1
30	Other transport equipment	6.7	11.1	196.5	-39.9	-94.3
31	Furniture	35.5	47.6	74.3	-25.4	-35.9
32	Other manufactured goods	42.7	52.3	57.6	-18.3	-9.1
33	Repair and installation services of machinery and equipment	50.8	63.1	66.1	-19.5	-4.5
	MAIN INDUSTRIAL GROUPINGS					
1	Energy	107.0	160.5	108.9	-33.4	47.3
2	Intermediate goods	63.7	68.1	88.8	-6.4	-23.3
3	Capital goods	32.7	44.9	87.0	-27.3	-48.4
4	Consumer Durables	36.9	49.1	68.8	-24.7	-28.6
5	Consumer Non-Durables	77.3	80.4	89.6	-3.8	-10.3

* Provisional data

Note:

1. The indices are calculated with infinite decimal figures and are rounded up to one decimal figure when published.
2. Percentage changes are calculated on the basis of indices with infinite decimal figures and are rounded up to one decimal figure when published.

Table 3: Annual rates of change of the Turnover Index in Industry for the Non - Domestic Market

Base year: 2005=100.0

Branch code	Branch name	November			Rate of change (%)	
		2012*	2011	2010	2012/2011	2011/2010
	OVERALL INDEX	227.8	147.0	155.6	54.9	-5.5
B	MINING AND QUARRYING	153.6	123.4	94.8	24.5	30.1
05	Mining of coal and lignite	0.0	0.0	0.0	—	—
06	Extraction of crude petroleum and natural gas	0.0	0.0	0.0	—	—
07	Mining of metal ores	63.3	63.7	26.2	-0.7	143.6
08	Other mining and quarrying products	178.7	140.0	114.0	27.7	22.8
C	MANUFACTURING	224.4	144.3	153.5	55.5	-6.0
10	Food	123.0	121.5	115.0	1.3	5.6
11	Beverages	121.9	105.1	110.9	16.0	-5.2
12	Tobacco products	154.8	159.9	133.2	-3.2	20.0
13	Textiles	45.9	46.9	56.5	-2.2	-16.9
14	Wearing apparel	58.6	55.7	54.0	5.2	3.1
15	Leather and related products	2.5	90.8	68.4	-97.3	32.7
16	Wood and cork	86.8	91.1	77.0	-4.8	18.4
17	Paper and paper products	135.1	148.6	143.1	-9.1	3.8
18	Printing and recording services	154.7	173.2	237.9	-10.7	-27.2
19	Coke and refined petroleum products	505.6	168.3	246.3	200.4	-31.7
20	Chemicals and chemical products	135.8	135.7	150.4	0.1	-9.8
21	Basic pharmaceutical products and pharmaceutical preparations	358.0	373.2	311.5	-4.1	19.8
22	Rubber and plastic products	150.1	138.7	129.6	8.2	7.0
23	Other non-metallic mineral products	93.5	62.6	62.3	49.4	0.4
24	Basic metals	134.8	190.0	145.9	-29.1	30.3
25	Fabricated metal products	135.0	153.7	97.2	-12.2	58.1
26	Computers, electronic and optical products	33.4	42.8	61.7	-21.9	-30.7
27	Electrical equipment	108.5	107.8	104.9	0.6	2.7
28	Machinery and equipment n.e.c.	128.6	79.7	110.7	61.3	-28.0
29	Motor vehicles, trailers and semi-trailers	133.8	108.1	436.4	23.8	-75.2
30	Other transport equipment	63.4	63.7	61.1	-0.5	4.3
31	Furniture	197.8	119.3	134.0	65.8	-11.0
32	Other manufactured goods	146.7	140.7	117.3	4.3	20.0
33	Repair and installation services of machinery and equipment	0.0	0.0	0.0	—	—
	MAIN INDUSTRIAL GROUPINGS					
1	Energy	505.6	168.3	246.3	200.4	-31.7
2	Intermediate goods	128.2	150.4	127.2	-14.8	18.3
3	Capital goods	94.6	92.1	100.1	2.7	-8.0
4	Consumer Durables	80.0	64.3	58.2	24.3	10.6
5	Consumer Non-Durables	118.9	118.7	110.3	0.2	7.6

* Provisional data

Note:

1. The indices are calculated with infinite decimal figures and are rounded up to one decimal figure when published.
2. Percentage changes are calculated on the basis of indices with infinite decimal figures and are rounded up to one decimal figure when published.

Table 4: Annual rates of change of the Turnover Index in Industry for the Eurozone Countries

Base year: 2005=100.0

Branch code	Branch name	November			Rate of change (%)	
		2012*	2011	2010	2012/2011	2011/2010
	OVERALL INDEX	191.3	150.2	147.8	27.4	1.6
	INDUSTRIAL SECTIONS					
B	MINING AND QUARRYING	139.4	129.9	112.9	7.4	15.0
C	MANUFACTURING	187.5	146.6	144.7	27.9	1.4
	MAIN INDUSTRIAL GROUPINGS					
1	Energy	3208.5	703.7	1176.0	356.0	-40.2
2	Intermediate goods	139.5	159.1	146.0	-12.3	9.0
3	Capital goods	41.3	59.7	66.3	-30.9	-9.9
4	Consumer Durables	190.0	99.8	77.5	90.5	28.7
5	Consumer Non-Durables	104.5	112.1	97.7	-6.8	14.7

* Provisional data

Table 5: Annual rates of change of the Turnover Index in Industry for the Non - Eurozone Countries

Base year: 2005=100.0

Branch code	Branch name	November			Rate of change (%)	
		2012*	2011	2010	2012/2011	2011/2010
	OVERALL INDEX	252.7	147.0	161.3	71.9	-8.9
	INDUSTRIAL SECTIONS					
B	MINING AND QUARRYING	166.9	118.4	79.3	41.1	49.3
C	MANUFACTURING	249.6	144.8	159.8	72.4	-9.4
	MAIN INDUSTRIAL GROUPINGS					
1	Energy	424.4	152.2	218.4	178.8	-30.3
2	Intermediate goods	123.4	148.0	114.2	-16.6	29.5
3	Capital goods	164.3	132.0	144.3	24.5	-8.5
4	Consumer Durables	63.2	56.4	71.3	12.1	-20.9
5	Consumer Non-Durables	130.7	121.8	121.3	7.3	0.4

* Provisional data

Note:

1. The indices are calculated with infinite decimal figures and are rounded up to one decimal figure when published.
2. Percentage changes are calculated on the basis of indices with infinite decimal figures and are rounded up to one decimal figure when published.

Table 6: Evolution of the Turnover Index in Industry (Total Market)**Base year: 2005=100.0**

Year-month	Overall Index (Total Market)		Turnover Index in Industry for the Domestic Market		Turnover Index in Industry for the Non - Domestic Market	
	Index	Annual rate of change (%)	Index	Annual rate of change (%)	Index	Annual rate of change (%)
2011 XI	109.0	0.4	95.2	0.0	147.0	-5.5
XII	120.4	2.4	104.5	1.6	165.6	-2.0
2012 I	109.8	12.8	88.4	3.4	175.0	33.1
II	106.1	7.5	85.3	-4.8	169.0	36.8
III	117.6	-4.8	92.1	-7.6	194.7	-0.2
IV	124.4	12.0	99.4	7.8	201.0	20.0
V	113.9	-3.8	86.3	-4.8	197.5	-2.5
VI	114.6	0.6	89.2	-3.5	191.3	7.2
VII	117.6	-7.5	95.7	-6.7	182.7	-9.0
VIII	109.2	2.8	86.6	-5.2	178.5	18.4
XI	114.7	4.0	83.7	-8.3	209.6	26.4
X	124.4	18.2	90.4	6.0	228.1	38.8
XI*	113.9	4.6	76.9	-19.3	227.8	54.9

*Provisional data

Table 7: Evolution of the Turnover Index in Industry for the Non – Domestic Market**Base year: 2005=100.0**

Year-month	Overall Index (Non - Domestic Market)		Turnover Index in Industry for Eurozone Countries		Turnover Index in Industry for Non - Eurozone Countries	
	Index	Annual rate of change (%)	Index	Annual rate of change (%)	Index	Annual rate of change (%)
2011 XI	147.0	-5.5	150.2	1.6	147.0	-8.9
XII	165.6	-2.0	157.6	5.7	175.5	-2.7
2012 I	175.0	33.1	125.0	7.4	204.9	45.5
II	169.0	36.8	131.9	-13.6	195.6	78.4
III	194.7	-0.2	163.7	1.2	217.2	-0.6
IV	201.0	20.0	137.3	-15.4	240.9	39.7
V	197.5	-2.5	172.0	3.9	215.5	-5.4
VI	191.3	7.2	159.9	0.3	213.3	11.0
VII	182.7	-9.0	147.6	-2.2	204.5	-11.9
VIII	178.5	18.4	125.1	-6.3	211.2	29.9
XI	209.6	26.4	144.7	0.0	250.4	38.3
X	228.1	38.8	166.4	4.8	267.5	58.3
XI*	227.8	54.9	191.3	27.4	252.7	71.9

*Provisional data

Note: 1. The indices are calculated with infinite decimal figures and are rounded up to one decimal figure when published.
2. Percentage changes are calculated on the basis of indices with infinite decimal figures and are rounded up to one decimal figure when published.

Table 8: Average indices and rates of change (%) of the 12-month periods of Turnover Index in Industry (Total Market)

Base year: 2005=100.0

Branch code	Branch name	Average Indices of 12-month periods			Rate of change (%) 2012/2011	Rate of change (%) 2011/2010
		Dec. 2011- Nov. 2012*	Dec.2010- Nov. 2011	Dec. 2009- Nov. 2010		
	OVERALL INDEX	115.5	111.5	103.5	3.6	7.8
B	MINING AND QUARRYING	87.7	96.8	103.2	-9.4	-6.2
05	Mining of coal and lignite	57.0	139.5	148.5	-59.2	-6.1
06	Extraction of crude petroleum and natural gas	166.2	172.6	175.0	-3.7	-1.3
07	Mining of metal ores	80.1	84.3	74.6	-4.9	13.1
08	Other mining and quarrying products	85.4	91.4	101.0	-6.5	-9.5
C	MANUFACTURING	114.1	110.0	101.8	3.8	8.0
10	Food	106.6	108.2	108.7	-1.5	-0.5
11	Beverages	89.3	97.7	107.3	-8.6	-9.0
12	Tobacco products	75.3	79.6	80.9	-5.4	-1.5
13	Textiles	34.1	44.3	50.2	-22.9	-11.8
14	Wearing apparel	41.7	49.5	60.4	-15.7	-18.1
15	Leather and related products	26.3	49.9	63.5	-47.3	-21.4
16	Wood and cork	39.6	47.5	61.2	-16.6	-22.4
17	Paper and paper products	102.2	110.8	113.2	-7.8	-2.1
18	Printing and recording services	49.1	60.6	81.5	-18.9	-25.6
19	Coke and refined petroleum products	203.4	168.3	133.4	20.9	26.1
20	Chemicals and chemical products	84.9	93.7	92.3	-9.4	1.4
21	Basic pharmaceutical products and pharmaceutical preparations	127.0	128.4	135.0	-1.1	-4.8
22	Rubber and plastic products	95.0	99.2	95.4	-4.2	3.9
23	Other non-metallic mineral products	38.6	49.7	73.7	-22.3	-32.6
24	Basic metals	103.0	115.5	96.3	-10.8	19.9
25	Fabricated metal products	74.2	82.7	81.9	-10.2	1.0
26	Computers, electronic and optical products	32.5	34.5	44.0	-6.0	-21.6
27	Electrical equipment	90.6	85.9	88.1	5.5	-2.6
28	Machinery and equipment n.e.c.	72.6	85.8	82.8	-15.3	3.6
29	Motor vehicles, trailers and semi-trailers	42.4	60.0	58.4	-29.3	2.8
30	Other transport equipment	31.6	42.3	49.7	-25.3	-14.9
31	Furniture	41.6	59.7	77.4	-30.3	-22.9
32	Other manufactured goods	65.0	72.8	78.5	-10.8	-7.3
33	Repair and installation services of machinery and equipment	46.2	53.1	55.3	-13.0	-4.1
	MAIN INDUSTRIAL GROUPINGS					
1	Energy	202.9	168.2	133.6	20.6	25.9
2	Intermediate goods	84.9	93.9	91.8	-9.5	2.3
3	Capital goods	49.2	58.9	60.2	-16.4	-2.2
4	Consumer Durables	48.5	58.7	70.1	-17.4	-16.2
5	Consumer Non-Durables	88.8	92.8	99.1	-4.3	-6.3

*Provisional data

Note: 1. The indices are calculated with infinite decimal figures and are rounded up to one decimal figure when published.
2. Percentage changes are calculated on the basis of indices with infinite decimal figures and are rounded up to one decimal figure when published.

METHODOLOGICAL NOTES

Generally	The Turnover Index is being compiled since 2006.
Purpose of the index	The purpose of this index is to measure the monthly activity of the industrial sector in terms of value. Turnover comprises the totals invoiced (without VAT) by the observation units during the reference period and corresponds to the market sales of goods or services supplied to third parties. The purposes and the characteristics of the Turnover Index apply, as well, to the indices for the distinction between domestic and non-domestic turnover.
Legal basis	The compilation and publication of the Turnover Index is based on the framework of requirements of the Council Regulation (EC) No 1165/98 concerning short-term statistics (STS-R), as well as the amendment Regulation (EC) No 1158/05 of the European Parliament and Council, amending the Council Regulation (EC) No 1165/98. Furthermore, this index is governed by the Regulation (EEC) No.1893/2006 of the European Parliament and of the Council, by the Commission Regulation (EEC) No.656/2007 and by the Regulation (EEC) No.451/2008 of the Council.
Reference period	Month
Base year	2005=100.0.
Revision	The last revision of the Turnover Index in Industry with base year 2005=100.0 is done in the framework of the Short – Term Statistics (STS) Council Regulation (EC) No 1165/98 concerning short-term statistics. According to this regulation the index in question is updated every five years, in years ending in 0 or 5.
Statistical classifications	At the level of categories of economic activities the new Eurostat classification NACE Rev. 2 was used (Regulation 1893/2006), while at the level of main industrial groups, the allocation of two-digit and three-digit NACE Rev. 2 headings to categories of aggregate classification was used, in accordance with the Commission Regulation 656/2007. At product level, the new Eurostat classification CPA 2008 was used, according to the Council Regulation 451/2008.
Geographical coverage	The Index covers the whole country.
Coverage of economic activities	The Turnover Index in Industry covers the whole country and is compiled for all activities listed in Sections C (mining and quarrying) and D (manufacturing) of the NACE Rev.2 classification.
Computation of the Index	The Turnover Index in Industry is a fixed base index. This index is calculated initially at the four-digit level of economic activity and subsequently, with the implementation of appropriate weighting coefficients, the index is calculated at higher levels (three-level, two-level and one-level of economic activity) or at the level of Main Industrial Groupings (MIGs).
Publication of data	The Turnover Index with base year 2005=100.0 is being released since April 2009 with January 2009 as first reference month. Data with base year 2005=100.0 are available from January 2000 onwards.
References	More information about the methodology concerning the compilation and calculation of the index and for the time series is available on the Hellenic Statistical Authority (ELSTAT) website (www.statistics.gr).