



HELLENIC REPUBLIC



HELLENIC STATISTICAL AUTHORITY

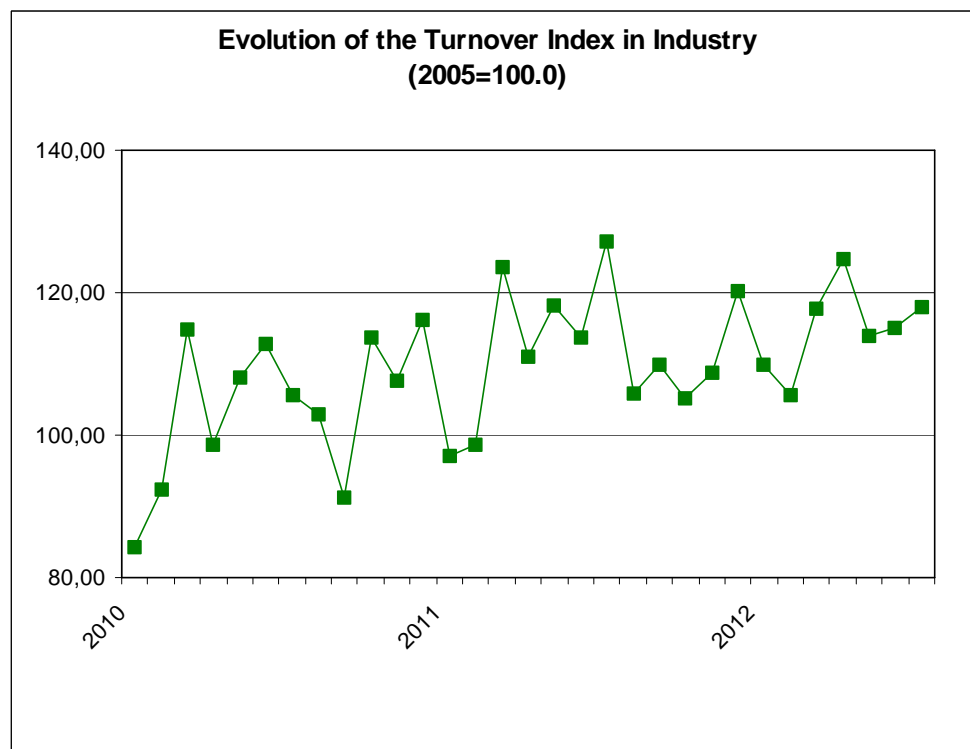
Piraeus, 19 September 2012

PRESS RELEASE

TURNOVER INDEX IN INDUSTRY: July 2012

The Turnover Index in Industry (both domestic and non-domestic market) in July 2012 compared with July 2011 recorded a decline of 7.3%. In July 2011, the annual rate of change of the Turnover Index in Industry was 20.4%.

The average Turnover Index in Industry for the 12-month period from August 2011 to July 2012, as compared to the 12-month period from August 2010 to July 2011, increased by 2.3%. In July 2011, the corresponding average rate of change of the Turnover Index in Industry was 9.5%.



Information:

Economic and Short-Term
Indicators Division

Production Indices Section

Diamantaki Aikaterini
Tel: 0030 213 1352122
Fax: 0030 213 1352738

The decrease of the Turnover Index in Industry by 7.3% in July 2012, compared with July 2011, was due to the annual changes as following:

- by Industrial Sections

- Mining and quarrying turnover decreased by 35.4%.
- Manufacturing turnover decreased by 6.8%.

In addition, the decrease of the Turnover Index in Industry by 7.3% in July 2012, compared with July 2011, was due to the annual changes of the indices of the markets as following:

- The Turnover Index in Industry for the domestic market decreased by 7.0%.
- The Turnover Index in Industry for the non-domestic market decreased by 8.0%.

The decrease of the Turnover Index in Industry for the non-domestic market by 8.0% in July 2012, compared with July 2011, was due to the annual changes as following:

- The Turnover Index in Industry for the Eurozone countries increased by 3.1%.
- The Turnover Index in Industry for the non-Eurozone countries decreased by 12.7%.

Table 1: Annual rates of change of the Turnover Index in Industry (Total Market)

Base year: 2005=100.0

Branch code	Branch name	July			Rate of change (%)	
		2012*	2011	2010	2012/2011	2011/2010
	OVERALL INDEX	118.0	127.2	105.6	-7.3	20.4
B	MINING AND QUARRYING	86.5	133.9	118.9	-35.4	12.6
05	Mining of coal and lignite	40.7	264.2	130.9	-84.6	101.8
06	Extraction of crude petroleum and natural gas	0.0	664.4	472.4	-100.0	40.6
07	Mining of metal ores	91.8	108.9	83.5	-15.7	30.5
08	Other mining and quarrying products	94.3	93.7	100.0	0.7	-6.4
C	MANUFACTURING	116.6	125.0	103.7	-6.8	20.6
10	Food	111.1	115.2	112.4	-3.6	2.6
11	Beverages	141.3	140.6	138.0	0.5	1.9
12	Tobacco products	80.3	92.5	77.1	-13.2	20.0
13	Textiles	34.1	43.0	49.8	-20.7	-13.7
14	Wearing apparel	45.6	55.6	59.4	-17.9	-6.4
15	Leather and related products	9.9	31.9	34.9	-69.0	-8.6
16	Wood and cork	46.0	53.7	64.2	-14.4	-16.2
17	Paper and paper products	108.0	116.4	112.0	-7.2	3.9
18	Printing and recording services	52.5	61.2	78.5	-14.3	-22.0
19	Coke and refined petroleum products	182.7	195.0	127.1	-6.3	53.4
20	Chemicals and chemical products	94.5	109.2	91.5	-13.5	19.4
21	Basic pharmaceutical products and pharmaceutical preparations	144.8	178.0	171.6	-18.7	3.8
22	Rubber and plastic products	102.1	108.4	102.1	-5.8	6.2
23	Other non-metallic mineral products	45.4	51.6	75.0	-11.9	-31.2
24	Basic metals	119.4	124.3	103.1	-3.9	20.5
25	Fabricated metal products	101.8	102.4	90.8	-0.6	12.8
26	Computers, electronic and optical products	37.9	35.1	37.5	7.9	-6.4
27	Electrical equipment	89.2	90.4	88.8	-1.3	1.9
28	Machinery and equipment n. e. c.	76.0	100.4	75.5	-24.3	33.1
29	Motor vehicles, trailers and semi-trailers	42.1	59.8	62.9	-29.6	-4.8
30	Other transport equipment	44.3	50.1	53.7	-11.6	-6.7
31	Furniture	47.8	69.6	81.6	-31.4	-14.7
32	Other manufactured goods	72.8	83.1	88.6	-12.4	-6.2
33	Repair and installation services of machinery and equipment	46.1	53.2	45.6	-13.4	16.8
	MAIN INDUSTRIAL GROUPINGS					
1	Energy	181.8	196.7	128.2	-7.6	53.4
2	Intermediate goods	95.1	102.1	95.4	-6.8	7.1
3	Capital goods	55.4	62.3	55.2	-11.0	12.9
4	Consumer Durables	58.8	67.5	74.4	-12.9	-9.3
5	Consumer Non-Durables	102.1	109.1	108.7	-6.4	0.4

* Provisional data

Note:

1. The indices are calculated with infinite decimal figures and are rounded up to one decimal figure when published.
2. Percentage changes are calculated on the basis of indices with infinite decimal figures and are rounded up to one decimal figure when published.

Table 2: Annual rates of change of the Turnover Index in Industry for the Domestic Market

Base year: 2005=100.0

Branch code	Branch name	July			Rate of change (%)	
		2012*	2011	2010	2012/2011	2011/2010
	OVERALL INDEX	95.4	102.6	98.4	-7.0	4.3
B	MINING AND QUARRYING	49.7	127.0	118.4	-60.9	7.3
05	Mining of coal and lignite	40.7	264.2	130.9	-84.6	101.8
06	Extraction of crude petroleum and natural gas	0.0	664.4	472.4	-100.0	40.6
07	Mining of metal ores	113.7	109.5	93.2	3.8	17.6
08	Other mining and quarrying products	46.4	60.2	83.2	-22.8	-27.7
C	MANUFACTURING	94.7	100.8	96.7	-6.0	4.3
10	Food	110.5	115.0	111.1	-3.9	3.5
11	Beverages	140.5	140.9	138.8	-0.3	1.5
12	Tobacco products	63.6	69.1	70.7	-8.0	-2.2
13	Textiles	28.9	36.3	41.1	-20.4	-11.8
14	Wearing apparel	30.9	39.6	47.4	-22.1	-16.4
15	Leather and related products	10.9	25.3	33.1	-57.1	-23.6
16	Wood and cork	38.7	50.3	61.4	-23.1	-18.1
17	Paper and paper products	101.8	110.2	108.4	-7.6	1.6
18	Printing and recording services	50.9	60.0	77.3	-15.2	-22.3
19	Coke and refined petroleum products	143.3	142.6	110.8	0.5	28.7
20	Chemicals and chemical products	76.7	83.7	78.5	-8.4	6.7
21	Basic pharmaceutical products and pharmaceutical preparations	103.0	133.6	131.1	-22.9	2.0
22	Rubber and plastic products	88.9	90.8	90.8	-2.2	0.0
23	Other non-metallic mineral products	35.6	51.4	74.0	-30.7	-30.6
24	Basic metals	66.7	78.6	81.9	-15.2	-4.0
25	Fabricated metal products	76.0	79.9	80.9	-4.8	-1.3
26	Computers, electronic and optical products	9.7	11.4	33.1	-14.9	-65.6
27	Electrical equipment	66.9	79.4	87.0	-15.7	-8.7
28	Machinery and equipment n. e. c.	42.7	60.5	63.0	-29.4	-4.1
29	Motor vehicles, trailers and semi-trailers	26.5	44.2	54.6	-40.0	-19.1
30	Other transport equipment	8.3	12.7	167.2	-34.5	-92.4
31	Furniture	43.3	66.8	77.3	-35.2	-13.5
32	Other manufactured goods	55.7	71.8	75.4	-22.4	-4.9
33	Repair and installation services of machinery and equipment	46.1	53.2	45.6	-13.4	16.8
	MAIN INDUSTRIAL GROUPINGS					
1	Energy	142.3	145.2	112.4	-2.0	29.2
2	Intermediate goods	69.9	80.1	85.3	-12.7	-6.2
3	Capital goods	36.1	44.4	70.8	-18.6	-37.3
4	Consumer Durables	49.4	68.5	76.4	-28.0	-10.3
5	Consumer Non-Durables	98.5	104.9	105.6	-6.1	-0.6

* Provisional data

Note:

1. The indices are calculated with infinite decimal figures and are rounded up to one decimal figure when published.
2. Percentage changes are calculated on the basis of indices with infinite decimal figures and are rounded up to one decimal figure when published.

Table 3: Annual rates of change of the Turnover Index in Industry for the Non - Domestic Market

Base year: 2005=100.0

Branch code	Branch name	July			Rate of change (%)	
		2012*	2011	2010	2012/2011	2011/2010
	OVERALL INDEX	184.6	200.6	132.9	-8.0	50.9
B	MINING AND QUARRYING	144.0	138.5	117.2	4.0	18.1
05	Mining of coal and lignite	0.0	0.0	0.0	0.0	0.0
06	Extraction of crude petroleum and natural gas	0.0	0.0	0.0	0.0	0.0
07	Mining of metal ores	72.2	108.4	74.8	-33.4	44.8
08	Other mining and quarrying products	164.0	146.9	129.0	11.7	13.8
C	MANUFACTURING	181.4	197.6	130.4	-8.2	51.6
10	Food	112.2	114.2	116.9	-1.8	-2.3
11	Beverages	146.9	133.4	120.5	10.1	10.7
12	Tobacco products	124.8	154.7	94.3	-19.3	64.1
13	Textiles	41.1	52.3	60.4	-21.3	-13.5
14	Wearing apparel	59.2	70.5	70.7	-16.0	-0.4
15	Leather and related products	1.2	90.6	50.8	-98.6	78.5
16	Wood and cork	95.3	76.7	82.4	24.4	-7.0
17	Paper and paper products	159.2	168.4	142.2	-5.5	18.4
18	Printing and recording services	201.6	173.9	204.5	15.9	-15.0
19	Coke and refined petroleum products	310.8	365.2	179.9	-14.9	103.0
20	Chemicals and chemical products	136.2	168.6	122.2	-19.2	38.0
21	Basic pharmaceutical products and pharmaceutical preparations	353.8	400.6	374.7	-11.7	6.9
22	Rubber and plastic products	132.3	145.1	127.5	-8.8	13.8
23	Other non-metallic mineral products	112.8	49.5	81.4	127.9	-39.1
24	Basic metals	172.7	170.6	124.6	1.2	36.9
25	Fabricated metal products	195.3	189.6	129.0	3.0	47.0
26	Computers, electronic and optical products	53.7	49.0	37.5	9.4	30.8
27	Electrical equipment	113.7	99.8	87.7	13.9	13.8
28	Machinery and equipment n. e. c.	117.6	147.8	92.4	-20.4	60.0
29	Motor vehicles, trailers and semi-trailers	118.9	128.2	91.0	-7.3	40.9
30	Other transport equipment	62.4	70.7	56.9	-11.7	24.2
31	Furniture	158.1	142.1	241.3	11.2	-41.1
32	Other manufactured goods	115.8	106.6	113.2	8.6	-5.8
33	Repair and installation services of machinery and equipment	0.0	0.0	0.0	0.0	0.0
	MAIN INDUSTRIAL GROUPINGS					
1	Energy	310.8	365.2	179.9	-14.9	103.0
2	Intermediate goods	147.8	147.7	116.2	0.1	27.1
3	Capital goods	114.5	113.9	72.8	0.6	56.5
4	Consumer Durables	88.6	64.3	70.5	37.7	-8.8
5	Consumer Non-Durables	112.9	122.6	117.2	-7.9	4.6

* Provisional data

Note:

1. The indices are calculated with infinite decimal figures and are rounded up to one decimal figure when published.
2. Percentage changes are calculated on the basis of indices with infinite decimal figures and are rounded up to one decimal figure when published.

Table 4: Annual rates of change of the Turnover Index in Industry for the Eurozone Countries

Base year: 2005=100.0

Branch code	Branch name	2012*	July 2011	2010	Rate of change (%)	
					2012/2011	2011/2010
	OVERALL INDEX	155.6	150.9	132.0	3.1	14.3
	INDUSTRIAL SECTIONS					
B	MINING AND QUARRYING	116.0	125.8	98.2	-7.7	28.1
C	MANUFACTURING	152.4	147.4	129.2	3.4	14.0
	MAIN INDUSTRIAL GROUPINGS					
1	Energy	1533.5	820.2	519.2	87.0	58.0
2	Intermediate goods	136.9	149.1	123.8	-8.2	20.4
3	Capital goods	70.5	86.9	53.7	-18.8	61.7
4	Consumer Durables	137.5	105.6	166.2	30.2	-36.4
5	Consumer Non-Durables	106.9	117.3	124.5	-8.9	-5.8

* Provisional data

Table 5: Annual rates of change of the Turnover Index in Industry for the Non - Eurozone Countries

Base year: 2005=100.0

Branch code	Branch name	2012*	July 2011	2010	Rate of change (%)	
					2012/2011	2011/2010
	OVERALL INDEX	202.8	232.3	136.6	-12.7	70.1
	INDUSTRIAL SECTIONS					
B	MINING AND QUARRYING	169.3	148.9	133.5	13.7	11.5
C	MANUFACTURING	199.7	229.5	134.1	-13.0	71.2
	MAIN INDUSTRIAL GROUPINGS					
1	Energy	274.1	351.6	169.7	-22.0	107.2
2	Intermediate goods	158.1	151.1	113.5	4.6	33.1
3	Capital goods	168.9	149.0	96.8	13.4	53.9
4	Consumer Durables	61.6	51.0	66.0	20.9	-22.8
5	Consumer Non-Durables	120.1	126.1	104.9	-4.8	20.3

* Provisional data

Note:

1. The indices are calculated with infinite decimal figures and are rounded up to one decimal figure when published.
2. Percentage changes are calculated on the basis of indices with infinite decimal figures and are rounded up to one decimal figure when published.

Table 6: Evolution of the Turnover Index in Industry (Total Market)**Base year: 2005=100.0**

Year-month	Overall Index (Total Market)		Turnover Index in Industry for the Domestic Market		Turnover Index in Industry for the Non - Domestic Market	
	Index	Annual rate of change (%)	Index	Annual rate of change (%)	Index	Annual rate of change (%)
2011 VII	127.2	20.4	102.6	4.3	200.6	50.9
VIII	106.2	3.1	91.4	1.5	150.7	1.9
IX	110.3	19.9	91.3	5.1	165.7	47.3
X	105.2	-8.2	85.3	-16.2	164.3	3.6
XI	109.0	0.4	95.2	0.0	147.0	-5.5
XII	120.4	2.4	104.5	1.6	165.6	-2.0
2012 I	109.9	13.0	88.4	3.4	175.3	33.3
II	105.6	7.0	85.4	-4.7	166.3	34.7
III	117.7	-4.6	92.2	-7.6	194.9	-0.1
IV	124.7	12.2	99.6	8.0	201.3	20.2
V	113.9	-3.8	86.3	-4.8	197.1	-2.7
VI	115.1	1.1	89.6	-3.1	192.0	7.6
VII*	118.0	-7.3	95.4	-7.0	184.6	-8.0

*Provisional data

Table 7: Evolution of the Turnover Index in Industry for the Non – Domestic Market**Base year: 2005=100.0**

Year-month	Overall Index (Non - Domestic Market)		Turnover Index in Industry for Eurozone Countries		Turnover Index in Industry for Non - Eurozone Countries	
	Index	Annual rate of change (%)	Index	Annual rate of change (%)	Index	Annual rate of change (%)
2011 VII	200.6	50.9	150.9	14.3	232.3	70.1
VIII	150.7	1.9	133.5	16.8	162.6	-3.8
IX	165.7	47.3	144.7	43.1	181.0	50.5
X	164.3	3.6	158.8	4.3	169.0	1.9
XI	147.0	-5.5	150.2	1.6	147.0	-8.9
XII	165.6	-2.0	157.6	5.7	175.5	-2.7
2012 I	175.3	33.3	125.3	7.6	205.1	45.7
II	166.3	34.7	132.2	-13.3	191.1	74.3
III	194.9	-0.1	164.0	1.4	217.3	-0.6
IV	201.3	20.2	137.7	-15.1	241.1	39.8
V	197.1	-2.7	171.7	3.7	215.0	-5.6
VI	192.0	7.6	159.6	0.1	214.5	11.6
VII*	184.6	-8.0	155.6	3.1	202.8	-12.7

*Provisional data

Note: 1. The indices are calculated with infinite decimal figures and are rounded up to one decimal figure when published.
2. Percentage changes are calculated on the basis of indices with infinite decimal figures and are rounded up to one decimal figure when published.

Table 8: Average indices and rates of change (%) of the 12-month periods of Turnover Index in Industry (Total Market)

Base year: 2005=100.0

Branch code	Branch name	Average Indices of 12-month periods			Rate of change (%) 2012/2011	Rate of change (%) 2011/2010
		Aug. 2011- July 2012*	Aug. 2010- July 2011	Aug. 2009- July 2010		
	OVERALL INDEX	113.0	110.5	100.9	2.3	9.5
B	MINING AND QUARRYING	89.3	99.2	101.3	-9.9	-2.1
05	Mining of coal and lignite	86.2	142.9	159.7	-39.7	-10.5
06	Extraction of crude petroleum and natural gas	159.2	175.1	158.7	-9.1	10.3
07	Mining of metal ores	82.0	77.2	77.0	6.2	0.2
08	Other mining and quarrying products	86.0	95.4	98.5	-9.9	-3.1
C	MANUFACTURING	111.5	108.9	99.2	2.5	9.7
10	Food	107.1	108.9	109.2	-1.7	-0.3
11	Beverages	92.0	102.1	107.3	-9.9	-4.8
12	Tobacco products	78.7	76.1	89.4	3.4	-14.9
13	Textiles	36.4	47.5	53.2	-23.5	-10.7
14	Wearing apparel	43.0	53.1	64.2	-19.0	-17.4
15	Leather and related products	33.3	54.4	75.6	-38.8	-28.1
16	Wood and cork	41.3	51.7	64.3	-20.1	-19.5
17	Paper and paper products	103.7	112.3	112.6	-7.6	-0.2
18	Printing and recording services	49.8	67.9	87.6	-26.6	-22.5
19	Coke and refined petroleum products	187.9	159.6	123.2	17.7	29.6
20	Chemicals and chemical products	87.2	94.4	87.6	-7.6	7.8
21	Basic pharmaceutical products and pharmaceutical preparations	124.3	130.2	137.6	-4.5	-5.4
22	Rubber and plastic products	95.6	99.3	94.5	-3.8	5.1
23	Other non-metallic mineral products	40.0	57.8	81.4	-30.8	-29.0
24	Basic metals	107.8	113.7	87.6	-5.1	29.7
25	Fabricated metal products	78.3	83.0	84.5	-5.7	-1.8
26	Computers, electronic and optical products	34.3	40.0	45.7	-14.3	-12.4
27	Electrical equipment	90.5	88.1	84.0	2.7	4.9
28	Machinery and equipment n. e. c.	72.1	89.9	83.1	-19.7	8.2
29	Motor vehicles, trailers and semi-trailers	48.5	59.6	68.7	-18.6	-13.2
30	Other transport equipment	38.8	45.8	53.9	-15.3	-15.1
31	Furniture	46.4	65.5	84.0	-29.1	-22.0
32	Other manufactured goods	65.8	74.2	80.2	-11.4	-7.4
33	Repair and installation services of machinery and equipment	52.0	52.5	59.4	-0.8	-11.6
	MAIN INDUSTRIAL GROUPINGS					
1	Energy	187.5	159.6	123.4	17.5	29.4
2	Intermediate goods	87.3	95.2	89.7	-8.3	6.2
3	Capital goods	54.3	60.1	64.2	-9.8	-6.3
4	Consumer Durables	52.4	62.3	73.5	-15.9	-15.3
5	Consumer Non-Durables	89.7	95.1	100.9	-5.7	-5.8

*Provisional data

Note: 1. The indices are calculated with infinite decimal figures and are rounded up to one decimal figure when published.
2. Percentage changes are calculated on the basis of indices with infinite decimal figures and are rounded up to one decimal figure when published.

METHODOLOGICAL NOTES

Generally	The Turnover Index is being compiled since 2006.
Purpose of the index	The purpose of this index is to measure the monthly activity of the industrial sector in terms of value. Turnover comprises the totals invoiced (without VAT) by the observation units during the reference period and corresponds to the market sales of goods or services supplied to third parties. The purposes and the characteristics of the Turnover Index apply, as well, to the indices for the distinction between domestic and non-domestic turnover.
Legal basis	The compilation and publication of the Turnover Index is based on the framework of requirements of the Council Regulation (EC) No 1165/98 concerning short-term statistics (STS-R), as well as the amendment Regulation (EC) No 1158/05 of the European Parliament and Council, amending the Council Regulation (EC) No 1165/98. Furthermore, this index is governed by the Regulation (EEC) No.1893/2006 of the European Parliament and of the Council, by the Commission Regulation (EEC) No.656/2007 and by the Regulation (EEC) No.451/2008 of the Council.
Reference period	Month
Base year	2005=100.0.
Revision	The last revision of the Turnover Index in Industry with base year 2005=100.0 is done in the framework of the Short – Term Statistics (STS) Council Regulation (EC) No 1165/98 concerning short-term statistics. According to this regulation the index in question is updated every five years, in years ending in 0 or 5.
Statistical classifications	At the level of categories of economic activities the new Eurostat classification NACE Rev. 2 was used (Regulation 1893/2006), while at the level of main industrial groups, the allocation of two-digit and three-digit NACE Rev. 2 headings to categories of aggregate classification was used, in accordance with the Commission Regulation 656/2007. At product level, the new Eurostat classification CPA 2008 was used, according to the Council Regulation 451/2008.
Geographical coverage	The Index covers the whole country.
Coverage of economic activities	The Turnover Index in Industry covers the whole country and is compiled for all activities listed in Sections C (mining and quarrying) and D (manufacturing) of the NACE Rev.2 classification.
Computation of the Index	The Turnover Index in Industry is a fixed base index. This index is calculated initially at the four-digit level of economic activity and subsequently, with the implementation of appropriate weighting coefficients, the index is calculated at higher levels (three-level, two-level and one-level of economic activity) or at the level of Main Industrial Groupings (MIGs).
Publication of data	The Turnover Index with base year 2005=100.0 is being released since April 2009 with January 2009 as first reference month. Data with base year 2005=100.0 are available from January 2000 onwards.
References	More information about the methodology concerning the compilation and calculation of the index and for the time series is available on the Hellenic Statistical Authority (ELSTAT) website (www.statistics.gr).