



HELLENIC REPUBLIC



HELLENIC STATISTICAL AUTHORITY

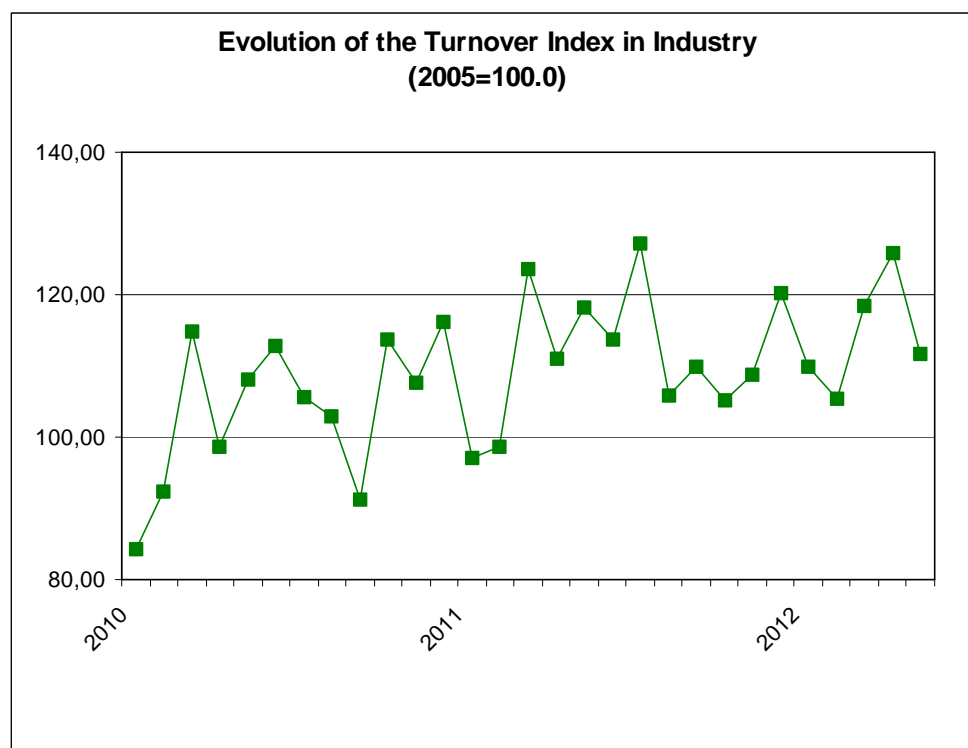
Piraeus, 20 July 2012

PRESS RELEASE

TURNOVER INDEX IN INDUSTRY: May 2012

The Turnover Index in Industry (both domestic and non-domestic market) in May 2012 compared with May 2011 recorded a decline of 5.6%. In May 2011, the annual rate of change of the Turnover Index in Industry was 9.7%.

The average Turnover Index in Industry for the 12-month period from June 2011 to May 2012, as compared to the 12-month period from June 2010 to May 2011, increased by 4.7%. In May 2011, the corresponding average rate of change of the Turnover Index in Industry was 7.5%.



Information:

Economic and Short-Term
Indicators Division

Production Indices Section

Diamantaki Aikaterini
Tel: 0030 210 4852122
Fax: 0030 210 4852738

The decrease of the Turnover Index in Industry by 5.6% in May 2012, compared with May 2011, was due to the annual changes as following:

- by Industrial Sections

- Mining and quarrying turnover decreased by 13.6%.
- Manufacturing turnover decreased by 5.5%.

In addition, the decrease of the Turnover Index in Industry by 5.6% in May 2012, compared with May 2011, was due to the annual changes of the indices of the markets as following:

- The Turnover Index in Industry for the domestic market decreased by 5.7%.
- The Turnover Index in Industry for the non-domestic market decreased by 6.0%.

The decrease of the Turnover Index in Industry for the non-domestic market by 6.0% in May 2012, compared with May 2011, was due to the annual changes as following:

- The Turnover Index in Industry for the Eurozone countries decreased by 1.8%.
- The Turnover Index in Industry for the non-Eurozone countries decreased by 7.5%.

Table 1: Annual rates of change of the Turnover Index in Industry (Total Market)

Base year: 2005=100.0

Branch code	Branch name	May			Rate of change (%)	
		2012*	2011	2010	2012/2011	2011/2010
	OVERALL INDEX	111.7	118.4	107.9	-5.6	9.7
B	MINING AND QUARRYING	82.7	95.8	129.2	-13.6	-25.8
05	Mining of coal and lignite	81.2	113.1	162.8	-28.2	-30.5
06	Extraction of crude petroleum and natural gas	0.0	0.0	451.9	0.0	-100.0
07	Mining of metal ores	84.3	75.5	109.2	11.6	-30.8
08	Other mining and quarrying products	88.4	105.4	108.3	-16.1	-2.7
C	MANUFACTURING	110.4	116.8	105.8	-5.5	10.4
10	Food	117.1	112.3	114.4	4.2	-1.8
11	Beverages	99.2	97.6	120.0	1.6	-18.7
12	Tobacco products	79.2	87.1	81.0	-9.1	7.5
13	Textiles	43.5	53.7	54.4	-18.9	-1.4
14	Wearing apparel	39.4	48.0	51.2	-17.8	-6.4
15	Leather and related products	23.5	51.6	48.3	-54.4	6.7
16	Wood and cork	45.8	56.5	64.0	-18.9	-11.7
17	Paper and paper products	108.9	116.8	117.6	-6.7	-0.7
18	Printing and recording services	49.6	66.0	83.7	-24.8	-21.1
19	Coke and refined petroleum products	170.3	177.5	137.6	-4.1	29.0
20	Chemicals and chemical products	97.8	100.5	102.1	-2.7	-1.6
21	Basic pharmaceutical products and pharmaceutical preparations	131.8	133.2	121.1	-1.0	10.0
22	Rubber and plastic products	108.9	109.1	103.3	-0.3	5.6
23	Other non-metallic mineral products	49.9	57.6	84.6	-13.5	-31.9
24	Basic metals	111.2	135.4	101.6	-17.8	33.3
25	Fabricated metal products	76.1	81.9	83.5	-7.1	-1.9
26	Computers, electronic and optical products	46.7	36.8	45.8	27.0	-19.6
27	Electrical equipment	75.7	87.5	88.4	-13.5	-1.0
28	Machinery and equipment n. e. c.	78.9	99.8	89.4	-21.0	11.7
29	Motor vehicles, trailers and semi-trailers	39.9	35.6	50.8	12.0	-29.9
30	Other transport equipment	29.7	32.2	44.0	-7.8	-26.9
31	Furniture	43.7	63.9	72.0	-31.7	-11.2
32	Other manufactured goods	76.3	71.6	83.6	6.7	-14.4
33	Repair and installation services of machinery and equipment	46.6	44.8	47.9	3.8	-6.4
	MAIN INDUSTRIAL GROUPINGS					
1	Energy	169.5	176.8	138.6	-4.1	27.5
2	Intermediate goods	93.0	104.5	97.7	-11.0	6.9
3	Capital goods	49.7	53.2	58.3	-6.5	-8.7
4	Consumer Durables	54.4	65.6	69.9	-17.1	-6.1
5	Consumer Non-Durables	96.6	96.7	103.0	-0.1	-6.2

* Provisional data

Note:

1. The indices are calculated with infinite decimal figures and are rounded up to one decimal figure when published.
2. Percentage changes are calculated on the basis of indices with infinite decimal figures and are rounded up to one decimal figure when published.

Table 2: Annual rates of change of the Turnover Index in Industry for the Domestic Market

Base year: 2005=100.0

Branch code	Branch name	May			Rate of change (%)	
		2012*	2011	2010	2012/2011	2011/2010
	OVERALL INDEX	85.7	90.8	93.0	-5.7	-2.3
B	MINING AND QUARRYING	55.4	67.8	121.2	-18.3	-44.0
05	Mining of coal and lignite	81.2	113.1	162.8	-28.2	-30.5
06	Extraction of crude petroleum and natural gas	0.0	0.0	451.9	0.0	-100.0
07	Mining of metal ores	106.1	100.8	85.1	5.3	18.5
08	Other mining and quarrying products	51.7	66.3	87.5	-22.1	-24.2
C	MANUFACTURING	84.9	89.8	91.2	-5.5	-1.5
10	Food	112.2	108.5	112.1	3.4	-3.3
11	Beverages	97.3	96.9	120.6	0.4	-19.7
12	Tobacco products	50.7	68.8	70.9	-26.4	-2.9
13	Textiles	34.5	44.5	47.8	-22.5	-6.9
14	Wearing apparel	33.9	43.5	49.9	-22.1	-12.8
15	Leather and related products	25.8	46.0	46.5	-43.8	-1.1
16	Wood and cork	38.4	48.9	61.4	-21.3	-20.4
17	Paper and paper products	103.2	111.9	114.7	-7.8	-2.4
18	Printing and recording services	48.5	65.2	81.7	-25.7	-20.1
19	Coke and refined petroleum products	119.9	120.0	98.3	-0.1	22.1
20	Chemicals and chemical products	80.0	79.4	85.6	0.8	-7.3
21	Basic pharmaceutical products and pharmaceutical preparations	94.7	95.1	91.3	-0.4	4.2
22	Rubber and plastic products	75.7	89.9	89.1	-15.8	0.9
23	Other non-metallic mineral products	37.2	55.6	82.8	-33.2	-32.8
24	Basic metals	63.2	80.1	72.7	-21.1	10.2
25	Fabricated metal products	56.4	63.0	77.2	-10.5	-18.4
26	Computers, electronic and optical products	11.9	11.1	31.8	7.6	-65.3
27	Electrical equipment	55.6	90.6	81.5	-38.5	11.1
28	Machinery and equipment n. e. c.	49.7	64.0	74.4	-22.3	-13.9
29	Motor vehicles, trailers and semi-trailers	25.3	18.8	43.7	34.0	-56.9
30	Other transport equipment	7.2	7.8	125.7	-7.7	-93.8
31	Furniture	41.0	60.2	69.8	-32.0	-13.7
32	Other manufactured goods	59.6	69.8	69.4	-14.7	0.6
33	Repair and installation services of machinery and equipment	46.6	44.8	47.9	3.8	-6.4
	MAIN INDUSTRIAL GROUPINGS					
1	Energy	119.3	119.5	100.0	-0.2	19.5
2	Intermediate goods	67.2	80.7	85.1	-16.7	-5.2
3	Capital goods	35.5	36.9	68.1	-3.9	-45.8
4	Consumer Durables	50.6	66.3	68.5	-23.7	-3.2
5	Consumer Non-Durables	89.8	90.6	100.4	-0.9	-9.8

* Provisional data

Note:

1. The indices are calculated with infinite decimal figures and are rounded up to one decimal figure when published.
2. Percentage changes are calculated on the basis of indices with infinite decimal figures and are rounded up to one decimal figure when published.

Table 3: Annual rates of change of the Turnover Index in Industry for the Non - Domestic Market

Base year: 2005=100.0

Branch code	Branch name	May			Rate of change (%)	
		2012*	2011	2010	2012/2011	2011/2010
	OVERALL INDEX	190.3	202.4	158.3	-6.0	27.8
B	MINING AND QUARRYING	122.7	145.4	136.4	-15.6	6.6
05	Mining of coal and lignite	0.0	0.0	0.0	0.0	0.0
06	Extraction of crude petroleum and natural gas	0.0	0.0	0.0	0.0	0.0
07	Mining of metal ores	64.7	52.9	130.7	22.3	-59.5
08	Other mining and quarrying products	138.8	171.2	137.9	-18.9	24.1
C	MANUFACTURING	187.6	199.2	155.3	-5.8	28.2
10	Food	138.3	129.1	124.2	7.1	3.9
11	Beverages	123.1	104.9	107.8	17.3	-2.6
12	Tobacco products	154.9	135.5	107.6	14.3	25.9
13	Textiles	55.1	65.9	62.8	-16.3	4.9
14	Wearing apparel	44.9	52.9	53.3	-15.1	-0.8
15	Leather and related products	2.5	101.1	64.3	-97.5	57.3
16	Wood and cork	95.0	108.0	81.2	-12.0	33.0
17	Paper and paper products	156.7	157.0	142.1	-0.2	10.5
18	Printing and recording services	156.2	136.5	278.0	14.5	-50.9
19	Coke and refined petroleum products	334.0	364.2	265.2	-8.3	37.4
20	Chemicals and chemical products	138.5	148.8	140.1	-6.9	6.2
21	Basic pharmaceutical products and pharmaceutical preparations	317.7	324.0	270.4	-2.0	19.8
22	Rubber and plastic products	175.0	150.9	134.0	16.0	12.6
23	Other non-metallic mineral products	135.2	68.1	96.1	98.4	-29.1
24	Basic metals	159.9	191.2	130.8	-16.4	46.1
25	Fabricated metal products	150.8	150.0	109.2	0.5	37.3
26	Computers, electronic and optical products	66.6	52.1	51.7	27.8	0.9
27	Electrical equipment	97.1	81.9	94.7	18.6	-13.5
28	Machinery and equipment n. e. c.	120.1	150.5	106.9	-20.2	40.8
29	Motor vehicles, trailers and semi-trailers	112.3	126.3	75.3	-11.1	67.7
30	Other transport equipment	49.5	54.9	63.4	-9.7	-13.4
31	Furniture	113.3	169.5	125.8	-33.2	34.7
32	Other manufactured goods	137.9	78.0	130.4	76.8	-40.2
33	Repair and installation services of machinery and equipment	0.0	0.0	0.0	0.0	0.0
	MAIN INDUSTRIAL GROUPINGS					
1	Energy	334.0	364.2	265.2	-8.3	37.4
2	Intermediate goods	145.8	153.9	123.5	-5.2	24.6
3	Capital goods	98.3	110.6	77.9	-11.1	42.0
4	Consumer Durables	67.3	67.4	73.9	-0.2	-8.7
5	Consumer Non-Durables	121.2	119.0	111.1	1.8	7.1

* Provisional data

Note:

1. The indices are calculated with infinite decimal figures and are rounded up to one decimal figure when published.
2. Percentage changes are calculated on the basis of indices with infinite decimal figures and are rounded up to one decimal figure when published.

Table 4: Annual rates of change of the Turnover Index in Industry for the Eurozone Countries

Base year: 2005=100.0

Branch code	Branch name	2012*	May 2011	2010	Rate of change (%)	
					2012/2011	2011/2010
	OVERALL INDEX	162.6	165.5	136.8	-1.8	21.0
	INDUSTRIAL SECTIONS					
B	MINING AND QUARRYING	119.8	167.0	152.4	-28.3	9.5
C	MANUFACTURING	159.3	160.9	132.6	-1.0	21.3
	MAIN INDUSTRIAL GROUPINGS					
1	Energy	1731.4	743.9	1037.4	132.8	-28.3
2	Intermediate goods	142.7	174.7	125.7	-18.3	38.9
3	Capital goods	75.0	94.2	44.3	-20.4	112.9
4	Consumer Durables	110.6	138.0	93.6	-19.9	47.5
5	Consumer Non-Durables	107.4	116.4	112.9	-7.7	3.1

* Provisional data

Table 5: Annual rates of change of the Turnover Index in Industry for the Non - Eurozone Countries

Base year: 2005=100.0

Branch code	Branch name	2012*	May 2011	2010	Rate of change (%)	
					2012/2011	2011/2010
	OVERALL INDEX	210.5	227.6	172.7	-7.5	31.8
	INDUSTRIAL SECTIONS					
B	MINING AND QUARRYING	125.4	127.1	122.6	-1.3	3.7
C	MANUFACTURING	208.2	225.2	170.4	-7.6	32.2
	MAIN INDUSTRIAL GROUPINGS					
1	Energy	292.0	352.8	242.0	-17.2	45.8
2	Intermediate goods	154.7	143.1	125.0	8.1	14.4
3	Capital goods	126.6	128.8	118.5	-1.7	8.7
4	Consumer Durables	57.8	44.0	100.8	31.4	-56.4
5	Consumer Non-Durables	140.7	118.4	106.8	18.8	10.9

* Provisional data

Note:

1. The indices are calculated with infinite decimal figures and are rounded up to one decimal figure when published.
2. Percentage changes are calculated on the basis of indices with infinite decimal figures and are rounded up to one decimal figure when published.

Table 6: Evolution of the Turnover Index in Industry (Total Market)**Base year: 2005=100.0**

Year-month	Overall Index (Total Market)		Turnover Index in Industry for the Domestic Market		Turnover Index in Industry for the Non - Domestic Market	
	Index	Annual rate of change (%)	Index	Annual rate of change (%)	Index	Annual rate of change (%)
2011 V	118.4	9.7	90.8	-2.3	202.4	27.8
VI	113.8	1.0	92.4	-8.7	178.1	15.4
VII	127.3	20.5	102.8	4.5	200.6	50.9
VIII	106.1	3.0	91.3	1.4	150.6	1.8
IX	110.2	19.8	91.3	5.1	165.5	47.1
X	105.4	-8.1	85.6	-16.0	164.2	3.5
XI	109.0	0.5	95.5	0.3	146.8	-5.6
XII	120.8	2.8	105.1	2.2	166.1	-1.7
2012 I	109.9	13.0	88.4	3.5	175.2	33.3
II	105.5	6.9	85.4	-4.8	166.1	34.6
III	118.4	-4.3	92.3	-7.4	197.1	0.6
IV	125.8	13.3	100.7	9.3	202.6	21.1
V*	111.7	-5.6	85.7	-5.7	190.3	-6.0

*Provisional data

Table 7: Evolution of the Turnover Index in Industry for the Non – Domestic Market**Base year: 2005=100.0**

Year-month	Overall Index (Non - Domestic Market)		Turnover Index in Industry for Eurozone Countries		Turnover Index in Industry for Non - Eurozone Countries	
	Index	Annual rate of change (%)	Index	Annual rate of change (%)	Index	Annual rate of change (%)
2011 V	202.4	27.8	165.5	21.0	227.6	31.8
VI	178.1	15.4	159.4	22.6	191.8	10.6
VII	200.6	50.9	151.3	14.7	232.1	69.9
VIII	150.6	1.8	133.4	16.7	162.4	-3.9
IX	165.5	47.1	144.6	43.0	180.8	50.3
X	164.2	3.5	159.7	4.9	168.4	1.6
XI	146.8	-5.6	149.4	1.1	147.3	-8.7
XII	166.1	-1.7	157.4	5.6	176.5	-2.2
2012 I	175.2	33.3	125.4	7.6	205.0	45.7
II	166.1	34.6	132.7	-13.0	190.8	74.2
III	197.1	0.6	164.7	1.9	220.6	0.3
IV	202.6	21.1	138.1	-14.9	243.2	41.0
V*	190.3	-6.0	162.6	-1.8	210.5	-7.5

*Provisional data

Note: 1. The indices are calculated with infinite decimal figures and are rounded up to one decimal figure when published.
2. Percentage changes are calculated on the basis of indices with infinite decimal figures and are rounded up to one decimal figure when published.

Table 8: Average indices and rates of change (%) of the 12-month periods of Turnover Index in Industry (Total Market)

Base year: 2005=100.0

Branch code	Branch name	Average Indices of 12-month periods			Rate of change (%) 2012/2011	Rate of change (%) 2011/2010
		June 2011- May 2012*	June 2010- May 2011	June 2009- May 2010		
	OVERALL INDEX	113.7	108.6	101.0	4.7	7.5
B	MINING AND QUARRYING	93.1	99.5	101.6	-6.4	-2.1
05	Mining of coal and lignite	111.0	140.1	164.5	-20.8	-14.8
06	Extraction of crude petroleum and natural gas	183.6	159.1	152.8	15.4	4.1
07	Mining of metal ores	83.3	74.4	77.8	11.9	-4.4
08	Other mining and quarrying products	87.5	97.7	98.9	-10.4	-1.2
C	MANUFACTURING	112.2	107.0	99.4	4.8	7.7
10	Food	107.8	108.8	110.8	-0.9	-1.8
11	Beverages	92.6	102.4	112.0	-9.6	-8.6
12	Tobacco products	80.4	74.6	94.1	7.8	-20.8
13	Textiles	38.6	49.3	55.0	-21.7	-10.5
14	Wearing apparel	45.0	53.6	66.0	-16.0	-18.8
15	Leather and related products	38.2	54.8	81.2	-30.2	-32.6
16	Wood and cork	43.6	54.7	66.1	-20.4	-17.2
17	Paper and paper products	104.2	112.0	114.0	-6.9	-1.7
18	Printing and recording services	51.5	71.4	90.4	-27.9	-21.0
19	Coke and refined petroleum products	187.5	152.4	119.3	23.0	27.8
20	Chemicals and chemical products	89.2	93.3	87.7	-4.4	6.4
21	Basic pharmaceutical products and pharmaceutical preparations	126.2	132.0	139.5	-4.4	-5.4
22	Rubber and plastic products	96.1	98.8	95.5	-2.7	3.4
23	Other non-metallic mineral products	41.6	62.4	85.5	-33.4	-27.0
24	Basic metals	109.7	110.4	84.9	-0.7	30.0
25	Fabricated metal products	79.7	82.6	86.9	-3.5	-4.9
26	Computers, electronic and optical products	35.8	41.1	48.3	-13.0	-14.9
27	Electrical equipment	85.9	89.5	84.5	-4.1	5.9
28	Machinery and equipment n. e. c.	74.6	88.5	88.9	-15.7	-0.4
29	Motor vehicles, trailers and semi-trailers	49.7	62.8	69.4	-20.8	-9.5
30	Other transport equipment	32.8	44.0	60.7	-25.4	-27.5
31	Furniture	50.3	68.3	86.7	-26.4	-21.3
32	Other manufactured goods	68.3	75.3	81.7	-9.3	-7.8
33	Repair and installation services of machinery and equipment	49.9	52.2	61.9	-4.2	-15.7
	MAIN INDUSTRIAL GROUPINGS					
1	Energy	187.3	152.4	119.5	22.9	27.5
2	Intermediate goods	88.6	94.9	90.1	-6.6	5.3
3	Capital goods	53.7	59.8	67.9	-10.2	-12.0
4	Consumer Durables	54.7	64.3	75.5	-15.1	-14.8
5	Consumer Non-Durables	90.6	95.7	103.3	-5.4	-7.4

*Provisional data

Note: 1. The indices are calculated with infinite decimal figures and are rounded up to one decimal figure when published.
2. Percentage changes are calculated on the basis of indices with infinite decimal figures and are rounded up to one decimal figure when published.

METHODOLOGICAL NOTES

Generally	The Turnover Index is being compiled since 2006.
Purpose of the index	The purpose of this index is to measure the monthly activity of the industrial sector in terms of value. Turnover comprises the totals invoiced (without VAT) by the observation units during the reference period and corresponds to the market sales of goods or services supplied to third parties. The purposes and the characteristics of the Turnover Index apply, as well, to the indices for the distinction between domestic and non-domestic turnover.
Legal basis	The compilation and publication of the Turnover Index is based on the framework of requirements of the Council Regulation (EC) No 1165/98 concerning short-term statistics (STS-R), as well as the amendment Regulation (EC) No 1158/05 of the European Parliament and Council, amending the Council Regulation (EC) No 1165/98. Furthermore, this index is governed by the Regulation (EEC) No.1893/2006 of the European Parliament and of the Council, by the Commission Regulation (EEC) No.656/2007 and by the Regulation (EEC) No.451/2008 of the Council.
Reference period	Month
Base year	2005=100.0.
Revision	The last revision of the Turnover Index in Industry with base year 2005=100.0 is done in the framework of the Short – Term Statistics (STS) Council Regulation (EC) No 1165/98 concerning short-term statistics. According to this regulation the index in question is updated every five years, in years ending in 0 or 5.
Statistical classifications	At the level of categories of economic activities the new Eurostat classification NACE Rev. 2 was used (Regulation 1893/2006), while at the level of main industrial groups, the allocation of two-digit and three-digit NACE Rev. 2 headings to categories of aggregate classification was used, in accordance with the Commission Regulation 656/2007. At product level, the new Eurostat classification CPA 2008 was used, according to the Council Regulation 451/2008.
Geographical coverage	The Index covers the whole country.
Coverage of economic activities	The Turnover Index in Industry covers the whole country and is compiled for all activities listed in Sections C (mining and quarrying) and D (manufacturing) of the NACE Rev.2 classification.
Computation of the Index	The Turnover Index in Industry is a fixed base index. This index is calculated initially at the four-digit level of economic activity and subsequently, with the implementation of appropriate weighting coefficients, the index is calculated at higher levels (three-level, two-level and one-level of economic activity) or at the level of Main Industrial Groupings (MIGs).
Publication of data	The Turnover Index with base year 2005=100.0 is being released since April 2009 with January 2009 as first reference month. Data with base year 2005=100.0 are available from January 2000 onwards.
References	More information about the methodology concerning the compilation and calculation of the index and for the time series is available on the Hellenic Statistical Authority (ELSTAT) website (www.statistics.gr).