



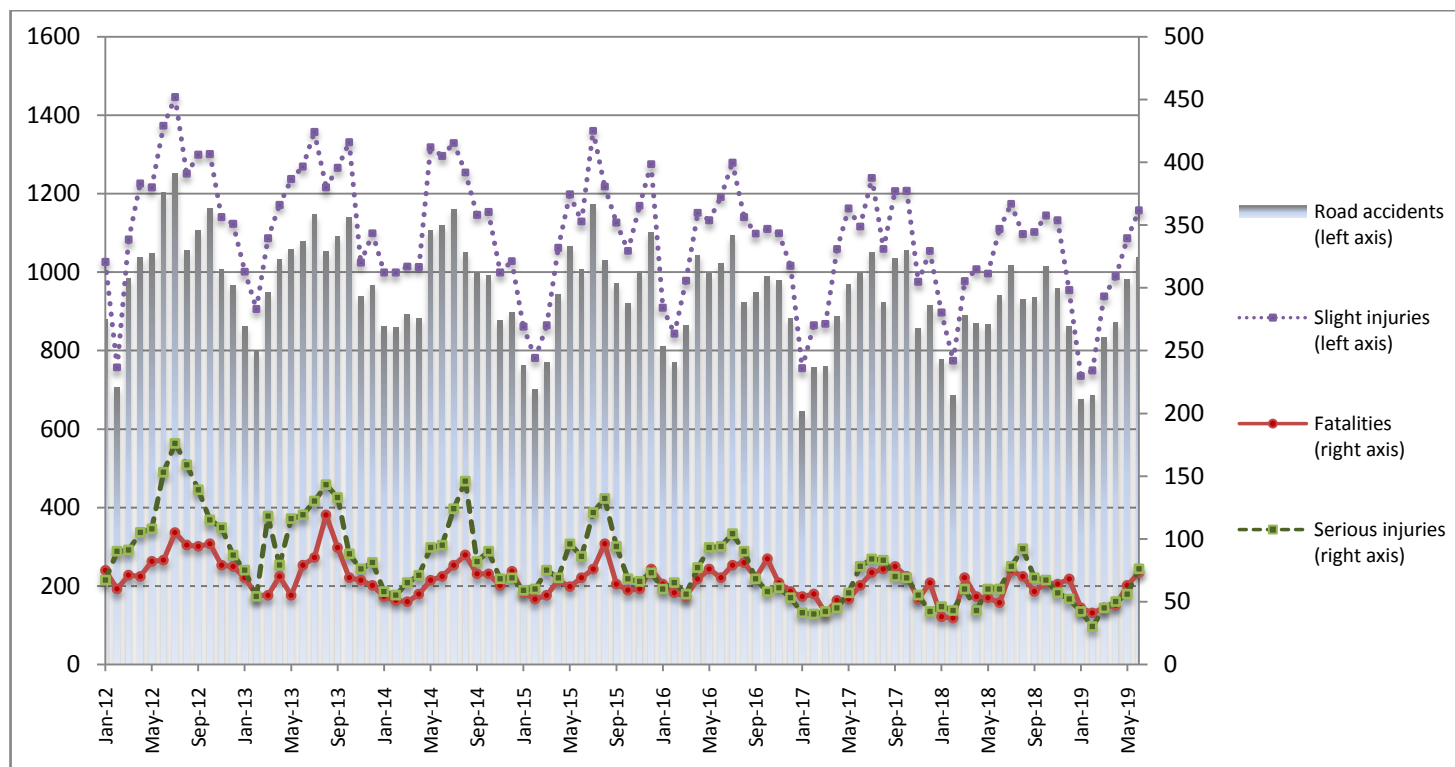
PRESS RELEASE

ROAD TRAFFIC ACCIDENTS: June 2019

The Hellenic Statistical Authority (ELSTAT) announces provisional¹ data on Road Traffic Accidents for June 2019. In particular, the road traffic accidents which occurred in Greece, resulting in death or injury, increased by 10.5% in comparison with the corresponding month of 2018 (1,038 road accidents in June 2019, against 939 road accidents in June 2018).

The casualties of the injury-causing accidents that occurred in June 2019 were as follows: 73 deaths, 76 serious injuries and 1,157 slight injuries. In contrast, in June 2018 the corresponding figures were: 49 deaths, 60 serious injuries and 1,110 slight injuries. Therefore, road accident casualties in June 2019 increased by 49.0% for deaths, by 26.7% for serious injuries and by 4.2% for slight injuries.

**Graph 1: Road traffic accidents and casualties,
January 2012 - June 2019**



Provisional data for the period October 2018 - June 2019

Information:

Sectoral Statistics Division

Justice Statistics Section

D. Athanasopoulou

Tel: +30 213 1352767, Fax : +30 213 1352764

e-mail: d.athanasopoulou@statistics.gr

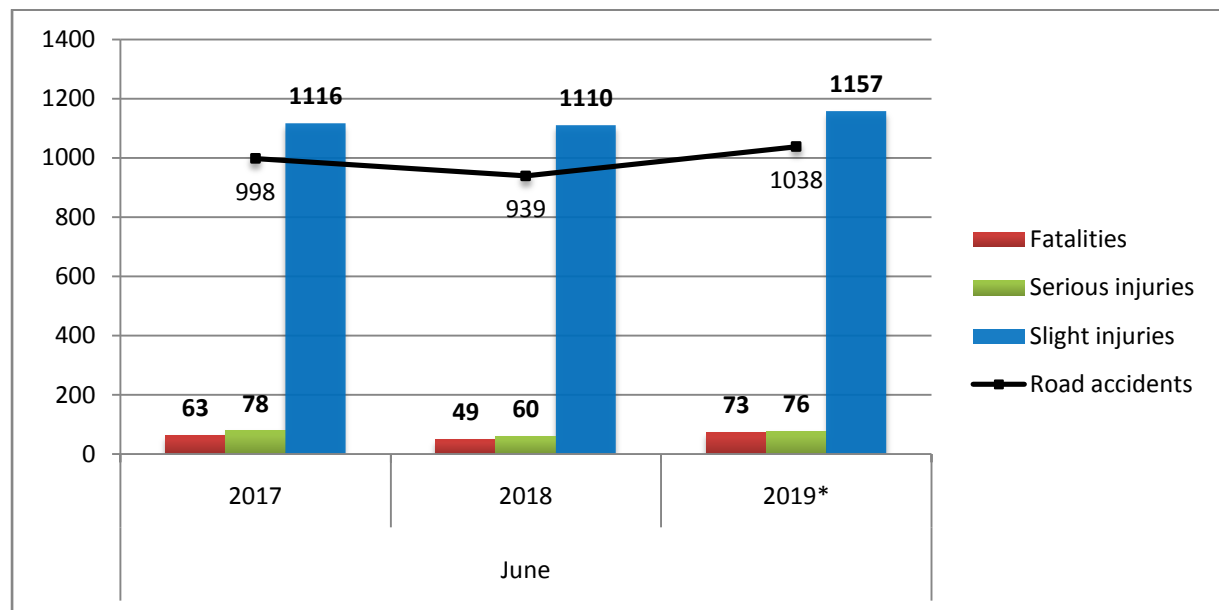
¹ Data for the reference year are provisional until the finalisation of the annual data, which become final 10 months after the end of the reference year. During these 10 months the provisional data are updated on the basis of the data of the Road Accident Forms which are transmitted to ELSTAT by Police Authorities.

Table 1: Road traffic accidents and casualties, June 2017 - 2019*

	June				
	2017	2018	2018/2017 (%)	2019*	2019*/2018 (%)
Road accidents	998	939	-5.9	1,038	10.5
Fatalities	63	49	-22.2	73	49.0
Total injuries	1,194	1,170	-2.0	1,233	5.4
Serious injuries	78	60	-23.1	76	26.7
Slight injuries	1,116	1,110	-0.5	1,157	4.2

* Provisional data

Graph 2: Road traffic accidents and casualties, June 2017 - 2019*



* Provisional data

Table 2: Road traffic accidents and casualties, by region and department, June 2018 and 2019*

Region and department	Road accidents			Fatalities			Serious injuries			Slight injuries		
	2018	2019*	%	2018	2019*	%	2018	2019*	%	2018	2019*	%
Greece Total	939	1,038	10.5	49	73	49.0	60	76	26.7	1,110	1,157	4.2
Anatoliki Makedonia and Thraki (East Macedonia and Thrace)	44	41	-6.8	1	7	600.0	7	5	-28.6	46	44	-4.3
Drama	16	9	-43.8	0	1		3	0		18	12	
Evros	6	9	50.0	1	0		1	1		5	10	
Kavala	11	10	-9.1	0	1		1	3		12	11	
Xanthi	5	7	40.0	0	3		2	0		4	6	
Rodopi	6	6	0.0	0	2		0	1		7	5	
Kentriki Makedonia (Central Macedonia)	152	194	27.6	5	9	80.0	7	7	0.0	196	226	15.3
Imathia	1	2	100.0	0	0		0	0		1	3	
Thessaloniki	117	142	21.4	2	5		5	1		151	166	
Kilkis	7	12	71.4	0	0		1	0		10	20	
Pella	5	10	100.0	0	0		1	2		4	8	
Pieria	5	4	-20.0	3	1		0	1		3	3	
Serres	2	7	250.0	0	2		0	1		3	4	
Chalkidiki	15	17	13.3	0	1		0	2		24	22	
Dytiki Makedonia (West Macedonia)	4	5	25.0	3	2	-33.3	1	3	200.0	0	6	-
Grevena	1	1	0.0	1	0		0	0		0	1	
Kastoria	0	1	-	0	0		0	0		0	1	
Kozani	3	3	0.0	2	2		1	3		0	4	
Florina	0	0	-	0	0		0	0		0	0	
Ipeiros (Epirus)	9	11	22.2	1	3	200.0	0	3	-	14	9	-35.7
Arta	0	2	-	0	1		0	1		0	0	
Thesprotia	3	3	0.0	0	2		0	0		4	2	
Ioannina	3	6	100.0	1	0		0	2		5	7	
Preveza	3	0	-100.0	0	0		0	0		5	0	
Thessalia (Thessaly)	9	27	200.0	1	5	400.0	1	4	300.0	7	31	342.9
Karditsa	2	5	150.0	1	1		0	0		1	11	
Larissa	3	9	200.0	0	1		1	2		2	9	
Magnissia	2	5	150.0	0	2		0	1		2	2	
Trikala	2	8	300.0	0	1		0	1		2	9	
Ionian Nisia (Ionian Islands)	12	25	108.3	1	2	100.0	1	1	0.0	13	32	146.2
Zakynthos	4	7	75.0	0	1		1	0		3	10	
Kerkyra	4	5	25.0	1	0		0	0		5	8	
Kefallinia	2	5	150.0	0	1		0	0		3	6	
Lefkada	2	8	300.0	0	0		0	1		2	8	

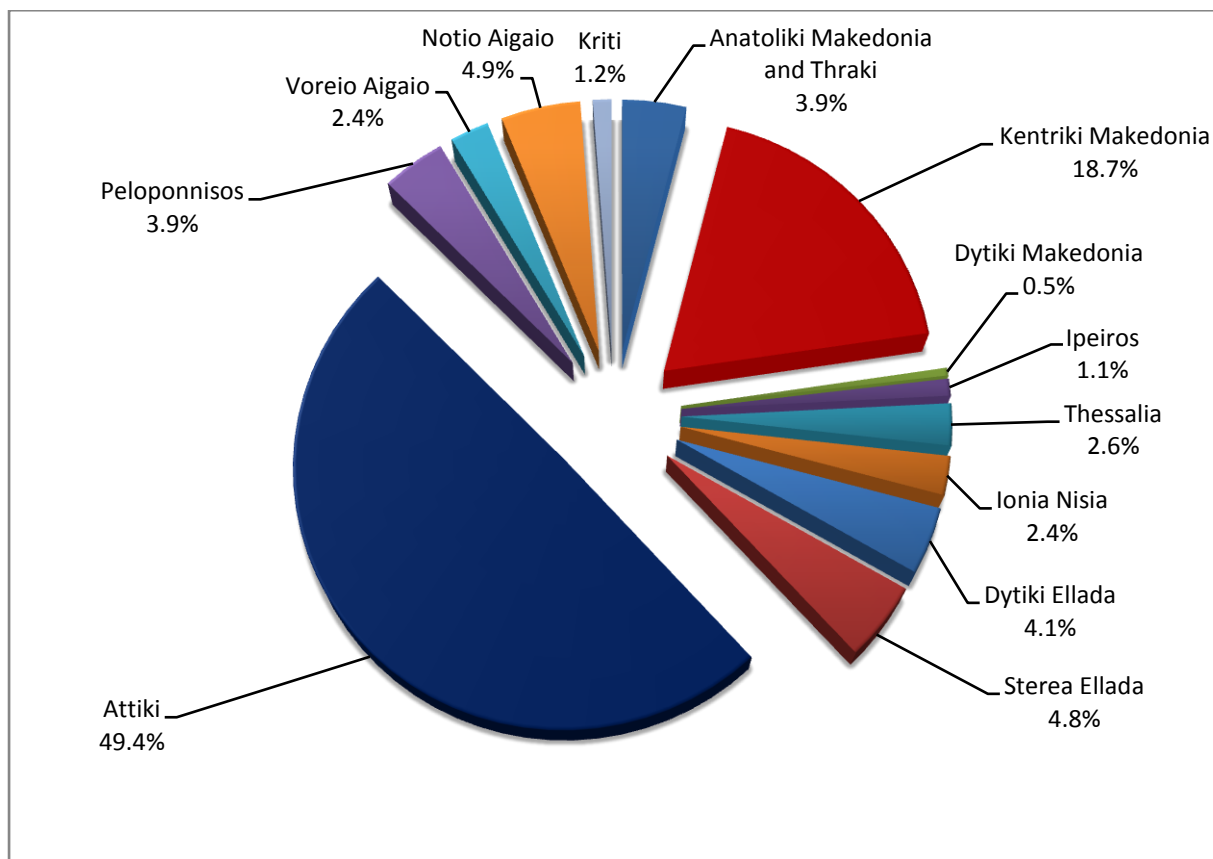
* Provisional data

Table 2: Road traffic accidents and casualties, by region and department, June 2018 and 2019* (Continued)

Region and department	Road accidents			Fatalities			Serious injuries			Slight injuries		
	2018	2019*	%	2018	2019*	%	2018	2019*	%	2018	2019*	%
Dytiki Ellada (West Greece)	54	43	-20.4	7	2	-71.4	3	6	100.0	63	48	-23.8
Etolia & Akarnania	14	20	42.9	1	1		2	3		11	20	
Achaia	33	17	-48.5	4	1		1	2		47	22	
Ilia	7	6	-14.3	2	0		0	1		5	6	
Stereia Ellada	39	50	28.2	3	9	200.0	3	7	133.3	46	56	21.7
Viotia	3	7	133.3	1	1		0	2		3	7	
Evia	18	26	44.4	2	3		2	5		21	30	
Evrytania	3	0	-100.0	0	0		0	0		4	0	
Fthiotida	13	16	23.1	0	5		1	0		15	17	
Fokida	2	1	-50.0	0	0		0	0		3	2	
Attiki (Attica)	480	513	6.9	14	18	28.6	10	19	90.0	575	576	0.2
Peloponnisos (Peloponnese)	43	41	-4.7	3	7	133.3	6	5	-16.7	50	47	-6.0
Argolida	4	11	175.0	0	3		0	0		5	13	
Arkadia	11	6	-45.5	1	0		1	1		12	12	
Korinthia	16	16	0.0	0	2		0	3		21	16	
Lakonia	8	3	-62.5	2	0		3	0		7	3	
Messinia	4	5	25.0	0	2		2	1		5	3	
Voreio Aigaio (North Aegean)	23	25	8.7	2	2	0.0	6	1	-83.3	24	29	20.8
Lesvos	16	13	-18.8	1	0		5	0		17	17	
Samos	3	7	133.3	1	0		0	0		4	9	
Chios	4	5	25.0	0	2		1	1		3	3	
Notio Aigaio (South Aegean)	59	51	-13.6	6	3	-50.0	8	12	50.0	68	47	-30.9
Dodekanissos	31	23	-25.8	4	2		5	4		40	20	
Kyklades	28	28	0.0	2	1		3	8		28	27	
Kriti (Crete)	11	12	9.1	2	4	100.0	7	3	-57.1	8	6	-25.0
Iraklio	8	7	-12.5	2	1		6	2		5	4	
Lassithi	1	3	200.0	0	1		0	0		1	2	
Rethymno	1	0	-100.0	0	0		0	0		1	0	
Chania	1	2	100.0	0	2		1	1		1	0	

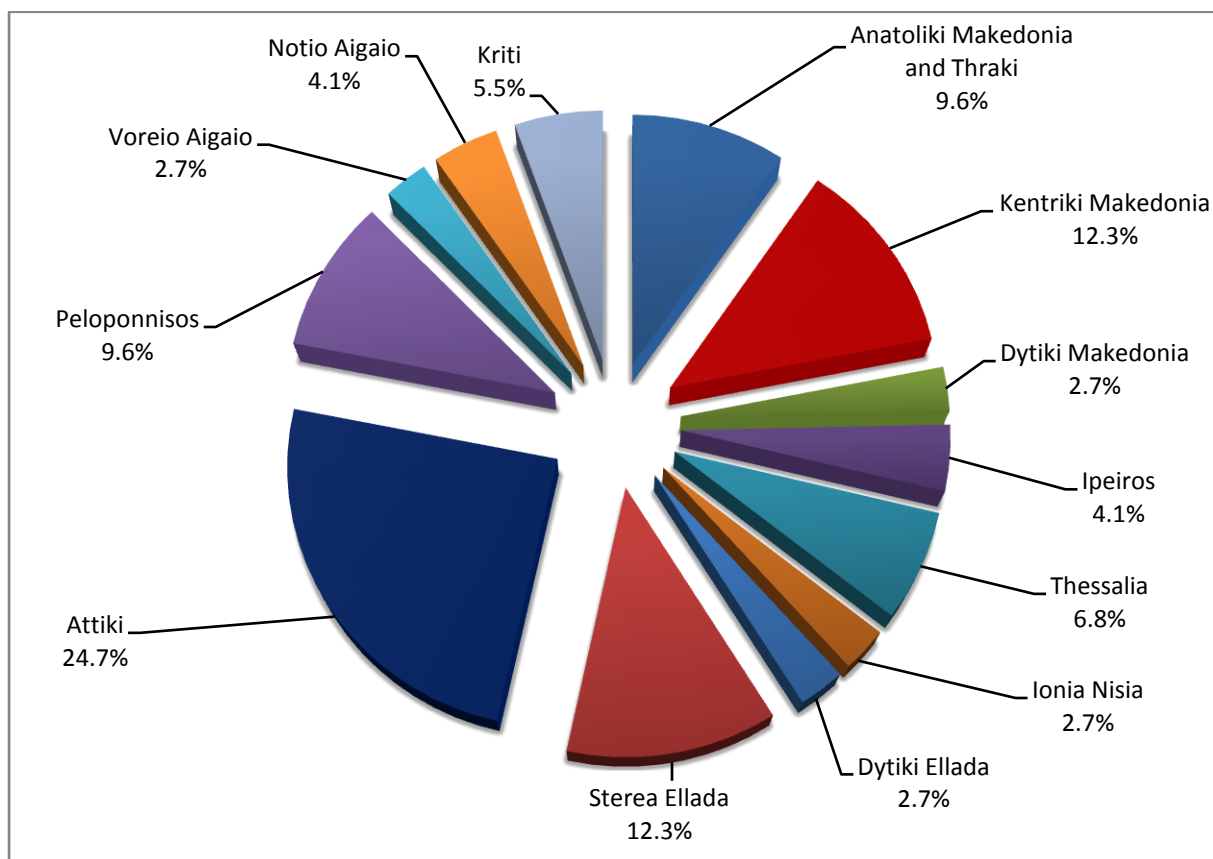
* Provisional data

**Graph 3: Road traffic accidents by region,
June 2019 ***



* Provisional data

**Graph 4: Fatalities by region,
June 2019 ***



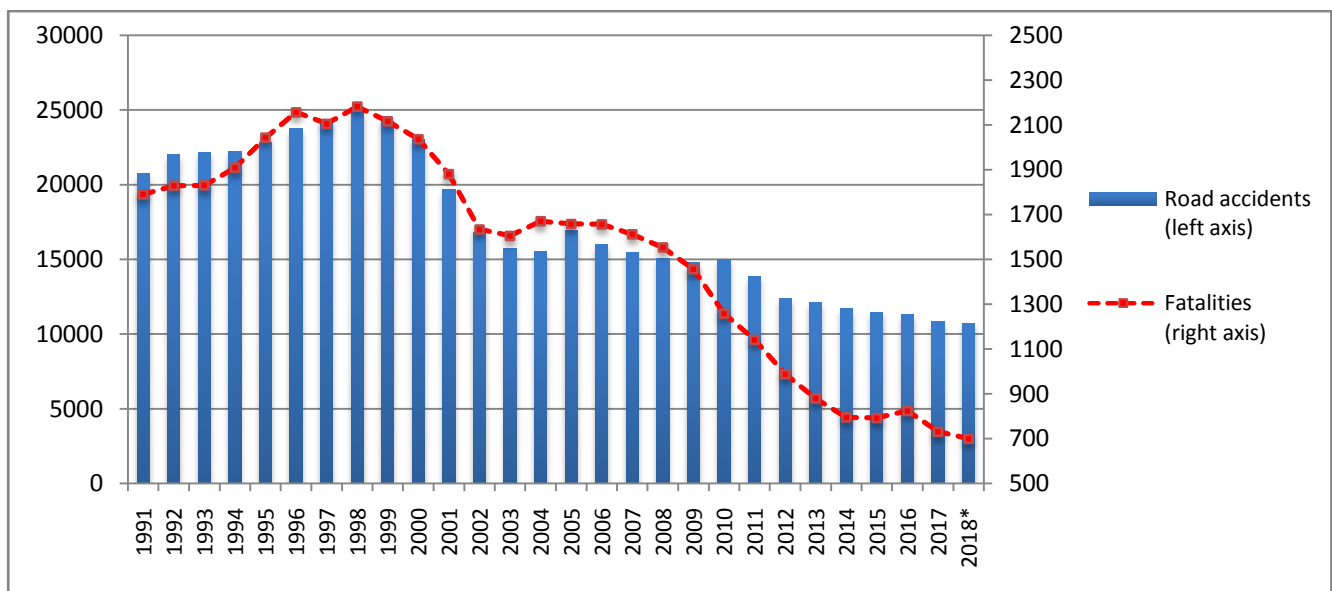
* Provisional data

Table 3: Road traffic accidents and casualties, January - June 2017 - 2019*

	2017		2018		2019 *
	January - June	Total year	January - June	Total year*	January - June
Road accidents	5,013	10,848	5,026	10,743	5,083
<i>Annual change (%)</i>			0.3	-1.0	1.1
Fatalities	317	731	300	700	314
<i>Annual change (%)</i>			-5.4	-4.2	4.7
Serious injuries	303	706	312	727	299
<i>Annual change (%)</i>			3.0	3.0	-4.2
Slight injuries	5,824	12,565	5,761	12,364	5,654
<i>Annual change (%)</i>			-1.1	-1.6	-1.9

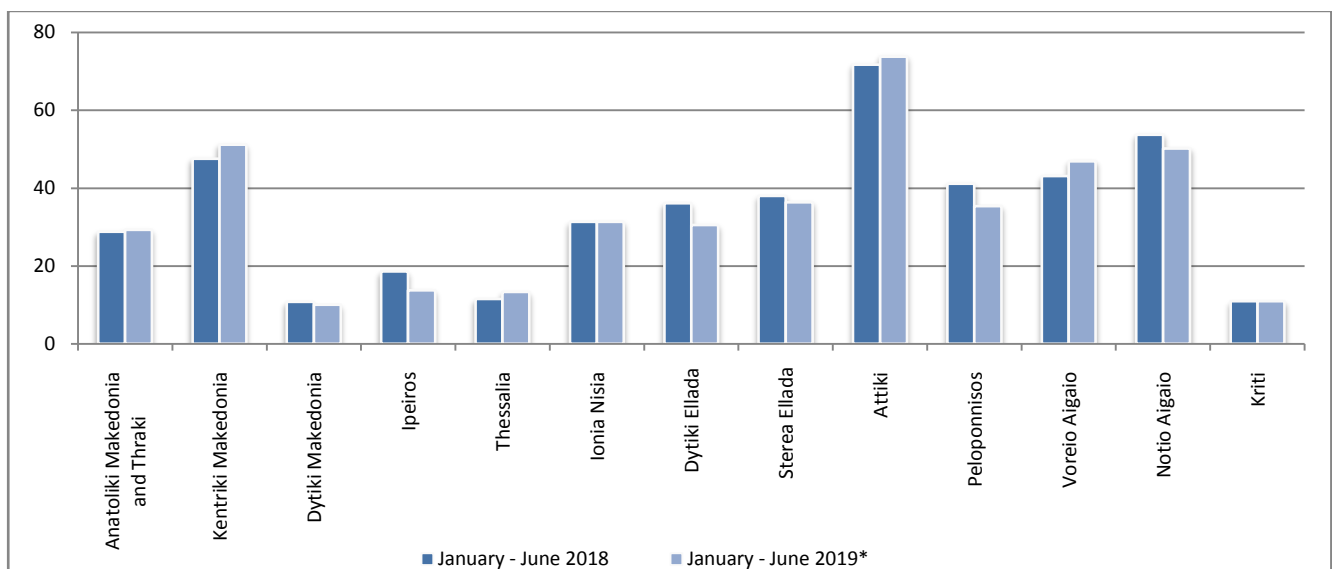
* Provisional data

Graph 5: Total road traffic accidents and fatalities, 1991-2018*



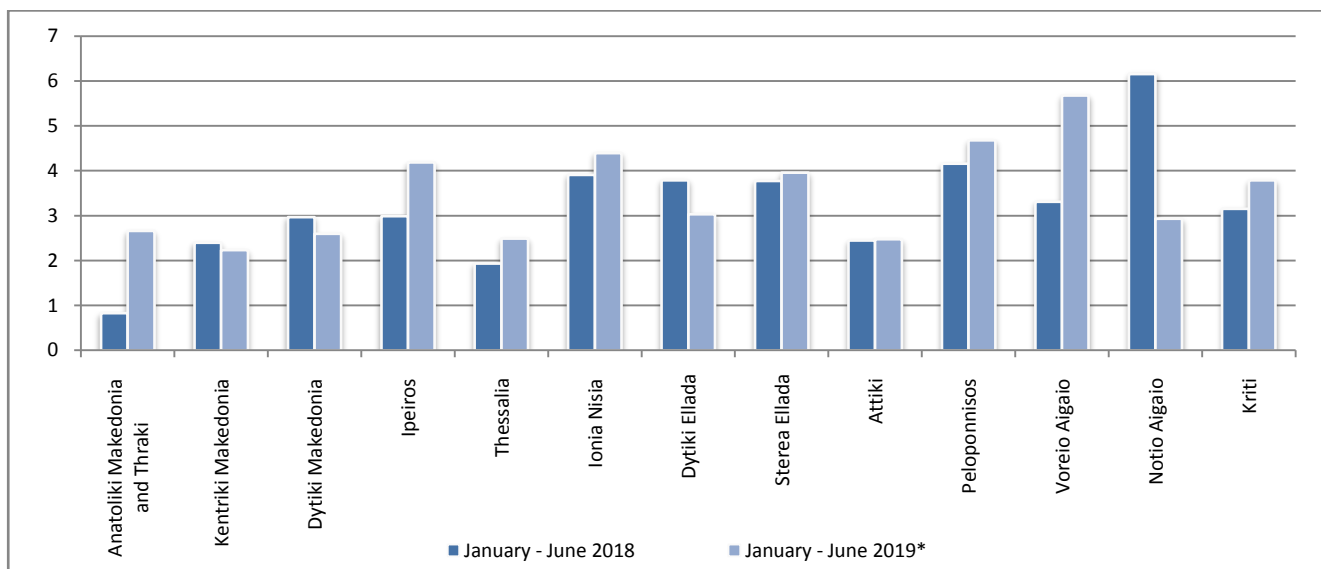
* Provisional data for the period October - December 2018

Graph 6: Road traffic accidents per 100,000 inhabitants

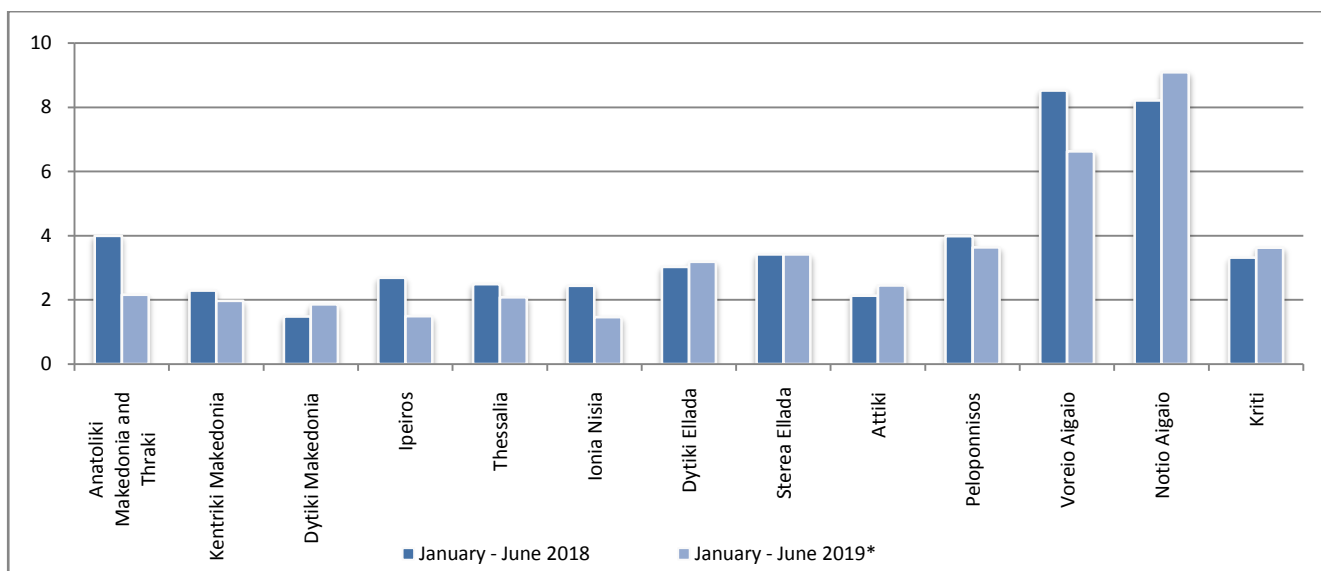


* Provisional data

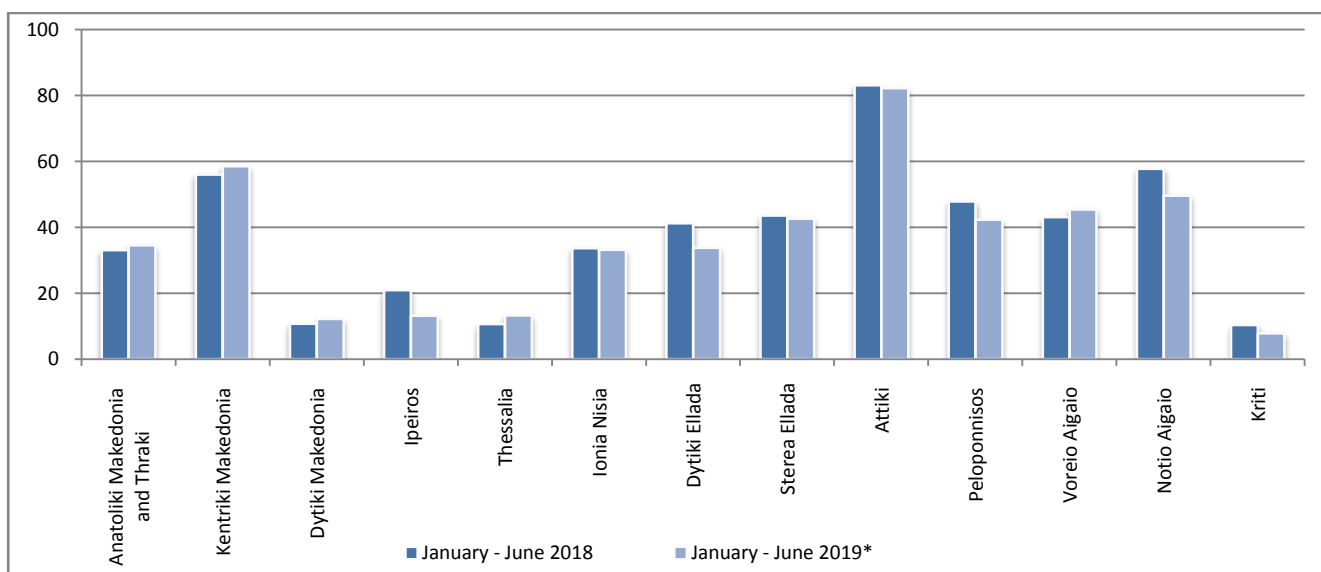
Graph 7: Fatalities per 100,000 inhabitants



Graph 8: Serious injuries per 100,000 inhabitants



Graph 9: Slight injuries per 100,000 inhabitants



* Provisional data

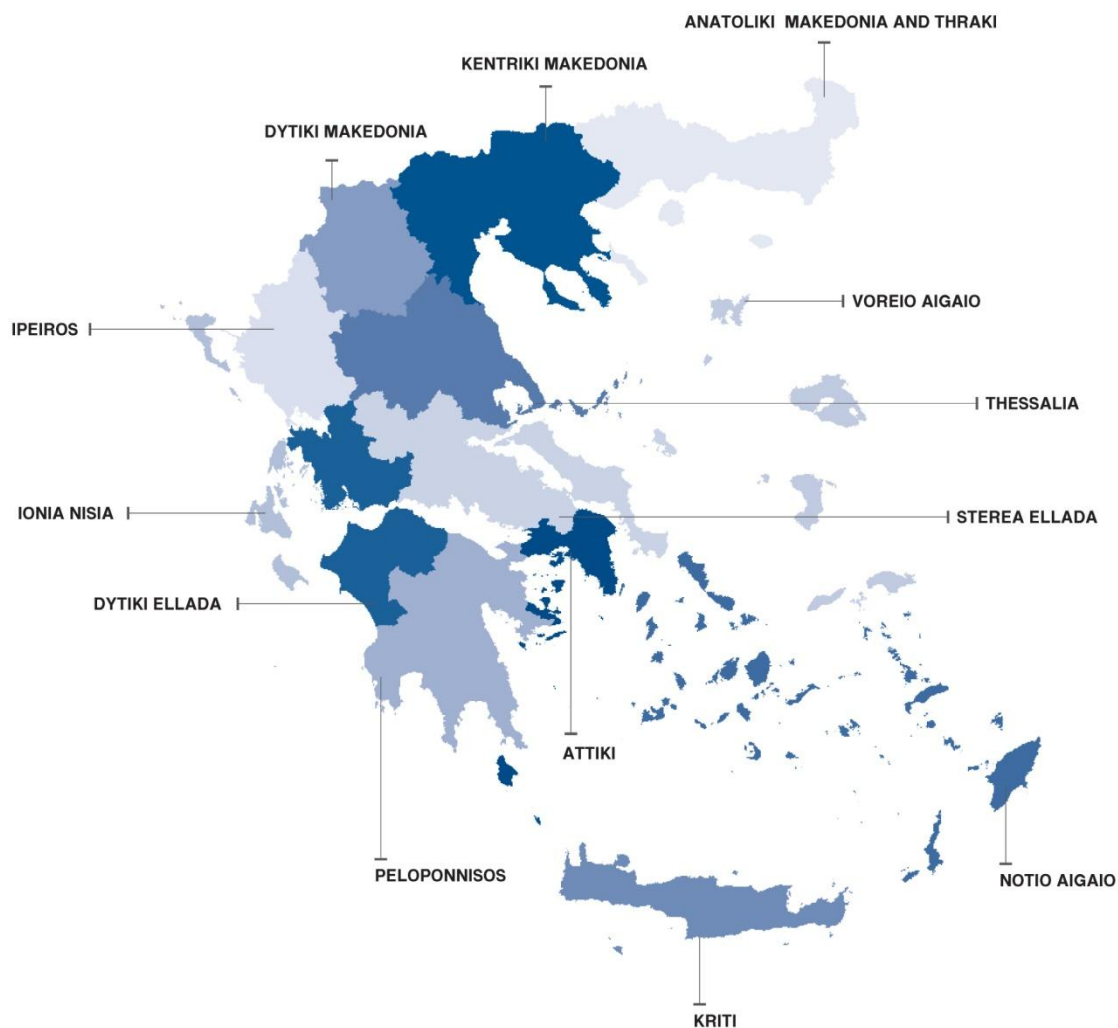
EXPLANATORY NOTES

Survey on Road Traffic Accidents

The Survey on Road Traffic Accidents is conducted on a monthly basis and it records, for each region (see map) and department of Greece and for each month separately, the number of accidents resulting in death or injury, as well as the number of persons injured by categories (drivers, passengers, pedestrians).

On a yearly basis road traffic accidents are further analyzed. The competent agencies for filling in/collecting the forms on road accidents are the local Police Authorities and the local Port Authorities of Greece.

The lower level of analysis for the place where an injury road accident occurred is the Municipal – Local Commune, which is described by a 8-digit geographic code. Data are collected on a monthly basis. The main variables are the following: place of accident, kind of road, casualties, conditions of road surface and type of road.



Legal basis The Survey on Road Traffic Accidents is governed by Council Decision 93/704 of the European Community.

Reference period Monthly.

Availability of data Provisional data are available 2 months after the reference month.
Final data are available 10 months after the reference year.

National definitions **Road accident** (injury accident): Any accident involving at least one road motor vehicle in motion on a public road or square to which the public has access (excluding yards, industrial sites or vehicle depot of public transport enterprises), resulting in at least one injured or killed person. Accidents with only material damages are not included.

Fatality (Death): Any person killed immediately or dying within 30 days as a result of an injury accident (This national definition applies since 01.01.1996)

Person injured: Any person who sustained an injury as result of an injury accident, and who normally needs medical treatment.

Serious injury: Any person who sustained an injury as result of an injury accident, such as brain damages, mutilation, multiple injuries, which may result in lack of awareness or which are life-threatening.

Slight injury: Any person injured who sustained minor and not life-threatening injuries.

Vehicle: Include motor vehicles, trolleybuses, motorcycles, bicycles, motorbikes, agricultural and road making machines, animal and hand-drawn vehicles. Railway vehicles are excluded, unless the road accident involves at least one of the aforementioned types of vehicles and therefore, railway vehicles are considered vehicles.

Methodology The forms of the survey are filled in by the local Police Authorities and the local Port Authorities as well.

References More information about Road Traffic Accidents is available on ELSTAT's website and more specifically at the link: www.statistics.gr > Population, Social Conditions > Accidents > Road Traffic Accidents.
It should be noted that previous press releases and time series are available on ELSTAT's website: www.statistics.gr