



PRESS RELEASE

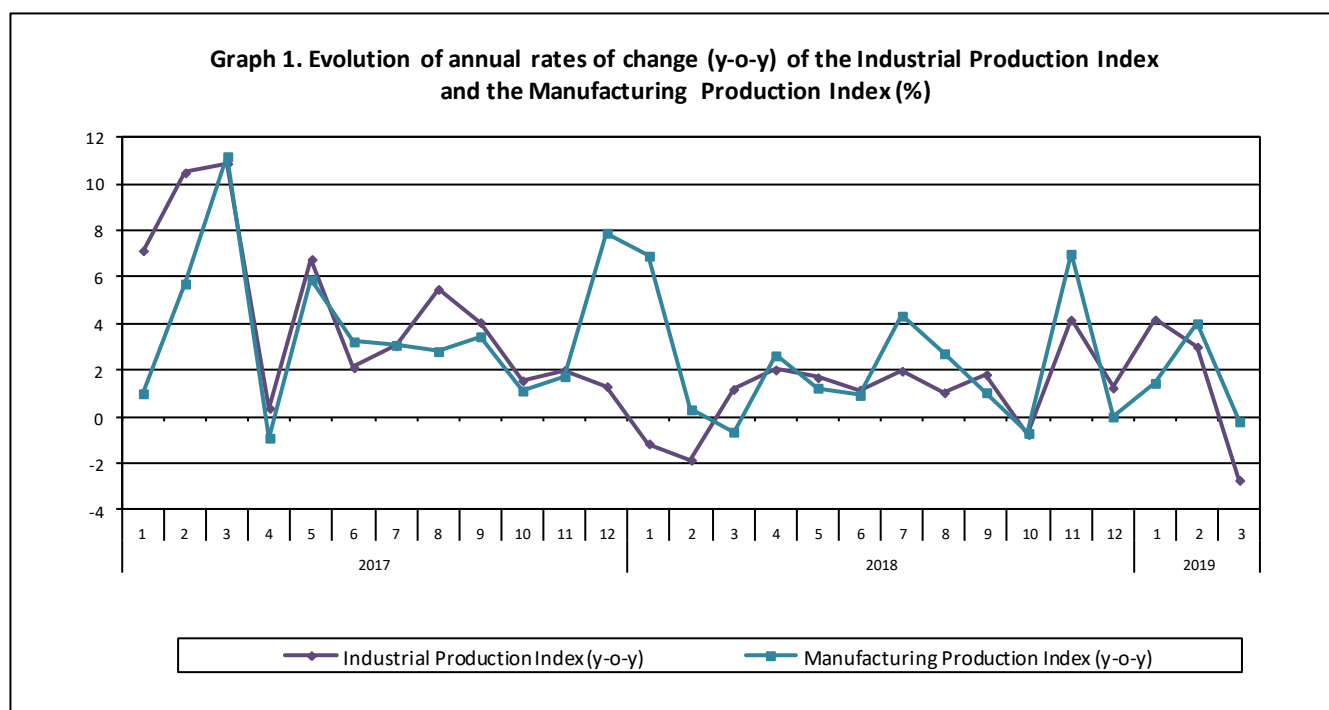
INDUSTRIAL PRODUCTION INDEX: March 2019, y-o-y decrease of 2.7%

The evolution of the Industrial Production Index (IPI) with base year 2010=100.0 in March 2019, on the basis of provisional and working day adjusted data, is as follows:

The Overall Industrial Production Index in March 2019 recorded a decrease of 2.7% compared with March 2018. The corresponding annual rate of change of the Overall IPI in March 2018 was 1.2% (Table 1).

The average Overall Industrial Production Index for the period from January to March 2019 recorded an increase of 1.4% compared with the average IPI of the period from January to March 2018 (Table 2).

The seasonally adjusted Overall Industrial Production Index in March 2019 recorded a decrease of 2.6% compared with February 2019 (Table 4).



Information:

Economic and Short-Term Indices Division
Production Indices Section

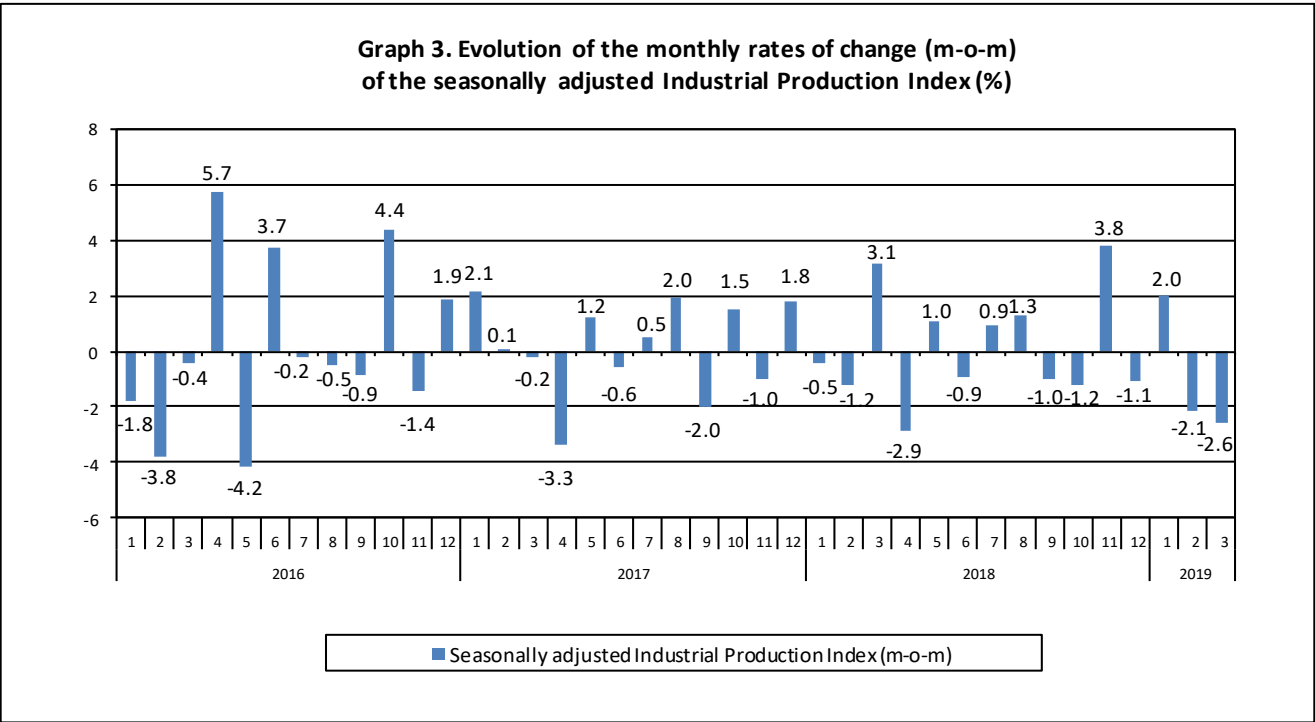
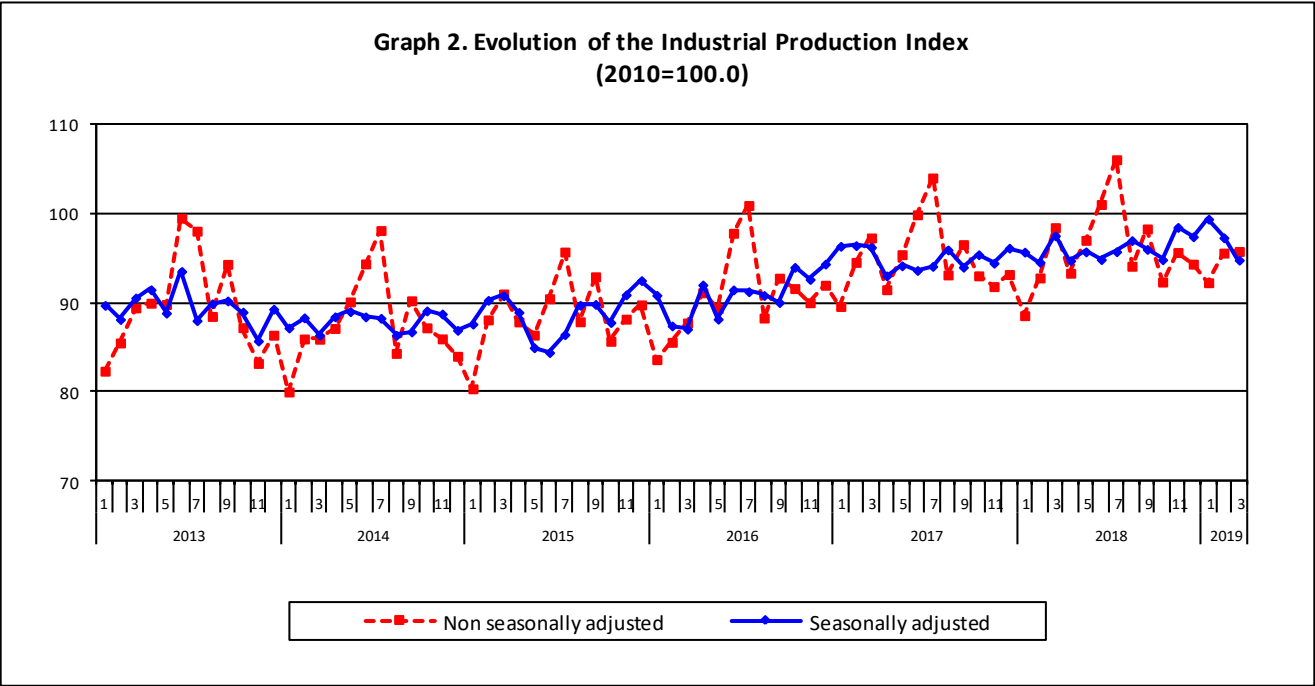
Diamantaki Aikaterini, Thymoglou Georgia

Tel: +30 213 135 2122, +30 213 135 2737

Fax: +30 213 135 2738

E-mail: a.diamantaki@statistics.gr, g.thymoglou@statistics.gr

The following graphs depict the evolution of the seasonally and non-seasonally adjusted Overall Industrial Production Index, as well as the monthly rates of change (m-o-m) of the seasonally adjusted index.



It should be noted that the time series with the seasonally adjusted indices is recalculated every time a new observation is added in the time series. Therefore, the seasonally adjusted data differ from the data published in the previous Press Release.

Evolution of the Industrial Production Index in March 2019

I. Annual changes: March 2019/ March 2018 (Table 1)

The 2.7% decrease of the working day adjusted Overall IPI in March 2019, compared with the corresponding index in March 2018, is due to the annual changes of the sub-indices in the following industrial sections:

1. Decrease of:

- 0.2% in the Manufacturing Production Index. The decrease was the result of the annual changes of the sub-indices in the following 2-digit divisions: coke and refined petroleum products, basic metals, electrical equipment, motor vehicles, trailers and semi-trailers.
- 13.8% in the Electricity Production Index.
- 0.2% in the Water Supply Production Index.

2. Increase of:

- 0.3% in the Mining and Quarrying Production Index. The increase was the result of the annual changes of the sub-indices in the following 2-digit divisions: extraction of crude petroleum and natural gas, other mining and quarrying products.

II. Rates of change of the average index in the period January – March 2019 compared with the corresponding index of the period January – March 2018 (Table 2)

The 1.4% increase of the working day adjusted Overall IPI in the 3-month period January – March 2019, compared with the corresponding index in January – March 2018, is due to the corresponding rates of change of the sub-indices in the following industrial sections:

1. Increase of:

- 1.7% in the Manufacturing Production Index.
- 2.5% in the Electricity Production Index.
- 0.9% in the Water Supply Production Index.

2. Decrease of:

- 8.4% in the Mining and Quarrying Production Index.

III. Monthly changes: March 2019 / February 2019 (Table 4)

The 2.6% decrease of the seasonally adjusted Overall IPI in March 2019, compared with the corresponding index in February 2019, is due to the monthly changes of the sub-indices in the following industrial sections:

Decrease of:

- 3.5% in the Mining and Quarrying Production Index.
- 1.8% in the Manufacturing Production Index.
- 9.7% in the Electricity Production Index.
- 0.1% in the Water Supply Production Index.

The following graph depicts the evolution of the Industrial Production Index and the Industrial Sections Indices.

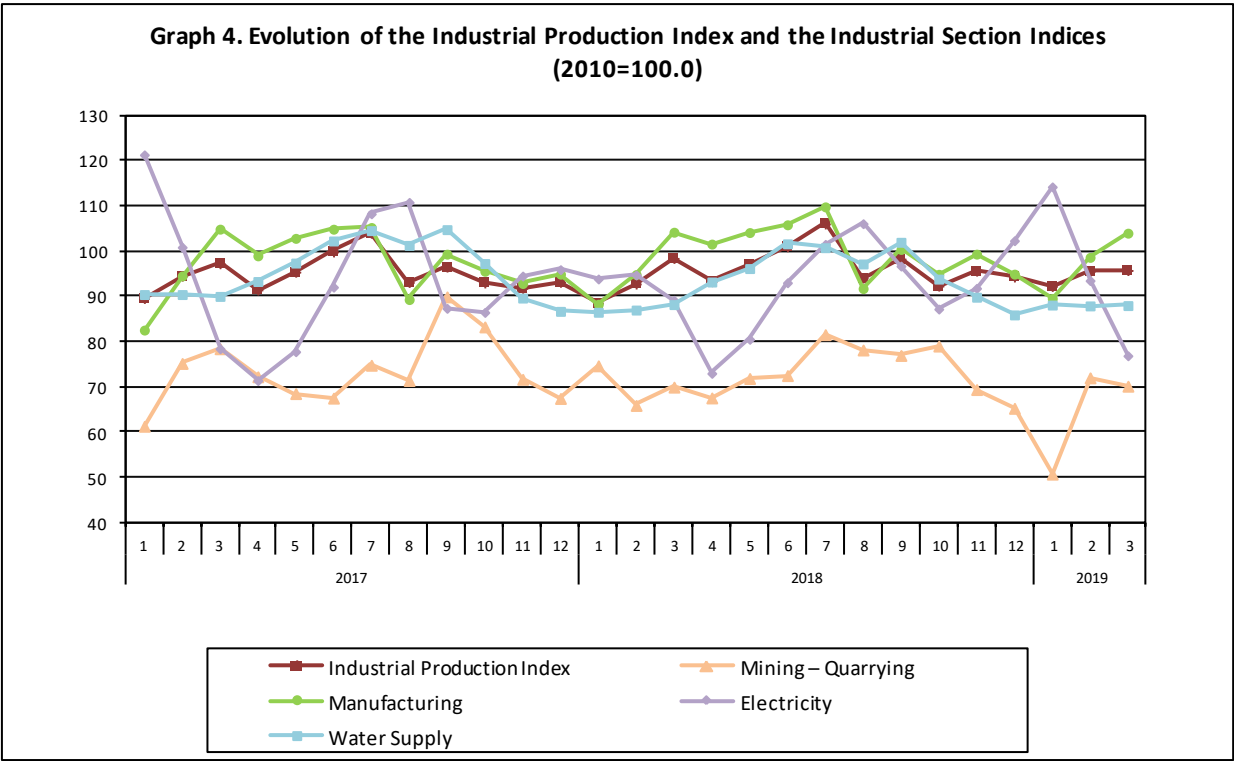


Table 1. Annual rates of change of the Industrial Production Index*(Working day adjusted data, according to the real number of working days)***Base year: 2010=100.0**

Code		Division	March			Rate of change (%)	
			2019*	2018	2017	2019/2018	2018/2017
OVERALL INDEX			95.77	98.45	97.29	-2.7	1.2
B	MINING AND QUARRYING		70.16	69.96	78.45	0.3	-10.8
05	Mining of coal and lignite		65.08	64.67	73.30	0.6	-11.8
06	Extraction of crude petroleum and natural gas		146.29	143.72	119.68	1.8	20.1
07	Mining of metal ores		84.52	87.59	78.94	-3.5	11.0
08	Other mining and quarrying products		68.47	67.72	85.72	1.1	-21.0
C	MANUFACTURING		104.03	104.24	104.92	-0.2	-0.6
10	Food		100.34	94.86	99.26	5.8	-4.4
11	Beverages		87.15	85.43	88.26	2.0	-3.2
12	Tobacco products		92.35	68.31	114.38	35.2	-40.3
13	Textiles		67.84	66.16	75.93	2.5	-12.9
14	Wearing apparel		45.84	46.52	49.15	-1.5	-5.3
15	Leather and related products		64.69	64.61	64.43	0.1	0.3
16	Wood and cork		49.41	40.70	47.98	21.4	-15.2
17	Paper and paper products		97.67	103.94	103.98	-6.0	-0.04
18	Printing and recording services		54.47	51.81	51.51	5.1	0.6
19	Coke and refined petroleum products		122.62	138.43	141.79	-11.4	-2.4
20	Chemicals and chemical products		125.99	124.11	126.86	1.5	-2.2
21	Basic pharmaceutical products and pharmaceutical preparations		222.03	163.25	141.90	36.0	15.0
22	Rubber and plastic products		105.99	96.65	104.90	9.7	-7.9
23	Other non-metallic mineral products		67.00	65.17	69.16	2.8	-5.8
24	Basic metals		137.40	170.88	146.71	-19.6	16.5
25	Fabricated metal products		94.91	96.51	98.36	-1.7	-1.9
26	Computers, electronic and optical products		142.77	124.70	134.53	14.5	-7.3
27	Electrical equipment		71.13	82.70	81.07	-14.0	2.0
28	Machinery and equipment n. e. c.		114.31	115.30	107.18	-0.9	7.6
29	Motor vehicles, trailers and semi-trailers		35.41	80.02	80.23	-55.7	-0.3
30	Other transport equipment		53.77	55.12	65.53	-2.4	-15.9
31	Furniture		61.55	65.26	55.36	-5.7	17.9
32	Other manufactured goods		94.55	88.41	98.08	6.9	-9.9
33	Repair and installation services of machinery and equipment		60.67	63.82	61.69	-4.9	3.4
D	ELECTRICITY		76.90	89.17	78.45	-13.8	13.7
35	Production and distribution of electricity		76.90	89.17	78.45	-13.8	13.7
E	WATER SUPPLY		88.01	88.22	90.04	-0.2	-2.0
36	Treatment and supply services of natural water		88.01	88.22	90.04	-0.2	-2.0
MAIN INDUSTRIAL GROUPINGS							
1	Energy		89.54	100.34	96.43	-10.8	4.1
2	Intermediate goods		96.81	101.20	100.43	-4.3	0.8
3	Capital goods		77.36	79.75	80.20	-3.0	-0.6
4	Consumer Durables		56.93	67.29	68.53	-15.4	-1.8
5	Consumer Non-Durables		110.03	99.26	101.11	10.8	-1.8

* Provisional data

Note: The indices are rounded up to two decimal figures when published and percentage changes up to one decimal figure when published.

Table 2. Average indices of the period January – March and rates of change (%) of the Industrial Production Index
(Working day adjusted data, according to the real number of working days)

Base year: 2010=100.0

Code		Division	Average indices of the period Jan.-Mar.			Rate of change (%)	
			2019*	2018	2017	2019/2018	2018/2017
OVERALL INDEX			94.54	93.27	93.81	1.4	-0.6
B	MINING AND QUARRYING		64.29	70.18	71.65	-8.4	-2.1
05	Mining of coal and lignite		61.25	67.61	72.23	-9.4	-6.4
06	Extraction of crude petroleum and natural gas		159.12	149.93	113.90	6.1	31.6
07	Mining of metal ores		63.34	82.09	64.72	-22.8	26.8
08	Other mining and quarrying products		62.20	63.50	68.93	-2.1	-7.9
C	MANUFACTURING		97.43	95.80	94.03	1.7	1.9
10	Food		93.95	91.61	90.51	2.6	1.2
11	Beverages		72.84	73.87	66.88	-1.4	10.5
12	Tobacco products		93.48	59.72	96.70	56.5	-38.2
13	Textiles		61.88	64.88	67.26	-4.6	-3.5
14	Wearing apparel		39.37	43.18	43.42	-8.8	-0.5
15	Leather and related products		48.06	49.36	49.27	-2.6	0.2
16	Wood and cork		38.04	35.60	37.25	6.8	-4.4
17	Paper and paper products		100.32	102.54	97.84	-2.2	4.8
18	Printing and recording services		48.96	45.93	44.95	6.6	2.2
19	Coke and refined petroleum products		129.52	139.70	136.59	-7.3	2.3
20	Chemicals and chemical products		112.49	108.62	105.78	3.6	2.7
21	Basic pharmaceutical products and pharmaceutical preparations		192.18	145.90	127.84	31.7	14.1
22	Rubber and plastic products		96.21	95.41	94.30	0.8	1.2
23	Other non-metallic mineral products		56.15	56.89	58.79	-1.3	-3.2
24	Basic metals		142.41	140.70	140.54	1.2	0.1
25	Fabricated metal products		82.11	83.67	88.11	-1.9	-5.0
26	Computers, electronic and optical products		134.01	112.02	112.32	19.6	-0.3
27	Electrical equipment		64.03	74.70	71.83	-14.3	4.0
28	Machinery and equipment n. e. c.		97.78	96.92	85.95	0.9	12.8
29	Motor vehicles, trailers and semi-trailers		47.41	80.37	87.57	-41.0	-8.2
30	Other transport equipment		42.83	48.83	53.75	-12.3	-9.2
31	Furniture		47.42	49.36	40.84	-3.9	20.8
32	Other manufactured goods		86.08	81.57	78.05	5.5	4.5
33	Repair and installation services of machinery and equipment		52.95	49.13	48.34	7.8	1.6
D	ELECTRICITY		94.90	92.61	100.24	2.5	-7.6
35	Production and distribution of electricity		94.90	92.61	100.24	2.5	-7.6
E	WATER SUPPLY		88.02	87.26	90.31	0.9	-3.4
36	Treatment and supply services of natural water		88.02	87.26	90.31	0.9	-3.4
MAIN INDUSTRIAL GROUPINGS							
1	Energy		100.71	102.73	106.54	-2.0	-3.6
2	Intermediate goods		90.13	90.98	90.39	-0.9	0.7
3	Capital goods		67.71	66.04	66.86	2.5	-1.2
4	Consumer Durables		46.72	54.57	51.66	-14.4	5.6
5	Consumer Non-Durables		98.95	90.56	87.73	9.3	3.2

* Provisional data

Note: The indices are rounded up to two decimal figures when published and percentage changes up to one decimal figure when published.

Table 3. Monthly rate of change of the Industrial Production Index*(Working day adjusted data, according to the real number of working days)*

Base year: 2010=100.0

Code	Division	March 2019*	February 2019**	Rate of change (%) Mar. 2019 / Feb. 2019
OVERALL INDEX		95.77	95.59	0.2
B	MINING AND QUARRYING	70.16	72.02	-2.6
05	Mining of coal and lignite	65.08	72.19	-9.8
06	Extraction of crude petroleum and natural gas	146.29	170.52	-14.2
07	Mining of metal ores	84.52	54.35	55.5
08	Other mining and quarrying products	68.47	68.89	-0.6
C	MANUFACTURING	104.03	98.68	5.4
10	Food	100.34	93.62	7.2
11	Beverages	87.15	75.47	15.5
12	Tobacco products	92.35	90.69	1.8
13	Textiles	67.84	64.41	5.3
14	Wearing apparel	45.84	35.48	29.2
15	Leather and related products	64.69	56.71	14.1
16	Wood and cork	49.41	40.23	22.8
17	Paper and paper products	97.67	101.20	-3.5
18	Printing and recording services	54.47	49.48	10.1
19	Coke and refined petroleum products	122.62	135.29	-9.4
20	Chemicals and chemical products	125.99	116.62	8.0
21	Basic pharmaceutical products and pharmaceutical preparations	222.03	180.76	22.8
22	Rubber and plastic products	105.99	95.53	10.9
23	Other non-metallic mineral products	67.00	54.38	23.2
24	Basic metals	137.40	148.93	-7.7
25	Fabricated metal products	94.91	83.17	14.1
26	Computers, electronic and optical products	142.77	146.92	-2.8
27	Electrical equipment	71.13	67.57	5.3
28	Machinery and equipment n. e. c.	114.31	102.90	11.1
29	Motor vehicles, trailers and semi-trailers	35.41	32.74	8.2
30	Other transport equipment	53.77	42.35	27.0
31	Furniture	61.55	48.33	27.4
32	Other manufactured goods	94.55	95.34	-0.8
33	Repair and installation services of machinery and equipment	60.67	52.15	16.3
D	ELECTRICITY	76.90	93.53	-17.8
35	Production and distribution of electricity	76.90	93.53	-17.8
E	WATER SUPPLY	88.01	87.93	0.1
36	Treatment and supply services of natural water	88.01	87.93	0.1
MAIN INDUSTRIAL GROUPINGS				
1	Energy	89.54	102.61	-12.7
2	Intermediate goods	96.81	91.30	6.0
3	Capital goods	77.36	69.36	11.5
4	Consumer Durables	56.93	48.38	17.7
5	Consumer Non-Durables	110.03	98.52	11.7

* Provisional data **Revised data

Note: The indices are rounded up to two decimal figures when published and percentage changes up to one decimal figure when published.

Table 4. Monthly rate of change of the seasonally adjusted Industrial Production Index

Base year: 2010=100.0

Code	Division	March 2019	February 2019	Rate of change (%) Mar. 2019 / Feb. 2019
OVERALL INDEX		94.79	97.30	-2.6
B	MINING AND QUARRYING	73.20	75.88	-3.5
05	Mining of coal and lignite	66.91	73.03	-8.4
06	Extraction of crude petroleum and natural gas	146.55	166.54	-12.0
07	Mining of metal ores	85.37	60.79	40.4
08	Other mining and quarrying products	73.09	79.78	-8.4
C	MANUFACTURING	99.89	101.71	-1.8
10	Food	99.17	97.74	1.5
11	Beverages	85.92	86.79	-1.0
12	Tobacco products	95.68	95.76	-0.1
13	Textiles	60.44	59.26	2.0
14	Wearing apparel	45.18	40.14	12.6
15	Leather and related products	45.17	45.26	-0.2
16	Wood and cork	47.58	42.41	12.2
17	Paper and paper products	98.23	97.43	0.8
18	Printing and recording services	50.32	50.25	0.1
19	Coke and refined petroleum products	123.02	132.36	-7.1
20	Chemicals and chemical products	108.91	113.06	-3.7
21	Basic pharmaceutical products and pharmaceutical preparations	190.96	172.50	10.7
22	Rubber and plastic products	97.48	93.53	4.2
23	Other non-metallic mineral products	67.92	61.30	10.8
24	Basic metals	132.94	146.22	-9.1
25	Fabricated metal products	87.37	85.75	1.9
26	Computers, electronic and optical products	128.22	148.60	-13.7
27	Electrical equipment	63.90	66.63	-4.1
28	Machinery and equipment n. e. c.	105.68	111.66	-5.4
29	Motor vehicles, trailers and semi-trailers	38.25	38.69	-1.1
30	Other transport equipment	57.82	58.17	-0.6
31	Furniture	56.00	56.58	-1.0
32	Other manufactured goods	97.15	105.97	-8.3
33	Repair and installation services of machinery and equipment	60.03	61.17	-1.9
D	ELECTRICITY	82.80	91.66	-9.7
35	Production and distribution of electricity	82.80	91.66	-9.7
E	WATER SUPPLY	95.05	95.14	-0.1
36	Treatment and supply services of natural water	95.05	95.14	-0.1
MAIN INDUSTRIAL GROUPINGS				
1	Energy	95.09	101.32	-6.1
2	Intermediate goods	91.74	93.53	-1.9
3	Capital goods	74.62	78.53	-5.0
4	Consumer Durables	49.95	51.60	-3.2
5	Consumer Non-Durables	104.50	102.22	2.2

Notes:

1. The indices are rounded up to two decimal figures when published and percentage changes up to one decimal figure when published.
2. The whole time-series with seasonally adjusted indices is recalculated every time a new observation is added in the time-series.

Table 5. Evolution of the Overall Industrial Production Index

(Working day adjusted data, according to the real number of working days)

Base year: 2010=100.0

Year and month	Overall Index	Monthly rate of change (%)	Annual rate of change (%)	12-month average indices (moving average)	Rate of change of the 12-month average indices (%)
2017: 1	89.59	-2.6	7.1	91.40	2.7
2	94.55	5.5	10.5	92.15	3.8
3	97.29	2.9	10.9	92.94	5.0
4	91.47	-6.0	0.4	92.97	4.8
5	95.41	4.3	6.8	93.48	5.0
6	99.89	4.7	2.1	93.65	4.5
7	104.03	4.1	3.1	93.91	4.3
8	93.14	-10.5	5.5	94.31	4.7
9	96.54	3.7	4.1	94.62	5.1
10	93.03	-3.6	1.6	94.74	4.6
11	91.82	-1.3	2.0	94.89	4.6
12	93.18	1.5	1.3	94.99	4.5
Annual average	94.99	–	–	94.99	4.5
2018: 1	88.56	-5.0	-1.2	94.91	3.8
2	92.79	4.8	-1.9	94.76	2.8
3	98.45	6.1	1.2	94.86	2.1
4	93.33	-5.2	2.0	95.01	2.2
5	97.03	4.0	1.7	95.15	1.8
6	101.05	4.1	1.2	95.25	1.7
7	106.08	5.0	2.0	95.42	1.6
8	94.11	-11.3	1.0	95.50	1.3
9	98.30	4.5	1.8	95.64	1.1
10	92.33	-6.1	-0.7	95.59	0.9
11	95.65	3.6	4.2	95.91	1.1
12*	94.35	-1.4	1.3	96.00	1.1
Annual average	96.00	–	–	96.00	1.1
2019: 1	92.26	-2.2	4.2	96.31	1.5
2**	95.59	3.6	3.0	96.54	1.9
3*	95.77	0.2	-2.7	96.32	1.5

* Provisional data ** Revised data

Note: The indices are rounded up to two decimal figures when published and percentage changes up to one decimal figure when published.

Table 6. Monthly evolution of the seasonally adjusted Overall Industrial Production Index and Main Industrial Groupings

Base year: 2010=100.0

Year and month		Overall Index		Energy		Intermediate goods		Capital goods		Consumer durables		Consumer non-durables	
		Index	Monthly rate of change (%)	Index	Monthly rate of change (%)	Index	Monthly rate of change (%)	Index	Monthly rate of change (%)	Index	Monthly rate of change (%)	Index	Monthly rate of change (%)
2017:	1	96.35	2.1	112.01	3.0	90.79	5.7	74.32	2.4	51.32	-4.4	87.27	-2.4
	2	96.42	0.1	105.95	-5.4	93.22	2.7	79.62	7.1	56.80	10.7	92.23	5.7
	3	96.24	-0.2	102.15	-3.6	95.22	2.1	77.18	-3.1	60.32	6.2	95.35	3.4
	4	93.03	-3.3	101.42	-0.7	90.32	-5.1	68.98	-10.6	53.89	-10.7	91.54	-4.0
	5	94.15	1.2	100.85	-0.6	92.76	2.7	74.52	8.0	59.69	10.8	92.56	1.1
	6	93.63	-0.6	99.85	-1.0	91.83	-1.0	75.48	1.3	57.48	-3.7	92.87	0.3
	7	94.09	0.5	98.88	-1.0	92.72	1.0	81.54	8.0	56.27	-2.1	93.79	1.0
	8	95.94	2.0	100.78	1.9	98.52	6.3	71.57	-12.2	54.67	-2.8	94.66	0.9
	9	94.00	-2.0	99.23	-1.5	93.37	-5.2	71.50	-0.1	56.99	4.2	94.52	-0.1
	10	95.41	1.5	101.91	2.7	93.16	-0.2	76.04	6.4	58.12	2.0	94.99	0.5
	11	94.45	-1.0	104.50	2.5	90.87	-2.5	72.98	-4.0	57.23	-1.5	90.79	-4.4
	12	96.14	1.8	101.78	-2.6	92.95	2.3	76.18	4.4	63.04	10.1	97.69	7.6
Annual average		94.99		102.44		92.98		74.99		57.15		93.19	
2018:	1	95.70	-0.5	101.05	-0.7	95.70	3.0	76.68	0.7	60.17	-4.5	94.59	-3.2
	2	94.55	-1.2	101.72	0.7	89.85	-6.1	73.73	-3.8	60.08	-0.2	95.66	1.1
	3	97.53	3.1	106.42	4.6	95.87	6.7	76.72	4.1	58.81	-2.1	93.61	-2.1
	4	94.73	-2.9	100.65	-5.4	92.31	-3.7	81.42	6.1	60.09	2.2	93.81	0.2
	5	95.72	1.0	100.67	0.02	93.79	1.6	78.03	-4.2	57.84	-3.7	96.87	3.3
	6	94.86	-0.9	101.25	0.6	92.46	-1.4	75.10	-3.8	55.99	-3.2	94.93	-2.0
	7	95.74	0.9	99.84	-1.4	94.81	2.5	74.54	-0.7	54.71	-2.3	98.10	3.3
	8	96.99	1.3	104.45	4.6	96.85	2.2	80.78	8.4	52.83	-3.4	92.99	-5.2
	9	96.00	-1.0	104.18	-0.3	92.72	-4.3	78.79	-2.5	51.55	-2.4	94.18	1.3
	10	94.84	-1.2	101.14	-2.9	92.07	-0.7	74.15	-5.9	51.30	-0.5	95.88	1.8
	11	98.48	3.8	103.85	2.7	94.45	2.6	78.02	5.2	50.37	-1.8	102.24	6.6
	12	97.42	-1.1	104.38	0.5	92.02	-2.6	73.96	-5.2	54.62	8.4	100.60	-1.6
Annual average		96.05		102.47		93.57		76.83		55.70		96.12	
2019:	1	99.40	2.0	105.84	1.4	93.67	1.8	79.44	7.4	51.79	-5.2	103.14	2.5
	2	97.30	-2.1	101.32	-4.3	93.53	-0.1	78.53	-1.1	51.60	-0.4	102.22	-0.9
	3	94.79	-2.6	95.09	-6.1	91.74	-1.9	74.62	-5.0	49.95	-3.2	104.50	2.2

Notes:

1. The indices are rounded up to two decimal figures when published and percentage changes up to one decimal figure when published.
2. The whole time-series with seasonally adjusted indices is recalculated every time a new observation is added in the time-series.

METHODOLOGICAL NOTES

Generally	The Industrial Production Index (IPI) is compiled since 1959.
Purpose of the index	The IPI is an important business cycle indicator, which shows the monthly activity in the Mining and Quarrying, Manufacturing, Electricity and Water Supply divisions. More specifically, the objective of the Industrial Production Index is to compare the magnitude (volume) of the output in the current month with the corresponding output in any given period which is considered as base period. The IPI shows the evolution of the value added of the production factors cost, at constant prices.
Legal basis	The compilation of the IPI is governed by Council Regulation (EC) No 1165/98 concerning short-term statistics. Furthermore, the IPI is governed by Regulation (EC) No 1893/2006 of the European Parliament and of the Council, by Commission Regulation (EC) No 656/2007 and by Council Regulation (EC) No 451/2008.
Reference period	Month.
Base year	2010=100.0.
Revision	The IPI is a fixed base index. Pursuant to the provisions of Council Regulation No 1165/98 concerning short-term statistics, the index is updated every five (5) years, in years ending in 0 or 5.
Statistical classifications	At the level of branches of economic activities, the classification NACE Rev.2 of Eurostat was used (Regulation No 1893/2006), while at the level of main industrial groups, the allocation of two-digit and three-digit NACE Rev. 2 headings to categories of aggregate classification was used, in accordance with Council Regulation No 656/2007. At product level, the classification CPA 2008 of Eurostat was used, according to Council Regulation No 451/2008.
Geographical coverage	The Index covers the whole Country.
Coverage of economic activities	The index covers all the sections of industry, the main industrial groups, all levels of economic activities (divisions, groups and classes) and the level of products.
Statistical survey	The data are collected from a sample of 1,338 enterprises. The survey covers 354 products and the measurement of the surveyed products is made in terms of output quantities or in terms of production value or turnover, according to the specific situation in each branch of economic activity.
Seasonal adjustment	Seasonal adjustment is the procedure followed to remove the impact of seasonality on the time-series (i.e. the impact of monthly effects, e.g. holidays, tourist period etc), in order to improve comparability over time. The method used is the TRAMO-SEATS method with the use of JDemetra+ 2.0.0. For the seasonal adjustment of the Industrial Production Index at 2-digit level of NACE Rev.2, at section level (B – Mining and Quarrying, C – Manufacturing, D – Electricity and E – Water Supply) and for the Main Industrial Groupings (MIGs), the direct approach is applied, namely each time-series is seasonally adjusted independently. For the overall Industrial Production Index, the indirect approach is applied, with the seasonally adjusted IPI being computed by aggregating the seasonally adjusted MIGs using appropriate weights.
Publication of data	The IPI with the new base year (2010) is released since August 2014, with June 2014 as the first reference month. Data with base year 2010=100.0 are available from January 2000 onwards.
References	More information about the methodology concerning the compilation and calculation of the index and for the time series is available on the website of the Hellenic Statistical Authority (ELSTAT) (http://www.statistics.gr/en/statistics/-/publication/DKT21/).