



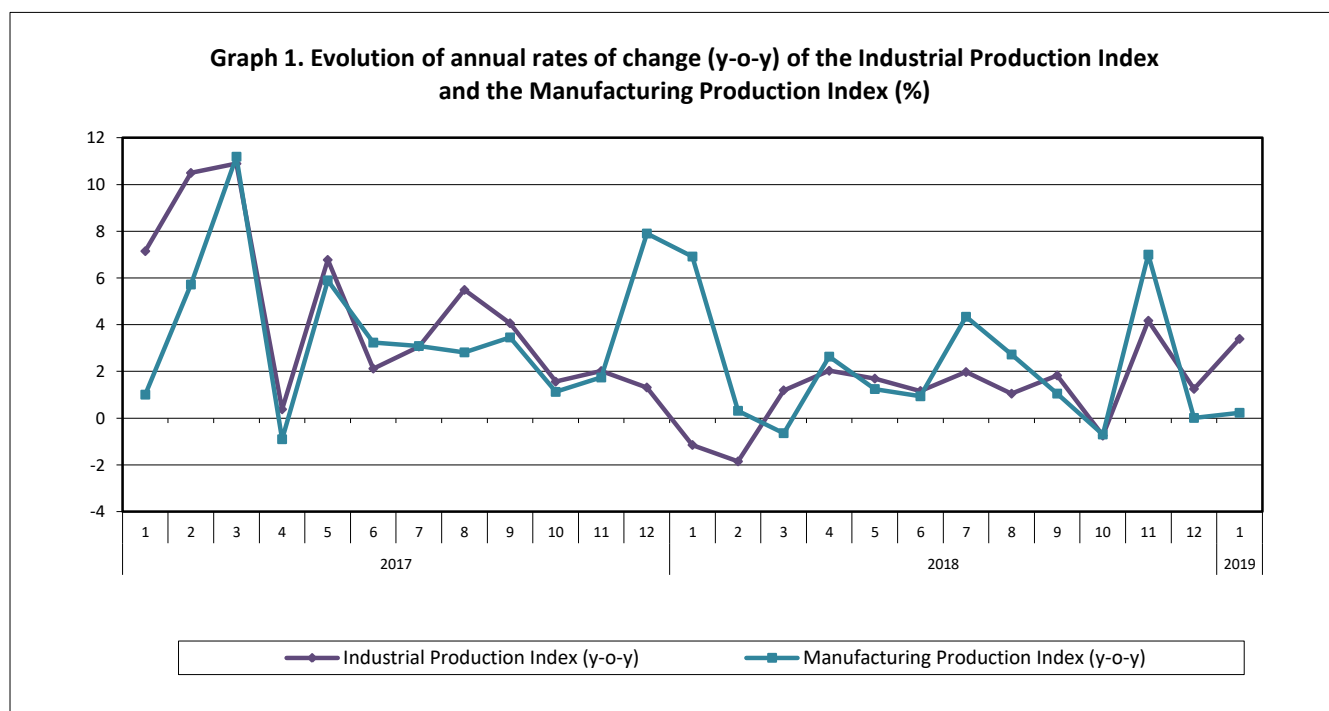
PRESS RELEASE

INDUSTRIAL PRODUCTION INDEX: January 2019, y-o-y increase of 3.4%

The evolution of the Industrial Production Index (IPI) with base year 2010=100.0 in January 2019, on the basis of provisional and working day adjusted data, is as follows:

The Overall Industrial Production Index in January 2019 recorded an increase of 3.4% compared with January 2018. The corresponding annual rate of change of the Overall IPI in January 2018 was -1.2% (Table 1).

The seasonally adjusted Overall Industrial Production Index in January 2019 recorded an increase of 1.5% compared with December 2018 (Table 4).



Information:

Economic and Short-Term Indices Division
Production Indices Section

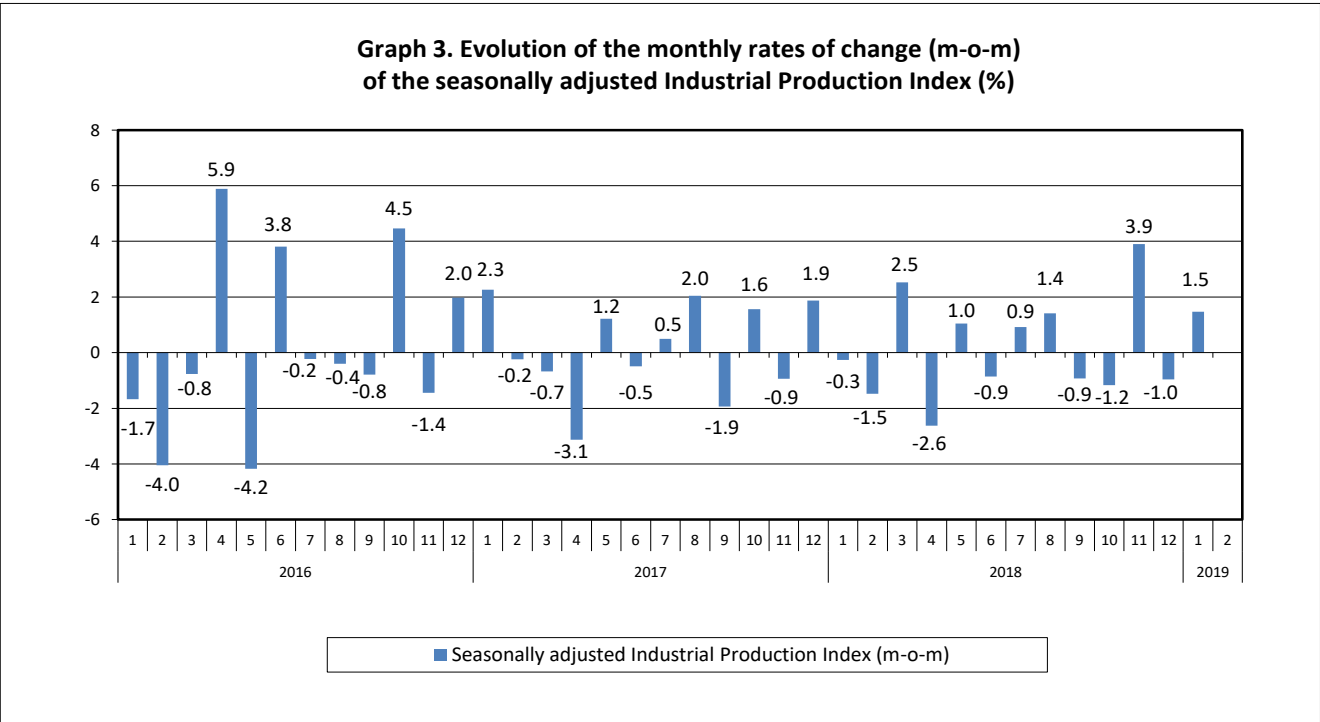
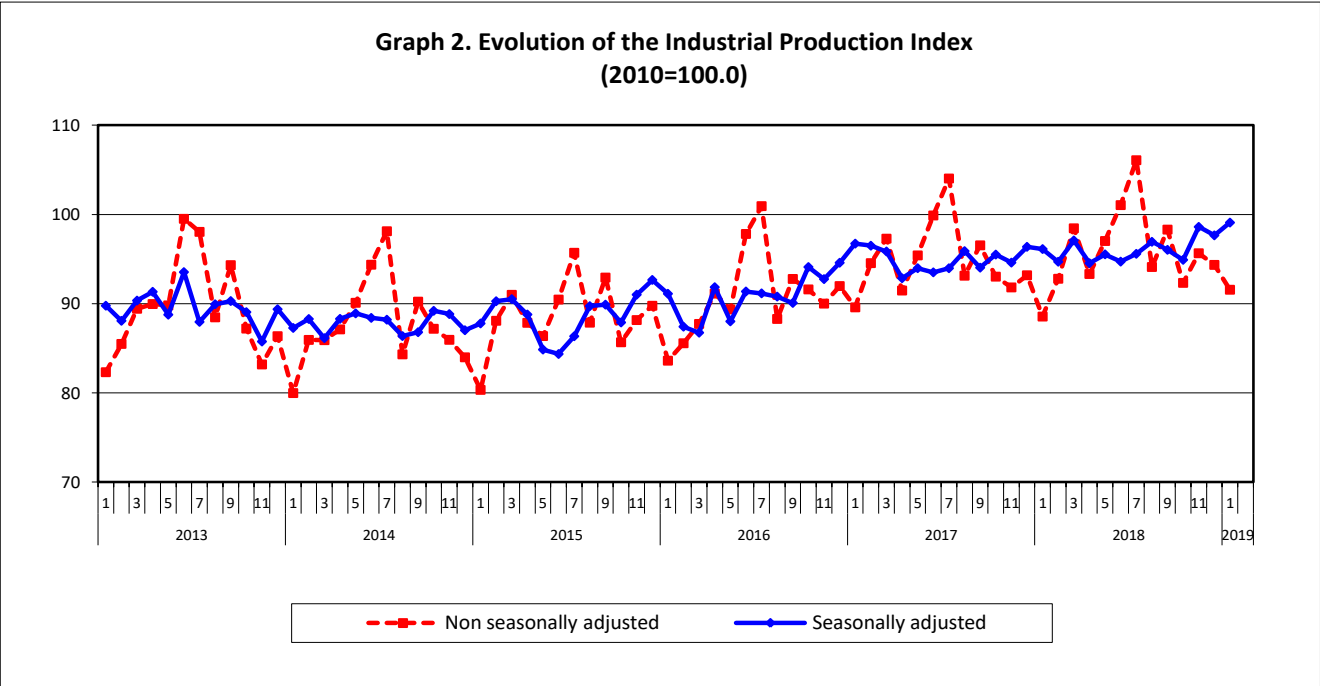
Diamantaki Aikaterini, Thymoglou Georgia

Tel: +30 213 135 2122, +30 213 135 2737

Fax: +30 213 135 2738

E-mail: a.diamantaki@statistics.gr, g.thymoglou@statistics.gr

The following graphs depict the evolution of the seasonally and non-seasonally adjusted Overall Industrial Production Index, as well as the monthly rates of change (m-o-m) of the seasonally adjusted index.



It should be noted that the time series with the seasonally adjusted indices is recalculated every time a new observation is added in the time series. Therefore, the seasonally adjusted data differ from the data published in the previous Press Release.

Evolution of the Industrial Production Index in January 2019

I. Annual changes: January 2019/ January 2018 (Table 1)

The 3.4% increase of the working day adjusted Overall IPI in January 2019, compared with the corresponding index in January 2018, is due to the annual changes of the sub-indices in the following industrial sections:

1. Increase of:

- 0.2% in the Manufacturing Production Index. The increase was the result of the annual changes of the sub-indices in the following 2-digit divisions: tobacco products, printing and recording services, basic pharmaceutical products and pharmaceutical preparations, repair and installation services of machinery and equipment.
- 21.9% in the Electricity Production Index.
- 2.1% in the Water Supply Production Index.

2. Decrease of:

- 32.1% in the Mining and Quarrying Production Index. The decrease was the result of the annual changes of the sub-indices in the following 2-digit divisions: mining of coal and lignite, mining of metal ores.

II. Monthly changes: January 2019 / December 2018 (Table 4)

The 1.5% increase of the seasonally adjusted Overall IPI in January 2019, compared with the corresponding index in December 2018, is due to the monthly changes of the sub-indices in the following industrial sections:

1. Increase of:

- 1.1% in the Manufacturing Production Index.
- 9.5% in the Electricity Production Index.
- 2.5% in the Water Supply Production Index.

2. Decrease of:

- 19.9% in the Mining and Quarrying Production Index.

The following graph depicts the evolution of the Industrial Production Index and the Industrial Sections Indices.

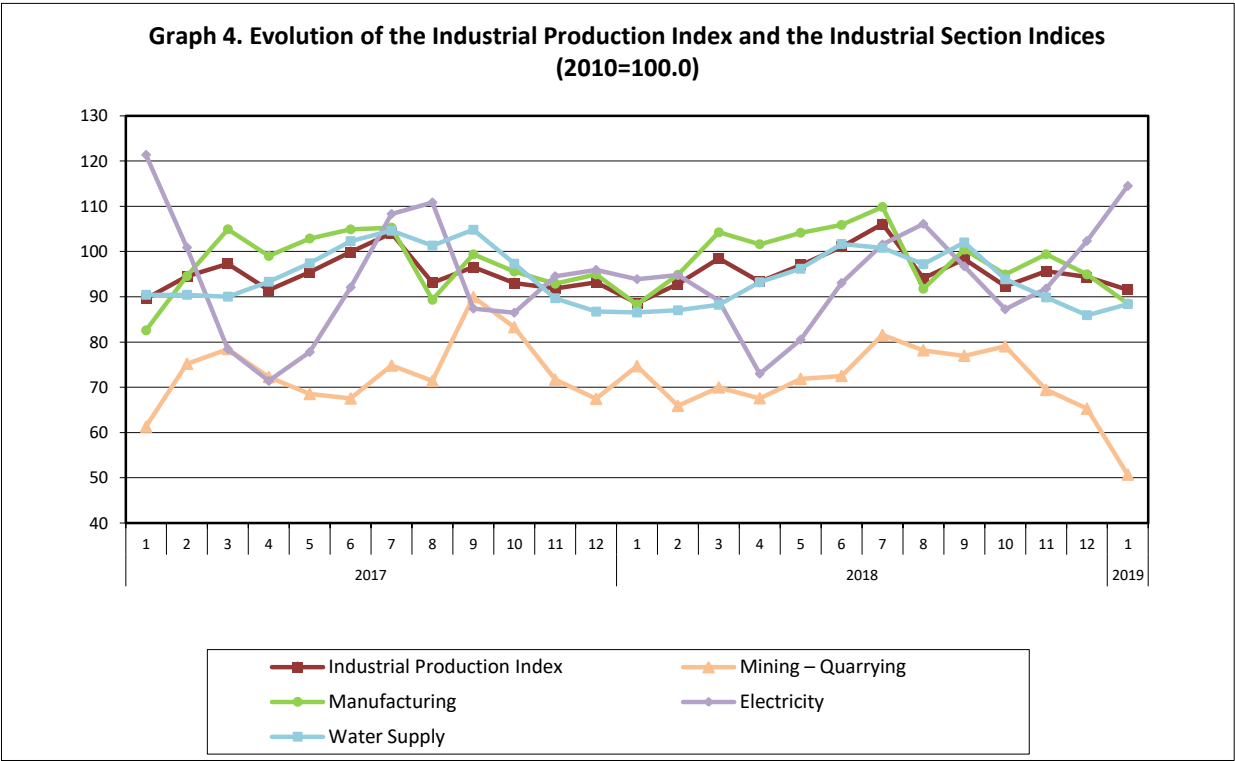


Table 1. Annual rates of change of the Industrial Production Index*(Working day adjusted data, according to the real number of working days)***Base year: 2010=100.0**

Code		Division	January			Rate of change (%)	
			2019*	2018	2017	2019/2018	2018/2017
OVERALL INDEX			91.56	88.56	89.59	3.4	-1.2
B	MINING AND QUARRYING		50.70	74.67	61.30	-32.1	21.8
05	Mining of coal and lignite		46.48	78.54	68.38	-40.8	14.9
06	Extraction of crude petroleum and natural gas		160.55	156.23	108.19	2.8	44.4
07	Mining of metal ores		51.16	78.96	42.22	-35.2	87.0
08	Other mining and quarrying products		49.22	56.42	48.35	-12.8	16.7
C	MANUFACTURING		88.50	88.30	82.59	0.2	6.9
10	Food		86.44	88.44	81.09	-2.3	9.1
11	Beverages		52.55	57.86	45.20	-9.2	28.0
12	Tobacco products		97.39	58.60	87.83	66.2	-33.3
13	Textiles		53.60	59.39	58.80	-9.7	1.0
14	Wearing apparel		36.74	38.47	36.72	-4.5	4.8
15	Leather and related products		22.66	26.95	24.07	-15.9	11.9
16	Wood and cork		23.07	23.18	19.77	-0.5	17.3
17	Paper and paper products		101.55	99.60	90.42	2.0	10.1
18	Printing and recording services		45.61	39.56	35.57	15.3	11.2
19	Coke and refined petroleum products		130.65	141.32	131.06	-7.5	7.8
20	Chemicals and chemical products		93.19	90.56	84.44	2.9	7.2
21	Basic pharmaceutical products and pharmaceutical preparations		166.28	125.98	114.26	32.0	10.3
22	Rubber and plastic products		85.19	92.38	82.28	-7.8	12.3
23	Other non-metallic mineral products		47.45	49.83	48.35	-4.8	3.1
24	Basic metals		140.73	130.48	133.35	7.8	-2.2
25	Fabricated metal products		68.23	73.01	75.95	-6.5	-3.9
26	Computers, electronic and optical products		112.34	112.84	91.64	-0.4	23.1
27	Electrical equipment		53.43	70.11	64.96	-23.8	7.9
28	Machinery and equipment n. e. c.		75.40	77.92	62.70	-3.2	24.3
29	Motor vehicles, trailers and semi-trailers		74.09	78.80	78.77	-6.0	0.04
30	Other transport equipment		32.46	42.98	46.00	-24.5	-6.6
31	Furniture		31.14	31.49	25.88	-1.1	21.7
32	Other manufactured goods		68.34	78.91	59.06	-13.4	33.6
33	Repair and installation services of machinery and equipment		45.99	32.58	32.33	41.2	0.8
D	ELECTRICITY		114.50	93.89	121.36	21.9	-22.6
35	Production and distribution of electricity		114.50	93.89	121.36	21.9	-22.6
E	WATER SUPPLY		88.39	86.53	90.45	2.1	-4.3
36	Treatment and supply services of natural water		88.39	86.53	90.45	2.1	-4.3
MAIN INDUSTRIAL GROUPINGS							
1	Energy		110.12	104.84	115.94	5.0	-9.6
2	Intermediate goods		81.91	84.01	79.58	-2.5	5.6
3	Capital goods		56.20	53.71	51.22	4.6	4.9
4	Consumer Durables		34.20	40.36	34.26	-15.3	17.8
5	Consumer Non-Durables		86.00	80.69	73.95	6.6	9.1

* Provisional data

Note: The indices are rounded up to two decimal figures when published and percentage changes up to one decimal figure when published.

Table 3. Monthly rate of change of the Industrial Production Index*(Working day adjusted data, according to the real number of working days)*

Base year: 2010=100.0

Code	Division	January 2019*	December 2018**	Rate of change (%) Jan. 2019 / Dec. 2018
OVERALL INDEX		91.56	94.35	-3.0
B	MINING AND QUARRYING	50.70	65.27	-22.3
05	Mining of coal and lignite	46.48	64.62	-28.1
06	Extraction of crude petroleum and natural gas	160.55	204.54	-21.5
07	Mining of metal ores	51.16	58.40	-12.4
08	Other mining and quarrying products	49.22	55.80	-11.8
C	MANUFACTURING	88.50	94.97	-6.8
10	Food	86.44	83.34	3.7
11	Beverages	52.55	53.69	-2.1
12	Tobacco products	97.39	81.68	19.2
13	Textiles	53.60	52.69	1.7
14	Wearing apparel	36.74	43.02	-14.6
15	Leather and related products	22.66	31.34	-27.7
16	Wood and cork	23.07	46.94	-50.8
17	Paper and paper products	101.55	87.47	16.1
18	Printing and recording services	45.61	51.23	-11.0
19	Coke and refined petroleum products	130.65	142.49	-8.3
20	Chemicals and chemical products	93.19	82.70	12.7
21	Basic pharmaceutical products and pharmaceutical preparations	166.28	196.61	-15.4
22	Rubber and plastic products	85.19	83.68	1.8
23	Other non-metallic mineral products	47.45	55.33	-14.2
24	Basic metals	140.73	119.29	18.0
25	Fabricated metal products	68.23	74.81	-8.8
26	Computers, electronic and optical products	112.34	184.53	-39.1
27	Electrical equipment	53.43	62.83	-15.0
28	Machinery and equipment n. e. c.	75.40	124.73	-39.6
29	Motor vehicles, trailers and semi-trailers	74.09	113.35	-34.6
30	Other transport equipment	32.46	97.54	-66.7
31	Furniture	31.14	71.51	-56.5
32	Other manufactured goods	68.34	103.40	-33.9
33	Repair and installation services of machinery and equipment	45.99	112.90	-59.3
D	ELECTRICITY	114.50	102.36	11.9
35	Production and distribution of electricity	114.50	102.36	11.9
E	WATER SUPPLY	88.39	85.94	2.8
36	Treatment and supply services of natural water	88.39	85.94	2.8
MAIN INDUSTRIAL GROUPINGS				
1	Energy	110.12	108.50	1.5
2	Intermediate goods	81.91	79.36	3.2
3	Capital goods	56.20	110.48	-49.1
4	Consumer Durables	34.20	67.66	-49.4
5	Consumer Non-Durables	86.00	86.70	-0.8

* Provisional data **Revised data

Note: The indices are rounded up to two decimal figures when published and percentage changes up to one decimal figure when published.

Table 4. Monthly rate of change of the seasonally adjusted Industrial Production Index

Base year: 2010=100.0

Code	Division	January 2019	December 2018	Rate of change (%) Jan. 2019 / Dec. 2018
OVERALL INDEX		99.09	97.66	1.5
B	MINING AND QUARRYING	57.39	71.70	-19.9
05	Mining of coal and lignite	49.74	68.83	-27.7
06	Extraction of crude petroleum and natural gas	158.52	196.85	-19.5
07	Mining of metal ores	65.45	70.23	-6.8
08	Other mining and quarrying products	69.65	69.76	-0.2
C	MANUFACTURING	100.85	99.80	1.1
10	Food	96.48	96.56	-0.1
11	Beverages	84.50	88.95	-5.0
12	Tobacco products	104.52	88.44	18.2
13	Textiles	58.12	60.09	-3.3
14	Wearing apparel	46.20	44.37	4.1
15	Leather and related products	43.44	42.79	1.5
16	Wood and cork	41.77	40.79	2.4
17	Paper and paper products	101.22	100.14	1.1
18	Printing and recording services	54.82	44.94	22.0
19	Coke and refined petroleum products	131.87	138.36	-4.7
20	Chemicals and chemical products	108.39	106.96	1.3
21	Basic pharmaceutical products and pharmaceutical preparations	172.03	165.35	4.0
22	Rubber and plastic products	91.82	95.35	-3.7
23	Other non-metallic mineral products	61.04	61.36	-0.5
24	Basic metals	151.20	145.21	4.1
25	Fabricated metal products	80.71	80.18	0.7
26	Computers, electronic and optical products	130.93	137.56	-4.8
27	Electrical equipment	58.98	63.19	-6.7
28	Machinery and equipment n. e. c.	116.33	97.59	19.2
29	Motor vehicles, trailers and semi-trailers	126.48	59.15	113.8
30	Other transport equipment	54.82	63.90	-14.2
31	Furniture	57.24	56.08	2.1
32	Other manufactured goods	92.23	95.06	-3.0
33	Repair and installation services of machinery and equipment	65.43	62.45	4.8
D	ELECTRICITY	107.28	98.02	9.5
35	Production and distribution of electricity	107.28	98.02	9.5
E	WATER SUPPLY	96.54	94.16	2.5
36	Treatment and supply services of natural water	96.54	94.16	2.5
MAIN INDUSTRIAL GROUPINGS				
1	Energy	107.01	105.26	1.7
2	Intermediate goods	93.39	92.11	1.4
3	Capital goods	79.22	73.93	7.2
4	Consumer Durables	51.41	54.72	-6.1
5	Consumer Non-Durables	100.71	100.14	0.6

Notes:

1. The indices are rounded up to two decimal figures when published and percentage changes up to one decimal figure when published.
2. The whole time-series with seasonally adjusted indices is recalculated every time a new observation is added in the time-series.

Table 5. Evolution of the Overall Industrial Production Index

(Working day adjusted data, according to the real number of working days)

Base year: 2010=100.0

Year and month	Overall Index	Monthly rate of change (%)	Annual rate of change (%)	12-month average indices (moving average)	Rate of change of the 12-month average indices (%)
2017: 1	89.59	-2.6	7.1	91.40	2.7
2	94.55	5.5	10.5	92.15	3.8
3	97.29	2.9	10.9	92.94	5.0
4	91.47	-6.0	0.4	92.97	4.8
5	95.41	4.3	6.8	93.48	5.0
6	99.89	4.7	2.1	93.65	4.5
7	104.03	4.1	3.1	93.91	4.3
8	93.14	-10.5	5.5	94.31	4.7
9	96.54	3.7	4.1	94.62	5.1
10	93.03	-3.6	1.6	94.74	4.6
11	91.82	-1.3	2.0	94.89	4.6
12	93.18	1.5	1.3	94.99	4.5
Annual average	94.99	–	–	94.99	4.5
2018: 1	88.56	-5.0	-1.2	94.91	3.8
2	92.79	4.8	-1.9	94.76	2.8
3	98.45	6.1	1.2	94.86	2.1
4	93.33	-5.2	2.0	95.01	2.2
5	97.03	4.0	1.7	95.15	1.8
6	101.05	4.1	1.2	95.25	1.7
7	106.08	5.0	2.0	95.42	1.6
8	94.11	-11.3	1.0	95.50	1.3
9	98.30	4.5	1.8	95.64	1.1
10	92.33	-6.1	-0.7	95.59	0.9
11	95.65	3.6	4.2	95.91	1.1
12**	94.35	-1.4	1.3	96.00	1.1
Annual average	96.00	–	–	96.00	1.1
2019: 1*	91.56	-3.0	3.4	96.25	1.4

* Provisional data ** Revised data

Note: The indices are rounded up to two decimal figures when published and percentage changes up to one decimal figure when published.

Table 6. Monthly evolution of the seasonally adjusted Overall Industrial Production Index and Main Industrial Groupings

Base year: 2010=100.0

Year and month		Overall Index		Energy		Intermediate goods		Capital goods		Consumer durables		Consumer non-durables	
		Index	Monthly rate of change (%)	Index	Monthly rate of change (%)	Index	Monthly rate of change (%)	Index	Monthly rate of change (%)	Index	Monthly rate of change (%)	Index	Monthly rate of change (%)
2017:	1	96.73	2.3	112.84	3.1	90.89	5.7	74.35	2.5	51.53	-4.0	87.38	-2.0
	2	96.50	-0.2	105.83	-6.2	93.34	2.7	80.27	8.0	56.88	10.4	92.44	5.8
	3	95.85	-0.7	100.99	-4.6	94.96	1.7	76.83	-4.3	59.98	5.5	95.91	3.8
	4	92.85	-3.1	100.91	-0.1	90.27	-4.9	69.00	-10.2	53.82	-10.3	91.66	-4.4
	5	93.98	1.2	100.42	-0.5	92.72	2.7	74.42	7.9	59.62	10.8	92.58	1.0
	6	93.51	-0.5	99.60	-0.8	91.78	-1.0	75.44	1.4	57.45	-3.6	92.84	0.3
	7	93.97	0.5	98.59	-1.0	92.74	1.1	81.47	8.0	56.27	-2.1	93.76	1.0
	8	95.90	2.0	100.85	2.3	98.42	6.1	71.52	-12.2	54.68	-2.8	94.50	0.8
	9	94.04	-1.9	99.45	-1.4	93.44	-5.1	71.46	-0.1	57.03	4.3	94.30	-0.2
	10	95.51	1.6	102.31	2.9	93.22	-0.2	76.01	6.4	58.18	2.0	94.74	0.5
	11	94.61	-0.9	105.06	2.7	90.93	-2.5	72.95	-4.0	57.31	-1.5	90.51	-4.5
	12	96.37	1.9	102.55	-2.4	93.03	2.3	76.13	4.4	63.09	10.1	97.40	7.6
Annual average		94.98		102.45		92.98		74.99		57.15		93.17	
2018:	1	96.12	-0.3	101.92	-0.6	95.83	3.0	76.73	0.8	60.60	-3.9	94.76	-2.7
	2	94.70	-1.5	101.60	-0.3	90.01	-6.1	74.87	-2.4	60.22	-0.6	95.97	1.3
	3	97.09	2.5	105.02	3.4	95.54	6.2	76.06	1.6	58.20	-3.3	94.47	-1.6
	4	94.54	-2.6	100.09	-4.7	92.25	-3.4	81.46	7.1	59.95	3.0	93.94	-0.6
	5	95.53	1.0	100.19	0.1	93.74	1.6	77.83	-4.5	57.73	-3.7	96.93	3.2
	6	94.71	-0.9	100.96	0.8	92.41	-1.4	75.01	-3.6	55.94	-3.1	94.89	-2.1
	7	95.59	0.9	99.52	-1.4	94.82	2.6	74.43	-0.8	54.70	-2.2	98.02	3.3
	8	96.94	1.4	104.56	5.1	96.74	2.0	80.68	8.4	52.86	-3.4	92.77	-5.4
	9	96.04	-0.9	104.45	-0.1	92.79	-4.1	78.70	-2.5	51.61	-2.4	93.89	1.2
	10	94.91	-1.2	101.56	-2.8	92.14	-0.7	74.08	-5.9	51.39	-0.4	95.50	1.7
	11	98.61	3.9	104.48	2.9	94.52	2.6	77.96	5.2	50.50	-1.7	101.79	6.6
	12	97.66	-1.0	105.26	0.7	92.11	-2.5	73.93	-5.2	54.72	8.4	100.14	-1.6
Annual average		96.04		102.47		93.57		76.81		55.70		96.09	
2019:	1	99.09	1.5	107.01	1.7	93.39	1.4	79.22	7.2	51.41	-6.1	100.71	0.6

Notes:

1. The indices are rounded up to two decimal figures when published and percentage changes up to one decimal figure when published.
2. The whole time-series with seasonally adjusted indices is recalculated every time a new observation is added in the time-series.

METHODOLOGICAL NOTES

Generally	The Industrial Production Index (IPI) is compiled since 1959.
Purpose of the index	The IPI is an important business cycle indicator, which shows the monthly activity in the Mining and Quarrying, Manufacturing, Electricity and Water Supply divisions. More specifically, the objective of the Industrial Production Index is to compare the magnitude (volume) of the output in the current month with the corresponding output in any given period which is considered as base period. The IPI shows the evolution of the value added of the production factors cost, at constant prices.
Legal basis	The compilation of the IPI is governed by Council Regulation (EC) No 1165/98 concerning short-term statistics. Furthermore, the IPI is governed by Regulation (EC) No 1893/2006 of the European Parliament and of the Council, by Commission Regulation (EC) No 656/2007 and by Council Regulation (EC) No 451/2008.
Reference period	Month.
Base year	2010=100.0.
Revision	The IPI is a fixed base index. Pursuant to the provisions of Council Regulation No 1165/98 concerning short-term statistics, the index is updated every five (5) years, in years ending in 0 or 5.
Statistical classifications	At the level of branches of economic activities, the classification NACE Rev.2 of Eurostat was used (Regulation No 1893/2006), while at the level of main industrial groups, the allocation of two-digit and three-digit NACE Rev. 2 headings to categories of aggregate classification was used, in accordance with Council Regulation No 656/2007. At product level, the classification CPA 2008 of Eurostat was used, according to Council Regulation No 451/2008.
Geographical coverage	The Index covers the whole Country.
Coverage of economic activities	The index covers all the sections of industry, the main industrial groups, all levels of economic activities (divisions, groups and classes) and the level of products.
Statistical survey	The data are collected from a sample of 1,338 enterprises. The survey covers 354 products and the measurement of the surveyed products is made in terms of output quantities or in terms of production value or turnover, according to the specific situation in each branch of economic activity.
Seasonal adjustment	Seasonal adjustment is the procedure followed to remove the impact of seasonality on the time-series (i.e. the impact of monthly effects, e.g. holidays, tourist period etc), in order to improve comparability over time. The method used is the TRAMO-SEATS method with the use of JDemetra+ 2.0.0. For the seasonal adjustment of the Industrial Production Index at 2-digit level of NACE Rev.2, at section level (B – Mining and Quarrying, C – Manufacturing, D – Electricity and E – Water Supply) and for the Main Industrial Groupings (MIGs), the direct approach is applied, namely each time-series is seasonally adjusted independently. For the overall Industrial Production Index, the indirect approach is applied, with the seasonally adjusted IPI being computed by aggregating the seasonally adjusted MIGs using appropriate weights.
Publication of data	The IPI with the new base year (2010) is released since August 2014, with June 2014 as the first reference month. Data with base year 2010=100.0 are available from January 2000 onwards.
References	More information about the methodology concerning the compilation and calculation of the index and for the time series is available on the website of the Hellenic Statistical Authority (ELSTAT) (http://www.statistics.gr/en/statistics/-/publication/DKT21/-).