



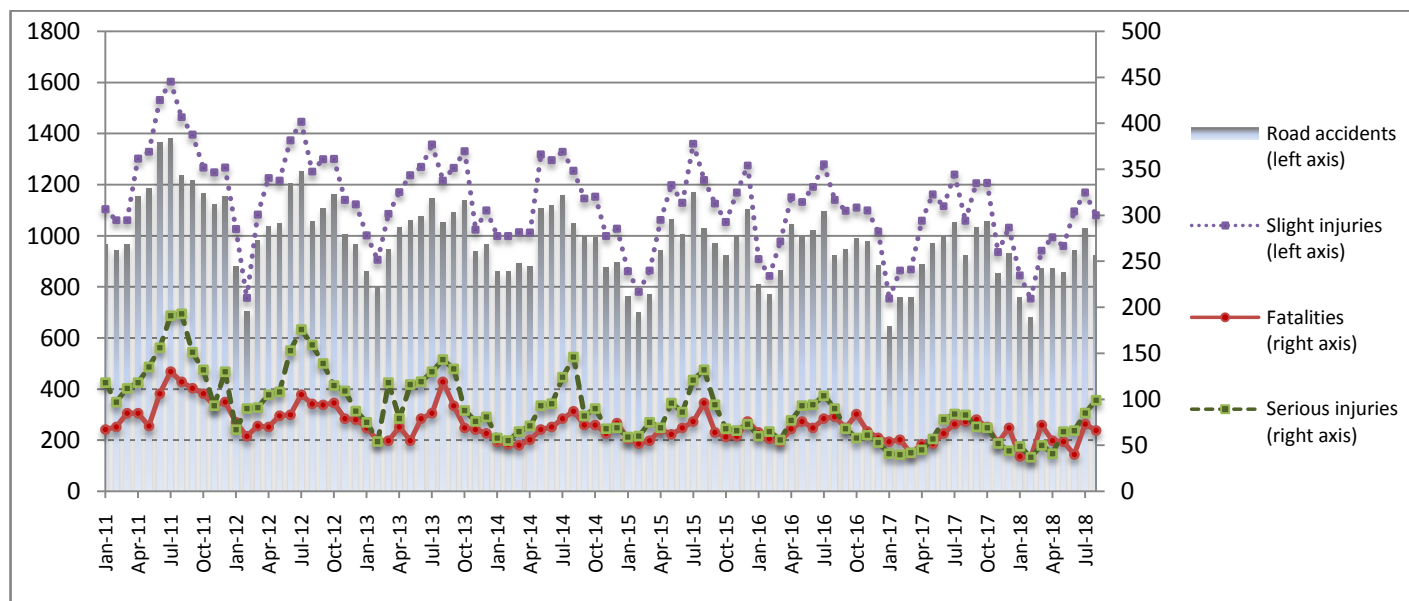
PRESS RELEASE

ROAD ACCIDENTS: August 2018

The Hellenic Statistical Authority (ELSTAT) announces provisional¹ data on Road Accidents for August 2018. In particular, the road traffic accidents which occurred in Greece, resulting in death or injury, increased by 0.1% in comparison with the corresponding month of 2017 (924 road accidents in August 2018, against 923 road accidents in August 2017).

The casualties of the injury-causing accidents that occurred in August 2018 were as follows: 66 deaths, 99 serious injuries and 1,080 slight injuries. In contrast, in August 2017 the corresponding figures were: 76 deaths, 83 serious injuries and 1,059 slight injuries. Therefore, road accident casualties in August 2018 decreased by 13.2% for deaths, increased by 19.3% for serious injuries and increased by 2.0% for slight injuries.

**Graph 1: Road traffic accidents and casualties,
January 2011 - August 2018²**



Provisional data: Nov 17 – Aug 18

Information:

Social Statistics Division

Justice and Public Order Statistics Section

D. Athanasopoulou

Tel: +30 213 1352767, Fax : +30 213 1352764

e-mail: d.athanasopoulou@statistics.gr

¹ Data for the reference year are provisional until the finalisation of the annual data, which become final 10 months after the end of the reference year. During these 10 months the provisional data are updated on the basis of the data of the Road Accident Forms which are transmitted to ELSTAT by Police Authorities.

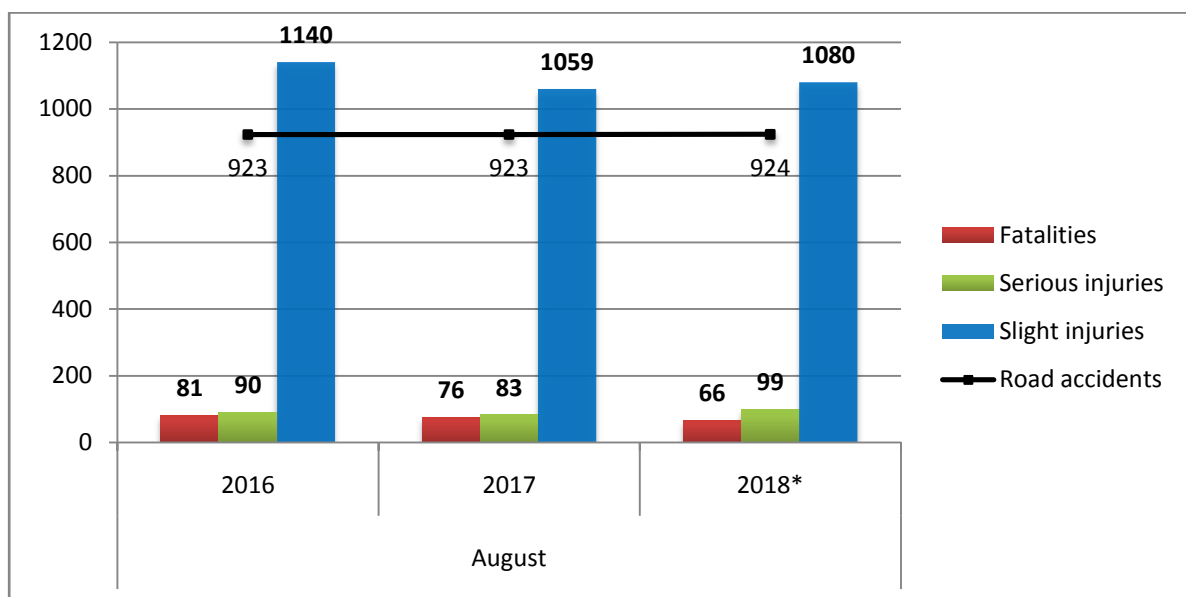
² It should be noted that the January - October 2017 data were revised due to the processing of the questionnaires from Attiki Region, which had not been submitted in time by the Police Authorities.

Table 1: Road traffic accidents and casualties, August 2016-2018*

	August				
	2016	2017	2017/2016 (%)	2018*	2018*/2017 (%)
Road accidents	923	923	0.0%	924	0.1%
Fatalities	81	76	-6.2%	66	-13.2%
Total injuries	1,230	1,142	-7.2%	1,179	3.2%
Serious injuries	90	83	-7.8%	99	19.3%
Slight injuries	1,140	1,059	-7.1%	1,080	2.0%

* Provisional data

Graph 2: Road traffic accidents and casualties, August 2016-2018*



* Provisional data

Table 2: Road traffic accidents and casualties, by region and department, August 2017 – 2018*

Region and Department	Road accidents			Fatalities			Serious injuries			Slight injuries		
	2017	2018*	%	2017	2018*	%	2017	2018*	%	2017	2018*	%
Greece Total	923	924	0.1%	76	66	-13.2%	83	99	19.3%	1,059	1,080	2.0%
Anatoliki Makedonia, Thraki (East Macedonia and Thrace)	44	51	15.9%	5	1	-80.0%	12	13	8.3%	55	59	7.3%
Drama	2	9	350.0%	1	0		0	3		2	10	
Evros	9	13	44.4%	1	0		2	1		8	17	
Kavala	19	16	-15.8%	3	0		5	6		28	16	
Xanthi	7	7	0.0%	0	0		4	1		7	8	
Rodopi	7	6	-14.3%	0	1		1	2		10	8	
Kentriki Makedonia (Central Macedonia)	159	126	-20.8%	7	10	42.9%	9	8	-11.1%	186	176	-5.4%
Imathia	5	6	20.0%	0	1		0	0		6	7	
Thessaloniki	109	85	-22.0%	2	3		1	1		131	121	
Kilkis	5	4	-20.0%	0	0		0	2		5	3	
Pella	2	1	-50.0%	0	0		0	1		2	0	
Pieria	5	3	-40.0%	2	1		2	1		2	3	
Serres	5	5	0.0%	1	3		0	1		4	14	
Chalkidiki	28	22	-21.4%	2	2		6	2		36	28	
Dytiki Makedonia (West Macedonia)	7	5	-28.6%	4	0	-100.0%	1	0	-100.0%	5	7	40.0%
Grevena	1	0	-100.0%	1	0		0	0		1	0	
Kastoria	2	0	-100.0%	1	0		1	0		2	0	
Kozani	3	5	66.7%	1	0		0	0		2	7	
Florina	1	0	-100.0%	1	0		0	0		0	0	
Ipeiros (Epirus)	11	24	118.2%	1	2	100.0%	3	4	33.3%	12	30	150.0%
Arta	1	0	-100.0%	0	0		1	0		3	0	
Thesprotia	4	9	125.0%	1	0		1	2		2	15	
Ioannina	3	9	200.0%	0	0		1	2		2	11	
Preveza	3	6	100.0%	0	2		0	0		5	4	
Thessalia (Thessaly)	18	21	16.7%	5	4	-20.0%	4	3	-25.0%	24	28	16.7%
Karditsa	5	6	20.0%	0	1		1	1		6	11	
Larissa	7	7	0.0%	3	2		0	1		8	7	
Magnissia	3	2	-33.3%	1	0		1	0		5	5	
Trikala	3	6	100.0%	1	1		2	1		5	5	
Ionian Nisia (Ionian Islands)	32	19	-40.6%	7	0	-100.0%	2	8	300.0%	30	14	-53.3%
Zakynthos	8	1	-87.5%	4	0		0	1		4	0	
Kerkyra	8	7	-12.5%	0	0		1	4		10	4	
Kefallinia	6	2	-66.7%	1	0		0	0		7	2	
Lefkada	10	9	-10.0%	2	0		1	3		9	8	

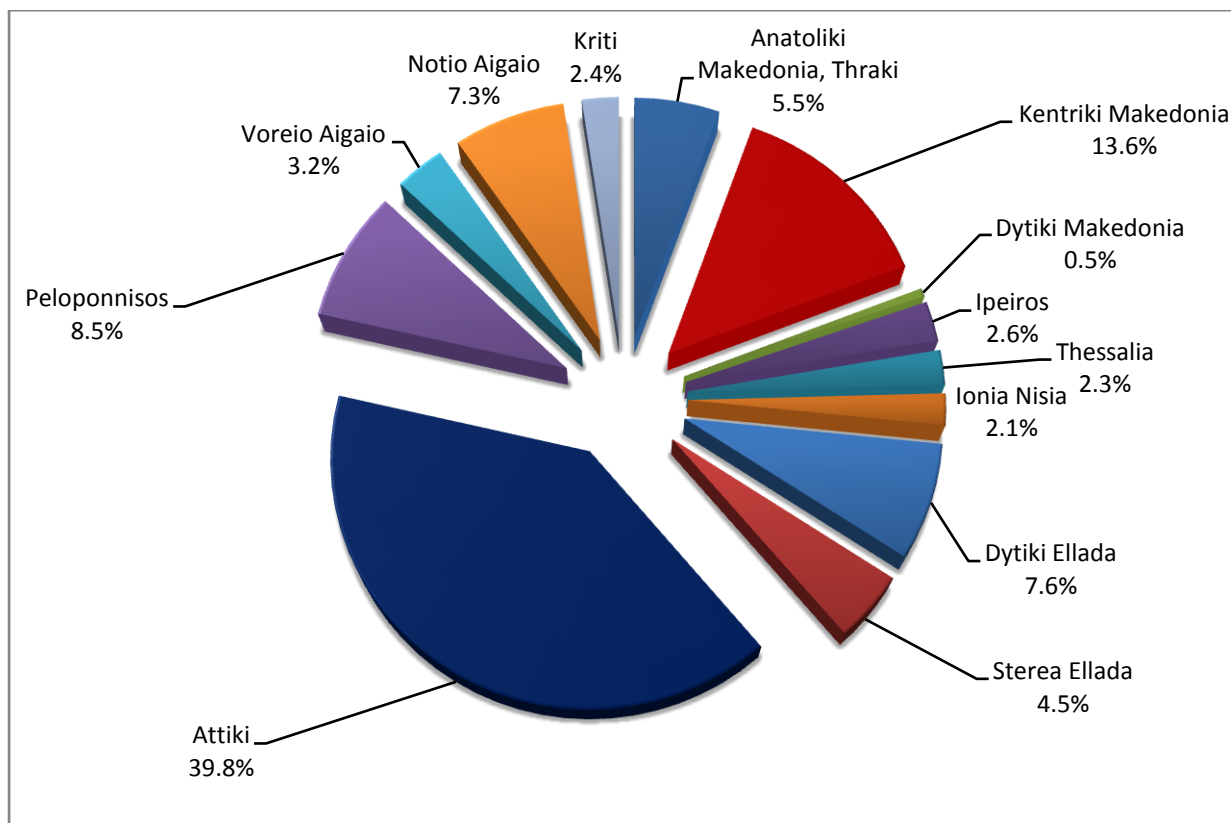
* Provisional data

Table 2: Road traffic accidents and casualties, by region and department, August 2017 – 2018* (Continued)

Region and Department	Road accidents			Fatalities			Serious injuries			Slight injuries		
	2017	2018*	%	2017	2018*	%	2017	2018*	%	2017	2018*	%
Dytiki Ellada (West Greece)	58	70	20.7%	6	12	100.0%	4	8	100.0%	72	75	4.2%
Etolia & Akarnania	20	26	30.0%	3	5		1	5		20	29	
Achaia	29	34	17.2%	1	5		1	2		44	38	
Ilia	9	10	11.1%	2	2		2	1		8	8	
Stereia Ellada	57	42	-26.3%	6	3	-50.0%	4	5	25.0%	68	59	-13.2%
Viotia	8	3	-62.5%	3	0		1	0		10	4	
Evia	23	20	-13.0%	1	2		2	2		26	29	
Evrytania	3	1	-66.7%	0	0		0	1		3	2	
Fthiotida	20	15	-25.0%	2	1		1	2		26	20	
Fokida	3	3	0.0%	0	0		0	0		3	4	
Attiki (Attica)	363	368	1.4%	13	19	46.2%	18	14	-22.2%	412	415	0.7%
Peloponnisos (Peloponnese)	59	79	33.9%	7	6	-14.3%	7	7	0.0%	72	95	31.9%
Argolida	14	12	-14.3%	0	0		1	0		16	13	
Arkadia	3	8	166.7%	1	1		0	0		9	11	
Korinthia	22	24	9.1%	4	0		4	5		21	27	
Lakonia	9	11	22.2%	2	2		2	1		7	11	
Messinia	11	24	118.2%	0	3		0	1		19	33	
Voreio Aigaio (North Aegean)	29	30	3.4%	1	2	100.0%	2	6	200.0%	40	33	-17.5%
Lesvos	7	12	71.4%	1	2		1	1		7	13	
Samos	14	13	-7.1%	0	0		1	1		20	19	
Chios	8	5	-37.5%	0	0		0	4		13	1	
Notio Aigaio (South Aegean)	62	67	8.1%	5	2	-60.0%	11	14	27.3%	62	73	17.7%
Dodekanissos	32	29	-9.4%	3	1		3	7		33	25	
Kyklades	30	38	26.7%	2	1		8	7		29	48	
Kriti (Crete)	24	22	-8.3%	9	5	-44.4%	6	9	50.0%	21	16	-23.8%
Iraklio	6	11	83.3%	3	2		3	5		6	7	
Lassithi	4	2	-50.0%	1	0		1	0		3	2	
Rethymno	4	3	-25.0%	1	2		0	0		3	1	
Chania	10	6	-40.0%	4	1		2	4		9	6	

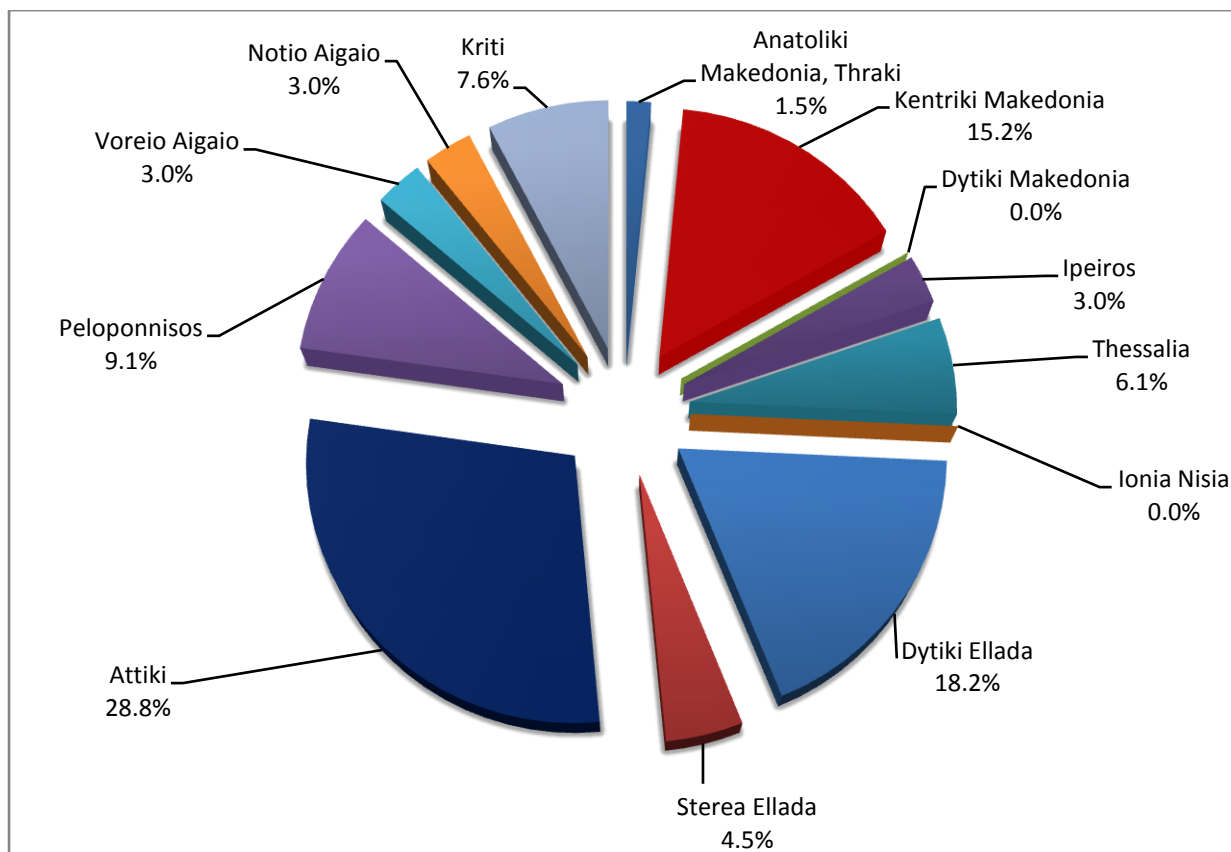
* Provisional data

**Graph 3: Road traffic accidents by region,
August 2018 ***



* Provisional data

**Graph 4: Fatalities by region,
August 2018 ***



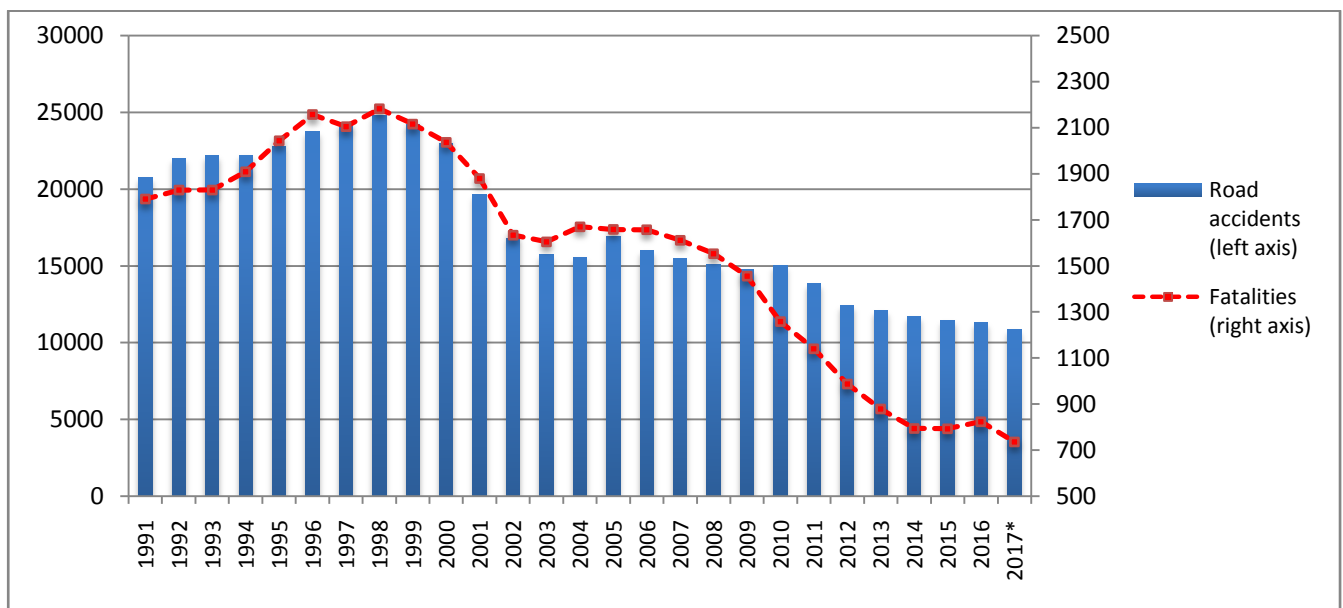
* Provisional data

Table 3: Road traffic accidents and casualties for the period January - August 2016, 2017 and 2018*

	2016		2017 (see footnote 2, page 1)		2018 *
	January - August	Total year	January - August	Total year*	January - August
Road Accidents	7,522	11,318	6,986	10,859	6,932
Annual Change (%)			-7.1%	-4.1%	-0.8%
Fatalities	548	824	466	736	435
Annual Change (%)			-15.0%	-10.7%	-6.7%
Serious injuries	639	879	470	705	492
Annual Change (%)			-26.4%	-19.8%	4.7%
Slight injuries	8,623	12,946	8,123	12,504	7,839
Annual Change (%)			-5.8%	-3.4%	-3.5%

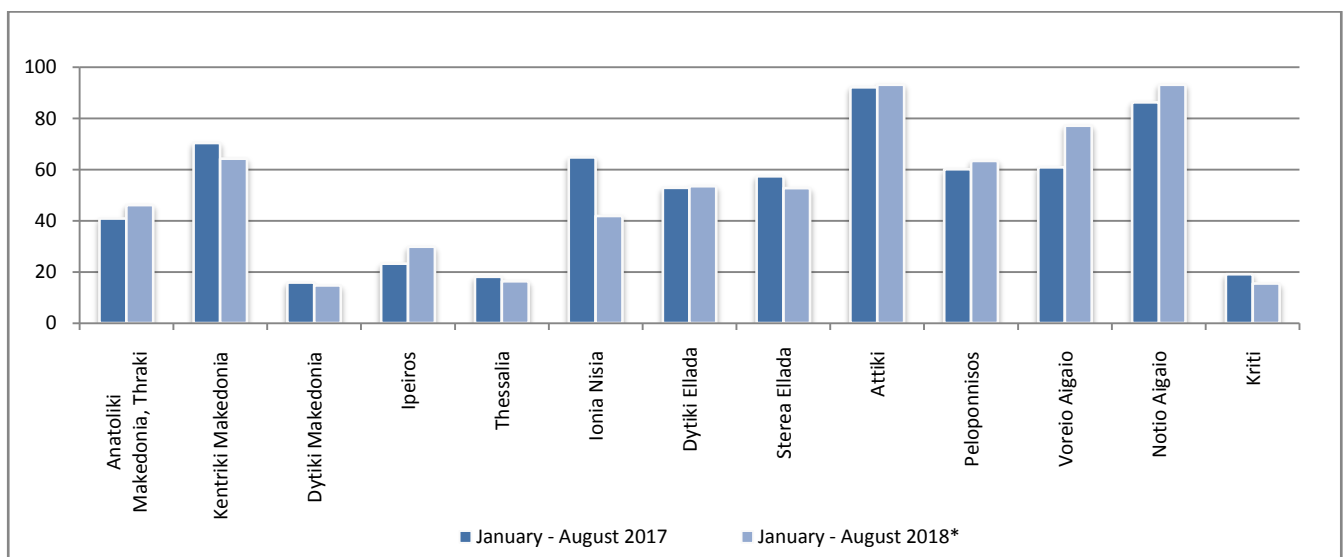
* Provisional data

Graph 5: Total road traffic accidents and fatalities, 1991-2017*



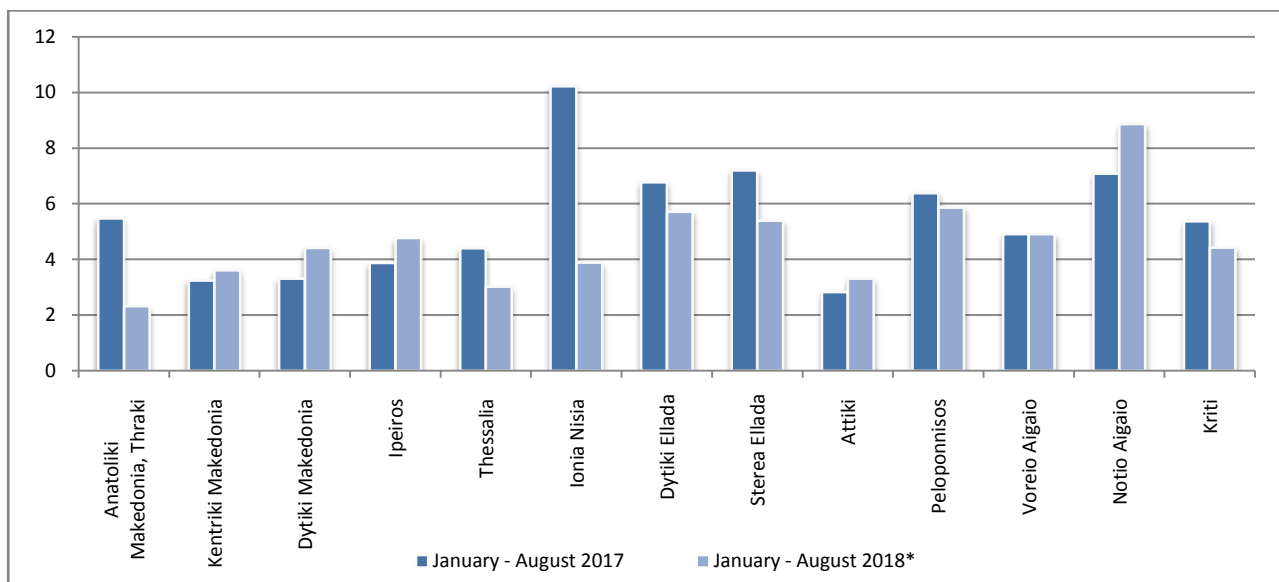
* Provisional data: Nov 17 – Dec 17

Graph 6: Road accidents per 100,000 inhabitants

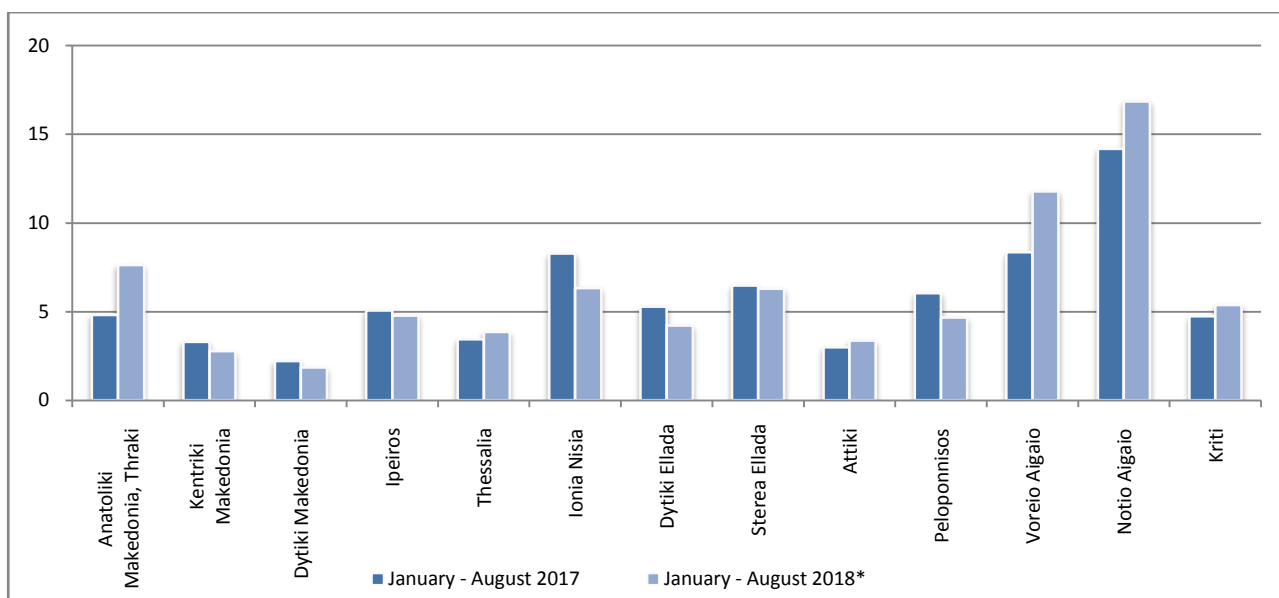


* Provisional data

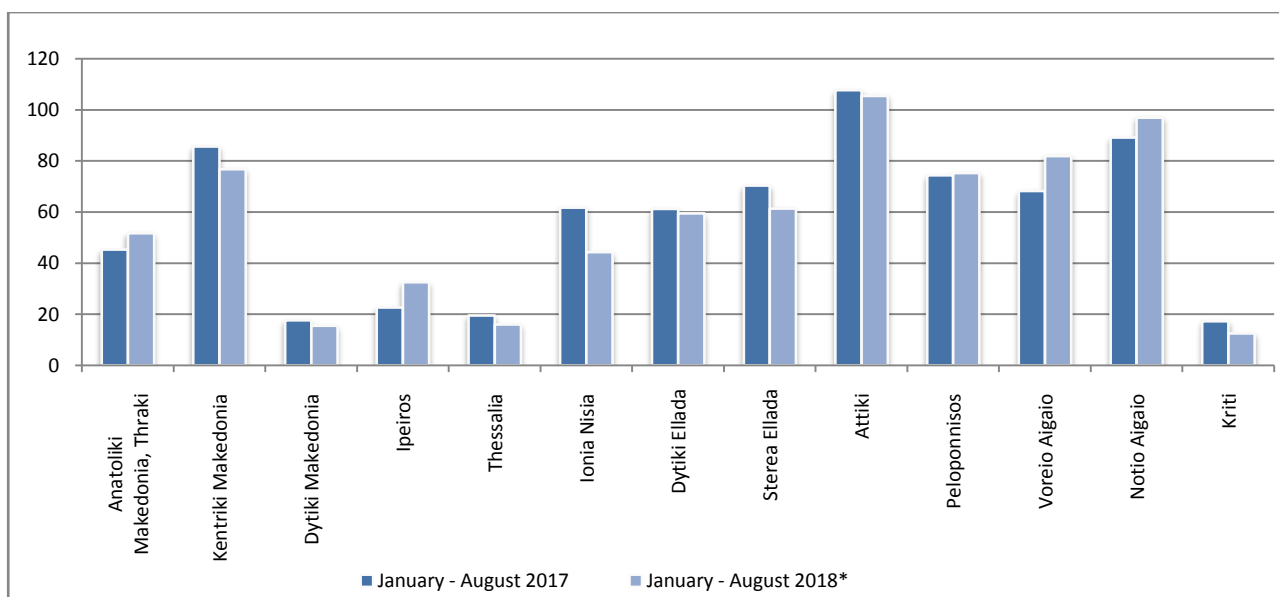
Graph 7: Fatalities per 100,000 inhabitants



Graph 8: Serious injuries per 100,000 inhabitants



Graph 9: Slight injuries per 100,000 inhabitants



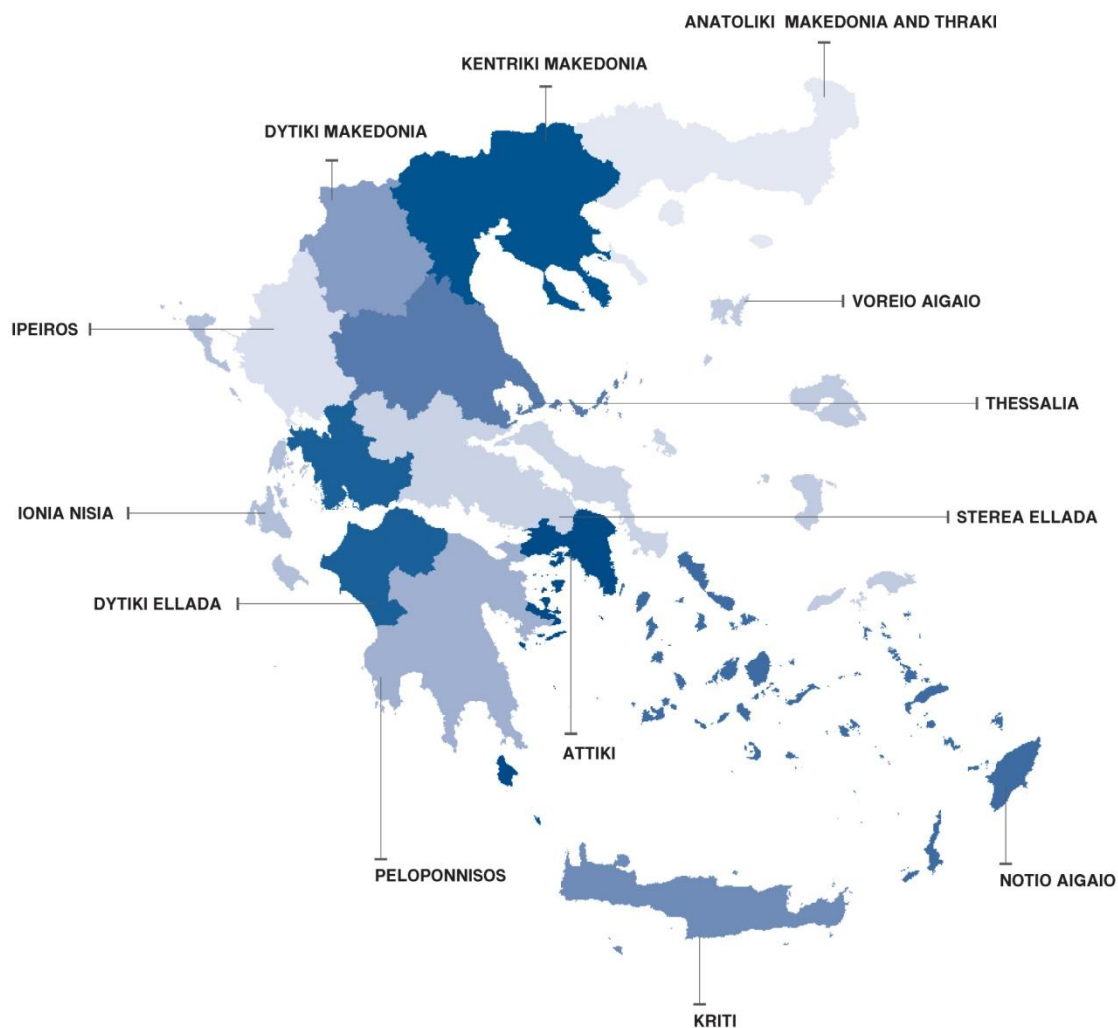
* Provisional data

Explanatory Notes

Survey on Road Accidents The survey on road accidents is conducted on a monthly basis and it records, for each department of Greece and for each month separately, the number of accidents resulting in death or injury, as well as the number of persons injured by categories (drivers, passengers, pedestrians).

On a yearly basis, road accidents are further analyzed. The competent agencies for filling in/collecting the forms on road accidents are the local Police Authorities and the local Port Authorities of Greece.

The lower level of analysis for the place where an injury road accident occurred is the Municipal – Local Commune, which is described by a 8-digit geographic code. Data are collected on a monthly basis. The main variables are the following: place of accident, kind of road, casualties, conditions of road surface and type of road.



Legal basis The Survey on Road Traffic Accidents is governed by Council Decision 93/704 of the European Community.

Reference Period Monthly.

Availability of Data Provisional data are available 2 months after the reference month.
Final data are available 10 months after the reference year.

National Definitions	<p>Road accident (injury accident): Any accident involving at least one road motor vehicle in motion on a public road or square to which the public has access (excluding yards, industrial sites or vehicle depot of public transport enterprises), resulting in at least one injured or killed person. Accidents with only material damages are not included.</p> <p>Fatality (Death): Any person killed immediately or dying within 30 days as a result of an injury accident (This national definition applies since 01.01.1996)</p> <p>Person injured: Any person who sustained an injury as result of an injury accident, and who normally needs medical treatment.</p> <p>Serious injury: Any person who sustained an injury as result of an injury accident, such as brain damages, mutilation, multiple injuries, which may result in lack of awareness or which are life-threatening.</p> <p>Slight injury: Any person injured who sustained minor and not life-threatening injuries.</p> <p>Vehicle: Include motor vehicles, trolleybuses, motorcycles, bicycles, motorbikes, agricultural and road making machines, animal and hand-drawn vehicles. Railway vehicles are excluded, unless the road accident involves at least one of the aforementioned types of vehicles and therefore, railway vehicles are considered vehicles.</p>
Methodology	<p>The forms of the survey are filled in by the local Police Authorities and the local Port Authorities as well.</p>
References	<p>More information about road accidents is available on ELSTAT's website and more specifically at the link: www.statistics.gr > Population & Social Conditions > Accidents > Road Traffic Accidents. It should be noted that previous press releases and time series are available on ELSTAT's website: www.statistics.gr</p>