



HELLENIC REPUBLIC

HELLENIC STATISTICAL AUTHORITY

Piraeus, 26 October 2016

PRESS RELEASE

HOSPITAL CENSUS, 2014

The Hellenic Statistical Authority (ELSTAT) announces, for the first time through this Press Release, data on hospitals in Greece on the basis of the annual census survey on hospitals, for the year 2014.

In 2014 the number of hospitals in Greece amounted to 283, recording a 2.4% decrease in comparison with 2013.

On the basis of the available data on the legal status of hospitals, most of the hospitals (54.8% in 2014 compared with 55.5% in 2013) are private (Table 1, Graph 1).

Table 1. Hospitals by legal status and specialty, 2011-2014

YEAR	LEGAL ENTITIES OF PRIVATE LAW	HOSPITAL UNITS OF LEGAL ENTITIES OF PUBLIC LAW	PRIVATE CLINICS	TOTAL	GENERAL	SPECIALIZED	COMBINED SPECIALTIES
2011	5	141	168	314	190	111	13
2012	5	133	164	302	187	106	9
2013	4	125	161	290	178	103	9
2014	4	124	155	283	176	101	6

Information

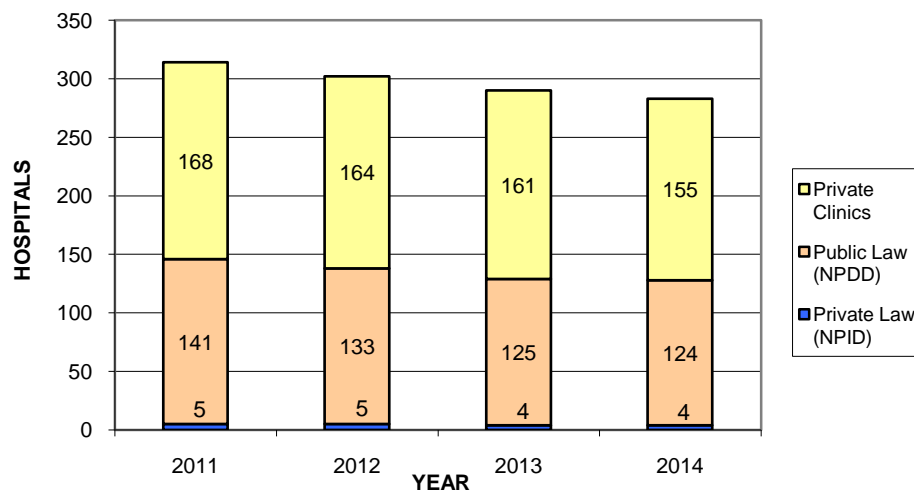
Division of Social Statistics
Section of Health and Social Security and Protection
Konstantinos Giasafakis, Alexandra Zografou

Tel: +30 213 135 2746

Fax: +30 213 135 2397

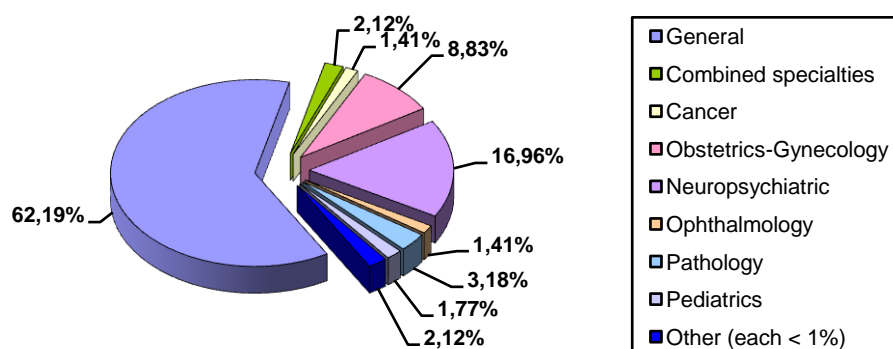
E-mail: social_stat@statistics.gr

Graph 1. Hospitals by legal status, 2011-2014



During the period 2001-2014 the number of hospitals in Greece has been recording a downward trend and more specifically, the number of hospitals decreased by 3.8% in 2012-2011, by 4.0% in 2013-2012 and by 2.4% in 2014-2013. This trend is mainly on account of: a) the abolishment of hospitals of IKA-ETAM (hospitals run by the Social Insurance Institute -Law 3918/2011) intended for in-patient hospitalization, b) integration of Psychiatric Hospitals into the Public Hospitals of the same regional unit, as psychiatric departments of these public hospitals and c) the discontinuation of the operation of some private clinics. As regards hospital specialties, 62.2% of hospitals are General hospitals, while 35.7% are Specialized hospitals. The majority of Specialized hospitals are Neuropsychiatric and Obstetrics-Gynecology hospitals (Table 1, Graph 2).

Graph 2. Hospitals by specialty, 2014

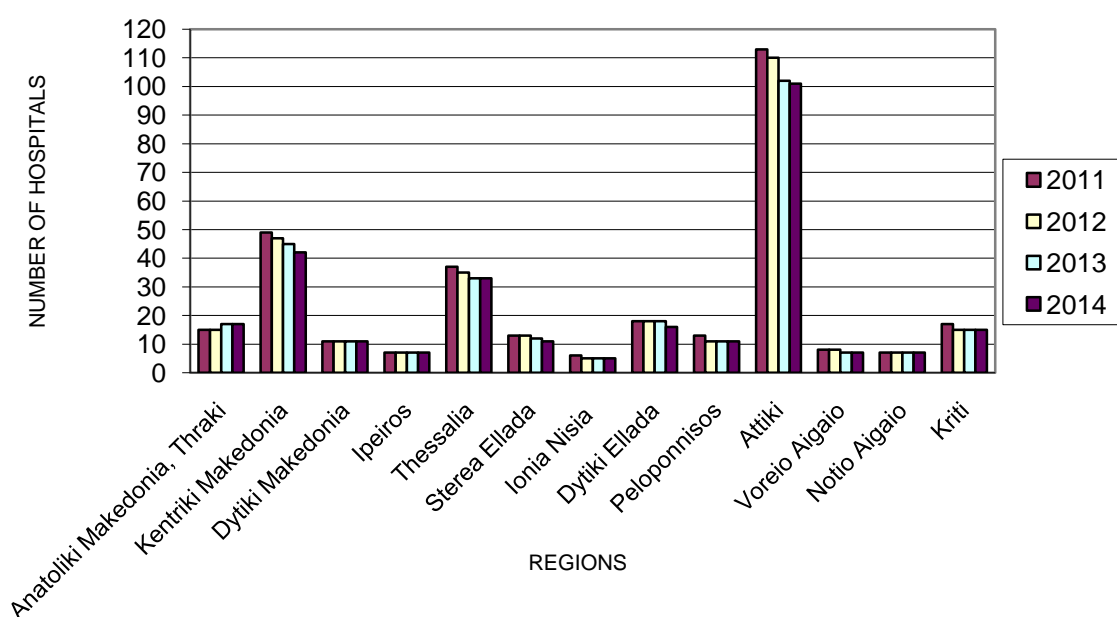


As regards the percentage distribution of hospitals into the 13 Regions of Greece, it is observed that most of the hospitals (35.7% of the total number of hospitals all over the country) are located in Attiki, followed by Kentriki Makedonia (14.8%), Thessalia (11.7%) and Anatoliki Makedonia, Thraki (6.0%). The smallest number of hospitals is recorded in the islands (Regions of Ionia Nisia, Voreio Aigaio and Notio Aigaio) and in Ipeiros, corresponding, for the four abovementioned Regions, to 9.2% of the total number of hospitals in Greece, in 2014 (Table 2, Graph 3).

Table 2. Hospitals by Region (NUTS 2), 2011-2014

Regions (NUTS 2)	2011	2012	2013	2014	Percentage distribution
Total	314	302	290	283	100%
Attiki	113	110	102	101	35.7%
Voreio Aigaio	8	8	7	7	2.5%
Notio Aigaio	7	7	7	7	2.5%
Kriti	17	15	15	15	5.3%
Anatoliki Makedonia, Thraki	15	15	17	17	6.0%
Kentriki Makedonia	49	47	45	42	14.8%
Dytiki Makedonia	11	11	11	11	3.9%
Ipeiros	7	7	7	7	2.5%
Thessalia	37	35	33	33	11.7%
Stereia Ellada	13	13	12	11	3.9%
Ionia Nisia	6	5	5	5	1.8%
Dytiki Ellada	18	18	18	16	5.7%
Peloponnisos	13	11	11	11	3.9%

Graph 3. Distribution of hospitals by Region (NUTS 2), 2011-2014



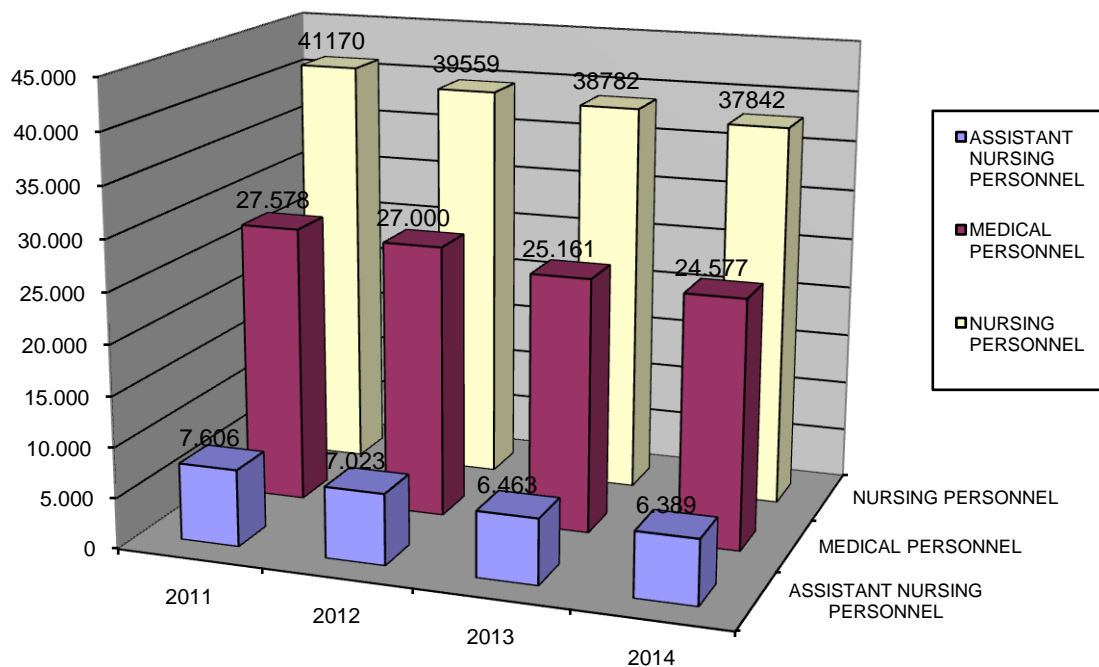
During the period 2011-2014, a downward trend is observed in the number of available in-patient hospitalization beds, while the corresponding number of day-care beds has been growing (Table 3).

Table 3. Number of hospital beds by type, 2011-2014

Year	In-patient hospitalization beds	Day-care beds
2011	49,692	2,674
2012	49,100	2,993
2013	46,510	3,022
2014	46,160	3,548

Finally, during the period 2011-2014, a decrease is observed in the Medical Personnel employed in the hospitals of Greece. A similar trend is also recorded for Nursing Personnel, as well as for Assistant Nursing Personnel of hospitals (i.e. ancillary paramedical staff) (Graph 4).

Graph 4. Hospital personnel by personnel category, 2011-2014



EXPLANATORY NOTES

Hospital Census

The Hospital Census is conducted on a yearly basis. The data are presented at the level of Greece total and at the level of NUTS 2 Regions, aiming at covering national needs in statistical information.

Reference period

The data refer to the hospitals and clinics on the 31th of December of the reference year.

Coverage

The survey covers all the hospitals at NUTS 1, NUTS 2 and NUTS 3 levels, in accordance with Regulation 1319/2013.

Time coverage

The survey has been conducted since 1992

Definition of basic variables

Bed capacity

Bed capacity is distinguished in: the Legal Bed Capacity (on the basis of the Organisation of the Hospital or the operation license of the clinic) and the Available Beds which are the number of beds available for hospitalization. There are in-patient hospitalization beds and day-care beds. In addition, the beds are presented by specialty department of the hospital, namely Pathology Surgery, Psychiatric etc. or trans-specialty.

Medical personnel

The medical specialties of the personnel are as follows : Hematologists, Radiologists, Allergists, General Pathologists, Dermatologists, Venereologists, Occupational Health specialists, Cardiologists, Social Medicine, Obstetricians-Gynecologists, Biopathologists (former Microbiologists), Neurologists, Dentists, Orthopedics, Urologists, Ophthalmologists, Physicians, Pediatricians, Language Pathologists, Pulmonologists, Surgeons of general surgery, Pediatric surgeons, Psychiatrists, Otolaryngologists, Internists and physicians with no specialty.

Non-medical personnel

The categories of non-medical personnel are: Administrative personnel, Nursing personnel, Paramedical personnel, Social care personnel, Organisation-Informatics personnel, Technical personnel, Food and nutritional care personnel, Administrative care personnel.

Methodology

Data derive, on a census basis, from the local units which fill in a specially designed questionnaire collecting data on the hospital characteristics, (beds, medical and non-medical personnel, medical equipment, etc.) The data are collected by the Health and Social Security and Protection Statistics Section of ELSTAT from the hospitals and clinics all over Greece. The reference basis is the Hospital Register of ELSTAT, where each unit has a unique identification code, a geographical code, address, etc. The Register is updated with any changes (creation of new units, abolishment of units, etc) Furthermore, in case a private unit is idle (e.g. on account of renovation, provisional withdrawal of operation license, etc) this unit is not included in the total number of hospitals.

References

The data of the survey are made available concomitantly to all interested parties through the tables which are posted on the website of ELSTAT at the link *Statistics>Population and Social Conditions> Health>Health Care>Hospitals and local health centres*. Users who want to have more detailed data, or data that are not available on the website can submit to ELSTAT a request at the following e-mail address:

data.dissem@statistics.gr