



**HELLENIC REPUBLIC**  
**HELLENIC STATISTICAL**  
**AUTHORITY**



Peiraeus, 31/01/2011

**PRESS RELEASE**

Population increased by 0,4 %

**VITAL STATISTICS 2009**

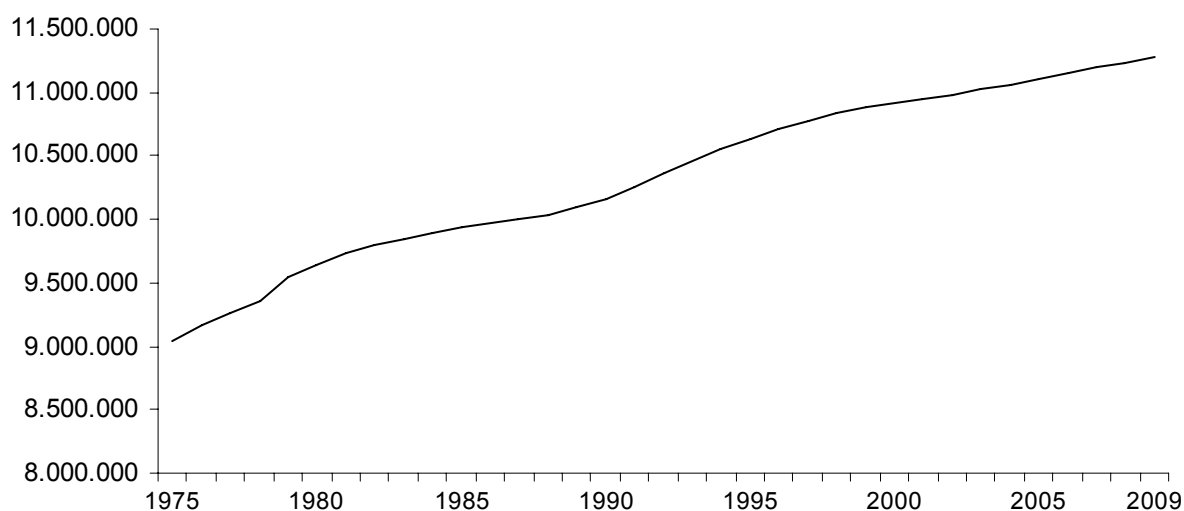
The population of Greece estimated on 1 January 2010 came up to 11.305.118 people. In comparison with the 11.260.402 people, which was the population estimated on 1 January 2009, the population recorded a 0,4% increase, or else an increase by 44.716 persons.

This increase is attributed to the natural increase by 9.617 persons, as well as to the net migration, estimated at 35.099 persons (table 1, graph 1).

In the graph 2 the age pyramid on 30 June 2009 is presented.

**Graph 1**

**Evolution of the population of Greece 1975 - 2009**



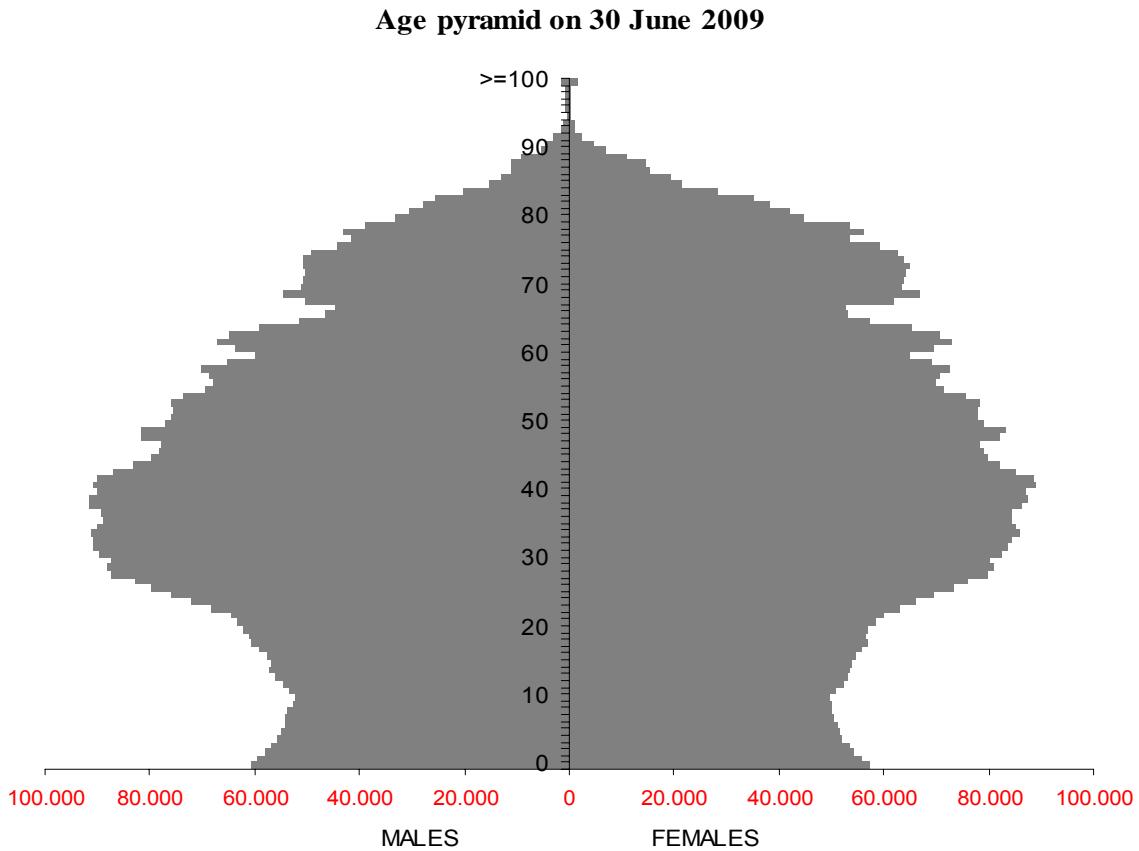
**Table 1. Population changes 2005 - 2010**

	<b>ESTIMATED POPULATION on 1 January</b>	<b>LIVE BIRTHS</b>	<b>DEATHS</b>	<b>NATURAL CHANGE</b>	<b>NET MIGRATION</b>	<b>TOTAL CHANGE</b>	<b>POPULATION on 1 January OF THE NEXT YEAR</b>
2005	11.082.751	107.545	105.091	2.454	39.974	42.428	11.125.179
2006	11.125.179	112.042	105.476	6.566	39.995	46.561	11.171.740
2007	11.171.740	111.926	109.895	2.031	40.014	42.045	11.213.785
2008	11.213.785	118.302	107.979	10.323	36.294	46.617	11.260.402
2009	11.260.402	117.933	108.316	9.617	35.099	44.716	11.305.118

**Table 2. Estimated population on 30 June 1995 - 2009**

	<b>MALES</b>	<b>FEMALES</b>	<b>TOTAL</b>
1995	5.264.063	5.370.328	10.634.391
1996	5.303.330	5.405.820	10.709.150
1997	5.337.781	5.438.750	10.776.531
1998	5.366.820	5.468.090	10.834.910
1999	5.389.881	5.492.726	10.882.607
2000	5.406.043	5.511.414	10.917.457
2001	5.421.043	5.528.910	10.949.953
2002	5.439.332	5.548.227	10.987.559
2003	5.456.496	5.567.036	11.023.532
2004	5.475.529	5.586.206	11.061.735
2005	5.497.372	5.606.557	11.103.929
2006	5.520.164	5.628.369	11.148.533
2007	5.543.018	5.649.831	11.192.849
2008	5.565.281	5.671.787	11.237.068
2009	5.587.096	5.695.655	11.282.751

**Graph 2**



#### **MARRIAGES – REGISTERED PARTNERSHIP:**

The crude marriage rate in 2009 came up to 5,3 marriages per 1000 population. It should be noticed that at the beginning of the 1980's and 1960's this indicator was up to **7,3** and **9** marriages per 1000 population respectively.

This downward trend had a negative effect on the number of births.

The median age of women at first marriage has been gradually increasing from 24,1 years in 1991 to **28,9** years in 2009.

In addition to this, it is worth noticing that the number of civil marriages has been dramatically rising.

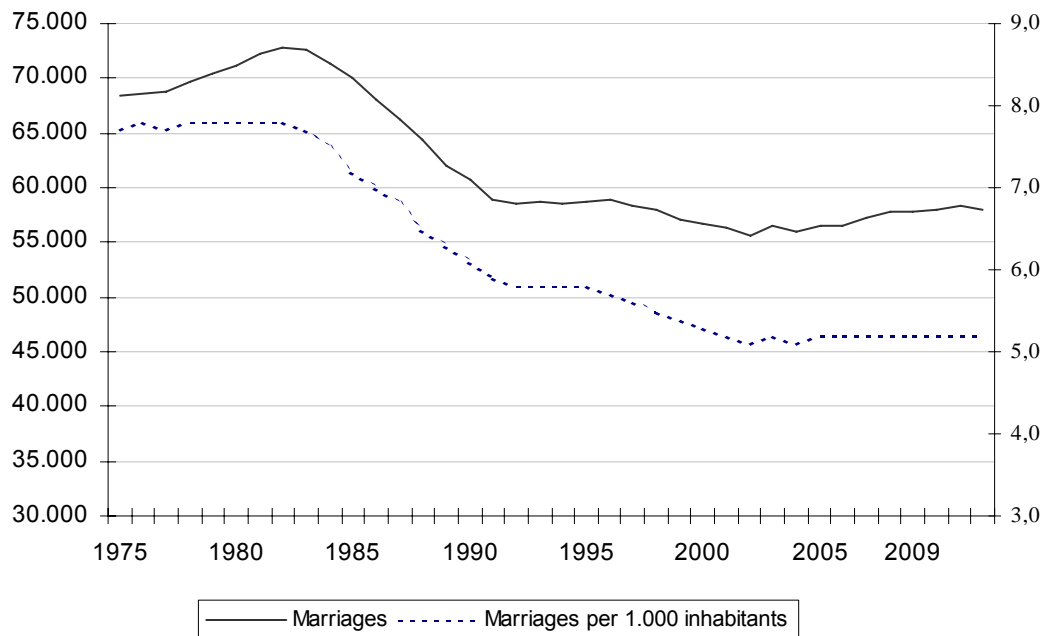
In 2009, when the Law No 3719/2008 – establishing the “Registered Partnership” between heterosexual adults - was first put into force in Greece, **104** Registered Partnerships were recorded: 54 of them were recorded in the Region of Attiki and the rest of them in 16 Departments of the country.

**Table 3. Marriages by type 1995 – 2009**

Year	Marriages				
				%	
	Total	Religious	Civil	Religious	Civil
1995	63.987	57.258	6.729	89,5	10,5
1996	45.408	38.670	6.738	85,2	14,8
1997	60.535	53.652	6.883	88,6	11,4
1998	55.489	49.081	6.408	88,5	11,5
1999	61.165	53.495	7.670	87,5	12,5
2000	48.880	40.269	8.611	82,4	17,6
2001	58.491	48.087	10.404	82,2	17,8
2002	57.872	45.578	12.294	78,8	21,2
2003	61.081	47.871	13.210	78,4	21,6
2004	51.377	37.496	13.881	73,0	27,0
2005	61.043	43.601	17.442	71,4	28,6
2006	57.802	39.579	18.223	68,5	31,5
2007	61.377	40.734	20.643	66,4	33,6
2008	53.500	32.380	21.120	60,5	39,5
2009	59.212	34.375	24.837	58,1	41,9

**Graph 3**

**Marriages and marriages rates 1975 - 2009 (Average for the 4 year period)**



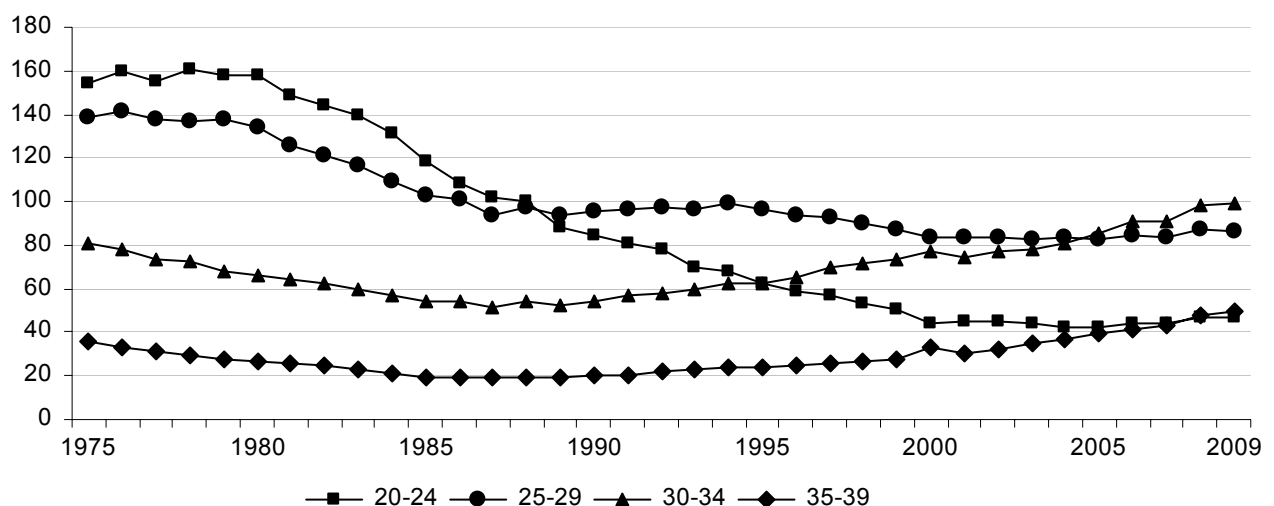
Graph 3 illustrates the downward trend of the number of marriages (average number for the 4-year period). More specifically, at the end of the 1970's the number of marriages per year was about 72.000, falling to 55.000 at the beginning of the 2000's and then down to about 58.000 marriages in 2009.

#### BIRTHS:

In Greece, the number of births in 2009 was 117.933, remaining approximately at the same level of 2008. The total fertility rate, which had been sharply falling from 2,2 in 1980 to 1,3 in 2005, is now experiencing a slight upwards trend reaching 1,4 in 2007 and again to 1,5 in 2009, thus remaining below the replacement level (2,1). The median age of mother at birth was 31,1 years in 2009 in comparison with 25,9 years in 1975. It is also worth noticing that the number of births out of marriage has been steadily increasing (as absolute number and as percentage of the total number of births).

Graph 4 illustrates the age specific fertility rates (ASFR) for the four most productive age groups. It should be pointed out that until 1988 the “20-24” age group had been recording the highest ASFR, while from 2008 onwards it holds the lowest ASFP among the four age groups.

Age specific fertility rates by selected age groups 1975 - 2009



**DEATHS:**

The number of deaths remained at the same level of the latest years and in 2009 came up to 108.316. The crude mortality rate has been rising from 9,3 deaths per 1.000 population in 1991 to 9,6 deaths in 2009. This onwards trend is attributed to the ageing of the population and it should not be interpreted as an increase of the mortality rate.

The median age at death, which in 1995 was 71,8 years for men and 77,6 years for women, is recording an increase and in 2009 came up to 74,0 years for men and 80,0 years for women.

The infant mortality rate has been experiencing a continuous decline: from 18,0 in 1980, it fell to 2,7 in 2008 and to 3,1 in 2009.

In 2009, life expectancy at birth came up to 77,7 years for men and 82,2 years for women, while in 1985 it was down to 73,5 and 78,4 years respectively.

**Table 4. Births-Deaths 1975 – 2009**

	Live Births	Births in marriage	Births out of marriage	Deaths	Infant Deaths	Total Fertility Rate	Live Births per 1.000 Inhabitants	Deaths per 1.000 Inhabitants	Live Births in marriage per 1.000 live Births	Live Births out of marriage per 1.000 live Births	Infant Deaths per 1.000 live Births
1975	142.273	140.389	1.884	80.077	3.409	2,3	15,7	8,9	986,8	13,2	24,0
1980	148.134	145.968	2.166	87.282	2.658	2,2	15,4	9,1	985,4	14,6	17,9
1985	116.481	114.384	2.097	92.886	1.647	1,7	11,7	9,4	982,0	18,0	14,1
1990	102.229	100.015	2.214	94.152	993	1,4	10,1	9,3	978,3	21,7	9,7
1991	102.620	100.173	2.447	95.498	927	1,4	10,0	9,3	976,2	23,8	9,0
1992	104.081	101.336	2.745	98.231	871	1,4	10,0	9,5	973,6	26,4	8,4
1993	101.799	98.912	2.887	97.419	864	1,3	9,7	9,3	971,6	28,4	8,5
1994	103.763	100.781	2.982	97.807	823	1,4	9,8	9,3	971,3	28,7	7,9
1995	101.495	98.412	3.083	100.158	827	1,3	9,5	9,4	969,6	30,4	8,1
1996	100.718	97.428	3.290	100.740	730	1,3	9,4	9,4	967,3	32,7	7,2
1997	102.038	98.506	3.532	99.738	657	1,3	9,5	9,3	965,4	34,6	6,4
1998	100.894	97.052	3.842	102.668	674	1,3	9,3	9,5	961,9	38,1	6,7
1999	100.643	96.753	3.890	103.304	619	1,3	9,2	9,5	961,3	38,7	6,2
2000	103.274	99.119	4.155	105.170	561	1,3	9,5	9,6	959,8	40,2	5,4
2001	102.282	97.930	4.352	102.559	522	1,3	9,3	9,4	957,5	42,5	5,1
2002	103.569	98.969	4.600	103.915	530	1,3	9,4	9,5	955,6	44,4	5,1
2003	104.420	99.401	5.019	105.529	420	1,3	9,5	9,6	951,9	48,1	4,0
2004	105.655	100.273	5.382	104.942	429	1,3	9,6	9,5	949,1	50,9	4,1
2005	107.545	102.060	5.485	105.091	409	1,3	9,7	9,5	949,0	51,0	3,8
2006	112.042	106.128	5.914	105.476	415	1,4	10,1	9,5	947,2	52,8	3,7
2007	111.926	105.419	6.507	109.895	396	1,4	10,0	9,8	941,9	58,1	3,5
2008	118.302	111.282	7.020	107.979	314	1,5	10,5	9,6	940,7	59,3	2,7
2009	117.933	110.184	7.749	108.316	371	1,5	10,5	9,6	934,3	65,7	3,1

## **EXPLANATORY NOTES**

**Vital Statistics** The Vital Statistics Survey has been conducted under its current form since 1956. In conjunction with the ELSTAT's Regional Statistical Offices, personal statistical data on vital events are collected on a monthly basis from the Register Offices all over the country. The survey produces statistical results on an annual basis.

**Legal Framework** The present survey is fully harmonized with the European statistical practice. It is governed by Law 344/76 concerning the "Registration of vital events" which provides for the obligations of the Registrars to collect and then to forward the data, as well as by Law 3832/2010 concerning the "Greek Statistical System".

**Coverage** The survey is a census survey and it is conducted throughout the country

**Definitions** **Crude marriage rate:** The number of marriages occurring, per 1000 population. In Greece marriages are bound to seasonality (less marriages recorded in leap years) that is why the evolution of the number of marriages is estimated on the basis of the average number for a four-year period.

**Total fertility rate:** The mean number of children that would be born alive to a woman during her lifetime if she were to pass through childbearing years conforming to the fertility rates by age of the reference year. The total fertility rate is used to indicate the replacement level, which in the developed countries is 2,1.

**Crude mortality rate:** The number of deaths per 1000 population.

**Life expectancy at birth:** The mean number of years that a newborn can expect to live if subjected throughout his life to the current mortality conditions (age specific probabilities of dying).

**Infant mortality rate:** The ratio of the numbers of deaths of children under one year of age during the reference year to the number of live births in the same year. The value is expressed per 1000 live births.

**Methodology** The vital statistics data, after having been collected from the Register Offices, go under quality control and then they are processed and tabulated.

The Vital Statistics events (Births and Deaths) as well as the estimates of the annual net migration are taken into account for the estimation of the inter-censal population.

**References** More information (tables, graphs, methodology) is available on the ELSTAT website: <http://www.statistics.gr>, under the link Statistical Themes>Vital Statistics >